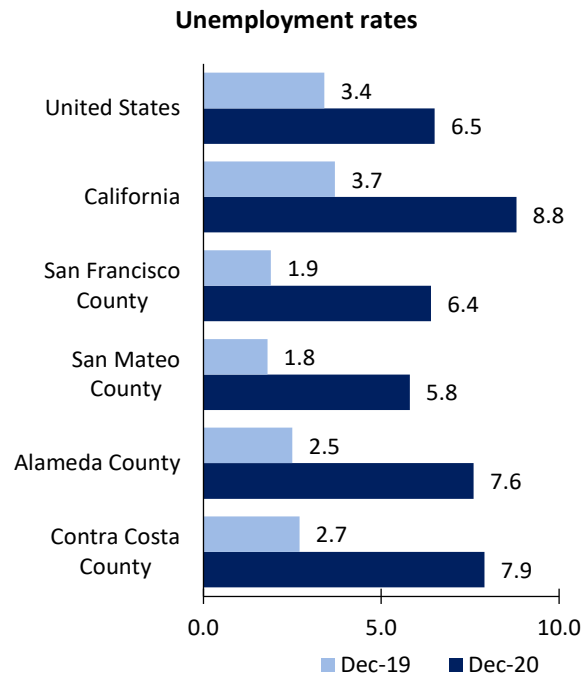


San Francisco Area Economic Summary

Updated March 02, 2021

This summary presents a sampling of economic information for the area; supplemental data are provided for regions and the nation. Subjects include **unemployment, employment, wages, prices, spending, and benefits**. All data are not seasonally adjusted and some may be subject to revision. Area definitions may differ by subject. For more area summaries and geographic definitions, see www.bls.gov/regions/economic-summaries.htm.

Unemployment rates for the nation and selected areas

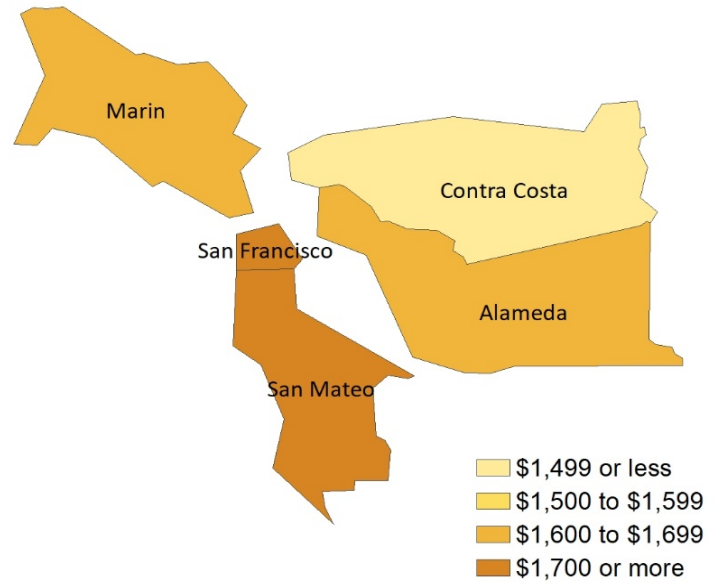


Source: U.S. BLS, Local Area Unemployment Statistics.

Average weekly wages for all industries by county

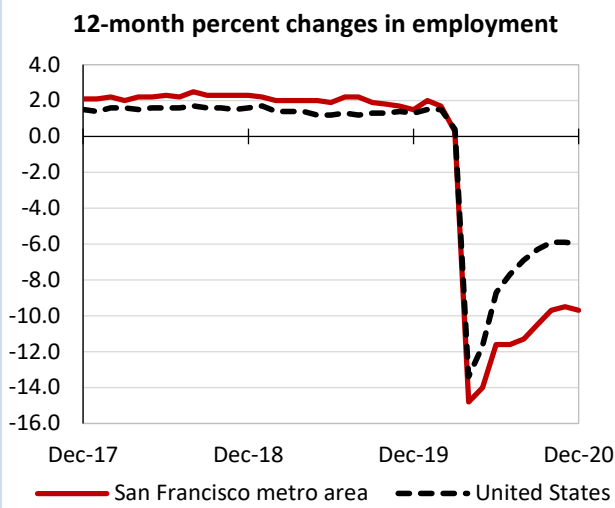
San Francisco metro area, second quarter 2020

(U.S. = \$1,188; Area = \$2,129)



Source: U.S. BLS, Quarterly Census of Employment and Wages.

Over-the-year changes in employment on nonfarm payrolls and employment by major industry sector



Source: U.S. BLS, Current Employment Statistics.

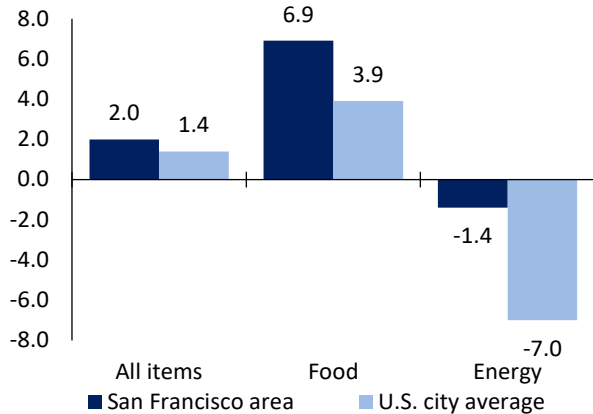
San Francisco metro area employment (number in thousands)	Dec. 2020	Change from Dec. 2019 to Dec. 2020	
		Number	Percent
Total nonfarm	2,270.5	-244.1	-9.7
Mining and logging	0.3	0.0	0.0
Construction	115.8	-9.9	-7.9
Manufacturing	128.4	-15.9	-11.0
Trade, transportation, and utilities	355.4	-30.3	-7.9
Information	120.8	-10.4	-7.9
Financial activities	150.3	2.0	1.3
Professional and business services	497.6	-11.8	-2.3
Education and health services	346.9	-22.4	-6.1
Leisure and hospitality	187.5	-98.3	-34.4
Other services	72.9	-15.3	-17.3
Government	294.6	-31.8	-9.7

Source: U.S. BLS, Current Employment Statistics.



Over-the-year change in the prices paid by urban consumers for selected categories

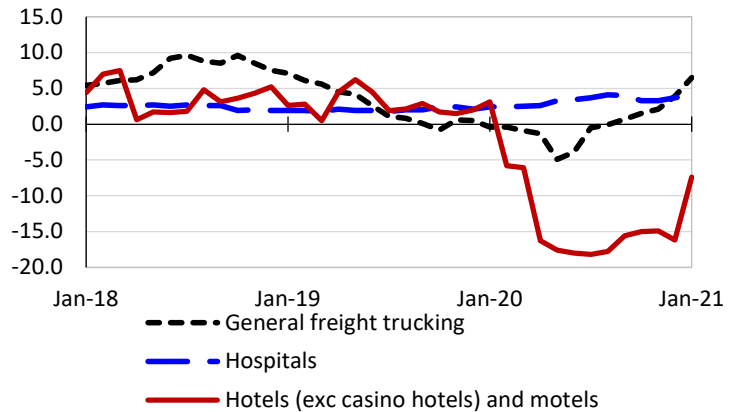
12-month percent change in CPI-U, December 2020



Source: U.S. BLS, Consumer Price Index.

Over-the-year changes in the selling prices received by producers for selected industries nationwide

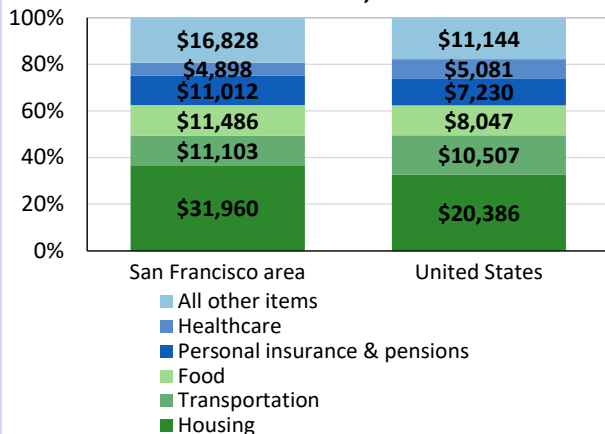
12-month percent changes in PPI



Source: U.S. BLS, Producer Price Index.

Average annual spending and percent distribution for selected categories

Average annual expenditures, United States and San Francisco area, 2018-19



Source: U.S. BLS, Consumer Expenditure Survey.

Average hourly wages for selected occupations

Occupation	San Francisco metro area	United States
All occupations	\$36.49	\$25.72
Human resources managers	78.76	62.29
Registered nurses	66.35	37.24
Electricians	48.27	29.02
Accountants and auditors	45.00	38.23
Graphic designers	37.07	27.17
Chefs and head cooks	30.64	27.07

Source: U.S. BLS, Occupational Employment Statistics, May 2019.

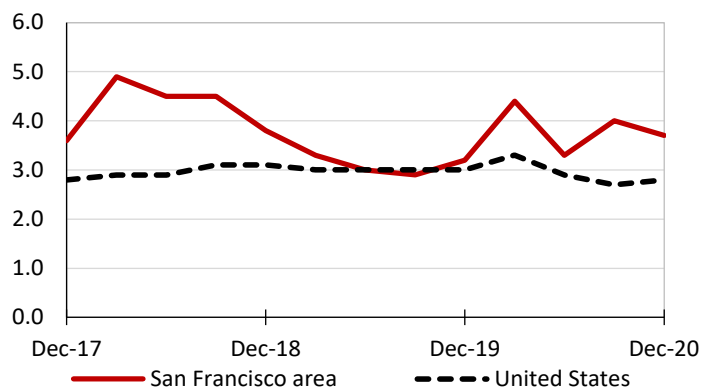
Employer costs per hour worked for wages and selected employee benefits by geographic division

Private industry, September 2020	West census region	United States
Total compensation	\$40.82	\$35.95
Wages and salaries	28.69	25.23
Total benefits	12.13	10.72
Paid leave	3.06	2.63
Vacation	1.57	1.35
Supplemental pay	1.16	1.23
Insurance	3.26	2.86
Retirement and savings	1.49	1.27
Legally required benefits	3.16	2.73

Source: U.S. BLS, Employer Costs for Employee Compensation.

Over-the-year changes in wages and salaries

12-month percent changes in ECI



Source: U.S. BLS, Employment Cost Index.