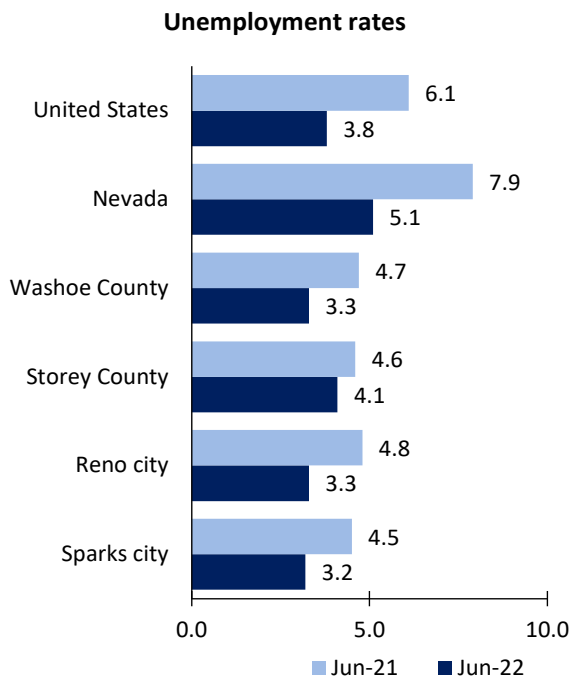


# Reno Area Economic Summary

Updated August 08, 2022

This summary presents a sampling of economic information for the area; supplemental data are provided for regions and the nation. Subjects include **unemployment, employment, wages, prices, spending, and benefits**. All data are not seasonally adjusted and some may be subject to revision. Area definitions may differ by subject. For more area summaries and geographic definitions, see [www.bls.gov/regions/economic-summaries.htm](http://www.bls.gov/regions/economic-summaries.htm).

## Unemployment rates for the nation and selected areas

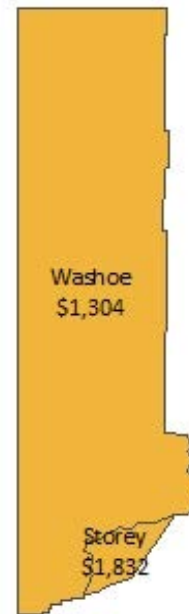


Source: U.S. BLS, Local Area Unemployment Statistics.

## Average weekly wages for all industries by county

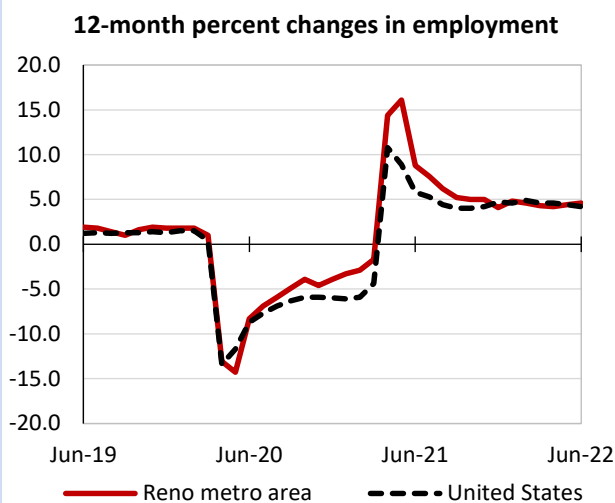
### Reno metro area, fourth quarter 2021

(U.S. = \$1,418; Area = \$1,346)



Source: U.S. BLS, Quarterly Census of Employment and Wages.

## Over-the-year changes in employment on nonfarm payrolls and employment by major industry sector



Source: U.S. BLS, Current Employment Statistics.

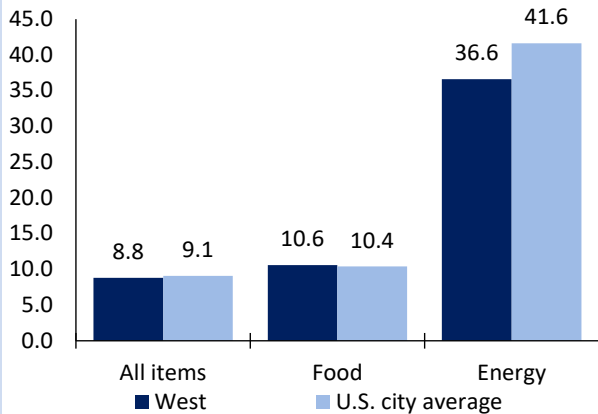
Reno metro area employment (number in thousands)	Jun. 2022	Change from Jun. 2021 to Jun. 2022	
		Number	Percent
Total nonfarm	258.3	11.3	4.6
Mining and logging	0.3	0.0	0.0
Construction	21.6	1.4	6.9
Manufacturing	30.4	2.8	10.1
Trade, transportation, and utilities	57.7	2.4	4.3
Information	3.0	0.0	0.0
Financial activities	11.2	-0.1	-0.9
Professional and business services	33.6	1.3	4.0
Education and health services	28.2	0.4	1.4
Leisure and hospitality	37.2	3.7	11.0
Other services	6.6	-0.6	-8.3
Government	28.5	0.0	0.0

Source: U.S. BLS, Current Employment Statistics.



Over-the-year change in the prices paid by urban consumers for selected categories

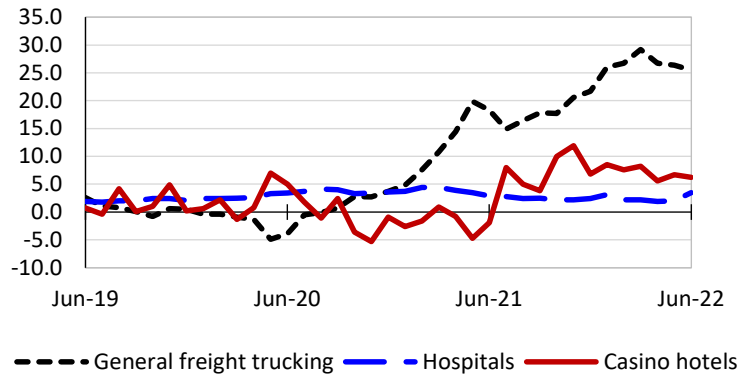
12-month percent change in CPI-U, June 2022



Source: U.S. BLS, Consumer Price Index.

Over-the-year changes in the selling prices received by producers for selected industries nationwide

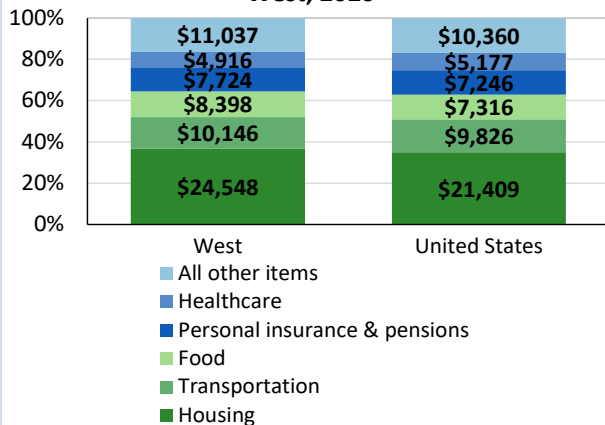
12-month percent changes in PPI



Source: U.S. BLS, Producer Price Index.

Average annual spending and percent distribution for selected categories

Average annual expenditures, United States and West, 2020



Source: U.S. BLS, Consumer Expenditure Survey.

Average hourly wages for selected occupations

Occupation	Reno metro area	United States
All occupations	\$25.36	\$28.01
Lawyers	65.89	71.17
Registered nurses	40.67	39.78
Electricians	30.31	30.44
Chefs and head cooks	27.47	27.37
Construction laborers	21.87	21.22
Hotel, motel, and resort desk clerks	12.87	13.48

Source: U.S. BLS, Occupational Employment and Wage Statistics, May 2021.

Employer costs per hour worked for wages and selected employee benefits by geographic division

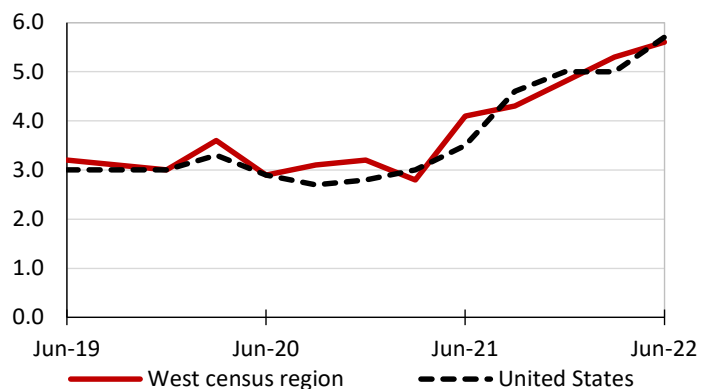
Private industry, March 2022	West census region	United States
Total compensation	\$42.35	\$38.61
Wages and salaries	29.86	27.19
Total benefits	12.49	11.42
Paid leave	3.22	2.88
Vacation	1.63	1.47
Supplemental pay	1.37	1.37
Insurance	3.15	2.93
Retirement and savings	1.45	1.33
Legally required benefits	3.31	2.91

(1) The states that compose the West census division are: AK, AZ, CA, CO, HI, ID, MT, NV, NM, OR, UT, WA, WY, and Guam.

Source: U.S. BLS, Employer Costs for Employee Compensation.

Over-the-year changes in wages and salaries

12-month percent changes in ECI



Source: U.S. BLS, Employment Cost Index.

