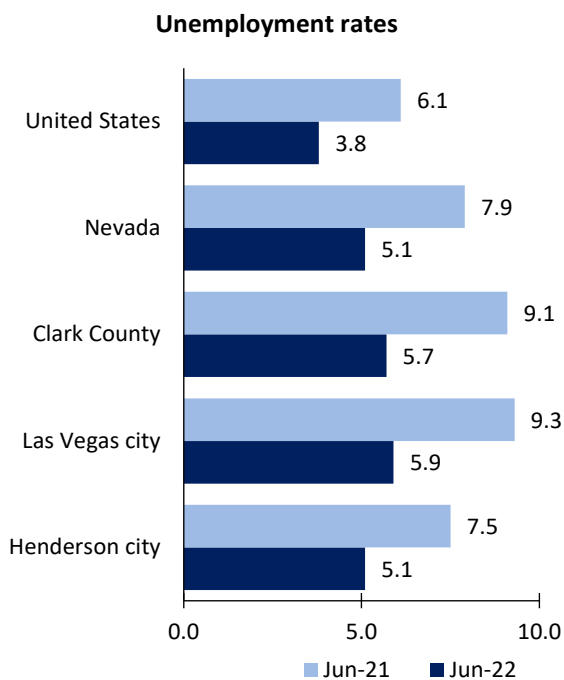


Las Vegas Area Economic Summary

Updated August 08, 2022

This summary presents a sampling of economic information for the area; supplemental data are provided for regions and the nation. Subjects include **unemployment, employment, wages, prices, spending, and benefits**. All data are not seasonally adjusted and some may be subject to revision. Area definitions may differ by subject. For more area summaries and geographic definitions, see www.bls.gov/regions/economic-summaries.htm.

Unemployment rates for the nation and selected areas



Source: U.S. BLS, Local Area Unemployment Statistics.

Average weekly wages for all industries by county

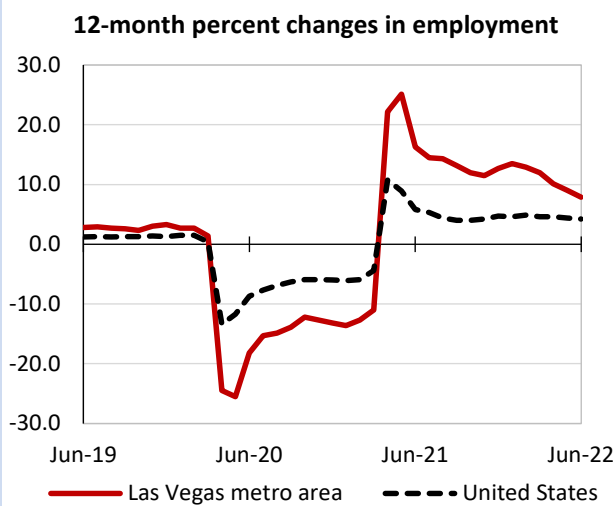
Las Vegas metro area, fourth quarter 2021

(U.S. = \$1,418; Area = \$1,197)



Source: U.S. BLS, Quarterly Census of Employment and Wages.

Over-the-year changes in employment on nonfarm payrolls and employment by major industry sector



Source: U.S. BLS, Current Employment Statistics.

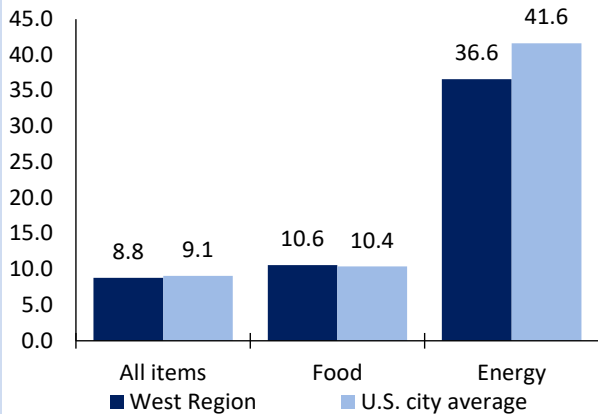
Las Vegas metro area employment (number in thousands)	Jun. 2022	Change from Jun. 2021 to Jun. 2022	
		Number	Percent
Total nonfarm	1,054.4	77.1	7.9
Mining and logging	0.4	0.0	0.0
Construction	74.6	3.3	4.6
Manufacturing	28.8	3.5	13.8
Trade, transportation, and utilities	207.4	14.8	7.7
Information	11.5	0.7	6.5
Financial activities	57.6	4.0	7.5
Professional and business services	157.7	18.6	13.4
Education and health services	113.6	6.3	5.9
Leisure and hospitality	274.9	28.1	11.4
Other services	29.1	0.5	1.7
Government	98.8	-2.7	-2.7

Source: U.S. BLS, Current Employment Statistics.



Over-the-year change in the prices paid by urban consumers for selected categories

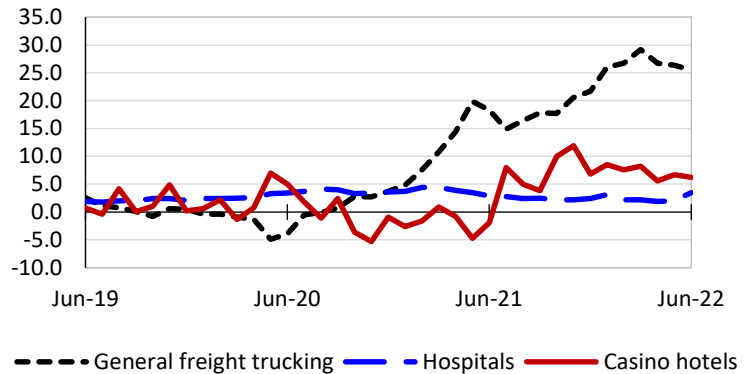
12-month percent change in CPI-U, June 2022



Source: U.S. BLS, Consumer Price Index.

Over-the-year changes in the selling prices received by producers for selected industries nationwide

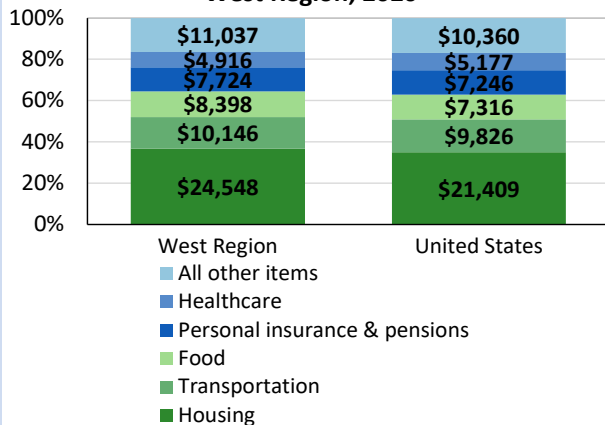
12-month percent changes in PPI



Source: U.S. BLS, Producer Price Index.

Average annual spending and percent distribution for selected categories

Average annual expenditures, United States and West Region, 2020



Source: U.S. BLS, Consumer Expenditure Survey.

Average hourly wages for selected occupations

Occupation	Las Vegas metro area	United States
All occupations	\$24.21	\$28.01
Lawyers	65.53	71.17
Human resources managers	42.78	65.67
Electricians	32.48	30.44
Concierges	14.46	18.04
Cashiers	12.21	12.87
Gambling dealers	9.35	13.92

Source: U.S. BLS, Occupational Employment and Wage Statistics, May 2021.

Employer costs per hour worked for wages and selected employee benefits by geographic division

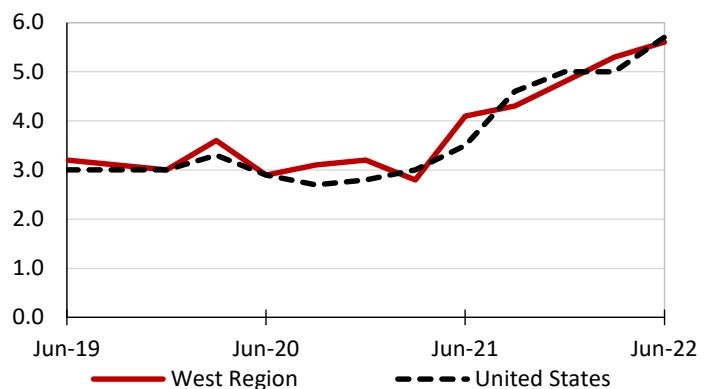
Private industry, March 2022	West Region	United States
Total compensation	\$42.35	\$38.61
Wages and salaries	29.86	27.19
Total benefits	12.49	11.42
Paid leave	3.22	2.88
Vacation	1.63	1.47
Supplemental pay	1.37	1.37
Insurance	3.15	2.93
Retirement and savings	1.45	1.33
Legally required benefits	3.31	2.91

(1) The states that compose the West census division are: AK, AZ, CA, CO, HI, ID, MT, NV, NM, OR, UT, WA, WY, and Guam.

Source: U.S. BLS, Employer Costs for Employee Compensation.

Over-the-year changes in wages and salaries

12-month percent changes in ECI



Source: U.S. BLS, Employment Cost Index.

