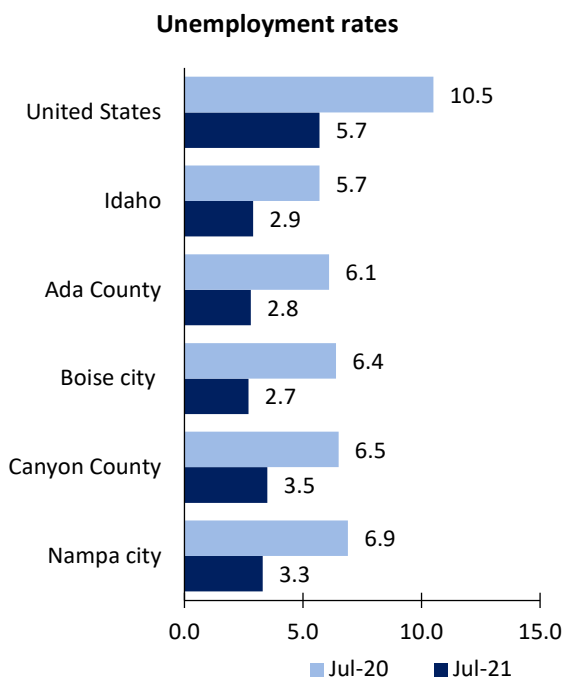


Boise City Area Economic Summary

Updated September 07, 2021

This summary presents a sampling of economic information for the area; supplemental data are provided for regions and the nation. Subjects include **unemployment, employment, wages, prices, spending, and benefits**. All data are not seasonally adjusted and some may be subject to revision. Area definitions may differ by subject. For more area summaries and geographic definitions, see www.bls.gov/regions/economic-summaries.htm.

Unemployment rates for the nation and selected areas

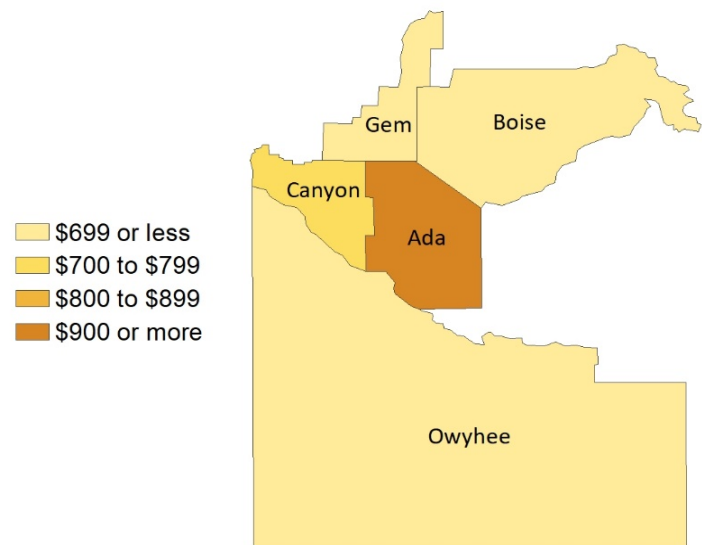


Source: U.S. BLS, Local Area Unemployment Statistics.

Average weekly wages for all industries by county

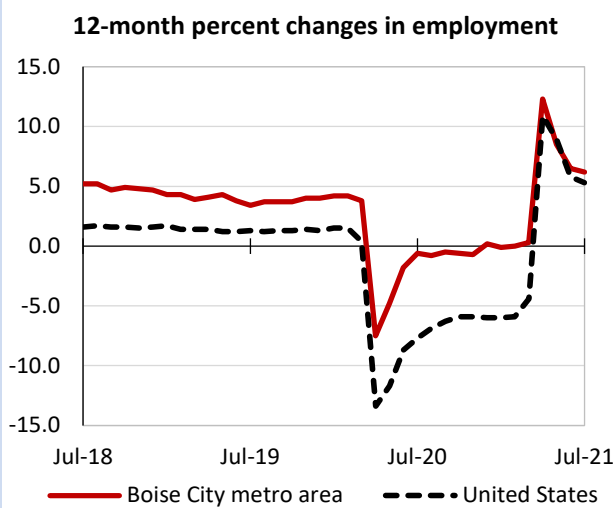
Boise City metro area, first quarter 2021

(U.S. = \$1,289; Area = \$986)



Source: U.S. BLS, Quarterly Census of Employment and Wages.

Over-the-year changes in employment on nonfarm payrolls and employment by major industry sector



Source: U.S. BLS, Current Employment Statistics.

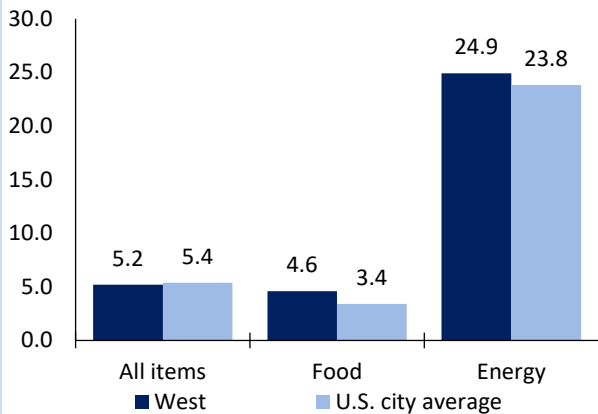
Boise City metro area employment (number in thousands)	Jul. 2021	Change from Jul. 2020 to Jul. 2021	
		Number	Percent
Total nonfarm	364.1	21.1	6.2
Mining, logging, and construction	31.9	2.6	8.9
Manufacturing	28.1	-0.5	-1.7
Trade, transportation, and utilities	72.3	6.2	9.4
Information	3.7	0.3	8.8
Financial activities	23.5	3.2	15.8
Professional and business services	55.1	1.8	3.4
Education and health services	51.9	0.2	0.4
Leisure and hospitality	36.5	3.8	11.6
Other services	13.5	1.2	9.8
Government	47.6	2.3	5.1

Source: U.S. BLS, Current Employment Statistics.



Over-the-year change in the prices paid by urban consumers for selected categories

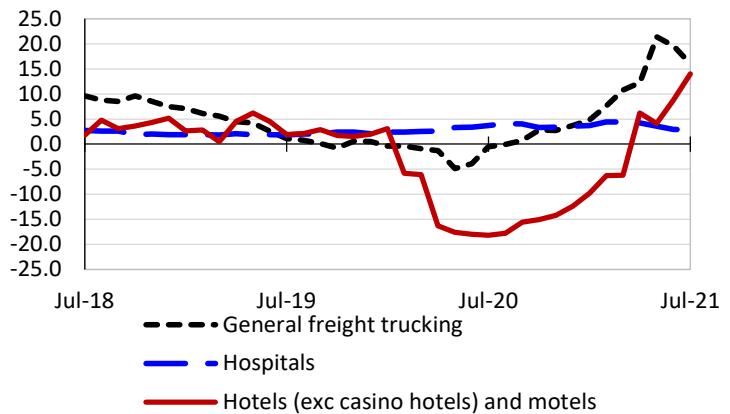
12-month percent change in CPI-U, July 2021



Source: U.S. BLS, Consumer Price Index.

Over-the-year changes in the selling prices received by producers for selected industries nationwide

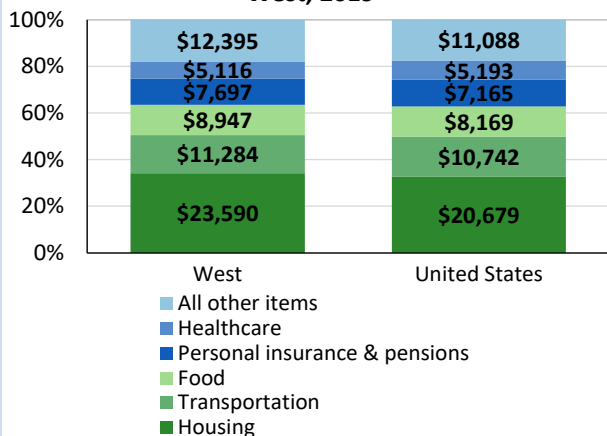
12-month percent changes in PPI



Source: U.S. BLS, Producer Price Index.

Average annual spending and percent distribution for selected categories

Average annual expenditures, United States and West, 2019



Source: U.S. BLS, Consumer Expenditure Survey.

Average hourly wages for selected occupations

Occupation	Boise City metro area	United States
All occupations	\$23.56	\$27.07
Financial managers	52.76	72.84
Human resources managers	52.03	64.70
Accountants and auditors	36.48	39.26
Registered nurses	35.63	38.47
Construction laborers	16.83	20.67
Cooks, restaurant	12.67	14.20

Source: U.S. BLS, Occupational Employment and Wage Statistics, May 2020.

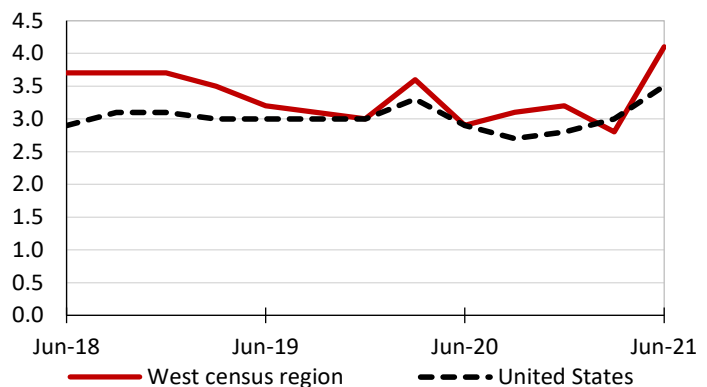
Employer costs per hour worked for wages and selected employee benefits by geographic division

Private industry, March 2021	West census region	United States
Total compensation	\$40.60	\$36.64
Wages and salaries	28.59	25.80
Total benefits	12.01	10.83
Paid leave	3.09	2.72
Vacation	1.56	1.39
Supplemental pay	1.29	1.27
Insurance	3.14	2.83
Retirement and savings	1.34	1.25
Legally required benefits	3.16	2.77

Source: U.S. BLS, Employer Costs for Employee Compensation.

Over-the-year changes in wages and salaries

12-month percent changes in ECI



Source: U.S. BLS, Employment Cost Index.

