

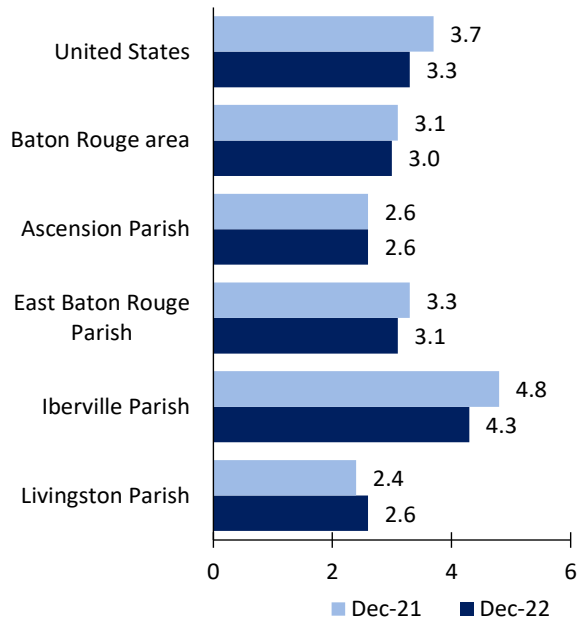
Baton Rouge Area Economic Summary

Updated February 03, 2023

This summary presents a sampling of economic information for the area; supplemental data are provided for regions and the nation. Subjects include **unemployment, employment, wages, prices, spending, and benefits**. All data are not seasonally adjusted and some may be subject to revision. Area definitions may differ by subject. For more area summaries and geographic definitions, see www.bls.gov/regions/economic-summaries.htm.

Unemployment rates for the nation and selected areas

Unemployment rates

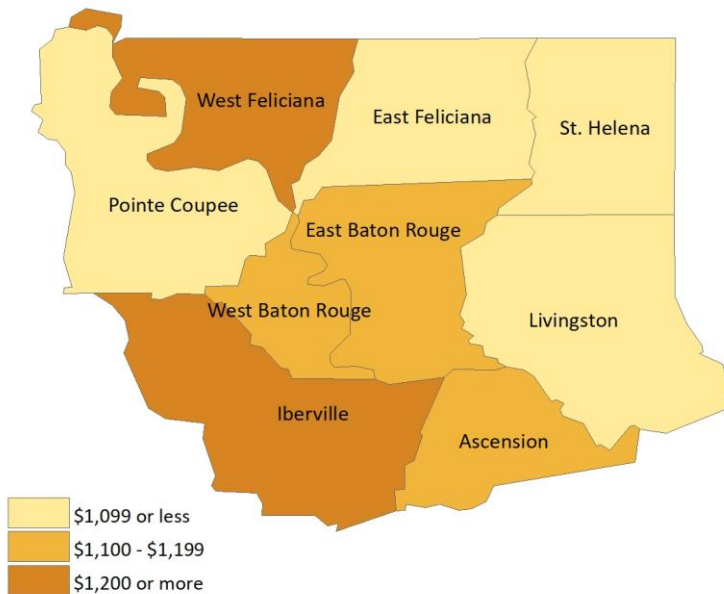


Source: U.S. BLS, Local Area Unemployment Statistics.

Average weekly wages for all industries by county

Baton Rouge area, second quarter 2022

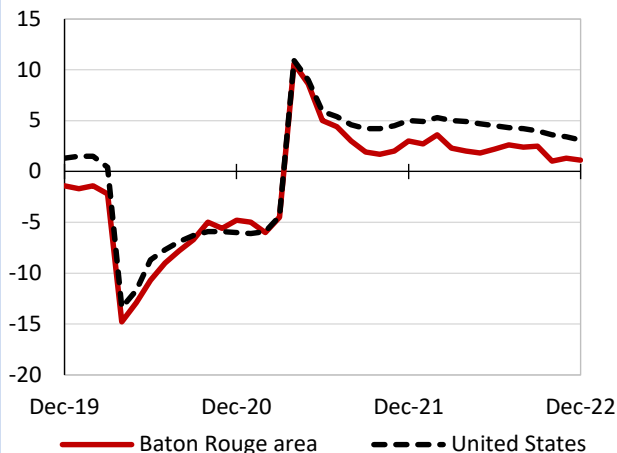
(U.S. = \$1,294; Area = \$1,137)



Source: U.S. BLS, Quarterly Census of Employment and Wages.

Over-the-year changes in employment on nonfarm payrolls and employment by major industry sector

12-month percent changes in employment



Source: U.S. BLS, Current Employment Statistics.

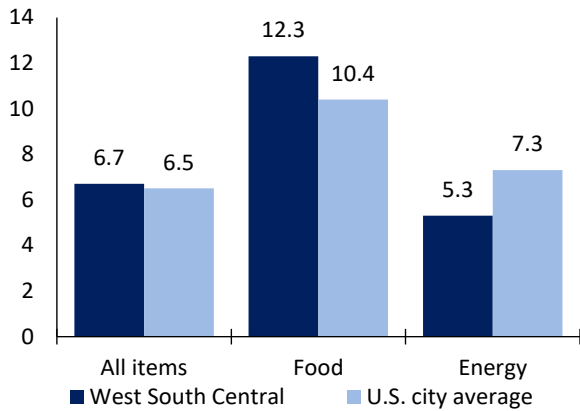
Baton Rouge area employment (number in thousands)	Dec. 2022	Change from Dec. 2021 to Dec. 2022	
		Number	Percent
Total nonfarm	408.7	4.6	1.1
Mining and logging	0.9	0.1	12.5
Construction	42.2	0.0	0.0
Manufacturing	30.5	1.6	5.5
Trade, transportation, and utilities	70.7	-1.1	-1.5
Information	5.6	0.2	3.7
Financial activities	17.9	-0.3	-1.6
Professional and business services	50.9	-1.7	-3.2
Education and health services	59.1	3.3	5.9
Leisure and hospitality	40.9	2.7	7.1
Other services	15.9	0.1	0.6
Government	74.1	-0.3	-0.4

Source: U.S. BLS, Current Employment Statistics.



Over-the-year change in the prices paid by urban consumers for selected categories

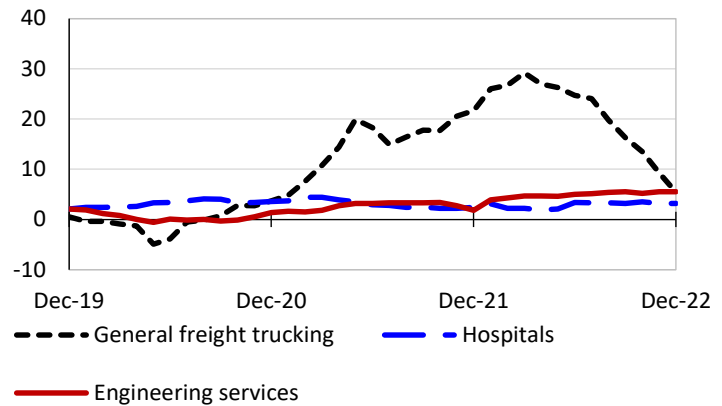
12-month percent change in CPI-U, December 2022



Source: U.S. BLS, Consumer Price Index.

Over-the-year changes in the selling prices received by producers for selected industries nationwide

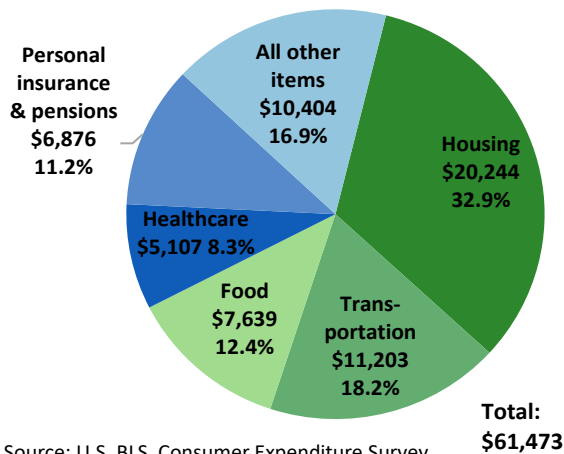
12-month percent changes in PPI



Source: U.S. BLS, Producer Price Index.

Average annual spending and percent distribution for selected categories

South average annual expenditures, 2021



Source: U.S. BLS, Consumer Expenditure Survey.

Average hourly wages for selected occupations

Occupation	Baton Rouge area	United States
All occupations	\$24.87	\$28.01
Human resources managers	47.46	65.67
Accountants and auditors	34.06	40.37
Registered nurses	33.80	39.78
Construction laborers	18.09	21.22
Retail salespersons	13.37	15.35
Cooks, fast food	11.04	12.25

Source: U.S. BLS, Occupational Employment and Wage Statistics, May 2021.

Employer costs per hour worked for wages and selected employee benefits by geographic division

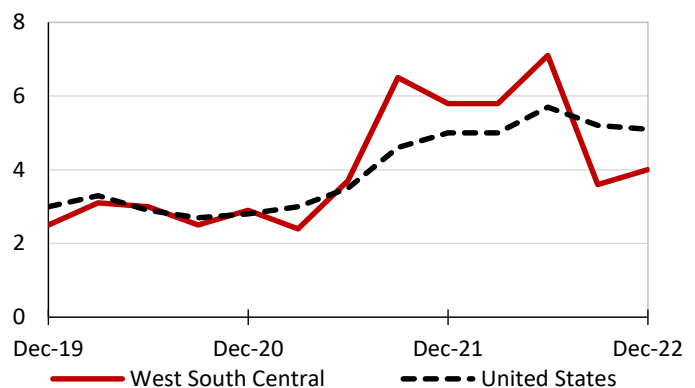
Private industry, September 2022	West South Central (1)	United States
Total compensation	\$35.15	\$39.61
Wages and salaries	25.61	27.93
Total benefits	9.54	11.68
Paid leave	2.45	2.94
Vacation	1.25	1.51
Supplemental pay	1.37	1.41
Insurance	2.22	3.00
Retirement and savings	0.99	1.35
Legally required benefits	2.52	2.98

(1) The states that compose the West South Central census division are: AR, LA, OK, and TX.

Source: U.S. BLS, Employer Costs for Employee Compensation.

Over-the-year changes in wages and salaries

12-month percent changes in ECI



Source: U.S. BLS, Employment Cost Index.

