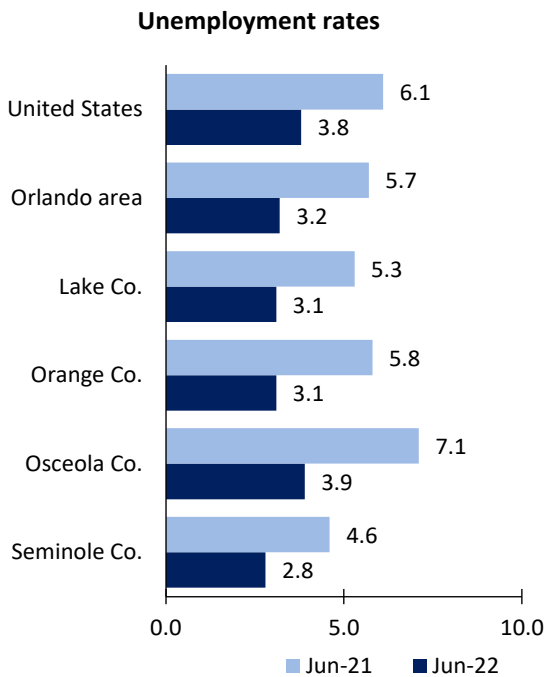


# Orlando, FL, Area Economic Summary

Updated August 03, 2022

This summary presents a sampling of economic information for the area; supplemental data are provided for regions and the nation. Subjects include **unemployment, employment, wages, prices, spending, and benefits**. All data are not seasonally adjusted and some may be subject to revision. Area definitions may differ by subject. For more area summaries and geographic definitions, see [www.bls.gov/regions/economic-summaries.htm](http://www.bls.gov/regions/economic-summaries.htm).

## Unemployment rates for the nation and selected areas

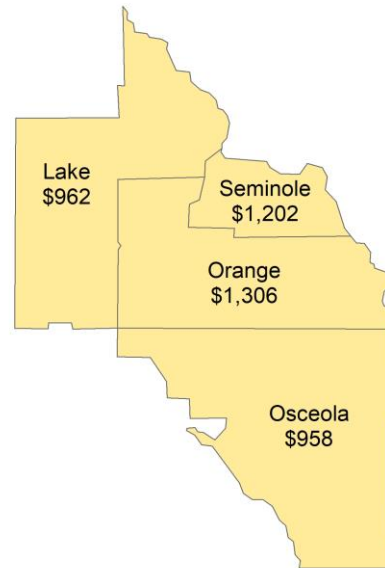


Source: U.S. BLS, Local Area Unemployment Statistics.

## Average weekly wages for all industries by county

Orlando area, fourth quarter 2021

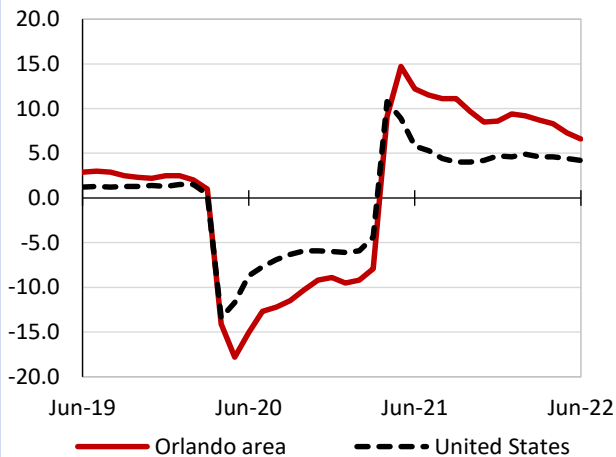
(U.S. = \$1,418; Area = \$1,233)



Source: U.S. BLS, Quarterly Census of Employment and Wages.

## Over-the-year changes in employment on nonfarm payrolls and employment by major industry sector

### 12-month percent changes in employment



Source: U.S. BLS, Current Employment Statistics.

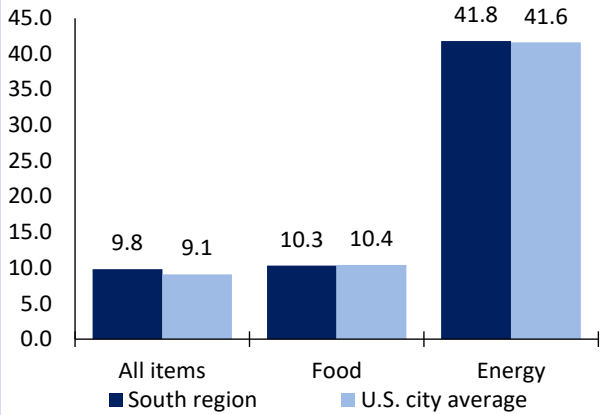
Orlando area employment (number in thousands)	Jun. 2022	Change from Jun. 2021 to Jun. 2022	
		Number	Percent
Total nonfarm	1,337.7	83.1	6.6
Mining and logging	0.2	0.0	0.0
Construction	76.8	-5.6	-6.8
Manufacturing	53.5	3.8	7.6
Trade, transportation, and utilities	261.5	19.4	8.0
Information	26.5	1.8	7.3
Financial activities	85.6	3.4	4.1
Professional and business services	251.0	16.6	7.1
Education and health services	163.1	2.0	1.2
Leisure and hospitality	259.4	37.6	17.0
Other services	44.0	3.1	7.6
Government	116.1	1.0	0.9

Source: U.S. BLS, Current Employment Statistics.



Over-the-year change in the prices paid by urban consumers for selected categories

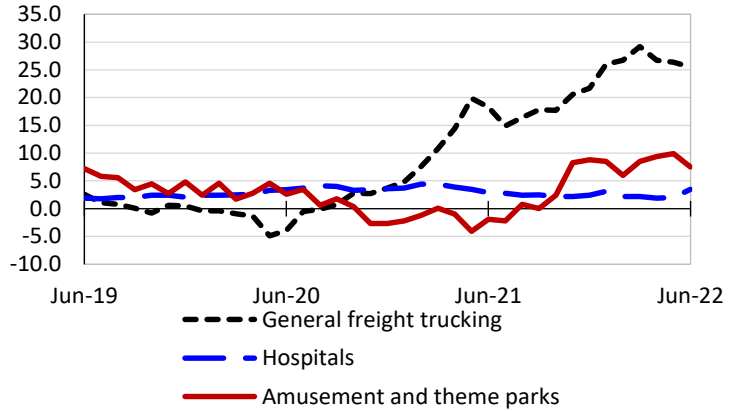
12-month percent change in CPI-U, June 2022



Source: U.S. BLS, Consumer Price Index.

Over-the-year changes in the selling prices received by producers for selected industries nationwide

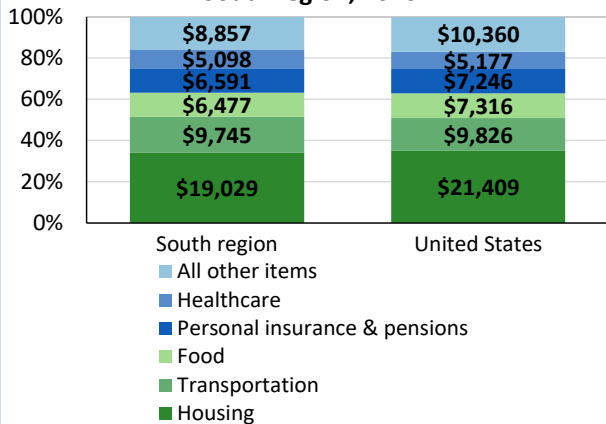
12-month percent changes in PPI



Source: U.S. BLS, Producer Price Index.

Average annual spending and percent distribution for selected categories

Average annual expenditures, United States and South region, 2020



Source: U.S. BLS, Consumer Expenditure Survey.

Average hourly wages for selected occupations

Occupation	Orlando area	United States
All occupations	\$24.41	\$28.01
Accountants and auditors	36.66	40.37
Registered nurses	34.99	39.78
Construction laborers	16.55	21.22
Landscaping and groundskeeping workers	15.20	16.94
Waiters and waitresses	14.21	13.95
Maids and housekeeping cleaners	13.37	14.22

Source: U.S. BLS, Occupational Employment and Wage Statistics, May 2021.

Employer costs per hour worked for wages and selected employee benefits by geographic division

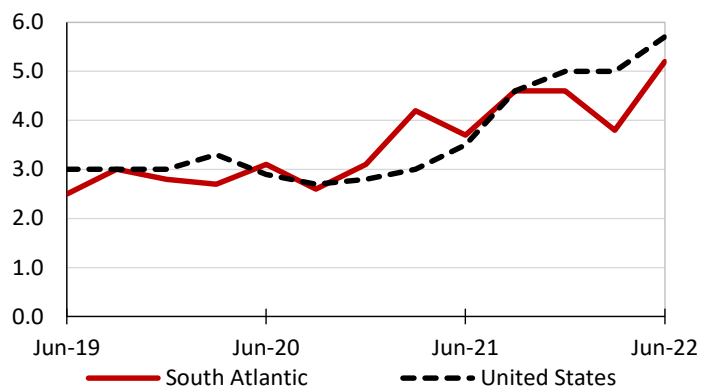
Private industry, March 2022	South Atlantic (1)	United States
Total compensation	\$35.26	\$38.61
Wages and salaries	25.50	27.19
Total benefits	9.76	11.42
Paid leave	2.63	2.88
Vacation	1.34	1.47
Supplemental pay	1.10	1.37
Insurance	2.34	2.93
Retirement and savings	1.05	1.33
Legally required benefits	2.64	2.91

(1) The states that compose the South Atlantic census division are: DE, DC, FL, GA, MD, NC, SC, VA, and WV.

Source: U.S. BLS, Employer Costs for Employee Compensation.

Over-the-year changes in wages and salaries

12-month percent changes in ECI



Source: U.S. BLS, Employment Cost Index.

