

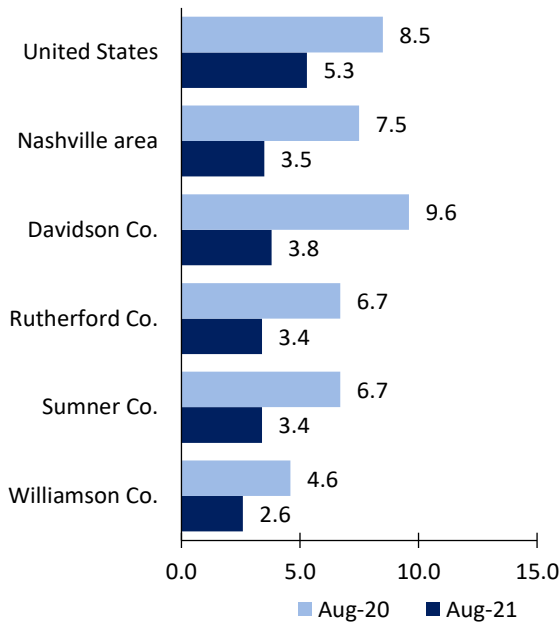
Nashville, TN, Area Economic Summary

Updated October 08, 2021

This summary presents a sampling of economic information for the area; supplemental data are provided for regions and the nation. Subjects include **unemployment, employment, wages, prices, spending, and benefits**. All data are not seasonally adjusted and some may be subject to revision. Area definitions may differ by subject. For more area summaries and geographic definitions, see www.bls.gov/regions/economic-summaries.htm.

Unemployment rates for the nation and selected areas

Unemployment rates

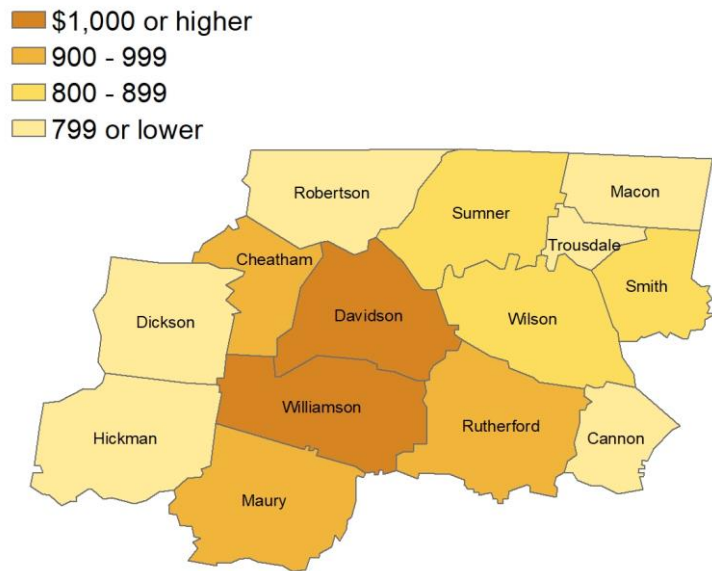


Source: U.S. BLS, Local Area Unemployment Statistics.

Average weekly wages for all industries by county

Nashville area, first quarter 2021

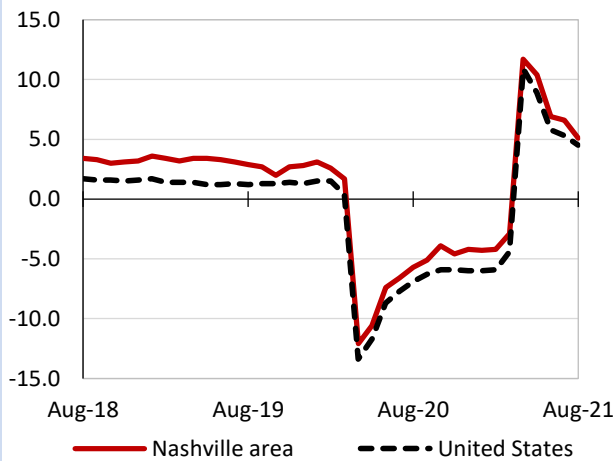
(U.S. = \$1,289; Area = \$1,234)



Source: U.S. BLS, Quarterly Census of Employment and Wages.

Over-the-year changes in employment on nonfarm payrolls and employment by major industry sector

12-month percent changes in employment



Source: U.S. BLS, Current Employment Statistics.

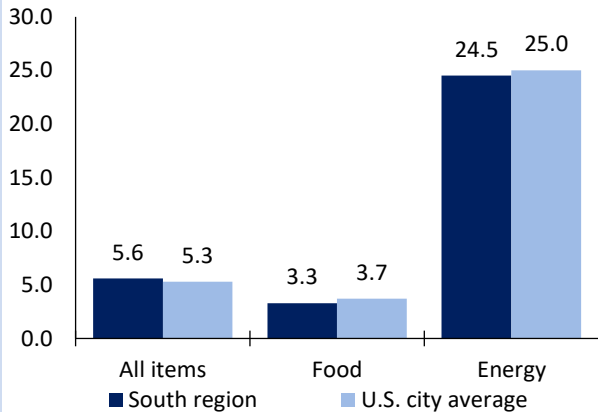
Nashville area employment (number in thousands)	Aug. 2021	Change from Aug. 2020 to Aug. 2021	
		Number	Percent
Total nonfarm	1,041.3	51.0	5.1
Mining, logging, and construction	49.7	0.0	0.0
Manufacturing	81.6	1.8	2.3
Trade, transportation, and utilities	206.9	8.6	4.3
Information	25.5	2.3	9.9
Financial activities	74.9	4.7	6.7
Professional and business services	183.4	15.4	9.2
Education and health services	153.6	3.6	2.4
Leisure and hospitality	107.6	14.9	16.1
Other services	41.2	0.8	2.0
Government	116.9	-1.1	-0.9

Source: U.S. BLS, Current Employment Statistics.



Over-the-year change in the prices paid by urban consumers for selected categories

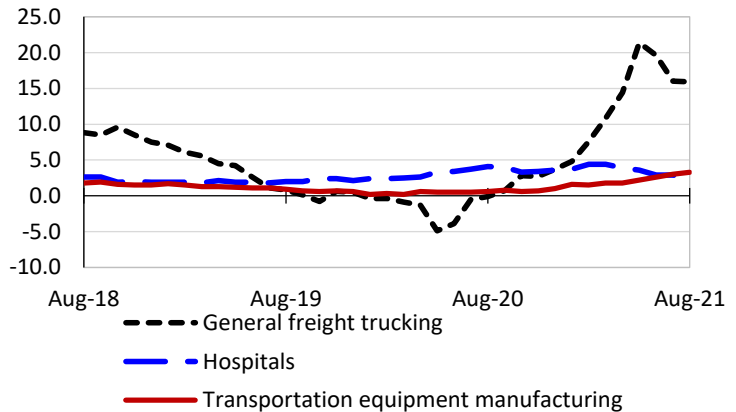
12-month percent change in CPI-U, August 2021



Source: U.S. BLS, Consumer Price Index.

Over-the-year changes in the selling prices received by producers for selected industries nationwide

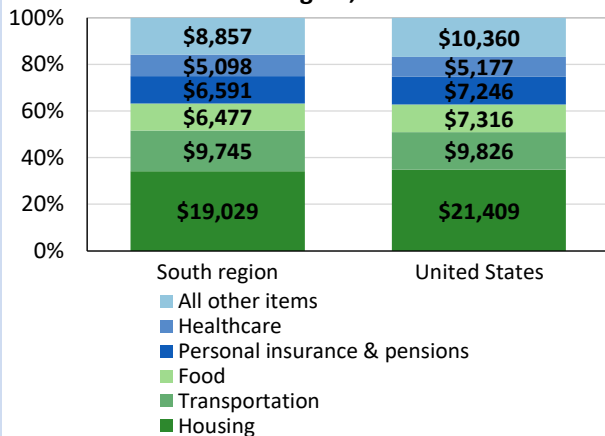
12-month percent changes in PPI



Source: U.S. BLS, Producer Price Index.

Average annual spending and percent distribution for selected categories

Average annual expenditures, United States and South region, 2020



Source: U.S. BLS, Consumer Expenditure Survey.

Average hourly wages for selected occupations

Occupation	Nashville area	United States
All occupations	\$25.08	\$27.07
General and operations managers	59.95	60.45
Musicians and singers	36.24	41.72
Registered nurses	32.75	38.47
Heavy and tractor-trailer truck drivers	25.40	23.42
Bookkeeping, accounting, and auditing clerks	21.53	21.20
Retail salespersons	14.62	14.87

Source: U.S. BLS, Occupational Employment and Wage Statistics, May 2020.

Employer costs per hour worked for wages and selected employee benefits by geographic division

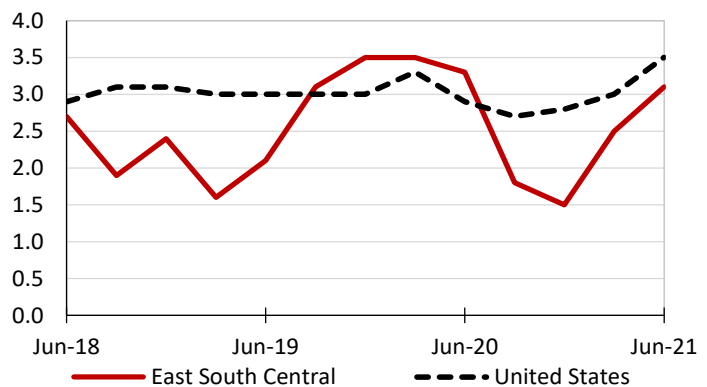
Private industry, June 2021	East South Central (1)	United States
Total compensation	\$29.96	\$36.64
Wages and salaries	21.65	25.89
Total benefits	8.31	10.76
Paid leave	2.08	2.70
Vacation	1.04	1.38
Supplemental pay	0.91	1.25
Insurance	2.20	2.79
Retirement and savings	0.93	1.25
Legally required benefits	2.18	2.77

(1) The states that compose the East South Central census division are: AL, KY, MS, and TN.

Source: U.S. BLS, Employer Costs for Employee Compensation.

Over-the-year changes in wages and salaries

12-month percent changes in ECI



Source: U.S. BLS, Employment Cost Index.

