

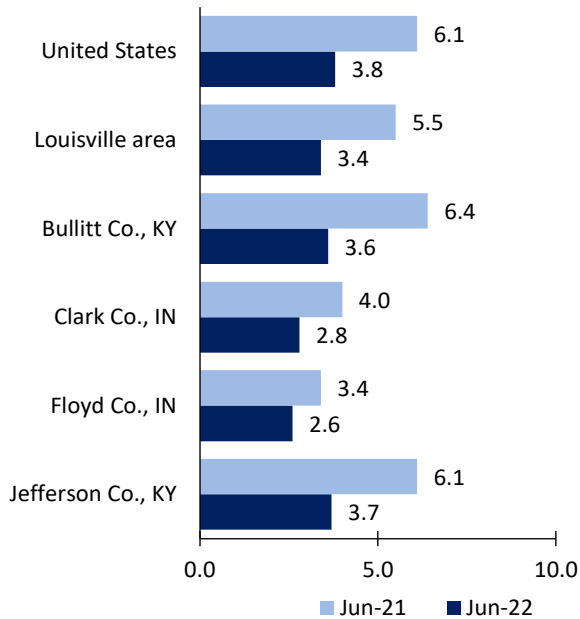
Louisville, KY-IN, Area Economic Summary

Updated August 03, 2022

This summary presents a sampling of economic information for the area; supplemental data are provided for regions and the nation. Subjects include **unemployment, employment, wages, prices, spending, and benefits**. All data are not seasonally adjusted and some may be subject to revision. Area definitions may differ by subject. For more area summaries and geographic definitions, see www.bls.gov/regions/economic-summaries.htm.

Unemployment rates for the nation and selected areas

Unemployment rates

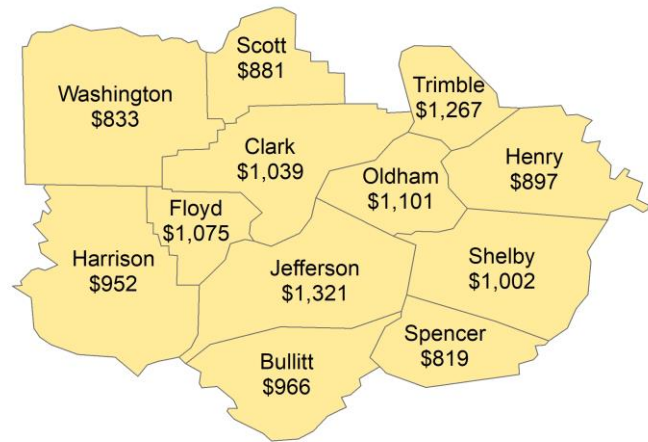


Source: U.S. BLS, Local Area Unemployment Statistics.

Average weekly wages for all industries by county

Louisville area, fourth quarter 2021

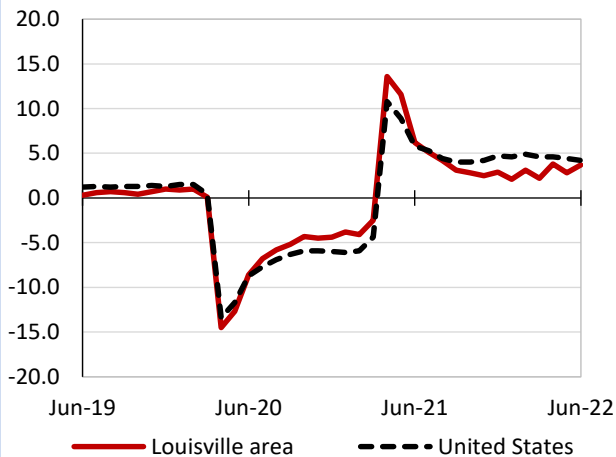
(U.S. = \$1,418; Area = \$1,236)



Source: U.S. BLS, Quarterly Census of Employment and Wages.

Over-the-year changes in employment on nonfarm payrolls and employment by major industry sector

12-month percent changes in employment



Source: U.S. BLS, Current Employment Statistics.

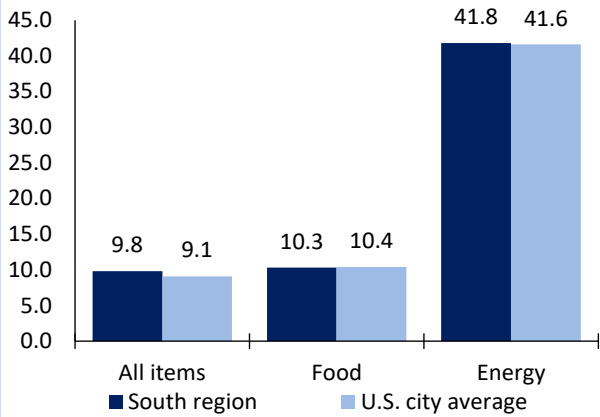
Louisville area employment (number in thousands)	Jun. 2022	Change from Jun. 2021 to Jun. 2022	
		Number	Percent
Total nonfarm	682.1	24.4	3.7
Mining, logging, and construction	30.3	0.5	1.7
Manufacturing	81.2	1.5	1.9
Trade, transportation, and utilities	156.5	4.6	3.0
Information	8.7	0.3	3.6
Financial activities	49.0	0.0	0.0
Professional and business services	94.8	7.9	9.1
Education and health services	98.7	2.4	2.5
Leisure and hospitality	70.0	7.6	12.2
Other services	23.5	-0.4	-1.7
Government	69.4	0.0	0.0

Source: U.S. BLS, Current Employment Statistics.



Over-the-year change in the prices paid by urban consumers for selected categories

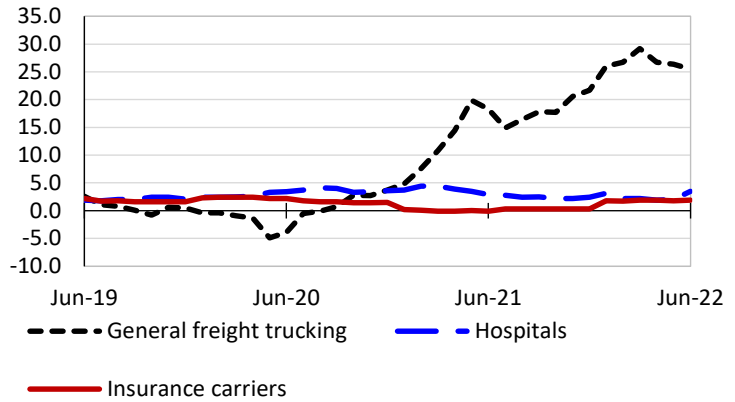
12-month percent change in CPI-U, June 2022



Source: U.S. BLS, Consumer Price Index.

Over-the-year changes in the selling prices received by producers for selected industries nationwide

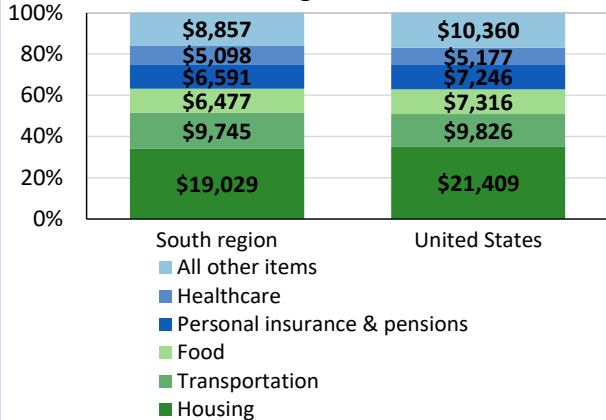
12-month percent changes in PPI



Source: U.S. BLS, Producer Price Index.

Average annual spending and percent distribution for selected categories

Average annual expenditures, United States and South region, 2020



Source: U.S. BLS, Consumer Expenditure Survey.

Average hourly wages for selected occupations

Occupation	Louisville area	United States
All occupations	\$25.15	\$28.01
General and operations managers	46.56	55.41
Accountants and auditors	35.97	40.37
Registered nurses	33.66	39.78
Cargo and freight agents	21.22	23.28
Construction laborers	19.97	21.22
Industrial truck and tractor operators	19.29	19.69

Source: U.S. BLS, Occupational Employment and Wage Statistics, May 2021.

Employer costs per hour worked for wages and selected employee benefits by geographic division

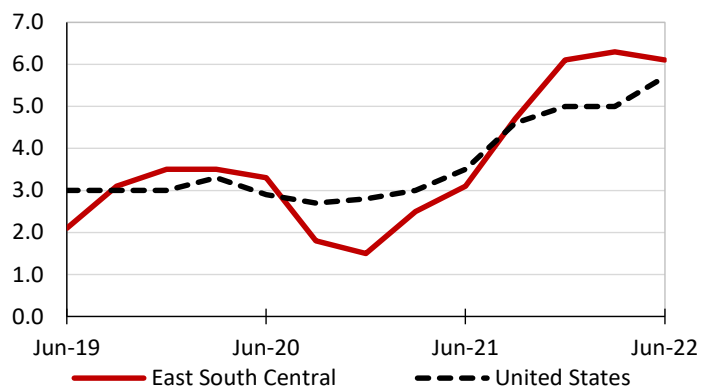
Private industry, March 2022	East South Central (1)	United States
Total compensation	\$31.70	\$38.61
Wages and salaries	22.80	27.19
Total benefits	8.90	11.42
Paid leave	2.22	2.88
Vacation	1.13	1.47
Supplemental pay	1.04	1.37
Insurance	2.35	2.93
Retirement and savings	0.97	1.33
Legally required benefits	2.31	2.91

(1) The states that compose the East South Central census division are: AL, KY, MS, and TN.

Source: U.S. BLS, Employer Costs for Employee Compensation.

Over-the-year changes in wages and salaries

12-month percent changes in ECI



Source: U.S. BLS, Employment Cost Index.

