

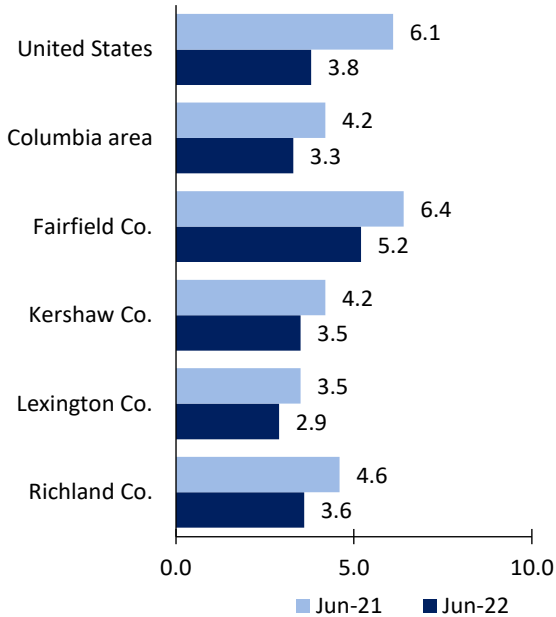
Columbia, SC, Area Economic Summary

Updated August 03, 2022

This summary presents a sampling of economic information for the area; supplemental data are provided for regions and the nation. Subjects include **unemployment, employment, wages, prices, spending, and benefits**. All data are not seasonally adjusted and some may be subject to revision. Area definitions may differ by subject. For more area summaries and geographic definitions, see www.bls.gov/regions/economic-summaries.htm.

Unemployment rates for the nation and selected areas

Unemployment rates

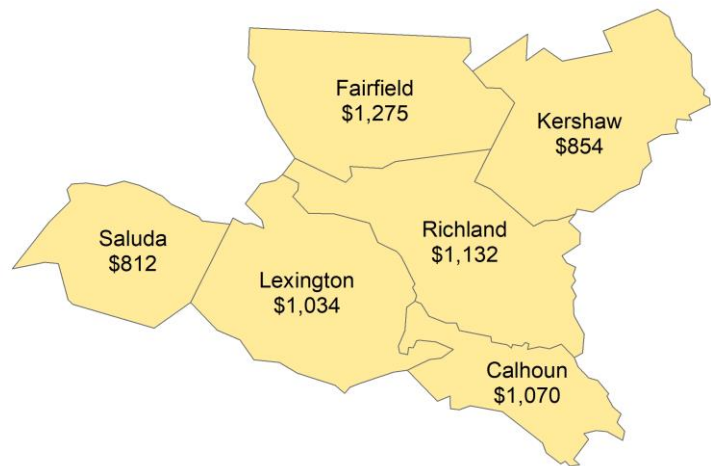


Source: U.S. BLS, Local Area Unemployment Statistics.

Average weekly wages for all industries by county

Columbia area, fourth quarter 2021

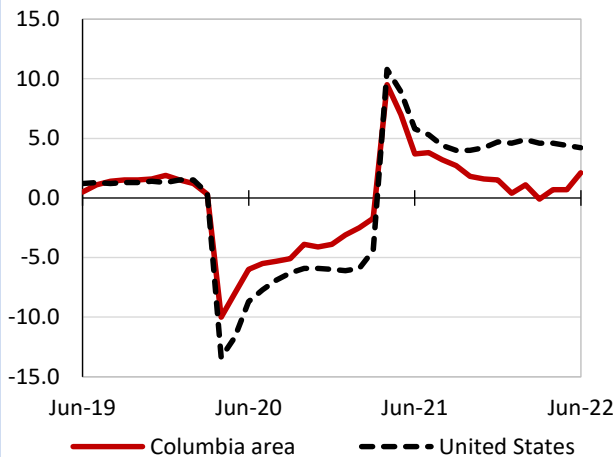
(U.S. = \$1,418; Area = \$1,084)



Source: U.S. BLS, Quarterly Census of Employment and Wages.

Over-the-year changes in employment on nonfarm payrolls and employment by major industry sector

12-month percent changes in employment



Source: U.S. BLS, Current Employment Statistics.

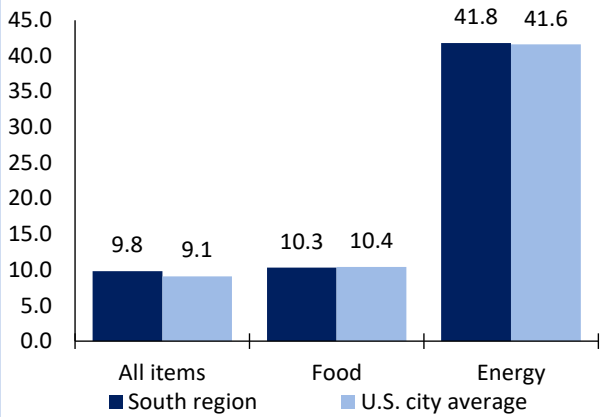
Columbia area employment (number in thousands)	Jun. 2022	Change from Jun. 2021 to Jun. 2022	
		Number	Percent
Total nonfarm	400.2	8.1	2.1
Mining, logging, and construction	16.0	-1.1	-6.4
Manufacturing	32.5	1.4	4.5
Trade, transportation, and utilities	76.0	1.8	2.4
Information	5.3	0.6	12.8
Financial activities	34.7	2.2	6.8
Professional and business services	51.9	-0.1	-0.2
Education and health services	51.7	0.5	1.0
Leisure and hospitality	40.5	4.4	12.2
Other services	16.5	0.5	3.1
Government	75.1	-2.1	-2.7

Source: U.S. BLS, Current Employment Statistics.



Over-the-year change in the prices paid by urban consumers for selected categories

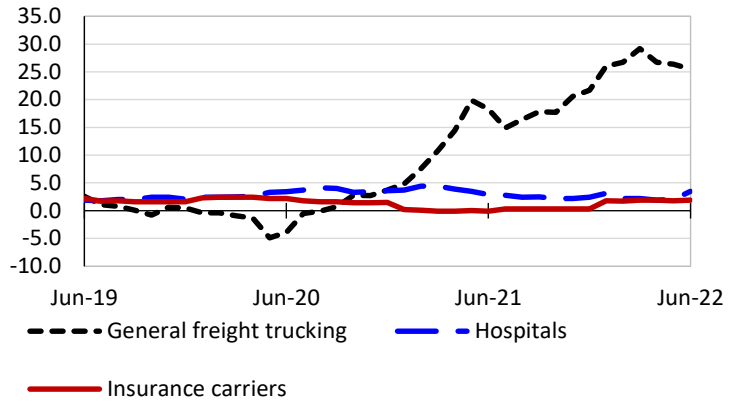
12-month percent change in CPI-U, June 2022



Source: U.S. BLS, Consumer Price Index.

Over-the-year changes in the selling prices received by producers for selected industries nationwide

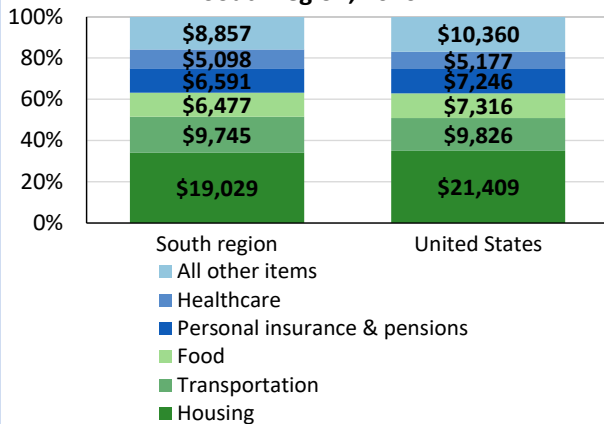
12-month percent changes in PPI



Source: U.S. BLS, Producer Price Index.

Average annual spending and percent distribution for selected categories

Average annual expenditures, United States and South region, 2020



Source: U.S. BLS, Consumer Expenditure Survey.

Average hourly wages for selected occupations

Occupation	Columbia area	United States
All occupations	\$23.11	\$28.01
Financial managers	59.15	73.78
Computer programmers	44.74	46.46
Registered nurses	33.34	39.78
Accountants and auditors	31.93	40.37
Construction laborers	17.16	21.22
Retail salespersons	12.85	15.35

Source: U.S. BLS, Occupational Employment and Wage Statistics, May 2021.

Employer costs per hour worked for wages and selected employee benefits by geographic division

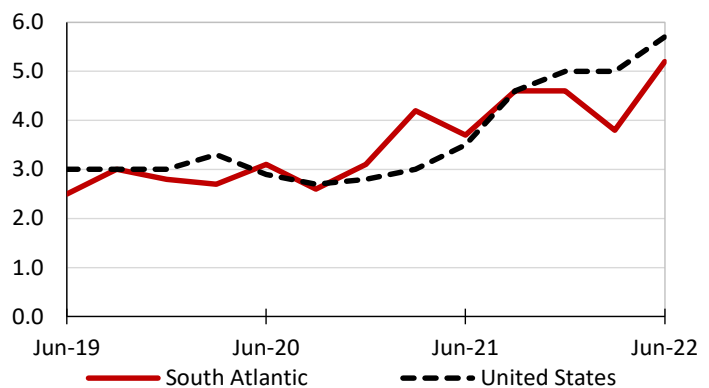
Private industry, March 2022	South Atlantic (1)	United States
Total compensation	\$35.26	\$38.61
Wages and salaries	25.50	27.19
Total benefits	9.76	11.42
Paid leave	2.63	2.88
Vacation	1.34	1.47
Supplemental pay	1.10	1.37
Insurance	2.34	2.93
Retirement and savings	1.05	1.33
Legally required benefits	2.64	2.91

(1) The states that compose the South Atlantic census division are: DE, DC, FL, GA, MD, NC, SC, VA, and WV.

Source: U.S. BLS, Employer Costs for Employee Compensation.

Over-the-year changes in wages and salaries

12-month percent changes in ECI



Source: U.S. BLS, Employment Cost Index.