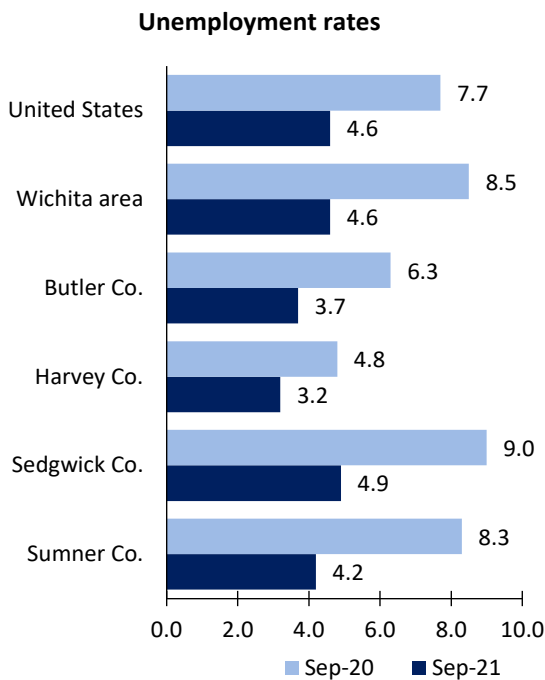


# Wichita Area Economic Summary

Updated November 04, 2021

This summary presents a sampling of economic information for the area; supplemental data are provided for regions and the nation. Subjects include **unemployment, employment, wages, prices, spending, and benefits**. All data are not seasonally adjusted and some may be subject to revision. Area definitions may differ by subject. For more area summaries and geographic definitions, see [www.bls.gov/regions/economic-summaries.htm](http://www.bls.gov/regions/economic-summaries.htm).

## Unemployment rates for the nation and selected areas

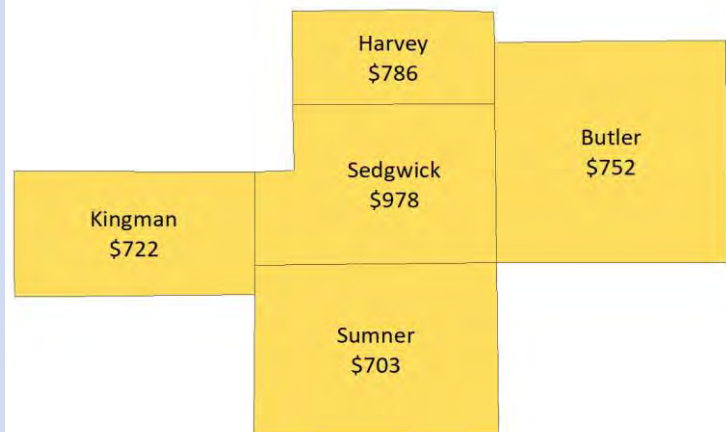


Source: U.S. BLS, Local Area Unemployment Statistics.

## Average weekly wages for all industries by county

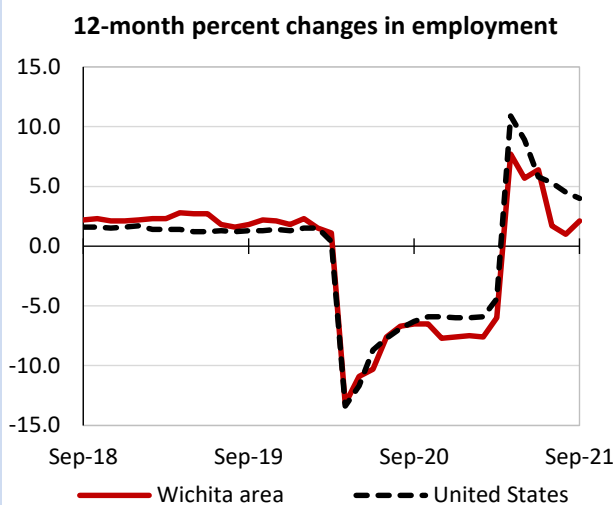
Wichita area, first quarter 2021

(U.S. = \$1,289; Area = \$946)



Source: U.S. BLS, Quarterly Census of Employment and Wages.

## Over-the-year changes in employment on nonfarm payrolls and employment by major industry sector



Source: U.S. BLS, Current Employment Statistics.

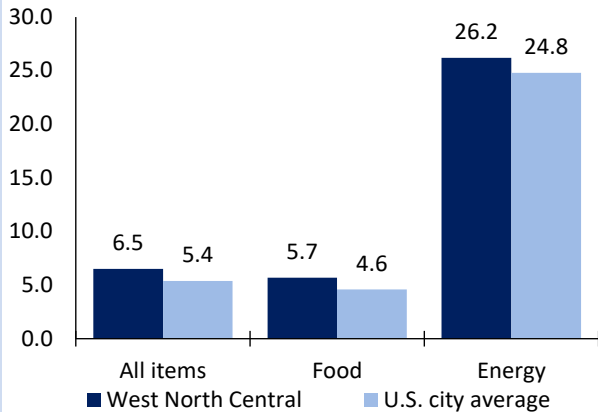
Wichita area employment (number in thousands)	Sep. 2021	Change from Sep. 2020 to Sep. 2021	
		Number	Percent
Total nonfarm	293.0	6.1	2.1
Mining, logging, and construction	16.7	-0.4	-2.3
Manufacturing	46.1	0.4	0.9
Trade, transportation, and utilities	49.0	0.8	1.7
Information	3.6	-0.1	-2.7
Financial activities	11.7	0.1	0.9
Professional and business services	33.8	-0.1	-0.3
Education and health services	47.0	0.2	0.4
Leisure and hospitality	31.7	2.8	9.7
Other services	10.3	0.0	0.0
Government	43.1	2.4	5.9

Source: U.S. BLS, Current Employment Statistics.



Over-the-year change in the prices paid by urban consumers for selected categories

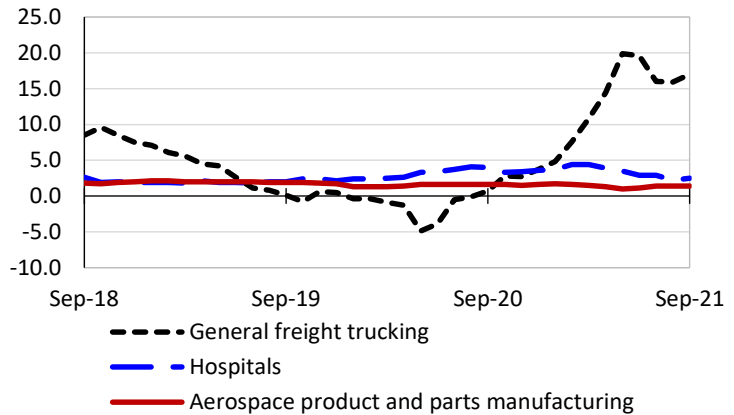
12-month percent change in CPI-U, September 2021



Source: U.S. BLS, Consumer Price Index.

Over-the-year changes in the selling prices received by producers for selected industries nationwide

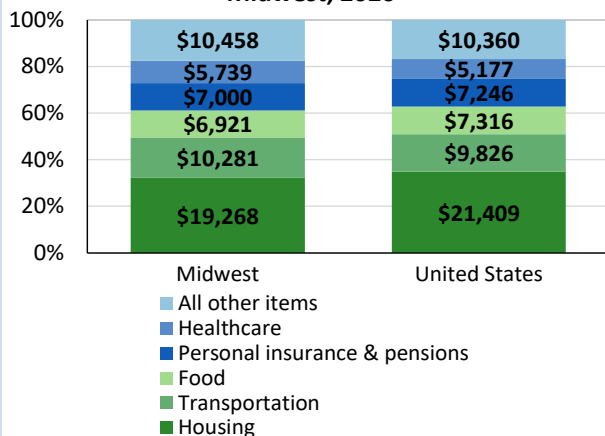
12-month percent changes in PPI



Source: U.S. BLS, Producer Price Index.

Average annual spending and percent distribution for selected categories

Average annual expenditures, United States and Midwest, 2020



Source: U.S. BLS, Consumer Expenditure Survey.

Average hourly wages for selected occupations

Occupation	Wichita, KS	United States
All occupations	\$22.88	\$27.07
Industrial engineers	41.14	45.01
Aircraft mechanics and service technicians	27.35	33.19
Sheet metal workers	23.11	26.60
Computer user support specialists	22.03	27.40
Machinists	21.48	22.98
Pharmacy aides	13.01	15.50

Source: U.S. BLS, Occupational Employment and Wage Statistics, May 2020.

Employer costs per hour worked for wages and selected employee benefits by geographic division

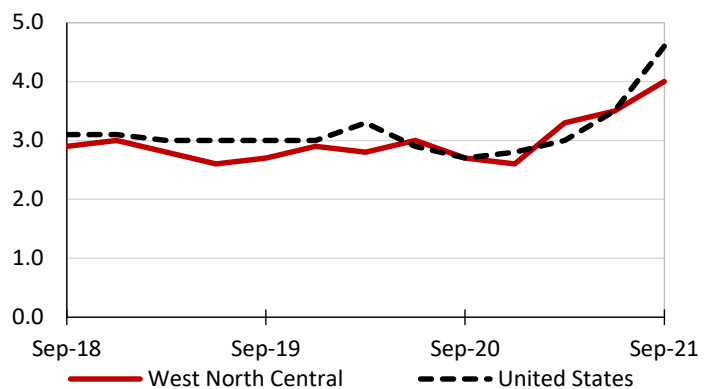
Private industry, June 2021	West North Central	United States
Total compensation	\$32.90	\$36.64
Wages and salaries	22.87	25.89
Total benefits	10.03	10.76
Paid leave	2.35	2.70
Vacation	1.21	1.38
Supplemental pay	1.13	1.25
Insurance	3.02	2.79
Retirement and savings	1.03	1.25
Legally required benefits	2.50	2.77

(1) The states that compose the West North Central census division are: IA, KS, MN, MO, NE, ND, and SD.

Source: U.S. BLS, Employer Costs for Employee Compensation.

Over-the-year changes in wages and salaries

12-month percent changes in ECI



Source: U.S. BLS, Employment Cost Index.

