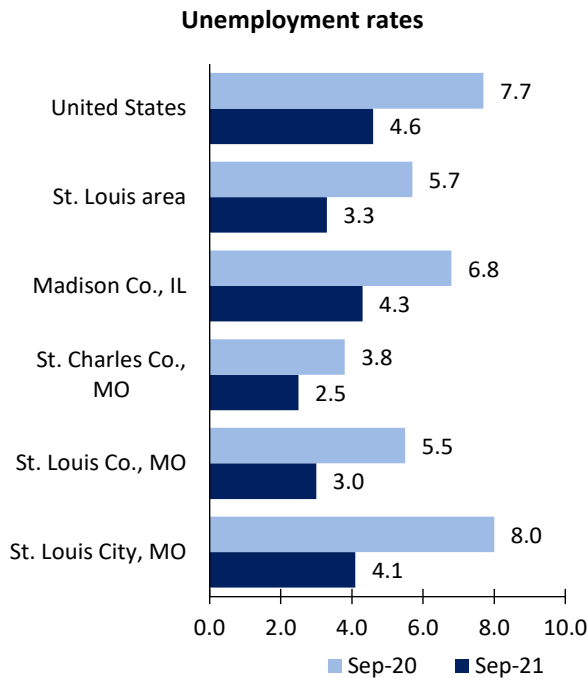


St. Louis Area Economic Summary

Updated November 04, 2021

This summary presents a sampling of economic information for the area; supplemental data are provided for regions and the nation. Subjects include **unemployment, employment, wages, prices, spending, and benefits**. All data are not seasonally adjusted and some may be subject to revision. Area definitions may differ by subject. For more area summaries and geographic definitions, see www.bls.gov/regions/economic-summaries.htm.

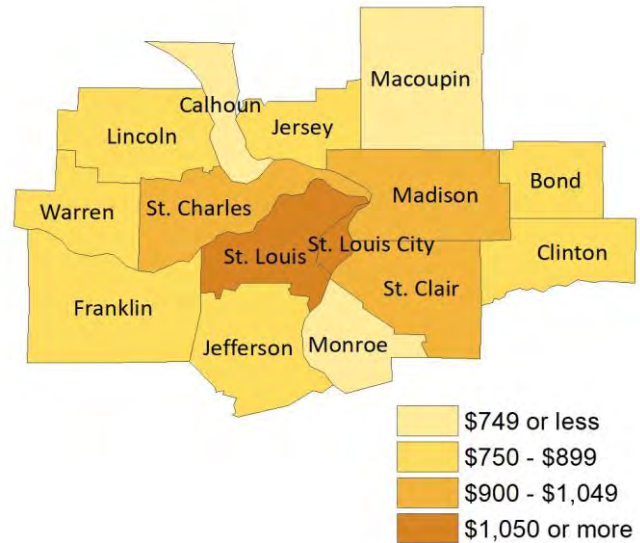
Unemployment rates for the nation and selected areas



Average weekly wages for all industries by county

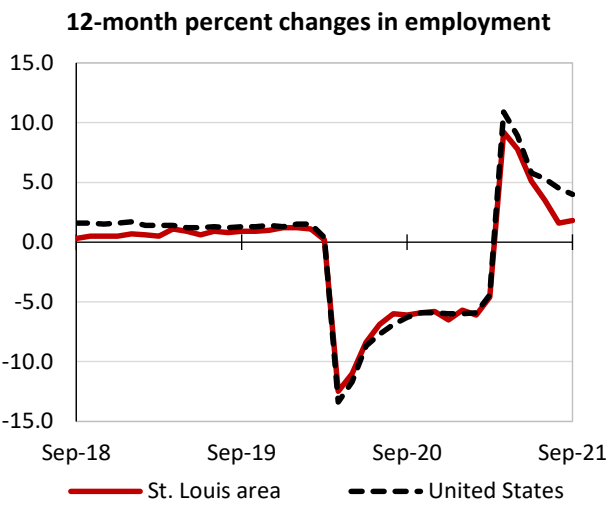
St. Louis area, first quarter 2021

(U.S. = \$1,289; Area = \$1,164)



Source: U.S. BLS, Quarterly Census of Employment and Wages.

Over-the-year changes in employment on nonfarm payrolls and employment by major industry sector



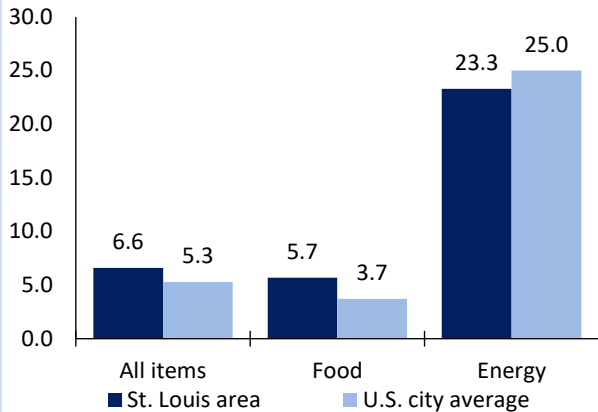
St. Louis area employment (number in thousands)	Sep. 2021	Change from Sep. 2020 to Sep. 2021	
		Number	Percent
Total nonfarm	1,350.8	24.4	1.8
Mining, logging, and construction	71.9	5.2	7.8
Manufacturing	115.6	1.8	1.6
Trade, transportation, and utilities	257.8	2.1	0.8
Information	25.0	-0.1	-0.4
Financial activities	88.5	-2.4	-2.6
Professional and business services	208.6	6.7	3.3
Education and health services	255.4	3.9	1.6
Leisure and hospitality	132.3	11.6	9.6
Other services	48.7	1.6	3.4
Government	147.0	-6.0	-3.9

Source: U.S. BLS, Current Employment Statistics.



Over-the-year change in the prices paid by urban consumers for selected categories

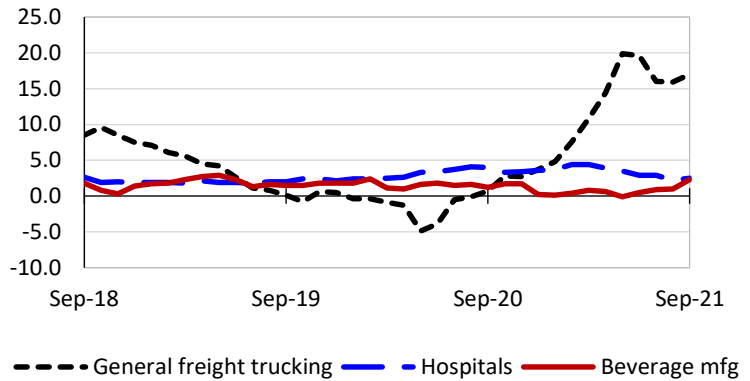
12-month percent change in CPI-U, August 2021



Source: U.S. BLS, Consumer Price Index.

Over-the-year changes in the selling prices received by producers for selected industries nationwide

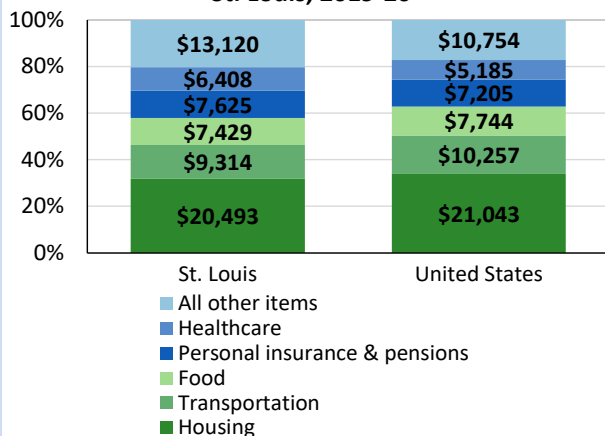
12-month percent changes in PPI



Source: U.S. BLS, Producer Price Index.

Average annual spending and percent distribution for selected categories

Average annual expenditures, United States and St. Louis, 2019-20



Source: U.S. BLS, Consumer Expenditure Survey.

Average hourly wages for selected occupations

Occupation	St. Louis area	United States
All occupations	\$26.06	\$27.07
Financial examiners	39.95	44.58
Respiratory therapists	28.12	31.56
Child, family, and school social workers	23.54	25.18
Computer numerically controlled tool operators	20.98	21.30
Museum technicians and conservators	20.61	24.04
Cooks, institution and cafeteria	13.13	14.40

Source: U.S. BLS, Occupational Employment and Wage Statistics, May 2020.

Employer costs per hour worked for wages and selected employee benefits by geographic division

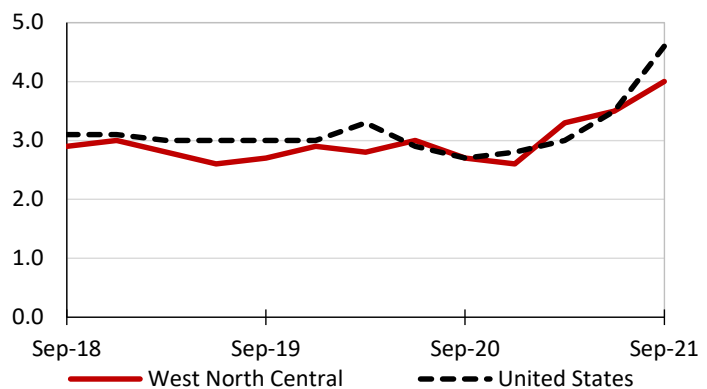
Private industry, June 2021	West North Central	United States
Total compensation	\$32.90	\$36.64
Wages and salaries	22.87	25.89
Total benefits	10.03	10.76
Paid leave	2.35	2.70
Vacation	1.21	1.38
Supplemental pay	1.13	1.25
Insurance	3.02	2.79
Retirement and savings	1.03	1.25
Legally required benefits	2.50	2.77

(1) The states that compose the West North Central census division are: IA, KS, MN, MO, NE, ND, and SD.

Source: U.S. BLS, Employer Costs for Employee Compensation.

Over-the-year changes in wages and salaries

12-month percent changes in ECI



Source: U.S. BLS, Employment Cost Index.

