

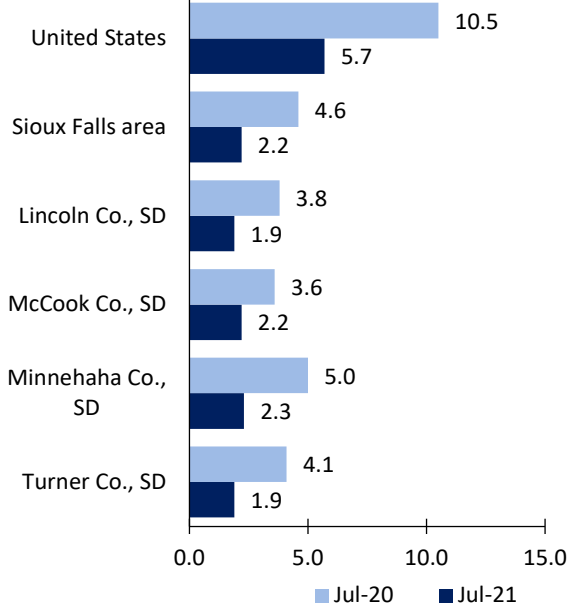
Sioux Falls Area Economic Summary

Updated September 02, 2021

This summary presents a sampling of economic information for the area; supplemental data are provided for regions and the nation. Subjects include **unemployment, employment, wages, prices, spending, and benefits**. All data are not seasonally adjusted and some may be subject to revision. Area definitions may differ by subject. For more area summaries and geographic definitions, see www.bls.gov/regions/economic-summaries.htm.

Unemployment rates for the nation and selected areas

Unemployment rates

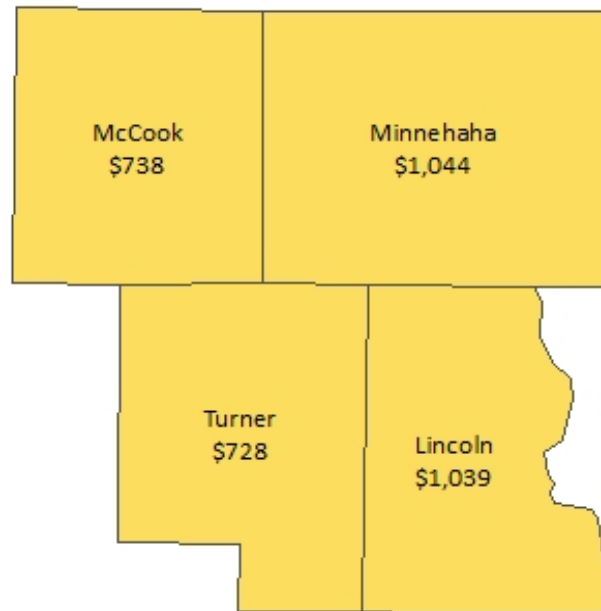


Source: U.S. BLS, Local Area Unemployment Statistics.

Average weekly wages for all industries by county

Sioux Falls area, first quarter 2021

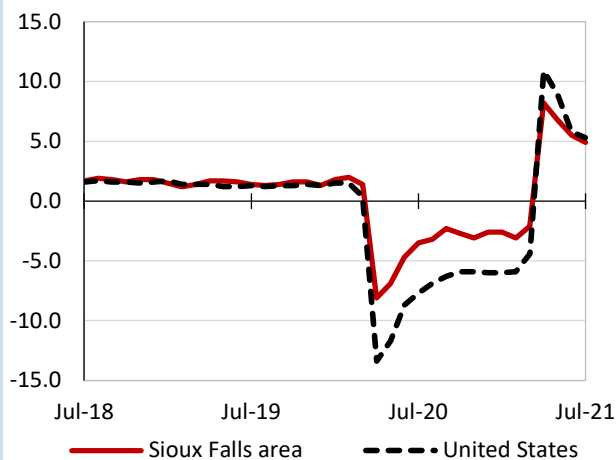
(U.S. = \$1,289; Area = \$1,036)



Source: U.S. BLS, Quarterly Census of Employment and Wages.

Over-the-year changes in employment on nonfarm payrolls and employment by major industry sector

12-month percent changes in employment



Source: U.S. BLS, Current Employment Statistics.

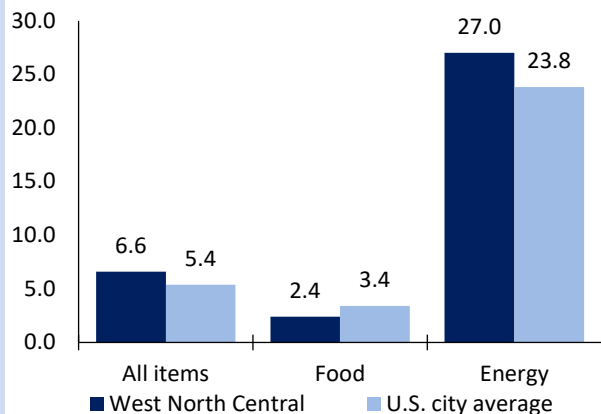
Sioux Falls area employment (number in thousands)	Jul. 2021	Change from Jul. 2020 to Jul. 2021	
		Number	Percent
Total nonfarm	163.4	7.7	4.9
Mining, logging, and construction	11.3	0.9	8.7
Manufacturing	14.4	0.4	2.9
Trade, transportation, and utilities	33.1	1.2	3.8
Information	2.4	0.0	0.0
Financial activities	14.9	-0.6	-3.9
Professional and business services	16.5	1.3	8.6
Education and health services	34.7	1.9	5.8
Leisure and hospitality	15.1	0.9	6.3
Other services	6.3	0.5	8.6
Government	14.7	1.2	8.9

Source: U.S. BLS, Current Employment Statistics.



Over-the-year change in the prices paid by urban consumers for selected categories

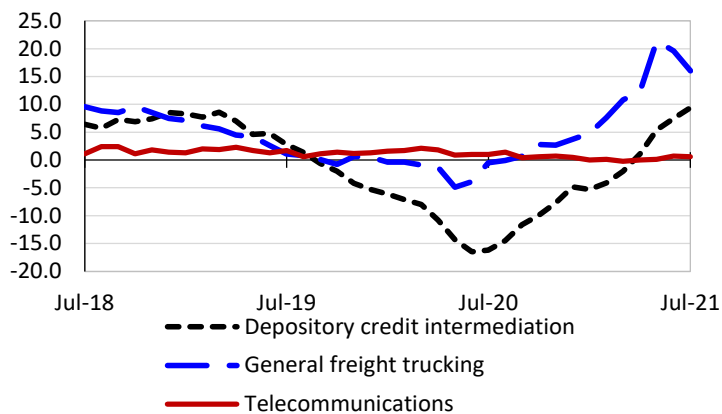
12-month percent change in CPI-U, July 2021



Source: U.S. BLS, Consumer Price Index.

Over-the-year changes in the selling prices received by producers for selected industries nationwide

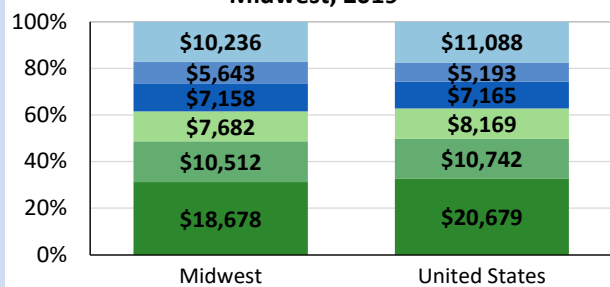
12-month percent changes in PPI



Source: U.S. BLS, Producer Price Index.

Average annual spending and percent distribution for selected categories

Average annual expenditures, United States and Midwest, 2019



Source: U.S. BLS, Consumer Expenditure Survey.

Average hourly wages for selected occupations

Occupation	Sioux Falls area	United States
All occupations	\$23.17	\$27.07
Management analysts	36.78	46.91
Registered nurses	29.70	38.47
Heavy and tractor-trailer truck drivers	22.48	23.42
Welders, cutters, solderers, and brazers	20.04	22.45
Retail salespersons	16.24	14.87
Receptionists and information clerks	14.49	15.58

Source: U.S. BLS, Occupational Employment and Wage Statistics, May 2020.

Employer costs per hour worked for wages and selected employee benefits by geographic division

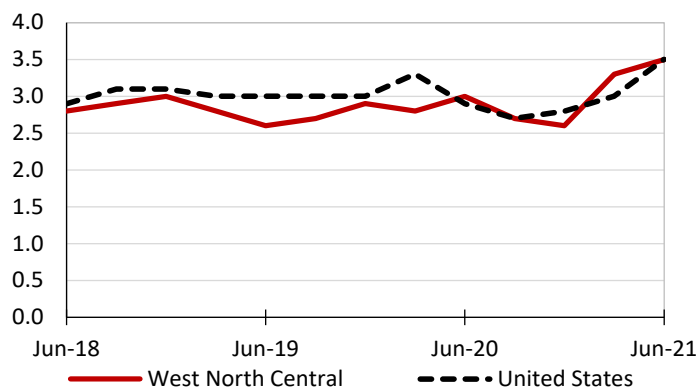
Private industry, March 2021	West North Central (1)	United States
Total compensation	\$33.20	\$36.64
Wages and salaries	23.02	25.80
Total benefits	10.18	10.83
Paid leave	2.40	2.72
Vacation	1.24	1.39
Supplemental pay	1.14	1.27
Insurance	3.07	2.83
Retirement and savings	1.05	1.25
Legally required benefits	2.53	2.77

(1) The states that compose the West North Central census division are: IA, KS, MN, MO, NE, ND, and SD.

Source: U.S. BLS, Employer Costs for Employee Compensation.

Over-the-year changes in wages and salaries

12-month percent changes in ECI



Source: U.S. BLS, Employment Cost Index.

