

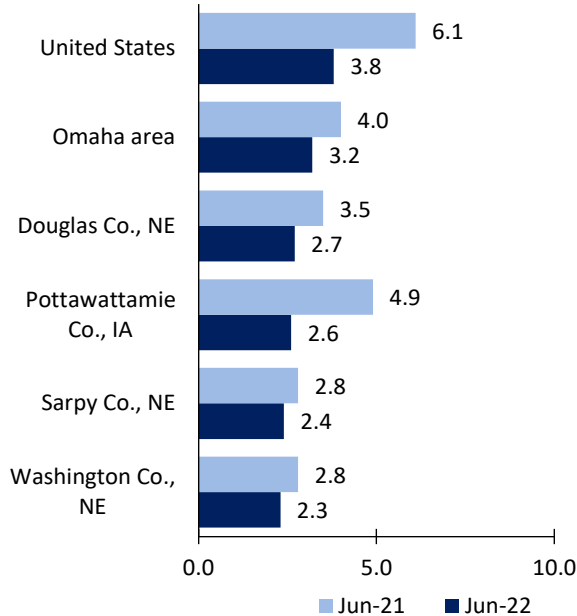
# Omaha Area Economic Summary

Updated August 03, 2022

This summary presents a sampling of economic information for the area; supplemental data are provided for regions and the nation. Subjects include **unemployment, employment, wages, prices, spending, and benefits**. All data are not seasonally adjusted and some may be subject to revision. Area definitions may differ by subject. For more area summaries and geographic definitions, see [www.bls.gov/regions/economic-summaries.htm](http://www.bls.gov/regions/economic-summaries.htm).

## Unemployment rates for the nation and selected areas

### Unemployment rates

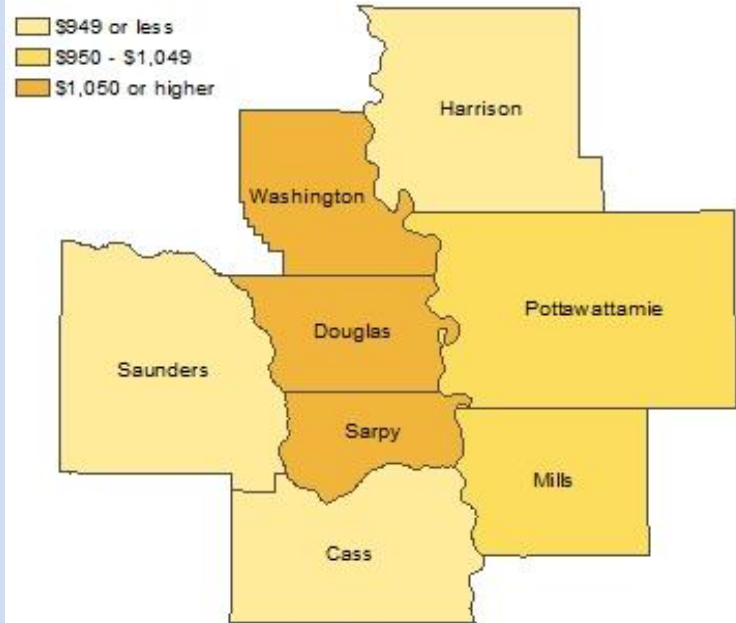


Source: U.S. BLS, Local Area Unemployment Statistics.

## Average weekly wages for all industries by county

### Omaha area, fourth quarter 2021

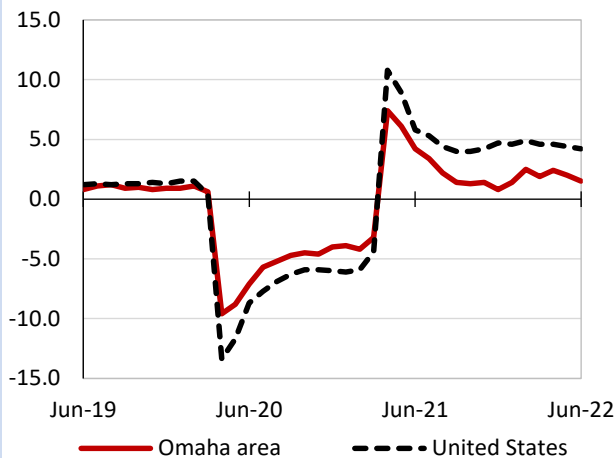
(U.S. = \$1,418; Area = \$1,237)



Source: U.S. BLS, Quarterly Census of Employment and Wages.

## Over-the-year changes in employment on nonfarm payrolls and employment by major industry sector

### 12-month percent changes in employment



Source: U.S. BLS, Current Employment Statistics.

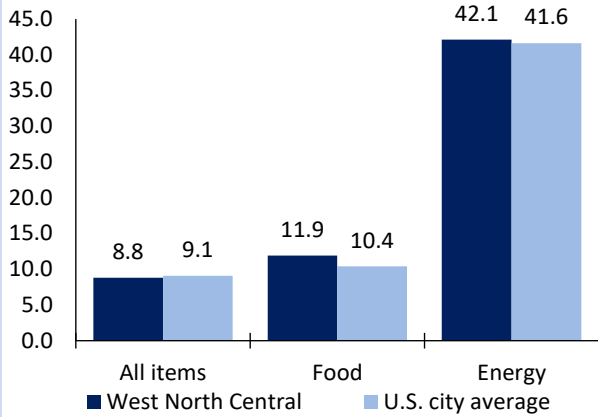
Omaha area employment (number in thousands)	Jun. 2022	Change from Jun. 2021 to Jun. 2022	
		Number	Percent
Total nonfarm	502.5	7.2	1.5
Mining, logging, and construction	33.1	1.7	5.4
Manufacturing	34.2	0.5	1.5
Trade, transportation, and utilities	94.3	2.2	2.4
Information	11.2	0.3	2.8
Financial activities	41.9	-1.1	-2.6
Professional and business services	72.3	2.6	3.7
Education and health services	80.4	1.0	1.3
Leisure and hospitality	50.3	-0.9	-1.8
Other services	18.6	0.5	2.8
Government	66.2	0.4	0.6

Source: U.S. BLS, Current Employment Statistics.



Over-the-year change in the prices paid by urban consumers for selected categories

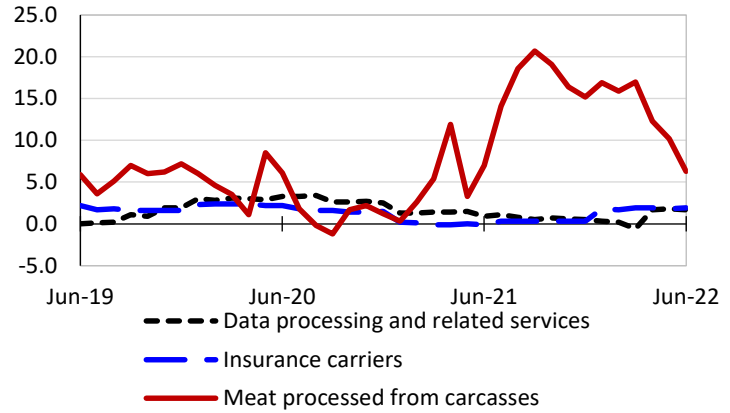
12-month percent change in CPI-U, June 2022



Source: U.S. BLS, Consumer Price Index.

Over-the-year changes in the selling prices received by producers for selected industries nationwide

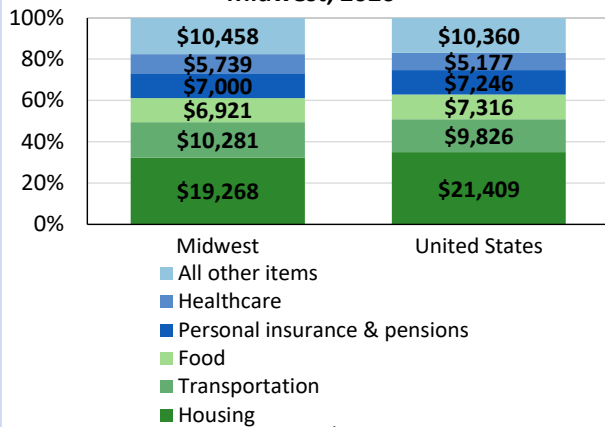
12-month percent changes in PPI



Source: U.S. BLS, Producer Price Index.

Average annual spending and percent distribution for selected categories

Average annual expenditures, United States and Midwest, 2020



Source: U.S. BLS, Consumer Expenditure Survey.

Average hourly wages for selected occupations

Occupation	Omaha area	United States
All occupations	\$26.43	\$28.01
Registered nurses	34.41	39.78
Compliance officers	33.51	36.45
Heavy and tractor-trailer truck drivers	26.81	24.20
Packaging and filling machine operators and tenders	18.83	17.67
Customer service representatives	18.08	18.79
Retail salespersons	14.28	15.35

Source: U.S. BLS, Occupational Employment and Wage Statistics, May 2021.

Employer costs per hour worked for wages and selected employee benefits by geographic division

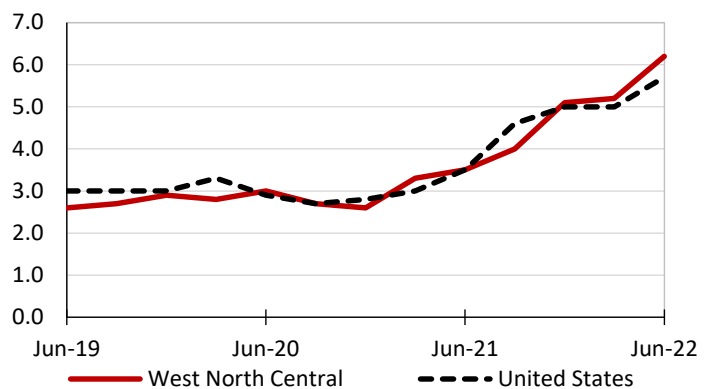
Private industry, March 2022	West North Central (1)	United States
Total compensation	\$34.86	\$38.61
Wages and salaries	24.00	27.19
Total benefits	10.86	11.42
Paid leave	2.51	2.88
Vacation	1.30	1.47
Supplemental pay	1.38	1.37
Insurance	3.23	2.93
Retirement and savings	1.11	1.33
Legally required benefits	2.63	2.91

(1) The states that compose the West North Central census division are: IA, KS, MN, MO, NE, ND, and SD.

Source: U.S. BLS, Employer Costs for Employee Compensation.

Over-the-year changes in wages and salaries

12-month percent changes in ECI



Source: U.S. BLS, Employment Cost Index.

