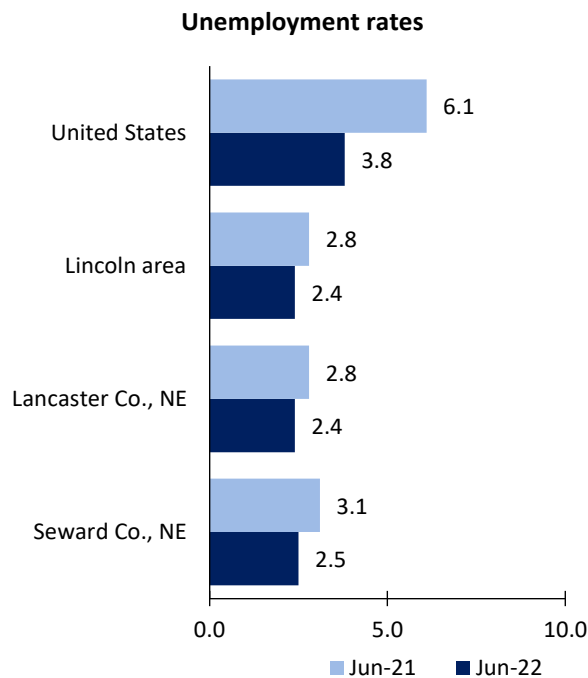


Lincoln Area Economic Summary

Updated August 03, 2022

This summary presents a sampling of economic information for the area; supplemental data are provided for regions and the nation. Subjects include **unemployment, employment, wages, prices, spending, and benefits**. All data are not seasonally adjusted and some may be subject to revision. Area definitions may differ by subject. For more area summaries and geographic definitions, see www.bls.gov/regions/economic-summaries.htm.

Unemployment rates for the nation and selected areas

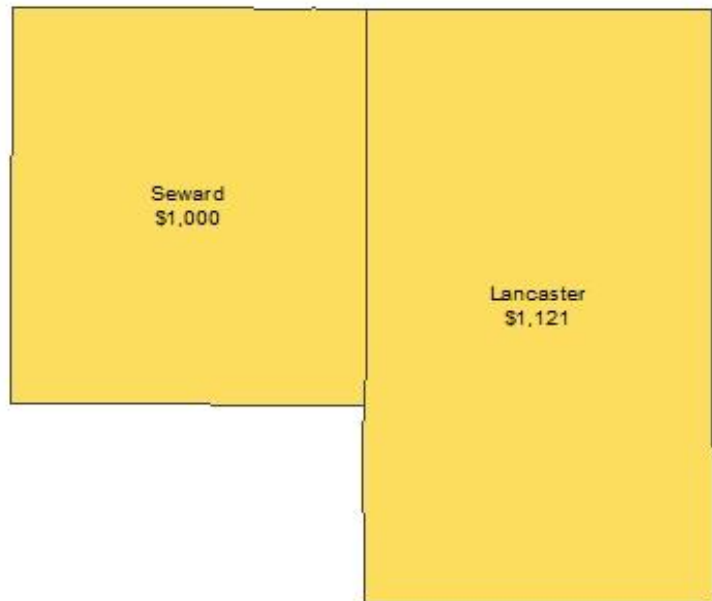


Source: U.S. BLS, Local Area Unemployment Statistics.

Average weekly wages for all industries by county

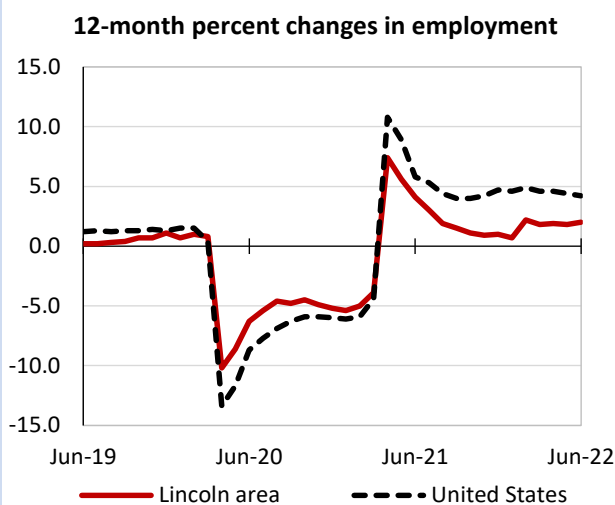
Lincoln area, fourth quarter 2021

(U.S. = \$1,418; Area = \$1,117)



Source: U.S. BLS, Quarterly Census of Employment and Wages.

Over-the-year changes in employment on nonfarm payrolls and employment by major industry sector



Source: U.S. BLS, Current Employment Statistics.

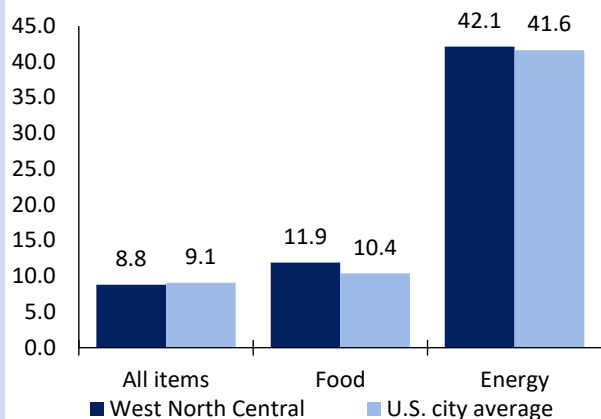
| Lincoln area employment (number in thousands) | Jun. 2022 | Change from Jun. 2021 to Jun. 2022 | |
|--|-----------|------------------------------------|---------|
| | | Number | Percent |
| Total nonfarm | 190.3 | 3.7 | 2.0 |
| Mining, logging, and construction | 11.0 | 0.4 | 3.8 |
| Manufacturing | 13.8 | 0.3 | 2.2 |
| Trade, transportation, and utilities | 33.7 | 1.2 | 3.7 |
| Information | 3.4 | 0.0 | 0.0 |
| Financial activities | 10.8 | -0.6 | -5.3 |
| Professional and business services | 21.1 | 0.1 | 0.5 |
| Education and health services | 30.8 | 0.6 | 2.0 |
| Leisure and hospitality | 18.6 | 1.5 | 8.8 |
| Other services | 7.1 | -0.1 | -1.4 |
| Government | 40.0 | 0.3 | 0.8 |

Source: U.S. BLS, Current Employment Statistics.



Over-the-year change in the prices paid by urban consumers for selected categories

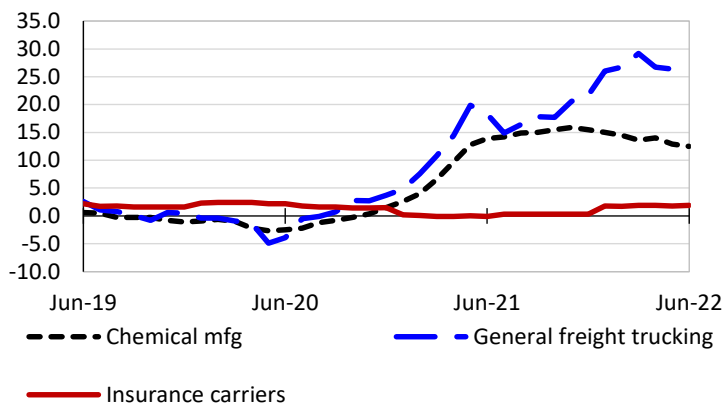
12-month percent change in CPI-U, June 2022



Source: U.S. BLS, Consumer Price Index.

Over-the-year changes in the selling prices received by producers for selected industries nationwide

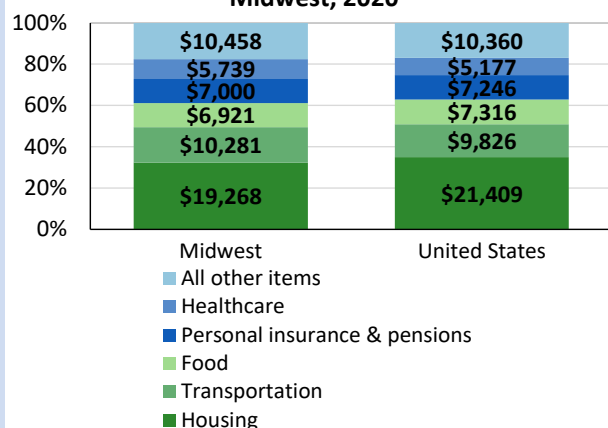
12-month percent changes in PPI



Source: U.S. BLS, Producer Price Index.

Average annual spending and percent distribution for selected categories

Average annual expenditures, United States and Midwest, 2020



Source: U.S. BLS, Consumer Expenditure Survey.

Average hourly wages for selected occupations

| Occupation | Lincoln area | United States |
|--|--------------|---------------|
| All occupations | \$24.99 | \$28.01 |
| Compliance officers | 35.06 | 36.45 |
| Registered nurses | 33.39 | 39.78 |
| Career/technical education teachers, postsecondary | 28.52 | 30.35 |
| Welders, cutters, solderers, and brazers | 23.05 | 23.21 |
| Bookkeeping, accounting, and auditing clerks | 19.47 | 21.70 |
| Refuse and recyclable material collectors | 17.35 | 20.57 |

Source: U.S. BLS, Occupational Employment and Wage Statistics, May 2021.

Employer costs per hour worked for wages and selected employee benefits by geographic division

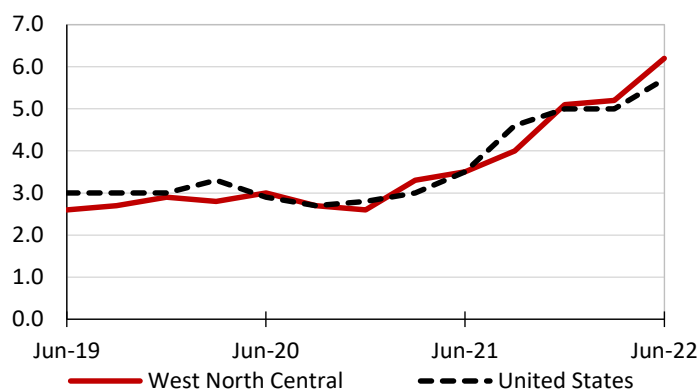
| Private industry, March 2022 | West North Central (1) | United States |
|------------------------------|------------------------|---------------|
| Total compensation | \$34.86 | \$38.61 |
| Wages and salaries | 24.00 | 27.19 |
| Total benefits | 10.86 | 11.42 |
| Paid leave | 2.51 | 2.88 |
| Vacation | 1.30 | 1.47 |
| Supplemental pay | 1.38 | 1.37 |
| Insurance | 3.23 | 2.93 |
| Retirement and savings | 1.11 | 1.33 |
| Legally required benefits | 2.63 | 2.91 |

(1) The states that compose the West North Central census division are: IA, KS, MN, MO, NE, ND, and SD.

Source: U.S. BLS, Employer Costs for Employee Compensation.

Over-the-year changes in wages and salaries

12-month percent changes in ECI



Source: U.S. BLS, Employment Cost Index.