

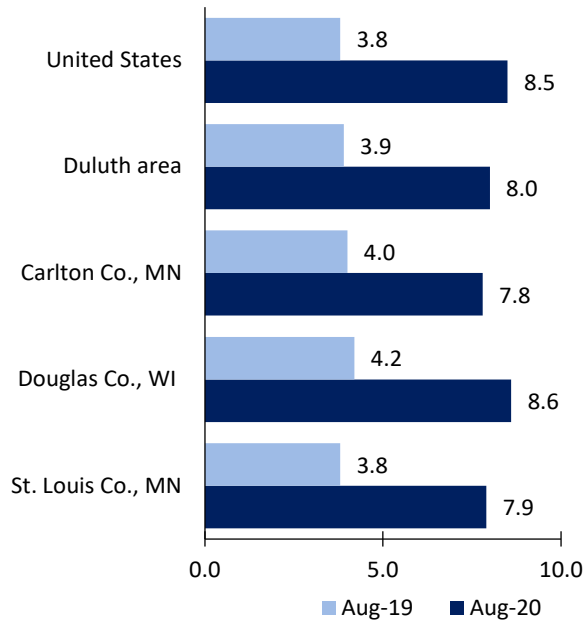
Duluth Area Economic Summary

Updated October 01, 2020

This summary presents a sampling of economic information for the area; supplemental data are provided for regions and the nation. Subjects include **unemployment, employment, wages, prices, spending, and benefits**. All data are not seasonally adjusted and some may be subject to revision. Area definitions may differ by subject. For more area summaries and geographic definitions, see www.bls.gov/regions/economic-summaries.htm.

Unemployment rates for the nation and selected areas

Unemployment rates

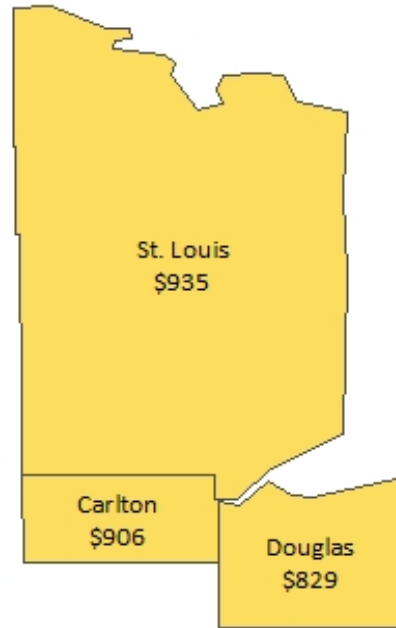


Source: U.S. BLS, Local Area Unemployment Statistics.

Average weekly wages for all industries by county

Duluth area, first quarter 2020

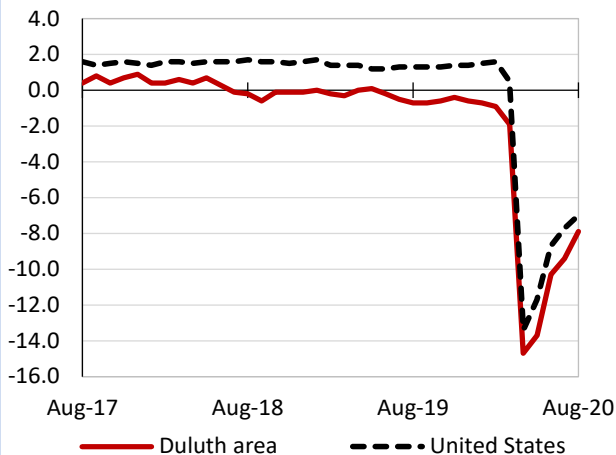
(U.S. = \$1,222; Area = \$919)



Source: U.S. BLS, Quarterly Census of Employment and Wages.

Over-the-year changes in employment on nonfarm payrolls and employment by major industry sector

12-month percent changes in employment



Source: U.S. BLS, Current Employment Statistics.

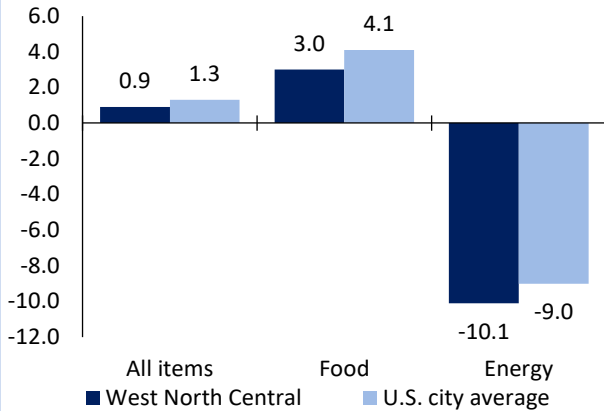
Duluth area employment (number in thousands)	Aug. 2020	Change from Aug. 2019 to Aug. 2020	
		Number	Percent
Total nonfarm	124.4	-10.7	-7.9
Mining, logging, and construction	9.0	-1.2	-11.8
Manufacturing	7.7	-0.5	-6.1
Trade, transportation, and utilities	24.0	-0.5	-2.0
Information	1.1	-0.2	-15.4
Financial activities	5.1	-0.5	-8.9
Professional and business services	7.7	0.0	0.0
Education and health services	30.7	-1.0	-3.2
Leisure and hospitality	11.0	-5.4	-32.9
Other services	6.1	-0.3	-4.7
Government	22.0	-1.1	-4.8

Source: U.S. BLS, Current Employment Statistics.



Over-the-year change in the prices paid by urban consumers for selected categories

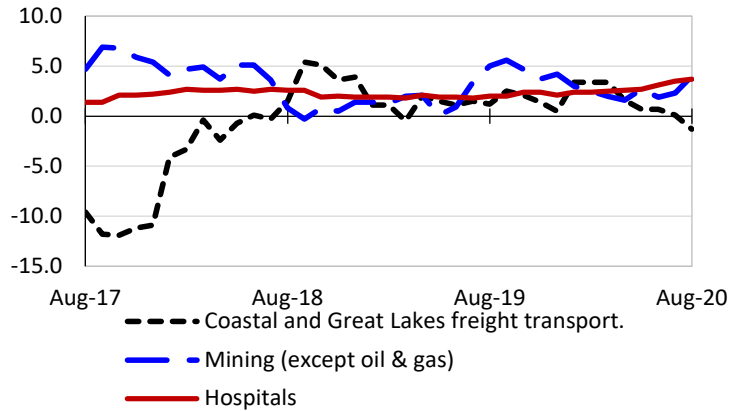
12-month percent change in CPI-U, August 2020



Source: U.S. BLS, Consumer Price Index.

Over-the-year changes in the selling prices received by producers for selected industries nationwide

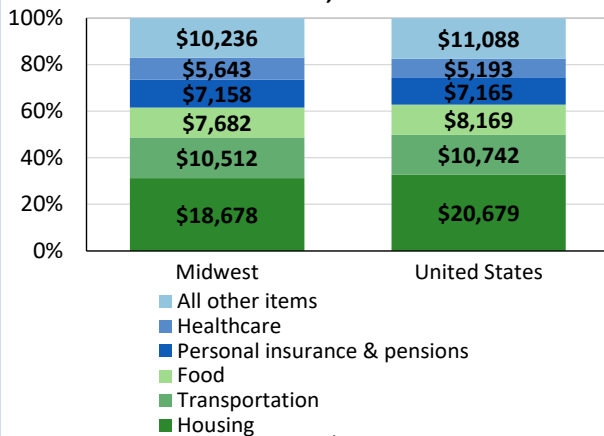
12-month percent changes in PPI



Source: U.S. BLS, Producer Price Index.

Average annual spending and percent distribution for selected categories

Average annual expenditures, United States and Midwest, 2019



Source: U.S. BLS, Consumer Expenditure Survey.

Average hourly wages for selected occupations

Occupation	Duluth area	United States
All occupations	\$23.27	\$25.72
Occupational health and safety specialists	35.81	36.68
Insurance sales agents	35.04	32.59
Mental health and substance abuse social workers	28.66	24.84
Career/technical education teachers, postsecondary	27.56	29.05
Heavy and tractor-trailer truck drivers	24.48	22.52
Cooks, restaurant	13.68	13.80

Source: U.S. BLS, Occupational Employment Statistics, May 2019.

Employer costs per hour worked for wages and selected employee benefits by geographic division

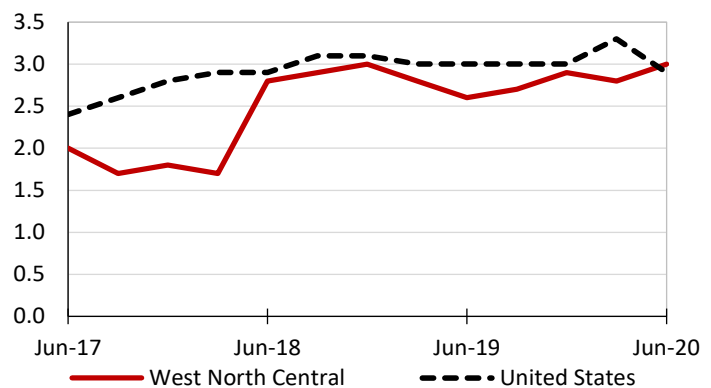
Private industry, June 2020	West North Central (1)	United States
Total compensation	\$32.62	\$35.96
Wages and salaries	22.73	25.18
Total benefits	9.89	10.79
Paid leave	2.32	2.63
Vacation	1.22	1.35
Supplemental pay	1.10	1.23
Insurance	2.93	2.89
Retirement and savings	1.03	1.29
Legally required benefits	2.50	2.74

(1) The states that compose the West North Central census division are: IA, KS, MN, MO, NE, ND, and SD.

Source: U.S. BLS, Employer Costs for Employee Compensation.

Over-the-year changes in wages and salaries

12-month percent changes in ECI



Source: U.S. BLS, Employment Cost Index.

