

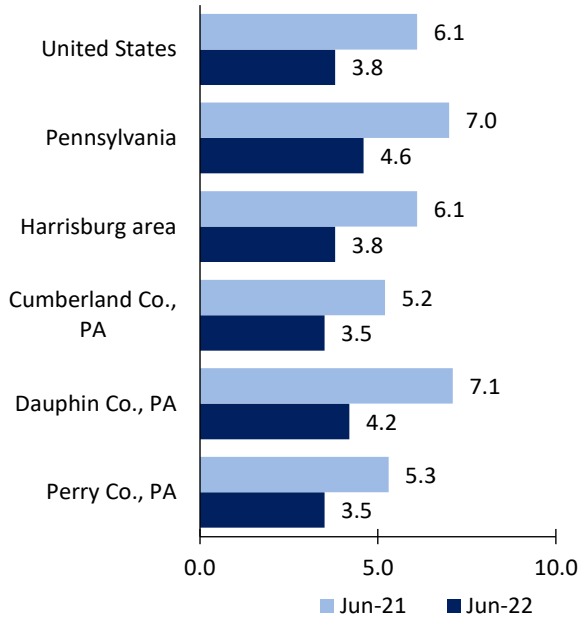
Harrisburg area Economic Summary

Updated August 04, 2022

This summary presents a sampling of economic information for the area; supplemental data are provided for regions and the nation. Subjects include **unemployment, employment, wages, prices, spending, and benefits**. All data are not seasonally adjusted and some may be subject to revision. Area definitions may differ by subject. For more area summaries and geographic definitions, see www.bls.gov/regions/economic-summaries.htm.

Unemployment rates for the nation and selected areas

Unemployment rates

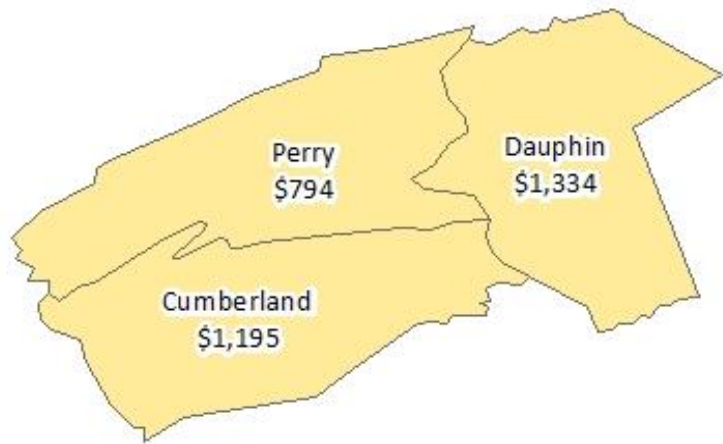


Source: U.S. BLS, Local Area Unemployment Statistics.

Average weekly wages for all industries by county

Harrisburg area, fourth quarter 2021

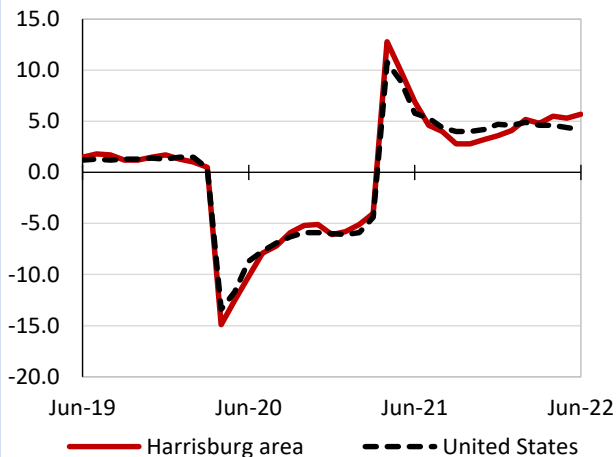
(U.S. = \$1,418; Area = \$1,263)



Source: U.S. BLS, Quarterly Census of Employment and Wages.

Over-the-year changes in employment on nonfarm payrolls and employment by major industry sector

12-month percent changes in employment



Source: U.S. BLS, Current Employment Statistics.

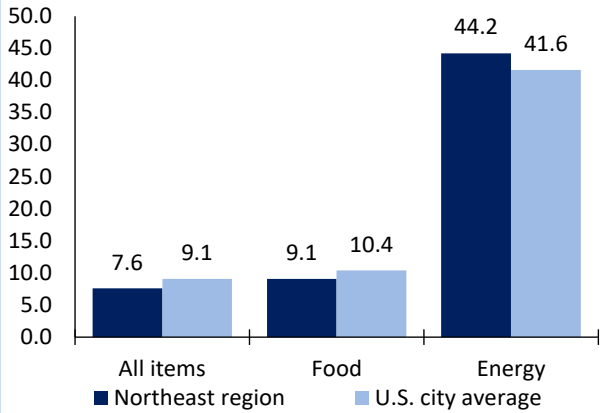
Harrisburg area employment (number in thousands)	Jun. 2022	Change from Jun. 2021 to Jun. 2022	
		Number	Percent
Total nonfarm	359.9	19.4	5.7
Mining, logging, and construction	12.8	0.5	4.1
Manufacturing	23.2	1.4	6.4
Trade, transportation, and utilities	80.2	7.4	10.2
Information	3.4	-0.1	-2.9
Financial activities	20.4	-1.0	-4.7
Professional and business services	52.1	2.6	5.3
Education and health services	64.2	4.0	6.6
Leisure and hospitality	32.7	3.7	12.8
Other services	14.5	0.4	2.8
Government	56.4	0.5	0.9

Source: U.S. BLS, Current Employment Statistics.



Over-the-year change in the prices paid by urban consumers for selected categories

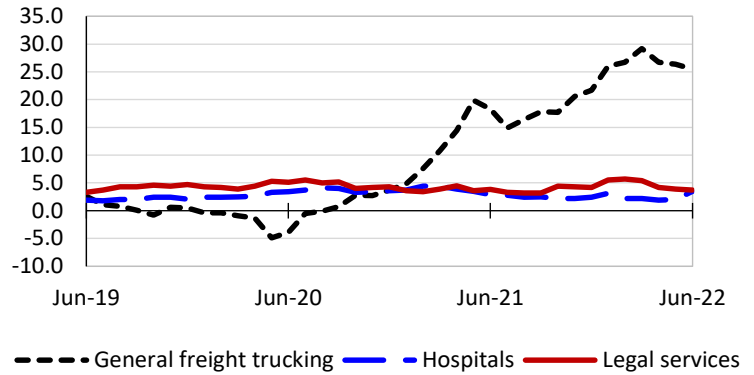
12-month percent change in CPI-U, June 2022



Source: U.S. BLS, Consumer Price Index.

Over-the-year changes in the selling prices received by producers for selected industries nationwide

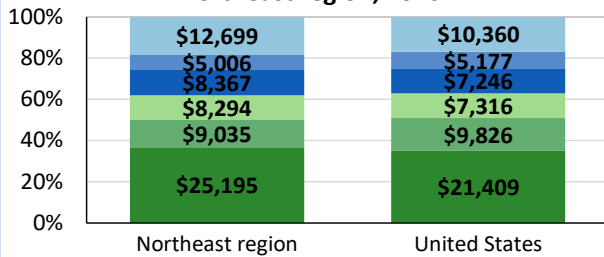
12-month percent changes in PPI



Source: U.S. BLS, Producer Price Index.

Average annual spending and percent distribution for selected categories

Average annual expenditures, United States and Northeast region, 2020



Source: U.S. BLS, Consumer Expenditure Survey.

Average hourly wages for selected occupations

Occupation	Harrisburg area	United States
All occupations	\$26.14	\$28.01
Lawyers	57.82	71.17
Management analysts	36.73	48.33
Accountants and auditors	35.12	40.37
Paralegals and legal assistants	27.33	28.04
Industrial truck and tractor operators	20.10	19.69
Office clerks, general	19.43	18.75

Source: U.S. BLS, Occupational Employment and Wage Statistics, May 2021.

Employer costs per hour worked for wages and selected employee benefits by geographic division

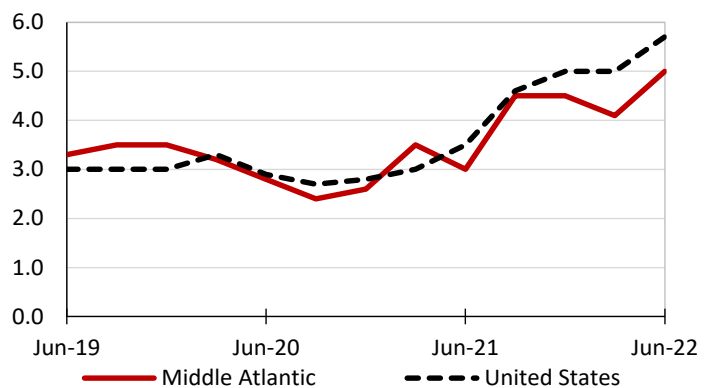
Private industry, March 2022	Middle Atlantic	United States
Total compensation	\$43.04	\$38.61
Wages and salaries	29.68	27.19
Total benefits	13.36	11.42
Paid leave	3.38	2.88
Vacation	1.69	1.47
Supplemental pay	1.50	1.37
Insurance	3.48	2.93
Retirement and savings	1.67	1.33
Legally required benefits	3.33	2.91

(1) The states that compose the Middle Atlantic census division are: NJ, NY, and PA.

Source: U.S. BLS, Employer Costs for Employee Compensation.

Over-the-year changes in wages and salaries

12-month percent changes in ECI



Source: U.S. BLS, Employment Cost Index.

