

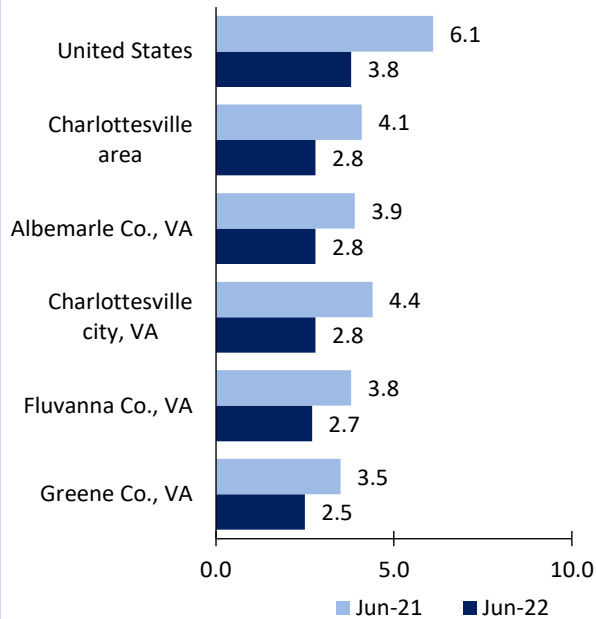
# Charlottesville area Economic Summary

Updated August 04, 2022

This summary presents a sampling of economic information for the area; supplemental data are provided for regions and the nation. Subjects include **unemployment, employment, wages, prices, spending, and benefits**. All data are not seasonally adjusted and some may be subject to revision. Area definitions may differ by subject. For more area summaries and geographic definitions, see [www.bls.gov/regions/economic-summaries.htm](http://www.bls.gov/regions/economic-summaries.htm).

## Unemployment rates for the nation and selected areas

### Unemployment rates



Source: U.S. BLS, Local Area Unemployment Statistics.

## Average weekly wages for all industries by county

### Charlottesville area, fourth quarter 2021

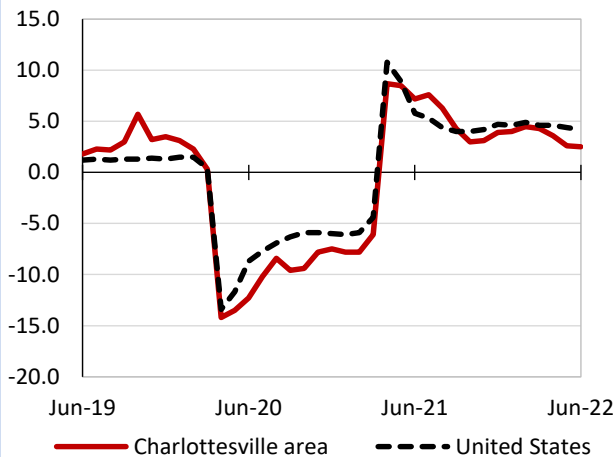
(U.S. = \$1,418; Area = \$1,392)



Source: U.S. BLS, Quarterly Census of Employment and Wages.

## Over-the-year changes in employment on nonfarm payrolls and employment by major industry sector

### 12-month percent changes in employment



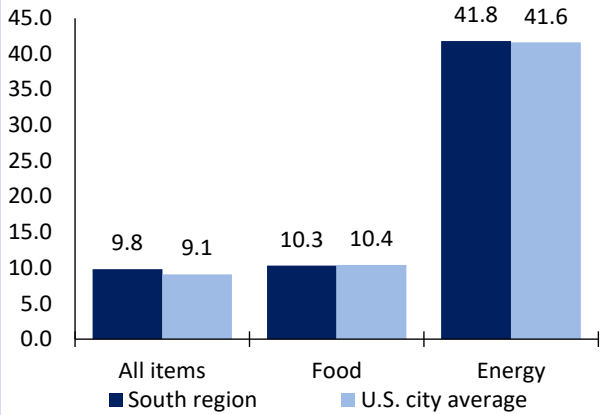
Source: U.S. BLS, Current Employment Statistics.

Charlottesville area employment (number in thousands)	Jun. 2022	Change from Jun. 2021 to Jun. 2022	
		Number	Percent
Total nonfarm	117.2	2.9	2.5
Mining, logging, and construction	5.5	-0.1	-1.8
Manufacturing	4.2	-0.1	-2.3
Trade, transportation, and utilities	15.0	0.2	1.4
Information	1.8	0.0	0.0
Financial activities	4.9	-0.2	-3.9
Professional and business services	16.7	0.5	3.1
Education and health services	14.8	0.3	2.1
Leisure and hospitality	14.2	2.0	16.4
Other services	5.8	0.2	3.6
Government	34.3	0.1	0.3

Source: U.S. BLS, Current Employment Statistics.

Over-the-year change in the prices paid by urban consumers for selected categories

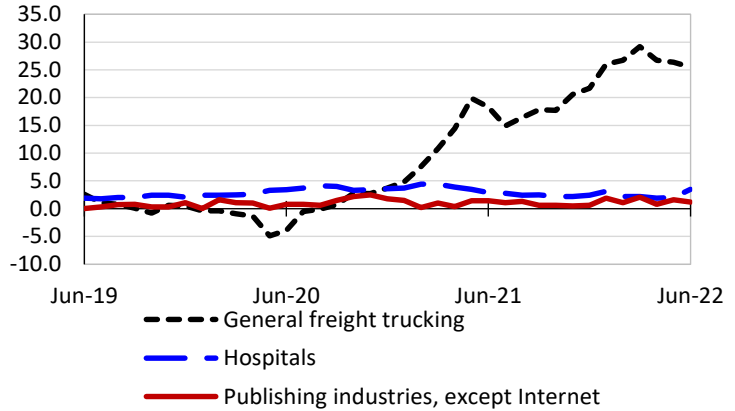
12-month percent change in CPI-U, June 2022



Source: U.S. BLS, Consumer Price Index.

Over-the-year changes in the selling prices received by producers for selected industries nationwide

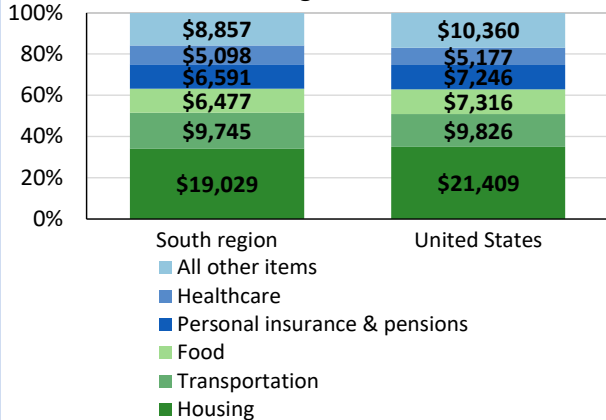
12-month percent changes in PPI



Source: U.S. BLS, Producer Price Index.

Average annual spending and percent distribution for selected categories

Average annual expenditures, United States and South region, 2020



Source: U.S. BLS, Consumer Expenditure Survey.

Average hourly wages for selected occupations

Occupation	Charlottesville area	United States
All occupations	\$28.44	\$28.01
Registered nurses	36.51	39.78
Editors	33.45	36.73
Carpenters	21.39	26.53
Recreation workers	14.02	15.39
Maids and housekeeping cleaners	13.38	14.22
Cashiers	11.83	12.87

Source: U.S. BLS, Occupational Employment and Wage Statistics, May 2021.

Employer costs per hour worked for wages and selected employee benefits by geographic division

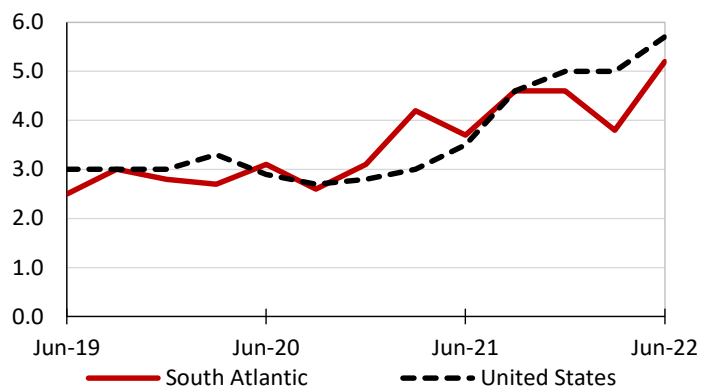
Private industry, March 2022	South Atlantic	United States
Total compensation	\$35.26	\$38.61
Wages and salaries	25.50	27.19
Total benefits	9.76	11.42
Paid leave	2.63	2.88
Vacation	1.34	1.47
Supplemental pay	1.10	1.37
Insurance	2.34	2.93
Retirement and savings	1.05	1.33
Legally required benefits	2.64	2.91

(1) The states that compose the South Atlantic census division are: DE, DC, FL, GA, MD, NC, SC, VA, and WV.

Source: U.S. BLS, Employer Costs for Employee Compensation.

Over-the-year changes in wages and salaries

12-month percent changes in ECI



Source: U.S. BLS, Employment Cost Index.

