

Pandemic-related Spending Changes: Comparing 2019 and 2020 in Consumer Expenditures

Jeffrey Hill

Associate Commissioner for Prices and Living Conditions
U.S. Bureau of Labor Statistics

Boston Data Users' Conference

May 18, 2022

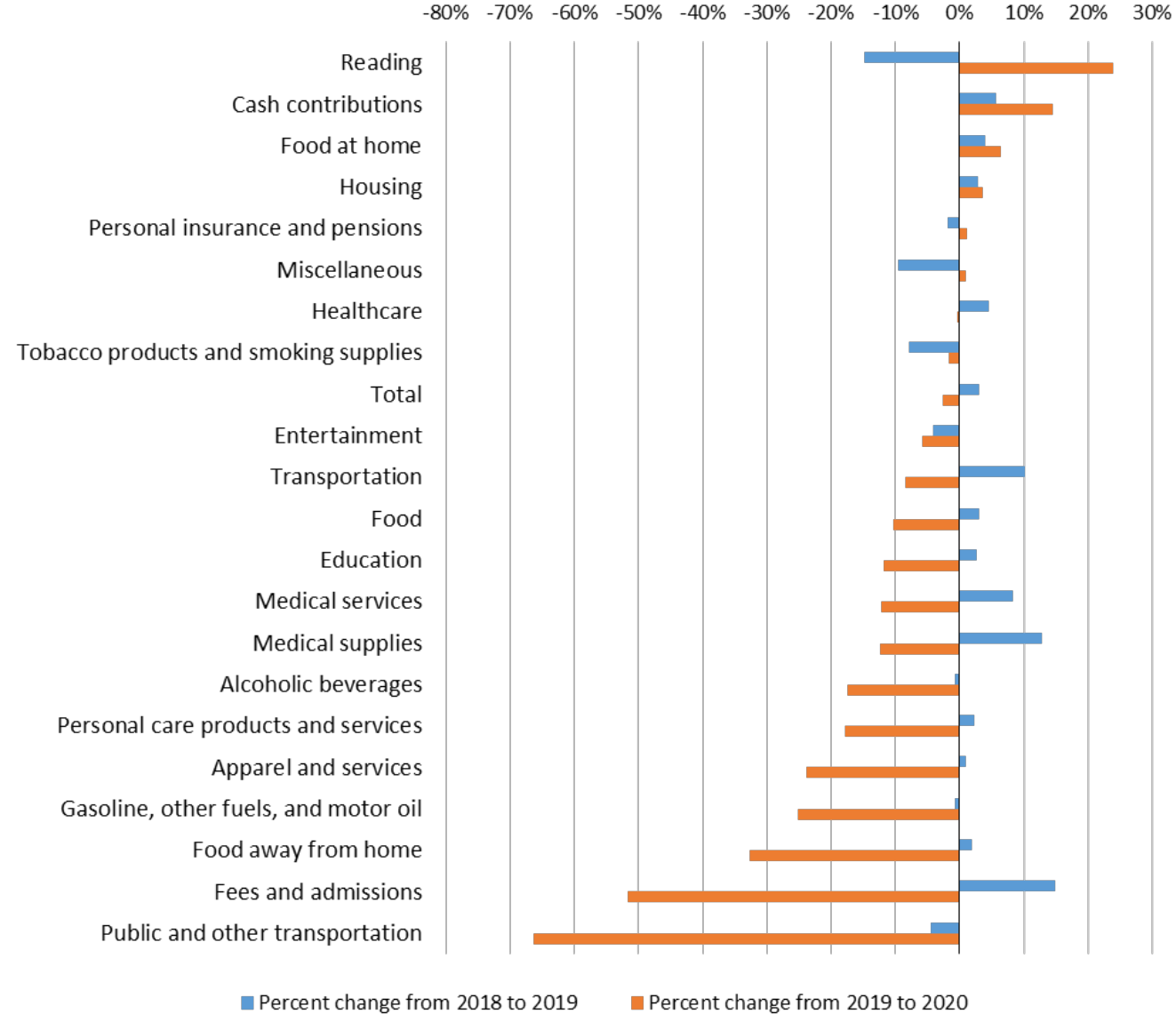


The pandemic brought:

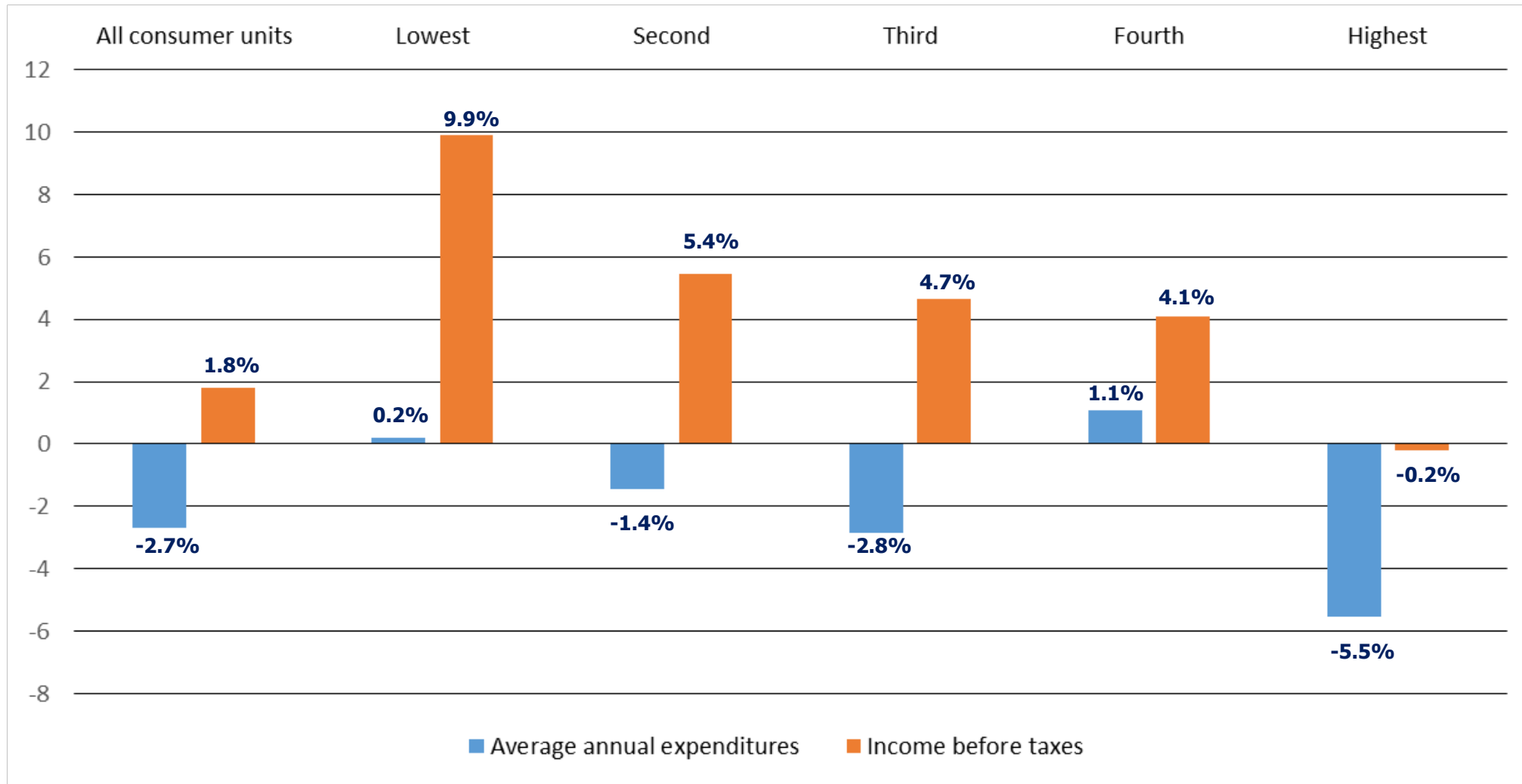
- Big changes in supply and demand.
 - ▶ Oil prices plummeted.
 - ▶ Airline fares dropped.
 - ▶ Factories closed, decreasing supply of certain goods.
 - ▶ People spent money on goods and services differently, and overall less.
- Stimulus / recovery funds.
- Inflation.



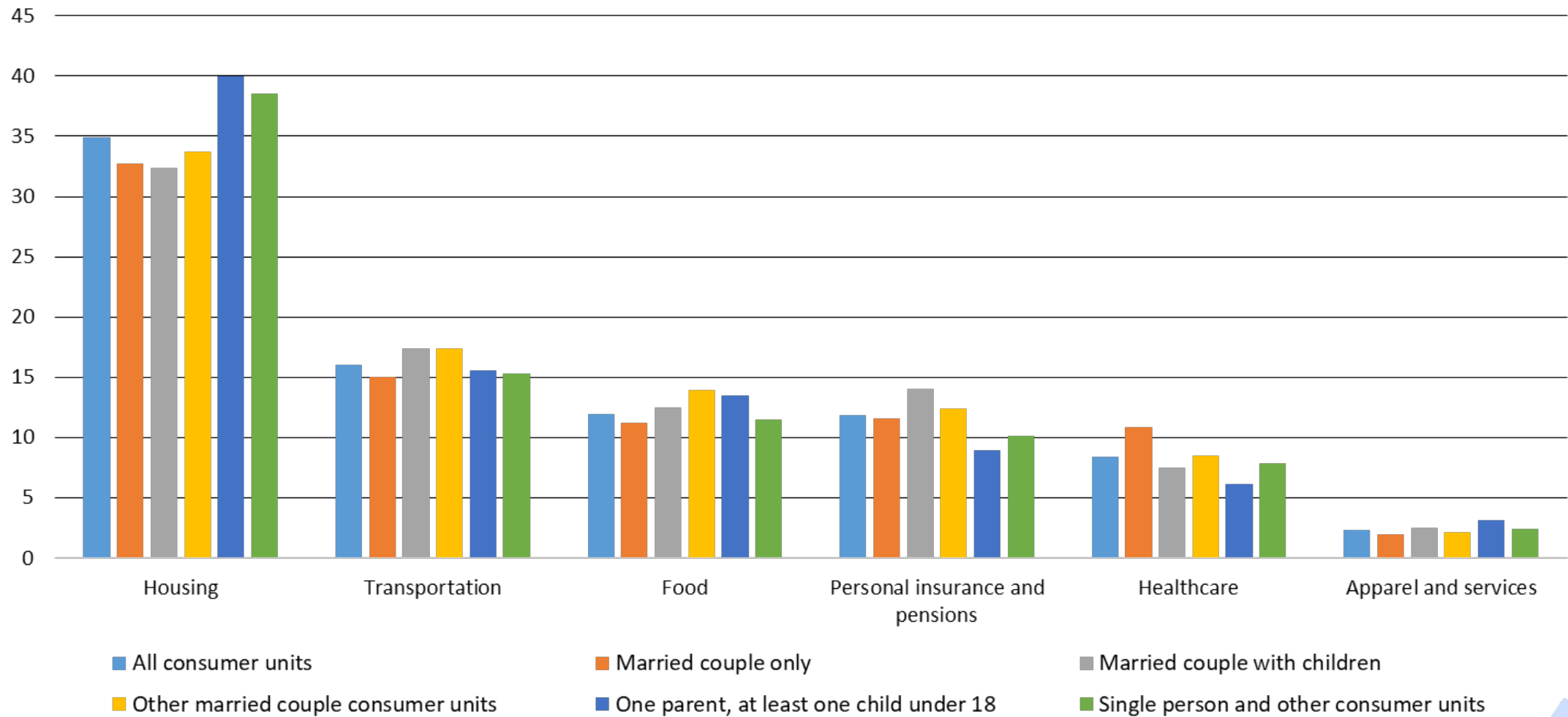
Percent change in average household spending for selected items, 2019–2020



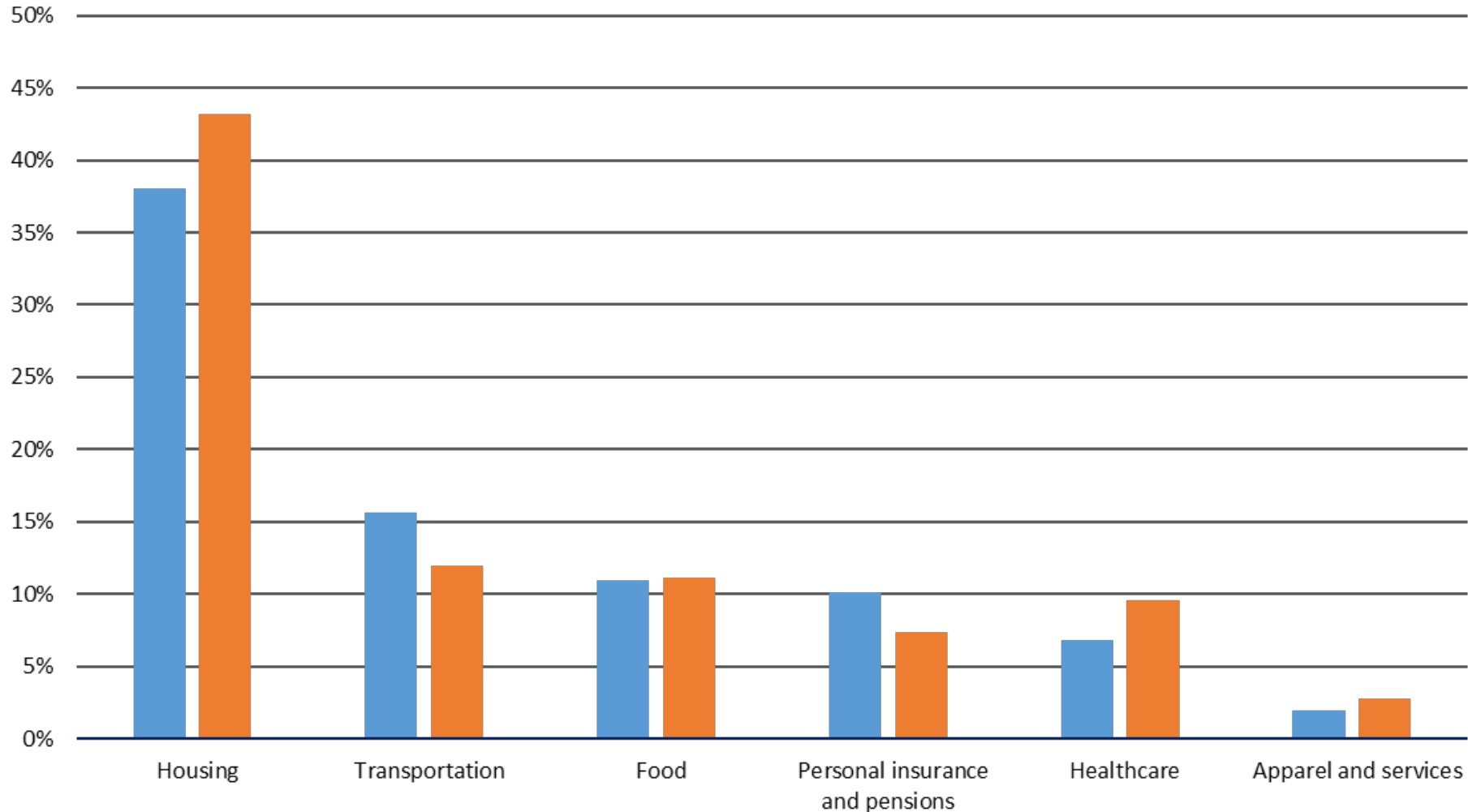
Annual percent change in average expenditures and income before taxes by income quintile, 2019 - 2020



Shares of average annual expenditures on selected major components by composition of consumer unit, 2020



Shares of average annual expenditures on selected major components, by gender, singles only, 2020

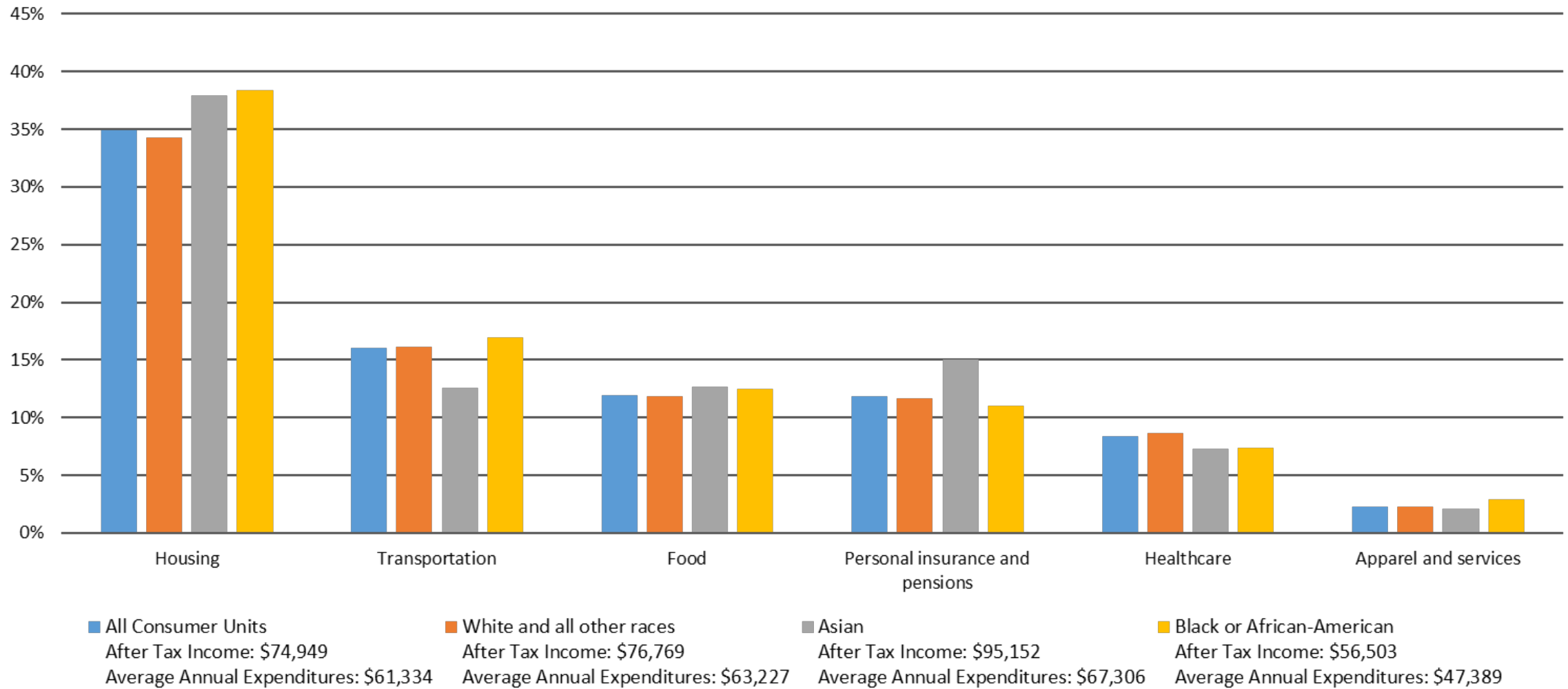


■ Male
 After Tax Income: \$43,307
 Average Annual Expenditures: \$40,647

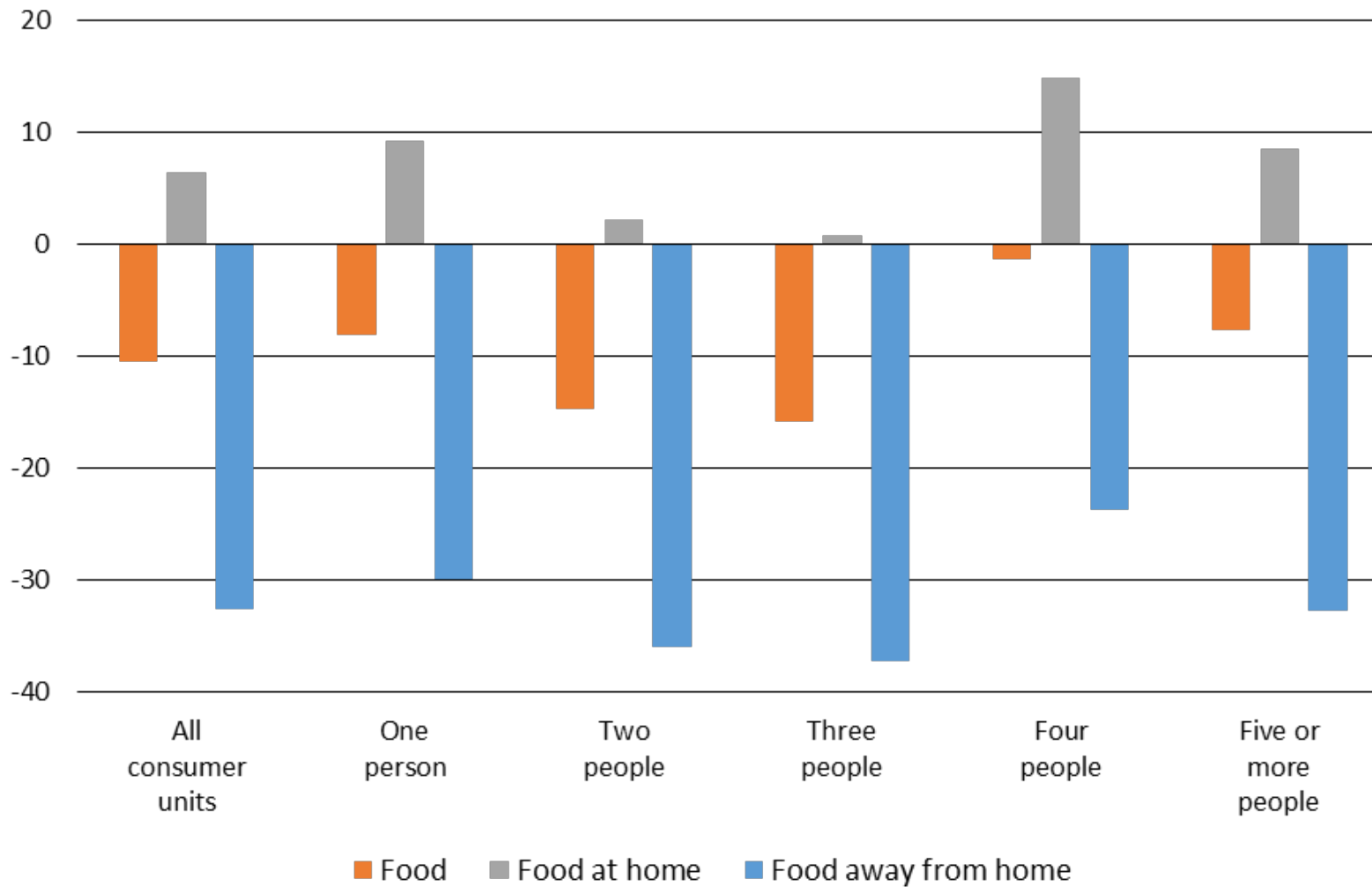
■ Female
 After Tax Income: \$34,781
 Average Annual Expenditures: \$37,474



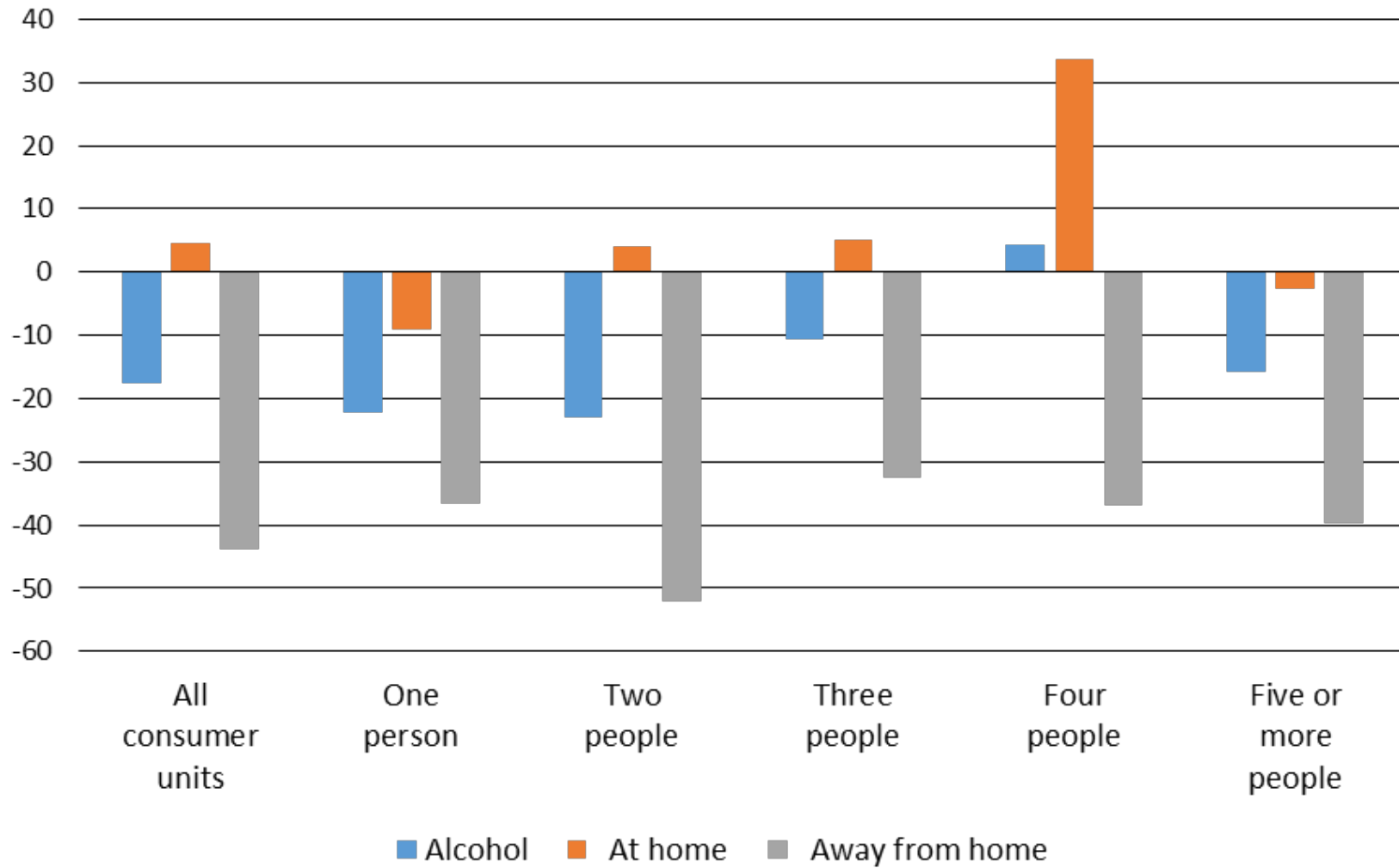
Shares of average annual expenditures on selected major components, by race, 2020



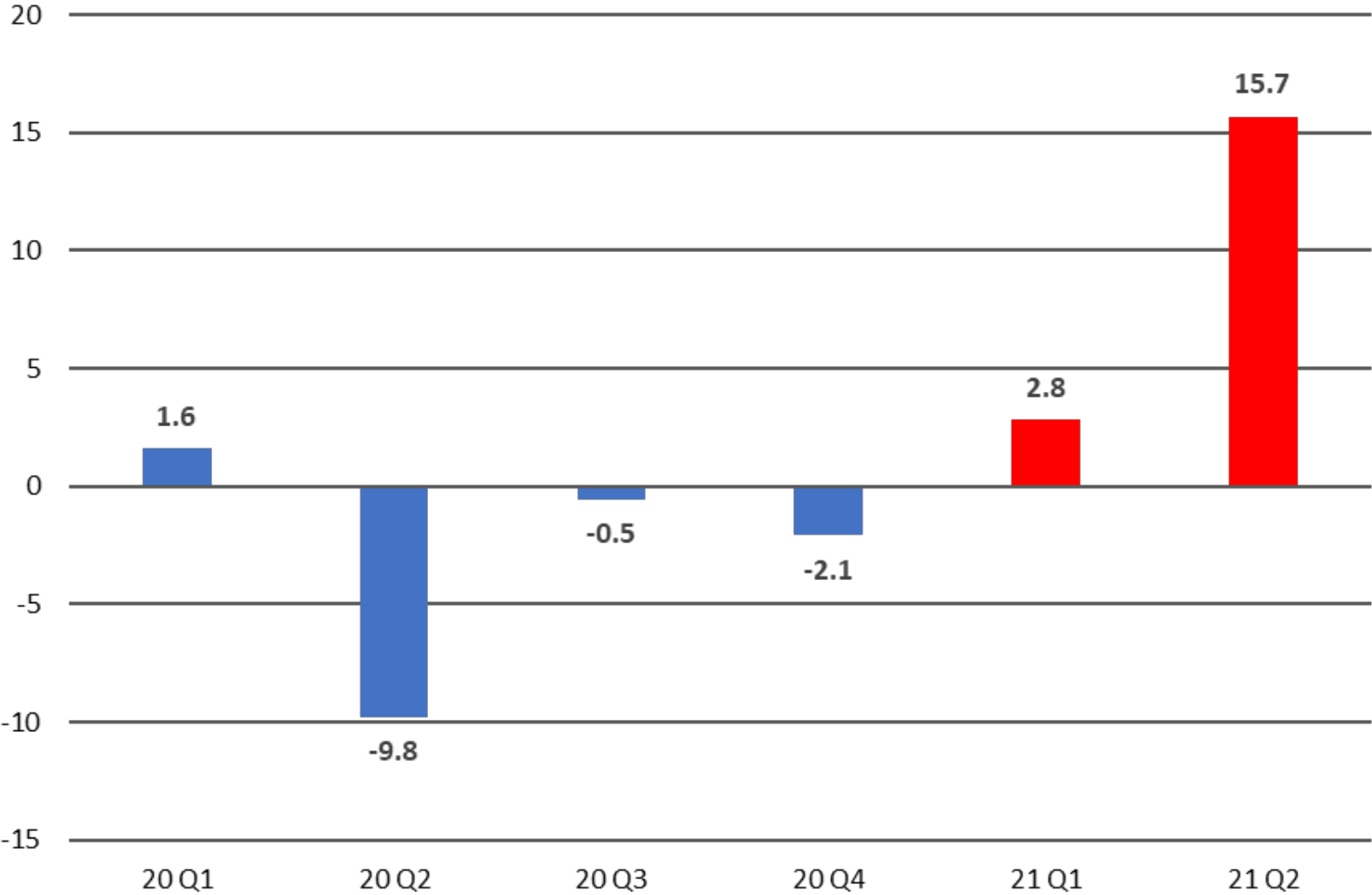
Annual percent change in average food expenditures, by size of consumer unit, 2020



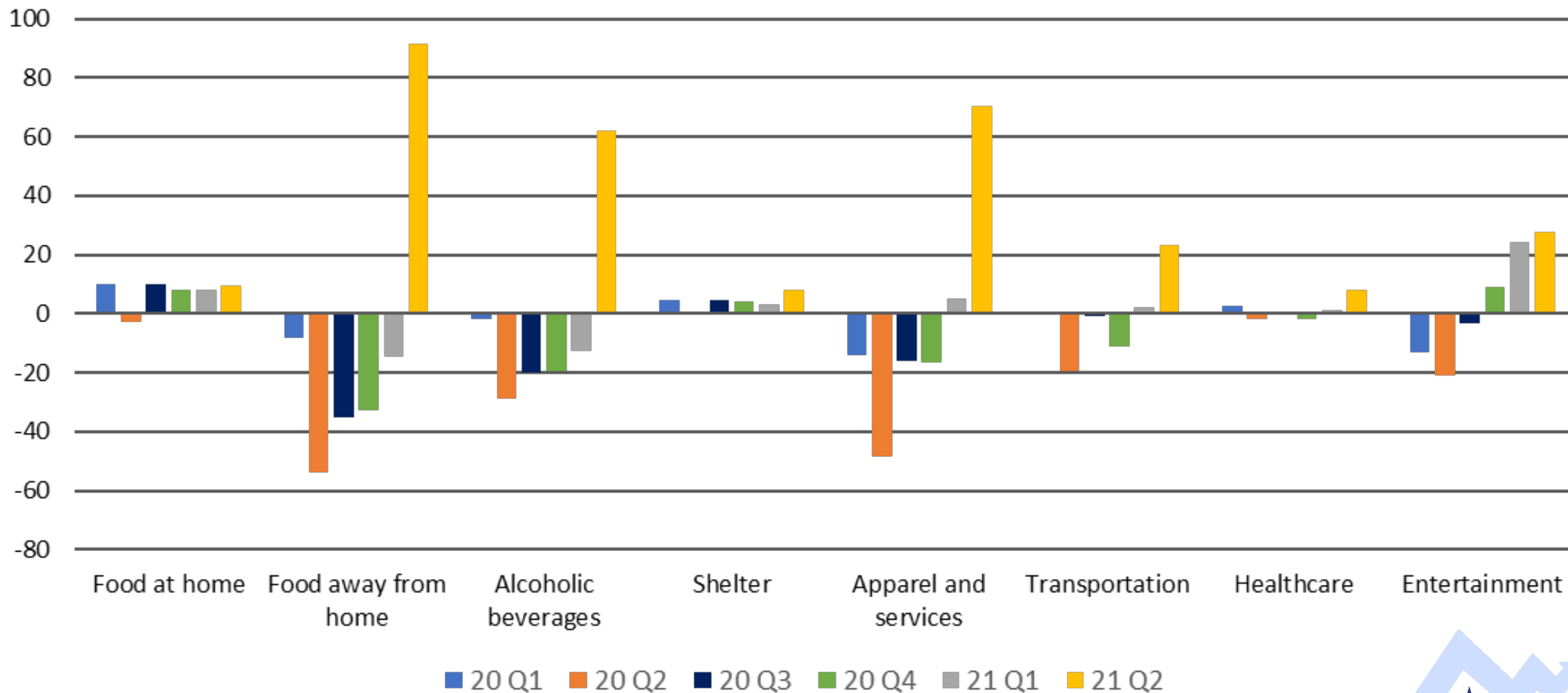
Annual percent change in average alcohol expenditures, by size of consumer unit, 2020



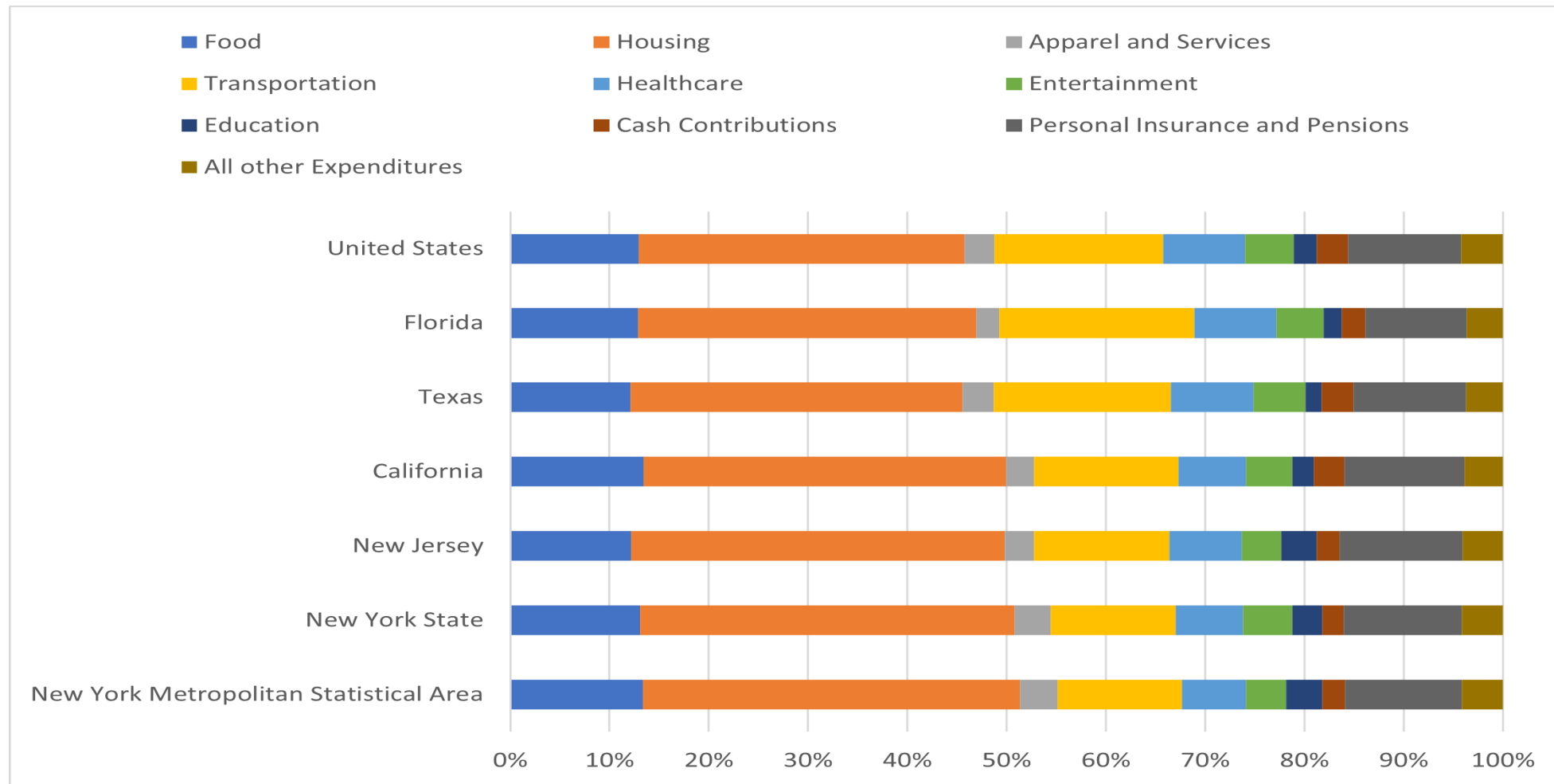
First look at 2021 data: over the year percent changes in total expenditures, 2019-20 and 2020-21



First look at 2021 data: over the year percent changes in selected major categories, 2019-20 and 2020-21



Shares of total household expenditures in the United States, Florida, Texas, California, New Jersey, and New York, by category, 2019



CE Tables

■ Data reflects many demographic characteristics:

- Pre-tax income class
- Income class
- Quintiles of income
- Composition of CU
- Size of CU
- Age of reference person
- Selected age of reference person
- Highest level of education of member
- Race
- Hispanic origin
- Housing tenure
- Number of earners
- Occupation
- Population size of area
- Census Region
- Census Division
- Deciles of income
- Generation
- Type of Area

Contact Information

Jeffrey Hill

hill.jeffrey@bls.gov | 202.691.6960

Consumer Expenditure Surveys

cexinfo@bls.gov | 202.691.6900

