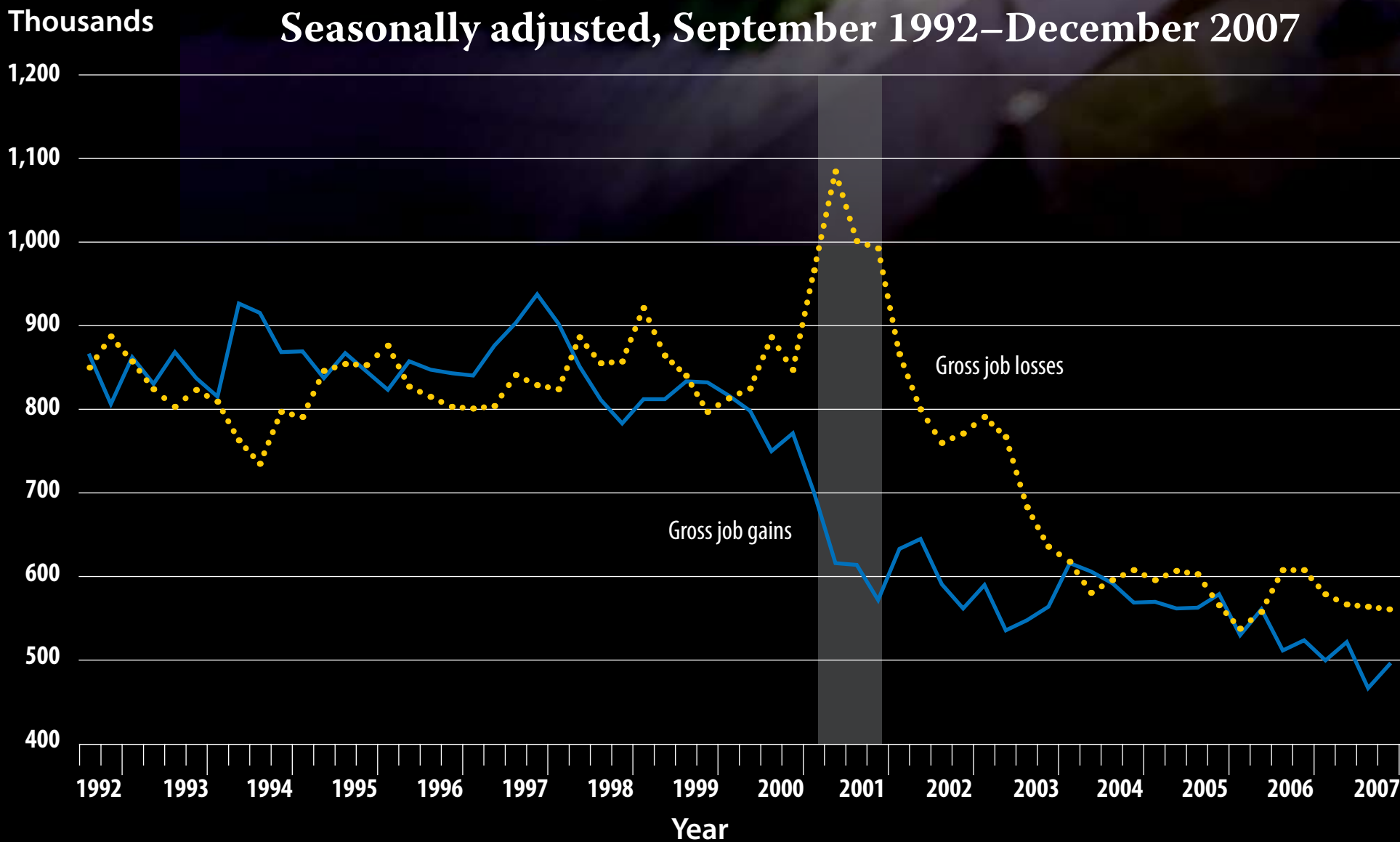


Manufacturing gross job losses exceeded gross job gains by the largest amount—468,000 jobs—during the recession in June 2001.

🔔 **Gross job losses in manufacturing have exceeded gross job gains in 34 of the last 40 quarters. The net loss in jobs over that 10-year timeframe, which spans March 1998 through December 2007, was 3.98 million.**



FIGURE 15 Private-sector gross job gains and gross job losses in manufacturing



NOTE: Shaded area represents recession from March 2001–November 2001 as defined by National Bureau of Economic Research (NBER). Data presented are for the third month of each quarter.