

571 businesses with 11,400 workers were located in flood areas.

👉 222 businesses employing 2,000 workers were identified as being in FEMA moderate damage areas, while 19 businesses with 80 workers were identified as being in FEMA limited damage areas. These businesses were generally further inland, although several were located further southwest along the Texas Coast from Galveston.

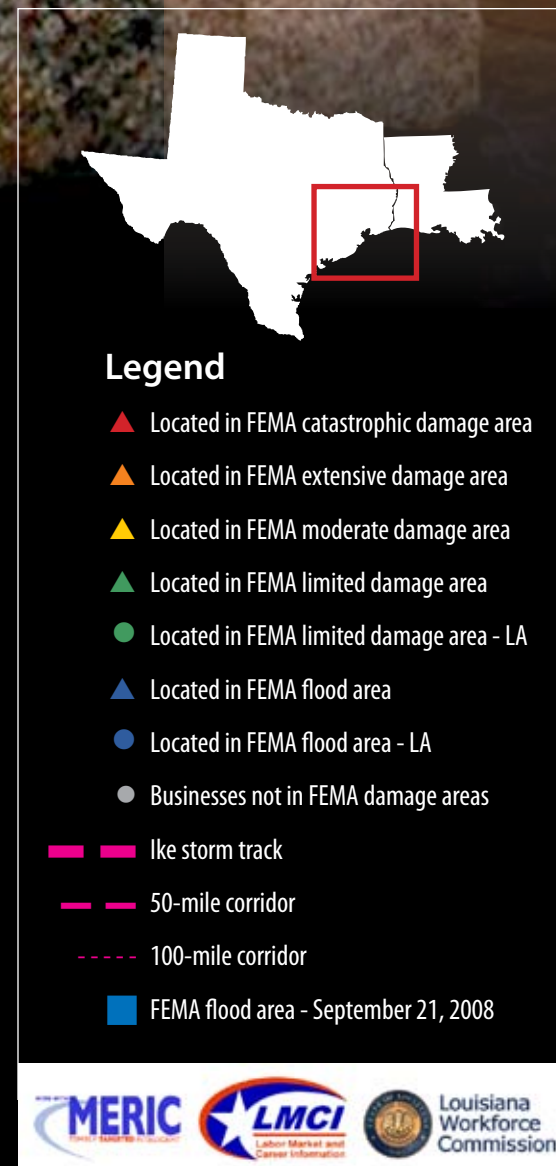
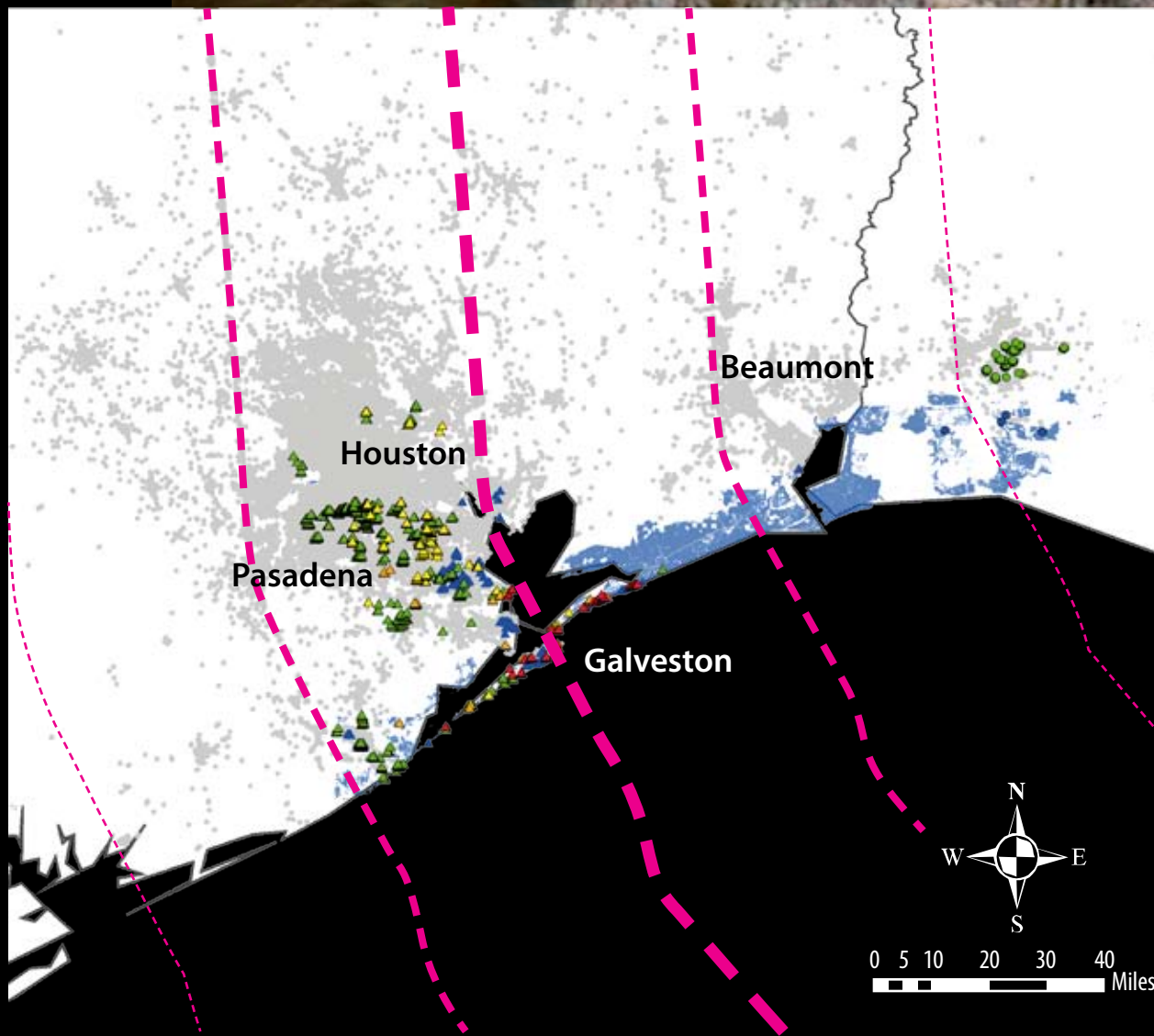
👉 The 46 businesses identified as being in FEMA catastrophic damage areas employed 500 workers, while the 21 businesses identified as being in FEMA extensive damage areas employed 300 workers. These businesses were primarily situated along coastal stretches of Texas.

Information for Hurricane Ike damages was provided by the Quarterly Census of Employment and Wages (QCEW) program, developed through a cooperative program between the States of Texas and Louisiana, and the U.S. Bureau of Labor Statistics. QCEW data are from 2008, first quarter, and do not include businesses for which accurate address information was not available.



FIGURE **24**

Hurricane Ike: damage to businesses in the Galveston, Texas area



NOTE: Storm track, floodwaters, and damage levels downloaded from FEMA on October 1, 2008.