

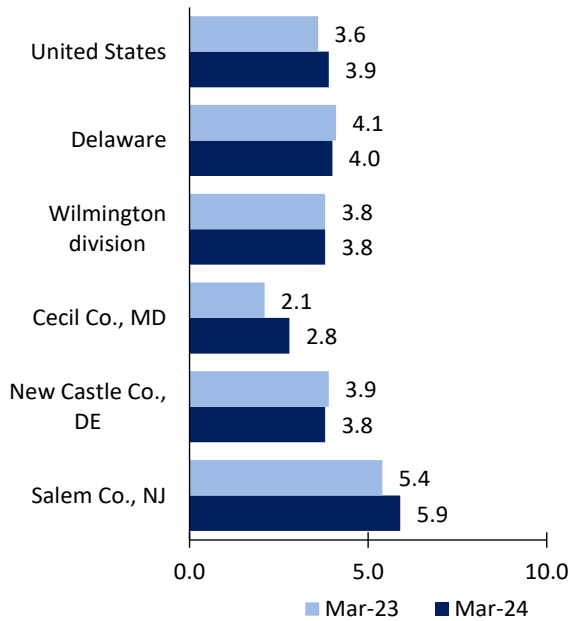
Wilmington division Economic Summary

Updated May 03, 2024

This summary presents a sampling of economic information for the area; supplemental data are provided for regions and the nation. Subjects include **unemployment, employment, wages, prices, spending, and benefits**. All data are not seasonally adjusted and some may be subject to revision. Area definitions may differ by subject. For more area summaries and geographic definitions, see www.bls.gov/regions/economic-summaries.htm.

Unemployment rates for the nation and selected areas

Unemployment rates

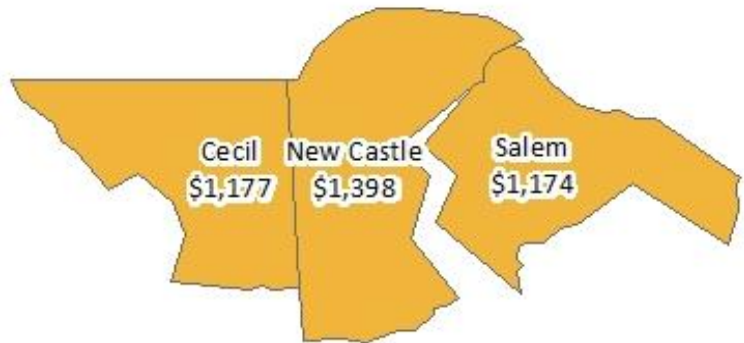


Source: U.S. BLS, Local Area Unemployment Statistics.

Average weekly wages for all industries by county

Wilmington division, third quarter 2023

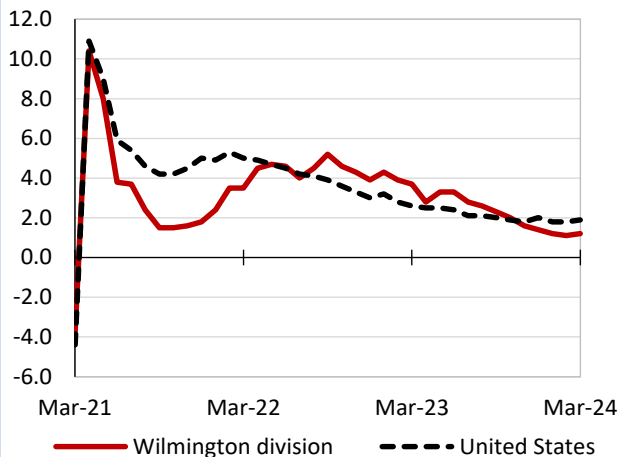
(U.S. = \$1,334; Area = \$1,384)



Source: U.S. BLS, Quarterly Census of Employment and Wages.

Over-the-year changes in employment on nonfarm payrolls and employment by major industry sector

12-month percent changes in employment



Source: U.S. BLS, Current Employment Statistics.

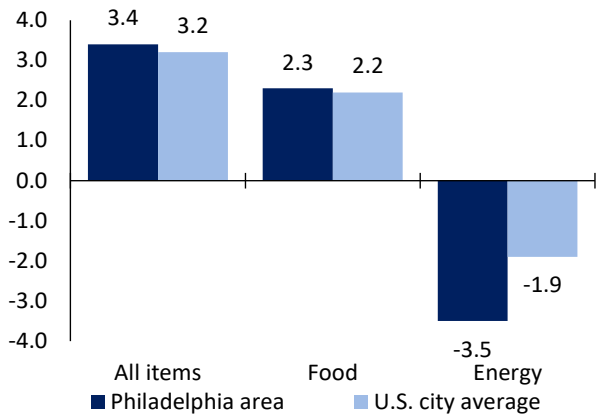
Wilmington division employment (number in thousands)	Mar. 2024	Change from Mar. 2023 to Mar. 2024	
		Number	Percent
Total nonfarm	379.5	4.6	1.2
Mining, logging, and construction	17.3	-0.3	-1.7
Manufacturing	18.0	0.2	1.1
Trade, transportation, and utilities	75.1	-2.0	-2.6
Information	2.6	-0.1	-3.7
Financial activities	45.2	0.1	0.2
Professional and business services	51.2	0.3	0.6
Education and health services	66.4	2.6	4.1
Leisure and hospitality	34.3	1.1	3.3
Other services	14.0	-0.1	-0.7
Government	55.4	2.8	5.3

Source: U.S. BLS, Current Employment Statistics.



Over-the-year change in the prices paid by urban consumers for selected categories

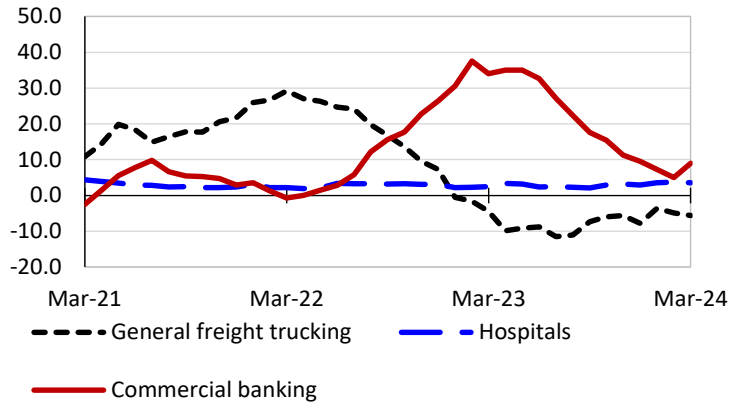
12-month percent change in CPI-U, February 2024



Source: U.S. BLS, Consumer Price Index.

Over-the-year changes in the selling prices received by producers for selected industries nationwide

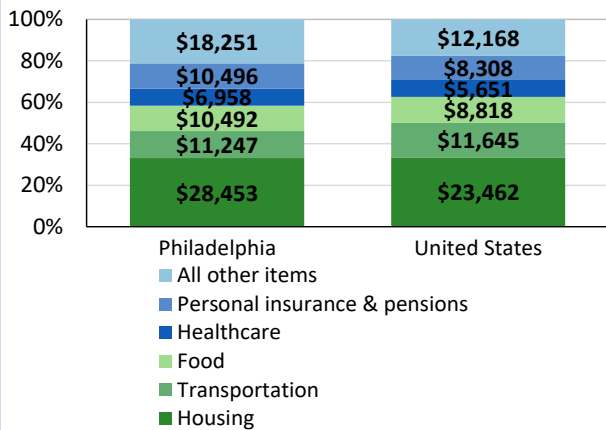
12-month percent changes in PPI



Source: U.S. BLS, Producer Price Index.

Average annual spending and percent distribution for selected categories

Average annual expenditures, United States and Philadelphia, 2021-22



Source: U.S. BLS, Consumer Expenditure Survey.

Average hourly wages for selected occupations

Occupation	Philadelphia area	United States
All occupations	\$32.64	\$31.48
Financial managers	85.22	84.05
Management analysts	51.66	55.54
Computer systems analysts	51.14	53.27
Accountants and auditors	45.05	43.65
Chemical technicians	29.68	29.29
Retail salespersons	17.46	17.64

Source: U.S. BLS, Occupational Employment and Wage Statistics, May 2023.

Employer costs per hour worked for wages and selected employee benefits by geographic division

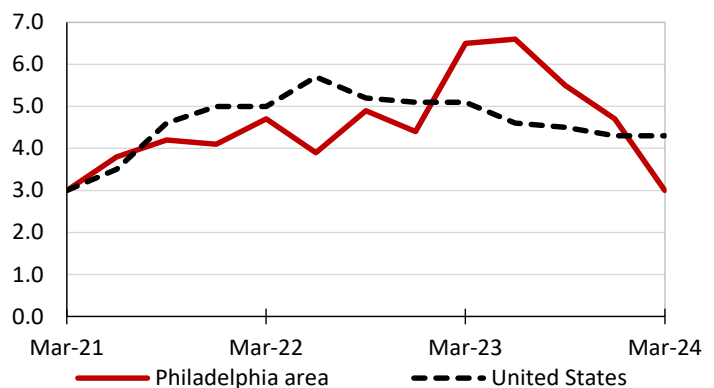
Private industry, December 2023	Middle Atlantic	United States
Total compensation	\$52.53	\$43.11
Wages and salaries	36.44	30.33
Total benefits	16.09	12.77
Paid leave	4.34	3.26
Vacation	2.19	1.67
Supplemental pay	1.79	1.71
Insurance	3.94	3.14
Retirement and savings	2.16	1.50
Legally required benefits	3.86	3.17

(1) The states that compose the Middle Atlantic census division are: NJ, NY, and PA.

Source: U.S. BLS, Employer Costs for Employee Compensation.

Over-the-year changes in wages and salaries

12-month percent changes in ECI



Source: U.S. BLS, Employment Cost Index.

