

**Transmission of this material is embargoed until
8:30 a.m. (EDT) Tuesday, August 11, 2009**

USDL-09-0933

Technical information: (202) 691-5606 • dprweb@bls.gov • www.bls.gov/lpc
Media contact: (202) 691-5902 • PressOffice@bls.gov

This release was reissued on the afternoon of Tuesday, August 11, 2009, to correct information on compensation per hour, real compensation per hour, unit labor costs, and unit non-labor payments in Tables 1 through 5 and Appendix tables 1 and 2. In the tables, all index levels for these data series were corrected; as a result, percent changes derived from the corrected index levels were changed slightly in a few cases. No other portions of the news release were affected.

PRODUCTIVITY AND COSTS Second Quarter 2009, Preliminary

The Bureau of Labor Statistics of the U.S. Department of Labor today reported preliminary productivity data—as measured by output per hour of all persons—for the second quarter of 2009. The seasonally adjusted annual rates of productivity change in the second quarter were:

6.3 percent in the business sector and
6.4 percent in the nonfarm business sector.

Productivity gains in both sectors were the largest since the third quarter of 2003, and were due to hours worked declining faster than output.

In manufacturing, the preliminary productivity changes in the second quarter were:

5.3 percent in manufacturing,
3.9 percent in durable goods manufacturing, and
2.0 percent in nondurable goods manufacturing.

The increases in productivity in all manufacturing sectors were the result of hours falling faster than output. Output and hours in manufacturing, which includes about 11 percent of U.S. business-sector employment, tend to vary more from quarter to quarter than data for the aggregate business and nonfarm business sectors. Second-quarter measures are summarized in table A and appear in detail in tables 1 through 5.

Data in this release reflect the comprehensive revision to the National Income and Product Accounts (NIPA) released by the Bureau of Economic Analysis of the U.S. Department of Commerce on July 31. See Revised Measures, page 4.

Table A. Productivity and costs: Preliminary second-quarter 2009 measures (Seasonally adjusted annual rates)						
Sector	Productivity	Output	Hours	Hourly compensation	Real hourly compensation	Unit labor costs
Percent change from preceding quarter						
Business	6.3	-1.8	-7.5	0.1	-1.2	-5.8
Nonfarm business	6.4	-1.7	-7.6	0.2	-1.1	-5.8
Manufacturing	5.3	-9.9	-14.4	5.8	4.4	0.5
Durable	3.9	-16.5	-19.6	8.7	7.3	4.7
Nondurable	2.0	-3.4	-5.3	2.0	0.7	0.0
Percent change from same quarter a year ago						
Business	1.9	-5.4	-7.1	1.1	2.1	-0.7
Nonfarm business	1.8	-5.6	-7.3	1.3	2.2	-0.6
Manufacturing	-1.3	-15.0	-13.9	6.0	7.0	7.4
Durable	-5.0	-21.1	-16.9	7.1	8.1	12.7
Nondurable	-0.2	-8.9	-8.6	4.9	5.9	5.1

The data sources and methods used in the preparation of the manufacturing series differ from those used in preparing the business and nonfarm business series, and these measures are not directly comparable. Output measures for business and nonfarm business are based on measures of gross domestic product prepared by the Bureau of Economic Analysis of the U.S. Department of Commerce. Quarterly output measures for manufacturing reflect indexes of industrial production independently prepared by the Board of Governors of the Federal Reserve System. See Technical Notes for further information on data sources (page 9).

Business

Business sector output per hour increased 6.3 percent from the first quarter to the second quarter of 2009, as output decreased 1.8 percent and hours of all persons engaged in the sector—employees, proprietors, and unpaid family workers—fell 7.5 percent (seasonally adjusted annual rates). The productivity increase was the largest since the third quarter of 2003, when output per hour increased 8.4 percent. From the second quarter of 2008 to the second quarter of 2009 productivity grew 1.9 percent in the business sector, as output fell 5.4 percent and hours fell 7.1 percent (tables A and 1). Business sector productivity had grown at an average annual rate of 2.6 percent from 2000 through 2008.

Hourly compensation edged up 0.1 percent in the second quarter of 2009 after falling 2.5 percent in the first quarter (seasonally adjusted annual rates). Hourly compensation increased 1.1 percent over the last four quarters. This measure of compensation includes accrued wages and salaries, supplements, employer contributions to employee benefit plans, and taxes. Real hourly compensation, which takes into account changes in consumer prices,

fell 1.2 percent during the second quarter of 2009 as consumer prices increased 1.3 percent (seasonally adjusted annual rates).

The change in unit labor costs approximates the change in hourly compensation less the change in productivity. Unit labor costs decreased at an annual rate of 5.8 percent during the second quarter of 2009. The implicit price deflator for the business sector, which reflects changes in unit labor costs and unit nonlabor payments, decreased 0.1 percent in the second quarter of 2009 and increased 2.1 percent one quarter earlier.

Nonfarm Business

Productivity increased 6.4 percent in the nonfarm business sector during the second quarter of 2009, reflecting declines of 1.7 percent in output and 7.6 percent in hours (seasonally adjusted annual rates). The productivity gain was the largest since the third quarter of 2003, when productivity grew at a 9.7 percent annual rate. Over the last four quarters nonfarm hours have fallen 7.3 percent and output has declined 5.6 percent, yielding an increase of 1.8 percent in output per hour (chart 1, tables A and 2). Nonfarm business productivity increased at an annual rate of 2.5 percent from 2000 through 2008.

Hourly compensation in the nonfarm business sector increased 0.2 percent in the second quarter of 2009, compared to a decrease of 2.4 percent one quarter earlier. When the 1.3 percent rise in consumer prices was taken into account, real hourly compensation fell 1.1 percent in the second quarter of 2009 (seasonally adjusted annual rates).

Nonfarm business unit labor costs fell 5.8 percent in the second quarter of 2009 due entirely to productivity improvement; hourly compensation increased slightly. These costs declined 0.6 percent over the last four quarters, as a 1.8 percent increase in output per hour was partially offset by a 1.3 percent increase in compensation per hour (chart 2, tables A and 2). The implicit price deflator for nonfarm business output decreased 0.2 percent in the second quarter of 2009 and increased 1.7 percent from the same quarter a year ago.

Chart 1. Output per Hour, Nonfarm Business, all persons, 2004:1-2009:2
Percent change

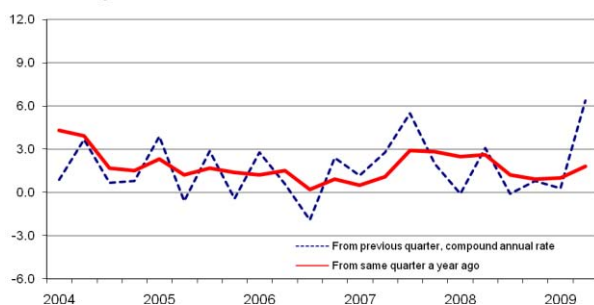
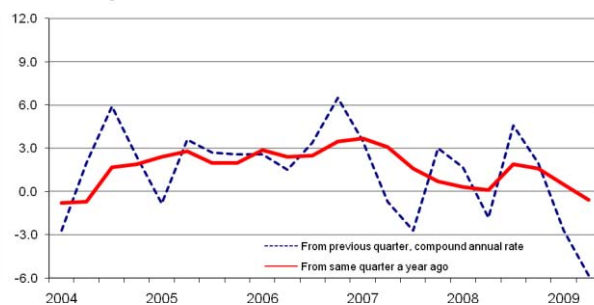


Chart 2. Unit Labor Costs, Nonfarm Business, all persons, 2004:1-2009:2
Percent change



Manufacturing

Manufacturing productivity grew 5.3 percent in the second quarter of 2009, as output fell 9.9 percent and hours worked decreased 14.4 percent (seasonally adjusted annual rates). This was the largest quarterly gain in manufacturing productivity since the first quarter of 2005, when output per hour increased at a 7.3 percent annual rate. Over the last four quarters, manufacturing productivity declined 1.3 percent, as a 15.0 percent drop in output was largely offset by a 13.9 percent decline in hours worked (chart 3, tables A and 3). For

the entire 2000-2008 period manufacturing productivity increased at a 3.3 percent annual rate.

In durable goods industries, productivity rose 3.9 percent in the second quarter of 2009, as output fell 16.5 percent and hours fell faster, -19.6 percent. This was the third consecutive quarter of double-digit declines in output and hours in the durable manufacturing sector. In nondurable goods industries, productivity grew 2.0 percent in the second quarter, reflecting declines in output and hours of 3.4 percent and 5.3 percent, respectively (tables A, 4, and 5).

During the second quarter of 2009, hourly compensation grew 5.8 percent in total manufacturing, 8.7 percent in durable manufacturing and 2.0 percent in nondurable manufacturing (seasonally adjusted annual rates). As revised, manufacturing hourly compensation increased 2.2 percent in the first quarter. When consumer prices were taken into account, real hourly compensation of all manufacturing workers rose 4.4 percent in the second quarter, and 4.6 percent in the first quarter of 2009.

Unit labor costs in manufacturing increased 0.5 percent in the second quarter of 2009; a revised increase of 4.9 percent was reported for the first quarter of 2009. From the second quarter of 2008 to the second quarter of 2009, unit labor costs increased 7.4 percent (chart 4, tables A and 3).

Chart 3. Output per Hour, Manufacturing, all persons, 2004:1-2009:2

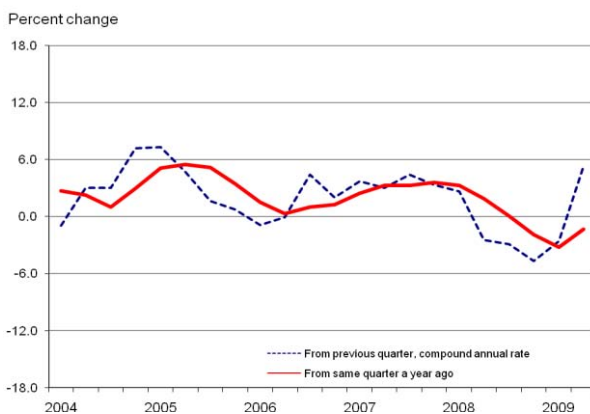
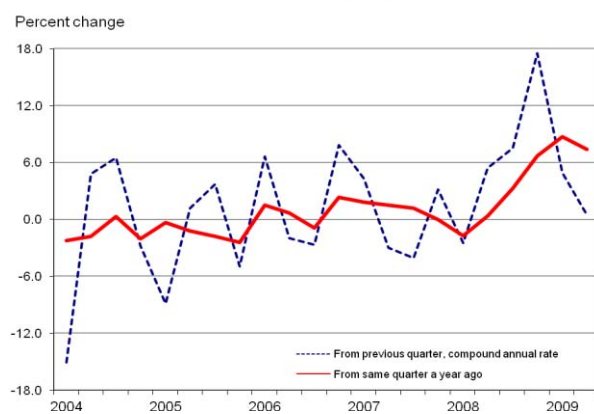


Chart 4. Unit Labor Costs, Manufacturing, all persons, 2004:1-2009:2



Revised measures

In addition to incorporating the most recent information on employment and hours, consumer prices, and manufacturing output in recent months, the measures released today reflect the revised National Income and Product Accounts (NIPA) data released by the Bureau of Economic Analysis, U.S. Department of Commerce, on July 31. NIPA output data for the business, nonfarm business and nonfinancial corporate sectors were revised historically. As a result, measures computed by BLS using output, such as productivity, were revised historically for these sectors. NIPA compensation data used for all sectors were revised back to 1978. BLS measures involving compensation, including hourly compensation, real hourly compensation and unit labor costs, were revised historically for all sectors. The compensation data for manufacturing sectors for first quarter 2001 forward are on a North American Industry Classification System (NAICS) basis; data prior to this are on a Standard Industrial Classification (SIC) System basis. The measures involving compensation therefore contain a break in series at 2001. NIPA data on employment in

government enterprises and the proportion of total compensation paid to employees of corporations and tax-exempt organizations also led to BLS hours revisions back to 1998. Revised quarterly and annual series for recent years appear in tables 1-6 and revised annual indexes are displayed in appendix tables 1-3. Full historical annual and quarterly measures can be found on the productivity and costs home page <http://www.bls.gov/lpc/#data>.

Table B presents previous and revised productivity and related measures for the major sectors: business, nonfarm business and manufacturing, for the first quarter of 2009 and for the years 2008 through 2006 (see page 6).

(This space left intentionally blank.)

Table B. Previous and revised productivity and related measures
Percent changes at annual rates

Sector	Productivity	Output	Hours	Hourly compensation	Real hourly compensation	Unit labor costs
First Quarter 2009						
Business:						
Previous.....	1.8	-7.2	-8.8	4.5	7.0	2.7
Revised.....	0.2	-8.7	-8.9	-2.5	-0.1	-2.7
Nonfarm business:						
Previous.....	1.6	-7.6	-9.0	4.6	7.1	3.0
Revised.....	0.3	-8.8	-9.0	-2.4	-0.1	-2.7
Manufacturing:						
Previous.....	-2.7	-21.7	-19.5	13.4	16.1	16.6
Revised.....	-2.6	-21.8	-19.8	2.2	4.6	4.9
Annual average 2008						
Business:						
Previous	2.7	0.8	-1.9	3.6	-0.2	0.9
Revised	1.9	0.0	-1.9	2.7	-1.1	0.8
Nonfarm business:						
Previous	2.8	0.8	-1.9	3.7	-0.2	0.9
Revised	1.8	-0.1	-1.9	2.8	-1.0	1.0
Manufacturing:						
Previous	0.9	-3.1	-3.9	4.1	0.3	3.2
Revised	0.8	-3.1	-3.9	3.0	-0.9	2.1
Annual average 2007						
Business:						
Previous	1.6	2.0	0.5	4.2	1.3	2.6
Revised	1.8	2.2	0.4	4.2	1.3	2.4
Nonfarm business:						
Previous	1.4	2.0	0.5	4.1	1.3	2.7
Revised	1.8	2.3	0.5	4.2	1.3	2.3
Manufacturing:						
Previous	3.2	1.3	-1.8	3.6	0.7	0.4
Revised	3.2	1.3	-1.8	4.3	1.4	1.1
Annual average 2006						
Business:						
Previous	0.9	3.0	2.1	3.8	0.5	2.9
Revised	1.0	3.1	2.1	3.8	0.5	2.8
Nonfarm business:						
Previous	0.9	3.2	2.2	3.8	0.5	2.8
Revised	0.9	3.1	2.2	3.8	0.5	2.8
Manufacturing:						
Previous	1.0	1.8	0.8	4.1	0.8	3.0
Revised	1.0	1.8	0.8	2.0	-1.3	0.9

In the first quarter of 2009, for the business and nonfarm business sectors, output was revised down and hours were virtually the same, resulting in downward revisions to productivity. Hourly compensation was revised down substantially in both sectors, leading to large downward revisions to unit labor costs despite the downward revision to productivity.

In the manufacturing sector, productivity declined slightly less than previously reported in the first quarter of 2009, and the full effect of a large downward revision to hourly compensation is seen in a corresponding downward revision to unit labor costs.

For the year 2008, output was revised down in the business and nonfarm business sectors while hours were not revised, resulting in downward revisions to productivity. Similar downward revisions to hourly compensation in these sectors offset the productivity revisions, leaving unit labor costs little changed. In manufacturing, productivity was little changed while hourly compensation and unit labor costs were revised down 1.1 percentage points.

For 2007, output and productivity for the business and nonfarm business sectors were revised up, therefore unit labor costs were revised down. In manufacturing, hourly compensation and unit labor costs were revised up in 2007, and in 2006 these same measures were revised down.

Revised Measures: Nonfinancial Corporations

All measures for nonfinancial corporations were revised historically due to incorporation of the NIPA revision. Output, based on the income side of the NIPA for nonfinancial corporations, was revised down in the first quarter, leading to a corresponding downward revision to productivity (table C). Unit labor costs were revised down as the magnitude of the downward revision to productivity was less than a downward revision to hourly compensation. Unit profits fell 20.5 percent, rather than 7.2 percent as reported June 4. From the first quarter of 2008 through the first quarter of 2009, productivity increased 0.6 percent (table 6).

Output and productivity also were revised down for the year 2008, to increases of 0.4 percent and 1.9 percent, respectively. Because hourly compensation was revised down about the same, unit labor costs increased at the same 1.1 percent rate reported previously. As revised, productivity increased at an average annual rate of 2.3 percent in the nonfinancial corporate sector from 2000 through 2008.

Table C. Nonfinancial corporations: Previous and revised productivity and cost measures Percent changes at annual rates								
	Productivity	Output	Hours	Hourly compensation	Real hourly compensation	Unit labor costs	Unit profits	Implicit price deflator
First quarter 2009								
Previous.....	-2.1	-12.3	-10.4	6.3	8.8	8.5	-20.5	6.4
Revised.....	-6.0	-15.9	-10.5	-2.5	-0.2	3.7	-7.2	5.3
Annual average 2008								
Previous.....	2.8	1.3	-1.5	3.9	0.0	1.1	-10.4	0.0
Revised.....	1.9	0.4	-1.5	3.0	-0.8	1.1	-16.3	-0.4
Annual average 2007								
Previous.....	0.7	1.4	0.7	4.1	1.2	3.4	-8.8	1.7
Revised.....	1.0	1.7	0.7	3.6	0.8	2.6	-9.9	1.7
Annual average 2006								
Previous.....	1.8	4.1	2.2	3.6	0.3	1.8	12.6	3.1
Revised.....	1.4	3.7	2.3	2.9	-0.4	1.4	11.7	3.1

Next release date

The next release of **Productivity and Costs** is scheduled for **8:30 a.m. EDT, Wednesday, Sept. 2, 2009**. Revised second-quarter measures for business, nonfarm business, and manufacturing will be released at that time, along with preliminary measures for nonfinancial corporations.

Changes in the presentation of the text sections will be incorporated in the next press releases; there will be **no** changes to the format or content of tables 1 through 6. An example of the new press release format can be found at http://www.bls.gov/bls/changes_to_text_sections_of_nrs.htm

TECHNICAL NOTES

Labor Hours: Hours data for the labor productivity and cost measures include hours for all persons working in the sector—wage and salary workers, the self-employed and unpaid family workers. The primary source of hours and employment data is the BLS Current Employment Statistics (CES) program, which provides monthly survey data on the number of jobs held by wage and salary workers in nonfarm establishments. The CES also provides average weekly paid hours of production and nonsupervisory workers in these establishments. Weekly paid hours are adjusted to hours at work using data from the National Compensation Survey (NCS). The BLS Hours at Work survey, conducted for this purpose, was used for earlier years. The Office of Productivity and Technology estimates average weekly hours at work for nonproduction and supervisory workers using information from the Current Population Survey (CPS), the CES, and the NCS.

Data from the CPS are used for farm labor, nonfarm proprietors, and nonfarm unpaid family workers. Estimates of labor input for government enterprises are derived from the CPS, the CES, and the National Income and Product Accounts (NIPA) prepared by the Bureau of Economic Analysis (BEA) of the Department of Commerce.

The CES measures jobs, counting a person who is employed by two or more establishments at each place of employment. In contrast, the CPS features measures of employment that count each person only once and classify each person according to his or her primary job; hours worked at all jobs by that person accrue to his or her primary job. However, the CPS also collects more detailed information on employment and hours worked at primary jobs and all other jobs, separately. The BLS productivity measures use the more detailed information on employment and hours to assign all hours worked to the correct industrial sector and avoid duplicating hours data from the CES.

Output: Business sector output is a chain-type, current-weighted index constructed after excluding from gross domestic product (GDP) the following outputs: general government, nonprofit institutions, and private households (including owner-occupied housing). Corresponding exclusions also are made in labor inputs. Business output accounted for about 78 percent of the value of GDP in 2000. Nonfarm business, which excludes farming, accounted for about 77 percent of GDP in 2000.

Annual indexes for manufacturing and its durable and nondurable goods components are constructed by deflating current-dollar industry value of production data from the U.S. Bureau of the Census with deflators from the BLS. These deflators are based on data from the BLS producer price program and other sources. The industry shipments are aggregated using annual weights, and intrasector transactions are removed. Quarterly manufacturing output measures are based on the index of industrial production prepared monthly by the Board of Governors of the Federal Reserve System, adjusted to be consistent with annual indexes of manufacturing sector output prepared by BLS. Durables include the following 3-digit NAICS industries: wood product manufacturing; nonmetallic mineral product manufacturing; primary metal manufacturing; fabricated metal product manufacturing; machinery manufacturing; computer and electronic product manufacturing; electrical equipment and appliance manufacturing; transportation equipment manufacturing; furniture and related product manufacturing; and miscellaneous manufacturing. Nondurables include: food manufacturing; beverage and tobacco product manufacturing; textile mills; textile product mills; apparel manufacturing; leather and allied product manufacturing; paper manufacturing; printing and related support activities; petroleum and coal products manufacturing; chemical manufacturing; and plastics and rubber products manufacturing.

Nonfinancial corporate output is a chain-type, current-weighted index calculated on the basis of the costs incurred and the incomes earned from production. The output measure excludes the following outputs from GDP: general government; nonprofit institutions; private households; unincorporated business; and those corporations classified as offices of bank holding companies, offices of other holding companies, or offices in the finance and insurance sector. Nonfinancial corporations accounted for about 54 percent of the value of GDP in 2000.

Productivity: These productivity measures describe the relationship between real output and the labor time involved in its production. They show the changes from period to period in the amount of goods and services produced per hour. Although these measures relate output to hours at work of all persons engaged in a sector, they do not measure the specific contribution of labor, capital, or any other factor of production. Rather, they reflect the joint effects of many influences, including changes in technology; capital investment; level of output; utilization of capacity, energy, and materials; the organization of production; managerial skill; and the characteristics and effort of the work force.

Labor Compensation: Estimates of labor compensation by major sector, required for measures of hourly compensation and unit labor costs, are based primarily on employee compensation data from the NIPA, prepared by the BEA. The compensation of employees in general government, nonprofit institutions and private households are subtracted from compensation of domestic employees to derive employee compensation for the business sector. The labor compensation of proprietors cannot be explicitly identified and must be estimated. This is done by assuming that proprietors have the same hourly compensation as employees in the same sector. The quarterly labor productivity and cost measures do not contain estimates of compensation for unpaid family workers.

Unit Labor Costs: The measures of unit labor costs in this release describe the relationship between compensation per hour and productivity, or real output per hour, and can be used as an indicator of inflationary pressure on producers. Increases in hourly compensation increase unit labor costs; labor productivity increases offset compensation increases and lower unit labor costs.

Presentation of the data: The quarterly data in this release are presented in three ways; as index number series where 1992=100, as percent changes from the corresponding quarter of the previous year, and as percent changes from the previous quarter presented at a compound annual rate. Annual data are presented both as index number series and percent changes from the previous year.

The index numbers and rates of change reported in the productivity and costs news release are rounded to one decimal place. All percent changes in this release and on the BLS web site are calculated using index numbers to three decimal places. These index numbers are available at the BLS web site, <http://www.bls.gov/data/home.htm>, or by contacting the BLS Division of Major Sector Productivity. (Telephone 202-691-5606 or email DPRWEB@BLS.GOV)

Information in this release will be made available to sensory-impaired individuals upon request. Voice phone: 202-691-5606; Federal Relay Service number: 1-800-877-8339.

Table 1. Business sector: Productivity, hourly compensation, unit labor costs, and prices, seasonally adjusted

Year and quarter	Output per hour of all persons	Output	Hours of all persons	Compensation per hour (1)	Real compensation per hour (2)	Unit labor costs	Unit non-labor payments (3)	Implicit price deflator (4)	
Indexes 1992=100									
2007	I	r139.0	r168.4	r121.2	r175.2	r122.7	r126.0	r136.7	r130.0
	II	r140.2	r169.8	r121.2	r176.5	r122.4	r125.9	r139.4	r130.9
	III	r142.1	r171.4	r120.6	r177.8	r122.6	r125.1	r141.9	r131.4
	IV	r142.6	r172.3	r120.8	r179.6	r122.1	r125.9	r141.9	r131.9
	ANNUAL	r141.0	r170.5	r120.9	r177.3	r122.4	r125.7	r140.0	r131.0
2008	I	r142.7	r171.7	r120.3	r180.3	r121.2	r126.3	r141.7	r132.1
	II	r143.8	r172.2	r119.8	r181.0	r120.4	r125.9	r143.8	r132.5
	III	r143.9	r170.6	r118.6	r183.0	r119.9	r127.2	r145.4	r134.0
	IV	r144.2	r167.4	r116.1	r184.2	r123.3	r127.7	r143.6	r133.6
	ANNUAL	r143.6	r170.5	r118.7	r182.1	r121.1	r126.8	r143.6	r133.0
2009	I	r144.3	r163.6	r113.4	r183.0	r123.3	r126.9	r146.9	r134.3
	II	146.5	162.9	111.2	183.1	122.9	125.0	149.9	134.3
Percent change from previous quarter at annual rate(5)									
2007	I	r0.9	r0.8	r-0.1	r4.4	r0.6	r3.5	r4.8	4.0
	II	r3.5	r3.5	0.0	r3.1	r-1.1	r-0.4	r8.0	r2.8
	III	r5.5	r3.7	-1.7	r3.0	r0.6	r-2.4	r7.4	r1.4
	IV	r1.6	r2.1	0.5	r4.3	r-1.4	r2.6	r0.2	r1.6
	ANNUAL	r1.8	r2.2	r0.4	4.2	1.3	r2.4	r3.0	r2.6
2008	I	r0.2	r-1.3	-1.5	r1.5	r-3.0	r1.3	r-0.5	r0.6
	II	r3.1	r1.1	-1.9	r1.6	r-2.8	r-1.5	r5.9	r1.4
	III	r0.3	r-3.7	-4.0	r4.5	r-1.6	r4.2	r4.5	r4.3
	IV	r0.8	r-7.2	-8.0	r2.6	r12.0	r1.8	r-4.9	r-1.0
	ANNUAL	r1.9	r0.0	-1.9	r2.7	r-1.1	r0.8	r2.6	r1.5
2009	I	r0.2	r-8.7	r-8.9	r-2.5	r-0.1	r-2.7	r9.5	r2.1
	II	6.3	-1.8	-7.5	0.1	-1.2	-5.8	8.6	-0.1
Percent change from corresponding quarter of previous year									
2007	I	r0.3	r1.5	r1.1	r4.0	r1.6	r3.7	r1.6	r2.9
	II	r1.0	r2.0	r0.9	r4.4	r1.7	r3.3	r1.9	r2.8
	III	r3.0	3.0	r0.0	r4.8	r2.4	r1.7	r3.3	r2.4
	IV	r2.9	r2.5	-0.3	3.7	-0.3	r0.8	r5.1	r2.5
	ANNUAL	r1.8	r2.2	r0.4	4.2	1.3	r2.4	r3.0	r2.6
2008	I	r2.7	r2.0	-0.7	r2.9	r-1.2	r0.2	r3.7	r1.6
	II	r2.6	r1.4	-1.2	r2.6	r-1.7	r0.0	r3.2	r1.2
	III	r1.3	r-0.5	-1.7	r2.9	r-2.2	1.6	r2.5	r2.0
	IV	r1.1	r-2.8	-3.9	r2.5	r1.0	r1.4	r1.2	r1.3
	ANNUAL	r1.9	r0.0	-1.9	r2.7	r-1.1	r0.8	r2.6	r1.5
2009	I	r1.1	r-4.7	-5.7	r1.5	r1.7	r0.4	r3.6	r1.7
	II	1.9	-5.4	-7.1	1.1	2.1	-0.7	4.3	1.3

See footnotes following Table 6.
r=revised

August 11, 2009
Source: Bureau of Labor Statistics

Table 2. Nonfarm business sector: Productivity, hourly compensation, unit labor costs, and prices, seasonally adjusted

Year and quarter	Output per hour of all persons	Output	Hours of all persons	Compensation per hour (1)	Real compensation per hour (2)	Unit labor costs	Unit non-labor payments (3)	Implicit price deflator (4)
Indexes 1992=100								
2007	I	r138.2	r168.8	r122.1	r174.2	r122.1	r126.0	r138.2
	II	r139.2	r170.3	r122.4	r175.1	r121.4	r125.8	r140.9
	III	r141.1	r172.0	r121.9	r176.3	r121.5	r125.0	r143.3
	IV	r141.8	r172.8	r121.9	r178.5	r121.3	r125.9	r143.0
	ANNUAL	r140.1	r171.0	r122.1	r176.0	r121.6	r125.7	r141.4
2008	I	r141.7	r172.0	r121.4	r179.2	r120.5	r126.4	r142.5
	II	r142.8	r172.6	r120.8	r179.8	r119.6	r125.9	r144.9
	III	r142.8	r170.8	r119.6	r181.8	r119.1	r127.3	r146.6
	IV	r143.1	r167.5	r117.0	r183.1	r122.6	r128.0	r145.3
	ANNUAL	r142.6	r170.7	r119.7	r181.0	r120.4	r126.9	r144.8
2009	I	r143.2	r163.7	r114.3	r182.0	r122.6	r127.1	r149.2
	II	145.5	163.0	112.1	182.1	122.2	125.2	152.3
Percent change from previous quarter at annual rate(5)								
2007	I	r1.2	r0.9	r-0.3	r4.7	r0.8	r3.5	r3.9
	II	r2.8	r3.7	0.9	r2.0	r-2.1	r-0.7	r8.1
	III	r5.5	r3.9	-1.5	r2.7	r0.3	r-2.7	r7.0
	IV	r2.0	r1.8	-0.2	r5.0	r-0.7	r3.0	r-0.9
	ANNUAL	r1.8	r2.3	0.5	r4.2	1.3	r2.3	r2.4
2008	I	r-0.1	r-1.7	r-1.6	r1.7	r-2.8	r1.7	r-1.5
	II	r3.1	r1.3	-1.7	r1.3	r-3.0	r-1.8	6.9
	III	r-0.1	r-4.0	-3.9	r4.5	r-1.6	r4.6	r4.7
	IV	r0.8	r-7.6	-8.3	r2.9	r12.3	r2.0	r-3.5
	ANNUAL	r1.8	r-0.1	-1.9	r2.8	r-1.0	r1.0	r2.4
2009	I	r0.3	r-8.8	-9.0	r-2.4	r-0.1	r-2.7	r11.3
	II	6.4	-1.7	-7.6	0.2	-1.1	-5.8	8.6
Percent change from corresponding quarter of previous year								
2007	I	r0.5	r1.5	r0.9	r4.3	r1.8	r3.7	r1.0
	II	r1.1	r2.1	1.1	r4.3	r1.6	r3.1	r1.3
	III	r2.9	r3.2	r0.2	r4.6	r2.2	r1.6	r2.8
	IV	r2.8	r2.6	-0.3	3.6	-0.4	r0.7	r4.5
	ANNUAL	r1.8	r2.3	0.5	r4.2	1.3	r2.3	r2.4
2008	I	r2.5	r1.9	-0.6	r2.9	r-1.3	r0.3	r3.1
	II	r2.6	r1.3	-1.3	r2.7	r-1.5	0.1	r2.8
	III	r1.2	r-0.7	-1.9	r3.1	r-2.0	r1.9	r2.3
	IV	r0.9	r-3.0	-4.0	r2.6	r1.0	r1.6	r1.6
	ANNUAL	r1.8	r-0.1	-1.9	r2.8	r-1.0	r1.0	r2.4
2009	I	r1.0	r-4.8	-5.8	r1.5	r1.7	r0.5	r4.7
	II	1.8	-5.6	-7.3	1.3	2.2	-0.6	5.1

See footnotes following Table 6.
r=revised

August 11, 2009

Source: Bureau of Labor Statistics

Table 3. Manufacturing sector: Productivity, hourly compensation, and unit labor costs, seasonally adjusted

Year and quarter	Output per hour of all persons	Output	Hours of all persons	Compensation per hour (1)	Real compensation per hour (2)	Unit labor costs	
Indexes 1992=100							
2007	I	176.9	148.0	83.7	r156.1	r109.3	r88.2
	II	178.2	149.3	83.8	r156.1	r108.2	r87.6
	III	180.1	150.3	83.4	r156.1	r107.6	r86.7
	IV	181.6	150.4	82.8	r158.6	r107.8	r87.3
	ANNUAL	179.2	149.5	83.4	r156.7	r108.2	r87.4
2008	I	182.8	149.9	82.0	r158.6	r106.6	r86.8
	II	181.6	148.0	81.5	r159.7	r106.2	r87.9
	III	180.3	144.4	80.1	r161.4	r105.7	r89.5
	IV	r178.1	r137.2	77.0	r166.0	r111.2	r93.2
	ANNUAL	r180.7	r144.9	80.2	r161.3	r107.3	r89.3
2009	I	177.0	r129.0	r72.9	r166.9	r112.4	r94.3
	II	179.2	125.7	70.1	169.3	113.7	94.5
Percent change from previous quarter at annual rate(5)							
2007	I	3.7	1.8	-1.9	r8.2	r4.2	r4.3
	II	3.0	3.4	0.4	r0.0	r-4.1	r-3.0
	III	4.4	2.7	-1.6	r0.1	r-2.2	r-4.1
	IV	3.3	0.3	-2.9	r6.5	r0.7	r3.1
	ANNUAL	3.2	1.3	-1.8	r4.3	r1.4	r1.1
2008	I	2.6	-1.2	-3.7	r0.1	r-4.3	r-2.5
	II	-2.5	-5.2	-2.7	r2.8	r-1.6	r5.4
	III	-2.9	-9.3	-6.5	r4.3	r-1.7	r7.5
	IV	r-4.7	r-18.4	-14.4	r12.0	r22.2	r17.5
	ANNUAL	r0.8	-3.1	-3.9	r3.0	r-0.9	r2.1
2009	I	r-2.6	r-21.8	r-19.8	r2.2	r4.6	r4.9
	II	5.3	-9.9	-14.4	5.8	4.4	0.5
Percent change from corresponding quarter of previous year							
2007	I	2.5	0.4	-2.0	r4.3	r1.9	r1.8
	II	3.3	1.3	-2.0	r4.9	r2.1	r1.5
	III	3.3	1.6	-1.6	r4.5	r2.1	r1.2
	IV	3.6	2.0	-1.5	r3.6	r-0.4	r0.0
	ANNUAL	3.2	1.3	-1.8	r4.3	r1.4	r1.1
2008	I	3.3	1.3	-2.0	r1.6	r-2.5	r-1.7
	II	1.9	-0.9	-2.7	r2.3	r-1.9	r0.4
	III	0.1	-3.9	-4.0	r3.4	r-1.8	r3.3
	IV	-1.9	-8.7	-7.0	r4.7	r3.1	r6.7
	ANNUAL	r0.8	-3.1	-3.9	r3.0	r-0.9	r2.1
2009	I	-3.2	-13.9	r-11.1	r5.3	r5.5	r8.7
	II	-1.3	-15.0	-13.9	6.0	7.0	7.4

See footnotes following Table 6.
r=revised

August 11, 2009
Source: Bureau of Labor Statistics

Table 4. Durable manufacturing sector: Productivity, hourly compensation, and unit labor costs, seasonally adjusted

Year and quarter	Output per hour of all persons	Output	Hours of all persons	Compensation per hour (1)	Real compensation per hour (2)	Unit labor costs	
Indexes 1992=100							
2007	I	204.1	180.4	88.4	r159.8	r112.0	r78.3
	II	206.9	183.0	88.5	r159.1	r110.3	r76.9
	III	209.7	185.0	88.2	r159.3	r109.8	r76.0
	IV	212.9	185.7	87.2	r161.8	r110.0	r76.0
	ANNUAL	208.4	183.5	88.1	r160.0	r110.5	r76.8
2008	I	213.6	185.3	86.8	r161.2	r108.4	r75.5
	II	211.1	181.8	86.1	r162.8	r108.3	r77.1
	III	212.2	178.1	83.9	r165.2	r108.2	r77.8
	IV	r204.3	r165.1	80.8	r169.4	r113.4	r82.9
	ANNUAL	r210.4	r177.6	84.4	r164.5	r109.4	r78.2
2009	I	r198.7	r150.1	r75.6	r170.7	r115.0	r85.9
	II	200.6	143.5	71.5	174.4	117.0	86.9
Percent change from previous quarter at annual rate(5)							
2007	I	4.2	1.2	-2.9	r10.0	r6.0	r5.6
	II	5.6	6.0	0.4	r-1.7	r-5.7	r-6.9
	III	5.6	4.4	-1.1	r0.4	r-1.9	r-4.9
	IV	6.3	1.4	-4.5	6.3	0.5	r0.1
	ANNUAL	4.0	1.8	-2.1	r4.7	r1.8	r0.7
2008	I	1.2	-0.9	-2.0	r-1.4	r-5.7	r-2.5
	II	-4.6	-7.3	-2.9	r4.1	r-0.4	r9.1
	III	2.2	-7.9	-9.9	r6.0	r-0.2	r3.6
	IV	r-14.2	-26.2	-14.1	10.5	r20.6	r28.8
	ANNUAL	0.9	-3.3	-4.2	r2.8	r-1.0	r1.9
2009	I	r-10.5	r-31.5	r-23.5	r3.3	r5.7	r15.4
	II	3.9	-16.5	-19.6	8.7	7.3	4.7
Percent change from corresponding quarter of previous year							
2007	I	2.6	0.3	-2.3	r4.9	r2.4	r2.2
	II	4.1	1.4	-2.6	r5.3	r2.6	r1.2
	III	4.0	2.3	-1.6	r5.0	r2.7	r1.0
	IV	5.4	3.2	-2.1	r3.7	r-0.3	r-1.6
	ANNUAL	4.0	1.8	-2.1	r4.7	r1.8	r0.7
2008	I	4.6	2.7	-1.8	r0.9	r-3.2	r-3.6
	II	2.0	-0.7	-2.6	r2.3	r-1.9	r0.3
	III	1.2	-3.7	-4.9	r3.7	r-1.5	r2.5
	IV	r-4.1	-11.1	-7.3	r4.7	r3.1	r9.1
	ANNUAL	0.9	-3.3	-4.2	r2.8	r-1.0	r1.9
2009	I	-6.9	r-19.0	r-12.9	r5.9	r6.1	r13.8
	II	-5.0	-21.1	-16.9	7.1	8.1	12.7

See footnotes following Table 6.
r=revised

August 11, 2009
Source: Bureau of Labor Statistics

Table 5. Nondurable manufacturing sector: Productivity, hourly compensation, and unit labor costs, seasonally adjusted

Year and quarter	Output per hour of all persons	Output	Hours of all persons	Compensation per hour (1)	Real compensation per hour (2)	Unit labor costs	
Indexes 1992=100							
2007	I	151.3	115.9	76.6	r148.4	r104.0	r98.1
	II	151.4	116.0	76.7	r149.6	r103.8	r98.9
	III	152.6	116.3	76.2	r149.4	r103.0	r97.9
	IV	152.3	116.0	76.2	r152.0	r103.3	r99.8
	ANNUAL	151.9	116.1	76.4	r149.9	r103.5	r98.7
2008	I	154.3	115.6	74.9	r153.0	r102.8	r99.1
	II	154.2	114.8	74.4	r153.1	r101.8	r99.3
	III	150.1	111.6	74.4	r153.9	r100.8	r102.5
	IV	r152.3	r108.7	71.4	r159.3	r106.6	r104.6
	ANNUAL	r152.7	r112.7	73.8	r154.8	r102.9	r101.3
2009	I	r153.1	r105.5	r69.0	r159.7	r107.6	r104.4
	II	153.8	104.6	68.0	160.6	107.8	104.4
Percent change from previous quarter at annual rate(5)							
2007	I	2.4	2.4	0.0	r4.9	r1.1	r2.4
	II	0.3	0.7	0.4	r3.3	r-0.9	r3.0
	III	3.4	0.8	-2.5	r-0.6	r-2.9	r-3.9
	IV	-0.9	-0.9	0.0	r7.1	r1.3	r8.0
	ANNUAL	2.0	0.9	-1.1	r3.6	r0.8	r1.6
2008	I	5.4	-1.4	-6.5	r2.6	r-1.9	r-2.7
	II	-0.4	-2.8	-2.5	r0.2	r-4.1	r0.6
	III	-10.2	-10.6	-0.5	r2.1	r-3.8	r13.7
	IV	r6.0	r-9.9	-15.0	r14.7	r25.2	r8.2
	ANNUAL	0.6	-2.9	-3.4	r3.3	r-0.6	r2.7
2009	I	r2.0	r-11.3	r-13.0	r1.2	r3.6	r-0.7
	II	2.0	-3.4	-5.3	2.0	0.7	0.0
Percent change from corresponding quarter of previous year							
2007	I	2.3	0.7	-1.6	r3.4	r0.9	r1.1
	II	2.1	1.2	-0.9	r4.1	r1.4	r2.0
	III	2.5	0.9	-1.6	r3.4	r1.1	r0.9
	IV	1.3	0.8	-0.5	r3.7	r-0.4	r2.3
	ANNUAL	2.0	0.9	-1.1	r3.6	r0.8	r1.6
2008	I	2.0	-0.2	-2.2	r3.1	r-1.1	r1.0
	II	1.9	-1.1	-2.9	r2.3	r-1.9	r0.4
	III	-1.7	-4.0	-2.4	r3.0	r-2.1	r4.7
	IV	0.0	r-6.3	-6.3	r4.8	r3.2	r4.8
	ANNUAL	0.6	-2.9	-3.4	r3.3	r-0.6	r2.7
2009	I	-0.8	r-8.7	-8.0	r4.4	r4.6	r5.3
	II	-0.2	-8.9	-8.6	4.9	5.9	5.1

See footnotes following Table 6.
r=revised

August 11, 2009
Source: Bureau of Labor Statistics

Table 6. Nonfinancial corporate sector: Productivity, hourly compensation, unit labor costs, unit profits, and prices, seasonally adjusted

Year and quarter	Output per all-employee hour	Output	Employee hours	Hourly compensation (1)	Real hourly compensation (2)	Unit labor costs	Unit non-labor costs (6)	Total unit costs (7)	Unit profits (8)	Implicit price deflator (4)	
Indexes 1992=100											
2007	I	r143.5	r175.1	r122.0	r164.2	r115.0	r114.4	r123.1	r116.8	r171.2	r121.8
	II	r144.5	r176.5	r122.1	r165.2	r114.6	r114.4	r124.9	r117.2	r171.8	r122.2
	III	r144.1	r175.8	r122.0	r166.2	r114.5	r115.3	r127.4	r118.6	r155.6	r122.0
	IV	r145.9	r178.5	r122.3	r168.3	r114.4	r115.3	r127.9	r118.7	r149.9	r121.6
	ANNUAL	r144.5	r176.5	r122.1	r166.0	r114.6	r114.9	r125.8	r117.8	r162.1	r121.9
2008	I	r145.0	r176.9	r122.0	r168.6	r113.4	r116.3	r129.1	r119.8	r133.0	r121.0
	II	r147.4	r178.8	r121.3	r169.7	r112.9	r115.1	r129.2	r118.9	r134.7	r120.4
	III	r148.6	r178.4	r120.1	r171.8	r112.5	r115.6	r129.8	r119.4	r145.3	r121.8
	IV	r148.0	r174.6	r117.9	r173.7	r116.3	r117.3	r134.1	r121.8	r129.5	r122.5
	ANNUAL	r147.2	r177.2	r120.3	r170.9	r113.7	r116.1	r130.5	r120.0	r135.7	r121.4
2009	I	r145.8	r167.2	r114.7	r172.6	r116.2	r118.4	r138.6	r123.8	r127.1	r124.1
Percent change from previous quarter at annual rate(5)											
2007	I	r-0.2	r0.2	0.4	r4.3	r0.4	r4.5	r7.5	r5.3	r-10.2	r3.2
	II	r2.8	r3.2	0.4	r2.5	r-1.6	r-0.3	r5.8	r1.4	r1.5	r1.4
	III	r-1.1	r-1.5	-0.4	r2.3	r-0.1	r3.4	r8.2	r4.8	r-32.7	r-0.7
	IV	r5.3	r6.2	0.9	r5.3	r-0.4	r0.0	r1.5	r0.5	r-13.8	r-1.3
	ANNUAL	r1.0	r1.7	0.7	r3.6	r0.8	r2.6	r5.8	r3.5	r-9.9	1.7
2008	I	r-2.7	r-3.6	r-1.0	r0.7	r-3.7	r3.5	r3.9	r3.6	r-38.0	r-1.9
	II	r6.9	r4.4	r-2.4	r2.6	r-1.8	r-4.0	r0.5	r-2.7	r5.0	r-2.0
	III	r3.2	r-0.8	-3.9	r4.9	r-1.2	r1.6	r1.8	r1.6	r35.5	r4.8
	IV	r-1.4	r-8.3	-6.9	r4.6	r14.1	r6.1	r13.9	r8.3	r-37.0	r2.4
	ANNUAL	r1.9	r0.4	-1.5	r3.0	r-0.8	1.1	r3.7	r1.8	r-16.3	r-0.4
2009	I	r-6.0	r-15.9	r-10.5	r-2.5	r-0.2	r3.7	r14.2	r6.7	r-7.2	r5.3
Percent change from corresponding quarter of previous year											
2007	I	r0.3	r1.4	1.1	r3.3	r0.8	r2.9	r5.5	r3.7	r-3.0	r2.8
	II	r1.7	r2.6	0.9	r3.7	r1.0	r2.0	r5.0	r2.8	r-2.2	r2.1
	III	r0.5	r0.9	0.4	r4.0	r1.6	r3.5	r7.0	r4.5	r-18.7	r1.1
	IV	r1.6	r2.0	0.3	r3.6	r-0.4	r1.9	r5.7	r3.0	r-14.7	r0.6
	ANNUAL	r1.0	r1.7	0.7	r3.6	r0.8	r2.6	r5.8	r3.5	r-9.9	1.7
2008	I	r1.0	r1.0	0.0	r2.7	r-1.5	r1.7	r4.8	r2.6	r-22.3	r-0.6
	II	r2.0	r1.3	-0.7	r2.7	r-1.5	r0.7	r3.5	r1.5	r-21.6	r-1.5
	III	r3.1	r1.5	-1.6	r3.4	r-1.8	r0.2	r1.9	r0.7	r-6.6	r-0.1
	IV	r1.4	r-2.2	r-3.6	r3.2	r1.6	1.7	r4.9	r2.6	r-13.6	r0.8
	ANNUAL	r1.9	r0.4	-1.5	r3.0	r-0.8	1.1	r3.7	r1.8	r-16.3	r-0.4
2009	I	r0.6	r-5.5	r-6.0	r2.3	r2.5	r1.8	r7.4	r3.4	r-4.5	r2.6

See footnotes following Table 6.
r=revised

August 11, 2009
Source: Bureau of Labor Statistics

SOURCES: Output data are from the Bureau of Economic Analysis and the Census Bureau of the U.S. Department of Commerce; the Bureau of Labor Statistics, U.S. Department of Labor; and the Federal Reserve Board. Compensation and hours data are from the Bureau of Labor Statistics and the Bureau of Economic Analysis.

RELIABILITY: Productivity and cost measures are regularly revised as more complete information becomes available. The measures are first published within 40 days of the close of the reference period; revisions appear 30 days later, and second revisions after an additional 60 days. In the business sector, the third publication (second revision) of a quarterly index of output per hour of all persons has differed from the initial value by between -1.5 and +1.4 index points approximately 95 percent of the time. This interval is based on the performance of this measure between the fourth quarter of 1995 and the first quarter of 2009.

Footnotes, Tables 1-6

(1) Wages and salaries of employees plus employers' contributions for social insurance and private benefit plans. Except for nonfinancial corporations, where there are no self-employed, data also include an estimate of wages, salaries, and supplemental payments for the self-employed.

(2) The change for recent quarters is based on the Consumer Price Index for all urban consumers (CPI-U). The trend from 1978-2008 is based on the Consumer Price Index research series (CPI-U-RS).

(3) Unit nonlabor payments include profits, consumption of fixed capital, taxes on production and imports less subsidies, net interest and miscellaneous payments, business current transfer payments, rental income of persons, and the current surplus of government enterprises.

(4) Current dollar output divided by the output index.

(5) Quarterly changes: Percent change compounded at annual rate is calculated using index numbers to three decimal places. Indexes published in the news release are rounded to one decimal place for convenience. Annual changes: Percent change is calculated using annual average indexes to three decimal places.

(6) Unit nonlabor costs include consumption of fixed capital, taxes on production and imports less subsidies, net interest and miscellaneous payments, and business current transfer payments.

(7) Total unit costs are the sum of unit labor and nonlabor costs.

(8) Unit profits include corporate profits before tax with inventory valuation and capital consumption adjustments.

Appendix table 1. Business sector: Productivity, hourly compensation, unit labor costs, and prices
Indexes 1992=100

Year	Output per hour of all persons	Output	Hours of all persons	Compensa- tion per hour (1)	Real compensa- tion per hour (2)	Unit labor costs	Unit non- labor pay- ments (3)	Implicit price deflator (4)
1947	r32.2	r20.4	63.4	r7.0	r41.2	r21.8	r18.5	r20.6
1948	r33.7	r21.5	63.8	r7.6	r41.3	r22.6	r20.6	r21.9
1949	r34.5	r21.3	61.8	r7.7	r42.4	r22.4	r20.4	r21.6
1950	r37.4	r23.4	62.6	r8.3	r44.8	r22.1	r21.5	r21.9
1951	r38.5	r24.9	64.6	r9.1	r45.5	r23.5	r23.7	r23.6
1952	r39.6	r25.7	64.8	r9.6	r47.4	r24.3	r23.1	r23.8
1953	r41.1	r26.9	65.6	r10.2	r50.0	r24.9	r22.5	r24.0
1954	r41.9	r26.6	63.4	r10.6	r51.3	r25.2	r22.4	r24.1
1955	r43.7	r28.7	65.8	r10.8	r52.8	r24.8	r23.9	r24.5
1956	r43.8	r29.2	66.8	r11.5	r55.4	r26.4	r23.4	r25.3
1957	r45.1	r29.7	65.8	r12.3	r57.1	r27.2	r24.1	r26.1
1958	r46.4	r29.2	62.9	r12.8	r58.0	r27.6	r24.6	r26.5
1959	r48.2	r31.6	65.5	r13.4	r60.0	r27.7	r25.1	r26.7
1960	r49.1	r32.2	65.6	r13.9	r61.4	r28.4	r24.7	r27.0
1961	r50.8	r32.8	64.6	r14.5	r63.2	r28.5	r25.1	r27.2
1962	r53.1	r34.9	65.8	r15.1	r65.3	r28.4	r25.9	r27.5
1963	r55.2	r36.5	66.2	r15.6	r66.8	r28.3	r26.5	r27.7
1964	r57.0	r38.9	68.1	r16.2	r68.4	r28.5	r27.2	r28.0
1965	r59.1	r41.6	70.4	r16.8	r69.8	r28.5	r28.3	r28.4
1966	r61.5	r44.4	72.3	r18.0	r72.4	r29.2	r28.9	r29.1
1967	r62.8	r45.3	72.1	r19.0	r74.3	r30.2	r29.4	r29.9
1968	r65.0	r47.5	73.2	r20.5	r77.0	r31.6	r30.3	r31.1
1969	r65.3	r49.0	75.0	r22.0	r78.1	r33.6	r30.7	r32.5
1970	r66.6	r49.0	73.5	r23.6	r79.6	r35.5	r31.3	r33.9
1971	r69.3	r50.8	73.3	r25.1	r81.0	r36.2	r33.9	r35.4
1972	r71.6	r54.1	75.6	r26.7	r83.5	r37.3	r35.4	r36.6
1973	r73.7	r57.9	78.5	r29.0	r85.2	r39.3	r37.3	r38.5
1974	r72.5	r57.0	78.7	r31.8	r84.1	r43.8	r39.7	r42.3
1975	r75.1	r56.5	75.3	r35.0	r85.0	r46.6	r46.0	r46.4
1976	r77.5	r60.2	77.8	r38.0	r87.3	r49.1	r48.4	r48.8
1977	r78.8	r63.6	80.7	r41.1	r88.5	r52.1	r51.2	r51.8
1978	r79.6	r67.6	84.9	r44.6	r89.9	r56.0	r54.5	r55.4
1979	r79.6	r69.8	87.7	r48.9	r89.9	r61.4	r58.0	r60.1
1980	r79.4	r69.1	87.0	r54.1	r89.5	r68.1	r61.2	r65.6
1981	r81.1	r71.0	87.6	r59.2	r89.5	r73.1	r69.1	r71.6
1982	r80.4	r68.8	85.6	r63.5	r90.5	r79.0	r70.1	r75.7
1983	r83.3	r72.5	87.1	r66.1	r90.3	r79.4	r76.4	r78.3
1984	r85.5	r78.8	92.2	r68.9	r90.5	r80.6	r80.4	r80.5
1985	r87.5	r82.5	94.3	r72.1	r91.6	r82.5	r82.4	r82.4
1986	r90.0	r85.6	95.1	r75.8	r94.5	r84.3	r82.9	r83.8
1987	r90.3	r88.4	97.9	r78.6	r94.8	r87.1	r83.7	r85.8
1988	r91.6	r92.2	100.6	r82.7	r96.2	r90.3	r85.6	r88.5
1989	r92.6	r95.6	103.3	r84.9	r94.7	r91.7	r91.9	r91.8
1990	r94.5	r97.1	102.7	r90.3	r96.0	r95.6	r94.1	r95.0
1991	r96.0	r96.2	100.2	r95.0	r97.4	r98.9	r96.7	r98.1
1992	100.0	100.0	100.0	100.0	100.0	100.0	100.0	100.0
1993	r100.5	r103.2	102.7	r102.2	r99.8	r101.7	r102.4	r102.0
1994	r101.4	r108.3	106.8	r103.8	r99.2	r102.3	r106.1	r103.7
1995	r101.5	r111.3	109.7	r105.9	r98.8	r104.4	r107.6	r105.6
1996	r104.4	r116.4	111.5	r109.5	r99.5	r104.9	r111.3	r107.3
1997	r106.3	r122.4	115.2	r113.1	r100.6	r106.4	r113.3	r109.0
1998	r109.4	r128.6	r117.5	r120.0	r105.3	r109.6	r109.8	r109.7
1999	r113.3	r135.7	r119.8	r125.4	r107.8	r110.7	r110.5	r110.6
2000	r117.2	r141.9	r121.0	r134.6	r111.9	r114.8	r108.9	r112.6
2001	r120.7	r143.0	r118.4	r140.9	r114.0	r116.7	r111.0	r114.6
2002	r126.2	r145.8	r115.6	r145.3	r115.6	r115.1	r116.1	r115.5
2003	r131.0	r150.3	r114.7	r152.3	r118.6	r116.2	r118.7	r117.1
2004	r134.9	r156.5	r116.1	r157.6	r119.5	r116.9	r125.8	r120.2
2005	r137.1	r161.8	r118.0	r163.8	r120.2	r119.5	r131.9	r124.1
2006	r138.5	r166.8	r120.4	r170.1	r120.8	r122.8	r135.9	r127.7
2007	r141.0	r170.5	r120.9	r177.3	r122.4	r125.7	r140.0	r131.0
2008	r143.6	r170.5	r118.7	r182.1	r121.1	r126.8	r143.6	r133.0

See footnotes following Table 6.
r=revisedAugust 11, 2009
Source: Bureau of Labor Statistics

Appendix table 2. Nonfarm business sector: Productivity, hourly compensation, unit labor costs, and prices Indexes 1992=100

Year	Output per hour of all persons	Output	Hours of all persons	Compensation per hour (1)	Real compensation per hour (2)	Unit labor costs	Unit non-labor payments (3)	Implicit price deflator (4)
1947	r37.0	r20.1	54.2	r7.5	r43.8	r20.2	r17.8	r19.3
1948	r38.1	r21.0	55.1	r8.1	r44.0	r21.3	r19.4	r20.6
1949	r39.3	r20.8	53.0	r8.4	r45.9	r21.3	r19.9	r20.8
1950	r42.0	r22.9	54.7	r8.9	r48.0	r21.1	r20.8	r21.0
1951	r43.1	r24.7	57.2	r9.6	r48.3	r22.3	r22.4	22.4
1952	r43.9	r25.4	57.9	r10.2	r50.0	r23.2	r22.3	r22.8
1953	r44.9	r26.6	59.3	r10.7	r52.4	r23.9	r22.2	r23.3
1954	r45.7	r26.2	57.3	r11.1	r53.7	r24.2	r22.2	r23.5
1955	r47.7	r28.4	59.6	r11.5	r55.9	r24.1	r23.6	r23.9
1956	r47.3	r28.9	61.1	r12.2	r58.4	r25.7	r23.0	r24.7
1957	r48.5	r29.5	60.7	r12.9	r59.8	r26.5	r23.8	r25.5
1958	r49.6	r28.9	58.2	r13.4	r60.5	r27.0	r24.0	r25.9
1959	r51.5	r31.4	60.9	r13.9	r62.4	r27.0	r24.9	r26.2
1960	r52.1	r31.9	61.2	r14.5	r64.0	r27.8	r24.2	r26.5
1961	r53.7	r32.5	60.6	r15.0	r65.5	r27.9	r24.7	r26.7
1962	r56.2	r34.8	61.9	r15.6	r67.4	r27.7	r25.7	r27.0
1963	r58.1	r36.4	62.6	r16.1	r68.8	r27.7	r26.2	r27.2
1964	r59.8	r38.8	64.9	r16.6	r70.0	r27.8	r27.1	r27.5
1965	r61.7	r41.6	67.4	r17.2	r71.2	r27.8	r28.0	r27.9
1966	r63.9	r44.6	69.8	r18.2	r73.3	r28.5	r28.6	r28.5
1967	r65.0	r45.3	69.7	r19.3	r75.3	r29.6	r29.1	r29.4
1968	r67.2	r47.7	71.0	r20.8	r77.9	r30.9	r30.1	r30.6
1969	r67.3	r49.2	73.0	r22.2	r78.9	r32.9	r30.3	r32.0
1970	r68.3	r49.1	71.9	r23.8	r80.0	r34.8	r31.0	r33.4
1971	r71.1	r51.0	71.7	r25.3	r81.5	r35.6	r33.5	r34.8
1972	r73.4	r54.4	74.0	r26.9	r84.1	r36.7	r34.7	r35.9
1973	r75.7	r58.3	77.0	r29.1	r85.6	r38.4	r35.1	r37.2
1974	r74.5	r57.5	77.2	r31.9	r84.6	r42.9	r37.9	r41.0
1975	r76.6	r56.6	73.9	r35.2	r85.4	r45.9	r44.6	r45.4
1976	r79.1	r60.5	76.5	r38.1	r87.5	r48.2	r47.5	r47.9
1977	r80.4	r63.9	79.5	r41.2	r88.9	r51.3	r50.4	r51.0
1978	r81.4	r68.1	83.7	r44.9	r90.4	r55.1	r53.1	r54.4
1979	r81.1	r70.2	86.6	r49.1	r90.2	r60.5	r56.3	r59.0
1980	r80.9	r69.5	85.9	r54.3	r89.9	r67.2	r60.4	r64.7
1981	r82.0	r71.0	86.6	r59.6	r90.0	r72.7	r67.8	r70.9
1982	r81.1	r68.7	84.7	r63.8	r90.9	r78.7	r69.4	r75.3
1983	r84.7	r73.1	86.3	r66.5	r90.9	r78.5	r76.2	r77.7
1984	r86.4	r79.1	91.6	r69.2	r90.9	r80.1	r79.5	r79.9
1985	r87.8	r82.5	94.0	r72.3	r91.8	r82.3	r81.9	r82.2
1986	r90.5	r85.7	94.7	r76.1	r94.9	r84.1	r82.7	r83.6
1987	r90.8	r88.6	97.6	r78.8	r95.1	r86.8	r83.4	r85.6
1988	r92.3	r92.6	100.4	r82.8	r96.3	r89.7	r85.5	r88.2
1989	r93.0	r95.9	103.1	r84.9	r94.7	r91.3	r91.5	r91.4
1990	r94.7	r97.3	102.7	r90.2	r95.8	r95.2	r93.9	r94.7
1991	r96.2	r96.4	100.2	r94.9	r97.3	r98.7	r96.9	r98.1
1992	100.0	100.0	100.0	100.0	100.0	100.0	100.0	100.0
1993	r100.6	r103.5	102.9	r102.0	r99.6	r101.4	r102.9	r102.0
1994	r101.6	r108.3	106.6	r103.8	r99.2	r102.2	r106.6	r103.8
1995	r102.0	r111.8	109.6	r106.0	r98.9	r103.9	r108.7	r105.7
1996	r104.6	r116.7	111.5	r109.5	r99.5	r104.6	r111.4	r107.1
1997	r106.2	r122.6	115.4	r112.9	r100.4	r106.3	r114.0	r109.1
1998	r109.4	r128.9	r117.9	r119.7	r105.0	r109.4	r110.9	r110.0
1999	r113.0	r136.1	r120.5	r124.8	r107.3	r110.5	r112.0	r111.0
2000	r116.8	r142.2	r121.7	r134.1	r111.5	r114.8	r110.5	r113.2
2001	r120.2	r143.4	r119.3	r140.1	r113.3	r116.5	r112.6	r115.1
2002	r125.7	r146.2	r116.3	r144.5	r115.0	r115.0	r118.1	r116.1
2003	r130.3	r150.6	r115.5	r151.4	r117.9	r116.2	r120.1	r117.6
2004	r134.0	r156.8	r117.0	r156.6	r118.7	r116.8	r126.7	r120.4
2005	r136.2	r162.0	r118.9	r162.8	r119.4	r119.5	r133.6	r124.7
2006	r137.5	r167.1	r121.5	r169.0	r120.0	r122.9	r138.0	r128.5
2007	r140.1	r171.0	r122.1	r176.0	r121.6	r125.7	r141.4	r131.5
2008	r142.6	r170.7	r119.7	r181.0	r120.4	r126.9	r144.8	r133.5

See footnotes following Table 6.
r=revised

August 11, 2009

Source: Bureau of Labor Statistics

Appendix table 3. Nonfinancial corporate sector: Productivity, hourly compensation, unit labor costs, unit profits, and prices

Indexes 1992=100

Year	Output per all-employee hour	Output	Employee hours	Hourly compensation (1)	Real hourly compensation (2)	Unit labor costs	Unit non-labor costs (6)	Total unit costs (7)	Unit profits (8)	Implicit price deflator (4)
1958	r51.6	r24.8	48.0	r15.0	r67.8	r29.1	r24.5	r27.8	r46.0	r29.5
1959	r54.2	r27.6	50.9	r15.6	r69.9	r28.7	r23.5	r27.3	r53.6	r29.7
1960	r55.1	r28.5	51.7	r16.2	r71.5	r29.4	r24.0	r27.9	r49.4	r29.9
1961	r56.9	r29.2	51.3	r16.7	r73.0	r29.4	r24.4	r28.1	r49.5	r30.0
1962	r59.4	r31.7	53.3	r17.4	r75.1	r29.2	r24.1	r27.8	r53.4	r30.2
1963	r61.6	r33.6	54.5	r17.9	r76.4	r29.1	r23.9	r27.7	r56.5	r30.3
1964	r62.6	r35.9	57.5	r18.2	r76.9	r29.2	r23.9	r27.7	r58.6	r30.6
1965	r64.1	r38.9	60.7	r18.8	r77.8	r29.3	r23.7	r27.8	r63.0	r31.0
1966	r65.3	r41.7	63.9	r19.8	r79.9	r30.4	r23.8	r28.6	r62.7	r31.7
1967	r66.3	r42.8	64.6	r20.9	r81.9	r31.6	r25.3	r29.9	r58.6	r32.5
1968	r68.7	r45.6	66.4	r22.5	r84.5	r32.8	r26.8	r31.2	r58.4	r33.7
1969	r68.8	r47.5	69.0	r24.1	r85.6	r34.9	r29.0	r33.3	r52.9	r35.1
1970	r69.3	r47.1	67.9	r25.7	r86.7	r37.1	r32.6	r35.9	r43.2	r36.6
1971	r72.3	r49.0	67.8	r27.3	r88.2	r37.8	r34.2	r36.9	r48.8	r38.0
1972	r73.8	r52.8	71.6	r28.8	r90.0	r39.1	r34.1	r37.7	r53.0	r39.1
1973	r74.5	r56.0	75.2	r31.0	r91.3	r41.6	r36.0	r40.1	r53.6	r41.3
1974	r73.0	r55.1	75.5	r34.0	r90.0	r46.5	r41.3	r45.1	r47.5	r45.3
1975	r75.8	r54.3	71.7	r37.3	r90.6	r49.2	r47.0	r48.6	r61.5	r49.8
1976	r78.4	r58.8	75.0	r40.3	r92.6	r51.5	r46.7	r50.2	r69.5	r52.0
1977	r80.5	r63.1	78.4	r43.5	r93.9	r54.1	r48.4	r52.6	r75.9	r54.7
1978	r81.5	r67.3	82.5	r47.6	r95.9	r58.4	r50.8	r56.3	r78.7	r58.4
1979	r80.8	r69.3	85.8	r51.9	r95.4	r64.2	r55.4	r61.8	r73.9	r62.9
1980	r80.5	r68.6	85.2	r57.1	r94.5	r70.9	r64.9	r69.3	r66.3	r69.0
1981	r82.6	r71.3	86.4	r62.2	r94.0	r75.4	r73.9	r75.0	r79.0	r75.4
1982	r82.8	r69.6	84.1	r66.3	r94.5	r80.1	r82.0	r80.6	r72.9	r79.9
1983	r85.4	r72.9	85.3	r68.8	r94.0	r80.5	r82.2	r81.0	r88.6	r81.7
1984	r87.4	r79.3	90.8	r71.6	r94.0	r82.0	r81.4	r81.8	r106.4	r84.1
1985	r89.2	r82.8	92.9	r74.8	r95.0	r83.9	r83.6	r83.8	r101.8	r85.5
1986	r91.1	r84.9	93.2	r78.6	r97.9	r86.2	r87.5	r86.6	r87.3	r86.6
1987	r93.0	r89.3	96.1	r81.2	r97.9	r87.3	r86.6	r87.1	r98.3	88.1
1988	r95.4	r94.5	99.1	r84.6	r98.4	88.7	r87.7	r88.4	r108.8	r90.3
1989	r94.0	r96.0	102.2	r86.7	r96.6	r92.2	r93.3	r92.5	r99.7	r93.2
1990	r95.1	r97.5	102.5	r90.8	r96.5	r95.6	r97.5	r96.1	r95.9	r96.1
1991	r97.4	r97.0	99.6	r95.4	r97.8	r97.9	r102.6	r99.2	r94.4	98.7
1992	100.0	100.0	100.0	100.0	100.0	100.0	100.0	100.0	100.0	100.0
1993	r100.2	r102.6	102.4	r101.8	r99.3	r101.6	r99.3	r101.0	r114.4	r102.2
1994	r102.3	r109.2	106.8	r103.6	r99.0	r101.3	r99.6	r100.9	r134.0	r103.9
1995	r103.4	r114.4	110.6	r105.4	r98.4	r102.0	r100.0	r101.5	r139.0	r104.9
1996	r107.2	r120.7	112.6	r108.5	r98.6	r101.3	r99.4	r100.8	r150.4	105.3
1997	r110.0	r128.6	116.9	r111.9	r99.5	r101.7	r99.4	r101.1	r154.0	r105.9
1998	r113.8	r136.0	r119.5	r118.6	r104.0	r104.2	r99.8	r103.0	r135.1	r105.9
1999	r117.8	r143.9	r122.2	r123.8	r106.4	r105.1	r102.2	r104.3	r125.2	r106.2
2000	r122.4	r151.5	r123.8	r132.9	r110.5	r108.6	r105.8	r107.9	r104.2	107.5
2001	r123.5	r148.7	r120.4	r137.3	r111.0	r111.2	r112.3	r111.5	r84.0	r109.0
2002	r127.9	r149.4	r116.8	r140.9	r112.2	r110.2	r112.9	r110.9	r96.6	r109.6
2003	r133.0	r153.1	r115.1	r147.3	r114.7	r110.8	r112.7	r111.3	r107.3	r110.9
2004	r137.5	r160.3	r116.6	r150.9	r114.4	r109.7	r111.3	r110.1	r142.7	r113.1
2005	r141.0	r167.3	r118.6	r155.7	r114.2	r110.4	r115.4	r111.8	r161.1	r116.3
2006	r143.0	r173.5	r121.3	r160.2	r113.8	r112.0	r118.9	r113.8	r179.9	r119.9
2007	r144.5	r176.5	r122.1	r166.0	r114.6	r114.9	r125.8	r117.8	r162.1	r121.9
2008	r147.2	r177.2	r120.3	r170.9	r113.7	r116.1	r130.5	r120.0	r135.7	r121.4

See footnotes following Table 6.
r=revised

August 11, 2009

Source: Bureau of Labor Statistics