

Transmission of material in this release is embargoed until
8:30 a.m. (EST) Thursday, December 11, 2014

USDL-14-2209

Technical information: (202) 691-7101 • MXPinfo@bls.gov • www.bls.gov/mxp
Media contact: (202) 691-5902 • PressOffice@bls.gov

U.S. IMPORT AND EXPORT PRICE INDEXES – NOVEMBER 2014

U.S. import prices declined 1.5 percent in November, after falling 1.2 percent in October, the U.S. Bureau of Labor Statistics reported today. Both decreases were driven by declining fuel prices. The price index for U.S. exports fell 1.0 percent in November following a 0.9-percent drop the previous month.

Chart 1. One-month percent change in the Import Price Index: November 2013 – November 2014

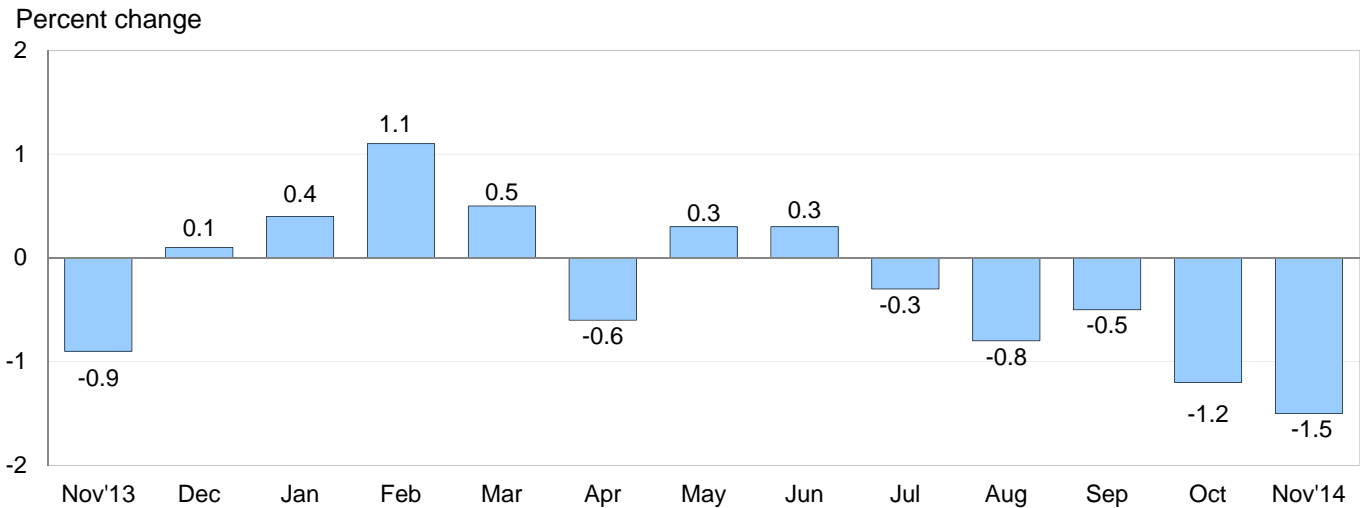
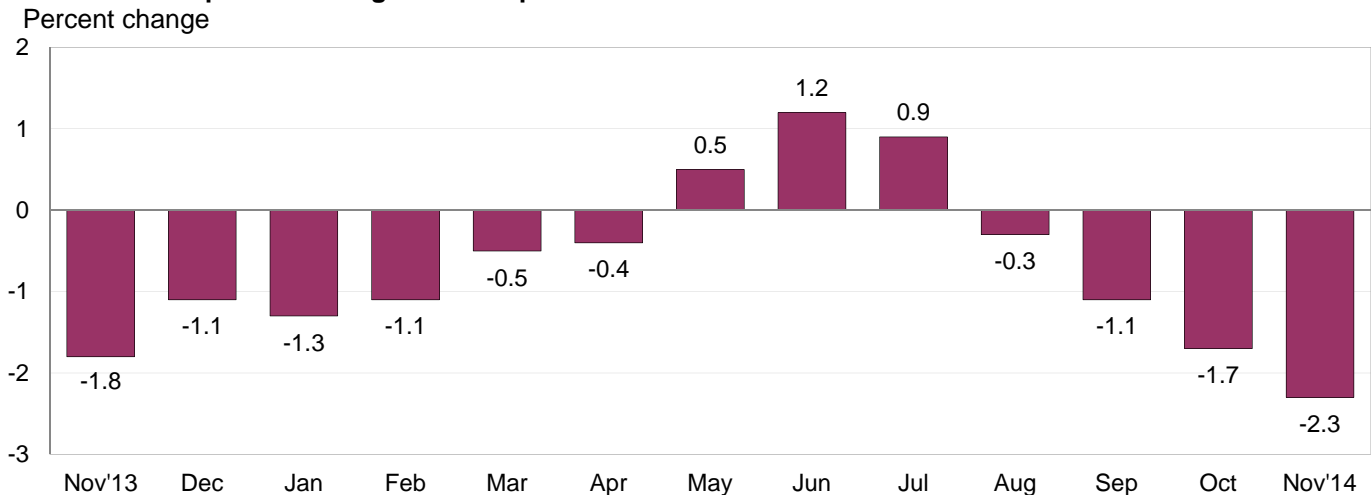


Chart 2. 12-month percent change in the Import Price Index: November 2013 – November 2014



All Imports: Prices for U.S. imports fell 1.5 percent in November, the largest monthly drop in import prices since a 2.3-percent decrease in June 2012. Led by lower fuel prices, overall import prices declined in each of the past 5 months, falling 4.2 percent over that period. The price index for imports fell 2.3 percent over the past 12 months, the largest year-over-year decline since a 2.7-percent decrease between April 2012 and April 2013.

Fuel Imports: Fuel prices decreased 6.7 percent in November, after declining 6.0 percent in October. Those drops were the largest monthly decreases since the index fell 8.5 percent in June 2012. Both monthly declines were driven by lower petroleum prices, which fell 6.9 percent in November and 6.4 percent in October. In November, a 4.6-percent decrease in natural gas prices also contributed to the overall drop in fuel prices, and followed a 0.4-percent advance the previous month. Fuel prices fell 11.5 percent for the year ended November, the largest 12-month drop since the index fell 13.4 percent in July 2012. The November 2014 decrease was led by a 12.3-percent drop in petroleum prices, which more than offset a 10.6-percent increase in natural gas prices over the same period.

All Imports Excluding Fuel: The price index for nonfuel imports decreased 0.2 percent for the third consecutive month in November. Prior to the last 3 months, the last time the index fell by more than 0.2 percent was a 0.4-percent decline in July 2013. Lower prices for nonfuel industrial supplies and materials; foods, feeds, and beverages; and each of the major finished goods categories contributed to the overall decline. Nonfuel import prices were unchanged over the past 12 months as higher prices for consumer goods and foods, feeds, and beverages offset falling prices for nonfuel industrial supplies and materials, automotive vehicles, and capital goods.

Table A. Percent change in Import and Export Price Indexes, selected categories

Month	IMPORTS			EXPORTS		
	All imports	Fuel imports	Nonfuel imports	All exports	Agricultural exports	Non-agricultural exports
2013						
November.....	-0.9	-4.2	0.0	0.2	-0.2	0.1
December.....	0.1	0.7	-0.1	0.4	0.3	0.4
2014						
January.....	0.4	0.8	0.3	0.3	0.0	0.4
February.....	1.1	5.9	0.0	0.8	1.4	0.6
March.....	0.5	1.0	0.3	0.9	2.8	0.7
April.....	-0.6	-2.6	0.0	-1.0	1.5	-1.2
May.....	0.3	1.2	0.0	0.1	0.3	0.0
June.....	0.3	1.6	-0.1	-0.5	-1.9	-0.3
July.....	-0.3	-1.5	0.1	0.1	-1.8	0.2
August.....	-0.8	-3.8 ^r	0.0	-0.5	-3.1	-0.2
September.....	-0.5 ^r	-2.1 ^r	-0.2 ^r	-0.5 ^r	-1.6 ^r	-0.2
October.....	-1.2 ^r	-6.0 ^r	-0.2	-0.9 ^r	-2.1	-0.8 ^r
November.....	-1.5	-6.7	-0.2	-1.0	0.5	-1.2
Nov. 2012 to 2013.....	-1.8	-4.1	-1.2	-1.5	-6.6	-0.9
Nov. 2013 to 2014.....	-2.3	-11.5	0.0	-1.9	-3.8	-1.7

r Revised

Chart 3. One-month percent change in the Export Price Index: November 2013 – November 2014

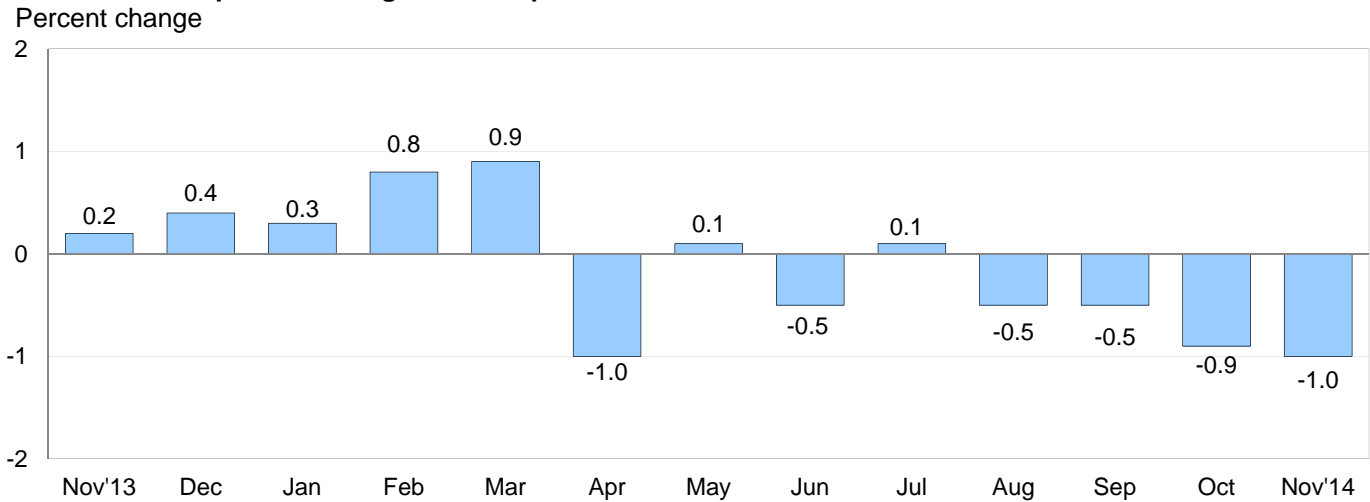
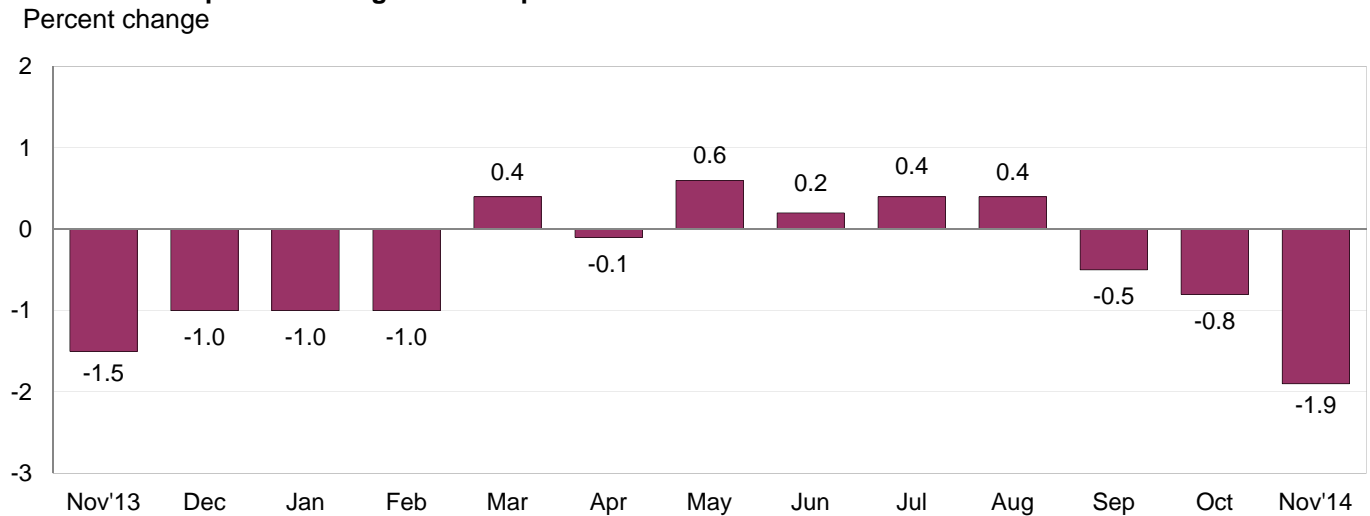


Chart 4. 12-month percent change in the Export Price Index: November 2013 – November 2014



All Exports: Export prices fell 1.0 percent in November, the largest monthly decline since a 1.0-percent drop in April. Those were the largest 1-month decreases since the index fell 1.7 percent in June 2012. In November, lower prices for nonagricultural exports more than offset higher agricultural prices. The price index for overall exports fell 1.9 percent for the November 2013-14 period, the largest 12-month drop since a 2.2-percent decline in October 2013.

Agricultural Exports: Prices for agricultural exports increased 0.5 percent in November following a 10.0-percent decline over the previous 5 months. The November increase was the largest monthly advance since a 1.5-percent rise in April. A 7.0-percent advance in soybean prices led the overall increase, although higher prices for corn and wheat also contributed to the advance. Despite the November rise, agriculture exports fell 3.8 percent over the past 12 months. Lower prices for soybeans, corn, and wheat all factored into the decline over the past year.

All Exports Excluding Agriculture: The price index for nonagricultural exports decreased 1.2 percent in November, after falling 0.8 percent in October. Falling prices for both nonagricultural industrial supplies and materials and finished goods contributed to the overall decline. Nonagricultural exports decreased 1.7 percent between November 2013 and November 2014, as lower prices for nonagricultural industrial supplies and materials and consumer goods more than offset higher prices for capital goods and automotive vehicles.

SELECTED NOVEMBER HIGHLIGHTS

Import Prices

Imports by Locality of Origin: Import prices from China were unchanged for the third consecutive month in November. The price index for imports from China also recorded no change over the past year. Prices for imports from Japan edged down 0.1 percent in November, after recording no change the previous month. Import prices from Japan fell 1.2 percent over the past year. Led by lower fuel prices, the import price indexes for imports from Canada, the European Union, and Mexico all decreased in November. Prices for imports from Canada declined 2.3 percent, import prices from the European Union dropped 0.6 percent, and the price index for imports from Mexico fell 0.7 percent.

Nonfuel Industrial Supplies and Materials: Import prices for nonfuel industrial supplies and materials decreased 0.9 percent following a 0.7-percent decline in October. Both drops were driven by falling metals prices. Unfinished metals prices decreased 2.1 percent in November, after falling 3.6 percent the previous month. Lower prices for gold and other precious metals led the declines in each month.

Finished Goods: Each of the major finished goods areas edged down 0.1 percent in November. The November declines in the price indexes for consumer goods and automotive vehicles followed decreases of 0.2 percent in October. Capital goods prices decreased following a 0.1-percent decline the previous month.

Foods, Feeds, and Beverages: The price index for import foods, feeds, and beverages decreased 0.4 percent in November, after advancing 1.1 percent in October. The November downturn was led by a 2.2-percent drop in fish and shellfish prices and a 4.1-percent decline in coffee prices.

Transportation Services: Import air passenger fares rose 1.0 percent in November following a 2.4-percent increase the previous month. Higher European fares, which advanced 2.8 percent in November and 2.3 percent in October, were the main contributor to both monthly increases. The index for overall import air passenger fares increased 1.9 percent over the past 12 months. Prices for import air freight declined 0.5 percent in November, after falling 1.2 percent in October. Import air freight prices decreased 3.6 percent for the year ended in November.

Export Prices

Nonagricultural Industrial Supplies and Materials: The price index for nonagricultural industrial supplies and materials decreased 3.2 percent in November following a 1.9-percent drop the previous month. The November decline was driven by a 7.9-percent fall in fuel prices, although lower prices for nonferrous metals and chemicals also factored into the overall decrease.

Finished Goods: Finished goods prices were mostly down in November. Consumer goods prices fell 0.3 percent for the third consecutive month, led by a 0.6-percent decline in medical, dental, and pharmaceutical materials prices. Capital goods prices also fell in November, edging down 0.1 percent. The price index for automotive vehicles recorded no change.

Transportation Services: Export air passenger fares fell 4.9 percent in November, after a 3.0-percent drop in October. The November decline was led by a 5.7-percent decrease in European fares. Overall export air passenger fares fell 1.1 percent for the year ended in November. Export air freight prices decreased 0.3 percent in November following a 0.4-percent decline the previous month. Despite the recent drops, the price index for export air freight increased 7.2 percent over the past year.

Import and Export Price Index data for December 2014 are scheduled for release on Wednesday, January 14, 2015 at 8:30 a.m. (EST).

Table 1. U.S. import price indexes and percent changes for selected categories of goods: November 2013 to November 2014

[2000=100, unless otherwise noted]

Description	End Use	Relative importance Oct. 2014 ¹	Index		Percent change				
			Oct. 2014	Nov. 2014	Annual	Monthly			
					Nov. 2013 to Nov. 2014	July 2014 to Aug. 2014	Aug. 2014 to Sept. 2014	Sept. 2014 to Oct. 2014	Oct. 2014 to Nov. 2014
All commodities		100.000	136.6	134.6	-2.3	-0.8	-0.5	-1.2	-1.5
All imports excluding food and fuels (Dec. 2010=100)		76.332	101.9	101.7	-0.3	-0.1	-0.1	-0.3	-0.2
All imports excluding petroleum		82.772	115.4	115.1	0.1	-0.1	-0.1	-0.2	-0.3
All imports excluding fuels (Dec. 2001=100)		81.821	119.3	119.1	0.0	0.0	-0.2	-0.2	-0.2
Foods, feeds, & beverages	0	5.489	181.9	181.2	3.5	0.7	0.1	1.1	-0.4
Agricultural foods, feeds & beverages, excluding distilled beverages.....	00	4.190	199.7	199.6	4.7	0.9	-0.4	1.2	-0.1
Nonagricultural foods (fish, distilled beverages).....	01	1.299	141.5	139.3	0.0	0.1	1.4	0.6	-1.6
Industrial supplies & materials	1	31.336	234.2	224.3	-7.2	-2.3	-1.4	-3.8	-4.2
Industrial supplies & materials excluding petroleum.....		14.109	159.5	157.8	-0.4	-0.7	-0.5	-0.4	-1.1
Industrial supplies & materials excluding fuels (Dec. 2001=100).....		13.158	179.1	177.5	-1.0	-0.1	-0.4	-0.7	-0.9
Industrial supplies & materials, durable....		7.899	166.3	164.3	-2.0	-0.1	-0.4	-1.8	-1.2
Industrial supplies & materials nondurable excluding petroleum.....		5.259	150.7	149.5	1.4	-1.4	-0.7	1.1	-0.8
Fuels & lubricants.....	10	18.178	305.4	285.0	-11.5	-3.8	-2.1	-6.0	-6.7
Petroleum & petroleum products.....	100	17.227	337.6	314.3	-12.3	-3.6	-2.2	-6.4	-6.9
Crude.....	10000	13.149	350.9	328.7	-10.8	-4.3	-4.2	-4.0	-6.3
Fuels, n.e.s.-coals & gas.....	101	0.779	131.0	126.0	9.3	-10.2	-1.7	0.2	-3.8
Gas-natural.....	10110	0.633	118.6	113.1	10.6	-12.4	-2.4	0.4	-4.6
Paper & paper base stocks.....	11	0.546	112.9	112.7	-1.4	0.4	-0.6	-0.3	-0.2
Materials associated with nondurable supplies & materials.....	12	4.783	170.0	169.4	0.5	0.1	-0.5	1.1	-0.4
Selected building materials.....	13	1.060	141.5	140.4	-1.5	-0.1	0.3	-0.7	-0.8
Unfinished metals related to durable goods.....	14	3.520	233.4	228.6	-4.0	-0.6	-0.5	-3.6	-2.1
Finished metals related to durable goods.....	15	1.690	158.9	157.7	1.3	0.5	-0.6	0.3	-0.8
Nonmetals related to durable goods.....	16	1.559	111.9	111.7	-0.7	0.4	-0.1	-0.4	-0.2
Capital goods	2	25.411	92.3	92.2	-0.4	-0.1	-0.1	-0.1	-0.1
Electric generating equipment.....	20	3.086	120.3	120.3	0.8	0.0	-0.1	-0.1	0.0
Nonelectrical machinery.....	21	20.343	84.8	84.7	-0.7	-0.2	-0.1	-0.1	-0.1
Transportation equipment excluding motor vehicles (Dec. 2001=100).....	22	1.982	136.6	136.6	0.4	0.4	0.0	-0.1	0.0
Automotive vehicles, parts & engines	3	13.745	112.4	112.3	-1.0	0.1	-0.2	-0.2	-0.1
Consumer goods, excluding automobiles	4	24.018	108.1	108.0	0.6	0.0	0.0	-0.2	-0.1
Nondurables, manufactured.....	40	11.672	118.8	118.8	2.1	0.2	-0.1	0.0	0.0
Durables, manufactured.....	41	11.123	97.0	97.0	-1.2	-0.2	0.0	-0.4	0.0
Nonmanufactured consumer goods.....	42	1.223	121.1	120.5	2.9	-0.4	0.2	0.0	-0.5

¹ Relative importance figures are based on 2012 trade values.

NOTES: Data may be revised in each of the three months after original publication.

Dash = Not available

Table 2. U.S. export price indexes and percent changes for selected categories of goods: November 2013 to November 2014

[2000=100, unless otherwise noted]

Description	End Use	Relative importance Oct. 2014 ¹	Index		Percent change				
			Oct. 2014	Nov. 2014	Annual	Monthly			
					Nov. 2013 to Nov. 2014	July 2014 to Aug. 2014	Aug. 2014 to Sept. 2014	Sept. 2014 to Oct. 2014	Oct. 2014 to Nov. 2014
All commodities.....		100.000	130.6	129.3	-1.9	-0.5	-0.5	-0.9	-1.0
Agricultural commodities.....		9.478	203.0	204.1	-3.8	-3.1	-1.6	-2.1	0.5
All exports excluding food and fuels (Dec. 2010=100).....		81.952	101.9	101.4	-0.4	0.0	-0.3	-0.3	-0.5
Nonagricultural commodities.....		90.522	125.3	123.8	-1.7	-0.2	-0.2	-0.8	-1.2
Foods, feeds, & beverages.....	0	8.771	205.5	206.5	-2.7	-2.8	-1.5	-2.1	0.5
Agricultural foods, feeds & beverages, excluding distilled beverages.....	00	8.128	207.5	208.9	-2.9	-3.2	-1.6	-2.3	0.7
Nonagricultural foods (fish, distilled beverages).....	01	0.643	191.7	188.2	0.4	1.5	0.1	-0.4	-1.8
Industrial supplies & materials.....	1	32.811	172.0	166.7	-5.4	-0.8	-0.6	-1.9	-3.1
Industrial supplies & materials, durable....		11.148	167.9	165.1	-4.1	-0.4	-0.8	-1.4	-1.7
Industrial supplies & materials, nondurable.....		21.665	175.1	168.5	-6.1	-1.0	-0.6	-2.2	-3.8
Agricultural industrial supplies & materials.....	10	1.350	183.1	182.9	-8.4	-2.4	-1.6	-1.3	-0.1
Nonagricultural industrial supplies & materials.....		31.461	171.8	166.3	-5.3	-0.8	-0.6	-1.9	-3.2
Fuels & lubricants.....	11	9.277	239.1	220.3	-13.2	-2.5	-0.6	-4.6	-7.9
Nonagricultural supplies & materials excluding fuels & building materials.....	12	21.197	165.1	162.9	-1.6	0.0	-0.6	-0.8	-1.3
Selected building materials.....	13	0.987	121.3	121.7	-3.4	-1.1	-0.5	-0.2	0.3
Capital goods.....	2	36.884	107.0	106.9	0.4	0.1	-0.1	-0.2	-0.1
Electrical generating equipment.....	20	3.736	115.3	115.3	0.6	0.0	0.0	-0.5	0.0
Nonelectrical machinery.....	21	26.033	95.3	95.2	-0.2	0.0	0.0	-0.2	-0.1
Transportation equipment excluding motor vehicles (Dec. 2001=100).....	22	7.115	156.2	156.2	2.8	0.1	0.0	-0.1	0.0
Automotive vehicles, parts & engines.....	3	9.636	114.2	114.2	0.5	-0.1	-0.1	0.2	0.0
Consumer goods, excluding automotives.....	4	11.898	114.8	114.5	-0.3	0.1	-0.3	-0.3	-0.3
Nondurables, manufactured.....	40	5.481	111.8	111.3	-2.6	0.1	-0.3	-0.4	-0.4
Durables, manufactured.....	41	5.013	111.2	111.1	-0.5	-0.1	-0.3	-0.4	-0.1

¹ Relative importance figures are based on 2012 trade values.

NOTES: Data may be revised in each of the three months after original publication.

Dash = Not available

Table 3. U.S. import price indexes and percent changes for selected categories of goods: November 2013 to November 2014

[December 2005=100, unless otherwise noted]

Description	NAICS	Relative importance Oct. 2014 ¹	Index		Percent change				
			Oct. 2014	Nov. 2014	Annual Nov. 2013 to Nov. 2014	Monthly			
						July 2014 to Aug. 2014	Aug. 2014 to Sept. 2014	Sept. 2014 to Oct. 2014	Oct. 2014 to Nov. 2014
Nonmanufactured articles.....		16.204	156.2	147.3	-8.2	-4.1	-3.5	-2.7	-5.7
Agriculture, forestry, fishing and hunting.....	11	1.920	185.4	183.2	6.8	0.0	0.1	4.2	-1.2
Crop production.....	111	1.487	195.7	192.8	9.7	-0.2	0.5	5.7	-1.5
Forestry and logging (Dec. 2012=100).....	113	0.123	68.8	67.9	-27.8	-2.9	-5.2	-5.0	-1.3
Mining.....	21	14.284	152.7	143.0	-10.1	-4.6	-3.9	-3.6	-6.4
Mining (except oil and gas) (Dec. 2006=100).....	212	0.243	118.2	118.0	-9.2	-0.2	-0.5	-3.4	-0.2
Manufactured articles.....		83.414	115.5	114.8	-0.9	0.0	0.1	-0.9	-0.6
Manufactured goods, part 1.....	31	10.812	126.5	126.2	1.6	0.5	0.1	-0.2	-0.2
Food manufacturing.....	311	3.172	161.2	159.8	1.8	1.1	-0.2	-0.6	-0.9
Beverage and tobacco product manufacturing.....	312	0.960	117.6	117.6	2.7	0.1	0.0	0.1	0.0
Textile mills (Dec. 2011=100).....	313	0.368	103.4	103.4	2.3	0.3	0.0	0.7	0.0
Textile product mills.....	314	0.777	114.0	114.2	-0.3	0.0	-0.1	-0.2	0.2
Apparel manufacturing.....	315	3.842	112.0	112.2	1.6	0.4	0.4	0.0	0.2
Leather and allied product manufacturing.....	316	1.694	123.8	123.8	1.6	0.1	0.0	0.1	0.0
Manufactured goods, part 2.....	32	17.478	134.2	131.7	-2.7	-0.1	0.8	-3.2	-1.9
Wood product manufacturing.....	321	0.636	120.8	119.1	-2.6	-0.2	0.5	-1.1	-1.4
Paper manufacturing.....	322	1.001	110.9	110.9	-0.3	0.3	-0.3	-0.2	0.0
Printing and related support activities (Dec. 2013=100).....	323	0.191	99.8	99.5	-	0.1	0.1	0.0	-0.3
Petroleum and coal products manufacturing.....	324	3.655	142.0	129.9	-17.3	-1.2	4.6	-15.1	-8.5
Chemical manufacturing.....	325	9.171	138.0	137.8	3.1	0.2	-0.4	0.9	-0.1
Plastics and rubber products manufacturing.....	326	1.967	121.9	122.1	-1.8	0.0	0.0	0.1	0.2
Nonmetallic mineral product manufacturing.....	327	0.856	130.6	130.9	0.8	0.0	0.0	0.2	0.2
Manufactured goods, part 3.....	33	55.124	107.5	107.3	-0.6	0.0	-0.2	-0.4	-0.2
Primary metal manufacturing.....	331	4.177	155.3	152.7	-2.4	-0.2	-0.8	-2.6	-1.7
Fabricated metal product manufacturing.....	332	2.753	127.8	127.3	0.6	0.4	0.2	0.1	-0.4
Machinery manufacturing.....	333	6.978	120.5	120.4	-0.6	-0.1	-0.2	-0.5	-0.1
Computer and electronic product manufacturing.....	334	16.186	79.5	79.4	-1.5	-0.3	-0.1	-0.1	-0.1
Electrical equipment, appliance, and component manufacturing.....	335	4.191	119.1	119.5	0.4	0.3	0.0	-0.3	0.3
Transportation equipment manufacturing.....	336	14.651	111.3	111.1	-0.5	0.1	-0.1	-0.1	-0.2
Furniture and related product manufacturing.....	337	1.394	116.7	116.6	1.8	0.3	0.1	0.0	-0.1
Miscellaneous manufacturing.....	339	4.795	121.5	121.4	0.2	-0.2	-0.2	-0.5	-0.1

¹ Relative importance figures are based on 2012 trade values.

NOTES: Data may be revised in each of the three months after original publication.

Dash = Not available

Table 4. U.S. export price indexes and percent changes for selected categories of goods: November 2013 to November 2014

[December 2005=100, unless otherwise noted]

Description	NAICS	Relative importance Oct. 2014 ¹	Index		Percent change				
			Oct. 2014	Nov. 2014	Annual	Monthly			
					Nov. 2013 to Nov. 2014	July 2014 to Aug. 2014	Aug. 2014 to Sept. 2014	Sept. 2014 to Oct. 2014	Oct. 2014 to Nov. 2014
Nonmanufactured articles.....		6.559	143.2	144.0	-9.1	-4.4	-1.5	-3.5	0.6
Agriculture, forestry, fishing and hunting.....	11	4.381	168.4	172.1	-10.9	-5.2	-1.9	-4.4	2.2
Crop production.....	111	4.163	174.3	178.7	-10.2	-5.3	-2.0	-4.6	2.5
Mining.....	21	2.178	86.7	84.4	-4.8	-2.7	-0.6	-1.8	-2.7
Mining (except oil and gas).....	212	1.315	96.0	95.9	-5.3	0.7	-1.0	-1.6	-0.1
Manufactured articles.....		91.520	119.4	118.2	-1.5	-0.3	-0.2	-0.7	-1.0
Manufactured goods, part 1.....	31	7.264	154.9	154.0	2.2	-0.9	-1.0	-0.6	-0.6
Food manufacturing.....	311	5.182	180.9	179.2	3.9	-0.9	-1.1	-0.5	-0.9
Beverage and tobacco product manufacturing.....	312	0.487	107.9	112.2	-10.2	-2.4	-1.5	-2.4	4.0
Leather and allied product manufacturing (Dec. 2013=100).....	316	0.294	105.8	104.9	–	-0.7	-1.0	-1.0	-0.9
Manufactured goods, part 2.....	32	25.961	128.6	125.0	-5.7	-0.6	-0.4	-1.8	-2.8
Wood product manufacturing.....	321	0.470	124.7	125.8	2.2	-0.1	0.8	-0.3	0.9
Paper manufacturing.....	322	1.873	125.8	125.2	2.0	0.9	-0.7	0.4	-0.5
Petroleum and coal products manufacturing.....	324	6.796	150.1	136.5	-17.3	-2.6	-0.6	-5.7	-9.1
Chemical manufacturing.....	325	13.547	127.5	126.5	-1.8	0.2	-0.4	-0.5	-0.8
Plastics and rubber products manufacturing.....	326	2.206	119.1	118.9	-1.1	0.3	0.0	-0.1	-0.2
Nonmetallic mineral product manufacturing.....	327	0.779	111.9	111.9	-0.1	-1.1	-0.1	-0.1	0.0
Manufactured goods, part 3.....	33	58.296	112.4	112.1	-0.1	-0.1	-0.1	-0.4	-0.3
Primary metal manufacturing.....	331	4.636	144.7	141.5	-5.5	-0.4	-1.2	-2.6	-2.2
Fabricated metal product manufacturing... ..	332	2.761	128.1	128.0	-2.4	-0.2	0.0	0.1	-0.1
Machinery manufacturing.....	333	11.934	123.8	123.9	0.8	0.0	-0.1	0.0	0.1
Computer and electronic product manufacturing.....	334	13.919	87.0	86.7	-1.7	0.1	-0.2	-0.5	-0.3
Electrical equipment, appliance, and component manufacturing.....	335	3.552	114.9	114.7	1.0	0.0	-0.2	0.3	-0.2
Transportation equipment manufacturing..	336	15.956	120.0	120.0	1.5	-0.1	0.0	0.1	0.0
Furniture and related product manufacturing (Dec. 2011=100).....	337	0.374	109.3	109.3	1.9	0.9	-0.3	0.6	0.0
Miscellaneous manufacturing.....	339	5.164	124.9	125.2	3.0	0.2	0.1	-0.3	0.2

¹ Relative importance figures are based on 2012 trade values.

NOTES: Data may be revised in each of the three months after original publication.

Dash = Not available

Table 5. U.S. import price indexes and percent changes for selected categories of goods: November 2013 to November 2014

[2000=100, unless otherwise noted]

Description	Harmonized system	Relative importance Oct. 2014 ¹	Index		Percent change				
			Oct. 2014	Nov. 2014	Annual	Monthly			
					Nov. 2013 to Nov. 2014	July 2014 to Aug. 2014	Aug. 2014 to Sept. 2014	Sept. 2014 to Oct. 2014	Oct. 2014 to Nov. 2014
Live animals; animal products.....	I	1.376	203.5	201.2	6.9	1.6	0.4	0.0	-1.1
Meat and edible meat offal.....	02	0.324	266.7	263.1	19.0	4.0	-0.2	-2.9	-1.3
Fish and crustaceans, molluscs and other aquatic invertebrates.....	03	0.716	141.8	139.2	-2.9	-0.7	1.5	1.1	-1.8
Vegetable products.....	II	1.754	208.1	205.6	4.3	-0.1	0.5	4.3	-1.2
Edible vegetables, roots, and tubers.....	07	0.483	446.4	423.6	12.5	-2.1	4.5	19.5	-5.1
Edible fruit and nuts; peel of citrus fruit or melons.....	08	0.392	95.3	99.6	-9.5	3.8	-2.1	-4.2	4.5
Coffee, tea, mate and spices.....	09	0.378	263.6	257.3	18.1	1.4	0.4	3.7	-2.4
Animal or vegetable fats and oils (Dec. 2009=100).....	III	0.248	112.7	112.4	-2.9	0.9	-5.5	1.6	-0.3
Prepared foodstuffs, beverages, and tobacco.....	IV	2.581	162.8	162.0	1.6	0.6	-0.1	-0.4	-0.5
Sugars and sugar confectionary (Dec. 2012=100).....	17	0.172	90.1	90.2	1.0	1.7	-1.2	-0.6	0.1
Cocoa and cocoa preparations (Dec. 2009=100).....	18	0.265	118.5	112.7	11.1	2.3	-0.3	1.5	-4.9
Preparations of cereals, flour, starch or milk; bakers' wares (Dec. 2007=100).....	19	0.254	133.7	133.6	2.2	0.6	0.3	0.5	-0.1
Preparations of vegetables, fruit, nuts, or other parts of plants.....	20	0.303	163.7	166.0	0.1	-0.6	0.1	-2.1	1.4
Beverages, spirits, and vinegar.....	22	0.975	128.3	128.3	2.5	0.3	-0.2	0.2	0.0
Mineral products.....	V	18.039	307.0	286.5	-11.5	-3.8	-2.2	-6.2	-6.7
Mineral fuels, oils and residuals, bituminous substances and mineral waxes.....	27	17.792	304.3	283.8	-11.4	-3.9	-2.2	-6.2	-6.7
Products of the chemical or allied industries.....	VI	8.345	152.7	152.4	2.8	-0.1	-0.3	0.5	-0.2
Inorganic chemicals.....	28	0.668	332.0	340.0	9.0	-0.5	1.7	6.1	2.4
Organic chemicals.....	29	2.421	134.0	133.1	-1.7	-0.2	-0.7	-0.9	-0.7
Pharmaceutical products.....	30	3.433	134.1	133.9	6.4	0.1	-0.3	0.0	-0.1
Fertilizers (Dec. 2009=100).....	31	0.345	116.9	114.9	8.6	-0.8	2.3	7.6	-1.7
Tanning extracts; dye, pigments, varnish, paints & putty (Dec. 2011=100).....	32	0.186	106.2	106.2	12.5	2.6	0.0	0.9	0.0
Miscellaneous chemical products.....	38	0.474	93.2	93.0	-3.9	0.0	0.0	0.0	-0.2
Plastics and articles thereof; rubber and articles thereof.....	VII	3.190	146.4	146.4	-1.8	-0.1	-0.6	0.3	0.0
Plastics and articles thereof.....	39	2.068	150.4	150.3	1.6	0.0	-0.5	0.7	-0.1
Rubber and articles thereof.....	40	1.122	140.9	141.2	-7.5	-0.4	-0.8	-0.6	0.2
Raw hides, skins, leather, furskins, travel goods, etc.....	VIII	0.628	127.9	127.8	1.3	-0.1	0.0	0.0	-0.1
Articles of leather; travel goods, bags, etc. of various materials.....	42	0.591	130.3	130.2	2.1	-0.1	0.0	0.0	-0.1
Wood, wood charcoal, cork, straw, basketware and wickerwork.....	IX	0.667	146.4	144.6	-2.6	-0.3	0.4	-1.0	-1.2
Woodpulp, recovered paper, and paper products.....	X	1.058	113.0	112.9	-1.3	0.1	-0.4	-0.3	-0.1
Paper and paperboard; articles of paper pulp, paper or paperboard.....	48	0.700	107.0	106.7	-1.2	0.1	-0.3	0.0	-0.3
Printed matter (Dec. 2013=100).....	49	0.198	99.6	99.3	-	0.1	0.0	-0.3	-0.3
Textile and textile articles.....	XI	4.856	115.0	115.2	1.1	0.3	0.3	0.0	0.2
Articles of apparel and clothing accessories, knitted or crocheted.....	61	1.898	103.9	104.1	1.3	0.0	1.0	0.0	0.2

See footnotes at end of table.

Table 5. U.S. import price indexes and percent changes for selected categories of goods: November 2013 to November 2014 — Continued
 [2000=100, unless otherwise noted]

Description	Harmoni- zied system	Relative importance Oct. 2014 ¹	Index		Percent change				
			Oct. 2014	Nov. 2014	Annual	Monthly			
					Nov. 2013 to Nov. 2014	July 2014 to Aug. 2014	Aug. 2014 to Sept. 2014	Sept. 2014 to Oct. 2014	Oct. 2014 to Nov. 2014
Articles of apparel and clothing accessories, not knitted or crocheted.....	62	1.766	120.2	120.4	1.5	0.6	0.0	-0.1	0.2
Made-up or worn textile articles.....	63	0.558	107.4	107.7	0.1	-0.1	-0.1	-0.4	0.3
Headgear, umbrellas, artificial flowers, etc...	XII	1.363	122.5	122.4	1.1	0.2	0.0	0.2	-0.1
Footwear and parts of such articles.....	64	1.175	121.8	121.7	1.2	0.2	0.0	0.1	-0.1
Stone, plaster, cement, asbestos, ceramics, glass etc.....	XIII	0.791	133.2	133.4	0.3	0.1	0.0	0.1	0.2
Articles of stone, plaster, cement, asbestos, or mica (Dec. 2001=100).....	68	0.261	126.2	126.7	0.5	0.2	0.2	0.0	0.4
Ceramic products.....	69	0.244	141.7	141.5	0.5	0.1	-0.1	0.1	-0.1
Glass and glassware.....	70	0.286	129.6	130.0	0.1	-0.1	0.0	0.1	0.3
Pearls, stones, precious metals, imitation jewelry, and coins.....	XIV	2.615	176.1	172.3	-5.2	-0.9	-1.2	-3.2	-2.2
Base metals and articles of base metals. ...	XV	5.464	182.9	182.0	1.1	0.3	0.1	-0.8	-0.5
Iron and steel.....	72	1.293	221.4	218.2	1.0	-0.4	0.4	-0.9	-1.4
Articles of iron or steel.....	73	1.733	155.7	155.8	1.4	0.2	0.1	0.3	0.1
Copper and articles thereof.....	74	0.442	325.0	320.1	-4.0	2.7	-1.8	-0.8	-1.5
Aluminum and articles thereof.....	76	0.749	142.4	144.0	5.9	1.6	0.6	-1.7	1.1
Tools, implements, cutlery, spoons and forks, of base metal; parts thereof.....	82	0.401	129.0	129.0	-0.6	0.0	-0.1	0.0	0.0
Miscellaneous articles of base metal.....	83	0.457	137.9	138.0	1.8	1.0	0.1	-0.4	0.1
Machinery, electrical equipment, TV image and sound recorders, parts, etc.....	XVI	27.550	84.1	84.0	-0.7	-0.1	0.0	-0.2	-0.1
Machinery and mechanical appliances; parts thereof.....	84	14.323	89.2	89.1	-0.6	-0.2	-0.1	-0.1	-0.1
Electrical machinery and equip, sound and TV recorders & reproducers, parts.....	85	13.227	79.2	79.1	-1.0	-0.1	0.0	-0.3	-0.1
Vehicles, aircraft, vessels and associated transport equipment.....	XVII	12.268	115.4	115.3	-0.6	0.0	-0.1	0.0	-0.1
Motor vehicles and their parts.....	87	11.229	114.1	113.9	-0.7	0.0	-0.1	0.0	-0.2
Aircraft, spacecraft, and parts thereof (Dec. 2002=100).....	88	0.936	120.2	120.2	-0.1	0.0	0.1	0.0	0.0
Optical, photo, measuring, medical & musical instruments; & timepieces.....	XVIII	3.485	104.0	104.0	-0.4	0.2	-0.4	-0.5	0.0
Optical, photographic, measuring and medical instruments.....	90	3.184	100.9	100.8	-0.4	0.2	-0.4	-0.4	-0.1
Clocks and watches and parts thereof.....	91	0.242	141.0	143.0	0.6	0.1	-0.2	-1.5	1.4
Miscellaneous manufactured articles.....	XX	3.640	113.9	113.9	0.6	0.0	0.0	0.0	0.0
Furniture & stuffed furnishings; lamps & lighting fittings, nesoi; prefab bldgs.....	94	2.126	118.5	118.4	1.0	0.1	-0.1	0.1	-0.1
Toys, games and sports equipment; parts and accessories thereof.....	95	1.277	105.6	105.7	0.3	-0.1	-0.1	-0.1	0.1
Miscellaneous manufactured articles.....	96	0.237	135.1	135.1	-2.5	0.0	-0.1	0.2	0.0

¹ Relative importance figures are based on 2012 trade values.

NOTES: Data may be revised in each of the three months after original publication.

Dash = Not available

Table 6. U.S. export price indexes and percent changes for selected categories of goods: November 2013 to November 2014

[2000=100, unless otherwise noted]

Description	Harmoni- zied system	Relative importance Oct. 2014 ¹	Index		Percent change				
			Oct. 2014	Nov. 2014	Annual	Monthly			
					Nov. 2013 to Nov. 2014	July 2014 to Aug. 2014	Aug. 2014 to Sept. 2014	Sept. 2014 to Oct. 2014	Oct. 2014 to Nov. 2014
Live animals; animal products.....	I	2.285	248.3	245.4	9.4	-0.2	-1.3	0.1	-1.2
Meat & edible meat offal (Dec. 2006=100)...	02	1.393	197.9	196.7	17.5	0.6	-2.3	1.2	-0.6
Fish and crustaceans, molluscs and other aquatic invertebrates.....	03	0.372	209.7	206.6	3.5	2.4	0.6	-1.5	-1.5
Vegetable products.....	II	4.154	218.3	223.6	-8.6	-5.4	-1.5	-3.4	2.4
Edible fruit and nuts; peel of citrus fruit or melons.....	08	1.248	190.1	182.2	3.1	-1.5	4.5	10.0	-4.2
Cereals.....	10	0.965	207.6	220.9	-10.3	-4.8	-2.7	-5.5	6.4
Oilseeds and misc. grains, seeds, fruits, plants, straw and fodder.....	12	1.520	215.4	228.3	-12.5	-7.9	-5.0	-12.3	6.0
Animal or vegetable fats and oils (Dec. 2009=100).....	III	0.236	106.1	105.1	-9.5	-2.0	-4.5	-1.1	-0.9
Prepared foodstuffs, beverages, and tobacco.....	IV	2.854	161.2	161.1	-2.4	-1.8	-0.5	-1.3	-0.1
Preparations of vegetables, fruit, nuts or other parts of plants (Dec. 2009=100).....	20	0.355	117.7	117.5	4.6	0.0	-0.3	0.0	-0.2
Beverages, spirits, and vinegar (Dec. 2008=100).....	22	0.488	109.9	112.1	-0.8	0.1	-0.2	-0.7	2.0
Residues and waste from the food industries; prepared animal feed.....	23	0.643	231.3	229.7	-12.0	-6.9	-1.6	-4.4	-0.7
Mineral products.....	V	8.987	274.3	254.6	-14.4	-2.5	-0.6	-4.7	-7.2
Ores, slag and ash (Dec. 2012=100).....	26	0.453	95.5	95.4	3.5	2.7	-1.4	-2.4	-0.1
Mineral fuels, oils and residuals, bituminous substances and mineral waxes.....	27	8.354	269.9	249.0	-15.5	-2.8	-0.5	-4.9	-7.7
Products of the chemical or allied industries.....	VI	10.954	149.2	148.2	-1.9	-0.1	-0.3	-0.5	-0.7
Inorganic chemicals.....	28	0.908	175.0	174.8	-1.3	0.2	0.6	1.7	-0.1
Organic chemicals.....	29	3.207	164.9	163.0	1.4	-0.2	-1.2	-1.3	-1.2
Pharmaceutical products.....	30	2.592	114.5	113.6	-6.3	0.0	-0.4	-0.9	-0.8
Fertilizers (Dec. 2012=100).....	31	0.304	83.5	82.7	4.9	0.7	-0.2	-3.2	-1.0
Essential oils and resinoids; perfumery cosmetic or toilet preparations.....	33	0.716	133.1	132.9	-1.9	0.0	-0.4	0.0	-0.2
Soap; lubricants; waxes, polishing or scouring products; candles, pastes.....	34	0.462	118.1	116.9	-3.7	0.5	0.4	0.3	-1.0
Miscellaneous chemical products.....	38	1.782	153.2	152.8	-0.8	-0.9	0.9	0.2	-0.3
Plastics and articles thereof; rubber and articles thereof.....	VII	5.302	151.0	149.3	-0.2	0.6	-0.1	0.0	-1.1
Plastics and articles thereof.....	39	4.316	146.1	145.0	0.7	0.6	0.0	0.0	-0.8
Rubber and articles thereof.....	40	0.986	171.5	167.2	-3.8	0.2	-0.7	0.0	-2.5
Raw hides, skins, leather, furskins, travel goods, etc.....	VIII	0.460	160.2	158.6	7.4	0.1	-0.3	-0.7	-1.0
Woodpulp, recovered paper, and paper products.....	X	2.336	125.9	125.2	1.8	0.9	-1.0	0.5	-0.6
Woodpulp and recovered paper.....	47	0.693	129.2	127.5	-0.7	1.4	-1.6	-0.5	-1.3
Paper and paperboard; articles of paper pulp, paper or paperboard.....	48	1.200	125.0	124.7	3.2	0.6	-1.3	0.9	-0.2
Textile and textile articles.....	XI	1.860	127.9	126.3	-4.0	-1.2	-0.7	-0.7	-1.3
Cotton, including yarns and woven fabrics thereof.....	52	0.539	130.2	127.2	-12.2	-4.0	-2.3	-1.0	-2.3
Stone, plaster, cement, asbestos, ceramics, glass etc.....	XIII	0.756	120.0	120.0	1.2	-0.1	0.0	-0.1	0.0
Glass and glassware.....	70	0.387	98.4	98.4	0.9	-0.1	0.0	-0.2	0.0

See footnotes at end of table.

Table 6. U.S. export price indexes and percent changes for selected categories of goods: November 2013 to November 2014 — Continued
 [2000=100, unless otherwise noted]

Description	Harmonized system	Relative importance Oct. 2014 ¹	Index		Percent change				
			Oct. 2014	Nov. 2014	Annual	Monthly			
					Nov. 2013 to Nov. 2014	July 2014 to Aug. 2014	Aug. 2014 to Sept. 2014	Sept. 2014 to Oct. 2014	Oct. 2014 to Nov. 2014
Pearls, stones, precious metals, imitation jewelry, and coins.....	XIV	4.362	241.6	235.8	-3.8	-0.4	-1.3	-2.6	-2.4
Base metals and articles of base metals. ...	XV	5.329	162.2	160.5	-2.8	-0.5	-0.5	-0.6	-1.0
Iron and steel.....	72	1.434	189.2	182.8	-1.6	-1.7	-1.2	2.4	-3.4
Copper and articles thereof.....	74	0.553	206.2	206.8	-12.7	-0.9	-2.0	-8.4	0.3
Aluminum and articles thereof.....	76	0.877	124.5	124.6	2.9	1.7	-0.1	-1.2	0.1
Tools, implements, cutlery, spoons and forks, of base metal; parts thereof.....	82	0.402	136.4	136.3	0.2	-1.0	-1.2	0.0	-0.1
Miscellaneous articles of base metal.....	83	0.317	147.1	147.1	-0.1	0.0	0.0	0.0	0.0
Machinery, electrical equipment, TV image and sound recorders, parts, etc.....	XVI	28.161	97.0	96.9	-0.1	0.0	-0.1	-0.2	-0.1
Machinery and mechanical appliances; parts thereof.....	84	17.104	112.8	112.7	0.9	-0.1	0.1	0.0	-0.1
Electrical machinery and equipment and parts and accessories thereof.....	85	11.057	79.9	79.7	-1.7	0.0	-0.2	-0.6	-0.3
Vehicles, aircraft, vessels and associated transport equipment.....	XVII	13.700	130.1	130.1	1.2	0.0	0.0	0.1	0.0
Motor vehicles and their parts.....	87	8.917	115.3	115.3	0.9	-0.1	0.0	0.2	0.0
Optical, photo, measuring, medical & musical instruments; & timepieces.....	XVIII	6.123	107.9	107.7	0.4	0.4	0.0	-0.1	-0.2
Miscellaneous manufactured articles.....	XX	1.448	111.2	110.8	0.9	0.5	-0.4	0.5	-0.4
Furniture; stuffed furnishings; lamps and lighting fittings nesoi;.....	94	0.808	123.4	122.5	1.0	0.9	-0.7	1.1	-0.7
Toys, games and sports equipment; parts and accessories thereof.....	95	0.485	89.6	89.6	1.2	0.0	0.0	0.1	0.0

¹ Relative importance figures are based on 2012 trade values.

NOTES: Data may be revised in each of the three months after original publication.

Dash = Not available

Table 7. U.S. import price indexes and percent changes by locality of origin: November 2013 to November 2014
[2000=100, unless otherwise noted]

Description	Relative importance Oct. 2014 ¹	Index		Percent change				
		Oct. 2014	Nov. 2014	Annual	Monthly			
				Nov. 2013 to Nov. 2014	July 2014 to Aug. 2014	Aug. 2014 to Sept. 2014	Sept. 2014 to Oct. 2014	Oct. 2014 to Nov. 2014
Industrialized Countries²	100.000	130.4	128.8	-1.1	-0.8	-0.8	-0.8	-1.2
Nonmanufactured articles.....	11.966	227.0	214.2	-0.6	-7.7	-1.9	-1.0	-5.6
Manufactured articles.....	87.470	122.6	121.8	-1.1	0.2	-0.7	-0.7	-0.7
Other Countries³	100.000	134.9	133.0	-3.2	-0.7	-0.9	-1.0	-1.4
Nonmanufactured articles.....	18.700	316.4	298.5	-11.2	-2.8	-4.0	-3.4	-5.7
Manufactured articles.....	81.061	108.9	108.5	-1.2	-0.1	-0.1	-0.5	-0.4
Canada	100.000	149.6	146.1	-0.8	-2.4	-0.9	-0.6	-2.3
Nonmanufactured articles.....	31.197	219.4	207.1	0.4	-7.8	-1.8	-1.0	-5.6
Manufactured articles.....	67.940	134.9	133.9	-1.2	0.4	-0.6	-0.4	-0.7
European Union⁴	100.000	136.8	136.0	-0.5	0.2	-0.9	-1.1	-0.6
Manufactured articles.....	99.341	133.1	132.3	-0.5	0.1	-0.9	-1.0	-0.6
France (Dec. 2003=100)	100.000	123.3	123.2	0.6	0.1	-0.1	0.2	-0.1
Germany (Dec. 2003=100)	100.000	119.0	118.5	0.9	0.0	-0.5	0.5	-0.4
United Kingdom (Dec. 2003=100)	100.000	130.6	130.4	0.9	-0.1	-0.2	-0.9	-0.2
Latin America⁵	100.000	167.3	164.4	-3.7	-1.0	-1.3	-0.7	-1.7
Nonmanufactured articles.....	27.605	339.1	321.0	-8.9	-3.7	-3.8	-0.8	-5.3
Manufactured articles.....	72.005	129.1	128.6	-1.7	0.1	-0.3	-0.5	-0.4
Mexico (Dec. 2003=100)	100.000	139.1	138.1	-1.9	-0.2	-0.6	-0.9	-0.7
Nonmanufactured articles (Dec. 2008=100).....	15.700	180.0	170.8	-8.1	-2.3	-2.6	-3.3	-5.1
Manufactured articles (Dec. 2008=100)...	84.054	92.4	92.4	-0.9	0.2	-0.2	-0.4	0.0
Pacific Rim (Dec. 2003=100)⁶	100.000	102.2	102.1	-1.1	-0.2	-0.2	0.1	-0.1
China (Dec. 2003=100)	100.000	103.7	103.7	0.0	-0.2	0.0	0.0	0.0
Japan	100.000	98.5	98.4	-1.2	0.0	-0.1	0.0	-0.1
Asian NICs⁷	100.000	88.9	88.6	-2.5	-0.1	0.1	0.0	-0.3
ASEAN (Dec. 2003=100)⁸	100.000	102.3	102.1	-2.8	-0.2	-1.4	0.3	-0.2
Asia Near East (Dec. 2003=100)⁹	100.000	243.4	230.6	-9.6	-1.3	-2.9	-6.5	-5.3

¹ Relative importance figures are based on 2012 trade values.

² Western Europe, Canada, Japan, Australia, New Zealand and South Africa.

³ Eastern Europe, Latin America, OPEC countries, and other countries in Asia, Africa and the Western Hemisphere.

⁴ European Union countries.

⁵ Mexico, Central America, South America and the Caribbean.

⁶ China, Japan, Australia, Brunei, Indonesia, Macao, Malaysia, New Zealand, Papua New Guinea, Philippines and the Asian Newly Industrialized Countries.

⁷ Asian Newly Industrialized Countries - Hong Kong, Singapore, South Korea and Taiwan.

⁸ Association of Southeast Asian Nations - Brunei, Cambodia, Indonesia, Laos, Malaysia, Myanmar, Philippines, Singapore, Thailand and Vietnam.

⁹ Bahrain, Iran, Iraq, Israel, Jordan, Kuwait, Lebanon, Oman, Qatar, Saudi Arabia, Syria, United Arab Emirates and Yemen.

NOTES: Data may be revised in each of the three months after original publication.

Regions are not mutually exclusive.

Dash = Not available

Table 8. U.S. international price indexes and percent changes for selected transportation services: November 2013 to November 2014

[2000=100, unless otherwise noted]

Description	Relative importance Oct. 2014 ¹	Index		Percent change				
		Oct. 2014	Nov. 2014	Annual Nov. 2013 to Nov. 2014	Monthly			
					July 2014 to Aug. 2014	Aug. 2014 to Sept. 2014	Sept. 2014 to Oct. 2014	Oct. 2014 to Nov. 2014
Air Freight								
Import Air Freight	100.000	172.5	171.6	-3.6	0.3	-0.7	-1.2	-0.5
Europe (Dec. 2003=100).....	27.718	171.6	169.1	-6.5	-0.3	-1.6	-2.7	-1.5
Asia.....	69.059	150.4	150.1	-2.7	0.6	-0.4	-0.7	-0.2
Export Air Freight	100.000	158.8	158.4	7.2	0.1	-0.4	-0.4	-0.3
Europe (Dec. 2006=100).....	35.826	143.0	142.9	7.8	0.2	-0.2	0.0	-0.1
Inbound Air Freight	100.000	163.1	162.3	-1.9	0.1	-0.6	-0.8	-0.5
Europe (Dec. 2003=100).....	26.967	154.7	152.6	-3.3	-0.2	-1.3	-1.8	-1.4
Asia.....	63.327	146.5	146.2	-1.6	0.2	-0.4	-0.4	-0.2
Outbound Air Freight	100.000	152.9	152.7	4.2	0.0	-0.1	-0.1	-0.1
Europe (Dec. 2003=100).....	33.508	171.9	171.9	4.9	0.0	0.0	0.0	0.0
Asia.....	47.126	144.9	144.6	4.1	0.0	-0.1	0.0	-0.2
Air Passenger Fares								
Import Air Passenger Fares	100.000	197.9	199.9	1.9	-4.3	-0.3	2.4	1.0
Europe.....	46.855	220.5	226.6	1.2	-6.9	3.5	2.3	2.8
Asia.....	25.286	149.7	148.3	-0.7	-3.2	-7.2	1.4	-0.9
Latin America/Caribbean.....	9.568	171.2	168.4	-1.3	0.8	-5.5	4.5	-1.6
Export Air Passenger Fares	100.000	184.4	175.4	-1.1	5.5	-11.4	-3.0	-4.9
Europe.....	28.201	230.7	217.6	-1.7	-8.8	-2.3	-1.1	-5.7
Asia.....	28.195	152.1	153.2	3.0	19.2	-23.0	-3.4	0.7
Latin America/Caribbean.....	18.813	190.0	184.9	-3.6	2.8	-1.5	0.1	-2.7

¹ Relative importance figures are based on 2012 trade values.

NOTES: Data may be revised in each of the three months after original publication.

Dash = Not available

TECHNICAL NOTE

Import and Export Merchandise and Services Price Indexes -- All indexes use a modified Laspeyres formula and are not seasonally adjusted. Price indexes are reweighted annually, with a two-year lag in the weights. Published series use a base year of 2000=100 where possible. More detailed index series and additional information may be obtained at <http://www.bls.gov/mxp>, or by calling (202) 691-7101.

Merchandise Goods Classification Systems -- The merchandise price indexes are published using three classification systems. Items are classified by end use according to the Bureau of Economic Analysis Classification System, by industry according to the North American Industry Classification System (NAICS), and by product category according to the Harmonized System (HS). While classification by end use and product category are self-explanatory, some notes are in order for classifying items by industry. In the NAICS imports and exports tables, items are classified by output industry, not input industry. As an example, NAICS import index 326 (plastics and rubber products manufacturing) include outputs such as manufactured plastic rather than inputs such as petroleum. The NAICS classification structure also matches the classification system used by the PPI (Producer Price Index) to produce the NAICS primary products indexes.

Import Price Indexes -- Products have been classified by the Harmonized Tariff Schedule of the United States Annotated (TSUSA). Import prices are based on U.S. dollar prices paid by the U.S. importer. The prices are generally either "free on board" (f.o.b.) foreign port or "cost, insurance, and freight" (c.i.f.) U.S. port transaction prices, depending on the practices of the individual industry. The index for crude petroleum is calculated from data collected by the U.S. Department of Energy.

Export Price Indexes -- Products have been classified by the Harmonized Schedule B classification system of the U.S. Bureau of the Census. The prices used are generally either "free alongside ship" (f.a.s.) factory or "free on board" (f.o.b.) transaction prices, depending on the practices of the individual industry. Prices used in the grain index, excluding rice, are obtained from the U.S. Department of Agriculture.

Services Price Indexes -- Starting in September 2008 the Import Air Passenger Fares Indexes represent changes in the average revenue per passenger received by foreign carriers from U.S. residents and are calculated from data obtained from an airline consulting service. These data include tickets sold by travel agencies and travel websites. Tickets sold directly by the airlines are excluded, as are frequent flyer tickets generally. Starting in January 2008 the Export Air Passenger Fares Indexes represent changes in the average revenue per passenger received by U.S. carriers from foreign residents and are calculated from data collected directly from airlines. These data include frequent flyer tickets and those sold by consolidators. Taxes and fees are included in the Import Air Passenger Fares Index and excluded from the Export Air Passenger Fares Index. The Air Freight Indexes are calculated from data collected directly from airlines. These data exclude mail and passenger baggage. The scope of the service being priced is the movement of freight from airport to airport only, and does not include any ground transportation or port service. The Air Freight Indexes are presented using two definitions: Balance of Payments (which represent transactions between U.S. and foreign residents) and International (which represent transactions inbound to and outbound from the U.S.). Fact sheets specifying detailed information for each services industry are available at <http://www.bls.gov/mxp> under "MXP Publications."

Import Indexes by Locality of Origin -- Prices used in these indexes are a subset of the data collected for the Import Price Indexes. Beginning with January 2002, the indexes are defined by locality of origin using a nomenclature based upon the North American Industry Classification System (NAICS). Nonmanufactured goods are defined as NAICS 11 and 21 and manufactured goods are defined as NAICS 31-33.

Revision Policy -- To reflect the availability of late reports and corrections by respondents, monthly data may be revised in each of the three months after original publication. After three months, no further data revisions take place. So, for example, data released in the January release will be subject to revision in the releases for February, March, and April.

Uses of the Data -- The primary use of the indexes is to deflate trade statistics, notably the foreign trade sector of the National Income and Product Accounts constructed by the Department of Commerce. Other published indexes are useful for general market analysis. For trade in international services, Balance of Payments indexes are used for deflating National Income and Product Accounts, while International indexes are more appropriate for market analysis. Merchandise and services indexes also can be used to study U.S. competitiveness and to compute price elasticities, and the merchandise import indexes by country or region of origin are useful in terms of trade analysis.

E-Mail Subscription -- The U.S. Import and Export Price Indexes news release is available through an e-mail subscription service at (<http://www.bls.gov/bls/list.htm>).

Additional Information -- More detailed data are available on the Import/Export Price Indexes home page at (<http://www.bls.gov/mxp>). For technical assistance in using the BLS Internet site, send e-mail to (labstat.helpdesk@bls.gov). For Import/Export Price Index data requests, send e-mail to (mxpinfo@bls.gov).

Information from this release will be made available to sensory impaired individuals upon request. Voice phone: 202-691-5200; Federal Relay Service: 1-800-877-8339.