

Transmission of material in this release is embargoed until
8:30 a.m. (EST) Friday, November 14, 2014

USDL-14-2065

Technical information: (202) 691-7101 • MXPinfo@bls.gov • www.bls.gov/mxp
Media contact: (202) 691-5902 • PressOffice@bls.gov

U.S. IMPORT AND EXPORT PRICE INDEXES – OCTOBER 2014

The price index for U.S. imports decreased 1.3 percent in October following a 0.6-percent decline in September, the U.S. Bureau of Labor Statistics reported today. The October drop was mostly led by falling fuel prices. U.S. export prices declined 1.0 percent in October, after falling 0.4 percent in September and 0.5 percent in August.

Chart 1. One-month percent change in the Import Price Index: October 2013 – October 2014

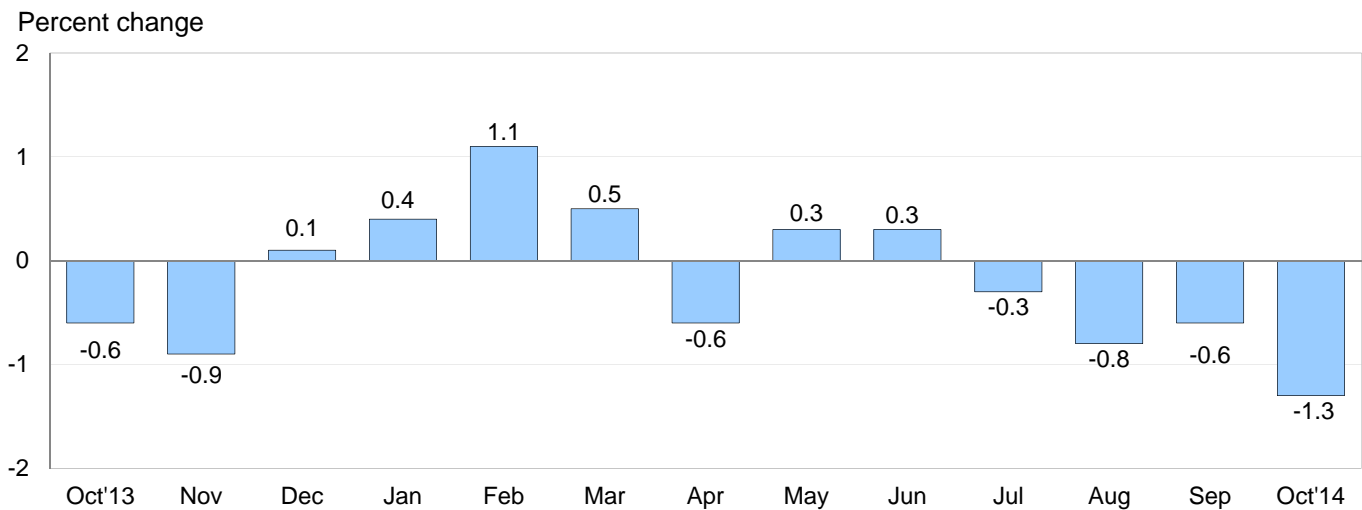
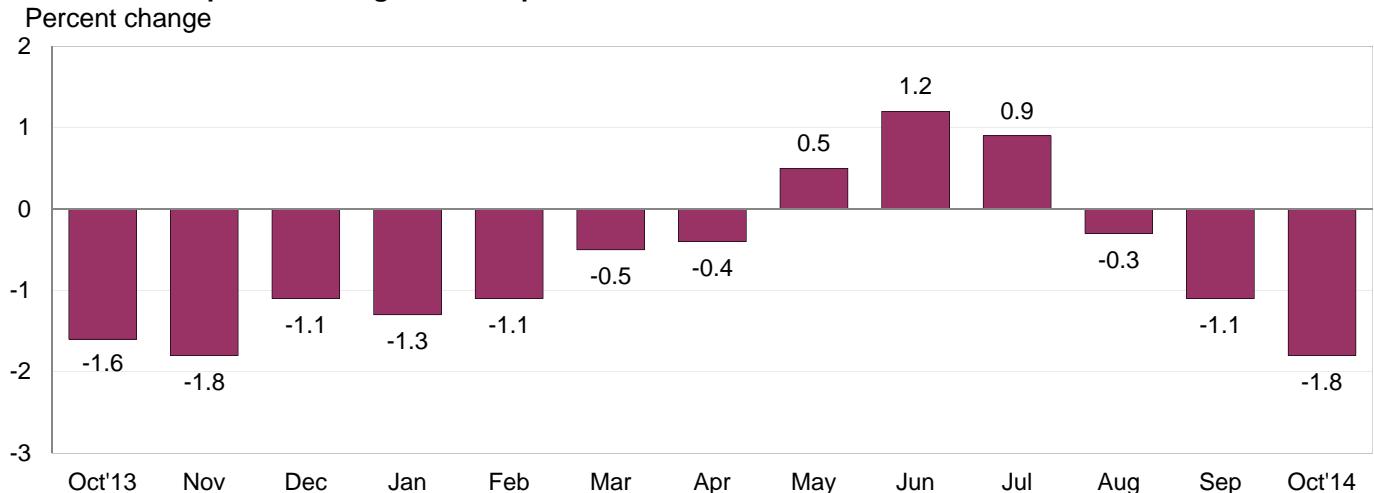


Chart 2. 12-month percent change in the Import Price Index: October 2013 – October 2014



All Imports: Import prices fell 1.3 percent in October, after decreasing 1.6 percent over the previous 3 months. The October decline was the largest monthly drop since a 2.3-percent decrease in June 2012. In October, the drop was led by lower fuel prices, although nonfuel prices fell as well. The price index for overall imports declined 1.8 percent over the past 12 months, the largest year-over-year drop since a 1.8-percent decrease in November 2013.

Fuel Imports: The price index for import fuel declined 6.5 percent in October following decreases in each of the previous 3 months. The October decline was the largest 1-month drop since the index fell 8.5 percent in June 2012. In October, a 6.9-percent decrease in petroleum prices led the decline in overall fuel prices. In contrast, natural gas prices rose 0.8 percent. Fuel prices also fell for the year ended in October, declining 10.1 percent. The price index for petroleum decreased 11.1 percent from October 2013 to October 2014, and natural gas prices increased 25.4 percent for the same period.

All Imports Excluding Fuel: Prices for nonfuel imports declined 0.2 percent in October, after edging down 0.1 percent the previous month. In October, lower prices for nonfuel industrial supplies and materials, consumer goods, and capital goods more than offset rising foods, feeds, and beverages prices. Despite the recent increases, nonfuel import prices increased 0.3 percent over the past year. Higher prices for foods, feeds, and beverages and consumer goods more than offset falling prices for automotive vehicles, capital goods, and nonfuel industrial supplies and materials.

Table A. Percent change in Import and Export Price Indexes, selected categories

Month	IMPORTS			EXPORTS		
	All imports	Fuel imports	Nonfuel imports	All exports	Agricultural exports	Non-agricultural exports
2013						
October.....	-0.6	-3.3	0.1	-0.6	-1.3	-0.5
November.....	-0.9	-4.2	0.0	0.2	-0.2	0.1
December.....	0.1	0.7	-0.1	0.4	0.3	0.4
2014						
January.....	0.4	0.8	0.3	0.3	0.0	0.4
February.....	1.1	5.9	0.0	0.8	1.4	0.6
March.....	0.5	1.0	0.3	0.9	2.8	0.7
April.....	-0.6	-2.6	0.0	-1.0	1.5	-1.2
May.....	0.3	1.2	0.0	0.1	0.3	0.0
June.....	0.3	1.6	-0.1	-0.5	-1.9	-0.3
July.....	-0.3	-1.5	0.1	0.1	-1.8	0.2 ^r
August.....	-0.8 ^r	-3.9 ^r	0.0	-0.5	-3.1 ^r	-0.2
September.....	-0.6 ^r	-2.6 ^r	-0.1	-0.4 ^r	-1.7 ^r	-0.2
October.....	-1.3	-6.5	-0.2	-1.0	-2.1	-0.9
Oct. 2012 to 2013.....	-1.6	-2.2	-1.3	-2.2	-5.9	-1.7
Oct. 2013 to 2014.....	-1.8	-10.1	0.3	-0.8	-4.6	-0.4

r Revised

Chart 3. One-month percent change in the Export Price Index: October 2013 – October 2014

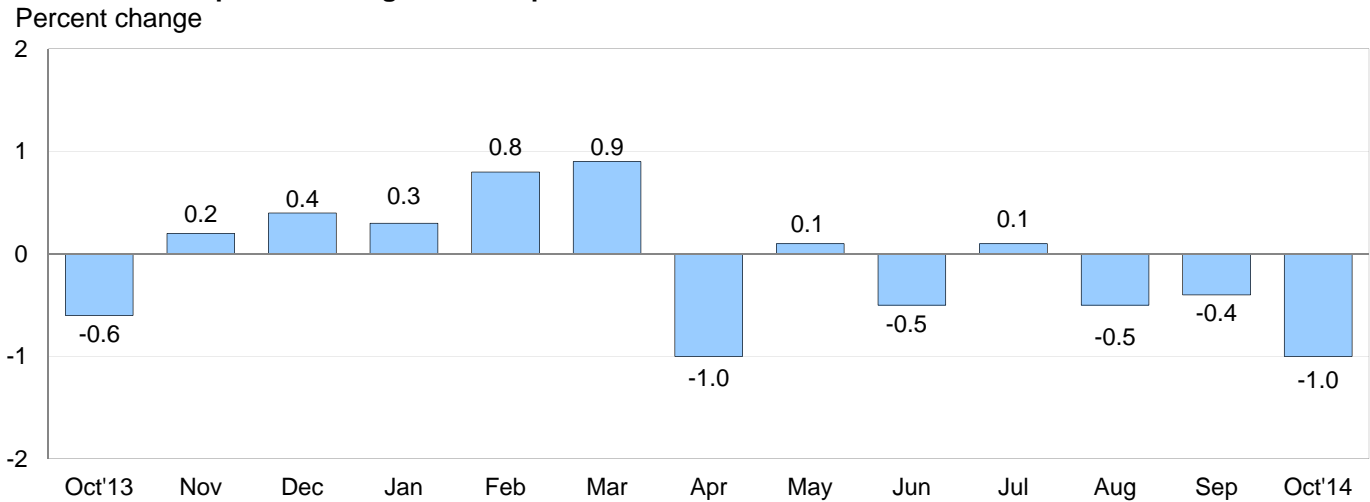
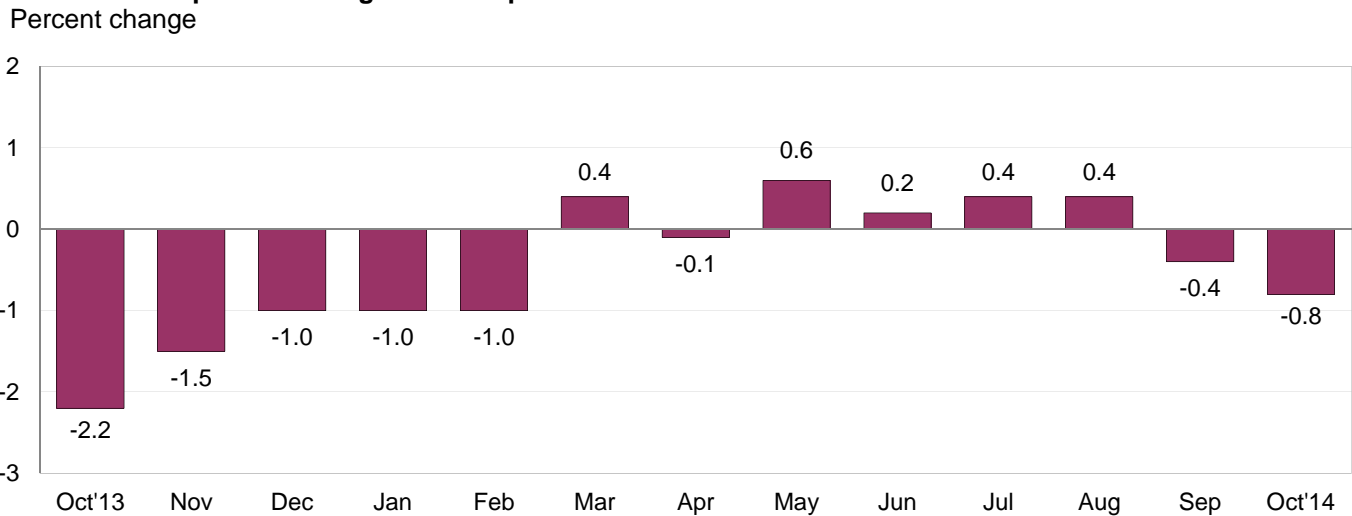


Chart 4. 12-month percent change in the Export Price Index: October 2013 – October 2014



All Exports: Overall export prices declined 1.0 percent in October. Other than a 1.0-percent decrease in April, that was the largest 1-month drop for the index since a 1.7-percent decline in June 2012. In October lower prices for agricultural exports and nonagricultural exports drove the decrease. Export prices also fell for the year ended in October, declining 0.8 percent, the largest 12-month drop since a 1.0-percent decrease between February 2013 and February 2014.

Agricultural Exports: The price index for agricultural exports fell 2.1 percent in October following a 1.7-percent decline in September. Lower prices for soybeans, wheat, and corn led the overall decline for both months. Agricultural prices fell 4.6 percent over the past 12 months, a decline also driven by falling grains prices.

All Exports Excluding Agriculture: Prices for nonagricultural exports decreased 0.9 percent in October, the largest monthly decrease since a 1.2-percent drop in April. Lower prices for nonagricultural industrial supplies and materials, capital goods, and consumer goods more than offset higher automotive vehicle prices. The price index for nonagricultural exports declined 0.4 percent over the past year, driven by decreasing prices for nonagricultural industrial supplies and materials which offset higher prices for each of the major finished goods areas.

SELECTED OCTOBER HIGHLIGHTS

Import Prices

Imports by Locality of Origin: Prices for imports from China ticked up 0.1 percent in October, after edging down 0.1 percent in September. Import prices from China rose 0.3 percent for the year ended in October following a 0.9-percent decline for the previous 12-month period. The price index for imports from Japan advanced 0.1 percent in October, led by a 0.7-percent rise in transportation equipment prices. Falling fuel prices drove down prices for imports from Canada, Mexico, and the European Union in October. Import prices from Canada fell 2.3 percent, prices for imports from Mexico declined 0.9 percent, and the price index for imports from the European Union decreased 0.2 percent.

Nonfuel Industrial Supplies and Materials: Nonfuel industrial supplies and materials prices fell 0.7 percent in October following a 0.4-percent drop the previous month. The October decline was driven by an 8.3-percent decrease in other precious metals prices and a 4.7-percent drop in gold prices.

Finished Goods: Finished goods prices declined overall in October. Consumer goods prices declined 0.2 percent and prices for capital goods edged down 0.1 percent. The price index for automotive vehicles recorded no change in October.

Foods, Feeds, and Beverages: Prices for foods, feeds, and beverages increased 1.4 percent in October, after ticking up 0.1 percent in September. The October advance was led by a 20.5-percent increase in vegetable prices.

Transportation Services: Import air passenger fares rose 2.4 percent in October, the first monthly advance since the index increased 6.9 percent in June. In October, a 2.3-percent rise in European fares, a 4.5-percent increase in Latin American/Caribbean fares, and a 1.4-percent advance in Asian fares all contributed to the overall rise. Import air passenger fares also increased over the past year, advancing 4.4 percent. The price index for import air freight declined 1.2 percent in October and 1.0 percent over the past 12 months.

Export Prices

Nonagricultural Industrial Supplies and Materials: Prices for nonagricultural industrial supplies and materials declined 2.0 percent in October, after a 0.6-percent decrease in September. Falling prices for fuel and metals led the drop. In October, fuel prices declined 4.6 percent and prices for metals decreased 3.5 percent.

Finished Goods: Finished goods prices were mixed in October. The price indexes for capital goods and consumer goods each declined, falling 0.2 percent and 0.3 percent, respectively. In contrast, automotive vehicle prices advanced 0.2 percent, led by a 0.3-percent increase in passenger car prices that were largely attributable to year-end model changeovers.

Transportation Services: In contrast to imports, export air passenger fares declined 2.2 percent in October, after an 11.4-percent decline the previous month. Both decreases were driven by lower Asian fares. The index for export air passenger fares increased 3.2 percent for the year ended in October. Export air freight prices declined 0.4 percent for the second consecutive month in October. Despite the recent drops, export air freight prices rose 7.4 percent over the past year.

Import and Export Price Index data for November 2014 are scheduled for release on Thursday, December 11, 2014 at 8:30 a.m. (EST).

Table 1. U.S. import price indexes and percent changes for selected categories of goods: October 2013 to October 2014

[2000=100, unless otherwise noted]

Description	End Use	Relative importance Sept. 2014 ¹	Index		Percent change				
			Sept. 2014	Oct. 2014	Annual Oct. 2013 to Oct. 2014	Monthly			
						June 2014 to July 2014	July 2014 to Aug. 2014	Aug. 2014 to Sept. 2014	Sept. 2014 to Oct. 2014
All commodities		100.000	138.2	136.4	-1.8	-0.3	-0.8	-0.6	-1.3
All imports excluding food and fuels (Dec. 2010=100)		75.630	102.2	102.0	0.1	0.0	0.0	-0.2	-0.2
All imports excluding petroleum		81.914	115.6	115.5	0.5	0.0	-0.1	-0.1	-0.1
All imports excluding fuels (Dec. 2001=100)		80.994	119.6	119.4	0.3	0.1	0.0	-0.1	-0.2
Foods, feeds, & beverages	0	5.364	179.9	182.5	3.7	1.1	0.6	0.1	1.4
Agricultural foods, feeds & beverages, excluding distilled beverages.....	00	4.086	197.2	200.7	4.7	1.3	0.8	-0.3	1.8
Nonagricultural foods (fish, distilled beverages).....	01	1.278	140.8	141.3	0.6	0.4	0.1	1.5	0.4
Industrial supplies & materials	1	32.107	242.8	232.9	-6.1	-0.7	-2.3	-1.7	-4.1
Industrial supplies & materials excluding petroleum.....		14.022	160.4	159.6	1.0	0.3	-0.6	-0.4	-0.5
Industrial supplies & materials excluding fuels (Dec. 2001=100).....		13.102	180.5	179.2	-0.1	0.5	0.1	-0.4	-0.7
Industrial supplies & materials, durable....		7.957	169.6	166.6	-0.7	1.1	0.1	-0.3	-1.8
Industrial supplies & materials nondurable excluding petroleum.....		5.145	149.0	150.6	3.0	-0.7	-1.4	-0.7	1.1
Fuels & lubricants.....	10	19.004	323.1	302.2	-10.1	-1.5	-3.9	-2.6	-6.5
Petroleum & petroleum products.....	100	18.084	358.6	333.9	-11.1	-1.5	-3.6	-2.6	-6.9
Crude.....	10000	13.796	372.6	344.3	-11.7	-1.3	-4.3	-2.3	-7.6
Fuels, n.e.s.-coals & gas.....	101	0.768	130.8	131.3	21.5	0.1	-10.2	-1.7	0.4
Gas-natural.....	10110	0.622	118.0	118.9	25.4	0.3	-12.4	-2.5	0.8
Paper & paper base stocks.....	11	0.541	113.2	112.9	-1.5	-0.1	0.4	-0.6	-0.3
Materials associated with nondurable supplies & materials.....	12	4.673	168.1	169.9	0.9	-0.6	0.1	-0.5	1.1
Selected building materials.....	13	1.055	142.5	141.6	-0.3	0.4	-0.1	0.3	-0.6
Unfinished metals related to durable goods.....	14	3.617	242.7	234.0	-2.0	2.2	-0.3	-0.6	-3.6
Finished metals related to durable goods.....	15	1.669	158.9	159.3	2.2	0.4	0.6	-0.4	0.3
Nonmetals related to durable goods.....	16	1.547	112.4	112.0	-0.4	0.0	0.4	0.0	-0.4
Capital goods	2	25.147	92.4	92.3	-0.1	0.0	0.0	-0.2	-0.1
Electric generating equipment.....	20	3.050	120.4	120.4	1.0	0.4	0.0	-0.1	0.0
Nonelectrical machinery.....	21	20.136	85.0	84.8	-0.4	0.0	-0.1	-0.1	-0.2
Transportation equipment excluding motor vehicles (Dec. 2001=100).....	22	1.960	136.7	136.6	0.4	0.3	0.4	0.0	-0.1
Automotive vehicles, parts & engines	3	13.604	112.6	112.6	-0.7	-0.6	0.1	-0.2	0.0
Consumer goods, excluding automotives	4	23.777	108.3	108.1	0.7	-0.1	0.0	0.0	-0.2
Nondurables, manufactured.....	40	11.532	118.8	118.6	2.1	0.2	0.1	0.0	-0.2
Durables, manufactured.....	41	11.038	97.4	97.1	-1.1	-0.2	-0.1	-0.1	-0.3
Nonmanufactured consumer goods.....	42	1.208	121.0	121.1	3.2	0.0	-0.4	0.2	0.1

¹ Relative importance figures are based on 2012 trade values.

NOTES: Data may be revised in each of the three months after original publication.

Dash = Not available

Table 2. U.S. export price indexes and percent changes for selected categories of goods: October 2013 to October 2014

[2000=100, unless otherwise noted]

Description	End Use	Relative importance Sept. 2014 ¹	Index		Percent change				
			Sept. 2014	Oct. 2014	Annual Oct. 2013 to Oct. 2014	Monthly			
						June 2014 to July 2014	July 2014 to Aug. 2014	Aug. 2014 to Sept. 2014	Sept. 2014 to Oct. 2014
All commodities		100.000	131.9	130.6	-0.8	0.1	-0.5	-0.4	-1.0
Agricultural commodities		9.584	207.2	202.8	-4.6	-1.8	-3.1	-1.7	-2.1
All exports excluding food and fuels (Dec. 2010=100)		81.506	102.3	101.9	0.0	0.1	0.0	-0.2	-0.4
Nonagricultural commodities		90.415	126.4	125.3	-0.4	0.2	-0.2	-0.2	-0.9
Foods, feeds, & beverages	0	8.867	209.7	205.2	-3.4	-1.4	-2.9	-1.5	-2.1
Agricultural foods, feeds & beverages, excluding distilled beverages.....	00	8.228	212.1	207.2	-3.9	-1.6	-3.3	-1.6	-2.3
Nonagricultural foods (fish, distilled beverages).....	01	0.639	192.5	191.2	1.8	2.0	1.5	0.1	-0.7
Industrial supplies & materials	1	33.181	175.6	172.2	-2.3	0.6	-0.7	-0.6	-1.9
Industrial supplies & materials, durable....		11.235	170.9	168.1	-2.6	1.2	-0.1	-0.8	-1.6
Industrial supplies & materials, nondurable.....		21.945	179.1	175.2	-2.1	0.2	-1.0	-0.5	-2.2
Agricultural industrial supplies & materials.....	10	1.356	185.7	183.5	-8.8	-2.8	-2.3	-1.6	-1.2
Nonagricultural industrial supplies & materials		31.824	175.5	172.0	-1.9	0.7	-0.6	-0.6	-2.0
Fuels & lubricants.....	11	9.626	250.5	239.0	-4.4	0.5	-2.5	-0.6	-4.6
Nonagricultural supplies & materials excluding fuels & building materials.....	12	21.217	166.8	165.3	-0.5	1.0	0.2	-0.6	-0.9
Selected building materials.....	13	0.981	121.7	121.5	-3.2	-1.8	-1.1	-0.4	-0.2
Capital goods	2	36.596	107.2	107.0	0.6	-0.3	0.1	-0.1	-0.2
Electrical generating equipment.....	20	3.722	116.0	115.3	0.4	0.0	0.0	0.1	-0.6
Nonelectrical machinery.....	21	25.818	95.4	95.2	0.0	-0.2	0.0	-0.1	-0.2
Transportation equipment excluding motor vehicles (Dec. 2001=100).....	22	7.057	156.4	156.4	3.0	-0.1	0.1	0.0	0.0
Automotive vehicles, parts & engines	3	9.528	114.0	114.2	0.5	0.1	-0.2	0.0	0.2
Consumer goods, excluding automotives	4	11.828	115.2	114.9	0.3	0.3	0.1	-0.3	-0.3
Nondurables, manufactured.....	40	5.449	112.2	111.8	-2.0	1.3	0.1	-0.3	-0.4
Durables, manufactured.....	41	4.984	111.7	111.5	-0.1	-0.3	-0.1	-0.2	-0.2

¹ Relative importance figures are based on 2012 trade values.

NOTES: Data may be revised in each of the three months after original publication.

Dash = Not available

Table 3. U.S. import price indexes and percent changes for selected categories of goods: October 2013 to October 2014

[December 2005=100, unless otherwise noted]

Description	NAICS	Relative importance Sept. 2014 ¹	Index		Percent change				
			Sept. 2014	Oct. 2014	Annual	Monthly			
					Oct. 2013 to Oct. 2014	June 2014 to July 2014	July 2014 to Aug. 2014	Aug. 2014 to Sept. 2014	Sept. 2014 to Oct. 2014
Nonmanufactured articles.....		16.726	163.1	153.9	-8.3	-0.8	-4.1	-2.0	-5.6
Agriculture, forestry, fishing and hunting.....	11	1.821	177.9	186.1	7.1	2.2	0.0	0.0	4.6
Crop production.....	111	1.390	185.1	196.9	9.4	2.3	-0.2	0.5	6.4
Forestry and logging (Dec. 2012=100).....	113	0.128	72.4	68.8	-26.6	-2.2	-2.9	-5.2	-5.0
Mining.....	21	14.905	161.2	150.0	-10.1	-1.1	-4.6	-2.2	-6.9
Mining (except oil and gas) (Dec. 2006=100).....	212	0.249	122.4	118.2	-8.7	-0.3	-0.2	-0.5	-3.4
Manufactured articles.....		82.877	116.1	115.7	-0.2	-0.2	0.0	-0.3	-0.3
Manufactured goods, part 1.....	31	10.702	126.7	126.5	1.7	0.5	0.4	0.2	-0.2
Food manufacturing.....	311	3.151	162.1	161.2	2.1	0.8	0.9	-0.1	-0.6
Beverage and tobacco product manufacturing.....	312	0.949	117.6	117.6	2.9	1.6	0.1	0.1	0.0
Textile mills (Dec. 2011=100).....	313	0.361	102.7	103.5	2.5	0.4	0.3	0.0	0.8
Textile product mills.....	314	0.769	114.2	113.8	-0.8	0.0	0.0	-0.1	-0.4
Apparel manufacturing.....	315	3.798	112.1	112.0	1.4	0.2	0.4	0.4	-0.1
Leather and allied product manufacturing.....	316	1.673	123.7	123.9	1.9	0.2	0.2	-0.1	0.2
Manufactured goods, part 2.....	32	17.477	135.8	134.8	-0.8	-0.9	-0.2	-1.2	-0.7
Wood product manufacturing.....	321	0.636	122.1	120.9	-0.6	0.9	-0.2	0.5	-1.0
Paper manufacturing.....	322	0.991	111.1	110.9	-0.3	0.3	0.3	-0.3	-0.2
Printing and related support activities (Dec. 2013=100).....	323	0.189	99.8	99.8	-	0.0	0.1	0.1	0.0
Petroleum and coal products manufacturing.....	324	3.896	153.2	145.6	-9.1	-2.4	-1.2	-4.2	-5.0
Chemical manufacturing.....	325	8.978	136.7	137.7	3.1	-0.4	0.1	-0.4	0.7
Plastics and rubber products manufacturing.....	326	1.943	121.8	121.9	-1.9	-0.9	-0.1	0.1	0.1
Nonmetallic mineral product manufacturing.....	327	0.844	130.4	130.5	0.5	-0.2	0.0	0.0	0.1
Manufactured goods, part 3.....	33	54.699	108.0	107.6	-0.4	-0.1	0.0	-0.1	-0.4
Primary metal manufacturing.....	331	4.245	159.7	155.4	-0.8	2.1	-0.1	-0.8	-2.7
Fabricated metal product manufacturing.....	332	2.717	127.7	127.8	1.3	0.1	0.4	0.2	0.1
Machinery manufacturing.....	333	6.935	121.2	120.7	-0.2	-0.2	0.0	-0.2	-0.4
Computer and electronic product manufacturing.....	334	16.018	79.7	79.6	-1.1	-0.4	-0.1	-0.1	-0.1
Electrical equipment, appliance, and component manufacturing.....	335	4.150	119.3	119.2	0.1	0.3	0.3	-0.1	-0.1
Transportation equipment manufacturing.....	336	14.493	111.4	111.4	-0.3	-0.4	0.1	-0.1	0.0
Furniture and related product manufacturing.....	337	1.377	116.7	116.7	1.9	0.3	0.3	0.1	0.0
Miscellaneous manufacturing.....	339	4.764	122.2	121.7	0.6	0.3	-0.1	-0.2	-0.4

¹ Relative importance figures are based on 2012 trade values.

NOTES: Data may be revised in each of the three months after original publication.

Dash = Not available

Table 4. U.S. export price indexes and percent changes for selected categories of goods: October 2013 to October 2014

[December 2005=100, unless otherwise noted]

Description	NAICS	Relative importance Sept. 2014 ¹	Index		Percent change				
			Sept. 2014	Oct. 2014	Annual	Monthly			
					Oct. 2013 to Oct. 2014	June 2014 to July 2014	July 2014 to Aug. 2014	Aug. 2014 to Sept. 2014	Sept. 2014 to Oct. 2014
Nonmanufactured articles.....		6.726	148.3	143.6	-9.6	-4.1	-4.4	-1.5	-3.2
Agriculture, forestry, fishing and hunting.....	11	4.534	176.1	168.5	-13.2	-4.3	-5.2	-1.9	-4.3
Crop production.....	111	4.321	182.8	174.4	-13.0	-4.4	-5.3	-2.0	-4.6
Mining.....	21	2.192	88.1	87.5	-1.0	-3.8	-2.7	-0.8	-0.7
Mining (except oil and gas).....	212	1.324	97.6	96.0	-5.3	-0.8	0.7	-1.0	-1.6
Manufactured articles.....		91.321	120.3	119.4	-0.5	0.3	-0.3	-0.2	-0.7
Manufactured goods, part 1.....	31	7.241	155.9	155.1	2.7	0.6	-0.9	-1.0	-0.5
Food manufacturing.....	311	5.153	181.6	180.7	4.1	1.0	-1.0	-1.1	-0.5
Beverage and tobacco product manufacturing.....	312	0.494	110.5	107.9	-12.1	-2.7	-2.4	-1.5	-2.4
Leather and allied product manufacturing (Dec. 2013=100).....	316	0.301	109.2	109.0	-	1.6	0.2	0.2	-0.2
Manufactured goods, part 2.....	32	26.184	131.0	128.6	-2.8	0.7	-0.5	-0.4	-1.8
Wood product manufacturing.....	321	0.468	125.4	125.4	2.3	-0.2	-0.1	1.0	0.0
Paper manufacturing.....	322	1.847	125.3	125.8	3.0	0.9	0.9	-0.7	0.4
Petroleum and coal products manufacturing.....	324	7.138	159.2	149.6	-7.4	1.4	-2.6	-0.6	-6.0
Chemical manufacturing.....	325	13.480	128.1	127.6	-1.6	0.5	0.2	-0.4	-0.4
Plastics and rubber products manufacturing.....	326	2.185	119.2	119.1	-1.0	-0.3	0.3	0.0	-0.1
Nonmetallic mineral product manufacturing.....	327	0.780	113.2	113.0	1.0	0.0	-0.1	0.0	-0.2
Manufactured goods, part 3.....	33	57.896	112.7	112.4	0.2	0.2	-0.1	-0.2	-0.3
Primary metal manufacturing.....	331	4.710	148.5	144.8	-4.0	3.1	-0.4	-1.2	-2.5
Fabricated metal product manufacturing... ..	332	2.729	127.9	128.0	-2.4	0.4	-0.2	-0.1	0.1
Machinery manufacturing.....	333	11.815	123.8	123.7	0.8	-0.2	0.0	-0.1	-0.1
Computer and electronic product manufacturing.....	334	13.845	87.4	87.0	-1.1	-0.6	0.1	-0.2	-0.5
Electrical equipment, appliance, and component manufacturing.....	335	3.508	114.7	115.0	0.8	0.0	0.0	-0.1	0.3
Transportation equipment manufacturing..	336	15.790	119.9	120.0	1.5	0.1	-0.1	0.0	0.1
Furniture and related product manufacturing (Dec. 2011=100).....	337	0.368	108.7	109.3	1.7	0.1	0.9	-0.3	0.6
Miscellaneous manufacturing.....	339	5.131	125.3	124.8	3.0	-0.3	0.2	0.1	-0.4

¹ Relative importance figures are based on 2012 trade values.

NOTES: Data may be revised in each of the three months after original publication.

Dash = Not available

Table 5. U.S. import price indexes and percent changes for selected categories of goods: October 2013 to October 2014

[2000=100, unless otherwise noted]

Description	Harmonized system	Relative importance Sept. 2014 ¹	Index		Percent change				
			Sept. 2014	Oct. 2014	Annual	Monthly			
					Oct. 2013 to Oct. 2014	June 2014 to July 2014	July 2014 to Aug. 2014	Aug. 2014 to Sept. 2014	Sept. 2014 to Oct. 2014
Live animals; animal products.....	I	1.357	203.2	203.7	7.3	1.8	1.3	0.6	0.2
Meat and edible meat offal.....	02	0.328	272.9	268.1	19.7	5.2	2.9	0.1	-1.8
Fish and crustaceans, molluscs and other aquatic invertebrates.....	03	0.700	140.3	141.7	-2.6	-0.9	-0.7	1.6	1.0
Vegetable products.....	II	1.661	199.5	210.1	4.7	1.2	-0.1	0.4	5.3
Edible vegetables, roots, and tubers.....	07	0.399	373.6	462.0	19.5	3.2	-2.1	4.5	23.7
Edible fruit and nuts; peel of citrus fruit or melons.....	08	0.404	99.5	95.3	-13.8	-3.2	3.8	-2.1	-4.2
Coffee, tea, mate and spices.....	09	0.360	254.2	262.9	18.1	3.8	1.4	0.4	3.4
Animal or vegetable fats and oils (Dec. 2009=100).....	III	0.240	110.5	112.2	-3.0	0.4	0.7	-5.6	1.5
Prepared foodstuffs, beverages, and tobacco.....	IV	2.562	163.6	162.6	2.1	0.6	0.6	0.0	-0.6
Sugars and sugar confectionary (Dec. 2012=100).....	17	0.171	90.5	89.7	0.2	-2.3	1.6	-1.2	-0.9
Cocoa and cocoa preparations (Dec. 2009=100).....	18	0.258	116.8	118.5	16.2	0.4	2.3	-0.3	1.5
Preparations of cereals, flour, starch or milk; bakers' wares (Dec. 2007=100).....	19	0.250	133.1	133.7	2.3	0.5	0.6	0.3	0.5
Preparations of vegetables, fruit, nuts, or other parts of plants.....	20	0.306	167.4	163.6	-1.0	-0.9	-0.6	0.2	-2.3
Beverages, spirits, and vinegar.....	22	0.962	128.0	128.2	2.7	1.6	0.3	-0.2	0.2
Mineral products.....	V	18.905	325.6	304.3	-10.0	-1.5	-3.9	-2.6	-6.5
Mineral fuels, oils and residuals, bituminous substances and mineral waxes.....	27	18.649	322.8	301.6	-10.0	-1.5	-3.9	-2.6	-6.6
Products of the chemical or allied industries.....	VI	8.201	151.9	152.6	3.0	-0.1	-0.1	-0.3	0.5
Inorganic chemicals.....	28	0.622	312.8	332.5	7.1	-5.0	-0.5	1.7	6.3
Organic chemicals.....	29	2.414	135.3	134.2	-0.7	1.0	-0.1	-0.7	-0.8
Pharmaceutical products.....	30	3.385	133.8	133.4	6.1	0.1	-0.1	-0.3	-0.3
Fertilizers (Dec. 2009=100).....	31	0.317	108.6	117.6	10.9	-1.1	-0.8	2.3	8.3
Tanning extracts; dye, pigments, varnish, paints & putty (Dec. 2011=100).....	32	0.182	105.3	106.5	13.2	1.4	2.6	0.0	1.1
Miscellaneous chemical products.....	38	0.468	93.2	93.2	-4.7	-0.4	0.0	0.0	0.0
Plastics and articles thereof; rubber and articles thereof.....	VII	3.146	146.1	146.2	-2.1	-0.6	-0.1	-0.5	0.1
Plastics and articles thereof.....	39	2.032	149.5	150.2	1.3	0.2	0.0	-0.4	0.5
Rubber and articles thereof.....	40	1.114	141.6	140.6	-7.8	-1.9	-0.5	-0.8	-0.7
Raw hides, skins, leather, furskins, travel goods, etc.....	VIII	0.621	128.1	128.1	1.9	0.2	-0.1	0.2	0.0
Articles of leather; travel goods, bags, etc. of various materials.....	42	0.585	130.5	130.6	2.8	0.2	0.0	0.1	0.1
Wood, wood charcoal, cork, straw, basketware and wickerwork.....	IX	0.666	147.9	146.6	-0.5	0.9	-0.3	0.4	-0.9
Woodpulp, recovered paper, and paper products.....	X	1.048	113.3	113.0	-1.2	0.0	0.1	-0.4	-0.3
Paper and paperboard; articles of paper pulp, paper or paperboard.....	48	0.691	107.0	107.0	-0.9	0.0	0.0	-0.2	0.0
Printed matter (Dec. 2013=100).....	49	0.196	99.9	99.8	-	0.0	0.1	0.0	-0.1
Textile and textile articles.....	XI	4.799	115.0	115.0	1.0	0.2	0.2	0.4	0.0
Articles of apparel and clothing accessories, knitted or crocheted.....	61	1.875	103.9	104.0	1.2	0.0	0.0	1.0	0.1

See footnotes at end of table.

Table 5. U.S. import price indexes and percent changes for selected categories of goods: October 2013 to October 2014 — Continued
 [2000=100, unless otherwise noted]

Description	Harmonized system	Relative importance Sept. 2014 ¹	Index		Percent change				
			Sept. 2014	Oct. 2014	Annual	Monthly			
					Oct. 2013 to Oct. 2014	June 2014 to July 2014	July 2014 to Aug. 2014	Aug. 2014 to Sept. 2014	Sept. 2014 to Oct. 2014
Articles of apparel and clothing accessories, not knitted or crocheted.....	62	1.747	120.3	120.2	1.3	0.4	0.6	0.0	-0.1
Made-up or worn textile articles.....	63	0.553	107.7	107.3	-0.6	0.0	-0.1	-0.2	-0.4
Headgear, umbrellas, artificial flowers, etc...	XII	1.344	122.3	122.5	1.2	0.2	0.2	0.0	0.2
Footwear and parts of such articles.....	64	1.159	121.6	121.8	1.4	0.1	0.2	-0.1	0.2
Stone, plaster, cement, asbestos, ceramics, glass etc.....	XIII	0.781	133.1	133.0	0.0	-0.2	0.1	0.0	-0.1
Articles of stone, plaster, cement, asbestos, or mica (Dec. 2001=100).....	68	0.258	126.1	126.1	-0.1	-0.6	0.2	0.2	0.0
Ceramic products.....	69	0.241	141.6	141.7	0.6	0.0	0.1	-0.1	0.1
Glass and glassware.....	70	0.283	129.5	129.3	-0.2	0.0	-0.1	0.0	-0.2
Pearls, stones, precious metals, imitation jewelry, and coins.....	XIV	2.669	182.0	175.9	-3.9	3.1	-0.9	-1.2	-3.4
Base metals and articles of base metals. ...	XV	5.456	184.9	183.0	1.9	0.4	0.4	0.2	-1.0
Iron and steel.....	72	1.289	223.5	221.5	2.9	0.5	-0.4	0.3	-0.9
Articles of iron or steel.....	73	1.714	155.9	155.7	1.6	0.5	0.4	0.3	-0.1
Copper and articles thereof.....	74	0.441	327.7	325.1	-3.1	-0.7	2.7	-1.8	-0.8
Aluminum and articles thereof.....	76	0.752	144.8	142.4	4.9	0.6	1.6	0.6	-1.7
Tools, implements, cutlery, spoons and forks, of base metal; parts thereof.....	82	0.396	129.0	129.1	-0.2	0.0	0.0	-0.1	0.1
Miscellaneous articles of base metal.....	83	0.453	138.4	137.7	1.8	0.1	1.0	0.1	-0.5
Machinery, electrical equipment, TV image and sound recorders, parts, etc.....	XVI	27.281	84.3	84.1	-0.6	-0.2	0.0	-0.1	-0.2
Machinery and mechanical appliances; parts thereof.....	84	14.201	89.5	89.3	-0.1	-0.1	0.0	-0.1	-0.2
Electrical machinery and equip, sound and TV recorders & reproducers, parts.....	85	13.080	79.3	79.1	-1.0	-0.4	-0.1	-0.1	-0.3
Vehicles, aircraft, vessels and associated transport equipment.....	XVII	12.119	115.4	115.6	-0.3	-0.5	0.0	-0.1	0.2
Motor vehicles and their parts.....	87	11.093	114.1	114.3	-0.3	-0.6	0.0	-0.1	0.2
Aircraft, spacecraft, and parts thereof (Dec. 2002=100).....	88	0.924	120.2	120.2	-0.1	0.2	0.0	0.1	0.0
Optical, photo, measuring, medical & musical instruments; & timepieces.....	XVIII	3.462	104.5	104.1	-0.1	-0.2	0.2	-0.4	-0.4
Optical, photographic, measuring and medical instruments.....	90	3.162	101.3	101.0	-0.1	-0.2	0.2	-0.4	-0.3
Clocks and watches and parts thereof.....	91	0.243	143.1	141.0	-0.3	-0.4	0.1	-0.2	-1.5
Miscellaneous manufactured articles.....	XX	3.599	114.0	114.0	0.6	0.4	0.1	0.0	0.0
Furniture & stuffed furnishings; lamps & lighting fittings, nesoi; prefab bldgs.....	94	2.099	118.4	118.5	1.1	0.6	0.1	-0.1	0.1
Toys, games and sports equipment; parts and accessories thereof.....	95	1.266	106.0	106.0	0.6	0.2	0.0	0.1	0.0
Miscellaneous manufactured articles.....	96	0.234	134.9	134.8	-2.7	-0.3	0.0	-0.1	-0.1

¹ Relative importance figures are based on 2012 trade values.

NOTES: Data may be revised in each of the three months after original publication.

Dash = Not available

Table 6. U.S. export price indexes and percent changes for selected categories of goods: October 2013 to October 2014

[2000=100, unless otherwise noted]

Description	Harmoni- zied system	Relative importance Sept. 2014 ¹	Index		Percent change				
			Sept. 2014	Oct. 2014	Annual Oct. 2013 to Oct. 2014	Monthly			
						June 2014 to July 2014	July 2014 to Aug. 2014	Aug. 2014 to Sept. 2014	Sept. 2014 to Oct. 2014
Live animals; animal products.....	I	2.251	246.9	246.8	11.1	3.9	-0.5	-1.4	0.0
Meat & edible meat offal (Dec. 2006=100)...	02	1.364	195.5	198.0	19.1	5.3	0.6	-2.3	1.3
Fish and crustaceans, molluscs and other aquatic invertebrates.....	03	0.374	212.8	208.2	4.2	3.1	2.4	0.6	-2.2
Vegetable products.....	II	4.261	226.1	218.3	-10.3	-3.9	-5.4	-1.5	-3.4
Edible fruit and nuts; peel of citrus fruit or melons.....	08	1.118	172.9	190.0	15.6	-3.5	-1.5	4.5	9.9
Cereals.....	10	1.005	219.6	207.6	-17.7	-3.9	-4.8	-2.7	-5.5
Oilseeds and misc. grains, seeds, fruits, plants, straw and fodder.....	12	1.706	245.5	215.3	-19.8	-4.6	-7.9	-5.0	-12.3
Animal or vegetable fats and oils (Dec. 2009=100).....	III	0.236	107.3	106.1	-12.6	-1.3	-2.0	-4.5	-1.1
Prepared foodstuffs, beverages, and tobacco.....	IV	2.865	163.3	161.2	-2.8	-1.4	-1.9	-0.5	-1.3
Preparations of vegetables, fruit, nuts or other parts of plants (Dec. 2009=100).....	20	0.351	117.7	117.7	4.5	-0.8	0.0	-0.3	0.0
Beverages, spirits, and vinegar (Dec. 2008=100).....	22	0.486	110.7	109.9	-2.6	0.1	0.1	-0.2	-0.7
Residues and waste from the food industries; prepared animal feed.....	23	0.666	241.8	231.0	-12.9	-5.5	-7.0	-1.6	-4.5
Mineral products.....	V	9.341	287.8	274.3	-6.2	0.3	-2.5	-0.6	-4.7
Ores, slag and ash (Dec. 2012=100).....	26	0.459	97.8	95.5	4.4	1.7	2.7	-1.4	-2.4
Mineral fuels, oils and residuals, bituminous substances and mineral waxes.....	27	8.702	283.8	269.9	-6.7	0.3	-2.8	-0.6	-4.9
Products of the chemical or allied industries.....	VI	10.914	150.0	149.1	-1.8	0.6	-0.1	-0.3	-0.6
Inorganic chemicals.....	28	0.884	172.0	174.6	-2.2	-0.6	0.2	0.6	1.5
Organic chemicals.....	29	3.220	167.1	164.8	1.8	3.9	-0.1	-1.2	-1.4
Pharmaceutical products.....	30	2.590	115.5	114.5	-5.2	0.2	0.0	-0.4	-0.9
Fertilizers (Dec. 2012=100).....	31	0.311	86.3	82.8	-3.7	1.4	0.7	-0.2	-4.1
Essential oils and resinoids; perfumery cosmetic or toilet preparations.....	33	0.710	133.1	133.1	-1.7	0.1	0.0	-0.4	0.0
Soap; lubricants; waxes, polishing or scouring products; candles, pastes.....	34	0.457	117.8	118.1	-2.7	-3.2	0.5	0.4	0.3
Miscellaneous chemical products.....	38	1.768	153.4	153.7	-0.7	-2.6	-0.7	1.0	0.2
Plastics and articles thereof; rubber and articles thereof.....	VII	5.253	151.0	151.0	0.7	-0.1	0.6	-0.1	0.0
Plastics and articles thereof.....	39	4.276	146.1	146.1	1.0	0.0	0.6	0.0	0.0
Rubber and articles thereof.....	40	0.977	171.5	171.6	-0.5	-0.6	0.2	-0.7	0.1
Raw hides, skins, leather, furskins, travel goods, etc.....	VIII	0.466	164.1	163.9	12.5	1.6	0.9	0.6	-0.1
Woodpulp, recovered paper, and paper products.....	X	2.303	125.3	125.9	2.6	1.4	0.9	-1.0	0.5
Woodpulp and recovered paper.....	47	0.690	129.8	129.2	1.4	2.6	1.4	-1.6	-0.5
Paper and paperboard; articles of paper pulp, paper or paperboard.....	48	1.178	123.9	125.0	3.6	1.1	0.6	-1.3	0.9
Textile and textile articles.....	XI	1.855	128.8	128.8	-2.4	-0.9	-1.2	-0.7	0.0
Cotton, including yarns and woven fabrics thereof.....	52	0.539	131.5	131.4	-11.7	-3.2	-4.0	-2.3	-0.1
Stone, plaster, cement, asbestos, ceramics, glass etc.....	XIII	0.750	120.1	120.0	1.2	0.0	-0.1	0.0	-0.1
Glass and glassware.....	70	0.384	98.6	98.4	1.0	0.0	-0.1	0.0	-0.2

See footnotes at end of table.

Table 6. U.S. export price indexes and percent changes for selected categories of goods: October 2013 to October 2014 — Continued
 [2000=100, unless otherwise noted]

Description	Harmonized system	Relative importance Sept. 2014 ¹	Index		Percent change				
			Sept. 2014	Oct. 2014	Annual	Monthly			
					Oct. 2013 to Oct. 2014	June 2014 to July 2014	July 2014 to Aug. 2014	Aug. 2014 to Sept. 2014	Sept. 2014 to Oct. 2014
Pearls, stones, precious metals, imitation jewelry, and coins.....	XIV	4.438	248.1	241.5	-1.9	2.7	-0.4	-1.3	-2.7
Base metals and articles of base metals. ...	XV	5.347	164.3	162.3	-1.7	1.0	0.1	-0.4	-1.2
Iron and steel.....	72	1.421	189.3	189.5	2.4	-0.8	0.7	-1.2	0.1
Copper and articles thereof.....	74	0.598	225.1	206.8	-13.0	3.1	-0.9	-2.0	-8.1
Aluminum and articles thereof.....	76	0.880	126.0	124.5	3.1	3.5	1.7	-0.1	-1.2
Tools, implements, cutlery, spoons and forks, of base metal; parts thereof.....	82	0.398	136.4	136.4	1.3	0.6	-1.0	-1.2	0.0
Miscellaneous articles of base metal.....	83	0.314	147.1	147.1	-0.1	0.0	0.0	0.0	0.0
Machinery, electrical equipment, TV image and sound recorders, parts, etc.....	XVI	27.971	97.2	97.0	0.1	-0.3	0.0	-0.1	-0.2
Machinery and mechanical appliances; parts thereof.....	84	16.943	112.8	112.8	1.3	-0.1	-0.1	0.1	0.0
Electrical machinery and equipment and parts and accessories thereof.....	85	11.028	80.4	79.9	-1.6	-0.5	0.0	-0.2	-0.6
Vehicles, aircraft, vessels and associated transport equipment.....	XVII	13.556	129.9	130.1	1.2	0.0	-0.1	0.0	0.2
Motor vehicles and their parts.....	87	8.817	115.0	115.2	0.8	0.0	-0.1	-0.1	0.2
Optical, photo, measuring, medical & musical instruments; & timepieces.....	XVIII	6.072	108.0	107.8	0.7	-0.1	0.4	0.0	-0.2
Miscellaneous manufactured articles.....	XX	1.427	110.6	111.3	1.0	0.0	0.5	-0.4	0.6
Furniture; stuffed furnishings; lamps and lighting fittings nesoi;.....	94	0.792	122.1	123.4	1.1	0.0	1.0	-0.7	1.1
Toys, games and sports equipment; parts and accessories thereof.....	95	0.480	89.5	89.6	1.0	0.0	0.0	0.0	0.1

¹ Relative importance figures are based on 2012 trade values.

NOTES: Data may be revised in each of the three months after original publication.

Dash = Not available

Table 7. U.S. import price indexes and percent changes by locality of origin: October 2013 to October 2014
 [2000=100, unless otherwise noted]

Description	Relative importance Sept. 2014 ¹	Index		Percent change				
		Sept. 2014	Oct. 2014	Annual	Monthly			
				Oct. 2013 to Oct. 2014	June 2014 to July 2014	July 2014 to Aug. 2014	Aug. 2014 to Sept. 2014	Sept. 2014 to Oct. 2014
Industrialized Countries²	100.000	131.7	130.4	-0.5	-0.1	-0.7	-0.7	-1.0
Nonmanufactured articles.....	12.171	233.2	219.9	-5.4	-1.9	-7.7	-0.2	-5.7
Manufactured articles.....	87.236	123.5	123.2	0.2	0.1	0.2	-0.7	-0.2
Other Countries³	100.000	136.9	134.9	-2.7	-0.3	-0.6	-0.5	-1.5
Nonmanufactured articles.....	19.450	333.9	314.2	-10.0	-0.6	-2.8	-2.1	-5.9
Manufactured articles.....	80.307	109.5	109.1	-0.7	-0.3	0.1	-0.2	-0.4
Canada	100.000	151.1	147.6	-1.9	-0.6	-2.4	-0.5	-2.3
Nonmanufactured articles.....	31.767	225.6	212.3	-4.7	-2.1	-7.8	0.0	-5.9
Manufactured articles.....	67.329	135.1	134.3	-0.8	0.2	0.3	-0.7	-0.6
European Union⁴	100.000	138.3	138.0	1.2	0.1	0.2	-0.9	-0.2
Manufactured articles.....	99.303	134.5	134.2	1.2	0.2	0.1	-0.9	-0.2
France (Dec. 2003=100)	100.000	123.1	123.4	1.1	-0.2	0.1	-0.1	0.2
Germany (Dec. 2003=100)	100.000	118.4	118.0	0.6	-0.8	0.0	-0.5	-0.3
United Kingdom (Dec. 2003=100)	100.000	131.8	131.0	1.7	0.7	-0.1	-0.2	-0.6
Latin America⁵	100.000	168.7	165.8	-4.7	-0.6	-1.0	-1.1	-1.7
Nonmanufactured articles.....	27.949	346.2	330.3	-11.3	-1.8	-3.7	-2.6	-4.6
Manufactured articles.....	71.646	129.5	128.7	-1.8	-0.2	0.1	-0.5	-0.6
Mexico (Dec. 2003=100)	100.000	140.0	138.7	-2.6	-0.4	-0.2	-0.8	-0.9
Nonmanufactured articles (Dec. 2008=100).....	16.153	186.4	179.8	-9.3	-2.9	-2.3	-2.5	-3.5
Manufactured articles (Dec. 2008=100)...	83.592	92.5	92.1	-1.2	0.1	0.2	-0.5	-0.4
Pacific Rim (Dec. 2003=100)⁶	100.000	102.3	102.4	-0.7	-0.2	0.0	-0.2	0.1
China (Dec. 2003=100)	100.000	103.8	103.9	0.3	-0.2	0.0	-0.1	0.1
Japan	100.000	98.5	98.6	-1.1	-0.3	0.0	-0.1	0.1
Asian NICs⁷	100.000	89.4	89.4	-1.3	0.0	0.3	0.2	0.0
ASEAN (Dec. 2003=100)⁸	100.000	102.4	102.7	-2.1	-0.2	0.0	-1.3	0.3
Asia Near East (Dec. 2003=100)⁹	100.000	265.1	248.9	-4.9	2.1	-1.5	-0.9	-6.1

¹ Relative importance figures are based on 2012 trade values.

² Western Europe, Canada, Japan, Australia, New Zealand and South Africa.

³ Eastern Europe, Latin America, OPEC countries, and other countries in Asia, Africa and the Western Hemisphere.

⁴ European Union countries.

⁵ Mexico, Central America, South America and the Caribbean.

⁶ China, Japan, Australia, Brunei, Indonesia, Macao, Malaysia, New Zealand, Papua New Guinea, Philippines and the Asian Newly Industrialized Countries.

⁷ Asian Newly Industrialized Countries - Hong Kong, Singapore, South Korea and Taiwan.

⁸ Association of Southeast Asian Nations - Brunei, Cambodia, Indonesia, Laos, Malaysia, Myanmar, Philippines, Singapore, Thailand and Vietnam.

⁹ Bahrain, Iran, Iraq, Israel, Jordan, Kuwait, Lebanon, Oman, Qatar, Saudi Arabia, Syria, United Arab Emirates and Yemen.

NOTES: Data may be revised in each of the three months after original publication.

Regions are not mutually exclusive.

Dash = Not available

Table 8. U.S. international price indexes and percent changes for selected transportation services: October 2013 to October 2014

[2000=100, unless otherwise noted]

Description	Relative importance Sept. 2014 ¹	Index		Percent change				
		Sept. 2014	Oct. 2014	Annual	Monthly			
				Oct. 2013 to Oct. 2014	June 2014 to July 2014	July 2014 to Aug. 2014	Aug. 2014 to Sept. 2014	Sept. 2014 to Oct. 2014
Air Freight								
Import Air Freight	100.000	174.6	172.5	-1.0	-0.2	0.3	-0.7	-1.2
Europe (Dec. 2003=100).....	28.153	176.4	171.6	1.7	-0.6	-0.3	-1.6	-2.7
Asia.....	68.664	151.4	150.4	-1.8	-0.1	0.6	-0.4	-0.7
Export Air Freight	100.000	159.5	158.8	7.4	-0.2	0.1	-0.4	-0.4
Europe (Dec. 2006=100).....	35.662	143.0	143.0	7.4	-0.1	0.2	-0.2	0.0
Inbound Air Freight	100.000	164.4	163.1	0.2	0.0	0.1	-0.6	-0.8
Europe (Dec. 2003=100).....	27.241	157.5	154.7	2.5	0.1	-0.2	-1.3	-1.8
Asia.....	63.129	147.1	146.5	-0.5	-0.1	0.2	-0.4	-0.4
Outbound Air Freight	100.000	153.0	152.9	4.6	0.0	0.0	-0.1	-0.1
Europe (Dec. 2003=100).....	33.490	171.9	171.9	6.8	0.0	0.0	0.0	0.0
Asia.....	47.102	144.9	144.9	3.9	-0.1	0.0	-0.1	0.0
Air Passenger Fares								
Import Air Passenger Fares	100.000	193.3	197.9	4.4	-2.8	-4.3	-0.3	2.4
Europe.....	42.875	215.5	220.5	0.8	-5.3	-6.9	3.5	2.3
Asia.....	23.330	147.6	149.7	0.1	-1.9	-3.2	-7.2	1.4
Latin America/Caribbean.....	8.569	163.8	171.2	4.3	1.7	0.8	-5.5	4.5
Export Air Passenger Fares	100.000	190.2	186.0	3.2	3.6	5.5	-11.4	-2.2
Europe.....	27.640	233.3	230.7	6.7	-0.6	-8.8	-2.3	-1.1
Asia.....	28.296	157.5	152.1	1.8	1.9	19.2	-23.0	-3.4
Latin America/Caribbean.....	18.227	189.9	190.7	-2.5	-4.8	2.8	-1.5	0.4

¹ Relative importance figures are based on 2012 trade values.

NOTES: Data may be revised in each of the three months after original publication.

Dash = Not available

TECHNICAL NOTE

Import and Export Merchandise and Services Price Indexes -- All indexes use a modified Laspeyres formula and are not seasonally adjusted. Price indexes are reweighted annually, with a two-year lag in the weights. Published series use a base year of 2000=100 where possible. More detailed index series and additional information may be obtained at <http://www.bls.gov/mxp>, or by calling (202) 691-7101.

Merchandise Goods Classification Systems -- The merchandise price indexes are published using three classification systems. Items are classified by end use according to the Bureau of Economic Analysis Classification System, by industry according to the North American Industry Classification System (NAICS), and by product category according to the Harmonized System (HS). While classification by end use and product category are self-explanatory, some notes are in order for classifying items by industry. In the NAICS imports and exports tables, items are classified by output industry, not input industry. As an example, NAICS import index 326 (plastics and rubber products manufacturing) include outputs such as manufactured plastic rather than inputs such as petroleum. The NAICS classification structure also matches the classification system used by the PPI (Producer Price Index) to produce the NAICS primary products indexes.

Import Price Indexes -- Products have been classified by the Harmonized Tariff Schedule of the United States Annotated (TSUSA). Import prices are based on U.S. dollar prices paid by the U.S. importer. The prices are generally either "free on board" (f.o.b.) foreign port or "cost, insurance, and freight" (c.i.f.) U.S. port transaction prices, depending on the practices of the individual industry. The index for crude petroleum is calculated from data collected by the U.S. Department of Energy.

Export Price Indexes -- Products have been classified by the Harmonized Schedule B classification system of the U.S. Bureau of the Census. The prices used are generally either "free alongside ship" (f.a.s.) factory or "free on board" (f.o.b.) transaction prices, depending on the practices of the individual industry. Prices used in the grain index, excluding rice, are obtained from the U.S. Department of Agriculture.

Services Price Indexes -- Starting in September 2008 the Import Air Passenger Fares Indexes represent changes in the average revenue per passenger received by foreign carriers from U.S. residents and are calculated from data obtained from an airline consulting service. These data include tickets sold by travel agencies and travel websites. Tickets sold directly by the airlines are excluded, as are frequent flyer tickets generally. Starting in January 2008 the Export Air Passenger Fares Indexes represent changes in the average revenue per passenger received by U.S. carriers from foreign residents and are calculated from data collected directly from airlines. These data include frequent flyer tickets and those sold by consolidators. Taxes and fees are included in the Import Air Passenger Fares Index and excluded from the Export Air Passenger Fares Index. The Air Freight Indexes are calculated from data collected directly from airlines. These data exclude mail and passenger baggage. The scope of the service being priced is the movement of freight from airport to airport only, and does not include any ground transportation or port service. The Air Freight Indexes are presented using two definitions: Balance of Payments (which represent transactions between U.S. and foreign residents) and International (which represent transactions inbound to and outbound from the U.S.). Fact sheets specifying detailed information for each services industry are available at <http://www.bls.gov/mxp> under "MXP Publications."

Import Indexes by Locality of Origin -- Prices used in these indexes are a subset of the data collected for the Import Price Indexes. Beginning with January 2002, the indexes are defined by locality of origin using a nomenclature based upon the North American Industry Classification System (NAICS). Nonmanufactured goods are defined as NAICS 11 and 21 and manufactured goods are defined as NAICS 31-33.

Revision Policy -- To reflect the availability of late reports and corrections by respondents, monthly data may be revised in each of the three months after original publication. After three months, no further data revisions take place. So, for example, data released in the January release will be subject to revision in the releases for February, March, and April.

Uses of the Data -- The primary use of the indexes is to deflate trade statistics, notably the foreign trade sector of the National Income and Product Accounts constructed by the Department of Commerce. Other published indexes are useful for general market analysis. For trade in international services, Balance of Payments indexes are used for deflating National Income and Product Accounts, while International indexes are more appropriate for market analysis. Merchandise and services indexes also can be used to study U.S. competitiveness and to compute price elasticities, and the merchandise import indexes by country or region of origin are useful in terms of trade analysis.

E-Mail Subscription -- The U.S. Import and Export Price Indexes news release is available through an e-mail subscription service at (<http://www.bls.gov/bls/list.htm>).

Additional Information -- More detailed data are available on the Import/Export Price Indexes home page at (<http://www.bls.gov/mxp>). For technical assistance in using the BLS Internet site, send e-mail to (labstat.helpdesk@bls.gov). For Import/Export Price Index data requests, send e-mail to (mxpinfo@bls.gov).

Information from this release will be made available to sensory impaired individuals upon request. Voice phone: 202-691-5200; Federal Relay Service: 1-800-877-8339.