

Transmission of material in this release is embargoed until  
8:30 a.m. (EDT) Wednesday, October 14, 2009

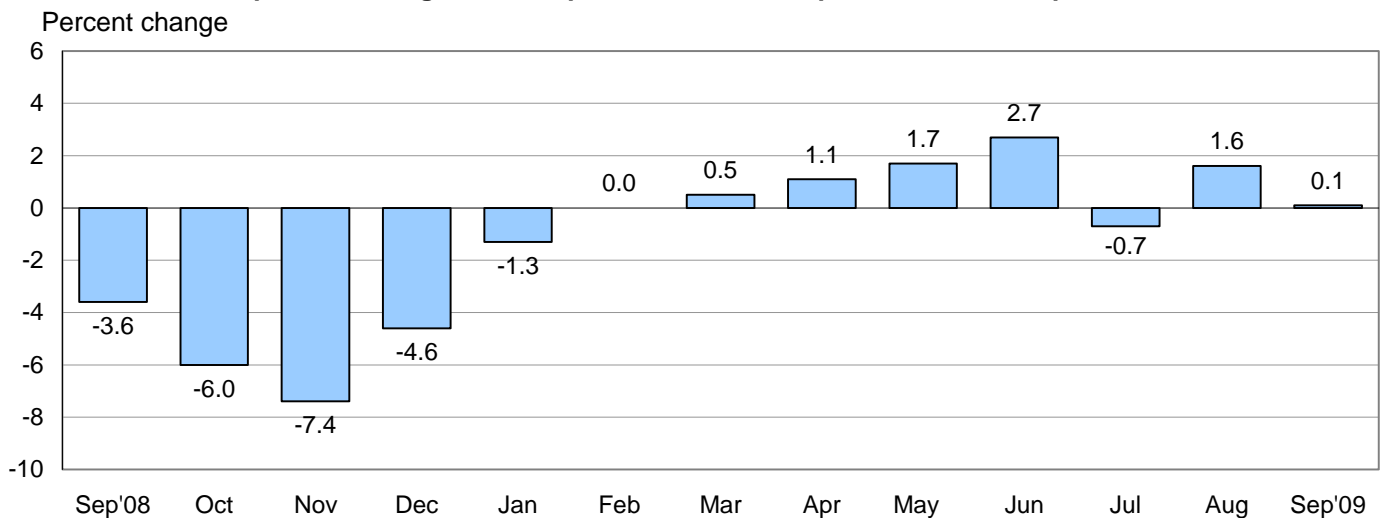
USDL-09-1238

Technical information: (202) 691-7101 • MXPinfo@bls.gov • www.bls.gov/mxp  
Media contact: (202) 691-5902 • PressOffice@bls.gov

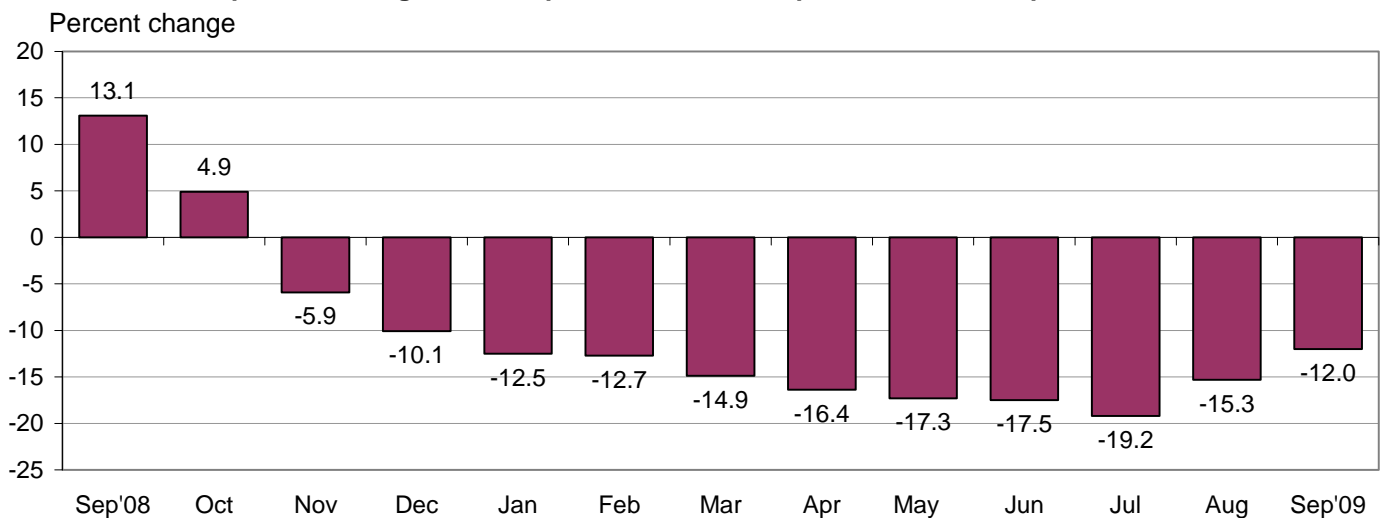
### U.S. IMPORT AND EXPORT PRICE INDEXES – SEPTEMBER 2009

The U.S. Import Price Index edged up 0.1 percent in September, the U.S. Bureau of Labor Statistics reported today, after a 1.6 percent increase in August. The September increase was led by higher nonfuel prices, which more than offset lower fuel prices. The price index for U.S. exports declined 0.3 percent in September following a 0.7 percent increase the previous month.

**Chart 1. One-month percent change in the Import Price Index: September 2008 – September 2009**



**Chart 2. 12-month percent change in the Import Price Index: September 2008 – September 2009**



**All Imports:** Import prices ticked up 0.1 percent in September, led by a 0.6 percent increase in nonfuel prices. The price index for overall imports has only declined once since January, but despite the recent upward trend, import prices fell 12.0 percent for the year ended in September because of the sharp drop in the index at the end of 2008.

**Fuel Imports:** Fuel prices decreased 1.8 percent in September following a 7.1 percent increase the previous month. The decline in fuel prices was partially driven by a 2.1 percent decline in crude prices; a 16.5 percent drop in natural gas prices also contributed to the overall decrease. Fuel prices fell 34.4 percent over the past year.

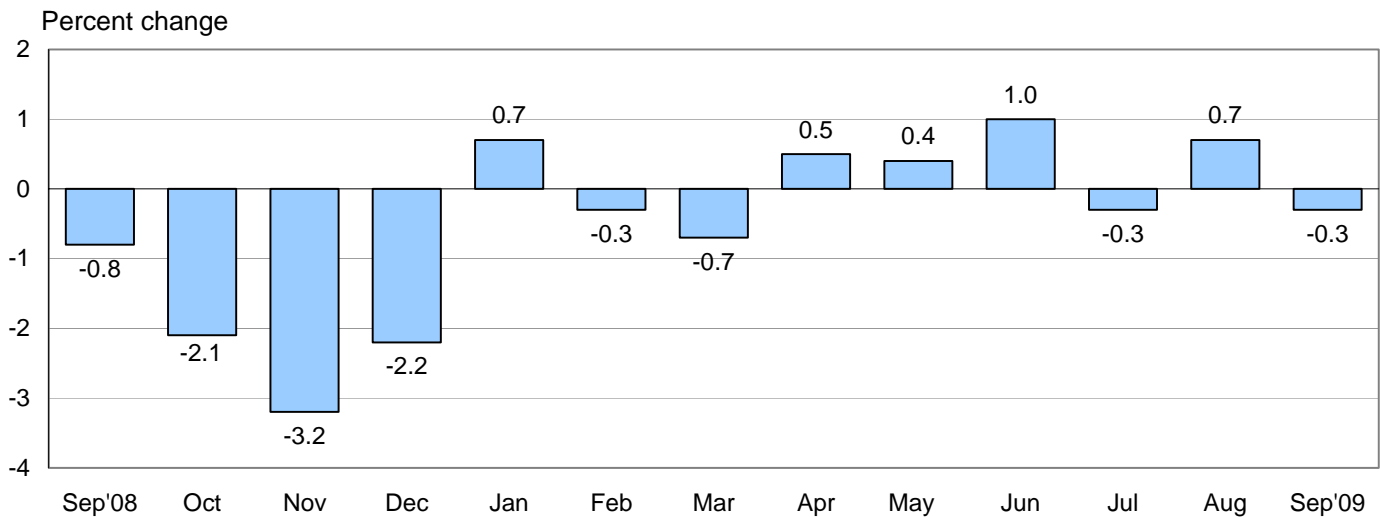
**All Imports Excluding Fuel:** In contrast, nonfuel import prices rose 0.6 percent in September, the largest one-month gain since a similar 0.6 percent advance in July 2008. The September rise in the price index for nonfuel imports followed a 0.3 percent increase in August and higher prices for nonfuel industrial supplies and materials, finished goods and food all contributed to the advance. Despite the recent increases, nonfuel prices fell 4.1 percent over the past 12 months, driven by a 5.2 percent drop in the index from September 2008 to March 2009.

**Table A. Percent changes**

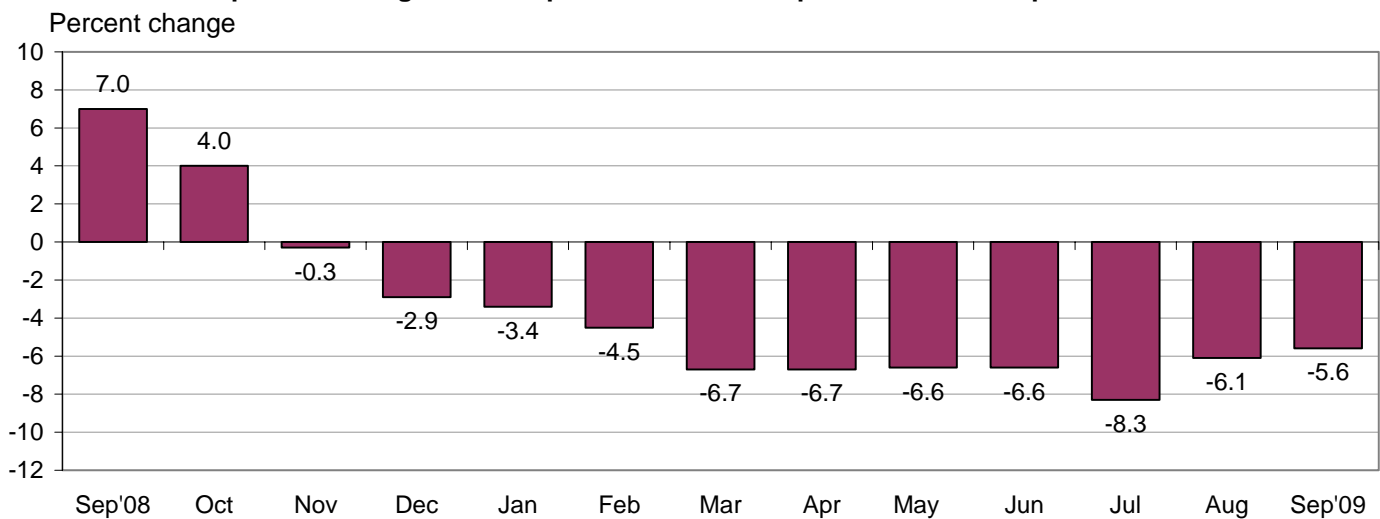
Month	IMPORTS			EXPORTS		
	All imports	Fuel imports	Nonfuel imports	All exports	Agricultural exports	Non-agricultural exports
<b>2008</b>						
September.....	-3.6	-11.7	-0.5	-0.8	0.1	-0.9
October.....	-6.0	-20.8	-0.8	-2.1	-8.4	-1.4
November.....	-7.4	-27.8	-1.7	-3.2	-6.9	-2.8
December.....	-4.6	-22.2	-1.1	-2.2	-6.1	-1.9
<b>2009</b>						
January.....	-1.3	-4.7	-0.7	0.7	5.9	0.3
February.....	0.0	2.7	-0.4	-0.3	-1.7	-0.2
March.....	0.5	7.8	-0.6	-0.7	-3.4	-0.4
April.....	1.1	7.5	0.1	0.5	3.7	0.2
May.....	1.7	9.8	0.2	0.4	3.6	0.3
June.....	2.7	16.0	0.2	1.0	4.2	0.6
July.....	-0.7	-2.8 <sup>r</sup>	-0.2	-0.3	-4.9	0.2 <sup>r</sup>
August.....	1.6 <sup>r</sup>	7.1 <sup>r</sup>	0.3 <sup>r</sup>	0.7	0.2	0.7 <sup>r</sup>
September.....	0.1	-1.8	0.6	-0.3	-2.8	0.0
Sept. 2007 to 2008.....	13.1	38.5	6.1	7.0	20.1	5.8
Sept. 2008 to 2009.....	-12.0	-34.4	-4.1	-5.6	-16.6	-4.4

r Revised

**Chart 3. One-month percent change in the Export Price Index: September 2008 – September 2009**



**Chart 4. 12-month percent change in the Export Price Index: September 2008 – September 2009**



**All Exports:** Export prices fell 0.3 percent for the second time in three months in September after rising 0.7 percent in August. The September downturn was led by falling agricultural prices. The price index for overall exports decreased 5.6 percent over the past year.

**Agricultural Exports:** Prices for agricultural exports fell 2.8 percent in September and 16.6 percent over the past 12 months. Both declines were driven by falling prices for corn, soybeans, and wheat. Corn prices decreased 7.4 percent in September and 37.0 percent over the past year; prices for soybeans dropped 10.8 percent for the month and 14.8 percent for the year ended in September; and the price index for wheat declined 12.1 percent in September and 38.5 percent over the past 12 months.

**All Exports Excluding Agriculture:** Nonagricultural prices were unchanged in September following a 0.7 percent increase in August. Finished goods prices rose overall, but those increases were offset by a fuel-driven decline in nonagricultural industrial supplies and materials prices. The price index for nonagricultural exports fell 4.4 percent over the September 2008-2009 period.

## SELECTED SEPTEMBER HIGHLIGHTS

### Import Prices

**Foods, Feeds, and Beverages:** Foods, feeds, and beverages prices rose 0.4 percent in September after rising 1.3 percent the previous month. The September advance was led by higher vegetable prices which more than offset a drop in coffee prices. The increase in vegetable prices followed declines in each of the four previous months.

**Nonfuel Industrial Supplies and Materials:** Nonfuel industrial supplies and materials prices rose 2.8 percent and were driven by higher prices for unfinished metals that included copper, iron and steel mill products, aluminum, precious metals, nickel, and zinc. Chemical prices also increased in September, led by rising fertilizer prices.

**Finished Goods:** Prices for each of the major finished goods areas—capital goods, consumer goods, and automotive vehicles—ticked up 0.1 percent in September after recording mixed price movement the previous month. Capital goods prices excluding computers were unchanged for the second consecutive month, but rising computer prices in September led the overall price index for capital goods up for the month.

**Imports by Locality of Origin:** Prices for imports from Canada and the European Union increased 0.1 percent and 0.5 percent, respectively, in September despite lower fuel prices. Manufactured articles led the increase for both indexes, rising 1.5 percent for import prices from Canada and 0.5 percent for prices for imports from the European Union. In contrast, the price index for imports from China edged down 0.1 percent for the second time in three months in September after increasing 0.2 percent in August.

**Transportation Services:** Import air passenger fares continued to trend downward in September, decreasing 1.1 percent. The decrease was led by lower Asian and Latin American/Caribbean fares. In contrast, air freight prices rose 0.7 percent.

### Export Prices

**Nonagricultural Industrial Supplies and Materials:** Nonagricultural industrial supplies and materials prices fell 0.2 percent in September following a 2.1 percent increase the previous month. A drop in fuel prices in September more than compensated for rising metals prices.

**Finished Goods:** Capital goods prices and prices for consumer goods each edged up 0.1 percent in September while the price index for automotive vehicles was unchanged. The increase in capital goods prices was led by higher computer prices and rising prices for medicinal, dental, and pharmaceutical materials drove the rise in the price index for consumer goods. The price index for computers, peripherals, and semiconductors rose on a year-over-year basis for the first time since November 1990.

**Transportation Services:** Export air passenger fares fell 9.5 percent in September, led by sharp declines in European and Asian fares. The overall drop was a turnaround from August when export air passenger fares increased 9.1 percent. In contrast, the price index for export air freight advanced 0.8 percent.

---

**Import and Export Price Index data for October 2009 are scheduled for release on Friday, November 13, 2009 at 8:30 a.m. (EST).**

**Table 1. U.S. import price indexes and percent changes for selected categories of goods: September 2008 to September 2009**

[2000=100, unless otherwise noted]

Description	End Use	Relative importance Aug. 2009 <sup>1</sup>	Index		Percent change				
			Aug. 2009	Sept. 2009	Annual	Monthly			
					Sept. 2008 to Sept. 2009	May 2009 to June 2009	June 2009 to July 2009	July 2009 to Aug. 2009	Aug. 2009 to Sept. 2009
<b>All commodities.....</b>		100.000	121.1	121.2	-12.0	2.7	-0.7	1.6	0.1
<b>All imports excluding petroleum.....</b>		82.141	107.5	107.9	-5.4	0.1	-0.2	0.3	0.4
<b>All imports excluding fuels (Dec. 2001=100)..</b>		80.819	111.3	112.0	-4.1	0.2	-0.2	0.3	0.6
<b>Foods, feeds, &amp; beverages.....</b>	0	4.673	140.0	140.5	-5.0	0.4	-1.1	1.3	0.4
Agricultural foods, feeds & beverages, excluding distilled beverages.....	00	3.617	155.7	156.8	-5.0	0.3	-1.5	1.6	0.7
Nonagricultural foods (fish, distilled beverages).....	01	1.056	104.4	103.7	-4.9	0.8	-0.2	0.2	-0.7
<b>Industrial supplies &amp; materials.....</b>	1	32.871	182.3	182.6	-26.6	8.8	-1.7	4.6	0.2
Industrial supplies & materials excluding petroleum.....		15.012	132.6	134.6	-19.6	0.6	-0.8	1.1	1.5
Industrial supplies & materials excluding fuels (Dec. 2001=100).....		13.690	148.0	152.2	-15.2	0.3	-0.3	1.4	2.8
Industrial supplies & materials, durable.....		8.678	140.8	145.9	-14.0	1.3	1.8	1.7	3.6
Industrial supplies & materials nondurable excluding petroleum.....		5.013	122.8	121.1	-25.9	-0.3	-4.1	0.5	-1.4
Fuels & lubricants.....	10	19.180	231.3	227.1	-34.4	16.0	-2.8	7.1	-1.8
Petroleum & petroleum products.....	100	17.858	253.6	250.8	-32.5	17.2	-2.5	7.7	-1.1
Crude.....	10000	12.892	258.5	253.1	-34.2	15.8	-2.2	6.9	-2.1
Fuels, n.e.s.-coals & gas.....	101	1.131	104.6	90.2	-52.8	3.6	-7.1	0.0	-13.8
Gas-natural.....	10110	0.928	89.3	74.6	-59.3	4.2	-8.4	-0.1	-16.5
Paper & paper base stocks.....	11	0.666	98.6	99.7	-16.8	-1.5	-2.8	-0.4	1.1
Materials associated with nondurable supplies & materials.....	12	4.423	133.4	135.4	-16.6	-1.2	-3.8	0.8	1.5
Selected building materials.....	13	1.667	119.5	119.4	-2.7	1.3	1.9	1.1	-0.1
Unfinished metals related to durable goods.....	14	3.569	190.2	205.0	-19.7	3.2	3.6	3.0	7.8
Finished metals related to durable goods. ...	15	1.837	134.6	136.7	-14.5	-0.2	0.2	0.8	1.6
Nonmetals related to durable goods.....	16	1.528	103.2	104.1	-6.6	-0.4	-0.2	0.4	0.9
<b>Capital goods.....</b>	2	23.450	91.9	92.0	-1.4	0.0	0.0	0.0	0.1
Electric generating equipment.....	20	3.024	110.3	110.4	-2.2	0.2	0.3	0.0	0.1
Nonelectrical machinery.....	21	18.321	86.5	86.6	-1.8	-0.2	0.0	0.0	0.1
Transportation equipment excluding motor vehicles (Dec. 2001=100).....	22	2.105	123.3	123.2	4.2	0.3	0.6	0.2	-0.1
<b>Automotive vehicles, parts &amp; engines.....</b>	3	13.913	108.4	108.5	0.4	0.1	0.2	0.2	0.1
<b>Consumer goods, excluding automotives..</b>	4	25.093	103.9	104.0	-1.0	0.1	-0.3	-0.1	0.1
Nondurables, manufactured.....	40	11.575	107.8	107.7	-0.5	0.0	-0.3	0.0	-0.1
Durables, manufactured.....	41	12.318	100.4	100.4	-1.4	0.1	-0.1	-0.1	0.0
Nonmanufactured consumer goods.....	42	1.200	100.9	101.3	-5.0	0.1	0.1	-0.6	0.4

1 Relative importance figures are based on 2007 trade values.

NOTES: Data may be revised in each of the three months after original publication.

Dash = Not available

**Table 2. U.S. export price indexes and percent changes for selected categories of goods: September 2008 to September 2009**

[2000=100, unless otherwise noted]

Description	End Use	Relative importance Aug. 2009 <sup>1</sup>	Index		Percent change				
			Aug. 2009	Sept. 2009	Annual	Monthly			
					Sept. 2008 to Sept. 2009	May 2009 to June 2009	June 2009 to July 2009	July 2009 to Aug. 2009	Aug. 2009 to Sept. 2009
<b>All commodities.....</b>		100.000	118.2	117.9	-5.6	1.0	-0.3	0.7	-0.3
<b>Agricultural commodities.....</b>		8.788	161.7	157.1	-16.6	4.2	-4.9	0.2	-2.8
<b>Nonagricultural commodities.....</b>		91.213	115.1	115.1	-4.4	0.6	0.2	0.7	0.0
<b>Foods, feeds, &amp; beverages.....</b>	0	8.134	164.7	158.3	-16.9	4.5	-5.6	-0.2	-3.9
Agricultural foods, feeds & beverages, excluding distilled beverages.....	00	7.479	167.3	160.5	-17.9	4.9	-6.2	-0.2	-4.1
Nonagricultural foods (fish, distilled beverages).....	01	0.655	142.8	140.0	-3.8	0.1	1.1	-0.2	-2.0
<b>Industrial supplies &amp; materials.....</b>	1	27.526	143.6	143.5	-15.3	2.0	0.1	2.2	-0.1
Industrial supplies & materials, durable.....		10.720	147.8	150.2	-10.1	0.6	0.8	1.9	1.6
Industrial supplies & materials, nondurable.....		16.807	141.8	140.2	-18.3	2.9	-0.4	2.4	-1.1
Agricultural industrial supplies & materials..	10	1.309	138.5	144.3	-8.3	0.6	3.0	2.7	4.2
<b>Nonagricultural industrial supplies &amp; materials.....</b>		26.218	144.1	143.8	-15.6	2.0	-0.1	2.1	-0.2
Fuels & lubricants.....	11	3.999	181.4	169.1	-36.7	9.4	-5.3	9.3	-6.8
Nonagricultural supplies & materials excluding fuels & building materials.....	12	21.193	141.1	142.5	-11.4	0.9	0.9	0.9	1.0
Selected building materials.....	13	1.026	113.8	114.1	-1.1	0.4	-0.1	0.8	0.3
<b>Capital goods.....</b>	2	41.190	103.5	103.6	1.8	0.1	0.3	0.1	0.1
Electrical generating equipment.....	20	3.712	107.2	107.3	-2.0	0.2	-0.1	0.1	0.1
Nonelectrical machinery.....	21	28.539	94.8	95.1	1.3	0.0	0.3	0.1	0.3
Transportation equipment excluding motor vehicles (Dec. 2001=100).....	22	8.938	137.4	137.1	4.9	0.4	0.1	0.0	-0.2
<b>Automotive vehicles, parts &amp; engines.....</b>	3	10.290	107.9	107.9	0.0	-0.1	-0.2	0.1	0.0
<b>Consumer goods, excluding automotives..</b>	4	12.860	109.1	109.2	-0.1	0.5	0.5	0.2	0.1
Nondurables, manufactured.....	40	5.720	109.1	109.4	0.4	0.6	0.1	0.5	0.3
Durables, manufactured.....	41	6.045	109.6	109.5	0.7	0.2	1.3	0.1	-0.1

<sup>1</sup> Relative importance figures are based on 2007 trade values.

NOTES: Data may be revised in each of the three months after original publication.

Dash = Not available

**Table 3. U.S. import price indexes and percent changes for selected categories of goods: September 2008 to September 2009**

[December 2005=100, unless otherwise noted]

Description	NAICS	Relative importance Aug. 2009 <sup>1</sup>	Index		Percent change				
			Aug. 2009	Sept. 2009	Annual	Monthly			
					Sept. 2008 to Sept. 2009	May 2009 to June 2009	June 2009 to July 2009	July 2009 to Aug. 2009	Aug. 2009 to Sept. 2009
<b>Nonmanufactured articles.....</b>		16.243	113.5	111.0	-34.5	12.9	-2.7	5.3	-2.2
<b>Agriculture, forestry, fishing and hunting...</b>	11	1.695	131.2	132.8	-5.1	-1.0	-3.5	2.0	1.2
Crop production.....	111	1.214	138.1	139.8	-2.5	-0.9	-4.9	1.9	1.2
<b>Mining.....</b>	21	14.548	111.5	108.6	-37.0	15.0	-2.6	5.7	-2.6
Mining (except oil and gas) (Dec. 2006=100).....	212	0.434	125.7	125.5	-2.6	0.8	-3.0	0.0	-0.2
<b>Manufactured articles.....</b>		83.225	107.4	108.0	-5.4	0.9	-0.2	0.8	0.6
<b>Manufactured goods, part 1.....</b>	31	10.361	106.9	107.0	-2.3	0.3	-0.1	0.3	0.1
Food manufacturing.....	311	2.431	117.2	117.6	-9.1	1.4	-0.1	0.9	0.3
Beverage and tobacco product manufacturing.....	312	0.935	107.3	107.4	1.1	-0.1	0.3	0.0	0.1
Textile mills.....	313	0.448	112.7	112.5	-1.1	0.3	0.6	0.3	-0.2
Textile product mills.....	314	0.799	99.4	99.4	-2.7	0.0	0.6	0.0	0.0
Apparel manufacturing.....	315	4.187	101.9	101.9	0.1	0.0	-0.3	0.0	0.0
Leather and allied product manufacturing. . .	316	1.562	107.2	107.2	1.4	-0.1	-0.4	0.1	0.0
<b>Manufactured goods, part 2.....</b>	32	18.013	115.7	116.5	-11.7	3.8	-1.7	2.8	0.7
Wood product manufacturing.....	321	1.014	95.1	94.9	-4.9	2.0	3.8	1.8	-0.2
Paper manufacturing.....	322	1.196	98.3	99.5	-12.9	-0.8	-3.2	-0.7	1.2
Petroleum and coal products manufacturing.....	324	4.235	120.1	121.3	-26.8	19.8	-4.1	12.3	1.0
Chemical manufacturing.....	325	8.457	118.8	119.8	-7.8	-0.1	-1.6	0.3	0.8
Plastics and rubber products manufacturing.....	326	1.845	112.1	112.1	-1.8	-0.2	-0.4	0.2	0.0
Nonmetallic mineral product manufacturing.....	327	1.157	119.6	119.6	3.6	0.5	-0.4	-0.2	0.0
<b>Manufactured goods, part 3.....</b>	33	54.852	104.9	105.5	-3.7	0.2	0.3	0.2	0.6
Primary metal manufacturing.....	331	4.104	127.8	135.9	-22.5	1.6	2.3	2.5	6.3
Fabricated metal product manufacturing. . .	332	2.788	115.8	115.8	-4.9	-0.1	-0.3	-0.1	0.0
Machinery manufacturing.....	333	6.907	112.1	112.4	1.0	0.5	0.4	0.1	0.3
Computer and electronic product manufacturing.....	334	15.114	88.9	89.0	-3.4	-0.2	-0.1	0.0	0.1
Electrical equipment, appliance, and component manufacturing.....	335	4.019	112.6	112.7	-1.3	0.0	0.2	0.0	0.1
Transportation equipment manufacturing. . .	336	15.108	105.8	105.9	0.8	0.3	0.2	0.2	0.1
Furniture and related product manufacturing.....	337	1.569	109.0	109.7	-1.6	-0.9	0.0	-0.1	0.6
Miscellaneous manufacturing.....	339	5.244	111.8	111.7	0.6	0.4	0.2	-0.1	-0.1

<sup>1</sup> Relative importance figures are based on 2007 trade values.

NOTES: Data may be revised in each of the three months after original publication.

Dash = Not available

**Table 4. U.S. export price indexes and percent changes for selected categories of goods: September 2008 to September 2009**

[December 2005=100, unless otherwise noted]

Description	NAICS	Relative importance Aug. 2009 <sup>1</sup>	Index		Percent change				
			Aug. 2009	Sept. 2009	Annual Sept. 2008 to Sept. 2009	Monthly			
						May 2009 to June 2009	June 2009 to July 2009	July 2009 to Aug. 2009	Aug. 2009 to Sept. 2009
<b>Nonmanufactured articles.....</b>		6.110	121.0	114.3	-22.4	4.4	-6.7	1.1	-5.5
<b>Agriculture, forestry, fishing and hunting...</b>	11	4.837	140.5	131.2	-22.1	5.0	-7.7	0.4	-6.6
Crop production.....	111	4.486	144.7	134.6	-23.2	5.3	-8.1	0.1	-7.0
<b>Mining.....</b>	21	1.273	77.9	76.7	-22.8	2.0	-2.3	3.9	-1.5
Mining (except oil and gas).....	212	0.962	88.4	90.6	-8.5	1.4	-1.8	2.1	2.5
<b>Manufactured articles.....</b>		91.959	108.9	109.0	-3.6	0.7	0.1	0.5	0.1
<b>Manufactured goods, part 1.....</b>	31	6.569	120.4	121.4	-3.8	1.9	0.1	-0.2	0.8
Food manufacturing.....	311	4.415	135.0	136.4	-4.7	2.5	-0.1	-0.4	1.0
Beverage and tobacco product manufacturing.....	312	0.516	107.0	106.9	2.4	1.2	-0.1	0.1	-0.1
Apparel manufacturing.....	315	0.389	102.7	102.8	1.5	0.1	0.4	0.0	0.1
<b>Manufactured goods, part 2.....</b>	32	22.042	111.8	110.9	-12.8	2.3	-0.2	1.6	-0.8
Wood product manufacturing.....	321	0.455	106.3	107.0	-4.9	0.4	1.1	1.2	0.7
Paper manufacturing.....	322	1.861	109.3	109.7	-5.8	0.8	-1.0	-0.1	0.4
Petroleum and coal products manufacturing.....	324	2.423	109.8	102.1	-43.2	15.4	-9.2	13.5	-7.0
Chemical manufacturing.....	325	14.306	113.9	113.7	-8.5	1.4	1.6	0.4	-0.2
Plastics and rubber products manufacturing.....	326	2.164	108.1	107.9	-3.6	-0.6	0.1	0.0	-0.2
Nonmetallic mineral product manufacturing.....	327	0.833	109.7	110.3	0.2	0.0	-3.0	0.0	0.5
<b>Manufactured goods, part 3.....</b>	33	63.349	106.7	107.0	0.1	0.2	0.2	0.2	0.3
Primary metal manufacturing.....	331	4.204	121.5	125.0	-13.9	0.8	0.5	1.0	2.9
Fabricated metal product manufacturing. ....	332	2.823	121.2	121.4	2.4	0.1	-0.2	0.2	0.2
Machinery manufacturing.....	333	12.698	112.3	112.4	1.4	-0.1	0.5	-0.1	0.1
Computer and electronic product manufacturing.....	334	16.511	94.0	94.3	0.0	0.0	0.1	0.2	0.3
Electrical equipment, appliance, and component manufacturing.....	335	3.606	107.5	107.5	0.0	0.2	0.4	0.2	0.0
Transportation equipment manufacturing....	336	18.228	110.3	110.2	2.8	0.2	0.0	0.0	-0.1
Miscellaneous manufacturing.....	339	4.939	110.6	110.6	0.1	0.3	0.8	0.0	0.0

<sup>1</sup> Relative importance figures are based on 2007 trade values.

NOTES: Data may be revised in each of the three months after original publication.

Dash = Not available



**Table 5. U.S. import price indexes and percent changes for selected categories of goods: September 2008 to September 2009**

[2000=100, unless otherwise noted]

Description	Harmonized system	Relative importance Aug. 2009 <sup>1</sup>	Index		Percent change				
			Aug. 2009	Sept. 2009	Annual	Monthly			
					Sept. 2008 to Sept. 2009	May 2009 to June 2009	June 2009 to July 2009	July 2009 to Aug. 2009	Aug. 2009 to Sept. 2009
<b>Live animals; animal products.....</b>	I	1.136	130.4	131.3	-8.1	2.1	0.4	0.7	0.7
Meat and edible meat offal.....	02	0.260	156.1	157.5	-9.2	2.8	1.8	1.7	0.9
Fish and crustaceans, molluscs and other aquatic invertebrates.....	03	0.557	99.7	98.6	-7.6	1.4	-0.6	0.5	-1.1
<b>Vegetable products.....</b>	II	1.415	156.6	158.4	-2.6	-1.3	-4.7	1.9	1.1
Edible vegetables, roots, and tubers.....	07	0.407	279.4	293.4	35.4	-7.4	-3.6	-1.1	5.0
Edible fruit and nuts; peel of citrus fruit or melons.....	08	0.412	98.6	98.1	-15.9	0.0	-7.3	2.5	-0.5
Coffee, tea, mate and spices.....	09	0.271	162.9	156.4	-8.3	5.2	-8.3	10.3	-4.0
<b>Prepared foodstuffs, beverages, and tobacco.....</b>	IV	2.290	135.8	136.4	-2.8	0.4	0.4	0.7	0.4
Preparations of cereals, flour, starch or milk; bakers' wares (Dec. 2007=100).....	19	0.229	111.7	112.7	-0.4	2.8	1.4	0.1	0.9
Preparations of vegetables, fruit, nuts, or other parts of plants.....	20	0.279	125.5	125.7	-10.4	0.6	0.1	0.3	0.2
Beverages, spirits, and vinegar.....	22	0.939	116.5	116.6	-0.6	0.3	0.3	0.1	0.1
<b>Mineral products.....</b>	V	19.297	233.0	228.8	-33.3	15.4	-2.9	6.9	-1.8
Mineral fuels, oils and residuals, bituminous substances and mineral waxes.....	27	18.931	230.0	225.8	-34.4	15.7	-2.9	7.0	-1.8
<b>Products of the chemical or allied industries.....</b>	VI	7.690	130.4	131.2	-9.6	-0.7	-1.2	0.5	0.6
Inorganic chemicals.....	28	0.699	196.0	223.1	-24.3	-8.8	-9.6	-3.4	13.8
Organic chemicals.....	29	2.485	127.3	125.9	-6.4	1.5	0.4	1.8	-1.1
Pharmaceutical products.....	30	2.727	114.1	114.2	0.5	0.2	0.7	0.0	0.1
Tanning & dyeing extracts; dye & pigments; varnish & paints; putty.....	32	0.171	104.5	107.3	-2.0	0.1	0.6	0.0	2.7
Essential oils and resinoids (Dec. 2001=100).....	33	0.425	120.5	121.1	-2.5	1.2	1.3	0.2	0.5
Miscellaneous chemical products.....	38	0.422	89.8	90.3	-10.1	-0.3	-0.8	0.2	0.6
<b>Plastics and articles thereof; rubber and articles thereof.....</b>	VII	2.889	126.4	127.2	-7.8	0.4	-2.9	0.3	0.6
Plastics and articles thereof.....	39	1.878	123.8	124.1	-8.1	0.7	-4.4	0.2	0.2
Rubber and articles thereof.....	40	1.011	131.4	133.3	-7.2	-0.1	-0.1	0.5	1.4
<b>Raw hides, skins, leather, furskins, travel goods, etc.....</b>	VIII	0.622	113.4	113.6	1.0	-0.2	-0.4	0.2	0.2
Articles of leather; travel goods, bags, etc. of various materials.....	42	0.561	114.4	114.5	1.4	-0.2	-0.4	0.2	0.1
<b>Wood, wood charcoal, cork, straw, basketware and wickerwork.....</b>	IX	1.041	115.9	115.7	-5.3	1.8	3.3	1.8	-0.2
<b>Woodpulp, recovered paper, and paper products.....</b>	X	1.379	104.1	104.6	-11.1	-0.7	-3.1	-0.7	0.5
Paper and paperboard; articles of paper pulp, paper or paperboard.....	48	0.942	101.5	101.2	-11.2	-1.1	-4.7	-1.2	-0.3
Printed matter.....	49	0.285	120.3	119.7	0.3	0.0	0.3	0.0	-0.5
<b>Textile and textile articles.....</b>	XI	5.262	102.9	102.8	-1.2	0.0	0.2	0.1	-0.1
Articles of apparel and clothing accessories, knitted or crocheted.....	61	1.982	99.5	99.5	-1.2	-0.1	0.0	0.0	0.0
Articles of apparel and clothing accessories, not knitted or crocheted.....	62	2.013	103.1	103.0	0.8	0.0	-0.3	0.0	-0.1
Made-up or worn textile articles.....	63	0.539	90.7	90.7	-5.5	-0.1	0.4	0.0	0.0
<b>Headgear, umbrellas, artificial flowers, etc. ...</b>	XII	1.274	107.7	107.6	1.2	0.1	-0.4	0.1	-0.1
Footwear and parts of such articles.....	64	1.073	106.8	106.7	1.3	-0.1	-0.5	0.1	-0.1

See footnotes at end of table.

**Table 5. U.S. import price indexes and percent changes for selected categories of goods: September 2008 to September 2009 — Continued**  
 [2000=100, unless otherwise noted]

Description	Harmoni- zied system	Relative importance Aug. 2009 <sup>1</sup>	Index		Percent change				
			Aug. 2009	Sept. 2009	Annual	Monthly			
					Sept. 2008 to Sept. 2009	May 2009 to June 2009	June 2009 to July 2009	July 2009 to Aug. 2009	Aug. 2009 to Sept. 2009
<b>Stone, plaster, cement, asbestos, ceramics, glass etc.....</b>	XIII	1.030	124.5	124.6	4.9	0.7	-0.4	-0.2	0.1
Articles of stone, plaster, cement, asbestos, or mica (Dec. 2001=100).....	68	0.382	117.4	117.5	1.5	0.3	-0.2	-0.2	0.1
Ceramic products.....	69	0.326	139.4	139.4	13.5	1.7	-0.1	0.0	0.0
Glass and glassware.....	70	0.321	116.6	116.7	0.8	0.3	-0.9	-0.6	0.1
<b>Pearls, stones, precious metals, imitation jewelry, and coins.....</b>	XIV	2.619	140.2	142.3	-0.1	3.0	-0.1	-0.1	1.5
<b>Base metals and articles of base metals.....</b>	XV	5.582	155.7	162.2	-20.4	0.1	1.3	1.7	4.2
Iron and steel.....	72	1.220	184.4	193.0	-36.9	0.0	2.3	3.1	4.7
Articles of iron or steel.....	73	1.714	135.1	135.4	-18.7	-2.6	-1.9	-1.4	0.2
Copper and articles thereof.....	74	0.621	262.8	293.3	-3.8	4.9	4.5	7.1	11.6
Aluminum and articles thereof.....	76	0.745	115.0	123.3	-18.8	0.8	3.5	5.1	7.2
Tools, implements, cutlery, spoons and forks, of base metal; parts thereof.....	82	0.392	117.3	117.4	0.8	-0.3	0.0	-0.1	0.1
Miscellaneous articles of base metal.....	83	0.469	128.8	128.8	-1.6	0.0	-0.2	-1.0	0.0
<b>Machinery, electrical equipment, TV image and sound recorders, parts, etc.....</b>	XVI	25.928	87.0	87.2	-1.7	0.1	0.0	0.1	0.2
Machinery and mechanical appliances; parts thereof.....	84	13.097	88.4	88.5	-0.4	0.1	0.5	0.1	0.1
Electrical machinery and equip, sound and TV recorders & reproducers, parts.....	85	12.831	85.7	85.8	-3.1	0.0	-0.2	0.1	0.1
<b>Vehicles, aircraft, vessels and associated transport equipment.....</b>	XVII	12.866	110.0	110.2	0.5	0.2	0.2	0.1	0.2
Motor vehicles and their parts.....	87	11.675	109.0	109.1	0.3	0.1	0.2	0.2	0.1
Aircraft, spacecraft, and parts thereof (Dec. 2002=100).....	88	1.080	115.9	115.9	3.2	-0.2	0.1	0.3	0.0
<b>Optical, photo, measuring, medical &amp; musical instruments; &amp; timepieces.....</b>	XVIII	3.215	102.3	102.3	0.8	0.3	0.2	0.1	0.0
Optical, photographic, measuring and medical instruments.....	90	2.885	100.0	100.0	0.6	0.2	0.3	0.0	0.0
Clocks and watches and parts thereof.....	91	0.250	123.8	124.1	1.8	0.5	0.3	0.0	0.2
<b>Miscellaneous manufactured articles.....</b>	XX	4.250	107.9	107.9	0.4	-0.3	0.2	0.0	0.0
Furniture & stuffed furnishings; lamps & lighting fittings, nesoi; prefab bldgs.....	94	2.311	112.1	112.4	-0.6	-0.6	-0.1	0.0	0.3
Toys, games and sports equipment; parts and accessories thereof.....	95	1.725	101.5	101.2	1.5	0.1	0.6	0.0	-0.3
Miscellaneous manufactured articles.....	96	0.214	116.0	116.0	2.7	0.3	0.1	-0.1	0.0

1 Relative importance figures are based on 2007 trade values.

NOTES: Data may be revised in each of the three months after original publication.

Dash = Not available

**Table 6. U.S. export price indexes and percent changes for selected categories of goods: September 2008 to September 2009**  
 [2000=100, unless otherwise noted]

Description	Harmonized system	Relative importance Aug. 2009 <sup>1</sup>	Index		Percent change				
			Aug. 2009	Sept. 2009	Annual Sept. 2008 to Sept. 2009	Monthly			
						May 2009 to June 2009	June 2009 to July 2009	July 2009 to Aug. 2009	Aug. 2009 to Sept. 2009
<b>Live animals; animal products.....</b>	I	1.507	156.7	154.5	-14.5	1.7	-1.3	-0.6	-1.4
Meat & edible meat offal (Dec. 2006=100). . .	02	0.787	126.6	124.2	-18.0	3.6	-3.1	-0.9	-1.9
Fish and crustaceans, molluscs and other aquatic invertebrates.....	03	0.384	141.0	137.0	-8.7	-1.5	0.9	-0.7	-2.8
<b>Vegetable products.....</b>	II	4.623	187.8	176.6	-21.3	5.6	-8.7	0.2	-6.0
Edible fruit and nuts; peel of citrus fruit or melons.....	08	0.596	106.0	107.4	-9.9	1.5	1.5	3.2	1.3
Cereals.....	10	1.815	183.7	168.3	-37.1	8.1	-17.4	0.2	-8.4
Oilseeds and misc. grains, seeds, fruits, plants, straw and fodder.....	12	1.577	228.6	210.6	-12.5	8.0	-3.9	0.0	-7.9
<b>Prepared foodstuffs, beverages, and tobacco.....</b>	IV	2.485	139.1	139.3	1.8	2.2	-0.7	-0.6	0.1
Miscellaneous edible preparations.....	21	0.364	117.6	118.0	-2.4	-0.3	-0.3	-0.2	0.3
Beverages, spirits, and vinegar (Dec.2008=100).....	22	0.283	101.9	101.7	-	1.4	-0.1	0.2	-0.2
Residues and waste from the food industries; prepared animal feed.....	23	0.551	205.4	205.3	1.3	9.7	-3.5	-2.9	0.0
<b>Mineral products.....</b>	V	3.867	208.7	197.8	-38.9	9.4	-7.1	10.2	-5.2
Mineral fuels, oils and residuals, bituminous substances and mineral waxes.....	27	3.349	203.1	189.8	-41.1	10.6	-7.9	11.2	-6.5
<b>Products of the chemical or allied industries.....</b>	VI	11.735	136.5	135.7	-7.2	0.8	0.6	0.0	-0.6
Inorganic chemicals.....	28	1.243	188.4	172.1	-18.0	-2.2	3.6	-1.2	-8.7
Organic chemicals.....	29	3.332	140.9	140.6	-15.3	1.6	0.7	1.1	-0.2
Pharmaceutical products.....	30	2.673	116.1	116.5	-0.9	0.9	-0.3	0.2	0.3
Tanning or dyeing extracts, dyes, paints, varnish, putty, & inks.....	32	0.540	114.2	114.4	-0.9	1.5	0.2	0.0	0.2
Essential oils and resinoids; perfumery cosmetic or toilet preparations.....	33	0.740	126.1	126.5	2.9	1.3	-0.2	1.1	0.3
Soap; lubricants; waxes, polishing or scouring products; candles, pastes.....	34	0.409	114.8	115.7	-5.9	0.5	0.4	-0.3	0.8
Miscellaneous chemical products.....	38	1.798	131.6	132.7	2.2	2.2	0.5	-0.3	0.8
<b>Plastics and articles thereof; rubber and articles thereof.....</b>	VII	5.349	133.8	134.9	-9.8	0.6	2.7	0.4	0.8
Plastics and articles thereof.....	39	4.353	128.9	129.6	-9.6	1.1	2.8	0.2	0.5
Rubber and articles thereof.....	40	0.996	154.5	157.9	-11.1	-1.5	2.2	1.4	2.2
<b>Raw hides, skins, leather, furskins, travel goods, etc.....</b>	VIII	0.312	93.3	98.1	-14.8	4.1	8.7	8.5	5.1
<b>Wood, wood charcoal, cork, straw, basketware and wickerwork.....</b>	IX	0.564	102.5	102.8	-8.4	0.5	-1.5	1.5	0.3
<b>Woodpulp, recovered paper, and paper products.....</b>	X	2.368	107.4	107.7	-8.7	1.4	-0.4	0.5	0.3
Woodpulp and recovered paper.....	47	0.529	96.9	99.2	-23.8	5.2	1.4	2.5	2.4
Paper and paperboard; articles of paper pulp, paper or paperboard.....	48	1.304	110.1	109.6	-3.7	0.3	-1.5	-0.3	-0.5
Printed material.....	49	0.535	117.1	117.5	0.1	1.0	0.8	0.1	0.3
<b>Textile and textile articles.....</b>	XI	1.969	102.8	103.4	-5.5	-0.9	1.3	-0.4	0.6
Cotton, including yarns and woven fabrics thereof.....	52	0.555	94.9	96.1	-13.0	-3.5	4.6	-0.6	1.3
<b>Stone, plaster, cement, asbestos, ceramics, glass etc. (Dec.2008=100).....</b>	XIII	0.822	113.6	113.6	1.1	0.1	-2.0	0.0	0.0
Glass and glassware.....	70	0.427	96.2	96.1	-2.8	-0.1	-3.9	0.0	-0.1
<b>Pearls, stones, precious metals, imitation jewelry, and coins.....</b>	XIV	3.853	173.8	176.8	-0.6	2.6	1.6	-0.1	1.7

See footnotes at end of table.

**Table 6. U.S. export price indexes and percent changes for selected categories of goods: September 2008 to September 2009 — Continued**  
 [2000=100, unless otherwise noted]

Description	Harmoni- zied system	Relative importance Aug. 2009 <sup>1</sup>	Index		Percent change				
			Aug. 2009	Sept. 2009	Annual	Monthly			
					Sept. 2008 to Sept. 2009	May 2009 to June 2009	June 2009 to July 2009	July 2009 to Aug. 2009	Aug. 2009 to Sept. 2009
<b>Base metals and articles of base metals.....</b>	XV	5.214	149.7	151.7	-13.9	-0.4	0.8	3.5	1.3
Iron and steel.....	72	1.329	167.9	172.7	-25.4	-1.4	3.8	7.8	2.9
Articles of iron or steel.....	73	1.466	160.0	157.6	-1.9	-0.1	-2.3	0.1	-1.5
Copper and articles thereof.....	74	0.507	186.8	195.8	-21.5	-2.3	0.9	7.6	4.8
Aluminum and articles thereof.....	76	0.745	108.6	113.2	-18.3	1.2	3.5	4.4	4.2
Tools, implements, cutlery, spoons and forks, of base metal; parts thereof.....	82	0.402	122.3	122.3	1.7	0.0	0.3	0.0	0.0
Miscellaneous articles of base metal.....	83	0.337	121.8	122.3	-6.4	0.0	-0.1	-0.1	0.4
<b>Machinery, electrical equipment, TV image and sound recorders, parts, etc.....</b>	XVI	31.254	95.6	95.8	0.7	0.0	0.3	0.0	0.2
Machinery and mechanical appliances; parts thereof.....	84	17.970	105.3	105.7	1.3	0.0	0.2	0.0	0.4
Electrical machinery and equipment and parts and accessories thereof.....	85	13.284	85.0	85.1	-0.1	0.0	0.4	0.0	0.1
<b>Vehicles, aircraft, vessels and associated transport equipment.....</b>	XVII	15.796	120.5	120.3	2.7	0.2	0.0	0.0	-0.2
Motor vehicles and their parts.....	87	9.042	107.5	107.5	0.4	0.0	-0.2	0.0	0.0
<b>Optical, photo, measuring, medical &amp; musical instruments; &amp; timepieces.....</b>	XVIII	6.302	108.6	108.8	1.8	0.4	0.4	0.4	0.2
<b>Miscellaneous manufactured articles.....</b>	XX	1.564	107.1	108.0	-0.6	0.0	0.2	0.0	0.8
Furniture; stuffed furnishings; lamps and lighting fittings nesoi;.....	94	0.761	116.1	118.2	0.6	-0.3	0.0	0.0	1.8
Toys, games and sports equipment; parts and accessories thereof.....	95	0.679	93.4	93.4	-1.1	0.3	0.1	0.0	0.0

1 Relative importance figures are based on 2007 trade values.

NOTES: Data may be revised in each of the three months after original publication.

Dash = Not available

**Table 7. U.S. import price indexes and percent changes by locality of origin: September 2008 to September 2009**

[2000=100, unless otherwise noted]

Description	Percent of U.S. imports <sup>1</sup>	Index		Percent change				
		Aug. 2009	Sept. 2009	Annual	Monthly			
				Sept. 2008 to Sept. 2009	May 2009 to June 2009	June 2009 to July 2009	July 2009 to Aug. 2009	Aug. 2009 to Sept. 2009
<b>Industrialized Countries<sup>2</sup></b> .....	42.434	119.8	119.8	-11.3	1.5	-0.2	0.6	0.0
Nonmanufactured articles.....	4.390	168.4	160.5	-42.5	10.9	-1.3	0.0	-4.7
Manufactured articles.....	37.621	115.6	116.1	-6.5	0.7	0.0	0.6	0.4
<b>Other Countries<sup>3</sup></b> .....	57.566	120.0	119.9	-13.7	3.1	-0.9	2.0	-0.1
Nonmanufactured articles.....	12.442	231.5	228.1	-32.1	12.6	-3.2	6.0	-1.5
Manufactured articles.....	44.910	104.3	104.6	-6.0	0.8	-0.3	1.1	0.3
<b>Canada</b> .....	15.963	129.5	129.6	-19.1	2.7	-0.6	1.0	0.1
Nonmanufactured articles.....	3.979	161.5	153.1	-43.9	10.9	-1.3	0.2	-5.2
Manufactured articles.....	11.678	124.0	125.9	-9.2	0.6	-0.4	1.2	1.5
<b>European Union<sup>4</sup></b> .....	17.447	124.9	125.5	-4.6	0.6	0.2	0.2	0.5
Nonmanufactured articles.....	0.222	229.0	225.8	-32.0	11.4	-0.4	0.0	-1.4
Manufactured articles.....	17.133	122.6	123.2	-3.9	0.4	0.2	0.2	0.5
<b>France (Dec. 2003=100)</b> .....	1.954	122.0	122.3	1.5	0.7	0.8	0.3	0.2
<b>Germany (Dec. 2003=100)</b> .....	4.735	109.8	110.3	-1.4	0.4	0.6	0.5	0.5
<b>United Kingdom (Dec. 2003=100)</b> .....	2.660	121.2	121.4	-9.3	1.5	0.1	0.2	0.2
<b>Latin America<sup>5</sup></b> .....	17.808	148.2	148.7	-18.2	3.5	-1.6	2.7	0.3
Nonmanufactured articles.....	5.160	260.6	257.7	-26.0	9.9	-4.1	6.9	-1.1
Manufactured articles.....	12.547	125.4	126.7	-12.9	0.9	-0.6	1.0	1.0
<b>Mexico (Dec. 2003=100)</b> .....	10.785	133.2	133.7	-10.9	1.1	-1.6	1.6	0.4
Nonmanufactured articles (Dec. 2008=100).....	1.947	136.7	136.2	-	6.3	-5.8	7.0	-0.4
Manufactured articles (Dec. 2008=100)....	8.788	95.7	96.2	-	-0.4	-0.4	0.2	0.5
<b>Pacific Rim (Dec. 2003=100)<sup>6</sup></b> .....	33.590	99.8	99.9	-2.5	0.4	-0.1	0.3	0.1
<b>China (Dec. 2003=100)</b> .....	16.852	100.5	100.4	-3.2	0.0	-0.1	0.2	-0.1
<b>Japan</b> .....	7.488	97.1	97.2	2.4	0.7	0.1	0.1	0.1
<b>Asian NICs<sup>7</sup></b> .....	5.647	85.9	86.0	-7.7	0.9	-0.4	0.6	0.1
<b>ASEAN (Dec. 2003=100)<sup>8</sup></b> .....	5.729	97.2	97.2	-4.2	0.9	-0.3	0.4	0.0
<b>Asia Near East (Dec. 2003=100)<sup>9</sup></b> .....	3.992	191.0	187.3	-28.6	9.1	-2.6	4.7	-1.9

1 Percentage of trade figures are based on 2007 trade values.

2 Includes Western Europe, Canada, Japan, Australia, New Zealand and South Africa.

3 Includes Eastern Europe, Latin America, OPEC countries, and other countries in Asia, Africa and the Western Hemisphere.

4 Includes European Union countries.

5 Includes Mexico, Central America, South America and the Caribbean.

6 Includes China, Japan, Australia, Brunei, Indonesia, Macao, Malaysia, New Zealand, Papua New Guinea, Philippines and Asian Newly Industrialized Countries.

7 Asian Newly Industrialized Countries. Includes Hong Kong, Singapore, South Korea and Taiwan.

8 Association of Southeast Asian Nations. Includes Brunei, Cambodia, Indonesia, Laos, Malaysia, Myanmar, Philippines, Singapore, Thailand and Vietnam.

9 Includes Bahrain, Iran, Iraq, Israel, Jordan, Kuwait, Lebanon, Oman, Qatar, Saudi Arabia, Syria, United Arab Emirates and Yemen.

NOTES: Data may be revised in each of the three months after original publication.

Regions are not mutually exclusive.

Dash = Not available

**Table 8. U.S. international price indexes and percent changes for selected transportation services: September 2008 to September 2009**

[2000=100, unless otherwise noted]

Description	Relative importance Aug. 2009 <sup>1</sup>	Index		Percent change				
		Aug. 2009	Sept. 2009	Annual	Monthly			
				Sept. 2008 to Sept. 2009	May 2009 to June 2009	June 2009 to July 2009	July 2009 to Aug. 2009	Aug. 2009 to Sept. 2009
<b>Air Freight</b>								
<b>Import Air Freight</b> .....	100.000	133.5	134.5	-14.4	2.2	0.5	0.1	0.7
Europe (Dec. 2003=100).....	23.271	131.7	133.1	-21.1	2.3	3.3	1.1	1.1
Asia.....	66.940	115.0	115.8	-10.0	1.9	-0.8	-0.3	0.7
<b>Export Air Freight</b> .....	100.000	120.0	121.0	-16.1	-1.2	1.7	0.5	0.8
Europe (Dec. 2006=100).....	36.456	108.3	109.5	-21.7	-2.2	2.5	0.0	1.1
<b>Inbound Air Freight</b> .....	100.000	125.9	126.3	-16.7	0.6	0.2	0.5	0.3
Europe (Dec. 2003=100).....	25.110	123.4	124.6	-23.0	0.5	2.7	0.6	1.0
Asia.....	62.772	108.8	109.2	-11.8	0.8	-1.1	0.6	0.4
<b>Outbound Air Freight</b> .....	100.000	110.8	111.6	-24.1	-0.5	0.2	-1.3	0.7
Europe (Dec. 2003=100).....	40.067	128.0	128.7	-23.5	-3.4	0.0	0.3	0.5
Asia.....	41.480	101.8	102.4	-22.2	2.1	-0.6	-0.3	0.6
<b>Air Passenger Fares</b>								
<b>Import Air Passenger Fares</b> .....	100.000	139.5	137.9	-14.5	13.0	-3.1	-2.2	-1.1
Europe.....	42.866	143.0	147.0	-13.1	28.6	-6.0	-5.3	2.8
Asia.....	29.029	130.0	124.4	-7.9	6.6	-0.4	-4.0	-4.3
Latin America/Caribbean.....	12.515	128.3	117.6	-12.3	0.9	7.8	4.5	-8.3
<b>Export Air Passenger Fares</b> .....	100.000	155.4	140.7	-18.2	3.2	3.0	9.1	-9.5
Europe.....	31.819	185.6	165.6	-21.8	15.7	6.7	-0.3	-10.8
Asia.....	35.775	137.9	122.2	-16.4	-10.0	2.9	22.7	-11.4
Latin America/Caribbean.....	20.317	155.5	148.8	-11.9	7.9	4.1	3.9	-4.3

1 Relative importance figures are based on 2007 trade values.

NOTES: Data may be revised in each of the three months after original publication.

Dash = Not available

## TECHNICAL NOTE

**Import and Export Merchandise and Services Price Indexes** -- All indexes use a modified Laspeyres formula and are not seasonally adjusted. Price indexes for merchandise goods are reweighted annually, with a two-year lag in the weights. Published series use a base year of 2000=100 where possible. More detailed index series and additional information may be obtained at <http://www.bls.gov/mxp>, or by calling (202) 691-7101.

**Merchandise Goods Classification Systems** -- The merchandise price indexes are published using three classification systems. Items are classified by end use according to the Bureau of Economic Analysis Classification System, by industry according to the North American Industry Classification System (NAICS), and by product category according to the Harmonized System (HS). While classification by end use and product category are self-explanatory, some notes are in order for classifying items by industry. In the NAICS imports and exports tables, items are classified by output industry, not input industry. As an example, NAICS import index 326 (plastics and rubber products manufacturing) include outputs such as manufactured plastic rather than inputs such as petroleum. The NAICS classification structure also matches the classification system used by the PPI (Producer Price Index) to produce the NAICS primary products indexes.

**Import Price Indexes** -- Products have been classified by the Harmonized Tariff Schedule of the United States Annotated (TSUSA). Import prices are based on U.S. dollar prices paid by the U.S. importer. The prices are generally either "free on board" (f.o.b.) foreign port or "cost, insurance, and freight" (c.i.f.) U.S. port transaction prices, depending on the practices of the individual industry. The index for crude petroleum is calculated from data collected by the U.S. Department of Energy.

**Export Price Indexes** -- Products have been classified by the Harmonized Schedule B classification system of the U.S. Bureau of the Census. The prices used are generally either "free alongside ship" (f.a.s.) factory or "free on board" (f.o.b.) transaction prices, depending on the practices of the individual industry. Prices used in the grain index, excluding rice, are obtained from the U.S. Department of Agriculture.

**Services Price Indexes** -- Starting in September 2008 the Import Air Passenger Fares Indexes represent changes in the average revenue per passenger received by foreign carriers from U.S. residents and are calculated from data obtained from an airline consulting service. These data include tickets sold by travel agencies and travel websites. Tickets sold directly by the airlines are excluded, as are frequent flyer tickets generally. Starting in January 2008 the Export Air Passenger Fares Indexes represent changes in the average revenue per passenger received by U.S. carriers from foreign residents and are calculated from data collected directly from airlines. These data include frequent flyer tickets and those sold by consolidators. Taxes and fees are included in the Import Air Passenger Fares Index and excluded from the Export Air Passenger Fares Index. The Air Freight Indexes are calculated from data collected directly from airlines. These data exclude mail and passenger baggage. The scope of the service being priced is the movement of freight from airport to airport only, and does not include any ground transportation or port service. The Air Freight Indexes are presented using two definitions: Balance of Payments (which represent transactions between U.S. and foreign residents) and International (which represent transactions inbound to and outbound from the U.S.). Fact sheets specifying detailed information for each services industry are available at <http://www.bls.gov/mxp> under "MXP Publications".

**Import Indexes by Locality of Origin** -- Prices used in these indexes are a subset of the data collected for the Import Price Indexes. Beginning with January 2002, the indexes are defined by locality of origin using a nomenclature based upon the North American Industry Classification System (NAICS). Nonmanufactured goods are defined as NAICS 11 and 21 and manufactured goods are defined as NAICS 31-33.

**Revision Policy** -- To reflect the availability of late reports and corrections by respondents, monthly data may be revised in each of the three months after original publication. After three months, no further data revisions take place. So, for example, data released in the January release will be subject to revision in the releases for February, March, and April.

**Uses of the Data** -- The primary use of the indexes is to deflate trade statistics, notably the foreign trade sector of the National Income and Product Accounts constructed by the Department of Commerce. Other published indexes are useful for general market analysis. For trade in international services, Balance of Payments indexes are used for deflating National Income and Product Accounts, while International indexes are more appropriate for market analysis. Merchandise and services indexes also can be used to study U.S. competitiveness and to compute price elasticities, and the merchandise import indexes by country or region of origin are useful in terms of trade analysis.

**E-Mail Subscription** -- The IPP news release is available through an e-mail subscription service at (<http://www.bls.gov/mxp>) or (<http://www.bls.gov/bls/newsrels.htm>).

**Additional Information** -- More detailed IPP data are available on the IPP home page at (<http://www.bls.gov/mxp>). Flat Files and the FTP server are available for users requiring access to either a large volume of time series data or other IPP-related documentation. The FTP site can be accessed at <ftp://ftp.bls.gov>. For technical assistance in using the BLS Internet site, send e-mail to ([labstat.helpdesk@bls.gov](mailto:labstat.helpdesk@bls.gov)). For IPP data requests, send e-mail to ([mxpinfo@bls.gov](mailto:mxpinfo@bls.gov)).

Information from this release will be made available to sensory impaired individuals upon request. Voice phone: 202-691-5200; Federal Relay Service: 1-800-877-8339.