



Transmission of material in this release is embargoed until
8:30 a.m. (ET) Friday, July 14, 2023

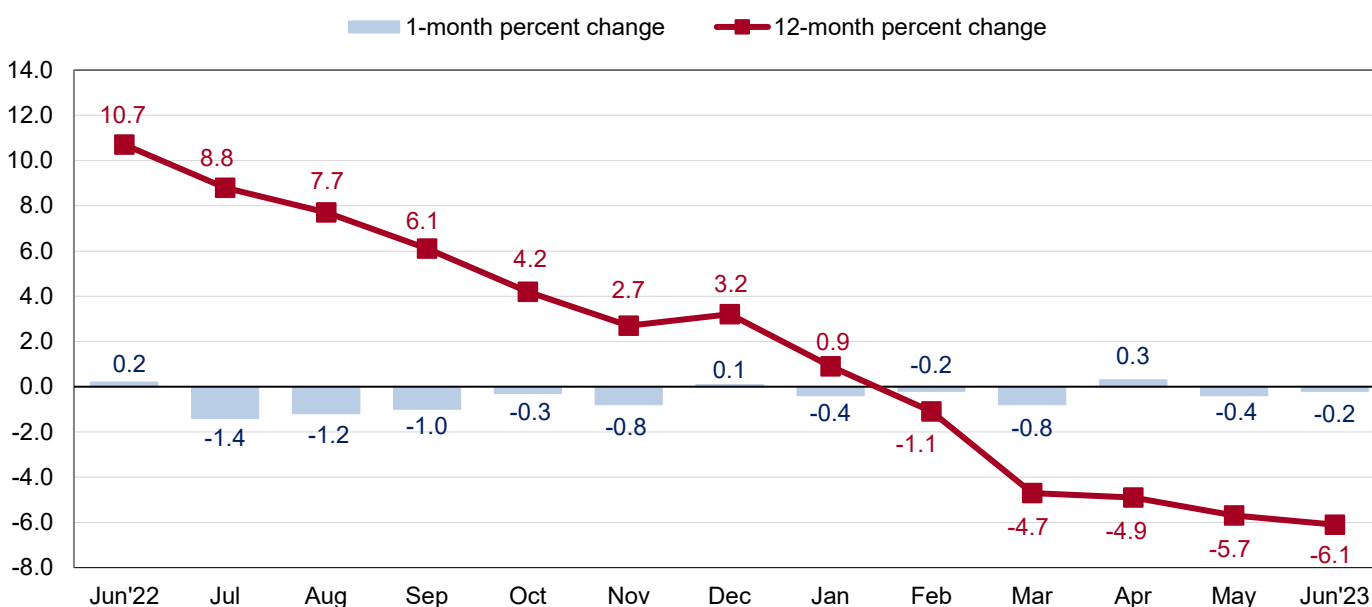
USDL-23-1526

Technical information: (202) 691-7101 • MXPinfo@bls.gov • www.bls.gov/mxp
Media contact: (202) 691-5902 • PressOffice@bls.gov

U.S. IMPORT AND EXPORT PRICE INDEXES – JUNE 2023

The price index for U.S. imports fell 0.2 percent in June following a 0.4-percent decline in May, the U.S. Bureau of Labor Statistics reported today. Lower nonfuel prices in June more than offset higher fuel prices. Prices for U.S. exports decreased 0.9 percent in June, after declining 1.9 percent the previous month.

Chart 1. One-month and 12-month percent changes in the Import Price Index: June 2022 – June 2023



Imports

U.S. import prices decreased 0.2 percent in June and have fallen in 5 of the first 6 months of 2023, after rising 3.2 percent in 2022. Prices for U.S. imports declined 6.1 percent over the past year, the largest 12-month drop since the year ended May 2020. (See table 1.)

Fuel Imports: Prices for import fuel rose 0.8 percent in June following a 4.3-percent decline the previous month. Higher petroleum prices in June more than offset lower natural gas prices. Despite the June advance, import fuel prices fell 36.4 percent over the past year, the largest 12-month drop since a 37.5-percent decrease in June 2020. The price index for petroleum rose 1.1 percent in June, after falling 3.8 percent in May. Petroleum prices declined 35.1 percent for the year ended in June. In contrast, natural gas prices decreased in June, falling 5.6 percent following a 20.9-percent drop the previous month. Prices for import natural gas declined 78.4 percent from January to June, driving the index down 70.8 percent over the past 12 months. The 12-month decrease was the largest over-the-year drop since the 12-month percent change series was first published in September 1982.

All Imports Excluding Fuel: The price index for nonfuel imports declined 0.4 percent in June, after being unchanged the previous month. Lower prices for nonfuel industrial supplies and materials; consumer goods; capital goods; foods, feeds, and beverages; and automotive vehicles all contributed to the overall decline in June. Prices for nonfuel imports decreased 1.4 percent for the year ended in June.

Foods, Feeds, and Beverages: Prices for foods, feeds, and beverages fell 0.3 percent in June following a 1.3-percent drop in May. Lower prices for fish and shellfish in June more than offset higher prices for fruit and meat.

Nonfuel Industrial Supplies and Materials: Nonfuel industrial supplies and materials prices decreased 1.1 percent in June following a 0.2-percent decline the previous month. The June drop was led by lower prices for unfinished metals and nonmetals related to durable goods.

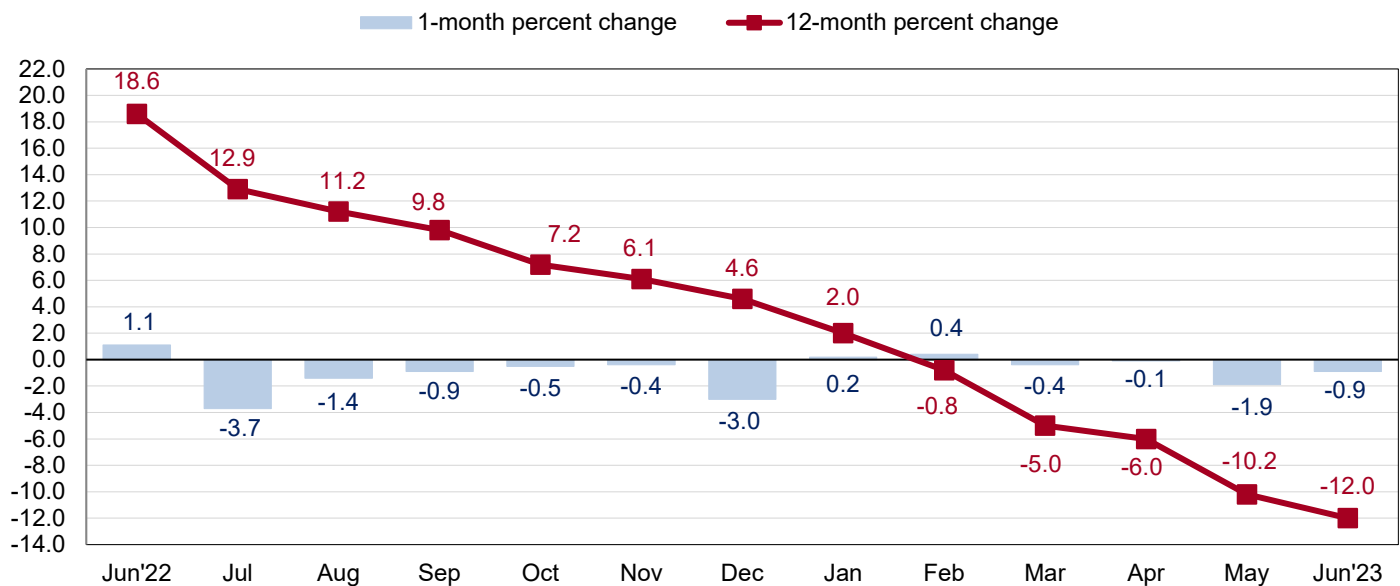
Finished Goods: Prices for each of the major finished goods import categories were down in June. The price index for consumer goods fell 0.3 percent in June following 0.1-percent advances in both May and April. Lower household goods prices contributed to the decrease in June. Capital goods prices edged down 0.1 percent in June, after being unchanged in May. The decline in June was driven by a 0.3-percent drop in computer prices. Prices for automotive vehicles fell 0.1 percent in June following a 0.3-percent increase the previous month. The June decrease was led by lower prices for parts, engines, bodies, and chassis.

Table A. Percent change in Import and Export Price Indexes, selected categories

Month	IMPORTS			EXPORTS		
	All imports	Fuel imports	Nonfuel imports	All exports	Agricultural exports	Non-agricultural exports
2022						
June.....	0.2	5.6	-0.6	1.1	0.0	1.2
July.....	-1.4	-6.9	-0.5	-3.7	-3.2	-3.8
August.....	-1.2	-8.6	-0.2	-1.4	-0.5	-1.4
September.....	-1.0	-6.3	-0.3	-0.9	-0.8	-0.9
October.....	-0.3	-2.2	-0.1	-0.5	-0.6	-0.5
November.....	-0.8	-3.9	-0.3	-0.4	2.8	-0.9
December.....	0.1	-2.3	0.4	-3.0	-2.4	-3.1
2023						
January.....	-0.4	-4.8	0.2	0.2	-0.8	0.3
February.....	-0.2	-5.6	0.4	0.4	0.8	0.3
March.....	-0.8	-4.4	-0.5	-0.4	-1.8	-0.2
April.....	0.3	4.6 ^r	-0.1 ^r	-0.1	0.4	-0.1
May.....	-0.4 ^r	-4.3 ^r	0.0 ^r	-1.9	-2.4 ^r	-1.9 ^r
June.....	-0.2	0.8	-0.4	-0.9	-1.6	-0.9
June 2021 to 2022.....	10.7	73.2	4.6	18.6	15.3	19.0
June 2022 to 2023.....	-6.1	-36.4	-1.4	-12.0	-9.8	-12.4

r Revised

Chart 2. One-month and 12-month percent changes in the Export Price Index: June 2022 – June 2023



Exports

The price index for U.S. exports declined 0.9 percent in June, after falling 1.9 percent the previous month. Lower prices for nonagricultural exports and agricultural exports in June each contributed to the overall decrease. U.S. export prices fell 12.0 percent from June 2022 to June 2023, the largest over-the-year decline since the 12-month percent change series was first published in September 1984. (See table 2.)

Agricultural Exports: Prices for agricultural exports fell 1.6 percent in June following a 2.4-percent decline the previous month. Lower prices in June for soybeans, fruit, and nuts more than offset higher meat prices. The price index for agricultural exports decreased 9.8 percent for the year ended in June, the largest over-the-year decline since a 10.7-percent drop from March 2015 to March 2016.

All Exports Excluding Agriculture: Nonagricultural prices decreased 0.9 percent in June following a 1.9-percent drop in May. Lower prices for nonagricultural industrial supplies and materials and nonagricultural foods in June more than offset higher prices for capital goods, consumer goods, and automotive vehicles. Prices for nonagricultural exports declined 12.4 percent over the past 12 months, the largest over-the-year drop since the 12-month percent change series was first published in March 1986.

Nonagricultural Industrial Supplies and Materials: Prices for nonagricultural industrial supplies and materials declined 2.4 percent in June, after falling 4.6 percent in May. The 7.2-percent drop in the second quarter of 2023 was the largest 3-month decrease since January 2023. The June drop was led by lower prices for fuels, chemicals, and nonferrous metals.

Finished Goods: Prices for each of the major finished goods export categories were up in June. Capital goods prices advanced 0.2 percent, after ticking up 0.1 percent in May. The June increase was driven by a 1.8-percent rise in the price index for transportation equipment excluding motor vehicles. Prices for consumer goods advanced 0.1 percent in June following a 0.2-percent increase the previous month. The June rise was led by a 3.9-percent advance in jewelry prices. Automotive vehicles prices rose 0.1 percent for the second consecutive month in June. Higher prices for parts, engines, bodies, and chassis contributed to the increases in June and May.

More information for the major import and export price indexes can be found at www.bls.gov/web/ximpim/largest.htm.

Measures of Import and Export Prices by Locality

Imports by Locality of Origin: Import prices from China declined 0.4 percent for the third consecutive month in June, led by a 0.7-percent decrease in prices for computer and electronic product manufacturing. Prices for imports from China have not recorded a monthly advance since October 2022. The price index for imports from China decreased 2.3 percent over the past year, the largest 12-month drop since November 2009. In contrast, import prices from Japan ticked up 0.1 percent in June, after declining 0.2 percent the previous month. Prices for imports from Japan advanced 0.6 percent over the past 12 months. The price index for imports from Canada fell 0.8 percent in June following a 1.0-percent drop in May. Import prices from Canada decreased 21.9 percent for the year ended in June, the largest 12-month decline since a 26.0-percent drop in May 2020. Prices for imports from the European Union decreased 0.3 percent in June and import prices from Mexico increased 0.2 percent over the same period. (See table 7.)

Exports by Locality of Destination: Prices for exports to China declined 1.1 percent in June, after falling 2.3 percent the previous month. Export prices to China decreased 14.1 percent over the past 12 months. The price index for exports to Japan fell 1.5 percent in June following a 3.1-percent decline in May. Prices for exports to Japan decreased 14.3 percent for the year ended in June, the largest over-the-year drop since the 12-month percent change series was first published in December 2018. Export prices to Canada were unchanged in June following a 0.9-percent decline the previous month. The price index for exports to the European Union fell 0.5 percent in June and prices for exports to Mexico decreased 0.4 percent over the same period. (See table 8.)

Terms of Trade Indexes: Terms of trade indexes are based on country, region, or grouping and measure the change in the purchasing power of exports relative to imports. U.S. terms of trade with China fell 0.7 percent in June, after declining 2.0 percent in May. Lower export prices to China in June more than offset lower import prices from China. The index for U.S. terms of trade with China fell 12.1 percent over the past 12 months, the largest over-the-year drop since the 12-month percent change series was first published in December 2018. U.S. terms of trade with Japan decreased 1.7 percent in June and fell 14.9 percent over the past year. The indexes for U.S. terms of trade with the European Union and Mexico declined 0.3 percent and 0.5 percent, respectively, in June. In contrast, U.S. terms of trade with Canada advanced 0.7 percent in June and rose 22.6 percent for the year ended in June. (See table 9.)

Import and Export Services

Imports: Import air passenger fares rose 10.0 percent in June following an 8.0-percent increase the previous month. The June advance was the largest monthly rise in import air passenger fares since June 2022. The June 2023 increase was primarily driven by an 11.6-percent advance in European fares. Import air passenger fares rose 6.2 percent for the year ended in June. Import air freight prices increased 4.0 percent in June, after decreasing 4.0 percent in May. The June advance was led by a 4.7-percent rise in Asian air freight prices. Despite the June increase, import air freight prices declined 33.8 percent over the past year. (See table 10.)

Exports: The index for export air passenger fares advanced 9.3 percent in June following a 5.5-percent drop in May. The June increase was the largest 1-month rise since a 12.4-percent advance in January 2023. Higher Latin American/Caribbean and European fares primarily drove the June increase. Export air passenger fares rose 4.2 percent from June 2022 to June 2023. Export air freight prices fell 4.6 percent in June, after declining 3.8 percent the previous month. Prices for export air freight decreased 19.0 percent over the past 12 months, the largest over-the-year drop since the 12-month percent change series was first published in December 1997.

U.S. Import and Export Price Index data for July 2023 are scheduled for release on Tuesday, August 15, 2023, at 8:30 a.m. (ET).

Table 1. U.S. import price indexes and percent changes for selected categories of goods: June 2022 to June 2023

[2000=100, unless otherwise noted]

Description	End Use	Relative importance May 2023 ¹	Index		Percent change				
			May 2023	Jun. 2023	Annual Jun. 2022 to Jun. 2023	Monthly			
						Feb. 2023 to Mar. 2023	Mar. 2023 to Apr. 2023	Apr. 2023 to May 2023	May 2023 to Jun. 2023
All commodities		100.000	139.7	139.4	-6.1	-0.8	0.3	-0.4	-0.2
All imports excluding food and fuels (Dec. 2010=100)		84.207	108.6	108.2	-1.5	-0.4	0.0	0.0	-0.4
All imports excluding petroleum		91.720	123.9	123.5	-2.0	-0.6	-0.2	-0.2	-0.3
All imports excluding fuels (Dec. 2001=100)		91.229	127.9	127.4	-1.4	-0.5	-0.1	0.0	-0.4
Foods, feeds, & beverages	0	7.022	208.6	207.9	-1.0	-1.0	-0.5	-1.3	-0.3
Agricultural foods, feeds & beverages, excluding distilled beverages.....	00	5.576	229.2	229.4	0.3	-1.4	-0.1	-1.4	0.1
Nonagricultural foods (fish, distilled beverages).....	01	1.446	160.4	157.3	-6.4	0.5	-1.9	-0.9	-1.9
Industrial supplies & materials	1	24.670	243.6	242.6	-20.5	-2.5	1.6	-1.7	-0.4
Industrial supplies & materials excluding petroleum.....		16.498	205.3	202.9	-11.6	-2.4	-0.7	-0.6	-1.2
Industrial supplies & materials excluding fuels (Dec. 2001=100).....		15.913	230.7	228.1	-8.5	-1.5	-0.1	-0.2	-1.1
Industrial supplies & materials, durable....		10.085	225.6	220.9	-8.5	-1.4	-0.2	0.0	-2.1
Industrial supplies & materials nondurable excluding petroleum.....		6.304	181.7	182.2	-15.4	-3.9	-1.3	-1.5	0.3
Fuels & lubricants.....	10	8.771	271.9	274.1	-36.4	-4.4	4.6	-4.3	0.8
Petroleum & petroleum products.....	100	8.280	293.1	296.2	-35.1	-3.0	5.9	-3.8	1.1
Crude petroleum.....	10000	5.223	300.2	298.5	-36.9	-1.7	7.9	-2.2	-0.6
Fuels, n.e.s.-coals & gas.....	101	0.356	146.8	140.8	-62.5	-23.1	-15.7	-15.3	-4.1
Natural gas.....	10110	0.246	118.1	111.5	-70.8	-28.8	-18.9	-20.9	-5.6
Paper & paper base stocks.....	11	0.530	140.9	145.7	6.4	-2.2	-2.8	0.9	3.4
Materials associated with nondurable supplies & materials.....	12	5.283	200.0	200.6	-9.8	-1.5	0.4	-0.6	0.3
Selected building materials.....	13	1.719	187.1	184.9	-15.3	-0.1	-2.5	-0.4	-1.2
Unfinished metals related to durable goods.....	14	4.176	342.9	331.1	-13.2	-3.1	0.2	0.3	-3.4
Finished metals related to durable goods.....	15	2.362	218.9	217.8	1.3	-0.8	1.4	0.0	-0.5
Nonmetals related to durable goods.....	16	1.828	127.7	125.2	-2.9	0.3	-1.2	-0.2	-2.0
Capital goods	2	27.894	93.6	93.5	0.6	-0.1	-0.1	0.0	-0.1
Electric generating equipment.....	20	3.755	129.6	129.5	0.5	-0.1	-0.1	0.2	-0.1
Nonelectrical machinery.....	21	22.735	84.6	84.5	0.4	0.0	-0.2	0.0	-0.1
Transportation equipment excluding motor vehicles (Dec. 2001=100).....	22	1.404	152.7	152.6	6.3	0.7	1.0	0.2	-0.1
Automotive vehicles, parts & engines	3	12.867	118.0	117.9	1.6	-0.2	0.1	0.3	-0.1
Consumer goods, excluding automotives	4	27.547	110.4	110.1	0.1	-0.3	0.1	0.1	-0.3
Nondurables, manufactured.....	40	12.874	125.6	125.5	0.6	-0.1	0.2	0.2	-0.1
Durables, manufactured.....	41	13.666	95.6	95.3	0.0	-0.1	0.0	0.0	-0.3
Nonmanufactured consumer goods.....	42	1.006	129.5	126.5	-4.3	-4.4	1.1	0.1	-2.3

¹ Relative importance figures are based on 2021 trade values.

NOTES: Data may be revised in each of the 3 months after original publication.

Dash = Not available

Table 2. U.S. export price indexes and percent changes for selected categories of goods: June 2022 to June 2023

[2000=100, unless otherwise noted]

Description	End Use	Relative importance May 2023 ¹	Index		Percent change				
			May 2023	Jun. 2023	Annual	Monthly			
					Jun. 2022 to Jun. 2023	Feb. 2023 to Mar. 2023	Mar. 2023 to Apr. 2023	Apr. 2023 to May 2023	May 2023 to Jun. 2023
All commodities.....		100.000	148.1	146.7	-12.0	-0.4	-0.1	-1.9	-0.9
Agricultural commodities.....		11.044	243.2	239.3	-9.8	-1.8	0.4	-2.4	-1.6
All exports excluding food and fuels (Dec. 2010=100).....		74.395	115.1	114.5	-1.2	0.0	0.1	0.1	-0.5
All exports excluding fuels (June 2022=100).....		84.563	99.9	99.3	-0.7	-0.1	0.2	-0.3	-0.6
Nonagricultural commodities.....		88.956	140.8	139.6	-12.4	-0.2	-0.1	-1.9	-0.9
Foods, feeds, & beverages.....	0	10.169	245.7	241.4	-9.5	-2.0	0.4	-2.4	-1.8
Agricultural foods, feeds & beverages, excluding distilled beverages.....	00	9.760	247.8	243.6	-9.4	-1.9	0.5	-2.4	-1.7
Nonagricultural foods (fish, distilled beverages).....	01	0.409	206.1	198.5	-12.1	-2.7	-3.6	-0.6	-3.7
Industrial supplies & materials.....	1	37.717	197.3	192.7	-26.4	-0.8	-0.4	-4.5	-2.3
Industrial supplies & materials, durable....		11.176	215.6	211.6	-5.5	-1.0	1.3	-0.6	-1.9
Industrial supplies & materials, nondurable.....		26.541	187.7	183.0	-32.3	-0.7	-1.1	-6.1	-2.5
Agricultural industrial supplies & materials.....	10	1.284	221.9	220.0	-12.5	-1.1	-0.6	-1.8	-0.9
Nonagricultural industrial supplies & materials.....		36.433	196.6	191.9	-26.8	-0.8	-0.4	-4.6	-2.4
Fuels & lubricants.....	11	15.437	226.7	220.0	-42.4	-1.1	-1.1	-10.2	-3.0
Nonagricultural supplies & materials excluding fuels & building materials....	12	20.184	198.9	195.0	-8.1	-0.5	0.2	0.0	-2.0
Selected building materials.....	13	0.812	148.3	146.2	-14.4	0.0	-1.4	-0.3	-1.4
Capital goods.....	2	30.979	121.1	121.4	2.5	0.3	0.2	0.1	0.2
Electrical generating equipment.....	20	3.466	137.6	137.4	4.5	0.2	0.1	0.1	-0.1
Nonelectrical machinery.....	21	22.704	101.6	101.6	1.2	0.3	0.1	0.1	0.0
Transportation equipment excluding motor vehicles (Dec. 2001=100).....	22	4.809	206.9	210.7	7.6	0.4	0.7	0.0	1.8
Automotive vehicles, parts & engines.....	3	8.219	123.6	123.7	2.5	0.1	-0.4	0.1	0.1
Consumer goods, excluding automotives.....	4	12.917	119.6	119.7	2.7	0.3	0.3	0.2	0.1
Nondurables, manufactured.....	40	6.824	110.9	110.9	0.8	-0.1	0.5	0.2	0.0
Durables, manufactured.....	41	4.813	119.4	119.9	5.3	0.7	0.3	0.2	0.4
Nonmanufactured consumer goods (Dec. 2018=100).....	42	1.280	131.5	130.4	3.2	0.1	-0.2	-0.1	-0.8

¹ Relative importance figures are based on 2021 trade values.

NOTES: Data may be revised in each of the 3 months after original publication.

Dash = Not available

Table 3. U.S. import price indexes and percent changes for selected industries: June 2022 to June 2023
 [December 2005=100, unless otherwise noted]

Description	NAICS	Relative importance May 2023 ¹	Index		Percent change				
			May 2023	Jun. 2023	Annual Jun. 2022 to Jun. 2023	Monthly			
						Feb. 2023 to Mar. 2023	Mar. 2023 to Apr. 2023	Apr. 2023 to May 2023	May 2023 to Jun. 2023
Nonmanufacturing		8.031	142.6	141.1	-31.9	-4.2	4.6	-3.6	-1.1
Agriculture, forestry, fishing and hunting	11	2.108	209.2	207.0	-3.0	-4.6	-0.1	-2.9	-1.1
Crop production.....	111	1.674	216.1	214.2	-5.1	-5.7	-0.8	-2.4	-0.9
Animal production (Dec. 2022=100).....	112	0.261	110.9	108.7	–	-3.3	3.5	-5.2	-2.0
Mining	21	5.923	138.1	136.8	-38.2	-4.1	6.4	-3.8	-0.9
Oil and gas extraction.....	211	5.610	135.4	134.1	-39.8	-4.2	5.7	-3.4	-1.0
Mining (except oil and gas) (Dec. 2022=100).....	212	0.313	125.5	123.4	–	-1.6	18.2	-11.8	-1.7
Manufacturing		91.585	122.5	122.3	-2.6	-0.5	0.1	-0.2	-0.2
Manufacturing, part 1	31	11.475	139.3	139.0	0.4	-0.2	0.4	-0.1	-0.2
Food manufacturing.....	311	4.269	189.1	188.2	-0.3	-0.4	0.8	-0.4	-0.5
Beverage and tobacco product manufacturing.....	312	1.179	139.9	139.8	4.0	0.7	0.2	0.1	-0.1
Apparel manufacturing.....	315	3.223	119.3	119.1	1.7	-0.3	0.3	-0.1	-0.2
Leather and allied product manufacturing.....	316	1.371	126.7	126.9	-0.4	-0.1	0.2	0.2	0.2
Manufacturing, part 2	32	19.883	142.9	143.6	-9.7	-1.3	0.1	-0.8	0.5
Paper manufacturing.....	322	0.974	123.3	125.0	1.9	-1.3	-1.4	0.4	1.4
Petroleum and coal products manufacturing.....	324	2.870	132.6	138.5	-28.9	-5.2	3.2	-6.6	4.4
Chemical manufacturing.....	325	11.232	152.1	152.1	-5.9	-0.8	-0.1	0.1	0.0
Plastics and rubber products manufacturing.....	326	2.664	134.8	134.4	1.1	0.2	0.1	0.8	-0.3
Nonmetallic mineral product manufacturing.....	327	1.070	145.0	144.0	1.7	0.2	0.2	0.6	-0.7
Manufacturing, part 3	33	60.227	113.1	112.7	-0.5	-0.4	0.0	0.1	-0.4
Primary metal manufacturing.....	331	4.996	232.5	226.0	-9.0	-3.0	0.4	0.6	-2.8
Fabricated metal product manufacturing... ..	332	3.339	149.5	148.9	-1.6	0.0	0.3	-0.2	-0.4
Machinery manufacturing.....	333	7.743	131.9	131.7	3.8	0.2	0.2	0.3	-0.2
Computer and electronic product manufacturing.....	334	16.807	72.9	72.7	-1.8	-0.4	-0.5	-0.3	-0.3
Electrical equipment, appliance, and component manufacturing.....	335	5.989	127.7	127.6	0.6	0.2	0.2	0.2	-0.1
Transportation equipment manufacturing... ..	336	13.058	117.0	116.9	1.8	0.0	0.1	0.3	-0.1
Furniture and related product manufacturing.....	337	2.019	129.2	129.5	2.7	-0.1	-0.1	0.3	0.2
Miscellaneous manufacturing.....	339	6.277	128.4	128.1	0.9	0.2	0.2	0.4	-0.2

¹ Relative importance figures are based on 2021 trade values.

NOTES: Data may be revised in each of the 3 months after original publication.

Dash = Not available

Table 4. U.S. export price indexes and percent changes for selected industries: June 2022 to June 2023
 [December 2005=100, unless otherwise noted]

Description	NAICS	Relative importance May 2023 ¹	Index		Percent change				
			May 2023	Jun. 2023	Annual Jun. 2022 to Jun. 2023	Monthly			
						Feb. 2023 to Mar. 2023	Mar. 2023 to Apr. 2023	Apr. 2023 to May 2023	May 2023 to Jun. 2023
Nonmanufacturing		14.372	170.9	163.3	-36.8	-2.6	-0.2	-7.7	-4.4
Agriculture, forestry, fishing and hunting	11	5.548	208.8	202.8	-17.7	-3.0	0.2	-3.7	-2.9
Crop production.....	111	5.234	221.9	215.4	-18.1	-3.1	0.3	-3.8	-2.9
Mining	21	8.824	100.7	95.3	-45.4	-2.4	-0.4	-10.1	-5.4
Oil and gas extraction (Dec. 2021=100)...	211	7.360	86.7	82.5	-47.9	-3.2	-0.9	-10.6	-4.8
Mining (except oil and gas).....	212	1.465	148.5	136.0	-24.6	2.1	2.0	-7.0	-8.4
Manufacturing		83.879	134.0	133.6	-5.8	0.0	0.0	-0.9	-0.3
Manufacturing, part 1	31	7.018	174.2	173.5	-2.7	-0.8	0.2	-0.9	-0.4
Food manufacturing.....	311	5.176	204.9	204.3	-3.0	-1.1	0.2	-1.0	-0.3
Beverage and tobacco product manufacturing.....	312	0.552	148.4	144.5	-1.9	0.0	0.7	-1.3	-2.6
Manufacturing, part 2	32	26.218	136.2	135.3	-18.0	0.4	-0.8	-2.7	-0.7
Wood product manufacturing (Dec. 2017=100).....	321	0.412	116.7	114.6	-19.9	0.0	-1.0	-0.1	-1.8
Paper manufacturing.....	322	1.579	146.5	143.8	-4.4	-2.4	-3.2	-2.5	-1.8
Petroleum and coal products manufacturing.....	324	6.326	144.0	144.4	-39.6	0.9	-1.8	-10.9	0.3
Chemical manufacturing.....	325	14.655	135.9	134.4	-7.1	0.4	-0.1	0.6	-1.1
Plastics and rubber products manufacturing.....	326	2.288	133.2	132.9	1.8	0.2	-0.4	0.2	-0.2
Nonmetallic mineral product manufacturing.....	327	0.763	130.9	130.9	-3.0	0.1	0.0	0.1	0.0
Manufacturing, part 3	33	50.642	128.9	128.9	1.7	-0.1	0.3	0.1	0.0
Primary metal manufacturing.....	331	4.434	208.7	204.7	-8.3	-3.1	3.0	-0.5	-1.9
Machinery manufacturing.....	333	9.563	149.1	149.1	5.2	0.5	0.4	0.1	0.0
Computer and electronic product manufacturing.....	334	12.951	83.6	83.5	-1.6	-0.1	0.0	0.0	-0.1
Electrical equipment, appliance, and component manufacturing.....	335	3.599	135.9	135.7	4.6	0.0	0.2	0.2	-0.1
Transportation equipment manufacturing..	336	12.075	142.4	143.5	4.4	0.1	0.0	0.0	0.8
Miscellaneous manufacturing.....	339	4.966	138.5	138.7	4.8	0.9	0.2	0.3	0.1

¹ Relative importance figures are based on 2021 trade values.

NOTES: Data may be revised in each of the 3 months after original publication.

Dash = Not available

Table 5. U.S. import price indexes and percent changes for selected categories of goods: June 2022 to June 2023

[2000=100, unless otherwise noted]

Description	Harmonized system	Relative importance May 2023 ¹	Index		Percent change				
			May 2023	Jun. 2023	Annual	Monthly			
					Jun. 2022 to Jun. 2023	Feb. 2023 to Mar. 2023	Mar. 2023 to Apr. 2023	Apr. 2023 to May 2023	May 2023 to Jun. 2023
Live animals; animal products.....	I	1.569	236.2	233.6	-1.8	-0.3	1.3	-1.7	-1.1
Meat and edible meat offal.....	02	0.405	321.4	325.9	-4.9	1.0	4.7	2.1	1.4
Fish and crustaceans, molluscs and other aquatic invertebrates.....	03	0.813	156.6	151.5	-8.2	1.0	-3.3	-1.8	-3.3
Vegetable products.....	II	2.141	245.7	243.3	-3.0	-4.0	0.0	-2.1	-1.0
Edible vegetables, roots, and tubers.....	07	0.527	471.6	461.8	10.3	-1.8	-3.4	4.5	-2.1
Edible fruit and nuts; peel of citrus fruit or melons.....	08	0.727	115.3	116.1	-9.2	-4.9	-0.4	-7.4	0.7
Coffee, tea, mate and spices.....	09	0.396	306.2	304.4	-5.3	0.4	-0.2	0.3	-0.6
Animal or vegetable fats and oils (Dec. 2009=100).....	III	0.381	146.5	144.5	-9.9	-2.8	1.2	-1.2	-1.4
Prepared foodstuffs, beverages, and tobacco.....	IV	3.368	194.8	195.4	4.4	0.6	-0.2	0.1	0.3
Sugars and sugar confectionary (Dec. 2021=100).....	17	0.214	114.3	114.0	8.5	0.8	0.9	0.5	-0.3
Cocoa and cocoa preparations (Dec. 2009=100).....	18	0.239	118.4	121.3	19.3	2.1	5.3	-2.8	2.4
Miscellaneous edible preparations (Dec. 2022=100).....	21	0.393	97.8	98.2	-	0.5	-3.2	0.5	0.4
Beverages, spirits, and vinegar.....	22	1.113	153.7	153.4	3.7	0.9	0.3	0.2	-0.2
Mineral products.....	V	8.907	279.9	282.3	-35.7	-4.4	5.3	-4.8	0.9
Mineral fuels, oils and residuals, bituminous substances and mineral waxes.....	27	8.518	271.3	273.9	-36.9	-4.6	4.8	-4.5	1.0
Products of the chemical or allied industries.....	VI	10.688	173.7	173.4	-3.5	-1.0	-0.2	0.3	-0.2
Inorganic chemicals.....	28	0.630	519.2	518.9	-6.9	-3.0	-1.1	0.1	-0.1
Organic chemicals.....	29	2.427	147.0	146.7	-4.7	-1.3	-0.2	0.6	-0.2
Pharmaceutical products.....	30	5.282	148.5	148.3	-0.3	0.0	0.3	0.1	-0.1
Fertilizers (Dec. 2022=100).....	31	0.374	69.8	70.6	-	-9.9	-5.8	-0.9	1.1
Tanning extracts; dye, pigments, varnish, paints & putty (Dec. 2022=100).....	32	0.208	102.9	102.0	-	-1.1	-1.4	2.2	-0.9
Miscellaneous chemical products.....	38	0.847	122.6	121.2	2.7	-0.9	-0.2	0.9	-1.1
Plastics and articles thereof; rubber and articles thereof.....	VII	4.176	158.5	158.7	-2.2	0.7	0.4	0.0	0.1
Plastics and articles thereof.....	39	2.721	158.2	158.4	-4.4	1.1	0.3	-0.4	0.1
Rubber and articles thereof.....	40	1.455	162.1	162.6	2.5	-0.1	0.6	0.7	0.3
Woodpulp, recovered paper, and paper products.....	X	0.970	129.4	132.0	1.4	-1.1	-2.2	0.7	2.0
Textile and textile articles.....	XI	4.452	121.2	121.0	0.7	-0.1	0.2	0.2	-0.2
Articles of apparel and clothing accessories, not knitted or crocheted.....	62	1.228	127.4	127.0	0.7	0.1	0.2	-0.2	-0.3
Headgear, umbrellas, artificial flowers, etc.....	XII	1.203	126.6	126.8	0.5	-0.1	0.2	0.2	0.2
Footwear and parts of such articles.....	64	0.953	123.4	123.7	0.3	-0.1	0.2	0.3	0.2
Stone, plaster, cement, asbestos, ceramics, glass etc.....	XIII	0.937	137.9	137.5	2.1	0.4	0.5	0.6	-0.3
Articles of stone, plaster, cement, asbestos, or mica (Dec. 2020=100).....	68	0.345	102.9	102.9	0.9	0.3	0.1	0.2	0.0
Glass and glassware (Dec. 2021=100).....	70	0.326	107.1	106.7	4.8	0.7	1.9	0.8	-0.4
Pearls, stones, precious metals, imitation jewelry, and coins.....	XIV	3.387	237.9	232.2	-1.3	-4.4	2.6	1.6	-2.4

See footnotes at end of table.

Table 5. U.S. import price indexes and percent changes for selected categories of goods: June 2022 to June 2023 — Continued

[2000=100, unless otherwise noted]

Description	Harmoni- zied system	Relative importance May 2023 ¹	Index		Percent change				
			May 2023	Jun. 2023	Annual	Monthly			
					Jun. 2022 to Jun. 2023	Feb. 2023 to Mar. 2023	Mar. 2023 to Apr. 2023	Apr. 2023 to May 2023	May 2023 to Jun. 2023
Base metals and articles of base metals. . .	XV	6.349	236.9	233.3	-8.2	-0.2	-0.7	-0.5	-1.5
Articles of iron or steel.....	73	1.899	206.1	202.8	-2.0	0.4	0.1	-0.7	-1.6
Copper and articles thereof.....	74	0.541	378.0	370.3	-11.3	-0.3	-1.4	-2.8	-2.0
Aluminum and articles thereof.....	76	1.077	191.6	190.2	-9.7	-2.7	-0.6	-0.3	-0.7
Tools, implements, cutlery, spoons and forks, of base metal; parts thereof.....	82	0.449	131.9	131.9	1.3	0.4	-0.1	-0.2	0.0
Miscellaneous articles of base metal.....	83	0.552	148.4	147.5	-3.1	-0.1	-1.2	-0.3	-0.6
Machinery, electrical equipment, TV image and sound recorders, parts, etc.....	XVI	29.992	82.7	82.6	-0.1	-0.1	-0.2	0.0	-0.1
Machinery and mechanical appliances; parts thereof.....	84	15.270	89.6	89.5	0.4	-0.2	-0.4	0.0	-0.1
Electrical machinery and equip, sound and TV recorders & reproducers, parts.....	85	14.722	76.2	76.1	-0.7	0.0	0.0	-0.1	-0.1
Vehicles, aircraft, vessels and associated transport equipment.....	XVII	10.873	121.6	121.6	1.8	-0.2	0.0	0.2	0.0
Motor vehicles and their parts.....	87	10.246	120.7	120.6	1.6	-0.1	-0.1	0.2	-0.1
Aircraft, spacecraft, and parts thereof (Dec. 2020=100).....	88	0.516	108.3	108.0	4.7	0.3	0.0	0.0	-0.3
Optical, photo, measuring, medical & musical instruments; & timepieces.....	XVIII	4.152	108.0	108.0	2.6	0.6	0.6	0.2	0.0
Optical, photographic, measuring and medical instruments.....	90	3.863	103.7	103.7	2.3	0.7	0.6	0.1	0.0
Miscellaneous manufactured articles.....	XX	4.850	120.3	120.3	1.9	0.0	0.1	0.0	0.0
Furniture & stuffed furnishings; lamps & lighting fittings, nesoi; prefab bldgs.....	94	2.758	127.6	127.7	1.7	-0.2	0.2	-0.2	0.1
Toys, games and sports equipment; parts and accessories thereof.....	95	1.791	106.7	106.6	0.9	0.2	-0.2	0.3	-0.1
Miscellaneous manufactured articles.....	96	0.301	147.3	147.3	8.9	0.2	0.4	0.0	0.0

¹ Relative importance figures are based on 2021 trade values.

NOTES: Data may be revised in each of the 3 months after original publication.

Dash = Not available

Table 6. U.S. export price indexes and percent changes for selected categories of goods: June 2022 to June 2023

[2000=100, unless otherwise noted]

Description	Harmoni- zied system	Relative importance May 2023 ¹	Index		Percent change				
			May 2023	Jun. 2023	Annual	Monthly			
					Jun. 2022 to Jun. 2023	Feb. 2023 to Mar. 2023	Mar. 2023 to Apr. 2023	Apr. 2023 to May 2023	May 2023 to Jun. 2023
Live animals; animal products.....	I	2.104	262.8	259.9	-10.5	-2.0	-0.3	-0.5	-1.1
Meat & edible meat offal (Dec. 2006=100)...	02	1.346	218.2	220.2	-6.0	1.8	1.7	1.3	0.9
Fish and crustaceans, mollusks and aquatic invertebrates (Dec. 2022=100).....	03	0.262	88.0	83.2	-	-4.4	-5.3	-0.9	-5.5
Vegetable products.....	II	5.309	277.4	269.2	-15.8	-2.9	0.6	-4.0	-3.0
Edible fruit and nuts; peel of citrus fruit or melons.....	08	0.871	143.7	137.2	-6.5	0.6	0.8	3.5	-4.5
Cereals.....	10	1.887	302.8	300.8	-19.5	-4.7	1.4	-7.1	-0.7
Oilseeds and misc. grains, seeds, fruits, plants, straw and fodder.....	12	2.053	297.3	278.5	-19.7	-2.5	-0.7	-3.8	-6.3
Prepared foodstuffs, beverages, and tobacco.....	IV	3.070	187.7	187.6	3.5	-0.4	0.6	-0.9	-0.1
Miscellaneous edible preparations (Dec. 2017=100).....	21	0.680	117.1	117.3	9.3	0.4	0.0	-0.1	0.2
Beverages, spirits, and vinegar (Dec. 2008=100).....	22	0.477	109.5	109.3	0.5	0.6	0.0	0.2	-0.2
Residues and waste from the food industries; prepared animal feed.....	23	0.799	311.8	305.8	-5.8	-3.1	1.8	-3.4	-1.9
Mineral products.....	V	15.203	271.2	263.0	-43.0	-1.1	-0.9	-10.4	-3.0
Ores, slag and ash (Dec. 2012=100).....	26	0.523	138.1	131.2	-10.9	0.1	1.9	-5.3	-5.0
Mineral fuels, oils and residuals, bituminous substances and mineral waxes.....	27	14.457	258.4	250.7	-44.1	-1.1	-1.0	-10.7	-3.0
Products of the chemical or allied industries.....	VI	13.097	164.6	163.3	-1.8	-0.1	-0.2	0.7	-0.8
Pharmaceutical products.....	30	4.495	108.3	108.3	1.3	-0.1	0.7	0.5	0.0
Essential oils and resinoids; perfumery cosmetic or toilet preparations.....	33	0.879	149.2	149.4	6.9	-0.1	1.4	0.0	0.1
Soap; lubricants; waxes, polishing or scouring products; candles, pastes.....	34	0.479	136.3	136.3	3.4	0.0	0.0	0.0	0.0
Miscellaneous chemical products.....	38	2.328	192.8	192.9	3.4	0.3	0.7	0.5	0.1
Plastics and articles thereof; rubber and articles thereof.....	VII	4.645	159.5	157.7	-10.9	0.9	-0.4	-0.2	-1.1
Plastics and articles thereof.....	39	3.844	157.1	155.2	-12.7	1.0	-0.4	-0.3	-1.2
Rubber and articles thereof.....	40	0.801	168.9	167.9	0.5	0.2	-0.3	0.2	-0.6
Wood, wood charcoal, cork, straw, baskets and wickerwork (Dec. 2014=100).....	IX	0.482	109.3	106.4	-23.9	-0.1	-2.4	-0.5	-2.7
Woodpulp, recovered paper, and paper products.....	X	1.714	145.0	142.8	-8.8	-2.9	-3.0	-2.6	-1.5
Woodpulp and recovered paper (Dec. 2019=100).....	47	0.491	145.8	141.1	-25.0	-1.3	-12.0	-6.6	-3.2
Paper and paperboard; articles of paper pulp, paper or paperboard.....	48	0.981	146.9	145.5	0.6	-4.6	1.8	-1.2	-1.0
Cotton, including yarns and woven fabrics thereof.....	52	0.513	158.6	163.2	-22.9	-3.8	-1.9	-1.7	2.9
Stone, plaster, cement, asbestos, ceramics, glass etc.....	XIII	0.746	146.4	146.4	-0.5	0.0	0.3	0.1	0.0
Glass and glassware (Dec. 2019=100).....	70	0.456	111.0	111.0	0.3	0.0	0.7	0.0	0.0
Pearls, stones, precious metals, imitation jewelry, and coins.....	XIV	4.788	325.5	318.6	-3.4	-3.1	3.2	0.3	-2.1
Base metals and articles of base metals. ...	XV	4.589	212.7	209.7	-4.6	0.9	0.0	-0.9	-1.4
Copper and articles thereof.....	74	0.597	263.4	255.9	-12.0	-4.9	1.3	-2.9	-2.8
Aluminum and articles thereof.....	76	0.690	147.7	145.4	-5.9	-0.3	-1.3	-0.3	-1.6

See footnotes at end of table.

Table 6. U.S. export price indexes and percent changes for selected categories of goods: June 2022 to June 2023 — Continued

[2000=100, unless otherwise noted]

Description	Harmonized system	Relative importance May 2023 ¹	Index		Percent change				
			May 2023	Jun. 2023	Annual	Monthly			
					Jun. 2022 to Jun. 2023	Feb. 2023 to Mar. 2023	Mar. 2023 to Apr. 2023	Apr. 2023 to May 2023	May 2023 to Jun. 2023
Miscellaneous articles of base metal (Dec. 2022=100).....	83	0.320	101.7	101.8	—	2.7	0.1	0.2	0.1
Machinery, electrical equipment, TV image and sound recorders, parts, etc.....	XVI	26.079	106.4	106.7	2.5	0.1	0.2	0.0	0.3
Machinery and mechanical appliances; parts thereof.....	84	15.079	129.5	130.3	4.3	0.2	0.6	0.0	0.6
Electrical machinery and equipment and parts and accessories thereof.....	85	10.999	82.2	82.1	0.1	-0.2	-0.4	0.1	-0.1
Vehicles, aircraft, vessels and associated transport equipment.....	XVII	9.123	150.0	150.0	2.2	0.1	-0.1	0.1	0.0
Motor vehicles and their parts.....	87	6.871	124.7	124.7	1.1	0.0	-0.4	0.0	0.0
Optical, photo, measuring, medical & musical instruments; & timepieces.....	XVIII	5.638	117.1	117.1	2.7	1.2	0.4	0.1	0.0
Miscellaneous manufactured articles.....	XX	1.224	136.7	136.9	6.0	-0.3	0.4	0.0	0.1
Furniture; stuffed furnishings; lamps and lighting fittings nesoi.....	94	0.585	149.9	149.9	-0.2	-0.5	0.8	0.0	0.0
Toys, games and sports equipment; parts and accessories thereof.....	95	0.494	118.3	118.6	17.8	-0.1	0.1	0.3	0.3

¹ Relative importance figures are based on 2021 trade values.

NOTES: Data may be revised in each of the 3 months after original publication.

Dash = Not available

Table 7. U.S. import price indexes and percent changes by locality of origin: June 2022 to June 2023
 [2000=100, unless otherwise noted]

Description	Relative importance May 2023 ¹	Index		Percent change					
		May 2023	Jun. 2023	Annual Jun. 2022 to Jun. 2023	Monthly				
					Feb. 2023 to Mar. 2023	Mar. 2023 to Apr. 2023	Apr. 2023 to May 2023	May 2023 to Jun. 2023	
Industrialized Countries²	100.000	145.1	144.4	-8.4	-0.8	0.9	-0.1	-0.5	
Nonmanufacturing.....	10.889	245.3	241.7	-37.0	-2.3	6.3	-1.3	-1.5	
Manufacturing.....	88.553	136.9	136.5	-2.6	-0.6	0.3	0.1	-0.3	
Canada	100.000	172.2	170.9	-21.9	-1.1	0.9	-1.0	-0.8	
Nonmanufacturing.....	30.945	241.1	237.7	-38.4	-2.3	6.5	-1.4	-1.4	
Manufacturing.....	68.062	157.2	156.7	-10.7	-0.8	-1.4	-0.8	-0.3	
European Union	100.000	155.9	155.5	0.3	-0.4	0.5	0.4	-0.3	
Manufacturing.....	99.212	151.6	151.3	0.7	-0.3	0.4	0.4	-0.2	
France (Dec. 2003=100)	100.000	151.2	151.9	4.5	0.1	3.1	0.3	0.5	
Germany (Dec. 2003=100)	100.000	125.3	124.7	1.0	-1.0	-0.3	0.6	-0.5	
United Kingdom (Dec. 2003=100)	100.000	136.4	135.5	-2.5	-1.0	1.8	-0.3	-0.7	
Latin America³	100.000	168.3	168.5	-4.5	-0.1	0.4	-0.8	0.1	
Nonmanufacturing.....	13.352	305.3	305.0	-24.4	-3.5	3.3	-3.8	-0.1	
Manufacturing.....	86.383	137.3	137.5	0.2	0.5	-0.1	-0.2	0.1	
Mexico (Dec. 2003=100)	100.000	142.4	142.7	-1.7	-0.2	0.6	0.0	0.2	
Nonmanufacturing (Dec. 2008=100).....	8.203	154.4	157.3	-24.5	-2.8	4.3	-0.1	1.9	
Manufacturing (Dec. 2008=100).....	91.535	98.1	98.2	1.9	0.0	0.2	0.1	0.1	
Pacific Rim (Dec. 2003=100)⁴	100.000	103.1	102.8	-2.5	-0.4	-0.3	-0.2	-0.3	
China (Dec. 2003=100)	100.000	102.3	101.9	-2.3	-0.5	-0.4	-0.4	-0.4	
Japan	100.000	100.8	100.9	0.6	-0.4	0.4	-0.2	0.1	
Taiwan (Dec. 2018=100)	100.000	110.4	110.1	-1.9	0.1	-0.4	-0.3	-0.3	
Asian NICs⁵	100.000	94.9	95.0	-6.2	-0.4	-0.8	-1.0	0.1	
ASEAN (Dec. 2003=100)⁶	100.000	102.2	101.8	-4.1	-0.3	0.0	-1.1	-0.4	
Asia Near East (Dec. 2003=100)⁷	100.000	214.2	214.2	-21.4	-1.8	1.6	-2.5	0.0	

¹ Relative importance figures are based on 2021 trade values.

² Western Europe, Canada, Japan, Australia, New Zealand, and South Africa.

³ Mexico, Central America, South America, and the Caribbean.

⁴ China, Japan, Australia, Brunei, Indonesia, Macao, Malaysia, New Zealand, Papua New Guinea, Philippines, and the Asian Newly Industrialized Countries.

⁵ Asian Newly Industrialized Countries - Hong Kong, Singapore, South Korea, and Taiwan.

⁶ Association of Southeast Asian Nations - Brunei, Cambodia, Indonesia, Laos, Malaysia, Myanmar, Philippines, Singapore, Thailand, and Vietnam.

⁷ Bahrain, Iran, Iraq, Israel, Jordan, Kuwait, Lebanon, Oman, Qatar, Saudi Arabia, Syria, United Arab Emirates, and Yemen.

NOTES: Data may be revised in each of the 3 months after original publication.

Regions are not mutually exclusive.

Dash = Not available

Table 8. U.S. export price indexes and percent changes by locality of destination: June 2022 to June 2023
 [December 2017=100, unless otherwise noted]

Description	Relative importance May 2023 ¹	Index		Percent change				
		May 2023	Jun. 2023	Annual Jun. 2022 to Jun. 2023	Monthly			
					Feb. 2023 to Mar. 2023	Mar. 2023 to Apr. 2023	Apr. 2023 to May 2023	May 2023 to Jun. 2023
Industrialized Countries²	100.000	119.1	118.7	-6.8	0.1	0.1	-1.5	-0.3
Nonmanufacturing.....	11.896	130.2	126.8	-34.2	-0.9	0.1	-10.0	-2.6
Manufacturing.....	86.185	118.0	118.0	-0.8	0.3	0.0	-0.3	0.0
Canada	100.000	127.6	127.6	-4.2	0.4	-0.4	-0.9	0.0
Nonmanufacturing (Dec. 2020=100).....	7.307	127.8	124.7	-36.6	-2.0	1.3	-5.9	-2.4
Manufacturing (Dec. 2020=100).....	90.927	119.9	120.1	0.3	0.7	-0.7	-0.5	0.2
European Union	100.000	116.5	115.9	-7.8	0.2	1.1	-1.9	-0.5
Nonmanufacturing.....	14.920	131.4	128.0	-30.7	-0.2	4.8	-9.9	-2.6
Manufacturing.....	83.084	113.3	113.4	-1.4	0.3	0.4	-0.4	0.1
Germany	100.000	116.7	116.3	1.5	0.0	1.2	-0.2	-0.3
Latin America³	100.000	122.0	121.5	-20.2	-0.4	-0.6	-2.9	-0.4
Nonmanufacturing.....	8.898	133.9	128.5	-50.6	-1.9	-3.7	-7.8	-4.0
Manufacturing.....	90.458	121.4	121.3	-15.1	-0.2	-0.3	-2.3	-0.1
Mexico	100.000	122.8	122.3	-16.7	0.2	-0.2	-2.0	-0.4
Nonmanufacturing.....	7.656	115.4	110.8	-56.2	-0.3	-5.9	-6.6	-4.0
Manufacturing.....	91.702	124.4	124.3	-10.5	0.2	0.2	-1.6	-0.1
Pacific Rim⁴	100.000	113.8	112.7	-10.2	-0.8	0.3	-2.3	-1.0
Nonmanufacturing.....	21.100	120.9	116.1	-30.7	-2.6	1.5	-8.3	-4.0
Manufacturing.....	77.622	113.5	113.5	-1.2	-0.2	-0.1	-0.6	0.0
China	100.000	109.3	108.1	-14.1	-0.4	-0.4	-2.3	-1.1
Nonmanufacturing.....	27.975	112.1	108.7	-31.3	-1.8	1.4	-6.6	-3.0
Manufacturing.....	70.925	110.7	110.2	-3.3	0.1	-1.0	-0.4	-0.5
Japan	100.000	113.0	111.3	-14.3	-1.1	-0.7	-3.1	-1.5
Nonmanufacturing.....	24.536	124.3	118.5	-37.5	-1.7	-1.0	-11.8	-4.7
Manufacturing.....	74.096	109.8	109.5	-1.4	-0.5	-0.5	0.0	-0.3

¹ Relative importance figures are based on 2021 trade values.

² Western Europe, Canada, Japan, Australia, New Zealand, and South Africa.

³ Mexico, Central America, South America, and the Caribbean.

⁴ China, Japan, Australia, Brunei, Indonesia, Macao, Malaysia, New Zealand, Papua New Guinea, Philippines, and the Asian Newly Industrialized Countries.

NOTES: Data may be revised in each of the 3 months after original publication.

Regions are not mutually exclusive.

Dash = Not available

Table 9. U.S. terms of trade indexes and percent changes by locality: June 2022 to June 2023¹
 [December 2017=100, unless otherwise noted]

Description	Index		Percent change				
	May 2023	Jun. 2023	Annual	Monthly			
			Jun. 2022 to Jun. 2023	Feb. 2023 to Mar. 2023	Mar. 2023 to Apr. 2023	Apr. 2023 to May 2023	May 2023 to Jun. 2023
Industrialized Countries²	100.5	100.6	1.7	0.9	-0.9	-1.3	0.1
Canada	97.4	98.1	22.6	1.5	-1.3	0.1	0.7
European Union	100.6	100.3	-8.1	0.6	0.7	-2.2	-0.3
Germany	107.2	107.3	0.5	1.0	1.5	-0.7	0.1
Latin America³	107.9	107.4	-16.4	-0.4	-0.9	-2.2	-0.5
Mexico	111.2	110.6	-15.3	0.4	-0.9	-2.0	-0.5
Pacific Rim⁴	108.6	107.9	-7.9	-0.4	0.6	-2.2	-0.6
China	106.9	106.2	-12.1	0.0	0.1	-2.0	-0.7
Japan	107.1	105.3	-14.9	-0.7	-1.0	-2.9	-1.7

¹ Terms of trade indexes are derived by dividing the export price index by the corresponding import price index and multiplying by 100.

² Western Europe, Canada, Japan, Australia, New Zealand, and South Africa.

³ Mexico, Central America, South America, and the Caribbean.

⁴ China, Japan, Australia, Brunei, Indonesia, Macao, Malaysia, New Zealand, Papua New Guinea, Philippines, and the Asian Newly Industrialized Countries.

NOTES: Data may be revised in each of the 3 months after original publication.

Regions are not mutually exclusive.

Dash = Not available

Table 10. U.S. international price indexes and percent changes for selected transportation services: June 2022 to June 2023

[2000=100, unless otherwise noted]

Description	Relative importance May 2023 ¹	Index		Percent change					
		May 2023	Jun. 2023	Annual Jun. 2022 to Jun. 2023	Monthly				
					Feb. 2023 to Mar. 2023	Mar. 2023 to Apr. 2023	Apr. 2023 to May 2023	May 2023 to Jun. 2023	
Air Freight									
Import Air Freight	100.000	229.9	239.0	-33.8	-2.8	2.8	-4.0	4.0	
Europe (Dec. 2003=100).....	29.643	224.1	226.7	-26.6	-5.0	-14.6	1.9	1.2	
Asia.....	69.872	214.9	225.0	-36.8	-2.0	12.0	-5.6	4.7	
Export Air Freight	100.000	180.0	171.8	-19.0	-6.8	-1.2	-3.8	-4.6	
Europe (Dec. 2006=100).....	24.731	138.0	137.5	-19.9	-1.5	-2.8	-4.8	-0.4	
Asia (Dec. 2011=100).....	52.662	140.6	131.3	-21.9	-8.7	-1.0	-4.3	-6.6	
Inbound Air Freight	100.000	164.9	168.2	-36.0	-4.8	-1.0	-3.0	2.0	
Europe (Dec. 2003=100).....	30.555	161.9	163.6	-19.0	-2.7	-10.8	1.5	1.1	
Asia.....	58.274	147.2	148.8	-45.2	-7.1	4.5	-3.3	1.1	
Outbound Air Freight	100.000	175.0	176.8	-22.4	-7.6	-6.0	-4.9	1.0	
Europe (Dec. 2003=100).....	28.913	169.2	168.9	-16.7	-3.9	-7.7	-3.1	-0.2	
Asia.....	53.775	188.8	193.2	-25.8	-10.5	-5.7	-7.1	2.3	
Air Passenger Fares									
Import Air Passenger Fares	100.000	184.4	202.9	6.2	1.9	-5.4	8.0	10.0	
Europe.....	47.508	216.7	241.9	13.0	1.6	-2.3	14.5	11.6	
Asia.....	5.887	185.0	199.0	-8.0	-1.5	3.6	6.3	7.6	
Latin America/Caribbean.....	14.926	151.4	161.0	2.9	5.7	-5.7	-9.5	6.3	
Export Air Passenger Fares	100.000	181.2	198.0	4.2	6.4	0.6	-5.5	9.3	
Europe.....	21.091	223.1	262.9	15.1	2.1	-1.9	5.8	17.8	
Asia.....	12.173	201.4	214.8	5.9	-8.7	8.1	3.7	6.7	
Latin America/Caribbean.....	53.167	179.7	193.4	2.8	12.4	1.6	-13.0	7.6	

¹ Relative importance figures are based on 2021 trade values.

NOTES: Data may be revised in each of the 3 months after original publication.

Dash = Not available

TECHNICAL NOTE

Import and Export Goods and Services Price Indexes - All indexes use a modified Laspeyres formula and are not seasonally adjusted. Price indexes are reweighted annually, with a 2-year lag in the weights. Published series use a base year of 2000=100 where possible. More detailed index series and additional information may be obtained at www.bls.gov/mxp or by calling (202) 691-7101.

Merchandise Goods Classification Systems - The merchandise price indexes are published using three classification systems. Items are classified by end use according to the Bureau of Economic Analysis Classification System, by industry according to the North American Industry Classification System (NAICS), and by product category according to the Harmonized System (HS). While classification by end use and product category are self-explanatory, some notes are in order for classifying items by industry. In the NAICS imports and exports tables, items are classified by output industry, not input industry. As an example, NAICS import index 326 (plastics and rubber products manufacturing) includes outputs such as manufactured plastic rather than inputs such as petroleum. The NAICS classification structure also matches the classification system used by the Producer Price Index (PPI) to produce the NAICS primary products indexes.

Import Price Goods Indexes - Items are classified by the Harmonized Tariff Schedule of the United States Annotated (TSUSA). Import prices are based on U.S. dollar prices paid by the U.S. importer. The prices are generally either "free on board" (f.o.b.) foreign port or "cost, insurance, and freight" (c.i.f.) U.S. port transaction prices, depending on the practices of the individual industry. The index for crude petroleum is calculated from data collected by the U.S. Department of Energy.

Export Price Goods Indexes - Items are classified by the Harmonized Schedule B classification system of the U.S. Bureau of the Census. The prices used are generally either "free alongside ship" (f.a.s.) factory or "free on board" (f.o.b.) transaction prices, depending on the practices of the individual industry. Prices used in the grain index, excluding rice, are obtained from the U.S. Department of Agriculture.

Services Price Indexes - Indexes for import and export air passenger fares calculate changes in the average revenue received per passenger by foreign carriers from U.S. residents and by U.S. carriers from foreign residents, respectively. Data are obtained from an airline consulting service and report on tickets sold by travel agencies, travel websites, and directly by the airlines. Taxes and fees are included in both the import and export air passenger fares indexes. Import air passenger fares data have used the airline consulting service source since September 2008. Before April 2018, the export air passenger fares data were collected directly by BLS from U.S. airlines. The air freight indexes are calculated from data collected directly from airlines. These data exclude mail and passenger baggage. The scope of the service being priced is the movement of freight from airport to airport only, and does not include any ground transportation or port service. The air freight indexes are presented using two definitions: balance of payments (which represents transactions between U.S. and foreign residents) and international (which represents transactions inbound to and outbound from the United States.) Fact sheets specifying detailed information for each services industry are available at www.bls.gov/mxp under "MXP Publications."

Import Price Indexes by Locality of Origin - Prices used in these indexes are a subset of the data collected for the import price indexes. The indexes are specific to a country, region, or grouping and, beginning with January 2002, are based on the North American Industry Classification System (NAICS) covering goods-producing industries. Nonmanufactured goods are defined as NAICS 11 and 21, and manufactured goods are defined as NAICS 31-33.

Export Price Indexes by Locality of Destination - Prices used in these indexes are a subset of the data collected for the export price indexes. The indexes are specific to a country, region, or grouping and are based on the North American Industry Classification System (NAICS) covering goods-producing industries. Nonmanufactured goods are defined as NAICS 11 and 21, and manufactured goods are defined as NAICS 31-33.

Terms of Trade Indexes - Terms of trade indexes measure the relative price of exports in terms of import prices for a specific country, region, or grouping. The indexes are calculated as one country, region, or grouping's all-export goods price index divided by the corresponding all-import goods price index on a scale of 100.

Relative Importance - A relative importance is a specific index's price-updated value share (expressed as a percentage) of overall imports or exports at a specific point in time. Relative importance values are affected by the trade weights at the point indexes are reweighted and index changes relative to other indexes since the reweight point. If an index is rising in value relative to other indexes over time, the relative importance will increase as well.

Revision Policy - To reflect the availability of late reports and corrections by respondents, monthly data may be revised in each of the 3 months after original publication. After 3 months, no further data revisions take place. For example, data first published in the January release will be subject to revision in the releases for February, March, and April.

Rounding Policy - Index values are rounded to the tenth decimal place after being calculated. All percent changes are then derived from the rounded index values and subsequently rounded to the tenth decimal place.

Uses of the Data - The primary use of the indexes is to deflate trade statistics, notably the foreign trade sector of the National Income and Product Accounts (NIPA) constructed by the Department of Commerce. Other published indexes are useful for general market analysis. For trade in international services, balance of payments indexes are used for deflating NIPA, while international indexes are more appropriate for market analysis.

Email Subscription - The U.S. import and export price indexes news release is available through an email subscription service at <https://subscriptions.bls.gov/accounts/USDOLBLS/subscriber/new>.

Additional Information - More detailed data are available on the Import/Export Price Indexes home page at www.bls.gov/mxp. For import and export price indexes data requests, send an email to mxpinfo@bls.gov.

If you are deaf, hard of hearing, or have a speech disability, please dial 7-1-1 to access telecommunications relay services.