

Transmission of material in this release is embargoed until
8:30 a.m. (EST) Thursday, March 6, 2014

USDL 14-0353

Technical information: (202) 691-5606 • dprweb@bls.gov • www.bls.gov/lpc
Media contact (202) 691-5902 • PressOffice@bls.gov

PRODUCTIVITY AND COSTS

Fourth Quarter and Annual Averages 2013, Revised

Nonfarm business sector labor productivity increased at a 1.8 percent annual rate during the fourth quarter of 2013, the U.S. Bureau of Labor Statistics reported today. The increase in productivity reflects increases of 3.4 percent in output and 1.6 percent in hours worked. (All quarterly percent changes in this release are seasonally adjusted annual rates.) From the fourth quarter of 2012 to the fourth quarter of 2013, productivity increased 1.3 percent as output and hours worked rose 2.9 percent and 1.7 percent, respectively. (See chart 1 and table A.) Annual average productivity increased 0.5 percent from 2012 to 2013. (See table C.)

Labor productivity, or output per hour, is calculated by dividing an index of real output by an index of hours worked of all persons, including employees, proprietors, and unpaid family workers. The measures released today are based on more recent source data than were available for the preliminary report.

Chart 1. Output per hour, nonfarm business, all persons, 2009Q1 – 2013Q4

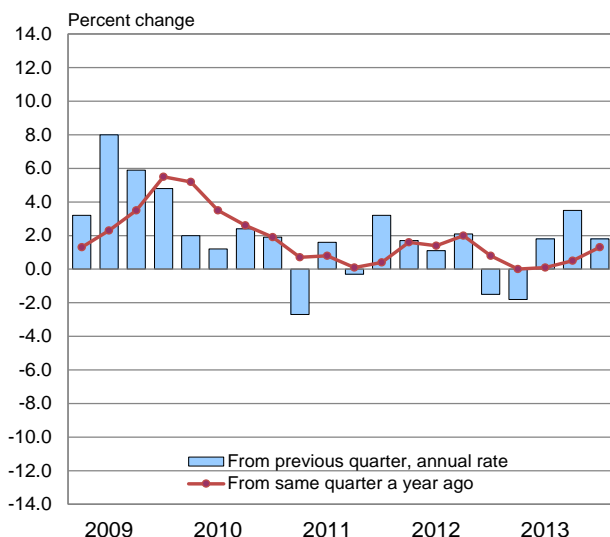
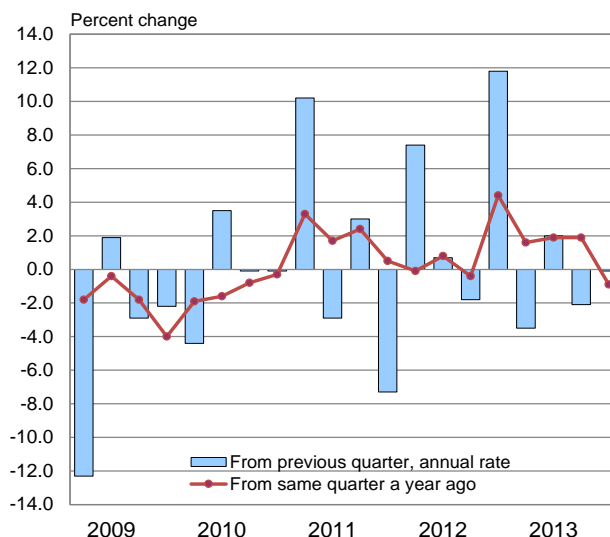


Chart 2. Unit labor costs, nonfarm business, all persons, 2009Q1 – 2013Q4



Unit labor costs in nonfarm businesses decreased 0.1 percent in the fourth quarter of 2013, while hourly compensation increased 1.7 percent. Unit labor costs fell 0.9 percent over the last four quarters. (See chart 2 and table A.)

BLS defines unit labor costs as the ratio of hourly compensation to labor productivity; increases in hourly compensation tend to increase unit labor costs and increases in output per hour tend to reduce them.

Data in this release reflect the annual benchmark revision of BLS Current Employment Statistics program data on nonfarm employment and hours, and the revised seasonal adjustment of those data. More detail can be found in tables 1 through 6 and appendix tables 1 through 6. See Revised measures on page 2.

Manufacturing sector productivity increased 1.3 percent in the fourth quarter of 2013, as output increased 5.0 percent and hours worked increased 3.6 percent. Productivity increased 3.0 percent in the durable goods sector and decreased 0.1 percent in the nondurable goods sector. Over the last four quarters, manufacturing productivity increased 1.9 percent, as output increased 3.0 percent and hours increased 1.1 percent. **Unit labor costs in manufacturing** decreased 0.1 percent in the fourth quarter of 2013 and declined 1.0 percent from the same quarter a year ago. (See charts 3, 4 and tables A and 3.)

Chart 3. Output per hour, manufacturing, all persons, 2009Q1 – 2013Q4

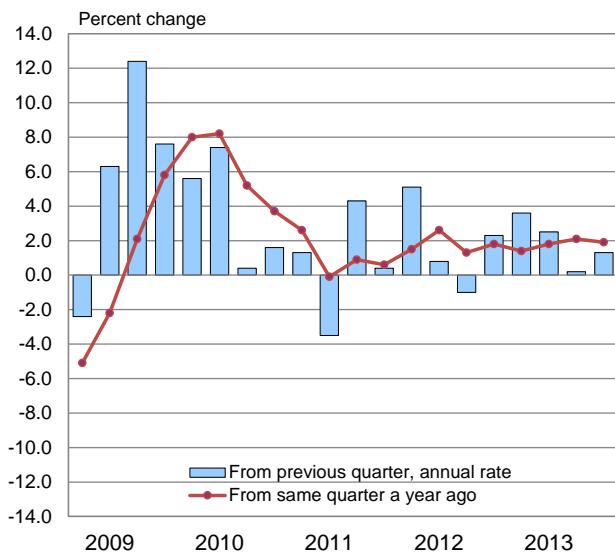
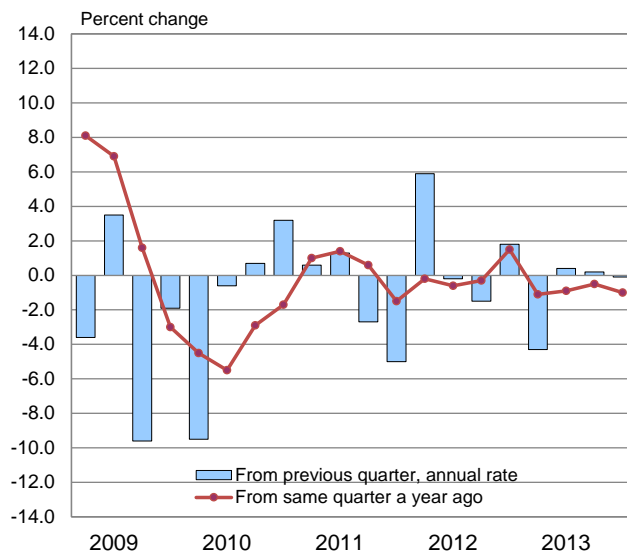


Chart 4. Unit labor costs, manufacturing, all persons, 2009Q1 – 2013Q4



The concepts, sources, and methods used for the manufacturing output series differ from those used in the business and nonfarm business output series; these output measures are not directly comparable. See Technical Notes for a more detailed explanation. (See page 6.)

Revised measures

Quarterly and annual measures of hours and related series—including productivity— were revised back to 1979 for the business, nonfarm business, and nonfinancial corporate sectors and back to 1990 for the manufacturing sector. The revisions incorporate revised Current Employment Statistics (CES) program data published February 7, 2014. From 2009 forward the data were subject to revision as a result of annual benchmarking of CES data and revised seasonal adjustment of those data. Prior to 2009 there were small revisions due to the reclassification of some industries. Index measures related to hours show full historical revisions because the 2009 base year values were revised; resulting revisions to percent changes are small. Third quarter, fourth quarter, and annual average data for 2013 were also revised for regular updates of source data on output and compensation.

Revised and previous measures for the third and fourth quarters of 2013 are shown in table B for the business, nonfarm business, and manufacturing sectors. Revised annual average measures for 2009 to 2013 are shown in table C for the nonfarm business and manufacturing sectors. Revised third quarter measures for the nonfinancial corporate sector are shown in table D. Quarterly and annual data for all sectors appear in tables 1-6 for 2011 through 2013 and in appendix tables 1-6 for 2008 through 2010. Full historical annual and quarterly measures can be found on the labor productivity and costs home page at <http://www.bls.gov/lpc/#data>.

In the **fourth quarter of 2013**, nonfarm business productivity increased 1.8 percent rather than 3.2 percent as reported February 6. The revised figure reflects a 1.5 percentage point downward revision to output and a 0.1 percentage point downward revision to hours. Unit labor costs decreased 0.1 percent, a smaller decline than was previously reported. Manufacturing productivity growth was revised downward, to 1.3 percent, reflecting a downward revision to output that was larger than a downward revision to hours. Due to both the downward revision to productivity and an upward revision to hourly compensation, manufacturing unit labor costs decreased 0.1 percent, rather than falling 1.0 percent as reported in the preliminary release. (See table B.)

In the **third quarter of 2013**, nonfarm business productivity growth was little changed, at 3.5 percent, reflecting a slight upward revision to hours. Unit labor costs decreased 2.1 percent, as revised. In the manufacturing sector, productivity increased 0.2 percent rather than falling 0.1 percent as previously reported. The combination of the upward revision to productivity and a downward revision to compensation per hour resulted in a smaller increase in manufacturing unit labor costs than previously reported. (See table B.) **Nonfinancial corporate sector productivity** decreased 0.7 percent in the third quarter of 2013. (See table D.)

When the **annual average** indexes of output per hour are compared, nonfarm business sector productivity rose 0.5 percent from 2012 to 2013. Since 2010, productivity has increased at an average annual rate of 0.8 percent, reflecting average annual growth rates of 2.8 percent in output and 2.0 percent in hours worked. In contrast, output per hour had increased 3.3 percent in 2010 as output increased 3.2 percent and hours declined 0.1 percent. In 2009, marked by the trough of the most recent recession, productivity grew 3.1 percent as output fell 4.3 percent and hours fell faster, 7.2 percent. Unit labor costs rose 1.1 percent from 2012 to 2013, similar to the 1.2 percent increase in the previous year.

In the manufacturing sector, annual average productivity growth was revised down to 1.8 percent in 2013, the same rate as in 2012. Productivity growth over the last three years of 1.5 percent per year on average reflected annual average rates of growth in output and hours of 3.2 percent and 1.7 percent, respectively. Manufacturing unit labor costs fell 0.9 percent in 2013 as the 1.8 percent increase in productivity was greater than the 0.9 percent increase in compensation per hour. The gain in hourly compensation was the smallest in the annual series which extends back to 1988. (See table C.)

The preliminary Productivity and Costs news release for first-quarter 2014 is scheduled to be released on Wednesday, May 7, 2014 at 8:30 a.m. (EDT).

Table A. Revised fourth-quarter 2013 measures: percent change from previous quarter at annual rate (Q to Q) and from same quarter a year ago (Y to Y)

Sector	Nonfarm Business		Business		Manufacturing		Durable Manufacturing		Nondurable Manufacturing	
	Q to Q	Y to Y	Q to Q	Y to Y	Q to Q	Y to Y	Q to Q	Y to Y	Q to Q	Y to Y
Productivity	1.8	1.3	1.5	1.7	1.3	1.9	3.0	2.9	-0.1	1.1
Output	3.4	2.9	3.2	3.4	5.0	3.0	7.5	4.6	2.4	1.2
Hours	1.6	1.7	1.7	1.6	3.6	1.1	4.4	1.6	2.4	0.1
Hourly compensation	1.7	0.3	1.5	0.4	1.2	0.9	1.7	0.9	0.2	0.9
Real hourly compensation	0.8	-0.9	0.6	-0.9	0.4	-0.3	0.8	-0.3	-0.6	-0.3
Unit labor costs	-0.1	-0.9	-0.1	-1.4	-0.1	-1.0	-1.3	-2.0	0.3	-0.2

Table B. Revised and previous measures: fourth quarter and third quarter 2013

Sector	Nonfarm Business		Business		Manufacturing		Durable Manufacturing		Nondurable Manufacturing	
	Revised	Previous	Revised	Previous	Revised	Previous	Revised	Previous	Revised	Previous
Percent change, annual rate, fourth quarter 2013										
Productivity	1.8	3.2	1.5	2.6	1.3	2.0	3.0	3.4	-0.1	1.0
Output	3.4	4.9	3.2	4.4	5.0	6.6	7.5	8.8	2.4	4.1
Hours	1.6	1.7	1.7	1.7	3.6	4.4	4.4	5.2	2.4	3.1
Hourly compensation	1.7	1.5	1.5	1.3	1.2	1.0	1.7	0.7	0.2	1.7
Real hourly compensation	0.8	0.6	0.6	0.4	0.4	0.2	0.8	-0.2	-0.6	0.8
Unit labor costs	-0.1	-1.6	-0.1	-1.3	-0.1	-1.0	-1.3	-2.7	0.3	0.7
Percent change, annual rate, third quarter 2013										
Productivity	3.5	3.6	3.2	3.4	0.2	-0.1	1.6	1.0	-1.0	-0.8
Output	5.4	5.4	5.6	5.6	1.4	1.3	3.2	3.2	-0.6	-0.8
Hours	1.9	1.7	2.3	2.2	1.1	1.3	1.6	2.1	0.4	0.0
Hourly compensation	1.3	1.6	0.9	1.2	0.5	1.2	0.9	0.1	-0.5	3.2
Real hourly compensation	-1.2	-1.0	-1.7	-1.4	-2.1	-1.4	-1.6	-2.5	-3.0	0.5
Unit labor costs	-2.1	-2.0	-2.2	-2.1	0.2	1.2	-0.7	-0.9	0.6	4.0

Table C. Revised annual average changes in productivity and related measures: 2009-2013

Sector	Nonfarm Business					Manufacturing				
	2009	2010	2011	2012	2013	2009	2010	2011	2012	2013
Productivity	3.1	3.3	0.5	1.5	0.5	0.0	6.3	1.0	1.8	1.8
Output	-4.3	3.2	2.5	3.7	2.2	-12.9	6.3	3.1	4.1	2.5
Hours	-7.2	-0.1	2.0	2.2	1.7	-12.9	0.0	2.1	2.3	0.7
Hourly compensation	1.1	2.1	2.5	2.6	1.6	3.4	2.4	1.3	1.9	0.9
Real hourly compensation	1.5	0.4	-0.7	0.5	0.1	3.8	0.7	-1.8	-0.2	-0.5
Unit labor costs	-2.0	-1.2	2.0	1.2	1.1	3.4	-3.7	0.4	0.1	-0.9

Table D. Nonfinancial corporations: revised third-quarter 2013 productivity and cost measures

	Productivity	Output	Hours	Hourly compensation	Real hourly compensation	Unit labor costs	Unit profits	Implicit price deflator
	Percent change, annual rate, third quarter 2013							
Revised	-0.7	1.7	2.4	0.9	-1.7	1.6	2.4	2.1
Previous	-0.5	1.7	2.2	1.1	-1.5	1.6	2.4	2.1

TECHNICAL NOTES

Labor Hours: Hours data for the labor productivity and cost measures include hours for all persons working in the sector—wage and salary workers, the self-employed and unpaid family workers. The primary source of hours and employment data is the BLS Current Employment Statistics (CES) program, which provides monthly survey data on the number of jobs held by wage and salary workers in nonfarm establishments. The CES also provides average weekly paid hours of production and nonsupervisory workers in these establishments. Weekly paid hours are adjusted to hours at work using data from the National Compensation Survey (NCS). The BLS Hours at Work survey, conducted for this purpose, was used for earlier years. The Office of Productivity and Technology estimates average weekly hours at work for nonproduction and supervisory workers using information from the Current Population Survey (CPS), the CES, and the NCS.

Data from the CPS are used for farm labor, nonfarm proprietors, and nonfarm unpaid family workers. Estimates of labor input for government enterprises are derived from the CPS, the CES, and the National Income and Product Accounts (NIPA) prepared by the Bureau of Economic Analysis (BEA) of the Department of Commerce.

The CES measures jobs, counting a person who is employed by two or more establishments at each place of employment. In contrast, the CPS features measures of employment that count each person only once and classify each person according to his or her primary job; hours worked at all jobs by that person accrue to his or her primary job. However, the CPS also collects more detailed information on employment and hours worked at primary jobs and all other jobs, separately. The BLS productivity measures use the more detailed information on employment and hours to assign all hours worked to the correct industrial sector and avoid duplicating hours data from the CES.

Output: Business sector output is a chain-type, current-weighted index constructed after excluding from gross domestic product (GDP) the following outputs: general government, nonprofit institutions, and private households (including owner-occupied housing). Corresponding exclusions also are made in labor inputs. Business output accounted for about 75 percent of the value of GDP in 2012. Nonfarm business, which excludes farming, accounted for about 74 percent of GDP in 2012.

Annual indexes for manufacturing and its durable and nondurable goods components are constructed by deflating current-dollar industry value of production data from the U.S. Bureau of the Census with deflators from the BLS. These deflators are based on data from the BLS producer price program and other sources. The industry shipments are aggregated using annual weights, and intrasector transactions are removed. Quarterly manufacturing output measures are based on the index of industrial production prepared monthly by the Board of Governors of the Federal Reserve System, adjusted to be consistent with annual indexes of manufacturing sector output prepared by BLS. Durables include the following 3-digit NAICS industries: wood product manufacturing; nonmetallic mineral product manufacturing; primary metal manufacturing; fabricated metal product manufacturing; machinery manufacturing; computer and electronic product manufacturing; electrical equipment and appliance manufacturing; transportation equipment manufacturing; furniture and related product manufacturing; and miscellaneous manufacturing. Nondurables include: food manufacturing; beverage and tobacco product manufacturing; textile mills; textile product mills; apparel manufacturing; leather and allied product manufacturing; paper manufacturing; printing and related support activities; petroleum and coal products manufacturing; chemical manufacturing; and plastics and rubber products manufacturing.

Nonfinancial corporate output is a chain-type, current-weighted index calculated on the basis of the costs incurred and the incomes earned from production. The output measure excludes the following outputs from GDP: general government; nonprofit institutions; private households; unincorporated business; and those corporations classified as offices of bank holding companies, offices of other holding companies, or offices in the finance and insurance sector. Nonfinancial corporations accounted for about 49 percent of the value of GDP in 2012.

Productivity: These productivity measures describe the relationship between real output and the labor time involved in its production. They show the changes from period to period in the amount of goods and services produced per hour. Although these measures relate output to hours at work of all persons engaged in a sector, they do not measure the specific contribution of labor, capital, or any other factor of production. Rather, they reflect the joint effects of many influences, including changes in technology;

capital investment; level of output; utilization of capacity, energy, and materials; the organization of production; managerial skill; and the characteristics and effort of the work force.

Labor Compensation: The measure includes accrued wages and salaries, supplements, employer contributions to employee benefit plans, and taxes. Estimates of labor compensation by major sector, required for measures of hourly compensation and unit labor costs, are based primarily on employee compensation data from the NIPA, prepared by the BEA. The compensation of employees in general government, nonprofit institutions and private households are subtracted from compensation of domestic employees to derive employee compensation for the business sector. The labor compensation of proprietors cannot be explicitly identified and must be estimated. This is done by assuming that proprietors have the same hourly compensation as employees in the same sector. The quarterly labor productivity and cost measures do not contain estimates of compensation for unpaid family workers.

Unit Labor Costs: The measures of unit labor costs in this release describe the relationship between compensation per hour and productivity, or real output per hour, and can be used as an indicator of inflationary pressure on producers. Increases in hourly compensation increase unit labor costs; labor productivity increases offset compensation increases and lower unit labor costs.

Presentation of the data: The quarterly data in this release are presented in three ways: as percent changes from the previous quarter presented at a compound annual rate, as percent changes from the corresponding quarter of the previous year, and as index number series where 2009=100. Annual data are presented both as index number series and percent changes from the previous year.

The index numbers and rates of change reported in the productivity and costs news release are rounded to one decimal place. All percent changes in this release and on the BLS web site are calculated using index numbers to three decimal places. These index numbers are available at the BLS web site, www.bls.gov/data/home.htm, or by contacting the BLS Division of Major Sector Productivity. (Telephone 202-691-5606 or email DPRWEB@BLS.GOV)

Information in this release will be made available to sensory-impaired individuals upon request. Voice phone: 202-691-5606; Federal Relay Service number: 1-800-877-8339.

Table 1. Business sector: Productivity, hourly compensation, unit labor costs, and prices, seasonally adjusted

Year and quarter	Output per hour of all persons	Output	Hours of all persons	Compensation per hour (1)	Real compensation per hour (2)	Unit labor costs	Unit nonlabor payments (3)	Implicit price deflator (4)
Percent change from previous quarter at annual rate(5)								
2013 ANNUAL	0.9 r	2.5	1.5	1.8	0.3	0.8	2.3 r	1.5
2013 IV	1.5 r	3.2 r	1.7	1.5 r	0.6 r	-0.1 r	2.3 r	1.0 r
III	3.2 r	5.6	2.3 r	0.9 r	-1.7 r	-2.2 r	7.8 r	2.1
II	1.9 r	3.4	1.4 r	3.9	3.9 r	1.9	-1.7	0.3
I	0.3 r	1.4	1.1 r	-4.7 r	-6.1 r	-4.9	11.4	1.8
2012 ANNUAL	1.4	3.6	2.2	2.6	0.5	1.2	2.6	1.8
2012 IV	-1.6 r	0.2	1.9 r	10.4 r	8.0 r	12.3 r	-11.5	1.2
III	1.7 r	3.6	1.8 r	0.4 r	-1.6 r	-1.3	7.5 r	2.5
II	1.2 r	1.6	0.4 r	1.8 r	0.8 r	0.6	3.9	2.0
I	1.5 r	4.9	3.3 r	9.0 r	6.5 r	7.4	-5.4	1.6
2011 ANNUAL	0.4	2.4	2.0	2.4	-0.7	2.0	2.3	2.1
2011 IV	3.6 r	6.4	2.6 r	-4.2 r	-5.6 r	-7.6	12.4	0.7
III	-0.4 r	1.8	2.2 r	2.4 r	-0.6 r	2.7 r	3.1 r	2.9
II	1.3 r	4.1	2.7 r	-1.0 r	-5.4 r	-2.3	9.9 r	2.7
I	-2.8 r	-1.9	1.0 r	6.9 r	2.4 r	10.0	-8.5 r	1.6
Percent change from corresponding quarter of previous year								
2013 ANNUAL	0.9 r	2.5	1.5	1.8	0.3	0.8	2.3 r	1.5
2013 IV	1.7 r	3.4 r	1.6	0.4	-0.9 r	-1.4 r	4.8 r	1.3 r
III	0.9	2.6	1.7	2.5	0.9	1.6	1.1	1.4
II	0.6	2.1	1.5	2.4	0.9 r	1.8	1.0	1.5
I	0.4 r	1.7	1.3 r	1.8 r	0.1 r	1.5	2.4	1.9
2012 ANNUAL	1.4	3.6	2.2	2.6	0.5	1.2	2.6	1.8
2012 IV	0.7	2.6	1.9 r	5.3	3.4	4.6	-1.7	1.8
III	2.0	4.1	2.1 r	1.6	-0.1	-0.4	4.4	1.7
II	1.5 r	3.6	2.1 r	2.1	0.2	0.6	3.3	1.8
I	1.5	4.3	2.7	1.4	-1.4	-0.1	4.7	2.0
2011 ANNUAL	0.4	2.4	2.0	2.4	-0.7	2.0	2.3	2.1
2011 IV	0.4	2.5	2.1 r	0.9 r	-2.3 r	0.5	3.9	2.0
III	-0.1	1.9	2.0 r	2.4 r	-1.3 r	2.5	2.3	2.4
II	0.6	2.5	1.8 r	2.5	-0.8 r	1.8	2.6	2.2
I	0.6	2.7	2.1	3.9 r	1.7	3.2	0.1	1.9
Indexes 2009=100								
2013 ANNUAL	106.1 r	112.1 r	105.7 r	109.1 r	100.4 r	102.8 r	112.1 r	106.7 r
2013 IV	106.9 r	113.8 r	106.4 r	109.7 r	100.5 r	102.6 r	113.5 r	107.2 r
III	106.5 r	112.9	106.0 r	109.3 r	100.4 r	102.7 r	112.9 r	106.9
II	105.7 r	111.4	105.4 r	109.1 r	100.8 r	103.2 r	110.8 r	106.4
I	105.2 r	110.5	105.0 r	108.1 r	99.8 r	102.7 r	111.3	106.3
2012 ANNUAL	105.1 r	109.5	104.1 r	107.2 r	100.1 r	102.0 r	109.6 r	105.1
2012 IV	105.1 r	110.1	104.7 r	109.4 r	101.4 r	104.0 r	108.3 r	105.8
III	105.5 r	110.0	104.3 r	106.7 r	99.5 r	101.1 r	111.7 r	105.5
II	105.1 r	109.1	103.8 r	106.6 r	99.9 r	101.4 r	109.7 r	104.9
I	104.8 r	108.6	103.7 r	106.1 r	99.7 r	101.3 r	108.6 r	104.4
2011 ANNUAL	103.7 r	105.6	101.9 r	104.5 r	99.6 r	100.8 r	106.8 r	103.3
2011 IV	104.4 r	107.3	102.8 r	103.8 r	98.1 r	99.5 r	110.2 r	103.9
III	103.5 r	105.7	102.2 r	105.0 r	99.5 r	101.5 r	107.0 r	103.8
II	103.6 r	105.2	101.6 r	104.4 r	99.7 r	100.8 r	106.2 r	103.0
I	103.2 r	104.2	100.9 r	104.6 r	101.1 r	101.4 r	103.7 r	102.4

See footnotes following Table 6.
r=revised

March 6, 2014
Source: Bureau of Labor Statistics

Table 2. Nonfarm business sector: Productivity, hourly compensation, unit labor costs, and prices, seasonally adjusted

Year and quarter	Output per hour of all persons	Output	Hours of all persons	Compensation per hour (1)	Real compensation per hour (2)	Unit labor costs	Unit nonlabor payments (3)	Implicit price deflator (4)
Percent change from previous quarter at annual rate(5)								
2013 ANNUAL	0.5 r	2.2 r	1.7 r	1.6	0.1 r	1.1 r	1.5 r	1.3
2013 IV	1.8 r	3.4 r	1.6 r	1.7 r	0.8 r	-0.1 r	3.5 r	1.4 r
III	3.5 r	5.4	1.9 r	1.3 r	-1.2 r	-2.1 r	8.5 r	2.4
II	1.8	3.3	1.5 r	3.8	3.8 r	2.0	-0.7	0.8
I	-1.8 r	-0.3	1.6 r	-5.3 r	-6.7 r	-3.5	6.8	0.7
2012 ANNUAL	1.5	3.7	2.2	2.6	0.5	1.2	2.7	1.8
2012 IV	-1.5 r	0.7	2.2 r	10.2 r	7.8 r	11.8	-12.1	0.8
III	2.1 r	4.2	2.0 r	0.3 r	-1.7 r	-1.8	7.7	2.2
II	1.1 r	1.6	0.5 r	1.8 r	0.8 r	0.7	4.0	2.1
I	1.7 r	5.0	3.2 r	9.2 r	6.7 r	7.4	-5.6 r	1.5
2011 ANNUAL	0.5	2.5	2.0	2.5	-0.7	2.0	1.4	1.7
2011 IV	3.2 r	5.9	2.6 r	-4.3 r	-5.6 r	-7.3	13.2 r	1.1
III	-0.3 r	1.7	2.0 r	2.7 r	-0.2 r	3.0	2.3	2.7
II	1.6 r	4.7	3.1 r	-1.4 r	-5.7 r	-2.9	10.1	2.4
I	-2.7 r	-2.1	0.7 r	7.2 r	2.7 r	10.2	-10.4 r	0.9
Percent change from corresponding quarter of previous year								
2013 ANNUAL	0.5 r	2.2 r	1.7 r	1.6	0.1 r	1.1 r	1.5 r	1.3
2013 IV	1.3 r	2.9 r	1.7 r	0.3 r	-0.9	-0.9 r	4.4 r	1.3
III	0.5	2.3	1.8	2.4	0.8	1.9	0.3	1.2
II	0.1 r	1.9	1.8 r	2.1 r	0.6 r	1.9 r	0.1	1.2
I	0.0	1.5	1.6 r	1.6 r	-0.1 r	1.6	1.3	1.5
2012 ANNUAL	1.5	3.7	2.2	2.6	0.5	1.2	2.7	1.8
2012 IV	0.8 r	2.8	2.0 r	5.3	3.3	4.4	-1.8	1.7
III	2.0	4.1	2.1	1.6	-0.1 r	-0.4	4.6	1.7
II	1.4	3.5	2.1	2.2	0.3	0.8	3.3	1.9
I	1.6	4.3	2.7	1.4 r	-1.3	-0.1	4.8	1.9
2011 ANNUAL	0.5	2.5	2.0	2.5	-0.7	2.0	1.4	1.7
2011 IV	0.4	2.5	2.1	1.0 r	-2.3 r	0.5	3.4	1.8
III	0.1 r	2.1	2.0 r	2.5 r	-1.2 r	2.4	1.4	2.0
II	0.8 r	2.7	1.9	2.4	-0.9	1.7	1.7	1.7
I	0.7 r	2.7	2.0 r	4.0	1.8	3.3	-0.9	1.5
Indexes 2009=100								
2013 ANNUAL	105.8 r	112.0 r	105.9 r	109.1 r	100.4 r	103.1 r	109.9 r	105.9 r
2013 IV	106.7 r	113.7 r	106.6 r	109.8 r	100.6 r	102.9 r	111.7 r	106.6 r
III	106.2 r	112.8	106.1 r	109.4 r	100.4 r	103.0 r	110.8 r	106.2
II	105.3 r	111.3	105.6 r	109.0 r	100.7 r	103.5 r	108.5 r	105.6
I	104.9 r	110.4	105.3 r	108.0 r	99.8 r	103.0 r	108.7	105.4
2012 ANNUAL	105.3 r	109.7	104.1 r	107.4 r	100.3 r	102.0 r	108.3 r	104.6
2012 IV	105.4 r	110.5	104.8 r	109.5 r	101.5 r	103.9 r	106.9 r	105.2
III	105.8 r	110.3	104.3 r	106.9 r	99.7 r	101.1 r	110.4 r	105.0
II	105.2 r	109.2	103.8 r	106.8 r	100.1 r	101.5 r	108.4 r	104.4
I	104.9 r	108.7	103.6 r	106.3 r	99.9 r	101.3 r	107.3 r	103.8
2011 ANNUAL	103.8 r	105.7	101.9 r	104.6 r	99.8 r	100.8 r	105.5 r	102.7
2011 IV	104.5 r	107.4	102.8 r	104.0 r	98.3 r	99.6 r	108.9 r	103.4
III	103.6 r	105.9	102.2 r	105.2 r	99.7 r	101.5 r	105.5 r	103.2
II	103.7 r	105.4	101.7 r	104.5 r	99.8 r	100.7 r	104.9 r	102.5
I	103.3 r	104.2	100.9 r	104.8 r	101.3 r	101.5 r	102.4 r	101.9

See footnotes following Table 6.
r=revised

March 6, 2014
Source: Bureau of Labor Statistics

Table 3. Manufacturing sector: Productivity, hourly compensation, and unit labor costs, seasonally adjusted

Year and quarter	Output per hour of all persons	Output	Hours of all persons	Compensation per hour (1)	Real compensation per hour (2)	Unit labor costs
Percent change from previous quarter at annual rate(5)						
2013 ANNUAL	1.8 r	2.5 r	0.7 r	0.9 r	-0.5 r	-0.9 r
2013 IV	1.3 r	5.0 r	3.6 r	1.2 r	0.4 r	-0.1 r
III	0.2 r	1.4 r	1.1 r	0.5 r	-2.1 r	0.2 r
II	2.5 r	0.2	-2.2 r	2.9 r	2.9 r	0.4
I	3.6 r	5.4	1.7 r	-0.8 r	-2.3 r	-4.3
2012 ANNUAL	1.8	4.1	2.3	1.9	-0.2	0.1
2012 IV	2.3	2.7	0.4	4.1	1.8 r	1.8
III	-1.0 r	0.1	1.1 r	-2.5 r	-4.4 r	-1.5
II	0.8 r	2.1	1.3 r	0.6 r	-0.4 r	-0.2
I	5.1 r	8.4	3.1 r	11.3 r	8.7 r	5.9
2011 ANNUAL	1.0	3.1	2.1	1.3	-1.8	0.4
2011 IV	0.4 r	5.2	4.8 r	-4.6 r	-6.0 r	-5.0
III	4.3 r	4.7	0.4 r	1.5 r	-1.4 r	-2.7
II	-3.5	-0.7	2.9	-2.3	-6.6	1.3
I	1.3 r	3.0	1.8 r	1.8 r	-2.5 r	0.6
Percent change from corresponding quarter of previous year						
2013 ANNUAL	1.8 r	2.5 r	0.7 r	0.9 r	-0.5 r	-0.9 r
2013 IV	1.9 r	3.0 r	1.1 r	0.9 r	-0.3 r	-1.0 r
III	2.1 r	2.4	0.3 r	1.6 r	0.1 r	-0.5 r
II	1.8 r	2.1	0.3 r	0.9 r	-0.5 r	-0.9
I	1.4 r	2.6	1.1 r	0.3 r	-1.3 r	-1.1
2012 ANNUAL	1.8	4.1	2.3	1.9	-0.2	0.1
2012 IV	1.8	3.3	1.5 r	3.2 r	1.3 r	1.5
III	1.3	3.9	2.6	1.0	-0.7	-0.3
II	2.6	5.1	2.4	2.0	0.1	-0.6
I	1.5 r	4.3	2.8	1.3 r	-1.5 r	-0.2
2011 ANNUAL	1.0	3.1	2.1	1.3	-1.8	0.4
2011 IV	0.6	3.0	2.4 r	-0.9	-4.1	-1.5
III	0.9 r	2.1	1.2	1.4	-2.2 r	0.6
II	-0.1 r	2.1	2.2 r	1.3	-1.9 r	1.4
I	2.6	5.1	2.4	3.6	1.5	1.0
Indexes 2009=100						
2013 ANNUAL	111.3 r	116.9 r	105.1 r	106.7 r	98.2 r	95.9 r
2013 IV	111.7 r	118.2 r	105.8 r	107.2 r	98.2 r	96.0 r
III	111.4 r	116.8 r	104.9 r	106.9 r	98.1 r	96.0 r
II	111.3 r	116.4	104.6 r	106.8 r	98.7 r	95.9 r
I	110.6 r	116.3	105.2 r	106.0 r	97.9 r	95.8 r
2012 ANNUAL	109.3 r	114.1	104.4 r	105.7 r	98.8 r	96.8
2012 IV	109.6 r	114.8	104.7 r	106.2 r	98.5 r	96.9 r
III	109.0 r	114.0	104.6 r	105.2 r	98.1 r	96.5 r
II	109.3 r	114.0	104.3 r	105.8 r	99.2 r	96.8 r
I	109.1 r	113.4	104.0 r	105.7 r	99.3 r	96.9 r
2011 ANNUAL	107.3 r	109.5	102.0 r	103.8 r	99.0 r	96.7 r
2011 IV	107.7 r	111.2	103.2 r	102.9 r	97.2 r	95.5 r
III	107.6 r	109.8	102.0 r	104.1 r	98.7 r	96.7 r
II	106.5 r	108.5	101.9 r	103.7 r	99.1 r	97.4 r
I	107.5 r	108.7	101.1 r	104.3 r	100.8 r	97.1 r

See footnotes following Table 6.
r=revised

March 6, 2014
Source: Bureau of Labor Statistics

Table 4. Durable manufacturing sector: Productivity, hourly compensation, and unit labor costs, seasonally adjusted

Year and quarter	Output per hour of all persons	Output	Hours of all persons	Compensation per hour (1)	Real compensation per hour (2)	Unit labor costs
Percent change from previous quarter at annual rate(5)						
2013 ANNUAL	2.7 r	3.7 r	1.0 r	0.6 r	-0.9 r	-2.0 r
2013 IV	3.0 r	7.5 r	4.4 r	1.7 r	0.8 r	-1.3 r
III	1.6 r	3.2	1.6 r	0.9 r	-1.6 r	-0.7 r
II	3.7 r	1.5	-2.1 r	2.5 r	2.5 r	-1.1
I	3.5 r	6.4	2.9 r	-1.5 r	-3.0 r	-4.8
2012 ANNUAL	4.0	7.0	2.9	1.5	-0.6 r	-2.3
2012 IV	3.4 r	3.8	0.3 r	4.3 r	2.1 r	0.9
III	-0.6 r	0.0	0.6 r	-3.4 r	-5.3 r	-2.8 r
II	3.1 r	5.0	1.9 r	-1.2 r	-2.1 r	-4.1
I	9.6 r	13.0	3.1 r	12.8 r	10.3 r	2.9
2011 ANNUAL	2.4	6.3	3.8	0.9	-2.2	-1.5
2011 IV	2.0 r	9.5	7.4 r	-5.9 r	-7.2 r	-7.8
III	7.0 r	7.5	0.4 r	2.4 r	-0.5 r	-4.3
II	-5.1 r	-0.2	5.2 r	-4.4 r	-8.6 r	0.8
I	2.9 r	6.9	3.9 r	1.6 r	-2.7 r	-1.3
Percent change from corresponding quarter of previous year						
2013 ANNUAL	2.7 r	3.7 r	1.0 r	0.6 r	-0.9 r	-2.0 r
2013 IV	2.9 r	4.6 r	1.6 r	0.9 r	-0.3 r	-2.0 r
III	3.0 r	3.7	0.6	1.5	0.0 r	-1.4 r
II	2.5 r	2.9	0.4 r	0.4 r	-1.0 r	-2.0
I	2.3 r	3.8	1.4 r	-0.5 r	-2.1 r	-2.7
2012 ANNUAL	4.0	7.0	2.9	1.5	-0.6 r	-2.3
2012 IV	3.8 r	5.3	1.5 r	3.0	1.1	-0.8
III	3.5	6.8	3.2	0.3 r	-1.3	-3.0
II	5.4	8.7	3.2 r	1.8	-0.1	-3.4
I	3.2	7.3	4.0 r	1.0 r	-1.8 r	-2.2
2011 ANNUAL	2.4	6.3	3.8	0.9	-2.2	-1.5
2011 IV	1.6	5.9	4.2	-1.6 r	-4.8	-3.2
III	1.8	4.5	2.6	1.2	-2.4 r	-0.6
II	0.6 r	5.1	4.4 r	0.2 r	-3.1 r	-0.5
I	5.7	9.9	3.9	4.1	1.9	-1.6
Indexes 2009=100						
2013 ANNUAL	120.5 r	129.8 r	107.7 r	105.6 r	97.3 r	87.7 r
2013 IV	121.7 r	132.2 r	108.7 r	106.3 r	97.3 r	87.3 r
III	120.8 r	129.9 r	107.5 r	105.8 r	97.1 r	87.6 r
II	120.3 r	128.8	107.1 r	105.6 r	97.5 r	87.7 r
I	119.2 r	128.4	107.7 r	104.9 r	96.9 r	88.0 r
2012 ANNUAL	117.4 r	125.1	106.6 r	105.0 r	98.1 r	89.5 r
2012 IV	118.2 r	126.4	106.9 r	105.3 r	97.7 r	89.1 r
III	117.2 r	125.2	106.8 r	104.2 r	97.2 r	88.9 r
II	117.4 r	125.2	106.6 r	105.1 r	98.5 r	89.5 r
I	116.5 r	123.7	106.2 r	105.4 r	99.0 r	90.5 r
2011 ANNUAL	112.9 r	116.9	103.6 r	103.4 r	98.6 r	91.6
2011 IV	113.9 r	120.0	105.3 r	102.3 r	96.6 r	89.8 r
III	113.3 r	117.3	103.5 r	103.8 r	98.5 r	91.6 r
II	111.4 r	115.2	103.4 r	103.2 r	98.6 r	92.6 r
I	112.9 r	115.2	102.1 r	104.4 r	100.8 r	92.5 r

See footnotes following Table 6.
r=revised

March 6, 2014
Source: Bureau of Labor Statistics

Table 5. Nondurable manufacturing sector: Productivity, hourly compensation, and unit labor costs, seasonally adjusted

Year and quarter	Output per hour of all persons	Output	Hours of all persons	Compensation per hour (1)	Real compensation per hour (2)	Unit labor costs
Percent change from previous quarter at annual rate(5)						
2013 ANNUAL	1.1 r	1.1 r	0.1 r	1.5 r	0.1 r	0.5 r
2013 IV	-0.1 r	2.4 r	2.4 r	0.2 r	-0.6 r	0.3 r
III	-1.0 r	-0.6 r	0.4 r	-0.5 r	-3.0 r	0.6 r
II	1.2 r	-1.1	-2.3 r	3.7 r	3.7 r	2.5
I	4.6 r	4.3	-0.3 r	0.4 r	-1.1 r	-4.0
2012 ANNUAL	-0.1	1.1	1.3	2.4	0.3	2.5
2012 IV	0.9 r	1.5	0.7 r	3.6 r	1.3 r	2.7
III	-1.7 r	0.2	1.9 r	-0.8 r	-2.8 r	0.9 r
II	-1.5 r	-1.1	0.4 r	3.9 r	2.9 r	5.5
I	0.2 r	3.4	3.2 r	8.3 r	5.8 r	8.1
2011 ANNUAL	1.2	0.5	-0.6	1.7	-1.4	0.6
2011 IV	0.3 r	0.8	0.5 r	-2.6 r	-4.0 r	-2.9
III	1.9 r	2.2	0.4 r	-0.3 r	-3.1 r	-2.1
II	0.1 r	-0.8	-0.8 r	1.3 r	-3.1 r	1.3
I	1.4	-0.2	-1.6	1.8	-2.5	0.4
Percent change from corresponding quarter of previous year						
2013 ANNUAL	1.1 r	1.1 r	0.1 r	1.5 r	0.1 r	0.5 r
2013 IV	1.1 r	1.2 r	0.1 r	0.9 r	-0.3 r	-0.2 r
III	1.4 r	1.0 r	-0.4 r	1.8 r	0.2 r	0.4 r
II	1.2 r	1.2	0.0 r	1.7 r	0.2 r	0.5
I	0.5 r	1.2	0.7 r	1.8	0.1	1.2
2012 ANNUAL	-0.1	1.1	1.3	2.4	0.3	2.5
2012 IV	-0.5	1.0	1.5	3.7 r	1.8	4.3
III	-0.7	0.8	1.5	2.1	0.4	2.8
II	0.2	1.3	1.1 r	2.3 r	0.3	2.0
I	0.6	1.4	0.8 r	1.6 r	-1.2	1.0
2011 ANNUAL	1.2	0.5	-0.6	1.7	-1.4	0.6
2011 IV	0.9	0.5	-0.4	0.0	-3.2	-0.8
III	1.3	0.2	-1.0	1.5	-2.1 r	0.3
II	1.2 r	-0.1	-1.2	3.0	-0.4	1.8
I	1.3 r	1.4	0.1	2.4 r	0.3	1.1
Indexes 2009=100						
2013 ANNUAL	105.2 r	106.2 r	100.9 r	108.2 r	99.6 r	102.8 r
2013 IV	105.2 r	106.5 r	101.3 r	108.4 r	99.3 r	103.1 r
III	105.2 r	105.9 r	100.7 r	108.4 r	99.5 r	103.0 r
II	105.5 r	106.0	100.6 r	108.5 r	100.3 r	102.9 r
I	105.1 r	106.4	101.1 r	107.5 r	99.3 r	102.3 r
2012 ANNUAL	104.1 r	105.0	100.8 r	106.6 r	99.6 r	102.3 r
2012 IV	104.0 r	105.2	101.2 r	107.4 r	99.6 r	103.3 r
III	103.8 r	104.8	101.1 r	106.5 r	99.3 r	102.6
II	104.2 r	104.8	100.6 r	106.7 r	100.0 r	102.4 r
I	104.6 r	105.1	100.5 r	105.7 r	99.3 r	101.0 r
2011 ANNUAL	104.2 r	103.8	99.6 r	104.1 r	99.2 r	99.8 r
2011 IV	104.5 r	104.2	99.7 r	103.6 r	97.9 r	99.1 r
III	104.5 r	104.0	99.5 r	104.3 r	98.9 r	99.8
II	104.0 r	103.4	99.5 r	104.3 r	99.7 r	100.4 r
I	104.0 r	103.6	99.7 r	104.0 r	100.5 r	100.0 r

See footnotes following Table 6.
r=revised

March 6, 2014
Source: Bureau of Labor Statistics

Table 6. Nonfinancial corporate sector: Productivity, hourly compensation, unit labor costs, unit profits, and prices, seasonally adjusted

Year and quarter	Output per all-employee hour	Output	Employee hours	Hourly compensation (1)	Real hourly compensation (2)	Unit labor costs	Unit non-labor costs (6)	Total unit cost (7)	Unit profits (8)	Implicit price deflator (4)
Percent change from previous quarter at annual rate(5)										
2013 III	-0.7 r	1.7	2.4 r	0.9 r	-1.7 r	1.6	3.1	2.1	2.4	2.1
II	3.3	4.9	1.6	3.7	3.7	0.4	-5.6	-1.6	8.0	-0.3
I	-4.2 r	-1.3	3.1 r	-6.2 r	-7.6 r	-2.1	9.1	1.5	0.3	1.3
2012 ANNUAL	1.4	3.7	2.3	2.8	0.7	1.4	0.2	1.0	3.8	1.4
2012 IV	4.8 r	6.4	1.5 r	7.9 r	5.6 r	3.0	-4.2	0.6	9.6	1.8
III	-3.4 r	-2.0	1.5 r	0.2 r	-1.8 r	3.7	3.0	3.5	-7.4	1.8
II	0.7 r	1.6	0.8 r	1.1 r	0.1 r	0.3	1.1	0.6	5.8	1.3
I	5.4 r	8.9	3.3 r	11.8 r	9.2 r	6.1	-0.6	3.8	-2.2	2.9
2011 ANNUAL	0.3	3.0	2.8	2.1	-1.0	1.9	0.7	1.5	7.7	2.3
2011 IV	2.2 r	4.5	2.3 r	-3.9 r	-5.3 r	-6.0	-1.3	-4.5	0.8	-3.7
III	-3.8 r	-0.7	3.2 r	1.1 r	-1.8 r	5.1	3.2	4.5	7.6	4.9
II	2.1 r	6.4	4.2 r	-2.1 r	-6.4 r	-4.1	-1.8	-3.3	54.1	3.1
I	4.8 r	6.1	1.2 r	9.5 r	4.8 r	4.5	-0.3	2.9	-16.9	0.0
Percent change from corresponding quarter of previous year										
2013 III	0.7	2.9	2.1	1.4	-0.1	0.7	0.4	0.6	5.0	1.2
II	0.0 r	1.9	1.9 r	1.2 r	-0.2 r	1.2	0.4	0.9	2.4	1.2
I	-0.6 r	1.1	1.7 r	0.6 r	-1.1 r	1.2	2.1	1.5	1.9	1.6
2012 ANNUAL	1.4	3.7	2.3	2.8	0.7	1.4	0.2	1.0	3.8	1.4
2012 IV	1.8	3.6	1.8 r	5.1	3.2	3.2	-0.2	2.1	1.2	2.0
III	1.2	3.2	2.0	2.1	0.4	0.9	0.5	0.8	-0.9	0.5
II	1.1 r	3.5	2.4	2.3	0.4	1.3	0.6	1.0	2.9	1.3
I	1.4	4.7	3.2	1.5 r	-1.2	0.1	-0.2	0.0	13.1	1.7
2011 ANNUAL	0.3	3.0	2.8	2.1	-1.0	1.9	0.7	1.5	7.7	2.3
2011 IV	1.3 r	4.0	2.7 r	1.0 r	-2.3	-0.3	-0.1	-0.2	8.5	1.0
III	-0.7	2.1	2.8 r	2.1 r	-1.6 r	2.9	1.7	2.5	5.4	2.9
II	0.7	3.5	2.7 r	2.1	-1.2	1.4	0.4	1.0	12.8	2.6
I	-0.2	2.6	2.8	3.3	1.2 r	3.5	0.9	2.6	4.1	2.8
Indexes 2009=100										
2013 III	107.2 r	115.5	107.8 r	107.9 r	99.1 r	100.7	98.6	100.0	149.6	105.2
II	107.3 r	115.0	107.1 r	107.7 r	99.5 r	100.3	97.9	99.5	148.7	104.6
I	106.5 r	113.6	106.7 r	106.7 r	98.6 r	100.2	99.3	99.9	145.9	104.7
2012 ANNUAL	107.1 r	112.9	105.4 r	106.8 r	99.8 r	99.7	97.5	99.0	144.2	103.7
2012 IV	107.6 r	114.0	105.9 r	108.4 r	100.6 r	100.7	97.2	99.5	145.8	104.4
III	106.4 r	112.2	105.5 r	106.4 r	99.2 r	100.0	98.2	99.4	142.5	103.9
II	107.3 r	112.8	105.1 r	106.4 r	99.7 r	99.1	97.5	98.6	145.3	103.4
I	107.1 r	112.4	104.9 r	106.1 r	99.7 r	99.0	97.2	98.4	143.2	103.1
2011 ANNUAL	105.7 r	108.8	103.0 r	103.9 r	99.1 r	98.3	97.4	98.0	139.0	102.3
2011 IV	105.7 r	110.0	104.1 r	103.2 r	97.5 r	97.6	97.4	97.5	144.0	102.4
III	105.2 r	108.8	103.5 r	104.2 r	98.8 r	99.1	97.7	98.6	143.8	103.3
II	106.2 r	109.0	102.7 r	103.9 r	99.3 r	97.9	96.9	97.6	141.2	102.1
I	105.6 r	107.3	101.6 r	104.5 r	100.9 r	98.9	97.4	98.4	126.7	101.3

See footnotes following Table 6.
r=revised

March 6, 2014
Source: Bureau of Labor Statistics

SOURCES: Output data are from the Bureau of Economic Analysis and the Census Bureau of the U.S. Department of Commerce; the Bureau of Labor Statistics, U.S. Department of Labor; and the Federal Reserve Board. Hours and compensation data are from the Bureau of Labor Statistics and the Bureau of Economic Analysis.

RELIABILITY: Productivity and cost measures are regularly revised as more complete information becomes available. The measures are first published within 40 days of the close of the reference period; revisions appear 30 days later, and second revisions after an additional 60 days. In the business sector, the third publication (second revision) of a quarterly index of output per hour of all persons has differed from the initial value by between -1.6 and 1.5 index points approximately 95 percent of the time. This interval is based on the performance of this measure between the fourth quarter of 1995 and the third quarter of 2013.

Table Footnotes

- (1) Wages and salaries of employees plus employers' contributions for social insurance and private benefit plans. Except for nonfinancial corporations, where there are no self-employed, data also include an estimate of wages, salaries, and supplemental payments for the self-employed.
- (2) The change for recent quarters is based on the Consumer Price Index for all urban consumers (CPI-U). The trend from 1978-2012 is based on the Consumer Price Index research series (CPI-U-RS).
- (3) Unit nonlabor payments include profits, consumption of fixed capital, taxes on production and imports less subsidies, net interest and miscellaneous payments, business current transfer payments, rental income of persons, and the current surplus of government enterprises.
- (4) Current dollar output divided by the output index.
- (5) Quarterly changes: Percent change compounded at annual rate is calculated using index numbers to three decimal places. Indexes published in the news release are rounded to one decimal place for convenience. Annual changes: Percent change is calculated using annual indexes to three decimal places.
- (6) Unit nonlabor costs include consumption of fixed capital, taxes on production and imports less subsidies, net interest and miscellaneous payments, and business current transfer payments.
- (7) Total unit costs are the sum of unit labor and nonlabor costs.
- (8) Unit profits include corporate profits before tax with inventory valuation and capital consumption adjustments.

Appendix table 1.

Business sector: Revised productivity, hourly compensation, unit labor costs, and prices, seasonally adjusted

Year and quarter	Output per hour of all persons	Output	Hours of all persons	Compensation per hour (1)	Real compensation per hour (2)	Unit labor costs	Unit nonlabor payments (3)	Implicit price deflator (4)
Percent change from previous quarter at annual rate(5)								
2010 ANNUAL	3.3	3.1	-0.1	2.0	0.3	-1.2	4.4	1.1
2010 IV	1.5 r	3.7	2.2 r	1.7 r	-1.4 r	0.1	5.8	2.6
III	2.6	4.2	1.5 r	2.5	1.2 r	-0.1	4.3	1.8
II	1.3 r	5.0	3.6 r	4.5 r	4.7 r	3.1 r	-0.6 r	1.5
I	1.4 r	1.8	0.4 r	-2.8 r	-3.5 r	-4.1 r	10.0	1.7
2009 ANNUAL	3.3	-4.1	-7.1	1.0 r	1.4	-2.2	3.8	0.3
2009 IV	4.9 r	4.8	-0.1 r	2.4 r	-0.8	-2.4	6.3	1.2
III	6.6 r	1.4	-4.9 r	3.1	-0.4 r	-3.3	3.7	-0.4
II	8.1 r	-1.0	-8.4 r	9.9 r	7.9 r	1.7	-6.1	-1.6
I	3.1	-7.2	-10.0	-9.4	-7.1 r	-12.2	23.1	0.8
2008 ANNUAL	0.8	-1.2	-2.0	2.6 r	-1.2 r	1.8	1.1	1.5
2008 IV	-2.4	-11.3	-9.1 r	4.0 r	14.1 r	6.6	-10.4	-0.6
III	0.9	-3.4	-4.3 r	3.4	-2.7	2.5	3.0	2.7
II	3.9	1.7	-2.1	0.6	-4.4	-3.2	9.5	1.8
I	-3.4	-4.4	-1.1	3.8 r	-0.7	7.4	-6.6	1.5
Percent change from corresponding quarter of previous year								
2010 ANNUAL	3.3	3.1	-0.1	2.0	0.3	-1.2	4.4	1.1
2010 IV	1.7 r	3.7	1.9	1.4 r	0.2 r	-0.3	4.8	1.9
III	2.5	3.9	1.3	1.6	0.4	-0.9	4.9	1.5
II	3.5	3.2	-0.3	1.8	0.0	-1.7	4.8	1.0
I	5.2	1.7	-3.3	3.1 r	0.7	-2.0	3.3	0.2
2009 ANNUAL	3.3	-4.1	-7.1	1.0 r	1.4	-2.2	3.8	0.3
2009 IV	5.6	-0.6	-5.9	1.3	-0.2	-4.2	6.2	0.0
III	3.8	-4.7	-8.1 r	1.7	3.3 r	-2.0	1.8	-0.5
II	2.3 r	-5.8	-8.0	1.7 r	2.7 r	-0.6	1.6	0.3
I	1.3 r	-5.2	-6.4 r	-0.5	-0.3	-1.8	5.6	1.2
2008 ANNUAL	0.8	-1.2	-2.0	2.6 r	-1.2 r	1.8	1.1	1.5
2008 IV	-0.3	-4.5	-4.2	2.9	1.3	3.2	-1.4	1.3
III	0.6	-1.3	-1.9	2.8	-2.3	2.2	1.3	1.8
II	1.5	0.3	-1.2	2.4	-1.8	0.8	2.3	1.4
I	1.4	0.8	-0.6	2.5	-1.6	1.1	2.3	1.6
Indexes 2009=100								
2010 ANNUAL	103.3 r	103.1	99.9 r	102.0 r	100.3 r	98.8	104.4 r	101.1
2010 IV	104.0 r	104.7	100.7 r	102.9 r	100.5 r	99.0 r	106.0 r	101.9
III	103.6 r	103.7	100.2 r	102.5 r	100.8 r	98.9	104.6 r	101.3
II	102.9 r	102.7	99.8 r	101.8 r	100.5 r	99.0 r	103.5 r	100.9
I	102.6 r	101.5	98.9 r	100.7 r	99.4 r	98.2 r	103.6 r	100.5
2009 ANNUAL	100.0	100.0	100.0	100.0	100.0	100.0	100.0	100.0
2009 IV	102.2 r	101.0	98.8 r	101.4 r	100.3 r	99.2 r	101.2 r	100.1
III	101.0 r	99.8	98.8 r	100.8 r	100.5 r	99.8	99.7 r	99.8
II	99.4 r	99.5	100.1 r	100.1 r	100.6 r	100.7 r	98.8 r	99.9
I	97.5 r	99.7	102.3 r	97.7 r	98.7 r	100.3 r	100.3 r	100.3
2008 ANNUAL	96.9 r	104.3	107.7 r	99.0 r	98.6 r	102.2 r	96.3 r	99.7
2008 IV	96.7 r	101.6	105.0 r	100.2 r	100.5 r	103.6 r	95.3 r	100.1
III	97.3 r	104.7	107.6 r	99.2 r	97.2 r	101.9 r	97.9 r	100.2
II	97.1 r	105.6	108.7 r	98.4 r	97.9 r	101.3 r	97.2 r	99.6
I	96.2 r	105.2	109.3 r	98.2 r	99.0 r	102.1 r	95.0 r	99.1

See footnotes following Table 6.
r=revisedMarch 6, 2014
Source: Bureau of Labor Statistics

Appendix table 2.

Nonfarm business sector: Revised productivity, hourly compensation, unit labor costs, and prices, seasonally adjusted

Year and quarter	Output per hour of all persons	Output	Hours of all persons	Compensation per hour (1)	Real compensation per hour (2)	Unit labor costs	Unit nonlabor payments (3)	Implicit price deflator (4)

Percent change from previous quarter at annual rate(5)								
2010 ANNUAL	3.3	3.2	-0.1	2.1	0.4	-1.2	4.0	1.0
2010 IV	1.9 r	4.2	2.2 r	1.9 r	-1.2 r	-0.1	4.7	2.0
III	2.4	4.2	1.8	2.3	1.0 r	-0.1	3.7	1.5
II	1.2 r	4.7	3.4 r	4.7 r	5.0 r	3.5	-0.8 r	1.6
I	2.0 r	2.0	0.1 r	-2.5 r	-3.2 r	-4.4	10.2	1.6
2009 ANNUAL	3.1 r	-4.3	-7.2	1.1	1.5	-2.0	4.4	0.6
2009 IV	4.8 r	5.0	0.3	2.4	-0.7 r	-2.2	4.5	0.5
III	5.9	0.9	-4.8 r	2.8	-0.7 r	-2.9	4.1	-0.1
II	8.0 r	-1.0	-8.4 r	10.1 r	8.1 r	1.9	-6.5	-1.6
I	3.2	-7.3	-10.1 r	-9.5	-7.1	-12.3	25.2	1.4
2008 ANNUAL	0.8	-1.3	-2.0	2.7	-1.1	2.0	0.9	1.5
2008 IV	-2.7 r	-12.0	-9.6 r	4.4 r	14.6 r	7.3	-9.6	0.2
III	0.9	-3.3	-4.2	3.5	-2.7	2.5	3.7	3.0
II	4.0	2.0	-1.9	0.3	-4.7	-3.6	10.2	1.8
I	-3.9	-5.0	-1.2	4.0	-0.5	8.2	-7.5	1.6

Percent change from corresponding quarter of previous year								
2010 ANNUAL	3.3	3.2	-0.1	2.1	0.4	-1.2	4.0	1.0
2010 IV	1.9	3.8	1.9 r	1.6	0.4	-0.3	4.4 r	1.7
III	2.6	4.0	1.4	1.7	0.5	-0.8	4.3	1.3
II	3.5	3.2	-0.3	1.8	0.0	-1.6	4.4	0.9
I	5.2 r	1.7	-3.3 r	3.1	0.8 r	-1.9	2.9	0.1
2009 ANNUAL	3.1 r	-4.3	-7.2	1.1	1.5	-2.0	4.4	0.6
2009 IV	5.5	-0.7	-5.8	1.2	-0.3	-4.0	6.2	0.0
III	3.5 r	-5.0	-8.3	1.7 r	3.4	-1.8	2.5 r	-0.1
II	2.3	-6.0	-8.1 r	1.9	2.9	-0.4	2.3	0.7
I	1.3	-5.3	-6.5 r	-0.5	-0.3	-1.8	6.6	1.6
2008 ANNUAL	0.8	-1.3	-2.0	2.7	-1.1	2.0	0.9	1.5
2008 IV	-0.5 r	-4.7	-4.3	3.0	1.4	3.5	-1.1	1.6
III	0.7	-1.4	-2.1	3.0	-2.1	2.3	1.2	1.9
II	1.6	0.3	-1.3	2.5	-1.7	0.9	1.9	1.3
I	1.3	0.8	-0.5	2.4	-1.7	1.1	1.9	1.4

Indexes 2009=100								
2010 ANNUAL	103.3 r	103.2	99.9	102.1 r	100.4 r	98.8	104.0 r	101.0
2010 IV	104.0 r	104.8	100.7 r	103.0 r	100.6 r	99.0 r	105.3 r	101.6
III	103.5 r	103.7	100.2 r	102.5 r	100.9 r	99.0 r	104.1 r	101.2
II	102.9 r	102.7	99.7 r	102.0 r	100.7 r	99.1 r	103.2	100.8
I	102.6 r	101.5	98.9 r	100.8 r	99.4 r	98.2 r	103.4 r	100.4
2009 ANNUAL	100.0	100.0	100.0	100.0	100.0	100.0	100.0	100.0
2009 IV	102.1 r	101.0	98.9 r	101.4 r	100.3 r	99.3 r	100.9 r	100.0
III	100.9 r	99.7	98.8 r	100.8 r	100.4 r	99.9 r	99.8	99.9
II	99.5 r	99.5	100.0 r	100.1 r	100.6 r	100.6 r	98.8 r	99.9
I	97.6 r	99.8	102.3 r	97.7 r	98.7 r	100.2	100.5 r	100.3
2008 ANNUAL	97.0 r	104.5	107.8 r	98.9 r	98.6 r	102.0 r	95.8 r	99.4
2008 IV	96.8 r	101.7	105.0 r	100.2 r	100.5 r	103.5 r	95.0 r	99.9
III	97.5 r	105.0	107.7 r	99.1 r	97.2 r	101.7 r	97.4 r	99.9
II	97.3 r	105.9	108.9 r	98.3 r	97.8 r	101.1 r	96.5 r	99.2
I	96.3 r	105.4	109.4 r	98.2 r	99.0 r	102.0 r	94.2 r	98.7

See footnotes following Table 6.
r=revisedMarch 6, 2014
Source: Bureau of Labor Statistics

Appendix table 3.

Manufacturing sector: Revised productivity, hourly compensation, and unit labor costs, seasonally adjusted

Year and quarter	Output per hour of all persons	Output	Hours of all persons	Compensation per hour (1)	Real compensation per hour (2)	Unit labor costs
Percent change from previous quarter at annual rate(5)						
2010 ANNUAL	6.3	6.3	0.0 r	2.4	0.7	-3.7
2010 IV	1.6 r	1.4	-0.2 r	4.8 r	1.7 r	3.2
III	0.4 r	4.9	4.4 r	1.1 r	-0.3 r	0.7
II	7.4 r	11.5	3.8 r	6.8 r	7.0 r	-0.6
I	5.6 r	7.5	1.8 r	-4.4 r	-5.2 r	-9.5 r
2009 ANNUAL	0.0 r	-12.9	-12.9 r	3.4 r	3.8	3.4
2009 IV	7.6 r	7.2	-0.4 r	5.5 r	2.3 r	-1.9
III	12.4 r	7.4	-4.4 r	1.6 r	-1.9 r	-9.6
II	6.3 r	-10.1	-15.4 r	10.0 r	8.0 r	3.5
I	-2.4 r	-22.6	-20.7 r	-5.9 r	-3.4 r	-3.6
2008 ANNUAL	-0.6	-4.5	-4.0	2.7	-1.1	3.3
2008 IV	-6.7 r	-21.0	-15.3 r	10.0 r	20.7 r	17.9
III	-5.4 r	-13.3	-8.3 r	5.1 r	-1.1 r	11.2
II	-5.8 r	-7.3	-1.6 r	1.9 r	-3.2 r	8.1
I	-0.1 r	-2.8	-2.7 r	1.0 r	-3.3 r	1.2
Percent change from corresponding quarter of previous year						
2010 ANNUAL	6.3	6.3	0.0 r	2.4	0.7	-3.7
2010 IV	3.7 r	6.3	2.4 r	2.0 r	0.7 r	-1.7
III	5.2 r	7.7	2.4	2.1 r	0.9	-2.9
II	8.2	8.4	0.1 r	2.3 r	0.5 r	-5.5
I	8.0 r	2.7	-4.9 r	3.0	0.7	-4.5 r
2009 ANNUAL	0.0 r	-12.9	-12.9 r	3.4 r	3.8	3.4
2009 IV	5.8	-5.4	-10.6	2.7 r	1.2 r	-3.0
III	2.1 r	-12.3	-14.2 r	3.7 r	5.4 r	1.6
II	-2.2 r	-16.9	-15.0 r	4.6 r	5.6 r	6.9
I	-5.1	-16.3	-11.8	2.6	2.8	8.1
2008 ANNUAL	-0.6	-4.5	-4.0	2.7	-1.1	3.3
2008 IV	-4.6 r	-11.4	-7.1	4.4 r	2.8	9.4
III	-1.6	-5.7	-4.2	3.1	-2.0	4.8
II	0.6	-2.1	-2.7	1.9	-2.3	1.3
I	3.1	1.1	-2.0	1.4 r	-2.6	-1.6
Indexes 2009=100						
2010 ANNUAL	106.3 r	106.3	100.0 r	102.4 r	100.7 r	96.3
2010 IV	107.1 r	107.9	100.7 r	103.9 r	101.4 r	96.9 r
III	106.7 r	107.5	100.8 r	102.6 r	101.0 r	96.2 r
II	106.6 r	106.2	99.7 r	102.4 r	101.1 r	96.0
I	104.7 r	103.4	98.7 r	100.7 r	99.3 r	96.2 r
2009 ANNUAL	100.0	100.0	100.0	100.0	100.0	100.0
2009 IV	103.3 r	101.5	98.3 r	101.8 r	100.7 r	98.6 r
III	101.4 r	99.8	98.4 r	100.5 r	100.1 r	99.1 r
II	98.5 r	98.0	99.5 r	100.1 r	100.6 r	101.6
I	97.0 r	100.7	103.8 r	97.7 r	98.7 r	100.7 r
2008 ANNUAL	100.0 r	114.8	114.9 r	96.7 r	96.3 r	96.7 r
2008 IV	97.6 r	107.3	110.0 r	99.2 r	99.5 r	101.7 r
III	99.3 r	113.8	114.6 r	96.9 r	95.0 r	97.6
II	100.7 r	117.9	117.1 r	95.7 r	95.2 r	95.0 r
I	102.2 r	120.2	117.6 r	95.2 r	96.0 r	93.2 r

See footnotes following Table 6.
r=revised

March 6, 2014
Source: Bureau of Labor Statistics

Appendix table 4.

Durable manufacturing sector: Revised productivity, hourly compensation, and unit labor costs seasonally adjusted

Year and quarter	Output per hour of all persons	Output	Hours of all persons	Compensation per hour (1)	Real compensation per hour (2)	Unit labor costs
Percent change from previous quarter at annual rate(5)						
2010 ANNUAL	10.2	10.0	-0.2	2.5	0.8	-7.0
2010 IV	2.9 r	3.9	1.0 r	5.5 r	2.4 r	2.5
III	2.2 r	10.0	7.6 r	-1.6 r	-3.0 r	-3.7
II	15.6 r	19.2	3.2 r	11.4 r	11.6 r	-3.6
I	11.4 r	13.5	1.9 r	-7.4 r	-8.1 r	-16.9
2009 ANNUAL	-5.8	-20.3	-15.4	4.0	4.4	10.4
2009 IV	9.3 r	9.2	-0.1 r	6.7 r	3.5 r	-2.4
III	18.2 r	11.2	-6.0 r	1.0 r	-2.5 r	-14.6
II	1.0 r	-19.4	-20.2 r	14.2 r	12.1 r	13.1
I	-12.7 r	-34.1	-24.5 r	-6.3 r	-3.9 r	7.3
2008 ANNUAL	-1.7	-5.8	-4.2	2.3	-1.5	4.1
2008 IV	-18.8 r	-31.0	-15.0 r	8.7 r	19.3 r	33.9
III	-6.2 r	-16.9	-11.4 r	6.5 r	0.2 r	13.5
II	-8.6 r	-9.9	-1.4 r	2.2 r	-2.9 r	11.8
I	-1.9 r	-3.1	-1.2 r	-0.5 r	-4.7 r	1.5
Percent change from corresponding quarter of previous year						
2010 ANNUAL	10.2	10.0	-0.2	2.5	0.8	-7.0
2010 IV	7.9 r	11.5	3.4 r	1.7 r	0.5 r	-5.7
III	9.5	12.9	3.1	2.0	0.7 r	-6.9
II	13.6	13.2	-0.3	2.7	0.9 r	-9.6
I	9.8 r	2.7	-6.5 r	3.3 r	1.0 r	-5.9
2009 ANNUAL	-5.8	-20.3	-15.4	4.0	4.4	10.4
2009 IV	3.3 r	-10.4	-13.3 r	3.6	2.1 r	0.3
III	-4.1 r	-20.1	-16.7 r	4.1 r	5.8 r	8.5
II	-9.5 r	-25.7	-17.9 r	5.5 r	6.5 r	16.5
I	-11.7	-23.6	-13.5	2.6	2.8	16.2
2008 ANNUAL	-1.7	-5.8	-4.2	2.3	-1.5	4.1
2008 IV	-9.1	-15.9	-7.5	4.2	2.5 r	14.6
III	-2.2	-7.1	-5.1	3.2	-2.0	5.4
II	0.1 r	-2.4	-2.5	1.6	-2.6	1.5
I	4.3	2.3	-1.9	0.6	-3.5 r	-3.6
Indexes 2009=100						
2010 ANNUAL	110.2 r	110.0	99.8 r	102.5 r	100.8 r	93.0
2010 IV	112.1 r	113.3	101.1 r	104.0 r	101.5 r	92.8 r
III	111.3 r	112.2	100.9 r	102.6 r	100.9 r	92.2 r
II	110.7 r	109.6	99.0 r	103.0 r	101.7 r	93.1 r
I	106.8 r	104.9	98.2 r	100.3 r	98.9 r	93.9 r
2009 ANNUAL	100.0	100.0	100.0	100.0	100.0	100.0
2009 IV	103.9 r	101.6	97.8 r	102.2 r	101.1 r	98.4 r
III	101.6 r	99.4	97.8 r	100.6 r	100.2 r	99.0 r
II	97.5	96.8	99.3	100.3	100.8	102.9
I	97.2 r	102.2	105.1 r	97.1 r	98.0 r	99.8 r
2008 ANNUAL	106.2 r	125.5	118.2 r	96.2 r	95.8 r	90.6 r
2008 IV	100.6 r	113.4	112.7 r	98.7 r	99.0 r	98.1
III	106.0 r	124.4	117.4 r	96.6 r	94.7 r	91.2 r
II	107.7 r	130.3	121.0 r	95.1 r	94.7 r	88.3 r
I	110.1 r	133.7	121.4 r	94.6 r	95.4 r	85.9 r

See footnotes following Table 6.
r=revisedMarch 6, 2014
Source: Bureau of Labor Statistics

Appendix table 5.

Nondurable manufacturing sector: Revised productivity, hourly compensation, and unit labor costs seasonally adjusted

Year and quarter	Output per hour of all persons	Output	Hours of all persons	Compensation per hour (1)	Real compensation per hour (2)	Unit labor costs
Percent change from previous quarter at annual rate(5)						
2010 ANNUAL	3.0 r	3.3	0.2	2.3	0.6	-0.7
2010 IV	1.8 r	-0.3	-2.1 r	3.3 r	0.3 r	1.5
III	1.4 r	1.0	-0.4 r	5.5 r	4.1 r	4.1
II	0.6 r	5.4	4.8 r	-0.9 r	-0.6 r	-1.5
I	2.0 r	3.6	1.6 r	1.1 r	0.4	-0.9
2009 ANNUAL	2.5	-6.4	-8.7	3.0	3.4	0.5
2009 IV	6.6	5.7	-0.8 r	3.4	0.2 r	-3.0
III	4.7 r	2.7	-1.9 r	3.1 r	-0.4 r	-1.5
II	5.4 r	-2.0	-7.1 r	4.0 r	2.0 r	-1.4
I	2.8 r	-11.5	-13.9 r	-4.0 r	-1.5 r	-6.6
2008 ANNUAL	0.0	-3.6	-3.6	3.5	-0.3	3.5
2008 IV	6.3	-10.5	-15.8	12.4	23.4	5.7
III	-8.4	-10.8	-2.6	3.3	-2.8	12.8
II	-3.2	-5.2	-2.1	1.2	-3.8	4.5
I	2.7	-2.6	-5.2	3.6	-0.8	0.9
Percent change from corresponding quarter of previous year						
2010 ANNUAL	3.0 r	3.3	0.2	2.3	0.6	-0.7
2010 IV	1.5	2.4	0.9	2.3	1.0 r	0.8
III	2.6 r	3.9	1.2	2.3	1.0	-0.4
II	3.5 r	4.4	0.9	1.7 r	-0.1 r	-1.7
I	4.7	2.5	-2.1 r	2.9 r	0.5 r	-1.7
2009 ANNUAL	2.5	-6.4	-8.7	3.0	3.4	0.5
2009 IV	4.9 r	-1.5	-6.1	1.6 r	0.1 r	-3.2
III	4.8	-5.5	-9.8	3.7	5.4	-1.0
II	1.4	-8.8	-10.0	3.8	4.8	2.4
I	-0.8	-9.5	-8.8	3.1 r	3.2	3.9
2008 ANNUAL	0.0	-3.6	-3.6	3.5	-0.3	3.5
2008 IV	-0.8	-7.3	-6.6	5.1	3.4	5.9
III	-2.1	-4.8	-2.7	3.3	-1.9	5.5
II	1.1	-1.8	-2.9	2.6	-1.7	1.4
I	1.9 r	-0.3	-2.1	3.2	-0.9	1.3
Indexes 2009=100						
2010 ANNUAL	103.0 r	103.3	100.2 r	102.3 r	100.6 r	99.3 r
2010 IV	103.6 r	103.7	100.1 r	103.5 r	101.1 r	99.9 r
III	103.1 r	103.8	100.6 r	102.7 r	101.0 r	99.6 r
II	102.8 r	103.5	100.7 r	101.3 r	100.0 r	98.6
I	102.6 r	102.1	99.5 r	101.5 r	100.2 r	98.9
2009 ANNUAL	100.0	100.0	100.0	100.0	100.0	100.0
2009 IV	102.1	101.2	99.1	101.3 r	100.1	99.2
III	100.5 r	99.9	99.4 r	100.4 r	100.0 r	99.9 r
II	99.4 r	99.2	99.8 r	99.7 r	100.2 r	100.3 r
I	98.1 r	99.7	101.7 r	98.7 r	99.6 r	100.6 r
2008 ANNUAL	97.5 r	106.9	109.6 r	97.1 r	96.7 r	99.5 r
2008 IV	97.4 r	102.8	105.6 r	99.7 r	100.0 r	102.4 r
III	95.9 r	105.7	110.2 r	96.8 r	94.9 r	101.0 r
II	98.0 r	108.8	110.9 r	96.0 r	95.6 r	98.0 r
I	98.8 r	110.2	111.5 r	95.8 r	96.5 r	96.9 r

See footnotes following Table 6.
r=revisedMarch 6, 2014
Source: Bureau of Labor Statistics

Appendix table 6.

Nonfinancial corporate sector: Revised productivity, hourly compensation, unit labor costs, unit profits, and prices, seasonally adjusted

Year and quarter	Output per all-employee hour	Output	Employee hours	Hourly compensation (1)	Real hourly compensation (2)	Unit labor costs	Unit non-labor costs (6)	Total unit cost (7)	Unit profits (8)	Implicit price deflator (4)
Percent change from previous quarter at annual rate(5)										
2010 ANNUAL	5.4	5.6	0.2	1.8	0.1	-3.4	-3.3	-3.4	29.0	0.0
2010 IV	-5.6 r	-3.1	2.7 r	0.4 r	-2.6 r	6.3	6.0	6.2	-10.6	3.7
III	2.0	4.9	2.8 r	1.1	-0.2	-0.9	-2.1	-1.3	41.4	3.7
II	-1.5 r	2.8	4.3 r	2.6 r	2.9 r	4.2	0.1	2.8	12.0	4.0
I	9.2 r	10.1	0.8 r	-2.3 r	-3.0 r	-10.5	-6.3	-9.1	36.8	-4.4
2009 ANNUAL	0.7 r	-7.1	-7.8	1.7	2.1	1.0	6.0	2.6	-5.1	1.8
2009 IV	11.8 r	11.4	-0.3 r	2.6 r	-0.6 r	-8.2	-5.9	-7.4	75.4	-0.7
III	8.0 r	2.8	-4.8	3.9 r	0.3 r	-3.8	-7.0	-4.9	25.0	-2.3
II	6.3 r	-4.0	-9.6 r	11.7 r	9.6 r	5.1	2.1	4.1	-17.5	1.7
I	-9.9	-20.5	-11.8	-11.0	-8.7	-1.3	17.6	4.6	-16.3	2.2
2008 ANNUAL	0.4	-1.3	-1.7	2.9	-0.9	2.5	6.5	3.8	-9.8	2.1
2008 IV	-3.4 r	-11.7	-8.6 r	7.0 r	17.4 r	10.8	13.3	11.6	-41.9	3.5
III	8.8	4.0	-4.4	4.5	-1.7	-3.9	-0.4	-2.8	67.2	3.5
II	2.0	-0.5	-2.5	1.5	-3.6	-0.5	6.6	1.7	1.9	1.7
I	-5.3	-5.5	-0.2	3.3 r	-1.2	9.0	10.3	9.4	-23.2	5.1
Percent change from corresponding quarter of previous year										
2010 ANNUAL	5.4	5.6	0.2	1.8	0.1	-3.4	-3.3	-3.4	29.0	0.0
2010 IV	0.9	3.6	2.7 r	0.4 r	-0.8 r	-0.4	-0.7	-0.5	18.0	1.7
III	5.2	7.2	1.9	1.0	-0.2	-4.0	-3.6	-3.9	39.6	0.6
II	6.7	6.7	-0.1 r	1.7	-0.1	-4.7	-4.8	-4.8	35.4	-0.9
I	8.8	4.9	-3.6	3.9 r	1.5 r	-4.5	-4.3	-4.5	25.4	-1.4
2009 ANNUAL	0.7 r	-7.1	-7.8	1.7	2.1	1.0	6.0	2.6	-5.1	1.8
2009 IV	3.7	-3.3	-6.8 r	1.4	0.0	-2.2	1.3	-1.0	10.9	0.2
III	0.0	-8.8	-8.8	2.5 r	4.2	2.5	6.1	3.7	-15.8	1.3
II	0.2	-8.5	-8.6 r	2.7	3.7	2.5	7.9	4.3	-9.5	2.8
I	-0.9 r	-7.7	-6.9	0.2 r	0.4	1.1	9.1	3.7	-4.6	2.8
2008 ANNUAL	0.4	-1.3	-1.7	2.9	-0.9	2.5	6.5	3.8	-9.8	2.1
2008 IV	0.4	-3.6	-4.0	4.0 r	2.4	3.6	7.3	4.8	-6.6	3.5
III	2.5	0.7	-1.8	3.2	-1.9	0.7	4.4	1.9	4.7	2.2
II	-0.5	-1.3	-0.8	2.4	-1.8	2.9	7.3	4.3	-18.2	1.2
I	-0.8 r	-0.8	0.0	2.1	-2.0 r	2.9	7.0	4.2	-17.4	1.3
Indexes 2009=100										
2010 ANNUAL	105.4	105.6	100.2	101.8	100.1	96.6	96.7	96.6	129.0	100.0
2010 IV	104.4 r	105.8	101.3 r	102.1 r	99.7 r	97.8	97.5	97.7	132.7	101.4
III	105.9 r	106.6	100.6 r	102.0 r	100.4 r	96.3	96.0	96.2	136.5	100.4
II	105.4 r	105.3	99.9 r	101.7 r	100.5 r	96.5	96.6	96.5	125.1	99.5
I	105.8 r	104.6	98.9 r	101.1 r	99.7 r	95.5	96.5	95.9	121.6	98.6
2009 ANNUAL	100.0	100.0	100.0	100.0	100.0	100.0	100.0	100.0	100.0	100.0
2009 IV	103.5 r	102.1	98.7 r	101.7 r	100.5 r	98.2	98.1	98.2	112.5	99.7
III	100.7 r	99.4	98.8 r	101.0 r	100.6 r	100.4	99.6	100.1	97.7	99.9
II	98.7 r	98.7	100.0 r	100.1 r	100.6 r	101.4	101.4	101.4	92.4	100.4
I	97.2 r	99.7	102.6 r	97.3 r	98.3 r	100.1	100.9	100.4	97.0	100.0
2008 ANNUAL	99.3 r	107.6	108.4 r	98.3 r	97.9 r	99.0	94.3	97.5	105.4	98.3
2008 IV	99.8 r	105.6	105.8 r	100.2 r	100.5 r	100.4	96.9	99.2	101.4	99.5
III	100.7 r	109.0	108.2 r	98.5 r	96.6 r	97.9	93.9	96.6	116.1	98.6
II	98.6 r	107.9	109.5 r	97.5 r	97.0 r	98.9	94.0	97.2	102.1	97.7
I	98.1 r	108.0	110.1 r	97.1 r	97.9 r	99.0	92.5	96.8	101.6	97.3

See footnotes following Table 6.
r=revisedMarch 6, 2014
Source: Bureau of Labor Statistics