

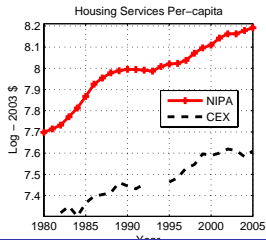
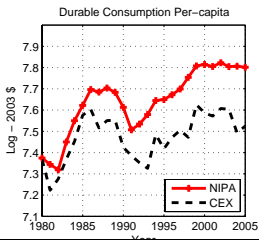
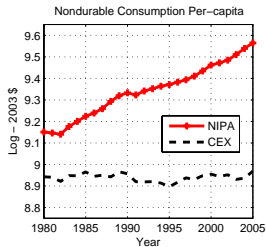
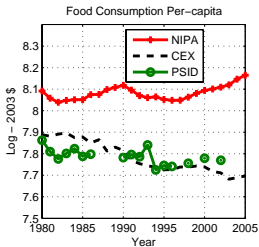
Comments on Improving Consumption Measurement

Chris Carroll
Johns Hopkins University

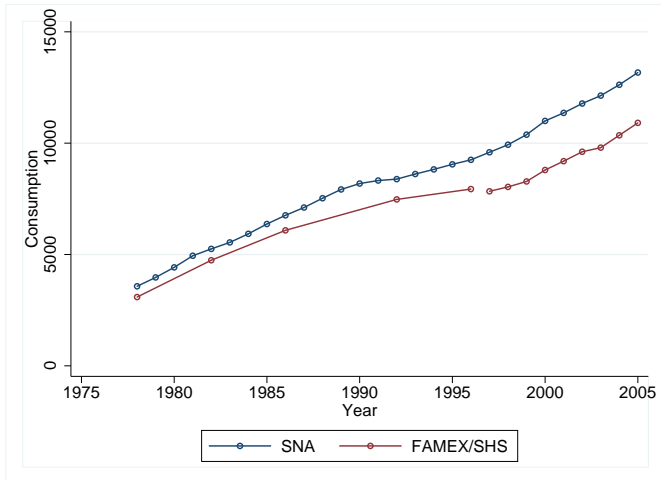
Remarks At CRIW-NBER Conference On Improving Consumption Measurement
Cambridge, MA

July 13, 2009

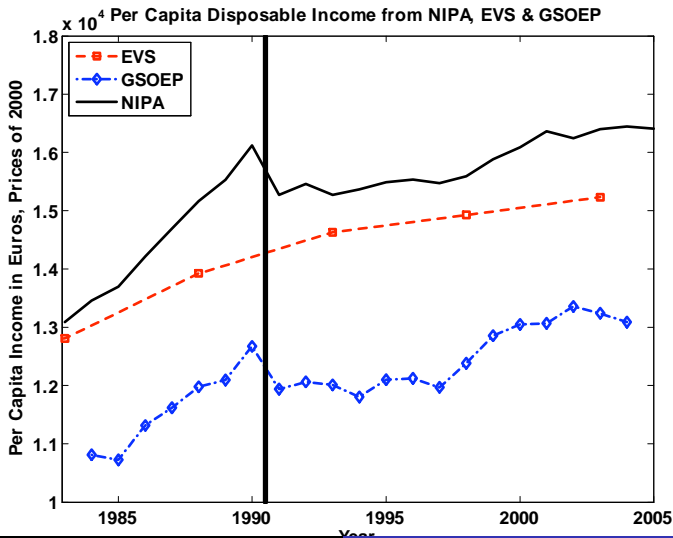
We Have A Serious Problem



CE vs NIPA for Canada



CE vs NIPA for Germany



CE vs NIPA for Italy

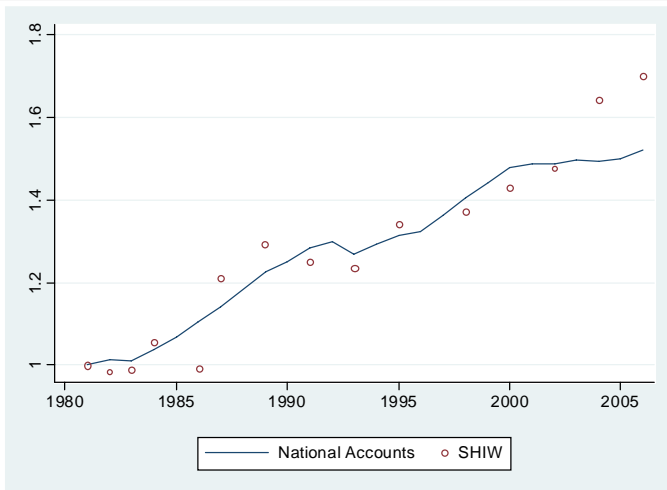
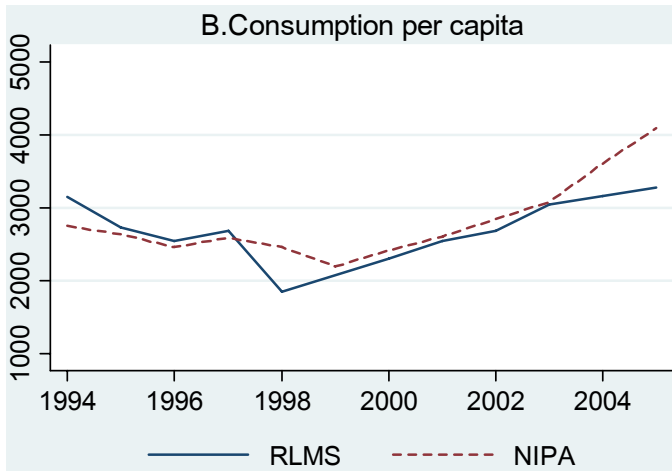
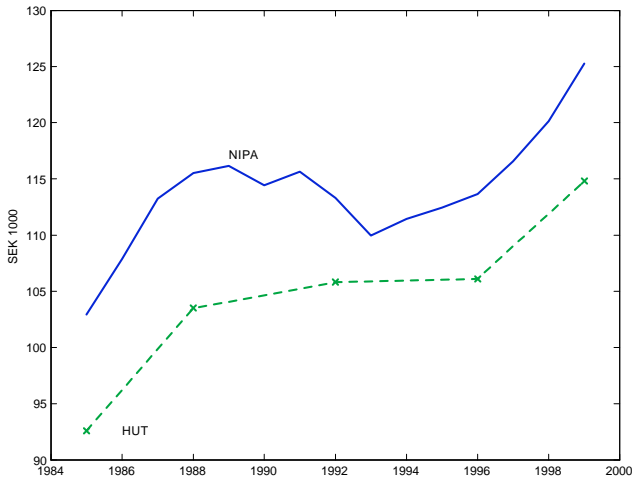


Figure 1: Average per-capita total consumption in the SHIW and in the National Accounts

CE vs NIPA for Russia

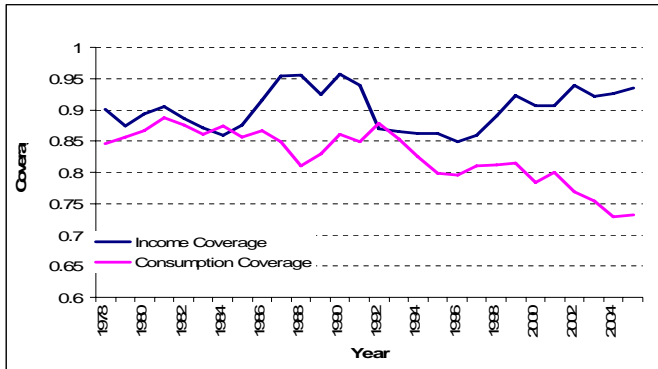


CE vs NIPA for Sweden



Note: The figure shows mean consumption per capita in current prices. NIPA data are household consumption expenditure, excluding non-profit organizations, based on national accounts data

CE vs NIPA for UK



Commonalities

- In Many Countries, Coverage Has Declined Seriously
- In Some, Deterioration Is Accelerating

Commonalities

- In Many Countries, Coverage Has Declined Seriously
- In Some, Deterioration Is Accelerating

Differences:

- In Person Vs Phone Interviews
- Diary Vs Recall
- Incentives To Participate
- Quality of Interviewers
- Quality of Survey (Focus Groups!)
- Use Of Budget Constraint

Differences:

- In Person Vs Phone Interviews
- Diary Vs Recall
- Incentives To Participate
- Quality of Interviewers
- Quality of Survey (Focus Groups!)
- Use Of Budget Constraint

Differences:

- In Person Vs Phone Interviews
- Diary Vs Recall
- Incentives To Participate
- Quality of Interviewers
- Quality of Survey (Focus Groups!)
- Use Of Budget Constraint

Differences:

- In Person Vs Phone Interviews
- Diary Vs Recall
- Incentives To Participate
- Quality of Interviewers
- Quality of Survey (Focus Groups!)
- Use Of Budget Constraint

Differences:

- In Person Vs Phone Interviews
- Diary Vs Recall
- Incentives To Participate
- Quality of Interviewers
- Quality of Survey (Focus Groups!)
- Use Of Budget Constraint

Differences:

- In Person Vs Phone Interviews
- Diary Vs Recall
- Incentives To Participate
- Quality of Interviewers
- Quality of Survey (Focus Groups!)
- Use Of Budget Constraint

Differences:

- In Person Vs Phone Interviews
- Diary Vs Recall
- Incentives To Participate
- Quality of Interviewers
- Quality of Survey (Focus Groups!)
- Use Of Budget Constraint

- **Biggest Problem: Increased Reluctance to Participate**
- Differential Sample Selection: Richer \Rightarrow Less Willing
- Second Biggest: Changes In Technology (Automated Payment, Etc)
 - If You Asked Me These Questions, I'd Have No Idea!
- I'm Concerned You're Drilling A Drying Up Hole

- Biggest Problem: Increased Reluctance to Participate
- Differential Sample Selection: Richer \Rightarrow Less Willing
- Second Biggest: Changes In Technology (Automated Payment, Etc)
 - If You Asked Me These Questions, I'd Have No Idea!
- I'm Concerned You're Drilling A Drying Up Hole

- Biggest Problem: Increased Reluctance to Participate
- Differential Sample Selection: Richer \Rightarrow Less Willing
- Second Biggest: Changes In Technology (Automated Payment, Etc)
 - If You Asked Me These Questions, I'd Have No Idea!
- I'm Concerned You're Drilling A Drying Up Hole

- Biggest Problem: Increased Reluctance to Participate
- Differential Sample Selection: Richer \Rightarrow Less Willing
- Second Biggest: Changes In Technology (Automated Payment, Etc)
 - If You Asked Me These Questions, I'd Have No Idea!
- I'm Concerned You're Drilling A Drying Up Hole

- Biggest Problem: Increased Reluctance to Participate
- Differential Sample Selection: Richer \Rightarrow Less Willing
- Second Biggest: Changes In Technology (Automated Payment, Etc)
 - If You Asked Me These Questions, I'd Have No Idea!
- I'm Concerned You're Drilling A Drying Up Hole

- Nielsen Data
- Credit Card Data
- Personal Finance Online
 - QuickenOnline
 - iBank
 - <http://www.fidelity.com/products/stocks/fintrading>
 - Big Advantage: People Get Something Valuable At the End

50 percent chance that current structure should be ditched altogether

- Nielsen Data
- Credit Card Data
- Personal Finance Online
 - QuickenOnline
 - iBank
 - <http://www.mint.com/product/videos/mint-demo/>
 - Big Advantage: People Get Something Valuable At the End

50 percent chance that current structure should be ditched altogether

- Nielsen Data
- Credit Card Data
- Personal Finance Online
 - QuickenOnline
 - iBank
 - <http://www.mint.com/product/videos/mint-demo/>
 - Big Advantage: People Get Something Valuable At the End

50 percent chance that current structure should be ditched altogether

- Nielsen Data
- Credit Card Data
- Personal Finance Online
 - QuickenOnline
 - iBank
 - <http://www.mint.com/product/videos/mint-demo/>
 - Big Advantage: People Get Something Valuable At the End

50 percent chance that current structure should be ditched altogether

- Nielsen Data
- Credit Card Data
- Personal Finance Online
 - QuickenOnline
 - iBank
 - <http://www.mint.com/product/videos/mint-demo/>
 - Big Advantage: People Get Something Valuable At the End

50 percent chance that current structure should be ditched altogether

- Nielsen Data
- Credit Card Data
- Personal Finance Online
 - QuickenOnline
 - iBank
 - <http://www.mint.com/product/videos/mint-demo/>
 - Big Advantage: People Get Something Valuable At the End

50 percent chance that current structure should be ditched altogether

- Nielsen Data
- Credit Card Data
- Personal Finance Online
 - QuickenOnline
 - iBank
 - <http://www.mint.com/product/videos/mint-demo/>
 - Big Advantage: People Get Something Valuable At the End

50 percent chance that current structure should be ditched altogether

- Nielsen Data
- Credit Card Data
- Personal Finance Online
 - QuickenOnline
 - iBank
 - <http://www.mint.com/product/videos/mint-demo/>
 - Big Advantage: People Get Something Valuable At the End

50 percent chance that current structure should be ditched altogether

- Nielsen Data
- Credit Card Data
- Personal Finance Online
 - QuickenOnline
 - iBank
 - <http://www.mint.com/product/videos/mint-demo/>
 - Big Advantage: People Get Something Valuable At the End

50 percent chance that current structure should be ditched altogether

- Nielsen Data
- Credit Card Data
- Personal Finance Online
 - QuickenOnline
 - iBank
 - <http://www.mint.com/product/videos/mint-demo/>
 - Big Advantage: People Get Something Valuable At the End

50 percent chance that current structure should be ditched altogether

- Comparison of CEX Data With Other Sources Should Be *Routinized*
- Every CE Report Should Show Comparisons With Other Sources, Say:
 - WPA
 - Wilson
 - CEA
- Biannual Review Report Should Contain Broader Comparisons
 - SCE, Labor Market, SUI Tax Income, and Top 100 Firms
 - Explain What It Should/Should Not Be Used For
- Occasional *External* Reviews, Not Just Internal

- Comparison of CEX Data With Other Sources Should Be *Routinized*
- Every CE Report Should Show Comparisons With Other Sources, Say:
 - WPA
 - Wilson
 - CEA
- Biannual Review Report Should Contain Broader Comparisons
 - SCE, Labor Market, SUI Tax Income, and Top 100 Firms
 - Explain What It Should/Should Not Be Used For
- Occasional *External* Reviews, Not Just Internal

- Comparison of CEX Data With Other Sources Should Be *Routinized*
- *Every CE Report Should Show Comparisons With Other Sources, Say:*
 - NIPA
 - Nielsen
 - CPS
- Biannual Review Report Should Contain Broader Comparisons
 - SCF, Labor Market, SOI Tax Income, and "special topics"
 - Explain What It Should/Should Not Be Used For
- Occasional *External* Reviews, Not Just Internal

- Comparison of CEX Data With Other Sources Should Be *Routinized*
- *Every* CE Report Should Show Comparisons With Other Sources, Say:
 - NIPA
 - Nielsen
 - CPS
- Biannual Review Report Should Contain Broader Comparisons
 - SCF, Labor Market, SOI Tax Income, and "special topics"
 - Explain What It Should/Should Not Be Used For
- Occasional *External* Reviews, Not Just Internal

- Comparison of CEX Data With Other Sources Should Be *Routinized*
- *Every* CE Report Should Show Comparisons With Other Sources, Say:
 - NIPA
 - Nielsen
 - CPS
- Biannual Review Report Should Contain Broader Comparisons
 - SCF, Labor Market, SOI Tax Income, and "special topics"
 - Explain What It Should/Should Not Be Used For
- Occasional *External* Reviews, Not Just Internal

- Comparison of CEX Data With Other Sources Should Be *Routinized*
- *Every* CE Report Should Show Comparisons With Other Sources, Say:
 - NIPA
 - Nielsen
 - CPS
- Biannual Review Report Should Contain Broader Comparisons
 - SCF, Labor Market, SOI Tax Income, and "special topics"
 - Explain What It Should/Should Not Be Used For
- Occasional *External* Reviews, Not Just Internal

- Comparison of CEX Data With Other Sources Should Be *Routinized*
- *Every* CE Report Should Show Comparisons With Other Sources, Say:
 - NIPA
 - Nielsen
 - CPS
- Biannual Review Report Should Contain Broader Comparisons
 - SCF, Labor Market, SOI Tax Income, and "special topics"
 - Explain What It Should/Should Not Be Used For
- Occasional *External* Reviews, Not Just Internal

- Comparison of CEX Data With Other Sources Should Be *Routinized*
- *Every* CE Report Should Show Comparisons With Other Sources, Say:
 - NIPA
 - Nielsen
 - CPS
- Biannual Review Report Should Contain Broader Comparisons
 - SCF, Labor Market, SOI Tax Income, and “special topics”
 - Explain What It Should/Should Not Be Used For
- Occasional *External* Reviews, Not Just Internal

- Comparison of CEX Data With Other Sources Should Be *Routinized*
- *Every* CE Report Should Show Comparisons With Other Sources, Say:
 - NIPA
 - Nielsen
 - CPS
- Biannual Review Report Should Contain Broader Comparisons
 - SCF, Labor Market, SOI Tax Income, and “special topics”
 - Explain What It Should/Should Not Be Used For
- Occasional *External* Reviews, Not Just Internal

- Comparison of CEX Data With Other Sources Should Be *Routinized*
- *Every* CE Report Should Show Comparisons With Other Sources, Say:
 - NIPA
 - Nielsen
 - CPS
- Biannual Review Report Should Contain Broader Comparisons
 - SCF, Labor Market, SOI Tax Income, and “special topics”
 - Explain What It Should/Should Not Be Used For
- Occasional *External* Reviews, Not Just Internal

- Comparison of CEX Data With Other Sources Should Be *Routinized*
- *Every* CE Report Should Show Comparisons With Other Sources, Say:
 - NIPA
 - Nielsen
 - CPS
- Biannual Review Report Should Contain Broader Comparisons
 - SCF, Labor Market, SOI Tax Income, and “special topics”
 - Explain What It Should/Should Not Be Used For
- Occasional *External* Reviews, Not Just Internal

Openness, Transparency, Accountability

How Do These Buzzwords Apply?

- Unfolding Brackets of Complexity Of Data Use
- Very Easy To Get Top Level Data
- Clear Path to “Drill Down” to Deeper and Deeper Levels
- A Lot Of Researchers Have Been Deterred by Complexity
- Experiment, e.g., With HRS or PSID Instrument On CE Sample

Openness, Transparency, Accountability

How Do These Buzzwords Apply?

- **Unfolding Brackets of Complexity Of Data Use**
- Very Easy To Get Top Level Data
- Clear Path to “Drill Down” to Deeper and Deeper Levels
 - A Lot Of Researchers Have Been Defeated By Complexity
- Experiment, e.g., With HRS or PSID Instrument On CE Sample

Openness, Transparency, Accountability

How Do These Buzzwords Apply?

- **Unfolding Brackets of Complexity Of Data Use**
- **Very Easy To Get Top Level Data**
- Clear Path to “Drill Down” to Deeper and Deeper Levels
 - A Lot Of Researchers Have Been Defeated By Complexity
- Experiment, e.g., With HRS or PSID Instrument On CE Sample

Openness, Transparency, Accountability

How Do These Buzzwords Apply?

- Unfolding Brackets of Complexity Of Data Use
- Very Easy To Get Top Level Data
- Clear Path to “Drill Down” to Deeper and Deeper Levels
 - A Lot Of Researchers Have Been Defeated By Complexity
- Experiment, e.g., With HRS or PSID Instrument On CE Sample

Openness, Transparency, Accountability

How Do These Buzzwords Apply?

- Unfolding Brackets of Complexity Of Data Use
- Very Easy To Get Top Level Data
- Clear Path to “Drill Down” to Deeper and Deeper Levels
 - A Lot Of Researchers Have Been Defeated By Complexity
- Experiment, e.g., With HRS or PSID Instrument On CE Sample

Openness, Transparency, Accountability

How Do These Buzzwords Apply?

- Unfolding Brackets of Complexity Of Data Use
- Very Easy To Get Top Level Data
- Clear Path to “Drill Down” to Deeper and Deeper Levels
 - A Lot Of Researchers Have Been Defeated By Complexity
- Experiment, e.g., With HRS or PSID Instrument On CE Sample

- Encourage Researchers With Setup Like Census Data Centers

A Golden Age!

- CE Should Be A Part Of It, Not A Drowning Polar Bear