

MOUNTAIN-PLAINS INFORMATION OFFICE
Kansas City, Mo.

For release: Tuesday, April 10, 2012

12-682-KAN

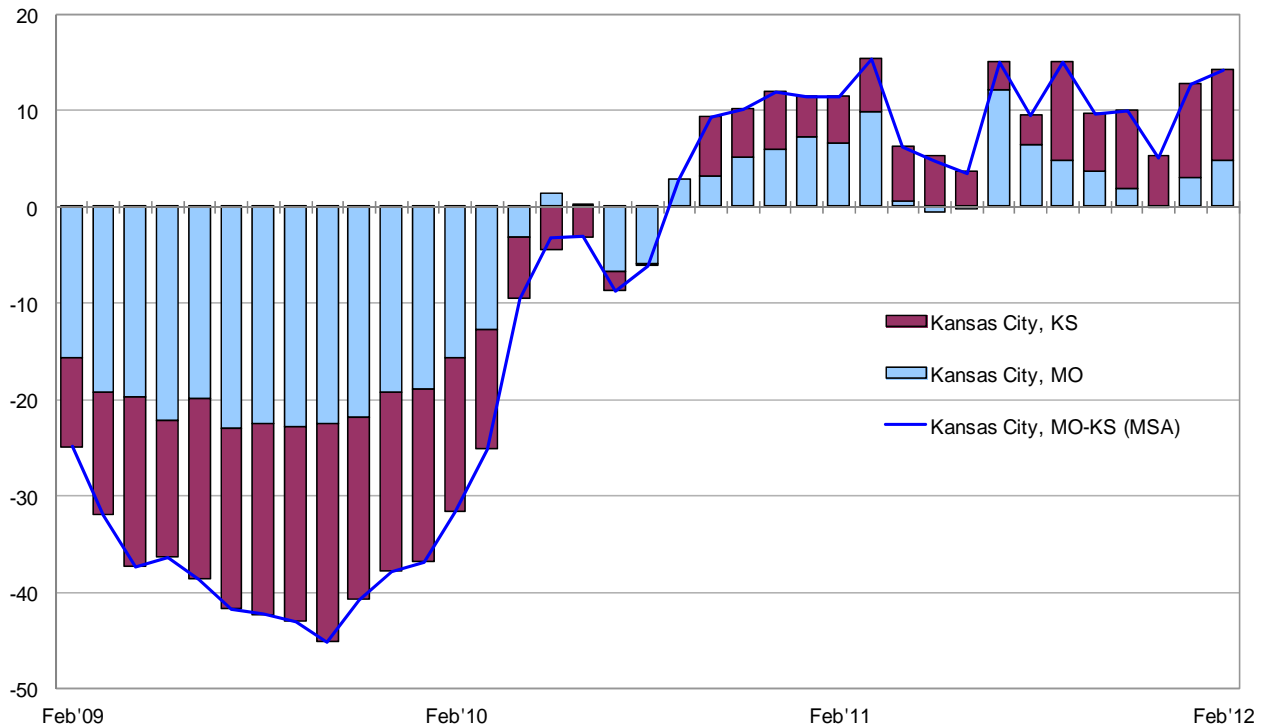
Technical information : (816) 285-7000 • BLSInfoKansasCity@bls.gov • www.bls.gov/ro7
Media contact : (816) 285-7000 • BLSInfoKansasCity@bls.gov

KANSAS CITY AREA EMPLOYMENT – FEBRUARY 2012

Total nonfarm employment for the Kansas City, Mo.-Ks., Metropolitan Statistical Area (MSA) stood at 973,300 in February 2012, the U.S. Bureau of Labor Statistics reported today, up 14,200 over the year. Regional Commissioner Stanley W. Suchman noted that Kansas City’s rate of employment growth, 1.5 percent, was similar to the 1.6 percent for the nation over the 12-month period.

Chart 1. Over-the-year net change in total nonfarm employment in the Kansas City metropolitan area and its components, February 2009–February 2012

Net change (in thousands)



Source: U.S. Bureau of Labor Statistics

The Kansas City metropolitan area is comprised of two separately identifiable employment centers—the Missouri portion and the Kansas portion of the MSA. The Missouri portion, which had 56 percent of the area’s workforce, added 4,800 jobs (0.9 percent) over the year. The Kansas portion, with 44 percent of the area’s workforce, gained 9,400 jobs (2.2 percent) and accounted for about two-thirds of the MSA’s employment growth. (See chart 1 and table 1; Technical Note at end of release contains metropolitan area definitions. Data in this release are not seasonally adjusted; accordingly, analysis is based on over-the-year comparisons.)

In the Kansas City metropolitan area, professional and business services experienced the largest increase in employment, adding 6,500 jobs from February 2011 to February 2012. The Kansas portion of the MSA gained 4,900 jobs in professional and business services, more than three times the number of jobs added in the Missouri portion (1,600). This supersector’s rate of job growth of 4.4 percent in the metropolitan area outpaced the respective national gain of 3.7 percent.

Leisure and hospitality registered the second largest expansion of employment in the Kansas City area, up 4,700 from February a year ago. The job growth for this supersector was led by the Kansas side of the MSA with the addition of 2,900 jobs. Manufacturing employment rose by 3,000 over the year, as the Kansas portion added 1,800 manufacturing jobs and the Missouri portion gained 1,200. The Kansas City area’s rates of job growth in both of these supersectors were at least twice the respective national rates. Leisure and hospitality employment grew 5.4 percent in Kansas City compared to 2.7 percent for the nation; local manufacturing employment was 4.1 percent higher while the national growth rate was 2.0 percent.

Two additional supersectors expanded by over 1,000 jobs from February 2011. Education and health services gained 1,700 jobs. Job growth for this supersector was heavily concentrated on the Missouri side of the MSA with the addition of 1,400 jobs. Employment in trade, transportation, and utilities rose by 1,200 as the Missouri portion of the area added 1,000 jobs over the year. Nationally, employment in education and health services (2.4 percent) and trade, transportation, and utilities (1.5 percent) grew at a faster pace than it did locally (1.3 and 0.6 percent, respectively).

Over the year, two supersectors in the Kansas City metropolitan area registered declines of more than 1,000 jobs. The information and government supersectors each shed 1,200 jobs with the losses for each supersector equally distributed between the two portions of the area. The local rate of job loss in information (-4.2 percent) far outpaced the national rate of -1.7 percent. However, the decline in government employment locally (-0.8 percent) was similar to the national rate (-0.9 percent).

Changes to Current Employment Statistics Data

Effective with the release of January 2012 data, nonfarm payroll estimates for all states, metropolitan areas, and metropolitan divisions have been revised to reflect 2011 benchmark levels. Not seasonally adjusted data for these series were revised back to April 2010. For more information on benchmark procedures, see www.bls.gov/sae/benchmark2012.pdf.

Technical Note

This release presents nonfarm payroll employment estimates from the Current Employment Statistics (CES) program. The CES survey is a Federal-State cooperative endeavor between State employment security agencies and the Bureau of Labor Statistics.

Definitions. Employment data refer to persons on establishment payrolls who receive pay for any part of the pay period which includes the 12th of the month. Persons are counted at their place of work rather than at their place of residence; those appearing on more than one payroll are counted on each payroll. Industries are classified on the basis of their principal activity in accordance with the 2007 version of the North American Industry Classification System.

Method of estimation. The employment data are estimated using a "link relative" technique in which a ratio (link relative) of current-month employment to that of the previous month is computed from a sample of establishments reporting for both months. The estimates of employment for the current month are obtained by multiplying the estimates for the previous month by these ratios. Small-domain models are used as the official estimators for approximately 39 percent of CES published series which have insufficient sample for direct sample-based estimates.

Annual revisions. Employment estimates are adjusted annually to a complete count of jobs, called benchmarks, derived principally from tax reports which are submitted by employers who are covered under state unemployment insurance (UI) laws. The benchmark information is used to adjust the monthly estimates between the new benchmark and the preceding one and also to establish the level of employment for the new benchmark month. Thus, the benchmarking process establishes the level of employment, and the sample is used to measure the month-to-month changes in the level for the subsequent months.

Reliability of the estimates. The estimates presented in this release are based on sample survey, administrative data, and modeling and, thus, are subject to sampling and other types of errors. Sampling error is a measure of sampling variability--that is, variation that occurs by chance because a sample rather than the entire population is surveyed. Survey data are also subject to nonsampling errors, such as those which can be introduced into the data collection and processing operations. Estimates not directly derived from sample surveys are subject to additional errors resulting from the special estimation processes used. The sums of individual items may not always equal the totals shown in the same tables because of rounding.

Employment estimates. Measures of sampling error for state CES data at the supersector level are available on the BLS Web site at www.bls.gov/sae/790stderr.htm. Information on recent benchmark revisions for states is available at www.bls.gov/sae/.

Area definitions. The substate area data published in this release reflect the standards and definitions established by the U.S. Office of Management and Budget, dated November 20, 2008. A detailed list of the geographic definitions is available at www.bls.gov/lau/lausmsa.htm.

The Kansas City, Mo.-Ks. Metropolitan Statistical Area (MSA) includes Bates, Caldwell, Cass, Clay, Clinton, Jackson, Lafayette, Platte, and Ray Counties in Missouri; Franklin, Johnson, Leavenworth, Linn, Miami, and Wyandotte Counties in Kansas.

The Kansas City, Mo. portion includes Bates, Caldwell, Cass, Clay, Clinton, Jackson, Lafayette, Platte, and Ray Counties in Missouri.

The Kansas City, Ks. portion includes Franklin, Johnson, Leavenworth, Linn, Miami, and Wyandotte Counties in Kansas.

Additional information

More complete information on the technical procedures used to develop these estimates and additional data appear in *Employment and Earnings*, which is available on line at www.bls.gov/opub/ee/home.htm. Industry employment data for states and metropolitan areas from the Current Employment Statistics program are also available in the above mentioned news releases and from the Internet at www.bls.gov/sae/.

For personal assistance or further information on the Current Employment Statistics program, as well as other Bureau programs, contact the Mountain-Plains BLS information office at (816) 285-7000 from 9:00 a.m. to 12:00 p.m. and 1:00 p.m. to 4:00 p.m. CT.

Table 1. Employees on nonfarm payrolls by industry supersector, the United States and the Kansas City metropolitan area and its components, not seasonally adjusted (numbers in thousands)

Area and Industry	February 2011	December 2011	January 2012	February 2012 (P)	Change from Feb 2011 to Feb 2012	
					Number	Percent
United States						
Total nonfarm	129,148	132,965	130,313	131,164	2,016	1.6
Mining & Logging	723	818	813	817	94	13.0
Construction	5,049	5,441	5,160	5,119	70	1.4
Manufacturing	11,542	11,817	11,755	11,777	235	2.0
Trade, Transportation, & Utilities	24,473	25,803	25,043	24,840	367	1.5
Information	2,663	2,660	2,600	2,617	-46	-1.7
Financial Activities	7,624	7,707	7,647	7,656	32	0.4
Professional & Business Services	16,842	17,698	17,313	17,461	619	3.7
Education & Health Services	19,829	20,236	19,985	20,304	475	2.4
Leisure & Hospitality	12,614	13,116	12,826	12,954	340	2.7
Other Services	5,284	5,336	5,294	5,309	25	0.5
Government	22,505	22,333	21,877	22,310	-195	-0.9
Kansas City, Mo.-Ks. Metropolitan Statistical Area (MSA)						
Total nonfarm	959.1	987.8	968.8	973.3	14.2	1.5
Mining, Logging, & Construction	32.7	34.5	33.2	32.5	-0.2	-0.6
Manufacturing	72.3	76.2	75.0	75.3	3.0	4.1
Trade, Transportation, & Utilities	192.8	200.6	196.1	194.0	1.2	0.6
Information	28.8	27.9	27.6	27.6	-1.2	-4.2
Financial Activities	70.7	70.2	70.3	70.4	-0.3	-0.4
Professional & Business Services	146.3	154.0	151.0	152.8	6.5	4.4
Education & Health Services	131.7	133.7	131.1	133.4	1.7	1.3
Leisure & Hospitality	87.6	94.4	92.1	92.3	4.7	5.4
Other Services	43.8	44.1	43.8	43.8	0.0	0.0
Government	152.4	152.2	148.6	151.2	-1.2	-0.8
Kansas City, Mo. portion						
Total nonfarm	539.4	551.1	540.2	544.2	4.8	0.9
Mining, Logging, & Construction	18.8	19.7	18.6	18.5	-0.3	-1.6
Manufacturing	38.9	40.7	40.1	40.1	1.2	3.1
Trade, Transportation, & Utilities	101.9	106.2	104.1	102.9	1.0	1.0
Information	14.6	14.2	14.0	14.0	-0.6	-4.1
Financial Activities	39.1	38.7	38.4	38.5	-0.6	-1.5
Professional & Business Services	76.4	77.9	76.8	78.0	1.6	2.1
Education & Health Services	73.6	74.3	73.0	75.0	1.4	1.9
Leisure & Hospitality	54.7	57.8	55.9	56.5	1.8	3.3
Other Services	27.8	28.0	27.7	27.7	-0.1	-0.4
Government	93.6	93.6	91.6	93.0	-0.6	-0.6
Kansas City, Ks. portion						
Total nonfarm	419.7	436.7	428.6	429.1	9.4	2.2
Mining, Logging, & Construction	13.9	14.8	14.6	14.0	0.1	0.7
Manufacturing	33.4	35.5	34.9	35.2	1.8	5.4
Trade, Transportation, & Utilities	90.9	94.4	92.0	91.1	0.2	0.2
Information	14.2	13.7	13.6	13.6	-0.6	-4.2
Financial Activities	31.6	31.5	31.9	31.9	0.3	0.9
Professional & Business Services	69.9	76.1	74.2	74.8	4.9	7.0
Education & Health Services	58.1	59.4	58.1	58.4	0.3	0.5
Leisure & Hospitality	32.9	36.6	36.2	35.8	2.9	8.8
Other Services	16.0	16.1	16.1	16.1	0.1	0.6
Government	58.8	58.6	57.0	58.2	-0.6	-1.0

(P) Data are preliminary.