

MIDWEST INFORMATION OFFICE  
Chicago, Ill.

For release: 7:30 a.m. CT, Tuesday, May 15, 2012

12-959-CHI

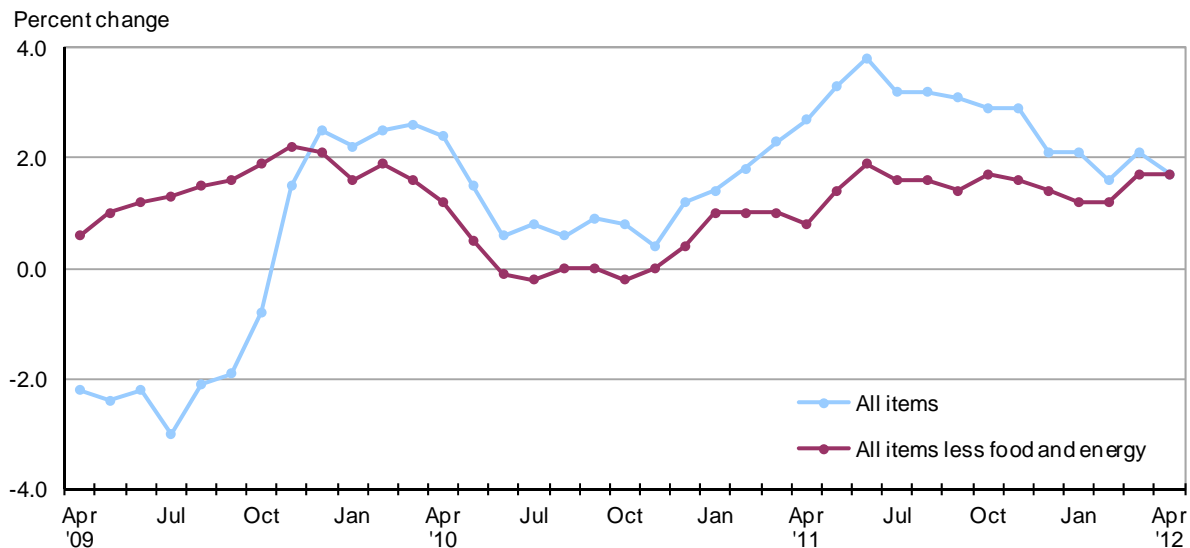
Technical information: (312) 353-1880 • BLSInfoChicago@bls.gov • www.bls.gov/ro5  
Media contact: (312) 353-1138

**CONSUMER PRICE INDEX, CHICAGO-GARY-KENOSHA,  
ILL.-IND.-WIS., CMSA – APRIL 2012**

The Consumer Price Index for All Urban Consumers (CPI-U) in the Chicago-Gary-Kenosha area was unchanged in April, the U.S. Bureau of Labor Statistics reported today. Regional Commissioner Charlene Peiffer noted that food prices increased 0.6 percent and energy prices rose 0.5 percent while the all items less food and energy category edged down 0.1 percent over the month. Among the indexes within the all items less food and energy category, prices were lower for apparel and shelter. (Data in this report are not seasonally adjusted. Accordingly, month-to-month changes may reflect the impact of seasonal influences.)

Over the last 12 months, the Chicago area all items CPI-U increased 1.7 percent. The energy index declined 0.7 percent since last April, primarily due to falling utility (piped) gas service prices. The all items less food and energy index was 1.7 percent higher over the year.

**Chart 1. Over-the-year percent change in CPI-U, Chicago-Gary-Kenosha, April 2009–April 2012**



Source: U.S. Bureau of Labor Statistics

**Food**

Food prices were 0.6 percent higher in April after a 0.2-percent increase in March. Of the two components within the food index, food at home prices were up 0.5 percent and food away from home prices rose 0.9 percent over the month. Within the food at home group, prices were higher for cakes, cupcakes, and cookies; processed fish and seafood; and potatoes. In contrast, prices were lower for snacks, bananas, and butter and margarine.

From April 2011 to April 2012, the food index increased 2.6 percent. In the previous 12-month period ended April 2011, food prices in the Chicago area were up 3.7 percent.

**Energy**

The energy index increased 0.5 percent in April after rising 8.5 percent in March. Within the energy category, prices for gasoline increased 2.4 percent. Prices for utility (piped) gas service decreased 7.1 percent and electricity prices were unchanged over the month.

Prices for gasoline rose 5.3 percent and electricity prices were 1.1 percent higher over the year. Utility (piped) gas service costs fell 24.2 percent, the largest over-the-year decrease in this category since December 2009. Overall energy prices declined 0.7 percent for the 12 months ended in April 2012.

**All items less food and energy**

The index for all items less food and energy was down a slight 0.1 percent in April. Among the index’s components, prices were lower for apparel (-2.4 percent) and shelter (-0.3 percent) in contrast to rising prices for airline fares and used cars and trucks.

Over the year, the index for all items less food and energy increased 1.7 percent. Shelter was the largest contributor, rising 1.8 percent from April 2011 to April 2012.

**The May 2012 Consumer Price Index for Chicago is scheduled to be released on June 14, 2012, at 7:30 a.m. (CT).**

**Table A. Percent Changes in the CPI-U, Chicago-Gary-Kenosha, Ill.-Ind.-Wis. (not seasonally adjusted)**

Expenditure Category	Percent changes from preceding month							12 mo. ended Apr. '12
	2011			2012				
	Oct.	Nov.	Dec.	Jan.	Feb.	Mar.	Apr.	
All items	-0.2	-0.2	-0.5	0.6	0.0	1.2	0.0	1.7
Food & beverages	.1	-.1	-.2	.8	-.6	.2	.5	2.3
Food	.1	-.1	-.2	.8	-.7	.2	.6	2.6
Housing	.1	-.1	.1	.2	-.2	.3	-.5	.9
Apparel	3.1	-3.0	-4.9	.9	3.1	3.2	-2.4	3.9
Transportation	-2.7	-.1	-1.4	2.1	.3	4.5	1.4	3.7
Medical care	1.2	.1	.2	.9	.5	.5	-.1	2.7
Recreation	-.3	-.1	-.3	1.2	.1	2.7	-.3	-1.6
Education & communication	.3	.0	-.2	-.6	.2	-.1	.2	.8
Other goods & services	-.8	.8	.3	-.7	-.4	1.1	-.4	.2
Special Indexes								
Energy	-6.2	-.8	-2.8	3.1	-1.5	8.5	.5	-.7
All items less food & energy	.5	-.1	-.2	.3	.3	.6	-.1	1.7

## Technical Note

The Consumer Price Index (CPI) is a measure of the average change in prices over time in a fixed market basket of goods and services. The Bureau of Labor Statistics publishes CPIs for two population groups: (1) a CPI for All Urban Consumers (CPI-U) which covers approximately 88 percent of the total population and (2) a CPI for Urban Wage Earners and Clerical Workers (CPI-W) which covers 29 percent of the total population. The CPI-U includes, in addition to wage earners and clerical workers, groups such as professional, managerial, and technical workers, the self-employed, short-term workers, the unemployed, and retirees and others not in the labor force.

The CPI is based on prices of food, clothing, shelter, and fuels, transportation fares, charges for doctors' and dentists' services, drugs, and the other goods and services that people buy for day-to-day living. Each month, prices are collected in 87 urban areas across the country from about 4,000 housing units and approximately 26,000 retail establishments--department stores, supermarkets, hospitals, filling stations, and other types of stores and service establishments. All taxes directly associated with the purchase and use of items are included in the index.

The index measures price changes from a designated reference date (1982-84) that equals 100.0. An increase of 16.5 percent, for example, is shown as 116.5. This change can also be expressed in dollars as follows: the price of a base period "market basket" of goods and services in the CPI has risen from \$10 in 1982-84 to \$11.65. For further details see the CPI home page on the Internet at [www.bls.gov/cpi](http://www.bls.gov/cpi) and the BLS Handbook of Methods, Chapter 17 The Consumer Price Index, available on the Internet at [www.bls.gov/opub/hom/homch17\\_a.htm](http://www.bls.gov/opub/hom/homch17_a.htm).

In calculating the index, price changes for the various items in each location are averaged together with weights that represent their importance in the spending of the appropriate population group. Local data are then combined to obtain a U.S. city average. Because the sample size of a local area is smaller, the local area index is subject to substantially more sampling and other measurement error than the national index. In addition, local indexes are not adjusted for seasonal influences. As a result, local area indexes show greater volatility than the national index, although their long-term trends are quite similar. **NOTE: Area indexes do not measure differences in the level of prices between cities; they only measure the average change in prices for each area since the base period.**

The Chicago-Gary-Kenosha, Ill.-Ind.-Wis. consolidated area covered in this release is comprised of Cook, DeKalb, DuPage, Grundy, Kane, Kankakee, Kendall, Lake, McHenry, and Will Counties in Illinois; Lake and Porter Counties in Indiana; and Kenosha County in Wisconsin.

Information in this release will be made available to sensory impaired individuals upon request. Voice phone: 202-691-5200; TDD message referral phone number: 1-800-877-8339.

For personal assistance or further information on Consumer Price Indexes, as well as other Bureau products, contact the Midwest Information Office at (312) 353-1880 from 8:00 a.m. to 4:00 p.m. CT.

Consumer Price Index for All Urban Consumers (CPI-U): Indexes and percent changes for selected periods

Chicago-Gary-Kenosha, IL-IN-WI (1982-84=100 unless otherwise noted)

Item and Group	Indexes			Percent change from—		
	Feb. 2012	Mar. 2012	Apr. 2012	Apr. 2011	Feb. 2012	Mar. 2012
<b>Expenditure category</b>						
All items .....	219.626	222.351	222.416	1.7	1.3	0.0
All items (1967=100) .....	656.151	664.294	664.487	-	-	-
Food and beverages .....	225.868	226.335	227.578	2.3	.8	.5
Food .....	224.903	225.371	226.782	2.6	.8	.6
Food at home .....	227.669	228.163	229.235	2.4	.7	.5
Food away from home .....	215.032	215.444	217.386	2.7	1.1	.9
Alcoholic beverages .....	237.470	237.922	235.964	-.7	-.6	-.8
Housing .....	217.462	218.046	217.031	.9	-.2	-.5
Shelter .....	268.285	269.400	268.710	1.8	.2	-.3
Rent of primary residence <sup>1</sup> .....	280.126	280.497	280.203	1.8	.0	-.1
Owners' equivalent rent of residences <sup>1 2</sup> .....	274.349	275.115	274.617	1.9	.1	-.2
Owners' equivalent rent of primary residence <sup>1 2</sup> .....	274.349	275.115	274.617	1.9	.1	-.2
Fuels and utilities .....	176.034	175.041	171.887	-5.4	-2.4	-1.8
Household energy .....	149.268	148.019	144.105	-9.6	-3.5	-2.6
Energy services <sup>1</sup> .....	151.789	150.447	146.361	-9.9	-3.6	-2.7
Electricity <sup>1</sup> .....	155.546	155.359	155.356	1.1	-.1	.0
Utility (piped) gas service <sup>1</sup> .....	133.046	130.259	121.011	-24.2	-9.0	-7.1
Household furnishings and operations .....	100.905	100.946	100.319	1.1	-.6	-.6
Apparel .....	93.423	96.392	94.108	3.9	.7	-2.4
Transportation .....	199.386	208.344	211.232	3.7	5.9	1.4
Private transportation .....	196.738	206.286	208.767	3.9	6.1	1.2
Motor fuel .....	314.357	361.504	369.957	5.5	17.7	2.3
Gasoline (all types) .....	311.354	358.779	367.276	5.3	18.0	2.4
Gasoline, unleaded regular <sup>3</sup> .....	308.363	356.107	364.020	5.7	18.0	2.2
Gasoline, unleaded midgrade <sup>3 4</sup> .....	321.407	368.680	378.347	4.5	17.7	2.6
Gasoline, unleaded premium <sup>3</sup> .....	293.146	335.465	345.150	4.4	17.7	2.9
Medical care .....	428.202	430.329	430.037	2.7	.4	-.1
Recreation <sup>5</sup> .....	107.312	110.240	109.953	-1.6	2.5	-.3
Education and communication <sup>5</sup> .....	137.814	137.668	137.911	.8	.1	.2
Other goods and services .....	351.980	355.843	354.312	.2	.7	-.4
<b>Commodity and service group</b>						
All items .....	219.626	222.351	222.416	1.7	1.3	.0
Commodities .....	171.699	175.840	176.235	2.3	2.6	.2
Commodities less food and beverages .....	142.280	147.699	147.737	2.4	3.8	.0
Nondurables less food and beverages .....	189.188	200.999	200.703	3.7	6.1	-.1
Durables .....	97.401	97.334	97.644	.7	.2	.3
Services .....	264.871	266.176	265.915	1.3	.4	-.1
<b>Special aggregate indexes</b>						
All items less medical care .....	210.651	213.382	213.459	1.6	1.3	.0
All items less shelter .....	203.546	206.888	207.231	1.6	1.8	.2
Commodities less food .....	146.170	151.564	151.563	2.3	3.7	.0
Nondurables .....	209.318	215.972	216.396	2.9	3.4	.2
Nondurables less food .....	193.120	204.568	204.199	3.5	5.7	-.2
Services less rent of shelter <sup>2</sup> .....	275.138	276.721	276.951	.6	.7	.1
Services less medical care services .....	252.678	253.924	253.532	1.0	.3	-.2
Energy .....	213.331	231.440	232.518	-.7	9.0	.5
All items less energy .....	221.874	223.054	223.016	1.9	.5	.0
All items less food and energy .....	222.125	223.441	223.136	1.7	.5	-.1

<sup>1</sup> This index series was calculated using a Laspeyres estimator. All other item stratum index series were calculated using a geometric means estimator.

<sup>2</sup> Index is on a December 1982=100 base.

<sup>3</sup> Special index based on a substantially smaller sample.

<sup>4</sup> Indexes on a December 1993=100 base.

<sup>5</sup> Indexes on a December 1997=100 base.

- Data not available.

NOTE: Index applies to a month as a whole, not to any specific date.