

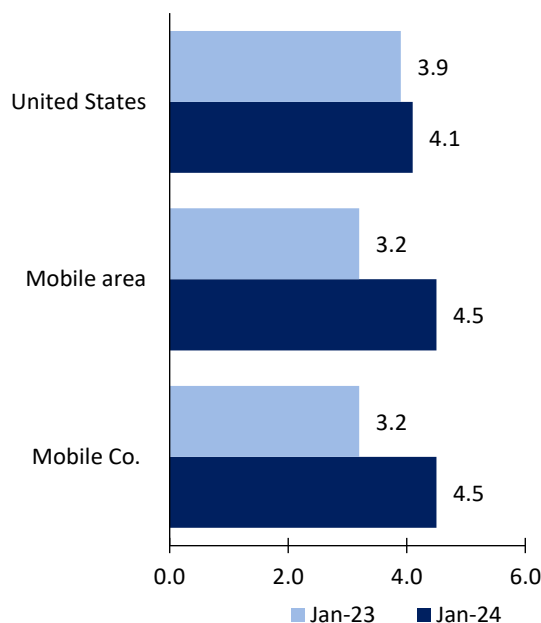
# Mobile, AL, Area Economic Summary

Updated March 19, 2024

This summary presents a sampling of economic information for the area; supplemental data are provided for regions and the nation. Subjects include **unemployment, employment, wages, prices, spending, and benefits**. All data are not seasonally adjusted and some may be subject to revision. Area definitions may differ by subject. For more area summaries and geographic definitions, see [www.bls.gov/regions/economic-summaries.htm](http://www.bls.gov/regions/economic-summaries.htm).

## Unemployment rates for the nation and selected areas

### Unemployment rates

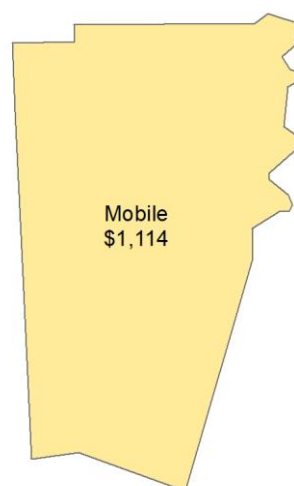


Source: U.S. BLS, Local Area Unemployment Statistics.

## Average weekly wages for all industries by county

### Mobile area, third quarter 2023

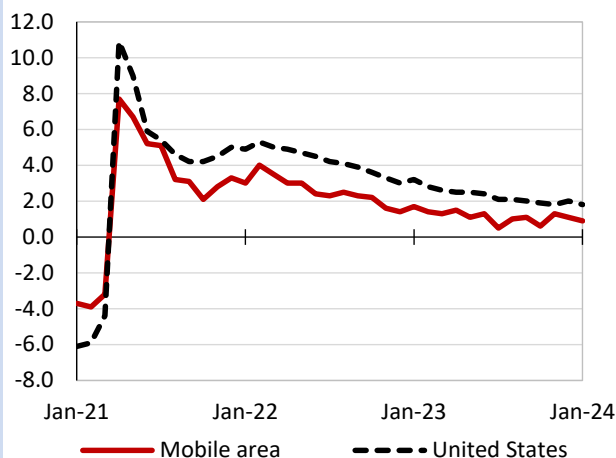
(U.S. = \$1,334; Area = \$1,114)



Source: U.S. BLS, Quarterly Census of Employment and Wages.

## Over-the-year changes in employment on nonfarm payrolls and employment by major industry sector

### 12-month percent changes in employment



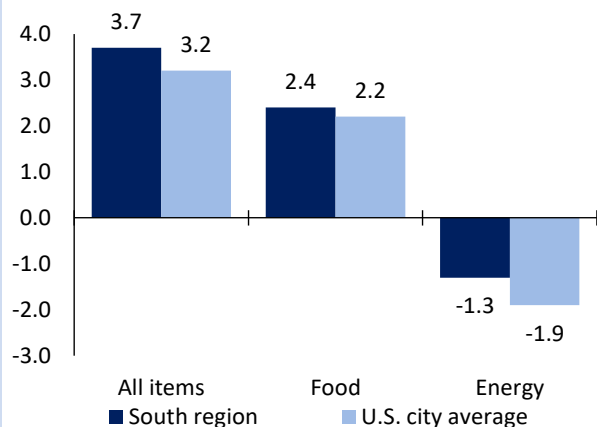
Source: U.S. BLS, Current Employment Statistics.

Mobile area employment (number in thousands)	Jan. 2024	Change from Jan. 2023 to Jan. 2024	
		Number	Percent
Total nonfarm	188.3	1.6	0.9
Mining, logging, and construction	12.9	0.8	6.6
Manufacturing	16.2	0.2	1.3
Trade, transportation, and utilities	39.7	0.2	0.5
Information	2.3	0.0	0.0
Financial activities	8.3	-1.2	-12.6
Professional and business services	23.6	0.3	1.3
Education and health services	30.8	1.4	4.8
Leisure and hospitality	16.6	-0.7	-4.0
Other services	12.2	0.1	0.8
Government	25.7	0.5	2.0

Source: U.S. BLS, Current Employment Statistics.

## Over-the-year change in the prices paid by urban consumers for selected categories

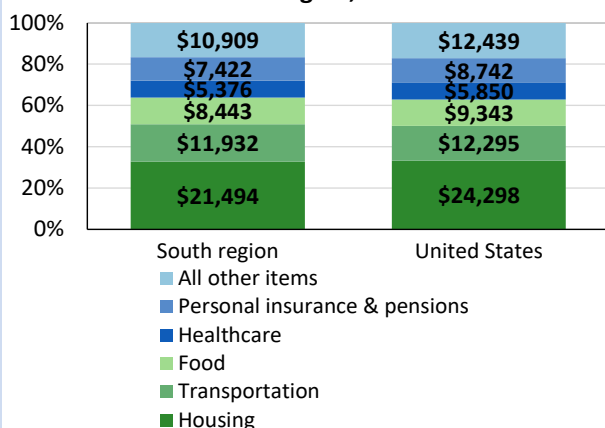
### 12-month percent change in CPI-U, February 2024



Source: U.S. BLS, Consumer Price Index.

## Average annual spending and percent distribution for selected categories

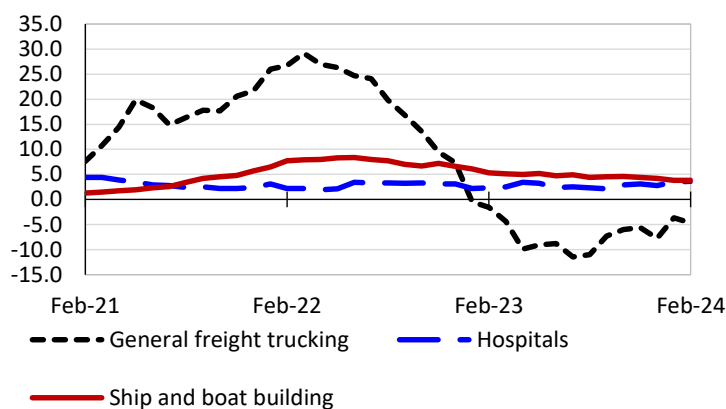
### Average annual expenditures, United States and South region, 2022



Source: U.S. BLS, Consumer Expenditure Survey.

## Over-the-year changes in the selling prices received by producers for selected industries nationwide

### 12-month percent changes in PPI



Source: U.S. BLS, Producer Price Index.

## Average hourly wages for selected occupations

Occupation	Mobile area	United States
All occupations	\$24.23	\$29.76
General and operations managers	56.43	59.07
Accountants and auditors	35.33	41.70
Registered nurses	31.41	42.80
Heavy and tractor-trailer truck drivers	23.85	25.52
Construction laborers	15.49	22.29
Retail salespersons	14.24	16.70

Source: U.S. BLS, Occupational Employment and Wage Statistics, May 2022.

## Employer costs per hour worked for wages and selected employee benefits by geographic division

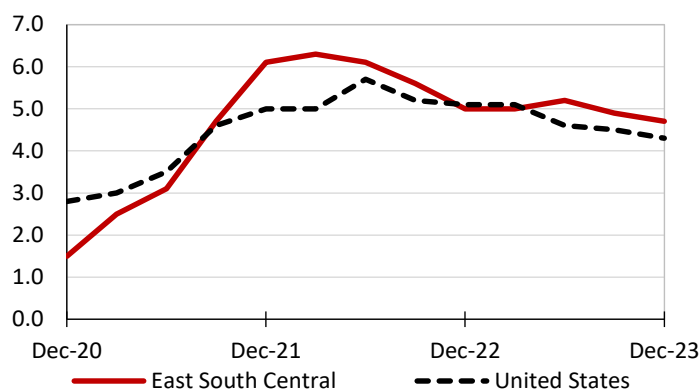
Private industry, December 2023	East South Central (1)	United States
Total compensation	\$31.82	\$43.11
Wages and salaries	22.92	30.33
Total benefits	8.89	12.77
Paid leave	2.06	3.26
Vacation	1.03	1.67
Supplemental pay	1.26	1.71
Insurance	2.46	3.14
Retirement and savings	0.81	1.50
Legally required benefits	2.32	3.17

(1) The states that compose the East South Central census division are: AL, KY, MS, and TN.

Source: U.S. BLS, Employer Costs for Employee Compensation.

## Over-the-year changes in wages and salaries

### 12-month percent changes in ECI



Source: U.S. BLS, Employment Cost Index.