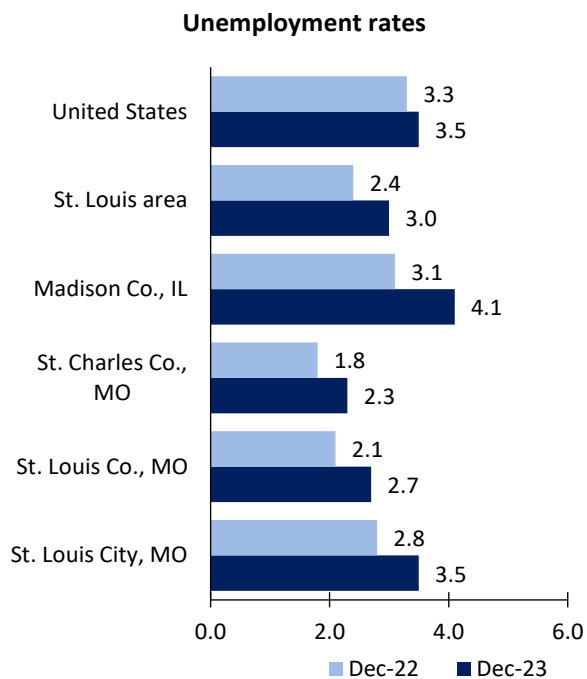


St. Louis Area Economic Summary

Updated March 07, 2024

This summary presents a sampling of economic information for the area; supplemental data are provided for regions and the nation. Subjects include **unemployment, employment, wages, prices, spending, and benefits**. All data are not seasonally adjusted and some may be subject to revision. Area definitions may differ by subject. For more area summaries and geographic definitions, see www.bls.gov/regions/economic-summaries.htm.

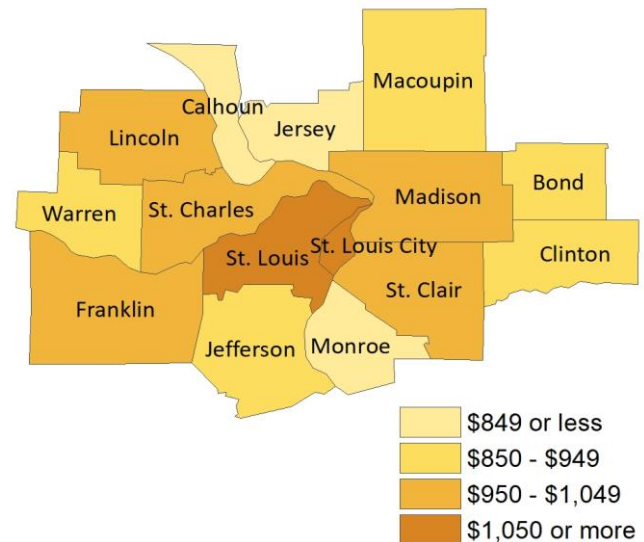
Unemployment rates for the nation and selected areas



Average weekly wages for all industries by county

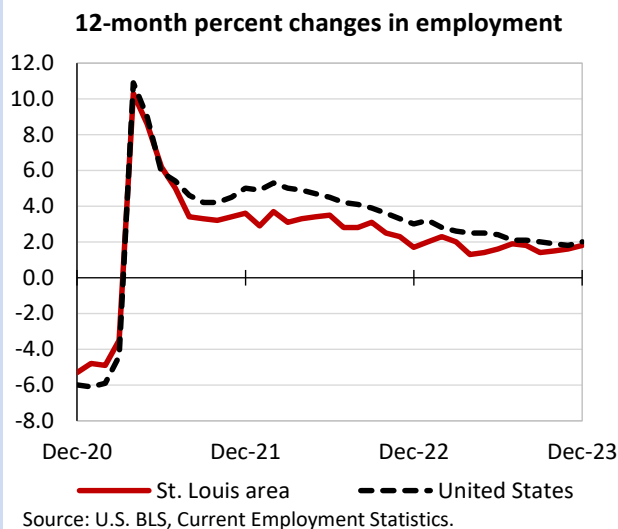
St. Louis area, third quarter 2023

(U.S. = \$1,334; Area = \$1,231)



Source: U.S. BLS, Quarterly Census of Employment and Wages.

Over-the-year changes in employment on nonfarm payrolls and employment by major industry sector

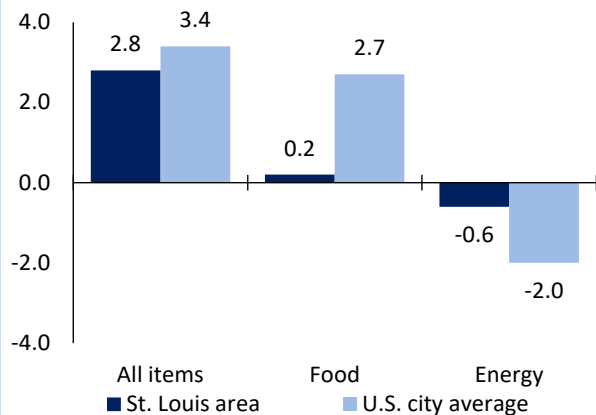


St. Louis area employment (number in thousands)	Dec. 2023	Change from Dec. 2022 to Dec. 2023	
		Number	Percent
Total nonfarm	1,449.5	25.9	1.8
Mining, logging, and construction	71.5	0.4	0.6
Manufacturing	121.4	3.1	2.6
Trade, transportation, and utilities	272.8	0.3	0.1
Information	28.6	0.3	1.1
Financial activities	99.3	1.4	1.4
Professional and business services	219.7	-1.0	-0.5
Education and health services	274.7	10.5	4.0
Leisure and hospitality	150.7	9.0	6.4
Other services	56.7	2.5	4.6
Government	154.1	-0.6	-0.4

Source: U.S. BLS, Current Employment Statistics.

Over-the-year change in the prices paid by urban consumers for selected categories

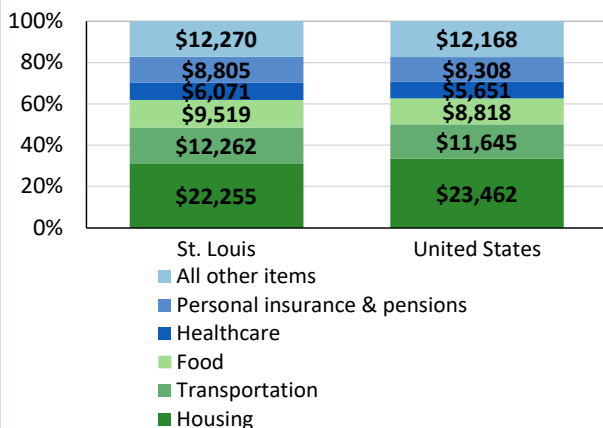
12-month percent change in CPI-U, December 2023



Source: U.S. BLS, Consumer Price Index.

Average annual spending and percent distribution for selected categories

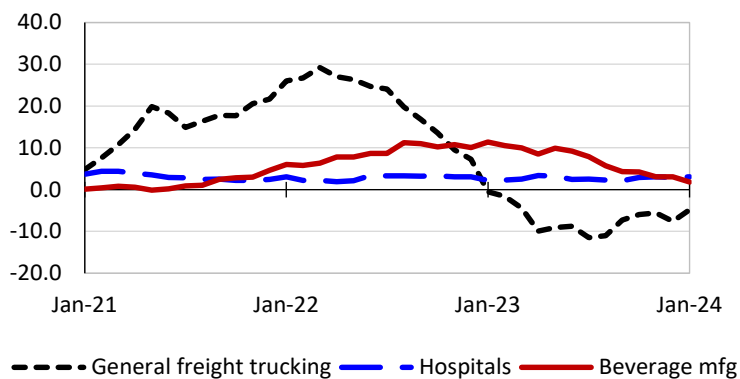
Average annual expenditures, United States and St. Louis, 2021-22



Source: U.S. BLS, Consumer Expenditure Survey.

Over-the-year changes in the selling prices received by producers for selected industries nationwide

12-month percent changes in PPI



Source: U.S. BLS, Producer Price Index.

Average hourly wages for selected occupations

Occupation	St. Louis area	United States
All occupations	\$28.30	\$29.76
General and operations managers	54.93	59.07
Project management specialists	45.08	48.85
Accountants and auditors	37.46	41.70
Stockers and order fillers	17.84	17.09
Nursing assistants	16.41	17.41
Cooks, restaurant	15.55	16.32

Source: U.S. BLS, Occupational Employment and Wage Statistics, May 2022.

Employer costs per hour worked for wages and selected employee benefits by geographic division

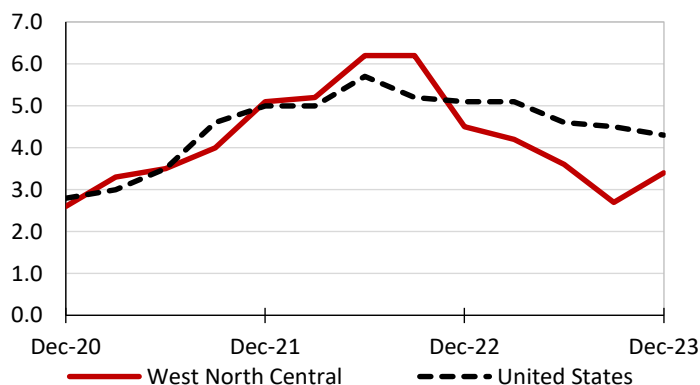
Private industry, September 2023	West North Central (1)	United States
Total compensation	\$35.82	\$41.53
Wages and salaries	24.75	29.34
Total benefits	11.07	12.19
Paid leave	2.49	3.09
Vacation	1.31	1.59
Supplemental pay	1.58	1.55
Insurance	3.16	3.04
Retirement and savings	1.13	1.41
Legally required benefits	2.71	3.11

(1) The states that compose the West North Central census division are: IA, KS, MN, MO, NE, ND, and SD.

Source: U.S. BLS, Employer Costs for Employee Compensation.

Over-the-year changes in wages and salaries

12-month percent changes in ECI



Source: U.S. BLS, Employment Cost Index.