

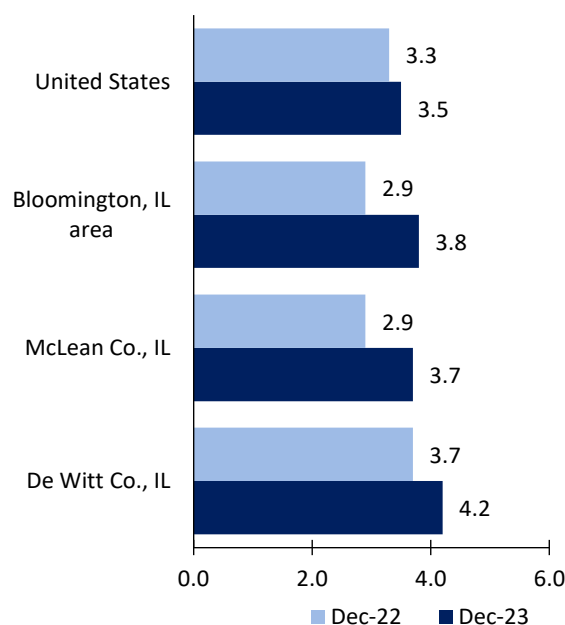
# Bloomington, IL Area Economic Summary

Updated March 05, 2024

This summary presents a sampling of economic information for the area; supplemental data are provided for regions and the nation. Subjects include **unemployment, employment, wages, prices, spending, and benefits**. All data are not seasonally adjusted and some may be subject to revision. Area definitions may differ by subject. For more area summaries and geographic definitions, see [www.bls.gov/regions/economic-summaries.htm](http://www.bls.gov/regions/economic-summaries.htm).

## Unemployment rates for the nation and selected areas

### Unemployment rates

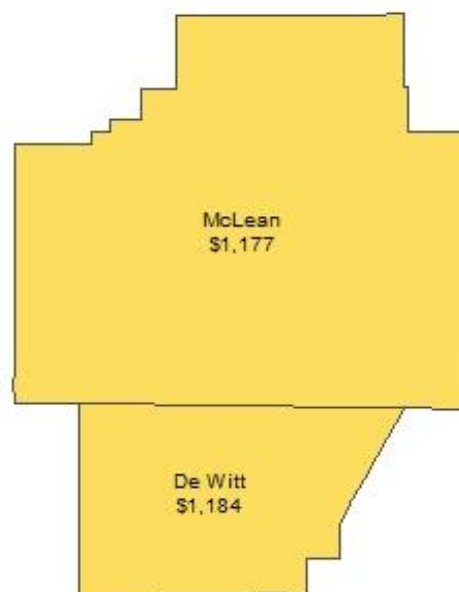


Source: U.S. BLS, Local Area Unemployment Statistics.

## Average weekly wages for all industries by county

### Bloomington, IL area, second quarter 2023

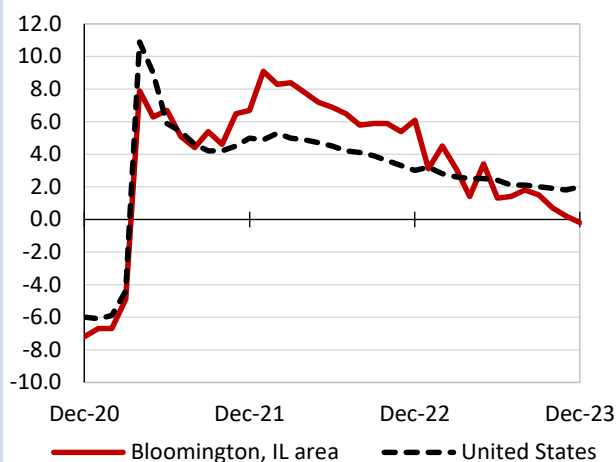
(U.S. = \$1,332; Area = \$1,177)



Source: U.S. BLS, Quarterly Census of Employment and Wages.

## Over-the-year changes in employment on nonfarm payrolls and employment by major industry sector

### 12-month percent changes in employment



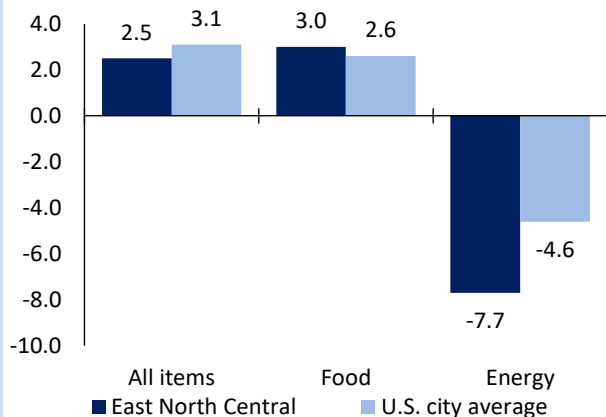
Source: U.S. BLS, Current Employment Statistics.

| Bloomington, IL area employment<br>(number in thousands) | Dec. 2023 | Change from Dec. 2022 to Dec. 2023 |         |
|--|-----------|------------------------------------|---------|
|  |           | Number                             | Percent |
| Total nonfarm  | 97.9      | -0.2                               | -0.2    |
| Mining, logging, and construction                        | 2.7       | -0.2                               | -6.9    |
| Manufacturing  | 9.9       | 0.1                                | 1.0     |
| Trade, transportation, and utilities                     | 15.2      | 0.3                                | 2.0     |
| Information  | 0.4       | -0.1                               | -20.0   |
| Financial activities                                     | 19.7      | -0.1                               | -0.5    |
| Professional and business services                       | 9.3       | -0.3                               | -3.1    |
| Education and health services                            | 11.3      | 0.1                                | 0.9     |
| Leisure and hospitality                                  | 10.1      | -0.1                               | -1.0    |
| Other services   | 3.6       | 0.1                                | 2.9     |
| Government   | 15.7      | 0.0                                | 0.0     |

Source: U.S. BLS, Current Employment Statistics.

## Over-the-year change in the prices paid by urban consumers for selected categories

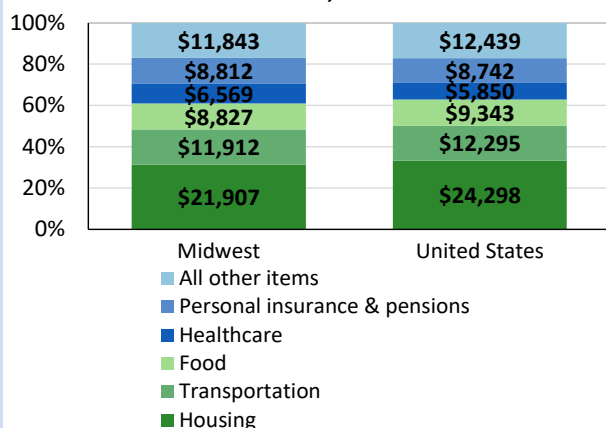
### 12-month percent change in CPI-U, January 2024



Source: U.S. BLS, Consumer Price Index.

## Average annual spending and percent distribution for selected categories

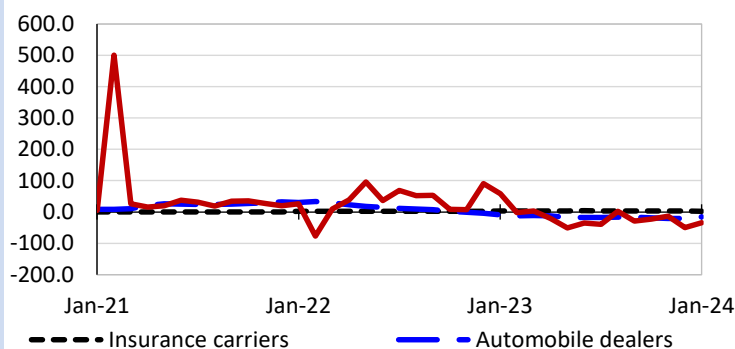
### Average annual expenditures, United States and Midwest, 2022



Source: U.S. BLS, Consumer Expenditure Survey.

## Over-the-year changes in the selling prices received by producers for selected industries nationwide

### 12-month percent changes in PPI



Source: U.S. BLS, Producer Price Index.

## Average hourly wages for selected occupations

| Occupation                                   | Bloomington, IL area | United States |
|--|----------------------|---------------|
| All occupations                              | \$29.09              | \$29.76       |
| Human resources specialists                  | 37.37                | 35.13         |
| Electricians                                 | 36.22                | 31.39         |
| Automotive service technicians and mechanics | 23.23                | 23.89         |
| Bookkeeping, accounting, and auditing clerks | 21.44                | 22.81         |
| Cleaners of vehicles and equipment           | 15.40                | 15.74         |
| Cashiers                                     | 13.59                | 13.81         |

Source: U.S. BLS, Occupational Employment and Wage Statistics, May 2022.

## Employer costs per hour worked for wages and selected employee benefits by geographic division

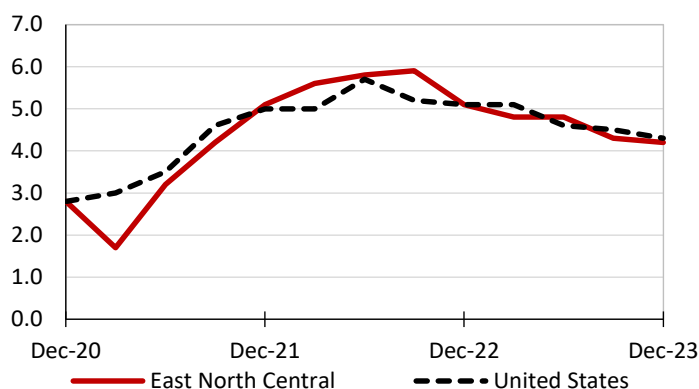
| Private industry, September 2023 | East North Central (1) | United States |
|----------------------------------|------------------------|---------------|
| Total compensation               | \$42.14                | \$41.53       |
| Wages and salaries               | 29.10                  | 29.34         |
| Total benefits                   | 13.03                  | 12.19         |
| Paid leave                       | 3.13                   | 3.09          |
| Vacation                         | 1.67                   | 1.59          |
| Supplemental pay                 | 1.86                   | 1.55          |
| Insurance                        | 3.34                   | 3.04          |
| Retirement and savings           | 1.68                   | 1.41          |
| Legally required benefits        | 3.03                   | 3.11          |

(1) The states that compose the East North Central census division are: IL, IN, MI, OH, and WI.

Source: U.S. BLS, Employer Costs for Employee Compensation.

## Over-the-year changes in wages and salaries

### 12-month percent changes in ECI



Source: U.S. BLS, Employment Cost Index.