

**Transmission of material in this release is embargoed until 8:30 a.m. (EDT) Thursday, October 15, 2009**

USDL-09-1239

Technical information: (202) 691-7000 • Reed.Steve@bls.gov • www.bls.gov/cpi  
Media Contact: (202) 691-5902 • PressOffice@bls.gov

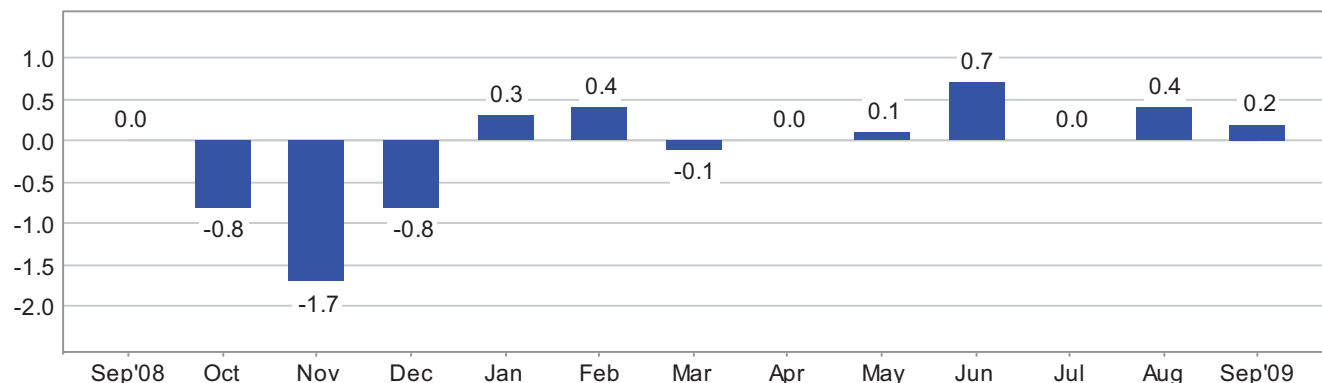
### CONSUMER PRICE INDEX – SEPTEMBER 2009

On a seasonally adjusted basis, the Consumer Price Index for All Urban Consumers (CPI-U) rose 0.2 percent in September, the Bureau of Labor Statistics reported today. The increase was less than the 0.4 percent rise in August. The index has decreased 1.3 percent over the last 12 months on a not seasonally adjusted basis.

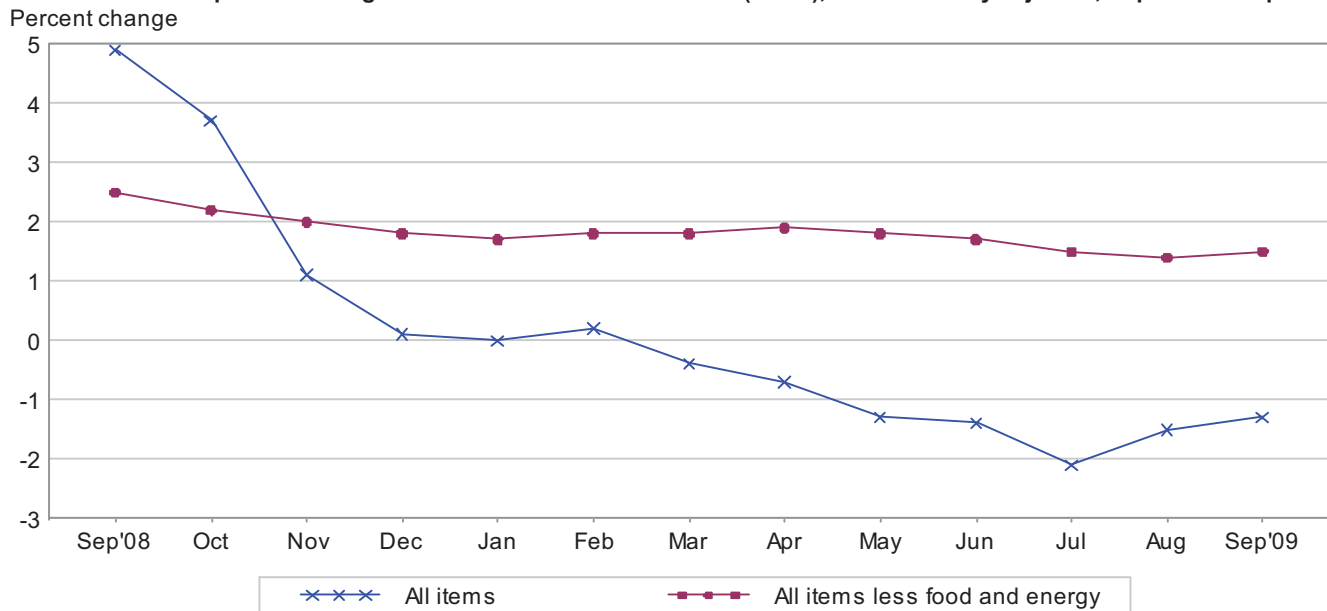
The seasonally adjusted increase in the all items index was broad based, although tempered by a decline in the food index. The all items less food and energy index increased 0.2 percent in September after increasing 0.1 percent in each of the previous two months. Contributing to this increase were advances in the indexes for lodging away from home, medical care, new vehicles, used cars and trucks, and public transportation. The increase occurred despite declines in the indexes for rent and owners' equivalent rent, the first decreases in those indexes since 1992. The energy index also increased in September, as increases in the indexes for gasoline, fuel oil and electricity more than offset a decline in the index for natural gas.

In contrast to these increases, the food index declined, falling for the sixth time in the last eight months. The index for food away from home increased, but the food at home index declined as the indexes for fruits and vegetables and for meats, poultry, fish and eggs fell sharply. Both the food and energy indexes have declined over the past 12 months. The decline in the food index is the first 12-month decrease in that index in over 40 years.

**Chart 1. One-month percent change in CPI for All Urban Consumers (CPI-U), seasonally adjusted, Sep. 2008 - Sep. 2009**  
Percent change



**Chart 2. 12-month percent change in CPI for All Urban Consumers (CPI-U), not seasonally adjusted, Sep. 2008 - Sep. 2009**



**Table A. Percent changes in CPI for All Urban Consumers (CPI-U): U.S. city average**

	Seasonally adjusted changes from preceding month							Un-adjusted 12-mos. ended Sep. 2009
	Mar. 2009	Apr. 2009	May 2009	June 2009	July 2009	Aug. 2009	Sep. 2009	
All items .....	-1	.0	.1	.7	.0	.4	.2	-1.3
Food .....	-1	-2	-2	.0	-3	.1	-.1	-2
Food at home .....	-4	-6	-5	.0	-5	.0	-.3	-2.5
Food away from home <sup>1</sup> .....	.1	.3	.1	.1	.1	.1	.1	2.6
Energy .....	-3.0	-2.4	.2	7.4	-4	4.6	.6	-21.6
Energy commodities .....	-4.7	-2.6	2.3	16.2	-4	8.5	1.1	-30.1
Gasoline (all types) .....	-4.0	-2.8	3.1	17.3	-8	9.1	1.0	-29.7
Fuel oil .....	-8.5	-.3	-3.3	4.8	-1.5	6.2	1.5	-36.0
Energy services .....	-1.4	-2.2	-1.7	-1.2	-3	.0	.1	-8.0
Electricity .....	-2	-6	-4	-1.9	-6	-.1	.6	-.1
Utility (piped) gas service .....	-4.8	-7.0	-5.7	1.3	.9	.4	-1.7	-28.0
All items less food and energy .....	.2	.3	.1	.2	.1	.1	.2	1.5
Commodities less food and energy								
commodities .....	.4	.5	.2	.3	.2	-.3	.3	1.6
New vehicles .....	.6	.4	.5	.7	.5	-1.3	.4	1.6
Used cars and trucks .....	-1.7	-.1	1.0	.9	.0	1.9	1.6	-2.7
Apparel .....	-2	-2	-2	.7	.6	-.1	.1	1.1
Medical care commodities .....	.2	.3	.4	.1	-1	.5	.6	4.1
Services less energy services .....	.1	.2	.1	.1	.0	.2	.1	1.5
Shelter .....	.0	.2	.1	.1	-2	.1	.0	.7
Transportation services .....	-.1	.3	-.1	-.1	.5	.6	.7	2.0
Medical care services .....	.2	.4	.3	.2	.3	.2	.4	3.3

<sup>1</sup> Not seasonally adjusted.

## **Consumer Price Index Data for September 2009**

### **Food**

After rising 0.1 percent in August, the food index declined 0.1 percent in September. The index for food away from home rose 0.1 percent while the food at home index declined 0.3 percent, its eighth decline in the last 10 months. The September decrease was driven by declines in the indexes for fruits and vegetables, which fell 1.2 percent, and for meats, poultry, fish and eggs, which decreased 1.0 percent. The index for nonalcoholic beverages was unchanged in September, while the other grocery store food groups posted increases. After declining for nine straight months, the index for dairy and related products rose 0.5 percent in September. The cereals and bakery products index increased 0.3 percent and the index for other food at home rose 0.1 percent. Over the past year, the food at home index has decreased 2.5 percent, with the fruits and vegetables, dairy, and meat groups all posting significant declines. The food index has declined 0.2 percent since September 2008, the first 12-month decrease since April 1967.

### **Energy**

The energy index rose 0.6 percent in September after increasing 4.6 percent in August. The index for energy commodities rose 1.1 percent, with the gasoline index increasing 1.0 percent. (Before seasonal adjustment, gasoline prices fell 2.1 percent in September.) The index for energy services, which was unchanged in August, rose 0.1 percent in September. The electricity index rose 0.6 percent while the index for natural gas declined 1.7 percent. Over the past 12 months, the energy index has fallen 21.6 percent with all its major components declining. The gasoline index decreased 29.7 percent, the index for natural gas declined 28.0 percent, and the electricity index fell 0.1 percent.

### **All items less food and energy**

The index for all items less food and energy rose 0.2 percent in September after increasing 0.1 percent in both July and August. One contributor to the increase was the medical care index, which rose 0.4 percent in September. The index for medical care commodities rose 0.6 percent in September, with the prescription drugs index rising 0.6 percent and the index for nonprescription drugs advancing 1.1 percent. Several transportation indexes contributed to the increase in the index for all items less food and energy. The new vehicles index, which declined 1.3 percent in August, rose 0.4 percent in September. The index for used cars and trucks increased sharply for the second month in a row, rising 1.6 percent, and the index for public transportation rose 2.1 percent as the airline fares index increased 3.4 percent. The tobacco index rose 1.0 percent in September and has risen 26.1 percent since February. The shelter index was unchanged in September, as a 1.5 percent increase in the index for lodging away from home was offset by declines of 0.1 percent in the heavily weighted rent and owners' equivalent rent indexes. For the past 12 months, the index for all items less food and energy has risen 1.5 percent. The indexes for shelter, new vehicles, medical care and tobacco have all risen during the period, while the indexes for used cars and trucks and public transportation have declined.

### **Not seasonally adjusted CPI measures**

The Consumer Price Index for All Urban Consumers (CPI-U) decreased 1.3 percent over the last 12 months to an index level of 215.969 (1982-84=100). For the month, the index increased 0.1 percent prior to seasonal adjustment.

The Consumer Price Index for Urban Wage Earners and Clerical Workers (CPI-W) decreased 1.7 percent over the last 12 months to an index level of 211.322 (1982-84=100). For the month, the index increased 0.1 percent prior to seasonal adjustment.

The Chained Consumer Price Index for All Urban Consumers (C-CPI-U) decreased 1.4 percent over the last 12 months. For the month, the index increased 0.1 percent on a not seasonally adjusted basis. Please note that the indexes for the post-2007 period are subject to revision.

---

**The Consumer Price Index for October 2009 is scheduled to be released on Wednesday, November 18, 2009, at 8:30 a.m. (EST).**

## **Facilities for Sensory Impaired**

Information from this release will be made available to sensory impaired individuals upon request. Voice phone: 202-691-5200, Federal Relay Services: 1-800-877-8339.

## **Brief Explanation of the CPI**

The Consumer Price Index (CPI) is a measure of the average change in prices over time of goods and services purchased by households. The Bureau of Labor Statistics publishes CPIs for two population groups: (1) the CPI for Urban Wage Earners and Clerical Workers (CPI-W), which covers households of wage earners and clerical workers that comprise approximately 32 percent of the total population and (2) the CPI for All Urban Consumers (CPI-U) and the Chained CPI for All Urban Consumers (C-CPI-U), which cover approximately 87 percent of the total population and include in addition to wage earners and clerical worker households, groups such as professional, managerial, and technical workers, the self-employed, short-term workers, the unemployed, and retirees and others not in the labor force.

The CPIs are based on prices of food, clothing, shelter, and fuels, transportation fares, charges for doctors' and dentists' services, drugs, and other goods and services that people buy for day-to-day living. Prices are collected in 87 urban areas across the country from about 50,000 housing units and approximately 23,000 retail establishments-department stores, supermarkets, hospitals, filling stations, and other types of stores and service establishments. All taxes directly associated with the purchase and use of items are included in the index. Prices of fuels and a few other items are obtained every month in all 87 locations. Prices of most other commodities and services are collected every month in the three largest geographic areas and every other month in other areas. Prices of most goods and services are obtained by personal visits or telephone calls of the Bureau's trained representatives.

In calculating the index, price changes for the various items in each location are averaged together with weights, which represent their importance in the spending of the appropriate population group. Local data are then combined to obtain a U.S. city average. For the CPI-U and CPI-W separate indexes are also published by size of city, by region of the country, for cross-classifications of regions and population-size classes, and for 27 local areas. Area indexes do not measure differences in the level of prices among cities; they only measure the average change in prices for each area since the base period. For the C-CPI-U data are issued only at the national level. It is important to note that the CPI-U and CPI-W are considered final when released, but the C-CPI-U is issued in preliminary form and subject to two annual revisions.

The index measures price change from a designed reference date. For the CPI-U and the CPI-W the reference base is 1982-84 equals 100.0. The reference base for the C-CPI-U is December 1999 equals 100. An increase of 16.5 percent from the reference base, for example, is shown as 116.5. This change can also be expressed in dollars as follows: the price of a base period market basket of goods and services in the CPI has risen from \$10 in 1982-84 to \$11.65.

For further details visit the CPI home page on the Internet at <http://www.bls.gov/cpi/> or contact our CPI Information and Analysis Section on (202) 691-7000.

## Note on Sampling Error in the Consumer Price Index

The CPI is a statistical estimate that is subject to sampling error because it is based upon a sample of retail prices and not the complete universe of all prices. BLS calculates and publishes estimates of the 1-month, 2-month, 6-month and 12-month percent change standard errors annually, for the CPI-U. These standard error estimates can be used to construct confidence intervals for hypothesis testing. For example, the estimated standard error of the 1 month percent change is 0.04 percent for the U.S. All Items Consumer Price Index. This means that if we repeatedly sample from the universe of all retail prices using the same methodology, and estimate a percentage change for each sample, then 95% of these estimates would be within 0.08 percent of the 1 month percentage change based on all retail prices. For example, for a 1-month change of 0.2 percent in the All Items CPI for All Urban Consumers, we are 95 percent confident that the actual percent change based on all retail prices would fall between 0.12 and 0.28 percent. For the latest data, including information on how to use the estimates of standard error, see “Variance Estimates for Price Changes in the Consumer Price Index, January-December 2008”. These data are available on the CPI home page (<http://www.bls.gov/cpi>), or by using the following link <http://www.bls.gov/cpi/cpivar2008.pdf>

## Calculating Index Changes

Movements of the indexes from one month to another are usually expressed as percent changes rather than changes in index points, because index point changes are affected by the level of the index in relation to its base period while percent changes are not. The example below illustrates the computation of index point and percent changes.

Percent changes for 3-month and 6-month periods are expressed as annual rates and are computed according to the standard formula for compound growth rates. These data indicate what the percent change would be if the current rate were maintained for a 12-month period.

### Index Point Change

CPI	202.416
Less previous index	201.800
Equals index point change	.616

### Percent Change

Index point difference	.616
Divided by the previous index	201.800
Equals	0.003
Results multiplied by one hundred	0.003x100
Equals percent change	0.3

## Regions Defined

The states in the four regions shown in Tables 3 and 6 are listed below.

The Northeast--Connecticut, Maine, Massachusetts, New Hampshire, New York, New Jersey, Pennsylvania, Rhode Island, and Vermont.

The Midwest--Illinois, Indiana, Iowa, Kansas, Michigan, Minnesota, Missouri, Nebraska, North Dakota, Ohio, South Dakota, and Wisconsin.

The South--Alabama, Arkansas, Delaware, Florida, Georgia, Kentucky, Louisiana, Maryland, Mississippi, North Carolina, Oklahoma, South Carolina, Tennessee, Texas, Virginia, West Virginia, and the District of Columbia.

The West--Alaska, Arizona, California, Colorado, Hawaii, Idaho, Montana, Nevada, New Mexico, Oregon, Utah, Washington, and Wyoming.

## **A Note on Seasonally Adjusted and Unadjusted Data**

Because price data are used for different purposes by different groups, the Bureau of Labor Statistics publishes seasonally adjusted as well as unadjusted changes each month.

For analyzing general price trends in the economy, seasonally adjusted changes are usually preferred since they eliminate the effect of changes that normally occur at the same time and in about the same magnitude every year--such as price movements resulting from changing climatic conditions, production cycles, model changeovers, holidays, and sales.

The unadjusted data are of primary interest to consumers concerned about the prices they actually pay. Unadjusted data also are used extensively for escalation purposes. Many collective bargaining contract agreements and pension plans, for example, tie compensation changes to the Consumer Price Index before adjustment for seasonal variation.

Seasonal factors used in computing the seasonally adjusted indexes are derived by the X-12-ARIMA Seasonal Adjustment Method. Seasonally adjusted indexes and seasonal factors are computed annually. Each year, the last 5 years of seasonally adjusted data are revised. Data from January 2004 through December 2008 were replaced in January 2009. Exceptions to the usual revision schedule were: the updated seasonal data at the end of 1977 replaced data from 1967 through 1977; and, in January 2002, dependently seasonally adjusted series were revised for January 1987-December 2001 as a result of a change in the aggregation weights for dependently adjusted series. For further information, please see "Aggregation of Dependently Adjusted Seasonally Adjusted Series," in the October 2001 issue of the CPI Detailed Report.

The seasonal movement of all items and 54 other aggregations is derived by combining the seasonal movement of 73 selected components. Each year the seasonal status of every series is reevaluated based upon certain statistical criteria. If any of the 73 components change their seasonal adjustment status from seasonally adjusted to not seasonally adjusted, not seasonally adjusted data will be used in the aggregation of the dependent series for the last 5 years, but the seasonally adjusted indexes will be used before that period. Note: 47 of the 73 components are seasonally adjusted for 2009.

Seasonally adjusted data, including the all items index levels, are subject to revision for up to five years after their original release. For this reason, BLS advises against the use of these data in escalation agreements.

Effective with the calculation of the seasonal factors for 1990, the Bureau of Labor Statistics has used an enhanced seasonal adjustment procedure called Intervention Analysis Seasonal Adjustment for some CPI series. Intervention Analysis Seasonal Adjustment allows for better estimates of seasonally adjusted data. Extreme values and/or sharp movements which might distort the seasonal pattern are estimated and removed from the data prior to calculation of seasonal factors. Beginning with the calculation of seasonal factors for 1996, X-12-ARIMA software was used for Intervention Analysis Seasonal Adjustment.

For the seasonal factors introduced in January 2009, BLS adjusted 29 series using Intervention Analysis Seasonal Adjustment, including selected food and beverage items, motor fuels, electricity and vehicles. For example, this procedure was used for the Motor fuel series to offset the effects of events such as damage to oil refineries from Hurricane Katrina.

For a complete list of Intervention Analysis Seasonal Adjustment series and explanations, please refer to the article “Intervention Analysis Seasonal Adjustment”, located on our website at <http://www.bls.gov/cpi/cpisapage.htm>.

For additional information on seasonal adjustment in the CPI, please write to the Bureau of Labor Statistics, Division of Consumer Prices and Price Indexes, Washington, DC 20212 or contact Jeff Wilson at (202) 691-6968, or by e-mail at [Wilson.Jeff@bls.gov](mailto:Wilson.Jeff@bls.gov). If you have general questions about the CPI, please call our information staff at (202) 691-7000.



**Table 1. Consumer Price Index for All Urban Consumers (CPI-U): U.S. city average, by expenditure category and commodity and service group**

(1982-84=100, unless otherwise noted)

CPI-U Expenditure category	Relative importance, December 2008	Unadjusted indexes		Unadjusted percent change to Sep. 2009 from—		Seasonally adjusted percent change from—		
		Aug. 2009	Sep. 2009	Sep. 2008	Aug. 2009	June to July	July to Aug.	Aug. to Sep.
All items .....	100.000	215.834	215.969	-1.3	0.1	0.0	0.4	0.2
All items (1967=100) .....	-	646.544	646.948	-	-	-	-	-
Food and beverages .....	15.757	217.701	217.617	.0	.0	-2	.1	-.1
Food .....	14.629	217.350	217.218	-.2	-.1	-3	.1	-.1
Food at home .....	8.156	213.722	213.227	-2.5	-2	-5	.0	-.3
Cereals and bakery products .....	1.150	252.382	251.231	.1	-.5	-1	-.1	.3
Meats, poultry, fish, and eggs .....	1.898	202.911	201.755	-3.9	-6	-1.3	.4	-1.0
Dairy and related products <sup>1</sup> .....	.910	192.381	193.353	-9.5	.5	-6	-.4	.5
Fruits and vegetables .....	1.194	267.309	267.609	-6.4	.1	-3	-.7	-1.2
Nonalcoholic beverages and beverage materials .....	.982	162.953	162.911	.9	.0	-3	.4	.0
Other food at home .....	2.022	191.317	190.571	1.4	-4	-3	.2	.1
Sugar and sweets .....	.300	195.430	196.998	3.7	.8	-1.3	.4	1.0
Fats and oils .....	.241	200.578	200.009	-3.0	-3	-3	.1	-.3
Other foods .....	1.481	206.064	204.728	1.7	-6	-1	.2	-.1
Other miscellaneous foods <sup>1 2</sup> .....	.433	121.892	122.099	.8	.2	-2	-.1	.2
Food away from home <sup>1</sup> .....	6.474	223.675	224.003	2.6	.1	.1	.1	.1
Other food away from home <sup>1 2</sup> .....	.314	156.697	157.302	3.5	.4	.5	.1	.4
Alcoholic beverages .....	1.127	220.946	221.474	2.5	.2	.3	.1	.3
Housing .....	43.421	217.827	217.178	-.5	-3	-2	.1	.0
Shelter .....	33.200	250.248	249.501	.7	-3	-2	.1	.0
Rent of primary residence <sup>3</sup> .....	5.957	249.029	248.965	1.6	.0	.0	.0	-.1
Lodging away from home <sup>2</sup> .....	2.478	137.454	133.706	-6.9	-2.7	-2.1	.5	1.5
Owners' equivalent rent of primary residence <sup>3 4</sup> .....	24.433	257.155	256.865	1.3	-.1	.0	.1	-.1
Tenants' and household insurance <sup>1 2</sup> .....	.333	121.830	122.170	1.9	.3	.2	.4	.3
Fuels and utilities .....	5.431	212.661	211.618	-7.4	-5	-1	.4	.2
Household energy .....	4.460	189.735	188.509	-10.0	-6	-3	.2	.1
Fuel oil and other fuels .....	.301	237.521	236.616	-32.2	-4	-1.1	3.9	1.1
Gas (piped) and electricity <sup>3</sup> .....	4.159	195.475	194.176	-8.0	-7	-3	.0	.1
Water and sewer and trash collection services <sup>2</sup> .....	.971	163.136	163.429	5.9	.2	.6	.8	.4
Household furnishings and operations .....	4.790	128.304	128.201	-.3	-.1	-.1	-.6	.0
Household operations <sup>1 2</sup> .....	.781	150.494	150.437	.2	.0	.0	.3	.0
Apparel .....	3.691	117.130	122.476	1.1	4.6	.6	-.1	.1
Men's and boys' apparel .....	.923	110.835	112.933	.2	1.9	-.7	.6	-.8
Women's and girls' apparel .....	1.541	103.991	112.535	.7	8.2	1.2	-.3	.3
Infants' and toddlers' apparel .....	.183	113.673	116.309	2.5	2.3	-.7	1.2	.1
Footwear .....	.688	125.292	128.670	3.0	2.7	1.1	-.2	.1
Transportation .....	15.314	184.386	183.932	-9.8	-2	.2	2.3	.8
Private transportation .....	14.189	179.987	179.466	-9.9	-3	.1	2.4	.7
New and used motor vehicles <sup>2</sup> .....	6.931	93.126	93.440	1.0	.3	.3	-.4	.5
New vehicles .....	4.480	134.080	134.576	1.6	.4	.5	-1.3	.4
Used cars and trucks .....	1.628	128.028	129.369	-2.7	1.0	.0	1.9	1.6
Motor fuel .....	3.164	225.089	220.690	-30.0	-2.0	-4	8.8	1.1
Gasoline (all types) .....	2.964	225.179	220.542	-29.7	-2.1	-8	9.1	1.0
Motor vehicle parts and equipment <sup>1</sup> .....	.382	133.531	133.406	1.8	-.1	-.4	-.1	-.1
Motor vehicle maintenance and repair <sup>1</sup> .....	1.188	243.494	244.493	3.1	.4	.1	.2	.4
Public transportation .....	1.125	238.997	239.855	-8.2	.4	1.9	1.3	2.1
Medical care .....	6.390	376.537	377.727	3.5	.3	.2	.3	.4
Medical care commodities .....	1.625	305.797	307.671	4.1	.6	-.1	.5	.6
Medical care services .....	4.765	398.303	399.160	3.3	.2	.3	.2	.4
Professional services .....	2.702	320.252	320.756	2.6	.2	.1	.1	.4
Hospital and related services <sup>3</sup> .....	1.545	570.150	572.991	6.6	.5	.7	.5	.6

See footnotes at end of table.

**Table 1. Consumer Price Index for All Urban Consumers (CPI-U): U.S. city average, by expenditure category and commodity and service group-Continued**

(1982-84=100, unless otherwise noted)

CPI-U	Relative importance, December 2008	Unadjusted indexes		Unadjusted percent change to Sep. 2009 from—		Seasonally adjusted percent change from—		
		Aug. 2009	Sep. 2009	Sep. 2008	Aug. 2009	June to July	July to Aug.	Aug. to Sep.
<b>Expenditure category</b>								
Recreation <sup>2</sup> .....	5.741	114.755	114.629	0.5	-0.1	0.0	0.1	-0.1
Video and audio <sup>2</sup> .....	1.822	101.474	100.801	-1.9	-7	-2	-2	-7
Education and communication <sup>2</sup> .....	6.301	128.128	129.035	2.8	.7	.3	.2	.1
Education <sup>2</sup> .....	3.107	193.161	195.595	5.1	1.3	.5	.5	.0
Educational books and supplies .....	.221	490.102	493.636	6.7	.7	1.2	.6	.3
Tuition, other school fees, and childcare .....	2.886	555.402	562.635	5.0	1.3	.5	.5	.0
Communication <sup>2</sup> .....	3.194	84.913	85.044	.6	.2	.1	-.2	.2
Information and information processing <sup>1 2</sup> .....	3.022	81.835	81.969	.4	.2	.1	-.2	.2
Telephone services <sup>1 2</sup> .....	2.408	102.674	102.968	1.6	.3	.5	.0	.3
Information technology, hardware and services <sup>1 5</sup> .....	.614	9.499	9.467	-4.4	-3	-1.3	-1.1	-3
Personal computers and peripheral equipment <sup>1 6</sup> .....	.214	78.576	77.997	-14.1	-7	-3.2	-2.8	-7
Other goods and services .....	3.386	372.699	374.219	7.5	.4	.8	.1	.3
Tobacco and smoking products <sup>1</sup> .....	.776	763.634	771.089	29.0	1.0	2.2	.1	1.0
Personal care .....	2.610	204.352	204.751	1.1	.2	.2	.1	.0
Personal care products <sup>1</sup> .....	.651	162.476	162.372	1.7	-1	.4	-.3	-1
Personal care services <sup>1</sup> .....	.647	227.580	228.286	1.6	.3	-1	.1	.3
Miscellaneous personal services .....	1.074	345.137	345.515	.6	.1	.5	.2	-.2
<b>Commodity and service group</b>								
Commodities .....	39.556	171.081	171.559	-4.2	.3	.0	.8	.3
Food and beverages .....	15.757	217.701	217.617	.0	.0	-.2	.1	-.1
Commodities less food and beverages .....	23.799	146.528	147.222	-6.6	.5	.1	1.2	.4
Nondurables less food and beverages .....	13.289	184.366	185.544	-10.3	.6	.5	3.1	.4
Apparel .....	3.691	117.130	122.476	1.1	4.6	.6	-.1	.1
Nondurables less food, beverages, and apparel .....	9.598	230.396	228.954	-13.6	-.6	.2	4.2	.4
Durables .....	10.510	109.129	109.387	-.6	.2	.0	-.6	.4
Services .....	60.444	260.355	260.136	.8	-1	.0	.2	.1
Rent of shelter <sup>4</sup> .....	32.867	260.858	260.064	.7	-.3	-.2	.1	.1
Tenants' and household insurance <sup>1 2</sup> .....	.333	121.830	122.170	1.9	.3	.2	.4	.3
Gas (piped) and electricity <sup>3</sup> .....	4.159	195.475	194.176	-8.0	-7	-3	.0	.1
Water and sewer and trash collection services <sup>2</sup> .....	.971	163.136	163.429	5.9	.2	.6	.8	.4
Household operations <sup>1 2</sup> .....	.781	150.494	150.437	.2	.0	.0	.3	.0
Transportation services .....	5.567	252.234	253.001	2.0	.3	.5	.6	.7
Medical care services .....	4.765	398.303	399.160	3.3	.2	.3	.2	.4
Other services .....	11.002	305.890	307.161	2.5	.4	.3	.3	.0
<b>Special indexes</b>								
All items less food .....	85.371	215.617	215.795	-1.5	.1	.0	.5	.2
All items less shelter .....	66.800	204.776	205.263	-2.2	.2	.1	.6	.3
All items less medical care .....	93.610	207.855	207.949	-1.6	.0	.0	.5	.2
Commodities less food .....	24.926	149.155	149.846	-6.2	.5	.1	1.2	.4
Nondurables less food .....	14.416	186.552	187.691	-9.5	.6	.5	2.9	.4
Nondurables less food and apparel .....	10.726	228.446	227.195	-12.4	-.5	.2	3.8	.4
Nondurables .....	29.046	201.191	201.783	-5.4	.3	.1	1.6	.1
Services less rent of shelter <sup>4</sup> .....	27.577	279.697	280.194	.9	.2	.3	.4	.3
Services less medical care services .....	55.679	249.316	249.043	.6	-1	.0	.2	.1
Energy .....	7.624	204.971	202.243	-21.6	-1.3	-.4	4.6	.6
All items less energy .....	92.376	218.642	219.076	1.2	.2	.0	.1	.1
All items less food and energy .....	77.746	219.596	220.137	1.5	.2	.1	.1	.2
Commodities less food and energy commodities .....	21.461	141.310	142.729	1.6	1.0	.2	-.3	.3
Energy commodities .....	3.465	227.204	222.961	-30.1	-1.9	-.4	8.5	1.1
Services less energy services .....	56.285	267.008	266.894	1.5	.0	.0	.2	.1
Purchasing power of the consumer dollar (1982-84=\$1.00) .....	-	\$ .463	\$ .463	-	-	-	-	-
Purchasing power of the consumer dollar (1967=\$1.00) .....	-	\$ .155	\$ .155	-	-	-	-	-

<sup>1</sup> Not seasonally adjusted.  
<sup>2</sup> Indexes on a December 1997=100 base.  
<sup>3</sup> This index series was calculated using a Laspeyres estimator. All other item stratum index series were calculated using a geometric means estimator.  
<sup>4</sup> Indexes on a December 1982=100 base.

<sup>5</sup> Indexes on a December 1988=100 base.  
<sup>6</sup> Indexes on a December 2007=100 base.  
 - Data not available.  
 NOTE: Index applies to a month as a whole, not to any specific date.

**Table 2. Consumer Price Index for All Urban Consumers (CPI-U): Seasonally adjusted U.S. city average, by expenditure category and commodity and service group**

(1982-84=100, unless otherwise noted)

CPI-U	Seasonally adjusted indexes				Seasonally adjusted annual rate percent change for					
					3 months ended—			6 months ended—		
	June 2009	July 2009	Aug. 2009	Sep. 2009	Dec. 2008	Mar. 2009	June 2009	Sep. 2009	Mar. 2009	Sep. 2009
<b>Expenditure category</b>										
All items .....	214.459	214.469	215.428	215.791	-12.4	2.2	3.3	2.5	-5.4	2.9
Food and beverages .....	218.094	217.638	217.829	217.670	2.7	-7	-1.3	-8	1.0	-1.0
Food .....	217.838	217.291	217.478	217.257	2.5	-8	-1.5	-1.1	.8	-1.3
Food at home .....	214.999	213.876	213.951	213.298	.8	-3.6	-4.0	-3.1	-1.4	-3.6
Cereals and bakery products .....	251.576	251.380	251.049	251.711	6.9	-2.8	-3.6	.2	2.0	-1.7
Meats, poultry, fish, and eggs .....	204.365	201.738	202.601	200.583	.0	-4.3	-4.0	-7.2	-2.2	-5.6
Dairy and related products <sup>1</sup> .....	194.197	193.118	192.381	193.353	-5.0	-19.5	-10.6	-1.7	-12.5	-6.2
Fruits and vegetables .....	276.092	275.379	273.410	270.064	-14.3	-2.8	.4	-8.5	-8.7	-4.1
Nonalcoholic beverages and beverage materials .....	162.993	162.431	163.008	162.981	6.3	1.9	-4.3	.0	4.1	-2.2
Other food at home .....	190.637	190.071	190.494	190.598	8.4	1.3	-3.7	-.1	4.8	-1.9
Sugar and sweets .....	196.818	194.193	194.991	197.000	9.2	6.6	-1.0	.4	7.9	-.3
Fats and oils .....	201.067	200.428	200.546	199.971	7.2	-10.6	-5.7	-2.2	-2.1	-3.9
Other foods .....	204.694	204.528	204.958	204.773	8.5	2.3	-3.9	.2	5.3	-1.9
Other miscellaneous foods <sup>1 2</sup> .....	122.224	121.990	121.892	122.099	9.0	-4.4	-.6	-.4	2.1	-.5
Food away from home <sup>1</sup> .....	223.163	223.345	223.675	224.003	4.6	2.8	1.7	1.5	3.7	1.6
Other food away from home <sup>1 2</sup> .....	155.841	156.570	156.697	157.302	5.4	.9	3.7	3.8	3.1	3.8
Alcoholic beverages .....	220.105	220.815	221.072	221.709	5.4	.3	1.4	2.9	2.8	2.2
Housing .....	216.984	216.612	216.726	216.770	-.4	-.5	-.6	-.4	-.4	-.5
Shelter .....	249.861	249.410	249.658	249.655	1.0	.6	1.6	-.3	.8	.6
Rent of primary residence <sup>3</sup> .....	249.374	249.293	249.266	249.132	3.0	2.6	1.4	-.4	2.8	.5
Lodging away from home <sup>2</sup> .....	134.507	131.742	132.411	134.342	-9.9	-19.1	3.6	-.5	-14.6	1.5
Owners' equivalent rent of primary residence <sup>3 4</sup> .....	257.138	257.073	257.278	256.911	1.8	2.5	1.4	-.4	2.2	.5
Tenants' and household insurance <sup>1 2</sup> .....	121.083	121.298	121.830	122.170	.3	2.4	1.2	3.6	1.3	2.4
Fuels and utilities .....	206.342	206.046	206.783	207.172	-9.0	-8.5	-14.0	1.6	-8.8	-6.5
Household energy .....	183.526	182.927	183.374	183.627	-11.9	-10.9	-18.1	.2	-11.4	-9.4
Fuel oil and other fuels .....	224.706	222.296	231.023	233.497	-65.9	-39.5	-12.3	16.6	-54.6	1.1
Gas (piped) and electricity <sup>3</sup> .....	189.362	188.839	188.839	188.979	-4.7	-8.5	-18.5	-.8	-6.6	-10.1
Water and sewer and trash collection services <sup>2</sup> .....	160.401	161.408	162.756	163.402	6.4	3.0	6.7	7.7	4.7	7.2
Household furnishings and operations .....	129.428	129.254	128.471	128.455	.2	1.6	.0	-3.0	.9	-1.5
Household operations <sup>1 2</sup> .....	149.995	149.983	150.494	150.437	1.3	.6	-2.4	1.2	1.0	-.6
Apparel .....	120.183	120.865	120.756	120.931	-4.6	5.3	1.5	2.5	.2	2.0
Men's and boys' apparel .....	114.009	113.251	113.938	112.991	-4.5	17.3	-6.7	-3.5	5.8	-5.1
Women's and girls' apparel .....	108.388	109.695	109.390	109.688	-9.6	1.4	6.9	4.9	-4.2	5.9
Infants' and toddlers' apparel .....	115.667	114.831	116.235	116.350	-.2	.1	7.8	2.4	.0	5.1
Footwear .....	126.438	127.790	127.504	127.603	2.2	3.2	3.0	3.7	2.7	3.4
Transportation .....	178.843	179.180	183.312	184.750	-55.5	8.8	19.9	13.9	-30.4	16.9
Private transportation .....	174.831	174.949	179.110	180.352	-57.3	11.1	22.3	13.2	-31.1	17.7
New and used motor vehicles <sup>2</sup> .....	93.227	93.501	93.155	93.605	-5.6	3.1	5.4	1.6	-1.3	3.5
New vehicles .....	136.179	136.826	135.030	135.574	-4.8	7.0	6.6	-1.8	1.0	2.3
Used cars and trucks .....	123.851	123.848	126.157	128.153	-13.8	-15.3	7.2	14.6	-14.6	10.9
Motor fuel .....	203.703	202.924	220.836	223.273	-93.5	37.4	88.1	44.3	-70.2	64.8
Gasoline (all types) .....	204.131	202.498	220.967	223.146	-93.9	47.4	91.6	42.8	-70.1	65.4
Motor vehicle parts and equipment <sup>1</sup> .....	134.270	133.729	133.531	133.406	6.3	4.3	-.6	-2.5	5.3	-1.6
Motor vehicle maintenance and repair <sup>1</sup> .....	242.683	243.031	243.494	244.493	3.8	4.7	.9	3.0	4.3	2.0
Public transportation .....	227.003	231.418	234.384	239.281	-24.0	-17.1	-8.8	23.5	-20.6	6.1
Medical care .....	375.203	375.851	376.919	378.555	2.7	4.0	3.6	3.6	3.3	3.6
Medical care commodities .....	304.820	304.406	306.029	308.016	4.2	5.0	3.2	4.3	4.6	3.7
Medical care services .....	396.846	397.947	398.742	400.180	2.2	3.6	3.8	3.4	2.9	3.6
Professional services .....	319.339	319.810	320.262	321.405	2.4	1.7	3.7	2.6	2.1	3.2
Hospital and related services <sup>3</sup> .....	565.707	569.494	572.422	575.812	4.2	8.8	6.0	7.3	6.5	6.6

See footnotes at end of table.

**Table 2. Consumer Price Index for All Urban Consumers (CPI-U): Seasonally adjusted U.S. city average, by expenditure category and commodity and service group-Continued**

(1982-84=100, unless otherwise noted)

CPI-U Expenditure category	Seasonally adjusted indexes				Seasonally adjusted annual rate percent change for					
					3 months ended—			6 months ended—		
	June 2009	July 2009	Aug. 2009	Sep. 2009	Dec. 2008	Mar. 2009	June 2009	Sep. 2009	Mar. 2009	Sep. 2009
Recreation <sup>2</sup> .....	114.592	114.612	114.731	114.585	0.0	1.8	0.3	0.0	0.9	0.1
Video and audio <sup>2</sup> .....	101.920	101.741	101.530	100.824	-2.1	-2.1	1.1	-4.2	-2.1	-1.6
Education and communication <sup>2</sup> .....	127.366	127.751	127.967	128.074	3.2	2.9	2.9	2.2	3.0	2.6
Education <sup>2</sup> .....	190.734	191.709	192.686	192.711	5.4	5.0	5.7	4.2	5.2	4.9
Educational books and supplies .....	480.501	486.256	489.280	490.667	4.7	4.7	8.6	8.7	4.7	8.7
Tuition, other school fees, and childcare .....	548.730	551.241	554.000	553.955	5.5	5.0	5.5	3.9	5.3	4.7
Communication <sup>2</sup> .....	84.972	85.053	84.909	85.040	1.1	.8	.2	.3	1.0	.3
Information and information processing <sup>1 2</sup> .....	81.909	81.991	81.835	81.969	1.2	.7	-.5	.3	1.0	-.1
Telephone services <sup>1 2</sup> .....	102.182	102.643	102.674	102.968	1.5	1.2	.8	3.1	1.3	1.9
Information technology, hardware and services <sup>1 5</sup> .....	9.731	9.604	9.499	9.467	.2	-1.4	-5.6	-10.4	-6	-8.0
Personal computers and peripheral equipment <sup>1 6</sup> .....	83.476	80.838	78.576	77.997	-9.6	-10.1	-12.1	-23.8	-9.8	-18.2
Other goods and services .....	370.235	373.084	373.425	374.442	1.3	13.5	10.9	4.6	7.2	7.7
Tobacco and smoking products <sup>1</sup> .....	746.283	762.907	763.634	771.089	3.4	61.2	45.9	14.0	29.1	28.9
Personal care .....	204.231	204.714	204.899	204.919	.7	1.6	.8	1.4	1.2	1.1
Personal care products <sup>1</sup> .....	162.301	162.887	162.476	162.372	4.5	3.3	-1.0	.2	3.9	-.4
Personal care services <sup>1</sup> .....	227.572	227.325	227.580	228.286	3.0	3.0	-.7	1.3	3.0	.3
Miscellaneous personal services .....	343.178	344.739	345.448	344.770	-1.9	.4	2.1	1.9	-.7	2.0
<b>Commodity and service group</b>										
Commodities .....	169.920	169.875	171.236	171.666	-28.5	4.5	7.9	4.2	-13.6	6.0
Food and beverages .....	218.094	217.638	217.829	217.670	2.7	-.7	-1.3	-.8	1.0	-1.0
Commodities less food and beverages .....	144.765	144.891	146.689	147.347	-42.6	8.0	14.2	7.3	-21.3	10.7
Nondurables less food and beverages .....	179.090	179.986	185.567	186.349	-60.0	13.9	21.0	17.2	-32.5	19.1
Apparel .....	120.183	120.865	120.756	120.931	-4.6	5.3	1.5	2.5	.2	2.0
Nondurables less food, beverages, and apparel .....	220.257	220.790	230.120	231.087	-69.9	16.8	30.7	21.2	-40.7	25.8
Durables .....	109.957	109.926	109.238	109.714	-5.1	.2	3.5	-.9	-2.5	1.3
Services .....	258.780	258.833	259.344	259.617	.8	.8	.3	1.3	.8	.8
Rent of shelter <sup>4</sup> .....	260.267	259.779	260.033	260.233	1.3	.1	1.4	-.1	.7	.7
Tenants' and household insurance <sup>1 2</sup> .....	121.083	121.298	121.830	122.170	.3	2.4	1.2	3.6	1.3	2.4
Gas (piped) and electricity <sup>3</sup> .....	189.362	188.839	188.839	188.979	-4.7	-8.5	-18.5	-.8	-6.6	-10.1
Water and sewer and trash collection services <sup>2</sup> .....	160.401	161.408	162.756	163.402	6.4	3.0	6.7	7.7	4.7	7.2
Household operations <sup>1 2</sup> .....	149.995	149.983	150.494	150.437	1.3	.6	-2.4	1.2	1.0	-.6
Transportation services .....	248.652	249.855	251.455	253.146	-2.0	2.4	.4	7.4	.2	3.9
Medical care services .....	396.846	397.947	398.742	400.180	2.2	3.6	3.8	3.4	2.9	3.6
Other services .....	303.902	304.916	305.733	305.795	2.4	2.9	2.2	2.5	2.7	2.4
<b>Special indexes</b>										
All items less food .....	213.936	214.037	215.123	215.582	-14.6	2.7	4.1	3.1	-6.4	3.6
All items less shelter .....	202.989	203.183	204.437	204.951	-18.2	2.9	4.2	3.9	-8.2	4.1
All items less medical care .....	206.490	206.476	207.422	207.735	-13.3	2.0	3.3	2.4	-5.9	2.9
Commodities less food .....	147.413	147.555	149.315	149.975	-41.2	7.6	13.6	7.1	-20.4	10.3
Nondurables less food .....	181.572	182.401	187.699	188.493	-57.2	12.7	19.6	16.1	-30.6	17.8
Nondurables less food and apparel .....	219.267	219.772	228.214	229.166	-66.3	15.0	27.5	19.3	-37.8	23.3
Nondurables .....	198.515	198.640	201.800	202.076	-34.9	5.7	8.5	7.4	-17.1	7.9
Services less rent of shelter <sup>4</sup> .....	276.247	276.955	277.946	278.770	1.0	.7	-1.6	3.7	.9	1.0
Services less medical care services .....	247.530	247.503	248.063	248.397	1.2	.2	-.4	1.4	.7	.5
Energy .....	191.584	190.905	199.667	200.959	-76.7	7.9	22.1	21.1	-49.9	21.6
All items less energy .....	218.507	218.588	218.743	219.012	.5	1.7	1.8	.9	1.1	1.4
All items less food and energy .....	219.344	219.543	219.692	220.053	.2	2.2	2.4	1.3	1.2	1.9
Commodities less food and energy commodities .....	142.300	142.612	142.179	142.624	-2.4	3.8	4.1	.9	.7	2.5
Energy commodities .....	206.131	205.261	222.805	225.260	-92.8	29.1	79.3	42.6	-69.4	59.9
Services less energy services .....	265.873	265.982	266.543	266.830	1.2	1.5	1.8	1.4	1.4	1.6

<sup>1</sup> Not seasonally adjusted.

<sup>2</sup> Indexes on a December 1997=100 base.

<sup>3</sup> This index series was calculated using a Laspeyres estimator. All other item stratum index series were calculated using a geometric means estimator.

<sup>4</sup> Indexes on a December 1982=100 base.

<sup>5</sup> Indexes on a December 1988=100 base.

<sup>6</sup> Indexes on a December 2007=100 base.

NOTE: Index applies to a month as a whole, not to any specific date.

**Table 3. Consumer Price Index for All Urban Consumers (CPI-U): Selected areas, all items index**

(1982-84=100, unless otherwise noted)

CPI-U	Pricing schedule 1	All items									
		Indexes				Percent change to Sep.2009 from—			Percent change to Aug.2009 from—		
		June 2009	July 2009	Aug. 2009	Sep. 2009	Sep. 2008	July 2009	Aug. 2009	Aug. 2008	June 2009	July 2009
U.S. city average .....	M	215.693	215.351	215.834	215.969	-1.3	0.3	0.1	-1.5	0.1	0.2
<b>Region and area size<sup>2</sup></b>											
Northeast urban .....	M	229.930	230.154	230.883	231.200	-7	.5	.1	-1.2	.4	.3
Size A - More than 1,500,000 .....	M	232.058	232.416	233.314	233.695	-7	.6	.2	-1.2	.5	.4
Size B/C - 50,000 to 1,500,000 <sup>3</sup> .....	M	136.488	136.417	136.598	136.691	-7	.2	.1	-1.4	.1	.1
Midwest urban .....	M	205.350	204.814	205.632	205.601	-1.7	.4	.0	-1.8	.1	.4
Size A - More than 1,500,000 .....	M	206.308	205.656	206.591	206.459	-1.8	.4	-.1	-1.8	.1	.5
Size B/C - 50,000 to 1,500,000 <sup>3</sup> .....	M	131.640	131.366	131.748	131.812	-1.6	.3	.0	-1.7	.1	.3
Size D - Nonmetropolitan (less than 50,000) .....	M	201.157	200.908	201.823	201.918	-1.8	.5	.0	-2.1	.3	.5
South urban .....	M	209.343	208.819	209.000	208.912	-1.8	.0	.0	-1.6	-.2	.1
Size A - More than 1,500,000 .....	M	211.390	211.034	211.436	211.212	-1.7	.1	-.1	-1.4	.0	.2
Size B/C - 50,000 to 1,500,000 <sup>3</sup> .....	M	133.056	132.736	132.729	132.722	-1.8	.0	.0	-1.7	-.2	.0
Size D - Nonmetropolitan (less than 50,000) .....	M	211.815	210.491	210.899	210.911	-2.0	.2	.0	-1.7	-.4	.2
West urban .....	M	219.865	219.484	219.884	220.294	-.8	.4	.2	-1.3	.0	.2
Size A - More than 1,500,000 .....	M	223.908	223.498	224.072	224.412	-.7	.4	.2	-1.1	.1	.3
Size B/C - 50,000 to 1,500,000 <sup>3</sup> .....	M	132.952	132.774	132.756	133.128	-1.3	.3	.3	-1.8	-.1	.0
<b>Size classes</b>											
A <sup>4</sup> .....	M	197.214	196.987	197.614	197.724	-1.1	.4	.1	-1.3	.2	.3
B/C <sup>3</sup> .....	M	133.220	132.975	133.069	133.165	-1.5	.1	.1	-1.7	-.1	.1
D .....	M	208.543	207.784	208.369	208.503	-1.5	.3	.1	-1.8	-.1	.3
<b>Selected local areas<sup>5</sup></b>											
Chicago-Gary-Kenosha, IL-IN-WI .....	M	211.010	210.906	211.441	211.345	-1.9	.2	.0	-2.1	.2	.3
Los Angeles-Riverside-Orange County, CA ...	M	223.906	224.010	224.507	225.226	-1.0	.5	.3	-1.7	.3	.2
New York-Northern N.J.-Long Island, NY-NJ-CT-PA .....	M	237.172	237.600	238.282	238.568	-.6	.4	.1	-.9	.5	.3
Boston-Brockton-Nashua, MA-NH-ME-CT ....	1	-	233.018	-	236.596	-.8	1.5	-	-	-	-
Cleveland-Akron, OH .....	1	-	200.558	-	201.836	-2.1	.6	-	-	-	-
Dallas-Fort Worth, TX .....	1	-	200.663	-	201.802	-2.0	.6	-	-	-	-
Washington-Baltimore, DC-MD-VA-WV <sup>6</sup> .....	1	-	140.810	-	140.945	-.8	.1	-	-	-	-
Atlanta, GA .....	2	203.585	-	203.351	-	-	-	-	-3.8	-.1	-
Detroit-Ann Arbor-Flint, MI .....	2	204.537	-	204.673	-	-	-	-	-2.3	.1	-
Houston-Galveston-Brazoria, TX .....	2	192.325	-	191.687	-	-	-	-	-.5	-.3	-
Miami-Fort Lauderdale, FL .....	2	221.485	-	221.306	-	-	-	-	-1.8	-.1	-
Philadelphia-Wilmington-Atlantic City, PA-NJ-DE-MD .....	2	223.810	-	226.039	-	-	-	-	-1.0	1.0	-
San Francisco-Oakland-San Jose, CA .....	2	225.692	-	225.801	-	-	-	-	.2	.0	-
Seattle-Tacoma-Bremerton, WA .....	2	227.257	-	227.138	-	-	-	-	-.3	-.1	-

<sup>1</sup> Foods, fuels, and several other items priced every month in all areas; most other goods and services priced as indicated:

M - Every month.

1 - January, March, May, July, September, and November.

2 - February, April, June, August, October, and December.

<sup>2</sup> Regions defined as the four Census regions. See technical notes.

<sup>3</sup> Indexes on a December 1996=100 base.

<sup>4</sup> Indexes on a December 1986=100 base.

<sup>5</sup> In addition, the following metropolitan areas are published semiannually and appear in Tables 34 and 39 of the January and July issues of the CPI Detailed Report: Anchorage, AK; Cincinnati-Hamilton, OH-KY-IN; Denver-Boulder-Greeley, CO; Honolulu, HI; Kansas City, MO-KS; Milwaukee-Racine, WI; Minneapolis-St. Paul, MN-WI; Phoenix-Mesa, AZ; Pittsburgh, PA; Portland-Salem, OR-WA; St. Louis, MO-IL; San Diego, CA;

Tampa-St. Petersburg-Clearwater, FL.

<sup>6</sup> Indexes on a November 1996=100 base.

- Data not available.

NOTE: Local area indexes are byproducts of the national CPI program. Each local index has a smaller sample size than the national index and is, therefore, subject to substantially more sampling and other measurement error. As a result, local area indexes show greater volatility than the national index, although their long-term trends are similar. Therefore, the Bureau of Labor Statistics strongly urges users to consider adopting the national average CPI for use in their escalator clauses.

NOTE: Index applies to a month as a whole, not to any specific date.

**Table 4. Consumer Price Index for Urban Wage Earners and Clerical Workers (CPI-W): U.S. city average, by expenditure category and commodity and service group**

(1982-84=100, unless otherwise noted)

CPI-W Expenditure category	Relative importance, December 2008	Unadjusted indexes		Unadjusted percent change to Sep. 2009 from—		Seasonally adjusted percent change from—		
		Aug. 2009	Sep. 2009	Sep. 2008	Aug. 2009	June to July	July to Aug.	Aug. to Sep.
All items .....	100.000	211.156	211.322	-1.7	0.1	0.0	0.6	0.2
All items (1967=100) .....	-	628.970	629.462	-	-	-	-	-
Food and beverages .....	16.942	216.957	216.734	-.2	-.1	-.2	.1	-.1
Food .....	15.865	216.539	216.313	-.4	-.1	-.3	.1	-.1
Food at home .....	9.201	212.623	212.010	-2.6	-.3	-5.0	.0	-.3
Cereals and bakery products .....	1.249	252.932	251.754	.1	-.5	-.1	-.1	.2
Meats, poultry, fish, and eggs .....	2.315	202.483	201.087	-4.0	-.7	-1.3	.4	-1.1
Dairy and related products <sup>1</sup> .....	.992	191.048	192.048	-9.8	.5	-6.6	-.4	.5
Fruits and vegetables .....	1.266	265.730	265.810	-6.6	.0	-.1	-.9	-1.1
Nonalcoholic beverages and beverage materials .....	1.167	162.433	162.396	1.0	.0	-.4	.3	.0
Other food at home .....	2.212	190.704	189.892	1.3	-.4	-.3	.3	.0
Sugar and sweets .....	.304	194.511	196.027	3.8	.8	-1.4	.5	1.0
Fats and oils .....	.274	201.199	200.621	-3.1	-.3	-.4	.1	-.3
Other foods .....	1.634	206.210	204.823	1.6	-.7	-.1	.3	-.1
Other miscellaneous foods <sup>1 2</sup> .....	.472	122.217	122.496	.7	.2	-.3	.1	.2
Food away from home <sup>1</sup> .....	6.664	223.789	224.102	2.7	.1	.1	.2	.1
Other food away from home <sup>1 2</sup> .....	.233	156.769	157.132	3.8	.2	1.2	-.1	.2
Alcoholic beverages .....	1.077	221.618	221.454	2.7	-.1	.4	.2	.0
Housing .....	41.313	213.824	213.391	-.3	-.2	-.1	.0	.0
Shelter .....	31.224	243.279	242.816	1.1	-.2	-.1	.1	.0
Rent of primary residence <sup>3</sup> .....	8.279	247.601	247.500	1.5	.0	.0	.0	-.1
Lodging away from home <sup>2</sup> .....	1.209	138.543	134.803	-5.5	-2.7	-1.6	.2	1.5
Owners' equivalent rent of primary residence <sup>3 4</sup> .....	21.430	232.977	232.731	1.3	-.1	.0	.1	-.1
Tenants' and household insurance <sup>1 2</sup> .....	.306	122.254	122.644	2.0	.3	.2	.4	.3
Fuels and utilities .....	6.030	211.808	210.796	-7.0	-.5	-.1	.3	.3
Household energy .....	4.996	188.125	186.967	-9.5	-.6	-.3	.1	.2
Fuel oil and other fuels .....	.283	239.435	238.006	-31.2	-.6	-1.1	3.7	.8
Gas (piped) and electricity <sup>3</sup> .....	4.713	194.211	193.013	-7.8	-.6	-.2	-.1	.2
Water and sewer and trash collection services <sup>2</sup> .....	1.035	163.567	163.808	5.9	.1	.6	.9	.4
Household furnishings and operations .....	4.059	124.219	124.351	-.1	.1	-.1	-.6	.2
Household operations <sup>1 2</sup> .....	.360	153.667	153.648	.5	.0	-.1	.7	.0
Apparel .....	3.979	117.095	122.176	1.0	4.3	.6	.0	.2
Men's and boys' apparel .....	1.024	111.629	113.682	.6	1.8	-.4	.7	-.7
Women's and girls' apparel .....	1.568	103.727	112.086	-.2	8.1	1.3	-.2	.7
Infants' and toddlers' apparel .....	.249	116.482	119.075	2.9	2.2	-.6	.8	.3
Footwear .....	.840	125.880	128.988	3.3	2.5	1.0	-.2	-.1
Transportation .....	17.067	182.541	182.024	-11.1	-.3	.1	2.7	.8
Private transportation .....	16.284	179.368	178.801	-11.3	-.3	.0	2.8	.7
New and used motor vehicles <sup>2</sup> .....	7.627	91.129	91.599	.3	.5	.2	.1	.7
New vehicles .....	4.057	135.130	135.672	1.6	.4	.5	-1.3	.4
Used cars and trucks .....	2.863	128.781	130.122	-2.7	1.0	.0	1.9	1.5
Motor fuel .....	4.029	225.797	221.241	-30.1	-2.0	-.5	8.8	1.0
Gasoline (all types) .....	3.770	226.007	221.197	-29.9	-2.1	-.9	9.1	.8
Motor vehicle parts and equipment <sup>1</sup> .....	.482	133.587	133.504	1.9	-.1	-.4	-.1	-.1
Motor vehicle maintenance and repair <sup>1</sup> .....	1.242	245.871	246.850	3.0	.4	.1	.2	.4
Public transportation .....	.784	237.029	238.225	-7.7	.5	2.0	1.2	1.9
Medical care .....	5.355	377.007	378.263	3.6	.3	.2	.3	.5
Medical care commodities .....	1.320	297.379	299.098	4.1	.6	-.2	.5	.6
Medical care services .....	4.035	400.204	401.217	3.4	.3	.3	.2	.4
Professional services .....	2.234	322.964	323.577	2.7	.2	.1	.1	.4
Hospital and related services <sup>3</sup> .....	1.338	567.545	570.697	6.8	.6	.7	.6	.7

See footnotes at end of table.

**Table 4. Consumer Price Index for Urban Wage Earners and Clerical Workers (CPI-W): U.S. city average, by expenditure category and commodity and service group-Continued**

(1982-84=100, unless otherwise noted)

CPI-W Expenditure category	Relative importance, December 2008	Unadjusted indexes		Unadjusted percent change to Sep. 2009 from—		Seasonally adjusted percent change from—			
		Aug. 2009	Sep. 2009	Sep. 2008	Aug. 2009	June to July	July to Aug.	Aug. to Sep.	
Recreation <sup>2</sup> .....	5.454	111.453	111.205	0.3	-0.2	0.0	0.0	-0.2	
Video and audio <sup>2</sup> .....	1.982	101.867	101.228	-1.5	-6	-1	-2	-7	
Education and communication <sup>2</sup> .....	6.221	123.579	124.322	2.4	.6	.3	.1	.1	
Education <sup>2</sup> .....	2.527	190.222	192.552	4.9	1.2	.6	.4	.0	
Educational books and supplies .....	.219	493.615	496.691	6.7	.6	1.3	.4	.4	
Tuition, other school fees, and childcare .....	2.308	534.825	541.688	4.7	1.3	.5	.5	.0	
Communication <sup>2</sup> .....	3.694	87.667	87.810	.7	.2	.1	-.1	.2	
Information and information processing <sup>1 2</sup> .....	3.568	85.532	85.676	.5	.2	.2	-.1	.2	
Telephone services <sup>1 2</sup> .....	2.965	102.613	102.896	1.5	.3	.4	.0	.3	
Information technology, hardware and services <sup>1 5</sup> .....	.604	10.012	9.975	-4.2	-4	-1.2	-1.0	-4	
Personal computers and peripheral equipment <sup>1 6</sup> .....	.202	78.480	77.835	-14.2	-8	-3.1	-2.8	-8	
Other goods and services .....	3.668	398.228	400.245	10.8	.5	1.0	.1	.4	
Tobacco and smoking products <sup>1</sup> .....	1.267	768.483	776.198	29.3	1.0	2.1	.1	1.0	
Personal care .....	2.401	202.221	202.576	1.1	.2	.2	.1	.0	
Personal care products <sup>1</sup> .....	.662	162.415	162.312	1.6	-.1	.4	-.2	-.1	
Personal care services <sup>1</sup> .....	.580	227.751	228.480	1.6	.3	-.1	.1	.3	
Miscellaneous personal services .....	.947	347.402	347.658	.7	.1	.4	.3	-.1	
<b>Commodity and service group</b>									
Commodities .....	42.689	173.379	173.777	-4.9	.2	.0	1.0	.3	
Food and beverages .....	16.942	216.957	216.734	-.2	-.1	-.2	.1	-.1	
Commodities less food and beverages .....	25.747	150.209	150.851	-7.4	.4	.1	1.6	.6	
Nondurables less food and beverages .....	14.587	192.365	193.225	-11.3	.4	.3	3.5	.4	
Apparel .....	3.979	117.095	122.176	1.0	4.3	.6	.0	.2	
Nondurables less food, beverages, and apparel .....	10.609	243.461	241.657	-14.6	-.7	.2	4.7	.4	
Durables .....	11.160	109.039	109.470	-.9	.4	.0	-.3	.6	
Services .....	57.311	255.342	255.244	.9	.0	.1	.2	.1	
Rent of shelter <sup>4</sup> .....	30.918	234.537	234.079	1.1	-.2	-.1	.1	.0	
Tenants' and household insurance <sup>1 2</sup> .....	.306	122.254	122.644	2.0	.3	.2	.4	.3	
Gas (piped) and electricity <sup>3</sup> .....	4.713	194.211	193.013	-7.8	-.6	-.2	-.1	.2	
Water and sewer and trash collection services <sup>2</sup> .....	1.035	163.567	163.808	5.9	.1	.6	.9	.4	
Household operations <sup>1 2</sup> .....	.360	153.667	153.648	.5	.0	-.1	.7	.0	
Transportation services .....	5.512	251.880	252.805	2.9	.4	.4	.6	.6	
Medical care services .....	4.035	400.204	401.217	3.4	.3	.3	.2	.4	
Other services .....	10.432	293.266	294.190	2.2	.3	.4	.2	.0	
<b>Special indexes</b>									
All items less food .....	84.135	210.021	210.255	-1.9	.1	.1	.6	.2	
All items less shelter .....	68.776	201.726	202.123	-2.9	.2	.1	.8	.3	
All items less medical care .....	94.645	204.341	204.472	-2.0	.1	.0	.6	.2	
Commodities less food .....	26.824	152.606	153.229	-7.1	.4	.1	1.6	.5	
Nondurables less food .....	15.664	194.170	194.978	-10.6	.4	.3	3.3	.3	
Nondurables less food and apparel .....	11.686	240.515	238.857	-13.5	-.7	.2	4.3	.4	
Nondurables .....	31.530	205.017	205.374	-6.1	.2	.0	1.8	.1	
Services less rent of shelter <sup>4</sup> .....	26.392	247.308	247.664	.8	.1	.2	.4	.3	
Services less medical care services .....	53.275	244.857	244.707	.8	-.1	.0	.2	.1	
Energy .....	9.024	205.144	202.287	-22.2	-1.4	-.4	4.8	.6	
All items less energy .....	90.976	212.823	213.363	1.4	.3	.1	.1	.1	
All items less food and energy .....	75.111	212.449	213.144	1.8	.3	.1	.1	.2	
Commodities less food and energy commodities .....	22.513	142.634	144.148	1.9	1.1	.3	-.1	.4	
Energy commodities .....	4.311	227.506	223.048	-30.2	-2.0	-.5	8.6	1.0	
Services less energy services .....	52.598	261.960	261.990	1.8	.0	.1	.2	.1	
Purchasing power of the consumer dollar (1982-84=\$1.00) .....	-	\$ .474	\$ .473	-	-	-	-	-	
Purchasing power of the consumer dollar (1967=\$1.00) .....	-	\$ .159	\$ .159	-	-	-	-	-	

<sup>1</sup> Not seasonally adjusted.

<sup>2</sup> Indexes on a December 1997=100 base.

<sup>3</sup> This index series was calculated using a Laspeyres estimator. All other item stratum index series were calculated using a geometric means estimator.

<sup>4</sup> Indexes on a December 1984=100 base

<sup>5</sup> Indexes on a December 1988=100 base.

<sup>6</sup> Indexes on a December 2007=100 base.

- Data not available.

NOTE: Index applies to a month as a whole, not to any specific date.

**Table 5. Consumer Price Index for Urban Wage Earners and Clerical Workers (CPI-W): Seasonally adjusted U.S. city average, by expenditure category and commodity and service group**

(1982-84=100, unless otherwise noted)

Expenditure category	Seasonally adjusted indexes				Seasonally adjusted annual rate percent change for					
					3 months ended—			6 months ended—		
	June 2009	July 2009	Aug. 2009	Sep. 2009	Dec. 2008	Mar. 2009	June 2009	Sep. 2009	Mar. 2009	Sep. 2009
<b>All items</b> .....	209.534	209.598	210.758	211.136	-15.3	2.6	4.2	3.1	-6.8	3.6
Food and beverages .....	217.312	216.821	217.045	216.778	2.8	-1.1	-1.4	-1.0	.9	-1.2
Food .....	216.977	216.395	216.610	216.317	2.6	-1.1	-1.6	-1.2	.7	-1.4
Food at home .....	213.806	212.646	212.744	212.018	.9	-3.9	-3.9	-3.3	-1.5	-3.6
Cereals and bakery products .....	252.211	251.916	251.677	252.195	7.4	-2.9	-3.6	.0	2.1	-1.8
Meats, poultry, fish, and eggs .....	203.845	201.245	202.128	199.912	.5	-4.4	-4.5	-7.5	-2.0	-6.0
Dairy and related products <sup>1</sup> .....	192.898	191.783	191.048	192.048	-5.4	-20.8	-10.0	-1.8	-13.4	-6.0
Fruits and vegetables .....	273.813	273.468	270.988	268.099	-15.1	-4.1	1.5	-8.1	-9.8	-3.4
Nonalcoholic beverages and beverage materials .....	162.608	161.977	162.465	162.444	6.9	2.4	-4.7	-4	4.6	-2.6
Other food at home .....	190.000	189.366	189.945	189.934	7.9	1.3	-3.5	-.1	4.5	-1.9
Sugar and sweets .....	195.695	193.001	194.039	195.992	9.4	6.4	-1.0	.6	7.9	-2
Fats and oils .....	201.926	201.077	201.203	200.499	7.4	-11.1	-5.1	-2.8	-2.3	-3.9
Other foods .....	204.831	204.578	205.196	204.911	7.7	2.5	-3.8	.2	5.1	-1.8
Other miscellaneous foods <sup>1 2</sup> .....	122.537	122.119	122.217	122.496	8.7	-4.1	-1.0	-.1	2.1	-6
Food away from home <sup>1</sup> .....	223.186	223.408	223.789	224.102	5.0	2.7	1.5	1.7	3.9	1.6
Other food away from home <sup>1 2</sup> .....	155.091	156.904	156.769	157.132	6.3	1.1	2.7	5.4	3.6	4.0
Alcoholic beverages .....	220.755	221.612	221.978	222.073	6.1	-1	2.3	2.4	3.0	2.4
Housing .....	212.972	212.765	212.823	212.863	.0	-1	-9	-.2	.0	-6
Shelter .....	243.100	242.884	243.044	242.930	1.8	1.5	1.4	-.3	1.7	.6
Rent of primary residence <sup>3</sup> .....	247.966	247.880	247.869	247.669	2.9	2.4	1.3	-.5	2.7	.4
Lodging away from home <sup>2</sup> .....	135.271	133.136	133.451	135.480	-6.4	-18.4	3.9	.6	-12.6	2.2
Owners' equivalent rent of primary residence <sup>3 4</sup> .....	232.942	232.879	233.061	232.761	1.9	2.5	1.3	-.3	2.2	.5
Tenants' and household insurance <sup>1 2</sup> .....	121.529	121.765	122.254	122.644	.3	2.5	1.4	3.7	1.4	2.6
Fuels and utilities .....	205.493	205.268	205.839	206.356	-8.2	-8.6	-13.5	1.7	-8.4	-6.2
Household energy .....	181.978	181.483	181.747	182.153	-10.8	-10.8	-17.4	.4	-10.8	-8.9
Fuel oil and other fuels .....	227.677	225.175	233.552	235.480	-63.1	-37.4	-15.2	14.4	-51.9	-1.5
Gas (piped) and electricity <sup>3</sup> .....	188.044	187.619	187.525	187.880	-5.3	-9.0	-17.5	-.3	-7.2	-9.3
Water and sewer and trash collection services <sup>2</sup> .....	160.813	161.801	163.201	163.808	6.5	3.0	6.7	7.7	4.7	7.2
Household furnishings and operations .....	125.313	125.131	124.347	124.592	-.3	1.2	.9	-2.3	.5	-.7
Household operations <sup>1 2</sup> .....	152.658	152.577	153.667	153.648	-.1	1.1	-1.5	2.6	.5	.5
Apparel .....	119.963	120.666	120.672	120.949	-6.0	5.4	1.6	3.3	-.5	2.5
Men's and boys' apparel .....	114.537	114.086	114.936	114.131	-5.2	18.2	-7.2	-1.4	5.9	-4.4
Women's and girls' apparel .....	107.602	109.019	108.852	109.649	-13.2	.7	5.4	7.8	-6.5	6.6
Infants' and toddlers' apparel .....	118.686	117.941	118.857	119.258	-.9	.3	10.5	1.9	-.3	6.2
Footwear .....	127.062	128.313	128.063	127.912	2.4	4.3	3.8	2.7	3.3	3.3
Transportation .....	176.300	176.456	181.285	182.716	-59.7	8.8	22.9	15.4	-33.8	19.1
Private transportation .....	173.329	173.340	178.196	179.519	-60.8	10.1	24.4	15.1	-34.3	19.7
New and used motor vehicles <sup>2</sup> .....	90.664	90.888	90.936	91.560	-7.2	-.7	5.7	4.0	-4.0	4.8
New vehicles .....	137.234	137.855	136.112	136.675	-5.0	7.4	6.3	-1.6	1.0	2.3
Used cars and trucks .....	124.559	124.569	126.950	128.878	-13.7	-15.6	7.6	14.6	-14.7	11.0
Motor fuel .....	204.503	203.579	221.467	223.652	-93.6	37.7	87.8	43.1	-70.2	63.9
Gasoline (all types) .....	205.099	203.341	221.758	223.578	-93.9	47.5	91.6	41.2	-70.1	64.5
Motor vehicle parts and equipment <sup>1</sup> .....	134.273	133.787	133.587	133.504	7.0	3.6	-.6	-2.3	5.3	-1.5
Motor vehicle maintenance and repair <sup>1</sup> .....	245.129	245.421	245.871	246.850	3.9	4.7	.8	2.8	4.3	1.8
Public transportation .....	226.048	230.677	233.494	237.928	-24.5	-15.7	-7.1	22.7	-20.2	6.8
Medical care .....	375.650	376.321	377.444	379.213	2.5	4.1	3.8	3.8	3.3	3.8
Medical care commodities .....	296.547	296.084	297.712	299.487	3.9	5.3	3.1	4.0	4.6	3.6
Medical care services .....	398.660	399.808	400.673	402.384	2.1	3.7	4.0	3.8	2.9	3.9
Professional services .....	322.098	322.537	322.955	324.248	2.5	2.0	3.7	2.7	2.2	3.2
Hospital and related services <sup>3</sup> .....	562.806	566.848	570.031	573.743	3.5	9.2	6.5	8.0	6.3	7.3

See footnotes at end of table.



**Table 5. Consumer Price Index for Urban Wage Earners and Clerical Workers (CPI-W): Seasonally adjusted U.S. city average, by expenditure category and commodity and service group-Continued**

(1982-84=100, unless otherwise noted)

CPI-W Expenditure category	Seasonally adjusted indexes				Seasonally adjusted annual rate percent change for					
	June 2009	July 2009	Aug. 2009	Sep. 2009	3 months ended—			6 months ended—		
					Dec. 2008	Mar. 2009	June 2009	Sep. 2009	Mar. 2009	Sep. 2009
Recreation <sup>2</sup> .....	111.423	111.418	111.415	111.147	-0.2	1.9	0.4	-1.0	0.9	-0.3
Video and audio <sup>2</sup> .....	102.220	102.121	101.924	101.243	-2.0	-2.2	1.9	-3.8	-2.1	-1.0
Education and communication <sup>2</sup> .....	122.940	123.348	123.479	123.601	2.8	2.2	2.2	2.2	2.5	2.2
Education <sup>2</sup> .....	187.894	189.018	189.859	189.872	5.5	4.5	5.3	4.3	5.0	4.8
Educational books and supplies .....	483.813	490.109	491.859	493.984	4.4	4.5	9.2	8.7	4.5	8.9
Tuition, other school fees, and childcare .....	528.674	531.480	533.890	533.704	5.6	4.4	4.9	3.9	5.0	4.4
Communication <sup>2</sup> .....	87.650	87.778	87.664	87.807	1.1	.8	.2	.7	.9	.4
Information and information processing <sup>1 2</sup> .....	85.524	85.653	85.532	85.676	1.2	.7	-.3	.7	.9	.2
Telephone services <sup>1 2</sup> .....	102.153	102.587	102.613	102.896	1.5	1.0	.7	2.9	1.2	1.8
Information technology, hardware and services <sup>1 5</sup> .....	10.238	10.113	10.012	9.975	-.3	-1.1	-5.3	-9.9	-.7	-7.6
Personal computers and peripheral equipment <sup>1 6</sup> .....	83.278	80.736	78.480	77.835	-10.8	-9.5	-12.1	-23.7	-10.1	-18.1
Other goods and services .....	394.708	398.522	398.801	400.504	2.2	19.5	16.6	6.0	10.5	11.2
Tobacco and smoking products <sup>1</sup> .....	752.078	768.005	768.483	776.198	3.6	60.9	47.8	13.5	29.1	29.5
Personal care .....	202.115	202.553	202.705	202.795	1.4	1.2	.6	1.4	1.3	1.0
Personal care products <sup>1</sup> .....	162.165	162.767	162.415	162.312	4.0	3.1	-.9	.4	3.5	-.3
Personal care services <sup>1</sup> .....	227.800	227.512	227.751	228.480	3.0	2.9	-.7	1.2	2.9	.2
Miscellaneous personal services .....	345.423	346.809	347.691	347.345	-1.2	-.2	2.0	2.2	-.7	2.1
<b>Commodity and service group</b>										
Commodities .....	171.618	171.568	173.366	173.885	-32.5	4.8	9.6	5.4	-15.9	7.5
Food and beverages .....	217.312	216.821	217.045	216.778	2.8	-1.1	-1.4	-1.0	.9	-1.2
Commodities less food and beverages .....	147.626	147.760	150.154	150.983	-47.5	8.8	17.1	9.4	-24.4	13.2
Nondurables less food and beverages .....	186.685	187.184	193.645	194.337	-64.9	17.5	27.7	17.4	-35.7	22.4
Apparel .....	119.963	120.666	120.672	120.949	-6.0	5.4	1.6	3.3	-.5	2.5
Nondurables less food, beverages, and apparel .....	231.872	232.430	243.283	244.219	-74.2	21.8	37.4	23.1	-43.9	30.0
Durables .....	109.361	109.321	108.994	109.657	-6.5	-2.0	4.2	1.1	-4.3	2.6
Services .....	253.882	254.063	254.480	254.679	1.2	1.1	.1	1.3	1.2	.7
Rent of shelter <sup>4</sup> .....	234.253	234.008	234.179	234.254	2.0	1.0	1.3	.0	1.5	.7
Tenants' and household insurance <sup>1 2</sup> .....	121.529	121.765	122.254	122.644	.3	2.5	1.4	3.7	1.4	2.6
Gas (piped) and electricity <sup>3</sup> .....	188.044	187.619	187.525	187.880	-5.3	-9.0	-17.5	-.3	-7.2	-9.3
Water and sewer and trash collection services <sup>2</sup> .....	160.813	161.801	163.201	163.808	6.5	3.0	6.7	7.7	4.7	7.2
Household operations <sup>1 2</sup> .....	152.658	152.577	153.667	153.648	-.1	1.1	-1.5	2.6	.5	.5
Transportation services .....	249.202	250.263	251.654	253.079	.0	3.6	1.7	6.4	1.8	4.0
Medical care services .....	398.660	399.808	400.673	402.384	2.1	3.7	4.0	3.8	2.9	3.9
Other services .....	291.473	292.500	293.179	293.119	2.3	2.5	1.8	2.3	2.4	2.1
<b>Special indexes</b>										
All items less food .....	208.040	208.216	209.541	210.036	-18.3	3.3	5.3	3.9	-8.1	4.6
All items less shelter .....	199.559	199.725	201.265	201.826	-21.9	3.1	5.4	4.6	-10.3	5.0
All items less medical care .....	202.725	202.769	203.921	204.253	-16.2	2.5	4.2	3.0	-7.3	3.6
Commodities less food .....	150.057	150.211	152.561	153.374	-46.1	8.4	16.5	9.1	-23.6	12.8
Nondurables less food .....	188.704	189.232	195.417	196.084	-62.5	16.3	25.7	16.6	-33.9	21.1
Nondurables less food and apparel .....	229.919	230.427	240.380	241.279	-71.2	19.7	34.0	21.3	-41.3	27.5
Nondurables .....	202.033	201.960	205.614	205.775	-39.5	7.3	11.2	7.6	-19.4	9.4
Services less rent of shelter <sup>4</sup> .....	244.247	244.854	245.730	246.381	.9	.4	-1.8	3.5	.7	.9
Services less medical care services .....	243.257	243.332	243.823	244.068	1.6	.5	-.4	1.3	1.0	.5
Energy .....	191.437	190.731	199.863	201.160	-78.5	9.5	25.8	21.9	-51.5	23.9
All items less energy .....	212.687	212.846	213.027	213.292	.7	1.9	2.1	1.1	1.3	1.6
All items less food and energy .....	212.196	212.505	212.680	213.059	.2	2.6	2.9	1.6	1.4	2.2
Commodities less food and energy commodities .....	143.218	143.589	143.376	143.992	-3.3	3.7	5.4	2.2	.1	3.8
Energy commodities .....	206.474	205.483	223.093	225.279	-93.0	31.6	80.9	41.7	-69.6	60.1
Services less energy services .....	261.053	261.304	261.781	261.962	1.8	2.1	1.8	1.4	2.0	1.6

<sup>1</sup> Not seasonally adjusted.

<sup>2</sup> Indexes on a December 1997=100 base.

<sup>3</sup> This index series was calculated using a Laspeyres estimator. All other item stratum index series were calculated using a geometric means estimator.

<sup>4</sup> Indexes on a December 1984=100 base

<sup>5</sup> Indexes on a December 1988=100 base.

<sup>6</sup> Indexes on a December 2007=100 base.

NOTE: Index applies to a month as a whole, not to any specific date.

**Table 6. Consumer Price Index for Urban Wage Earners and Clerical Workers (CPI-W): Selected areas, all items index**

(1982-84=100, unless otherwise noted)

CPI-W	Pricing schedule 1	All items									
		Indexes				Percent change to Sep.2009 from—			Percent change to Aug.2009 from—		
		June 2009	July 2009	Aug. 2009	Sep. 2009	Sep. 2008	July 2009	Aug. 2009	Aug. 2008	June 2009	July 2009
U.S. city average .....	M	210.972	210.526	211.156	211.322	-1.7	0.4	0.1	-1.9	0.1	0.3
<b>Region and area size<sup>2</sup></b>											
Northeast urban .....	M	226.695	226.714	227.598	228.158	-.8	.6	.2	-1.4	.4	.4
Size A - More than 1,500,000 .....	M	227.337	227.550	228.472	229.067	-.7	.7	.3	-1.3	.5	.4
Size B/C - 50,000 to 1,500,000 <sup>3</sup> .....	M	136.888	136.626	137.109	137.400	-1.1	.6	.2	-1.6	.2	.4
Midwest urban .....	M	200.487	199.824	200.723	200.658	-2.1	.4	.0	-2.1	.1	.4
Size A - More than 1,500,000 .....	M	200.356	199.611	200.710	200.566	-2.2	.5	-.1	-2.1	.2	.6
Size B/C - 50,000 to 1,500,000 <sup>3</sup> .....	M	131.554	131.096	131.481	131.497	-2.0	.3	.0	-2.1	-.1	.3
Size D - Nonmetropolitan (less than 50,000) .....	M	198.674	198.455	199.404	199.416	-2.3	.5	.0	-2.6	.4	.5
South urban .....	M	205.968	205.415	205.867	205.726	-2.3	.2	-.1	-2.1	.0	.2
Size A - More than 1,500,000 .....	M	208.909	208.492	208.995	208.677	-2.3	.1	-.2	-2.1	.0	.2
Size B/C - 50,000 to 1,500,000 <sup>3</sup> .....	M	131.382	131.063	131.302	131.284	-2.2	.2	.0	-2.1	-.1	.2
Size D - Nonmetropolitan (less than 50,000) .....	M	211.721	210.341	211.088	210.922	-2.7	.3	-.1	-2.3	-.3	.4
West urban .....	M	213.973	213.541	213.988	214.490	-1.2	.4	.2	-1.8	.0	.2
Size A - More than 1,500,000 .....	M	216.395	215.955	216.539	217.000	-1.0	.5	.2	-1.5	.1	.3
Size B/C - 50,000 to 1,500,000 <sup>3</sup> .....	M	132.517	132.314	132.407	132.773	-1.6	.3	.3	-2.3	-.1	.1
<b>Size classes</b>											
A <sup>4</sup> .....	M	195.414	195.096	195.796	195.957	-1.5	.4	.1	-1.7	.2	.4
B/C <sup>3</sup> .....	M	132.384	132.069	132.341	132.450	-1.9	.3	.1	-2.1	.0	.2
D .....	M	206.327	205.504	206.271	206.341	-2.1	.4	.0	-2.3	.0	.4
<b>Selected local areas<sup>5</sup></b>											
Chicago-Gary-Kenosha, IL-IN-WI .....	M	203.691	203.554	204.246	204.278	-2.3	.4	.0	-2.5	.3	.3
Los Angeles-Riverside-Orange County, CA ...	M	216.145	216.128	216.628	217.302	-1.4	.5	.3	-2.1	.2	.2
New York-Northern N.J.-Long Island, NY-NJ-CT-PA .....	M	231.916	232.177	232.841	233.502	-.5	.6	.3	-1.1	.4	.3
Boston-Brockton-Nashua, MA-NH-ME-CT ....	1	-	232.535	-	235.744	-1.0	1.4	-	-	-	-
Cleveland-Akron, OH .....	1	-	191.494	-	192.800	-2.3	.7	-	-	-	-
Dallas-Fort Worth, TX .....	1	-	203.075	-	204.298	-2.6	.6	-	-	-	-
Washington-Baltimore, DC-MD-VA-WV <sup>6</sup> .....	1	-	140.434	-	140.701	-.7	.2	-	-	-	-
Atlanta, GA .....	2	202.632	-	202.276	-	-	-	-	-4.2	-.2	-
Detroit-Ann Arbor-Flint, MI .....	2	199.977	-	200.169	-	-	-	-	-2.6	.1	-
Houston-Galveston-Brazoria, TX .....	2	189.979	-	189.503	-	-	-	-	-1.9	-.3	-
Miami-Fort Lauderdale, FL .....	2	219.091	-	219.000	-	-	-	-	-2.5	.0	-
Philadelphia-Wilmington-Atlantic City, PA-NJ-DE-MD .....	2	223.361	-	225.481	-	-	-	-	-1.2	.9	-
San Francisco-Oakland-San Jose, CA .....	2	220.996	-	221.279	-	-	-	-	.0	.1	-
Seattle-Tacoma-Bremerton, WA .....	2	221.993	-	221.873	-	-	-	-	-.6	-.1	-

<sup>1</sup> Foods, fuels, and several other items priced every month in all areas; most other goods and services priced as indicated:

M - Every month.

1 - January, March, May, July, September, and November.

2 - February, April, June, August, October, and December.

<sup>2</sup> Regions defined as the four Census regions. See technical notes.

<sup>3</sup> Indexes on a December 1996=100 base.

<sup>4</sup> Indexes on a December 1986=100 base.

<sup>5</sup> In addition, the following metropolitan areas are published semiannually and appear in Tables 34 and 39 of the January and July issues of the CPI Detailed Report: Anchorage, AK; Cincinnati-Hamilton, OH-KY-IN; Denver-Boulder-Greeley, CO; Honolulu, HI; Kansas City, MO-KS; Milwaukee-Racine, WI; Minneapolis-St. Paul, MN-WI; Phoenix-Mesa, AZ; Pittsburgh, PA; Portland-Salem, OR-WA; St. Louis, MO-IL; San Diego, CA;

Tampa-St. Petersburg-Clearwater, FL.

<sup>6</sup> Indexes on a November 1996=100 base.

- Data not available.

NOTE: Local area indexes are byproducts of the national CPI program. Each local index has a smaller sample size than the national index and is, therefore, subject to substantially more sampling and other measurement error. As a result, local area indexes show greater volatility than the national index, although their long-term trends are similar. Therefore, the Bureau of Labor Statistics strongly urges users to consider adopting the national average CPI for use in their escalator clauses.

NOTE: Index applies to a month as a whole, not to any specific date.

**Table 7. Chained Consumer Price Index for All Urban Consumers (C-CPI-U): U.S. city average, by expenditure category and commodity and service group**

(December 1999=100, unless otherwise noted)

<b>C-CPI-U</b>	Relative importance, 2005-2006	Unadjusted indexes		Unadjusted percent change to Sep. 2009 from—	
		Aug. 2009	Sep. 2009	Sep. 2008	Aug. 2009
<b>Expenditure category</b>					
All items .....	100.000	123.955	124.021	-1.4	0.1
Food and beverages .....	14.726	127.588	127.542	-.1	.0
Food .....	13.648	127.577	127.505	-.3	-.1
Food at home .....	7.557	122.743	122.477	-2.6	-.2
Food away from home .....	6.091	133.847	134.038	2.6	.1
Alcoholic beverages .....	1.077	128.076	128.371	2.5	.2
Housing .....	42.421	128.915	128.505	-.7	-.3
Shelter .....	32.409	131.803	131.413	.7	-.3
Fuels and utilities .....	5.004	155.255	154.183	-8.7	-.7
Household furnishings and operations .....	5.008	95.121	95.039	-.7	-.1
Apparel .....	3.988	86.232	90.302	.8	4.7
Transportation .....	17.393	123.872	123.573	-8.4	-.2
Private transportation .....	16.285	124.468	124.115	-8.4	-.3
Public transportation .....	1.108	116.847	117.307	-8.2	.4
Medical care .....	6.085	146.130	146.587	3.3	.3
Medical care commodities .....	1.615	129.138	129.938	4.0	.6
Medical care services .....	4.470	152.392	152.700	3.0	.2
Recreation .....	5.935	105.236	104.955	-.9	-.3
Education and communication .....	6.196	110.825	111.486	2.1	.6
Education .....	2.771	178.469	180.639	5.0	1.2
Communication .....	3.425	73.787	73.860	-.1	.1
Other goods and services .....	3.257	133.832	134.310	4.0	.4
<b>Commodity and service group</b>					
Services .....	58.427	134.454	134.306	.5	-.1
Commodities .....	41.573	111.158	111.473	-3.9	.3
Durables .....	11.817	80.544	80.658	-1.4	.1
Nondurables .....	29.756	127.059	127.490	-4.9	.3
All items less food and energy .....	77.561	118.763	119.059	1.1	.2
Energy .....	8.790	174.258	171.660	-21.8	-1.5

Indexes for 2009 are initial estimates. Indexes for 2008 are interim adjustments.  
NOTE: Index applies to a month as a whole, not to any specific date.