

Transmission of material in this release is embargoed until
8:30 a.m. (EST) Wednesday, November 10, 2010

USDL-10-1547

Technical information: (202) 691-7101 • MXPinfo@bls.gov • www.bls.gov/mxp
Media contact: (202) 691-5902 • PressOffice@bls.gov

U.S. IMPORT AND EXPORT PRICE INDEXES – OCTOBER 2010

U.S. import prices rose 0.9 percent in October, the U.S. Bureau of Labor Statistics reported today, after edging down 0.1 percent in September. Higher fuel and nonfuel prices contributed to the increase in October. Export prices advanced for the third consecutive month in October, rising 0.8 percent.

Chart 1. One-month percent change in the Import Price Index: October 2009 – October 2010

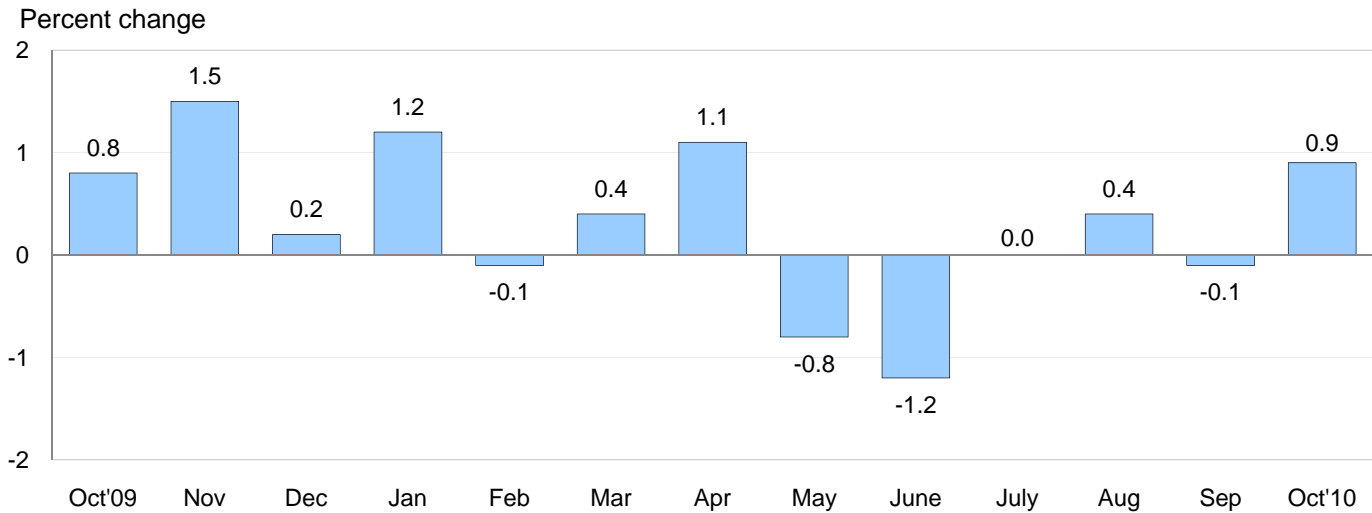
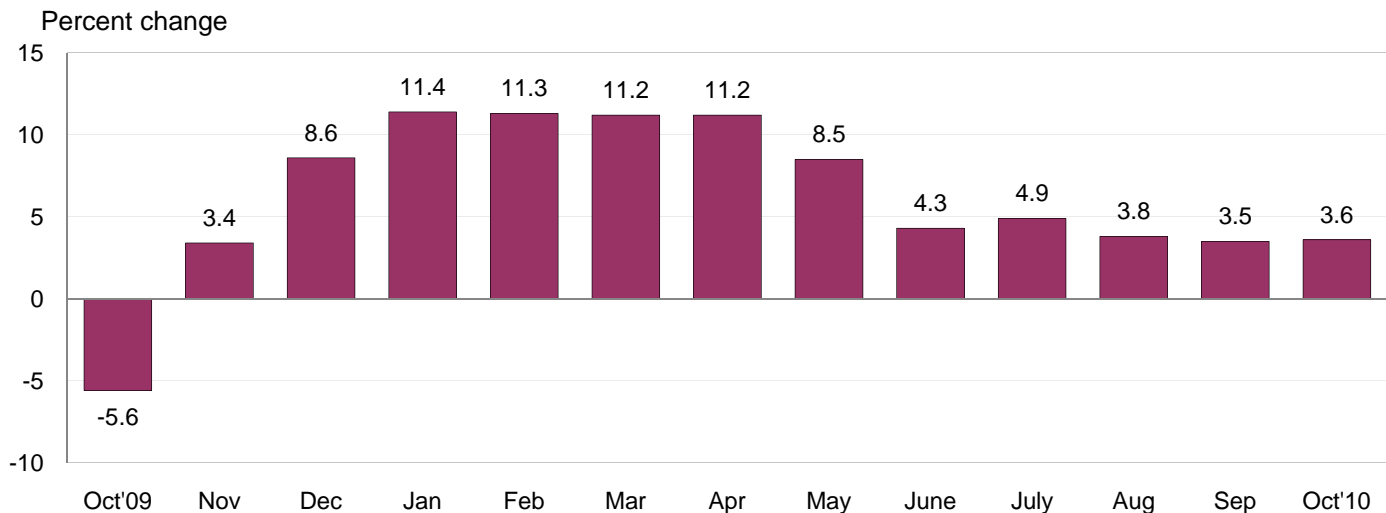


Chart 2. 12-month percent change in the Import Price Index: October 2009 – October 2010



All Imports: The price index for overall imports increased 0.9 percent in October, the largest monthly advance for the index since a 1.1 percent advance in April. The October rise was also only the second one-month upturn since the April increase. Despite the downward trend between May and September, import prices rose 3.6 percent over the past 12 months.

Fuel Imports: A 3.0 percent advance in fuel prices in October accounted for approximately two thirds of the increase in overall import prices. The October rise in fuel prices was the largest monthly advance since a 4.4 percent increase in January, and was driven by a 3.3 percent advance in petroleum prices, which more than offset a 2.3 percent drop in the price index for natural gas. Fuel prices increased 7.9 percent for the year ended in October, while petroleum and natural gas prices rose 7.6 percent and 9.5 percent, respectively, over the same period.

All Imports Excluding Fuel: Nonfuel prices rose 0.3 percent for the third consecutive month in October. Rising prices for nonfuel industrial supplies and materials and foods, feeds, and beverages led the advance, while prices for finished goods were mixed. The price index for nonfuel imports increased 2.5 percent over the past 12 months, driven by an 11.8 percent jump in the nonfuel industrial supplies and materials prices.

Table A. Percent changes

Month	IMPORTS			EXPORTS		
	All imports	Fuel imports	Nonfuel imports	All exports	Agricultural exports	Non-agricultural exports
2009						
October.....	0.8	3.0	0.4	0.0	-0.7	0.1
November.....	1.5	6.3	0.3	0.8	3.9	0.5
December.....	0.2	-0.2	0.4	0.7	1.8	0.6
2010						
January.....	1.2	4.4	0.4	0.8	1.3	0.7
February.....	-0.1	-0.7	0.1	-0.3	-4.0	0.1
March.....	0.4	1.4	0.2	0.7	1.9	0.6
April.....	1.1	2.6	0.6	1.1	-0.4	1.3
May.....	-0.8	-5.1	0.4	0.5	1.6	0.3
June.....	-1.2	-3.8	-0.4	-0.7	0.0	-0.8
July.....	0.0	1.0	-0.3	-0.2 ^r	-0.2	-0.2 ^r
August.....	0.4 ^r	1.0 ^r	0.3	0.8	4.2 ^r	0.5
September.....	-0.1 ^r	-1.7 ^r	0.3	0.6	2.3 ^r	0.3
October.....	0.9	3.0	0.3	0.8	2.5	0.7
Oct. 2008 to 2009.....	-5.6	-14.2	-3.1	-3.6	-9.7	-2.9
Oct. 2009 to 2010.....	3.6	7.9	2.5	5.8	15.7	4.8

r Revised

Chart 3. One-month percent change in the Export Price Index: October 2009 – October 2010

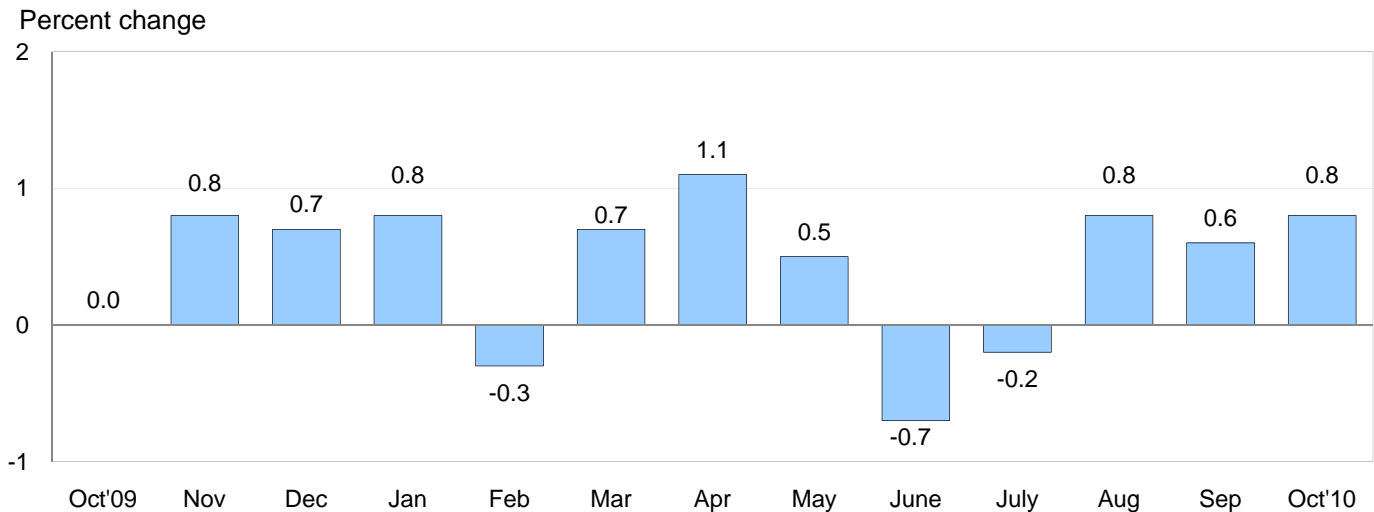
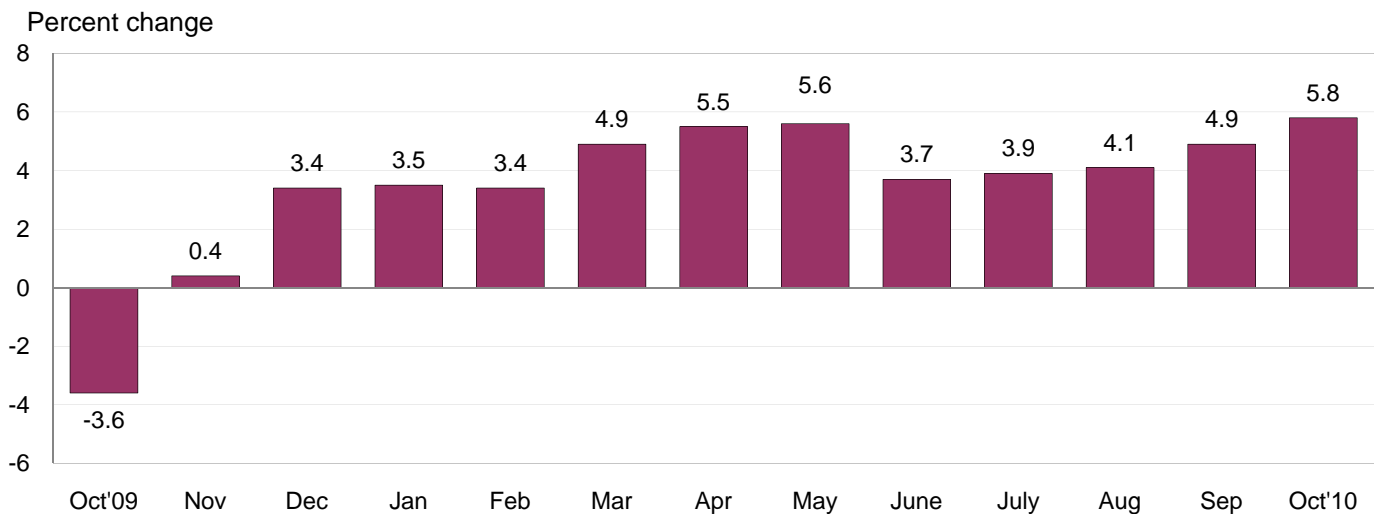


Chart 4. 12-month percent change in the Export Price Index: October 2009 – October 2010



All Exports: Export prices increased 0.8 percent in October following similar advances of 0.6 percent and 0.8 percent in September and August, respectively. Higher prices for agricultural and nonagricultural exports contributed to the increases in each of the three months. The price index for overall exports rose 5.8 percent over the past year, the largest 12-month advance since a 7.0 percent jump between September 2007 and September 2008.

Agricultural Exports: Prices for agricultural exports rose for the third consecutive month in October, rising 2.5 percent following advances of 2.3 percent and 4.2 percent the previous two months. Higher prices for corn, soybeans, and cotton, up 8.7 percent, 4.0 percent, and 6.8 percent, respectively, more than offset a 5.3 percent downturn in wheat prices. Sharp increases in wheat prices had driven the advances in agricultural prices in August and September. The price index for agricultural exports rose 15.7 percent for the October 2009-10 period.

All Exports Excluding Agriculture: Nonagricultural prices advanced 0.7 percent in October and 4.8 percent over the past year. Both increases were led by rising prices for nonagricultural industrial supplies and materials, up 1.8 percent in October and 13.8 percent over the past year.

SELECTED OCTOBER HIGHLIGHTS

Import Prices

Nonfuel Industrial Supplies and Materials: Prices for nonfuel industrial supplies and materials rose 1.9 percent in October after advancing 1.0 percent the previous month. Rising prices for both unfinished metals, up 3.1 percent, and chemicals, up 2.1 percent, each contributed to the October increase. The increase in unfinished metals prices was led by higher prices for copper, aluminum, gold, and other precious metals. Chemical prices were primarily driven by a 5.6 percent increase in fertilizer prices.

Finished Goods: Finished goods prices were mixed in October. Prices for automotive vehicles rose 0.4 percent, an increase that was in part attributable to year-end model changeovers. In contrast, consumer goods prices fell 0.5 percent, led by falling prices for medicinal, dental, and pharmaceutical products and household goods. Capital goods prices were unchanged as declining computer prices offset higher prices for non-computer capital goods.

Foods, Feeds, and Beverages: The price index for foods, feeds, and beverages rose 1.1 percent in October despite a 4.6 percent downturn in coffee prices. Coffee prices, up 29.9 percent over the past 12 months, were the main contributor to a 9.8 percent rise in foods, feeds, and beverages for the year ended in October. The October increase was led by higher prices for fruit and food oils.

Imports by Locality of Origin: Import prices from China rose 0.4 percent in October, the largest one-month advance for the index since a 0.8 percent increase in July 2008. The price indexes of imports from Canada, Mexico, and Japan also rose in October, up 1.4 percent, 0.6 percent, and 0.2 percent, respectively. In contrast, prices of imports from the European Union edged down 0.1 percent in October.

Transportation Services: Import air passenger fares rose 4.8 percent in October, after declining in each of the previous three months. Higher European, Asian, and Latin American/Caribbean fares all contributed to the October increase. Despite the recent declines prior to October, import air passenger fares rose 14.9 percent over the past year. Import air freight prices advanced 0.9 percent in October after a 0.2 percent rise in September and a 1.3 percent increase in August.

Export Prices

Nonagricultural Industrial Supplies and Materials: The price index for nonagricultural industrial supplies and materials advanced 1.8 percent in October. The increase was led by higher prices for metals, fuels, and chemicals, up 4.3 percent, 2.9 percent, and 1.6 percent, respectively.

Finished Goods: Prices for consumer goods and automotive vehicles rose in October, increasing 0.9 percent and 0.2 percent, respectively. Those advances were offset in part by a 0.1 percent drop in capital goods prices that was driven by a 1.0 percent decline in computer prices.

Transportation Services: In contrast to import air passenger fares, export air passenger fares fell 1.1 percent in October. The decrease followed an 8.1 percent drop in September and was led mostly by a 6.2 percent decline in Asian air passenger fares. The index for overall export air passenger fares jumped 23.1 percent over the past 12 months despite the recent declines. Export air freight prices increased 0.5 percent in October and 4.1 percent over the past year.

Import and Export Price Index data for November 2010 are scheduled for release on Friday, December 10, 2010 at 8:30 a.m. (EST).

Table 1. U.S. import price indexes and percent changes for selected categories of goods: October 2009 to October 2010

[2000=100, unless otherwise noted]

Description	End Use	Relative importance Sept. 2010 ¹	Index		Percent change				
			Sept. 2010	Oct. 2010	Annual Oct. 2009 to Oct. 2010	Monthly			Sept. 2010 to Oct. 2010
						June 2010 to July 2010	July 2010 to Aug. 2010	Aug. 2010 to Sept. 2010	
All commodities.....		100.000	125.6	126.7	3.6	0.0	0.4	-0.1	0.9
All imports excluding petroleum.....		81.209	110.9	111.3	2.7	-0.2	0.2	0.2	0.4
All imports excluding fuels (Dec. 2001=100)..		79.830	114.7	115.1	2.5	-0.3	0.3	0.3	0.3
Foods, feeds, & beverages.....	0	4.956	153.4	155.1	9.8	0.3	2.1	0.7	1.1
Agricultural foods, feeds & beverages, excluding distilled beverages.....	00	3.837	171.3	173.7	10.4	0.1	2.5	0.5	1.4
Nonagricultural foods (fish, distilled beverages).....	01	1.119	113.0	112.9	7.6	1.3	1.1	1.1	-0.1
Industrial supplies & materials.....	1	34.693	199.8	204.8	9.4	0.1	0.7	-0.6	2.5
Industrial supplies & materials excluding petroleum.....		15.903	150.8	153.3	11.7	-0.7	-0.3	0.5	1.7
Industrial supplies & materials excluding fuels (Dec. 2001=100).....		14.524	168.8	172.0	11.8	-1.1	0.1	1.0	1.9
Industrial supplies & materials, durable.....		9.123	162.6	165.7	12.6	-1.8	-0.1	1.2	1.9
Industrial supplies & materials nondurable excluding petroleum.....		5.400	136.9	138.7	10.4	0.7	-0.6	-0.5	1.3
Fuels & lubricants.....	10	20.168	246.4	253.8	7.9	1.0	1.0	-1.7	3.0
Petroleum & petroleum products.....	100	18.789	269.2	278.0	7.6	0.8	1.4	-1.5	3.3
Crude.....	10000	13.913	275.7	284.0	6.1	1.1	1.5	-1.4	3.0
Fuels, n.e.s.-coals & gas.....	101	1.130	116.8	114.8	9.3	3.8	-4.8	-5.6	-1.7
Gas-natural.....	10110	0.817	100.7	98.4	9.5	5.1	-5.2	-7.6	-2.3
Paper & paper base stocks.....	11	0.747	116.5	117.0	16.4	0.9	-0.3	0.3	0.4
Materials associated with nondurable supplies & materials.....	12	4.731	147.7	150.5	9.3	-0.1	0.4	0.8	1.9
Selected building materials.....	13	1.340	124.8	125.2	5.6	-4.2	-1.0	-0.2	0.3
Unfinished metals related to durable goods.....	14	4.273	244.4	252.0	21.2	-2.4	0.2	2.2	3.1
Finished metals related to durable goods. ...	15	1.867	147.6	150.1	9.0	-0.6	0.2	1.2	1.7
Nonmetals related to durable goods.....	16	1.566	107.7	108.1	3.1	0.3	0.1	0.1	0.4
Capital goods.....	2	23.393	91.8	91.8	-0.1	-0.1	0.3	0.1	0.0
Electric generating equipment.....	20	2.986	112.5	112.3	1.4	0.2	0.6	0.2	-0.2
Nonelectrical machinery.....	21	18.394	86.2	86.2	-0.2	-0.2	0.2	0.2	0.0
Transportation equipment excluding motor vehicles (Dec. 2001=100).....	22	2.013	121.6	121.7	-1.1	0.2	0.1	0.0	0.1
Automotive vehicles, parts & engines.....	3	12.221	109.3	109.7	0.8	0.4	0.2	0.2	0.4
Consumer goods, excluding automotives..	4	24.736	104.2	103.7	-0.6	-0.2	-0.1	0.1	-0.5
Nondurables, manufactured.....	40	11.653	110.0	109.4	1.5	0.4	0.2	0.1	-0.5
Durables, manufactured.....	41	11.856	98.7	98.2	-2.7	-0.7	-0.5	0.1	-0.5
Nonmanufactured consumer goods.....	42	1.227	103.0	103.6	2.0	-0.5	1.2	-0.1	0.6

¹ Relative importance figures are based on 2008 trade values.

NOTES: Data may be revised in each of the three months after original publication.

Dash = Not available

Table 2. U.S. export price indexes and percent changes for selected categories of goods: October 2009 to October 2010

[2000=100, unless otherwise noted]

Description	End Use	Relative importance Sept. 2010 ¹	Index		Percent change				
			Sept. 2010	Oct. 2010	Annual Oct. 2009 to Oct. 2010	Monthly			
						June 2010 to July 2010	July 2010 to Aug. 2010	Aug. 2010 to Sept. 2010	Sept. 2010 to Oct. 2010
All commodities.....		100.000	123.7	124.7	5.8	-0.2	0.8	0.6	0.8
Agricultural commodities.....		9.298	175.9	180.3	15.7	-0.2	4.2	2.3	2.5
Nonagricultural commodities.....		90.702	119.9	120.7	4.8	-0.2	0.5	0.3	0.7
Foods, feeds, & beverages.....	0	8.361	174.6	178.4	14.0	-0.3	4.3	2.0	2.2
Agricultural foods, feeds & beverages, excluding distilled beverages.....	00	7.778	177.6	181.7	14.3	-0.4	4.7	2.1	2.3
Nonagricultural foods (fish, distilled beverages).....	01	0.583	149.4	149.8	11.0	0.3	-0.3	1.5	0.3
Industrial supplies & materials.....	1	31.764	162.6	165.6	14.3	-0.6	1.5	0.9	1.8
Industrial supplies & materials, durable.....		12.359	167.1	169.6	11.4	-0.5	0.2	1.3	1.5
Industrial supplies & materials, nondurable.....		19.405	160.7	163.9	16.2	-0.8	2.4	0.6	2.0
Agricultural industrial supplies & materials...	10	1.520	172.0	177.8	23.6	0.9	1.6	3.2	3.4
Nonagricultural industrial supplies & materials.....		30.243	162.4	165.3	13.8	-0.8	1.5	0.7	1.8
Fuels & lubricants.....	11	5.976	212.7	218.9	24.7	-2.1	5.4	-0.9	2.9
Nonagricultural supplies & materials excluding fuels & building materials.....	12	23.260	158.2	160.6	12.1	-0.4	0.7	1.2	1.5
Selected building materials.....	13	1.007	117.2	116.8	3.8	-0.7	-0.5	-0.1	-0.3
Capital goods.....	2	37.884	103.4	103.3	0.1	-0.1	0.0	0.0	-0.1
Electrical generating equipment.....	20	3.518	108.7	109.2	1.2	-0.7	0.1	0.1	0.5
Nonelectrical machinery.....	21	27.624	94.2	93.9	-0.5	-0.1	0.0	0.0	-0.3
Transportation equipment excluding motor vehicles (Dec. 2001=100).....	22	6.742	140.2	140.5	2.5	0.3	0.1	0.1	0.2
Automotive vehicles, parts & engines.....	3	9.080	108.7	108.9	0.7	0.0	0.1	0.1	0.2
Consumer goods, excluding automotives..	4	12.912	111.7	112.7	3.1	0.4	-0.1	0.9	0.9
Nondurables, manufactured.....	40	5.906	112.9	113.4	3.8	0.1	0.5	0.6	0.4
Durables, manufactured.....	41	5.699	109.9	111.4	1.6	0.8	-0.8	1.6	1.4

¹ Relative importance figures are based on 2008 trade values.

NOTES: Data may be revised in each of the three months after original publication.

Dash = Not available

Table 3. U.S. import price indexes and percent changes for selected categories of goods: October 2009 to October 2010

[December 2005=100, unless otherwise noted]

Description	NAICS	Relative importance Sept. 2010 ¹	Index		Percent change				
			Sept. 2010	Oct. 2010	Annual Oct. 2009 to Oct. 2010	Monthly			
						June 2010 to July 2010	July 2010 to Aug. 2010	Aug. 2010 to Sept. 2010	Sept. 2010 to Oct. 2010
Nonmanufactured articles.....		17.711	124.3	127.5	8.6	1.1	1.4	-1.4	2.6
Agriculture, forestry, fishing and hunting...	11	1.888	154.1	155.6	17.1	-0.7	4.3	0.2	1.0
Crop production.....	111	1.342	160.4	161.3	15.4	-0.5	5.4	-0.3	0.6
Mining.....	21	15.823	121.1	124.5	7.7	1.2	1.1	-1.7	2.8
Mining (except oil and gas) (Dec. 2006=100).....	212	0.551	139.3	138.9	5.6	0.9	-0.8	0.1	-0.3
Manufactured articles.....		81.742	110.1	110.6	2.4	-0.3	0.1	0.2	0.5
Manufactured goods, part 1.....	31	10.376	110.9	111.6	4.0	0.7	0.5	0.3	0.6
Food manufacturing.....	311	2.730	132.5	134.3	13.2	1.4	1.6	0.8	1.4
Beverage and tobacco product manufacturing.....	312	0.919	108.6	109.2	1.4	0.1	0.5	-0.1	0.6
Textile product mills.....	314	0.799	103.7	103.9	3.5	1.2	0.1	0.3	0.2
Apparel manufacturing.....	315	3.983	101.7	102.2	0.4	0.3	0.1	0.0	0.5
Leather and allied product manufacturing. . .	316	1.540	108.2	108.5	1.3	0.7	0.2	0.3	0.3
Manufactured goods, part 2.....	32	18.019	121.3	122.3	6.2	-0.5	0.2	-0.2	0.8
Wood product manufacturing.....	321	0.806	101.9	102.2	8.7	-6.8	-1.2	-0.3	0.3
Paper manufacturing.....	322	1.271	109.7	110.3	11.0	0.8	-0.2	0.2	0.5
Petroleum and coal products manufacturing.....	324	3.910	120.7	125.0	8.9	-0.2	0.4	-2.2	3.6
Chemical manufacturing.....	325	9.082	126.4	126.0	4.7	-0.5	0.2	0.5	-0.3
Plastics and rubber products manufacturing.....	326	1.829	116.1	116.8	4.2	0.4	0.0	0.2	0.6
Nonmetallic mineral product manufacturing.....	327	1.012	122.5	123.5	3.5	0.8	0.0	0.5	0.8
Manufactured goods, part 3.....	33	53.348	106.5	106.8	0.9	-0.3	0.0	0.3	0.3
Primary metal manufacturing.....	331	4.963	160.7	165.2	20.2	-2.4	0.2	2.1	2.8
Fabricated metal product manufacturing. . .	332	2.749	119.0	119.8	3.3	0.3	0.3	0.1	0.7
Machinery manufacturing.....	333	6.843	113.8	114.5	1.4	0.1	0.4	0.3	0.6
Computer and electronic product manufacturing.....	334	14.957	86.3	85.8	-3.6	-0.8	-0.3	0.0	-0.6
Electrical equipment, appliance, and component manufacturing.....	335	3.847	112.8	112.5	-0.2	0.0	0.4	0.0	-0.3
Transportation equipment manufacturing. . .	336	13.467	106.3	106.6	0.3	0.2	0.2	0.2	0.3
Furniture and related product manufacturing.....	337	1.336	106.4	106.6	-1.6	0.0	0.2	0.2	0.2
Miscellaneous manufacturing.....	339	5.186	112.7	112.7	0.4	0.1	0.1	0.2	0.0

¹ Relative importance figures are based on 2008 trade values.

NOTES: Data may be revised in each of the three months after original publication.

Dash = Not available

Table 4. U.S. export price indexes and percent changes for selected categories of goods: October 2009 to October 2010

[December 2005=100, unless otherwise noted]

Description	NAICS	Relative importance Sept. 2010 ¹	Index		Percent change				
			Sept. 2010	Oct. 2010	Annual	Monthly			
					Oct. 2009 to Oct. 2010	June 2010 to July 2010	July 2010 to Aug. 2010	Aug. 2010 to Sept. 2010	Sept. 2010 to Oct. 2010
Nonmanufactured articles.....		7.292	144.1	147.4	24.6	-1.6	5.9	3.1	2.3
Agriculture, forestry, fishing and hunting...	11	5.009	156.4	161.2	22.1	-0.7	7.3	3.6	3.1
Crop production.....	111	4.650	161.4	166.8	23.0	-0.7	8.0	3.9	3.3
Mining.....	21	2.283	112.3	112.8	28.9	-3.4	2.9	2.3	0.4
Mining (except oil and gas).....	212	1.835	132.2	133.8	44.8	-1.6	3.4	1.7	1.2
Manufactured articles.....		89.923	112.8	113.6	4.3	-0.1	0.4	0.4	0.7
Manufactured goods, part 1.....	31	6.756	129.0	130.6	8.3	0.4	0.4	0.9	1.2
Food manufacturing.....	311	4.581	144.6	146.4	8.4	0.4	0.5	0.9	1.2
Beverage and tobacco product manufacturing.....	312	0.547	112.6	113.9	5.5	1.9	1.4	1.2	1.2
Apparel manufacturing.....	315	0.379	105.6	105.6	2.7	0.0	0.0	0.9	0.0
Manufactured goods, part 2.....	32	23.815	120.2	122.0	10.4	-0.3	2.0	0.2	1.5
Wood product manufacturing.....	321	0.447	113.8	113.5	5.4	-0.6	-0.9	-0.4	-0.3
Paper manufacturing.....	322	2.054	123.9	123.4	11.4	1.5	-0.1	1.0	-0.4
Petroleum and coal products manufacturing.....	324	3.590	121.6	127.3	23.8	-1.5	8.8	-2.9	4.7
Chemical manufacturing.....	325	14.842	122.6	124.1	9.9	-0.3	1.0	0.9	1.2
Plastics and rubber products manufacturing.....	326	2.053	107.9	108.1	0.8	0.6	0.6	0.1	0.2
Nonmetallic mineral product manufacturing.....	327	0.830	113.3	114.3	2.3	0.0	0.2	0.4	0.9
Manufactured goods, part 3.....	33	59.352	108.4	108.7	1.6	0.1	-0.2	0.3	0.3
Primary metal manufacturing.....	331	5.022	148.6	152.3	18.2	0.2	-0.9	1.6	2.5
Fabricated metal product manufacturing.	332	2.737	121.5	121.9	0.4	0.2	-0.1	0.2	0.3
Machinery manufacturing.....	333	12.512	114.8	114.9	1.9	0.1	0.1	-0.1	0.1
Computer and electronic product manufacturing.....	334	15.246	91.4	90.9	-2.5	-0.2	-0.2	0.0	-0.5
Electrical equipment, appliance, and component manufacturing.....	335	3.383	108.3	108.7	1.6	0.0	0.1	0.3	0.4
Transportation equipment manufacturing....	336	15.074	111.4	111.6	1.2	0.1	0.1	0.1	0.2
Miscellaneous manufacturing.....	339	5.029	111.6	113.1	2.4	0.7	-0.6	1.3	1.3

¹ Relative importance figures are based on 2008 trade values.

NOTES: Data may be revised in each of the three months after original publication.

Dash = Not available

Table 5. U.S. import price indexes and percent changes for selected categories of goods: October 2009 to October 2010

[2009=100, unless otherwise noted]

Description	Harmoni- zied system	Relative importance Sept. 2010 ¹	Index		Percent change				
			Sept. 2010	Oct. 2010	Annual Oct. 2009 to Oct. 2010	Monthly			
						June 2010 to July 2010	July 2010 to Aug. 2010	Aug. 2010 to Sept. 2010	Sept. 2010 to Oct. 2010
Live animals; animal products.....	I	1.162	147.7	147.9	12.2	0.1	1.7	1.4	0.1
Meat and edible meat offal.....	02	0.262	183.8	183.7	18.3	-1.6	1.7	0.3	-0.1
Fish and crustaceans, molluscs and other aquatic invertebrates.....	03	0.611	112.8	113.3	12.5	1.8	1.5	2.0	0.4
Vegetable products.....	II	1.579	179.0	180.5	14.1	0.1	4.8	0.6	0.8
Edible vegetables, roots, and tubers.....	07	0.408	314.2	302.6	2.8	-7.8	9.6	-4.6	-3.7
Edible fruit and nuts; peel of citrus fruit or melons.....	08	0.427	112.0	114.0	12.0	-1.2	2.8	3.2	1.8
Coffee, tea, mate and spices.....	09	0.351	206.0	199.5	27.0	9.2	3.2	6.8	-3.2
Animal or vegetable fats and oils (Dec. 2009=100).....	III	0.228	110.8	116.2	-	1.8	6.3	0.9	4.9
Prepared foodstuffs, beverages, and tobacco.....	IV	2.338	143.3	145.0	6.0	1.1	0.6	-0.2	1.2
Cocoa and cocoa preparations (Dec. 2009=100).....	18	0.197	94.3	93.4	-	0.0	-1.4	-2.0	-1.0
Preparations of cereals, flour, starch or milk; bakers' wares (Dec. 2007=100).....	19	0.264	124.7	127.6	15.3	6.9	-0.2	0.0	2.3
Preparations of vegetables, fruit, nuts, or other parts of plants.....	20	0.287	129.4	136.2	8.1	-0.6	0.4	0.0	5.3
Beverages, spirits, and vinegar.....	22	0.905	118.0	118.8	1.5	0.2	0.4	-0.1	0.7
Mineral products.....	V	20.189	248.8	255.7	7.7	1.0	0.9	-1.7	2.8
Salt; sulfur; earths and stone; plaster materials, lime & cement (Dec. 2009=100).....	25	0.190	102.4	103.1	-	0.4	0.0	0.0	0.7
Mineral fuels, oils and residuals, bituminous substances and mineral waxes.....	27	19.746	245.1	252.1	7.6	1.0	0.9	-1.8	2.9
Products of the chemical or allied industries.....	VI	8.357	139.8	140.1	5.5	-0.6	0.3	0.6	0.2
Inorganic chemicals.....	28	0.999	286.1	308.3	29.2	-0.9	-0.3	4.3	7.8
Organic chemicals.....	29	2.776	133.8	134.4	5.5	-0.5	0.5	0.0	0.4
Pharmaceutical products.....	30	2.852	118.2	114.4	0.3	0.1	0.2	0.0	-3.2
Fertilizers (Dec. 2009=100).....	31	0.310	100.0	101.6	-	-1.6	-0.6	1.2	1.6
Tanning & dyeing extracts; dye & pigments; varnish & paints; putty.....	32	0.164	106.6	106.8	0.8	-0.9	0.3	-0.2	0.2
Essential oils and resinoids (Dec. 2001=100).....	33	0.408	118.6	119.5	-2.1	-1.5	2.3	0.7	0.8
Miscellaneous chemical products.....	38	0.502	93.9	95.8	6.4	0.4	0.2	0.8	2.0
Plastics and articles thereof; rubber and articles thereof.....	VII	3.045	137.8	139.4	9.0	0.4	0.2	0.2	1.2
Plastics and articles thereof.....	39	1.900	132.2	132.4	6.3	0.5	0.2	0.2	0.2
Rubber and articles thereof.....	40	1.145	148.6	152.9	13.6	0.1	0.3	0.3	2.9
Raw hides, skins, leather, furskins, travel goods, etc.....	VIII	0.598	115.1	115.1	1.3	0.2	0.1	0.3	0.0
Articles of leather; travel goods, bags, etc. of various materials.....	42	0.542	115.2	115.2	0.5	-0.1	0.1	0.3	0.0
Wood, wood charcoal, cork, straw, basketware and wickerwork.....	IX	0.825	122.9	123.3	8.0	-6.6	-1.7	-0.4	0.3
Woodpulp, recovered paper, and paper products.....	X	1.415	113.4	113.9	8.6	0.6	-0.2	0.4	0.4
Pulp wood, waste paper, and paperboard (Dec. 2009=100).....	47	0.226	127.1	128.0	-	1.2	-2.5	-0.2	0.7
Paper and paperboard; articles of paper pulp, paper or paperboard.....	48	0.916	106.0	106.5	5.3	0.8	0.3	0.3	0.5
Printed matter.....	49	0.273	122.4	122.4	1.9	-0.1	0.2	0.7	0.0

See footnotes at end of table.

Table 5. U.S. import price indexes and percent changes for selected categories of goods: October 2009 to October 2010 — Continued
 [2000=100, unless otherwise noted]

Description	Harmo- nized system	Relative importance Sept. 2010 ¹	Index		Percent change				
			Sept. 2010	Oct. 2010	Annual	Monthly			
					Oct. 2009 to Oct. 2010	June 2010 to July 2010	July 2010 to Aug. 2010	Aug. 2010 to Sept. 2010	Sept. 2010 to Oct. 2010
Textile and textile articles.....	XI	5.019	103.7	104.2	1.0	0.4	0.1	0.1	0.5
Articles of apparel and clothing accessories, knitted or crocheted.....	61	1.928	99.1	99.7	0.1	0.6	0.1	0.1	0.6
Articles of apparel and clothing accessories, not knitted or crocheted.....	62	1.875	102.9	103.4	0.7	0.0	0.1	-0.1	0.5
Made-up or worn textile articles.....	63	0.547	95.8	96.2	4.8	1.6	0.1	0.3	0.4
Headgear, umbrellas, artificial flowers, etc. ...	XII	1.234	108.3	108.6	1.0	0.7	0.3	0.3	0.3
Footwear and parts of such articles.....	64	1.051	107.6	107.8	1.1	0.9	0.2	0.3	0.2
Stone, plaster, cement, asbestos, ceramics, glass etc.....	XIII	0.890	124.5	126.1	1.3	0.1	0.1	0.4	1.3
Articles of stone, plaster, cement, asbestos, or mica (Dec. 2001=100).....	68	0.317	118.3	119.0	1.1	0.4	0.0	0.3	0.6
Ceramic products.....	69	0.278	139.3	139.4	-0.1	-0.4	-0.4	0.9	0.1
Glass and glassware.....	70	0.295	115.8	119.5	2.8	0.3	0.4	0.1	3.2
Pearls, stones, precious metals, imitation jewelry, and coins.....	XIV	2.823	161.3	166.4	13.6	-0.4	-0.6	0.9	3.2
Base metals and articles of base metals.....	XV	6.170	181.3	183.5	12.6	-1.6	0.6	1.6	1.2
Iron and steel.....	72	1.404	229.3	227.0	17.0	-2.2	-2.1	0.2	-1.0
Articles of iron or steel.....	73	1.895	151.9	152.4	10.8	0.0	0.5	0.9	0.3
Copper and articles thereof.....	74	0.693	333.1	351.0	18.9	-1.9	2.4	5.6	5.4
Nickel and articles thereof (Dec. 2009=100)...	75	0.188	122.3	126.4	-	-10.4	1.4	3.3	3.4
Aluminum and articles thereof.....	76	0.832	135.6	139.1	14.9	-2.3	2.7	1.8	2.6
Tools, implements, cutlery, spoons and forks, of base metal; parts thereof.....	82	0.366	118.2	119.3	2.1	-0.1	0.3	0.1	0.9
Miscellaneous articles of base metal.....	83	0.413	127.1	127.5	-0.4	0.3	0.1	0.0	0.3
Machinery, electrical equipment, TV image and sound recorders, parts, etc.....	XVI	25.483	86.2	86.1	-1.4	-0.3	-0.1	0.1	-0.1
Machinery and mechanical appliances; parts thereof.....	84	12.915	88.3	88.4	0.1	0.0	0.2	0.2	0.1
Electrical machinery and equip, sound and TV recorders & reproducers, parts.....	85	12.568	84.2	83.8	-2.9	-0.8	-0.4	0.0	-0.5
Vehicles, aircraft, vessels and associated transport equipment.....	XVII	11.420	110.5	110.8	0.4	0.4	0.2	0.2	0.3
Motor vehicles and their parts.....	87	10.316	109.5	109.9	0.5	0.4	0.2	0.1	0.4
Aircraft, spacecraft, and parts thereof (Dec. 2002=100).....	88	1.006	113.7	113.7	-1.7	0.0	0.0	0.0	0.0
Optical, photo, measuring, medical & musical instruments; & timepieces.....	XVIII	3.277	101.0	101.0	-1.6	0.1	0.0	0.1	0.0
Optical, photographic, measuring and medical instruments.....	90	2.968	98.7	98.7	-1.5	0.1	0.0	0.1	0.0
Clocks and watches and parts thereof.....	91	0.230	122.4	123.1	-1.2	0.1	0.9	-0.3	0.6
Miscellaneous manufactured articles.....	XX	3.885	106.7	106.7	-0.7	0.0	0.1	0.1	0.0
Furniture & stuffed furnishings; lamps & lighting fittings, nesoi; prefab bldgs.....	94	1.979	109.7	109.9	-1.3	0.0	0.3	0.0	0.2
Toys, games and sports equipment; parts and accessories thereof.....	95	1.702	101.0	100.9	-0.3	0.0	0.0	0.1	-0.1
Miscellaneous manufactured articles.....	96	0.205	120.7	121.0	4.0	0.3	0.2	0.2	0.2

¹ Relative importance figures are based on 2008 trade values.

NOTES: Data may be revised in each of the three months after original publication.

Dash = Not available

Table 6. U.S. export price indexes and percent changes for selected categories of goods: October 2009 to October 2010

[2000=100, unless otherwise noted]

Description	Harmoni- zied system	Relative importance Sept. 2010 ¹	Index		Percent change				
			Sept. 2010	Oct. 2010	Annual	Monthly			
					Oct. 2009 to Oct. 2010	June 2010 to July 2010	July 2010 to Aug. 2010	Aug. 2010 to Sept. 2010	Sept. 2010 to Oct. 2010
Live animals; animal products.....	I	1.781	175.7	178.4	18.7	0.2	-0.1	1.9	1.5
Meat & edible meat offal (Dec. 2006=100). . .	02	1.010	143.9	146.9	21.8	1.4	-0.7	-0.4	2.1
Fish and crustaceans, molluscs and other aquatic invertebrates.....	03	0.327	156.7	157.0	19.6	0.9	-0.7	2.6	0.2
Vegetable products.....	II	4.513	195.6	200.4	14.1	-0.3	7.6	2.7	2.5
Edible fruit and nuts; peel of citrus fruit or melons.....	08	0.705	117.8	122.2	9.9	-7.9	-1.1	-1.3	3.7
Cereals.....	10	1.951	216.6	222.6	29.3	1.8	13.0	9.9	2.8
Oilseeds and misc. grains, seeds, fruits, plants, straw and fodder.....	12	1.362	207.9	215.5	8.5	1.5	8.0	-3.4	3.7
Animal or vegetable fats and oils (Dec. 2009=100).....	III	0.311	110.0	116.0	-	-1.3	0.4	1.5	5.5
Prepared foodstuffs, beverages, and tobacco.....	IV	2.490	142.9	143.8	3.3	0.9	1.3	0.4	0.6
Preparations of vegetables, fruit, nuts or other parts of plants (Dec. 2009=100).....	20	0.339	103.8	104.4	-	0.1	0.0	-1.7	0.6
Miscellaneous edible preparations.....	21	0.405	118.4	118.8	-0.7	0.0	0.3	0.3	0.3
Beverages, spirits, and vinegar (Dec. 2008=100).....	22	0.327	103.1	103.6	0.1	-0.5	0.7	0.6	0.5
Residues and waste from the food industries; prepared animal feed.....	23	0.608	198.7	203.7	6.6	4.5	4.1	1.2	2.5
Mineral products.....	V	5.949	254.4	261.5	24.2	-2.3	5.8	-0.8	2.8
Mineral fuels, oils and residuals, bituminous substances and mineral waxes.....	27	5.221	245.1	252.3	24.3	-2.2	6.0	-1.2	2.9
Products of the chemical or allied industries.....	VI	12.047	145.9	148.2	9.9	-0.4	0.7	0.7	1.6
Inorganic chemicals.....	28	1.071	186.0	188.8	13.3	0.5	-0.3	0.1	1.5
Organic chemicals.....	29	3.079	154.6	158.3	14.3	-1.3	1.3	0.6	2.4
Pharmaceutical products.....	30	2.967	124.1	125.1	7.5	0.9	0.7	0.9	0.8
Tanning or dyeing extracts, dyes, paints, varnish, putty, & inks.....	32	0.539	116.8	117.1	1.9	2.3	0.1	0.3	0.3
Essential oils and resinoids; perfumery cosmetic or toilet preparations.....	33	0.714	124.7	125.3	-0.7	-1.0	1.3	0.5	0.5
Soap; lubricants; waxes, polishing or scouring products; candles, pastes.....	34	0.447	122.9	120.0	2.9	0.4	0.8	3.1	-2.4
Miscellaneous chemical products.....	38	2.078	143.1	142.9	7.4	0.1	0.5	-0.1	-0.1
Plastics and articles thereof; rubber and articles thereof.....	VII	5.074	138.7	138.3	3.5	-0.2	0.9	0.7	-0.3
Plastics and articles thereof.....	39	4.116	132.3	131.9	3.3	-0.4	0.9	0.9	-0.3
Rubber and articles thereof.....	40	0.958	167.5	167.1	4.7	0.8	0.4	0.1	-0.2
Raw hides, skins, leather, furskins, travel goods, etc.....	VIII	0.374	120.7	121.5	23.2	-0.3	0.1	-0.2	0.7
Wood, wood charcoal, cork, straw, basketware and wickerwork.....	IX	0.552	109.4	109.2	5.8	-0.4	-0.8	-0.4	-0.2
Woodpulp, recovered paper, and paper products.....	X	2.581	122.1	122.7	13.2	1.9	0.7	1.2	0.5
Woodpulp and recovered paper.....	47	0.739	139.1	141.7	37.8	2.9	0.4	3.6	1.9
Paper and paperboard; articles of paper pulp, paper or paperboard.....	48	1.347	118.3	117.8	7.3	2.2	1.1	0.4	-0.4
Printed material.....	49	0.495	116.0	116.9	1.1	-0.3	0.0	0.0	0.8
Textile and textile articles.....	XI	2.083	120.1	123.3	16.9	0.1	1.2	2.5	2.7
Cotton, including yarns and woven fabrics thereof.....	52	0.745	145.9	157.2	53.5	0.2	3.6	6.3	7.7

See footnotes at end of table.

Table 6. U.S. export price indexes and percent changes for selected categories of goods: October 2009 to October 2010 — Continued
 [2000=100, unless otherwise noted]

Description	Harmo- nized system	Relative importance Sept. 2010 ¹	Index		Percent change				
			Sept. 2010	Oct. 2010	Annual	Monthly			
					Oct. 2009 to Oct. 2010	June 2010 to July 2010	July 2010 to Aug. 2010	Aug. 2010 to Sept. 2010	Sept. 2010 to Oct. 2010
Stone, plaster, cement, asbestos, ceramics, glass etc. (Dec. 2008=100).....	XIII	0.785	116.1	116.0	1.3	-0.3	0.2	0.3	-0.1
Glass and glassware.....	70	0.417	98.0	98.2	0.6	-0.2	0.4	0.5	0.2
Pearls, stones, precious metals, imitation jewelry, and coins.....	XIV	5.079	215.6	225.6	24.0	0.9	-1.5	2.8	4.6
Base metals and articles of base metals.....	XV	5.904	163.9	164.8	8.3	-0.7	1.3	1.6	0.5
Iron and steel.....	72	1.757	195.7	192.1	10.0	-2.1	0.8	2.0	-1.8
Articles of iron or steel.....	73	1.511	159.6	159.4	1.5	0.4	-0.1	0.7	-0.1
Copper and articles thereof.....	74	0.605	238.4	248.4	27.3	-0.4	6.9	3.2	4.2
Aluminum and articles thereof.....	76	0.881	123.3	126.9	12.9	-0.3	2.2	2.7	2.9
Tools, implements, cutlery, spoons and forks, of base metal; parts thereof.....	82	0.408	124.1	125.5	1.4	0.0	0.0	0.0	1.1
Miscellaneous articles of base metal.....	83	0.310	124.2	124.8	2.2	0.2	-0.4	-0.5	0.5
Machinery, electrical equipment, TV image and sound recorders, parts, etc.....	XVI	29.752	95.1	95.0	-0.4	-0.1	-0.2	-0.1	-0.1
Machinery and mechanical appliances; parts thereof.....	84	17.488	106.4	106.3	0.4	0.0	-0.1	-0.3	-0.1
Electrical machinery and equipment and parts and accessories thereof.....	85	12.264	82.9	82.8	-1.3	-0.2	-0.2	0.1	-0.1
Vehicles, aircraft, vessels and associated transport equipment.....	XVII	13.176	121.7	121.9	1.2	0.0	0.2	0.1	0.2
Motor vehicles and their parts.....	87	8.462	108.5	108.8	0.9	-0.1	0.1	0.0	0.3
Ships, boats and floating structures (Dec. 2009=100).....	89	0.294	101.9	102.0	-	0.3	0.7	0.8	0.1
Optical, photo, measuring, medical & musical instruments; & timepieces.....	XVIII	5.904	106.8	106.7	-1.7	0.4	0.0	0.2	-0.1
Miscellaneous manufactured articles.....	XX	1.499	107.6	107.4	-0.8	-0.1	-0.4	0.0	-0.2
Furniture; stuffed furnishings; lamps and lighting fittings nesoi;.....	94	0.748	118.2	118.3	-0.7	-0.2	-0.2	-0.3	0.1
Toys, games and sports equipment; parts and accessories thereof.....	95	0.639	92.5	92.1	-1.1	0.1	-0.6	0.1	-0.4

1 Relative importance figures are based on 2008 trade values.

NOTES: Data may be revised in each of the three months after original publication.

Dash = Not available

Table 7. U.S. import price indexes and percent changes by locality of origin: October 2009 to October 2010
 [2000=100, unless otherwise noted]

Description	Percent of U.S. imports ¹	Index		Percent change				
		Sept. 2010	Oct. 2010	Annual	Monthly			
				Oct. 2009 to Oct. 2010	June 2010 to July 2010	July 2010 to Aug. 2010	Aug. 2010 to Sept. 2010	Sept. 2010 to Oct. 2010
Industrialized Countries²	41.082	124.5	125.3	3.0	0.5	0.2	-0.3	0.6
Nonmanufactured articles.....	5.687	189.9	195.0	8.2	3.4	-0.5	-1.8	2.7
Manufactured articles.....	34.943	119.1	119.5	2.5	0.1	0.3	-0.2	0.3
Other Countries³	58.918	123.6	124.6	3.1	0.0	0.4	0.0	0.8
Nonmanufactured articles.....	15.714	253.4	259.6	8.7	0.7	2.1	-0.9	2.4
Manufactured articles.....	43.010	105.3	105.6	1.4	-0.2	-0.1	0.3	0.3
Canada	15.923	140.3	142.2	7.2	0.4	0.4	0.0	1.4
Nonmanufactured articles.....	5.257	183.6	188.5	9.6	4.0	-0.8	-1.8	2.7
Manufactured articles.....	10.335	132.5	133.8	6.5	-0.8	0.7	0.5	1.0
European Union⁴	16.799	128.4	128.3	1.7	-0.2	0.6	0.2	-0.1
Nonmanufactured articles.....	0.211	251.6	256.4	4.9	-1.6	2.3	-0.2	1.9
Manufactured articles.....	16.491	125.9	125.7	1.7	-0.2	0.6	0.2	-0.2
France (Dec. 2003=100)	1.948	121.4	121.1	-1.6	0.0	0.2	0.1	-0.2
Germany (Dec. 2003=100)	4.572	111.7	112.3	1.3	-0.4	0.5	0.4	0.5
United Kingdom (Dec. 2003=100)	2.566	126.0	126.7	3.0	-0.3	0.6	0.3	0.6
Latin America⁵	17.999	155.8	157.1	3.9	0.1	0.6	0.1	0.8
Nonmanufactured articles.....	6.186	280.2	284.4	7.1	2.1	2.1	-0.2	1.5
Manufactured articles.....	11.730	129.6	130.3	2.0	-0.8	-0.2	0.2	0.5
Mexico (Dec. 2003=100)	10.275	136.1	136.9	1.2	-0.8	0.1	0.2	0.6
Nonmanufactured articles (Dec. 2008=100).....	2.141	147.6	150.2	5.7	0.3	2.4	0.2	1.8
Manufactured articles (Dec. 2008=100)....	8.085	95.9	96.2	-0.3	-1.1	-0.5	0.2	0.3
Pacific Rim (Dec. 2003=100)⁶	31.500	101.4	101.2	1.4	0.0	0.0	0.3	-0.2
China (Dec. 2003=100)	16.449	100.5	100.9	0.5	0.1	0.0	0.0	0.4
Japan	6.678	99.0	99.2	1.7	0.0	0.2	0.2	0.2
Asian NICs⁷	5.003	88.6	87.7	2.2	0.5	0.0	0.1	-1.0
ASEAN (Dec. 2003=100)⁸	5.274	97.3	97.7	1.2	0.5	0.4	0.5	0.4
Asia Near East (Dec. 2003=100)⁹	5.380	202.5	207.3	3.9	-2.0	0.9	0.0	2.4

1 Percentage of trade figures are based on 2008 trade values.

2 Includes Western Europe, Canada, Japan, Australia, New Zealand and South Africa.

3 Includes Eastern Europe, Latin America, OPEC countries, and other countries in Asia, Africa and the Western Hemisphere.

4 Includes European Union countries.

5 Includes Mexico, Central America, South America and the Caribbean.

6 Includes China, Japan, Australia, Brunei, Indonesia, Macao, Malaysia, New Zealand, Papua New Guinea, Philippines and Asian Newly Industrialized Countries.

7 Asian Newly Industrialized Countries. Includes Hong Kong, Singapore, South Korea and Taiwan.

8 Association of Southeast Asian Nations. Includes Brunei, Cambodia, Indonesia, Laos, Malaysia, Myanmar, Philippines, Singapore, Thailand and Vietnam.

9 Includes Bahrain, Iran, Iraq, Israel, Jordan, Kuwait, Lebanon, Oman, Qatar, Saudi Arabia, Syria, United Arab Emirates and Yemen.

NOTES: Data may be revised in each of the three months after original publication.

Regions are not mutually exclusive.

Dash = Not available

Table 8. U.S. international price indexes and percent changes for selected transportation services: October 2009 to October 2010

[2000=100, unless otherwise noted]

Description	Relative importance Sept. 2010 ¹	Index		Percent change				
		Sept. 2010	Oct. 2010	Annual	Monthly			
				Oct. 2009 to Oct. 2010	June 2010 to July 2010	July 2010 to Aug. 2010	Aug. 2010 to Sept. 2010	Sept. 2010 to Oct. 2010
Air Freight								
Import Air Freight	100.000	163.2	164.7	12.7	-1.1	1.3	0.2	0.9
Europe (Dec. 2003=100).....	21.535	131.7	135.5	-0.3	-1.3	4.3	1.0	2.9
Asia.....	75.434	151.7	152.2	17.2	-0.3	0.6	0.1	0.3
Export Air Freight	100.000	125.7	126.3	4.1	-1.3	0.5	0.4	0.5
Europe (Dec. 2006=100).....	32.849	114.3	115.0	3.6	-1.7	0.1	-0.5	0.6
Inbound Air Freight	100.000	147.2	149.4	10.8	-1.4	1.2	0.3	1.5
Europe (Dec. 2003=100).....	22.397	124.5	127.0	0.5	-1.3	3.8	1.4	2.0
Asia.....	67.497	137.1	137.9	14.8	-0.6	0.6	0.1	0.6
Outbound Air Freight	100.000	122.8	124.3	10.6	-0.7	0.1	0.9	1.2
Europe (Dec. 2003=100).....	40.962	141.3	143.8	11.1	-0.7	0.2	-0.2	1.8
Asia.....	41.978	111.6	112.9	9.6	-0.7	0.1	1.3	1.2
Air Passenger Fares								
Import Air Passenger Fares	100.000	160.9	168.6	14.9	-1.3	-4.1	-3.1	4.8
Europe.....	42.960	177.0	187.2	17.3	-3.9	-5.9	-3.0	5.8
Asia.....	28.162	140.1	145.5	12.4	0.8	-4.5	-6.4	3.9
Latin America/Caribbean.....	12.746	142.8	150.0	24.7	3.5	1.0	-2.8	5.0
Export Air Passenger Fares	100.000	172.9	171.0	23.1	5.4	1.2	-8.1	-1.1
Europe.....	33.549	216.2	214.6	23.8	3.1	-6.6	-6.8	-0.7
Asia.....	32.132	165.4	155.2	35.8	5.5	19.4	-15.4	-6.2
Latin America/Caribbean.....	20.590	168.2	176.4	23.6	2.1	-2.3	-0.5	4.9

¹ Relative importance figures are based on 2008 trade values.

NOTES: Data may be revised in each of the three months after original publication.

Dash = Not available

TECHNICAL NOTE

Import and Export Merchandise and Services Price Indexes -- All indexes use a modified Laspeyres formula and are not seasonally adjusted. Price indexes are reweighted annually, with a two-year lag in the weights. Published series use a base year of 2000=100 where possible. More detailed index series and additional information may be obtained at <http://www.bls.gov/mxp>, or by calling (202) 691-7101.

Merchandise Goods Classification Systems -- The merchandise price indexes are published using three classification systems. Items are classified by end use according to the Bureau of Economic Analysis Classification System, by industry according to the North American Industry Classification System (NAICS), and by product category according to the Harmonized System (HS). While classification by end use and product category are self-explanatory, some notes are in order for classifying items by industry. In the NAICS imports and exports tables, items are classified by output industry, not input industry. As an example, NAICS import index 326 (plastics and rubber products manufacturing) include outputs such as manufactured plastic rather than inputs such as petroleum. The NAICS classification structure also matches the classification system used by the PPI (Producer Price Index) to produce the NAICS primary products indexes.

Import Price Indexes -- Products have been classified by the Harmonized Tariff Schedule of the United States Annotated (TSUSA). Import prices are based on U.S. dollar prices paid by the U.S. importer. The prices are generally either "free on board" (f.o.b.) foreign port or "cost, insurance, and freight" (c.i.f.) U.S. port transaction prices, depending on the practices of the individual industry. The index for crude petroleum is calculated from data collected by the U.S. Department of Energy.

Export Price Indexes -- Products have been classified by the Harmonized Schedule B classification system of the U.S. Bureau of the Census. The prices used are generally either "free alongside ship" (f.a.s.) factory or "free on board" (f.o.b.) transaction prices, depending on the practices of the individual industry. Prices used in the grain index, excluding rice, are obtained from the U.S. Department of Agriculture.

Services Price Indexes -- Starting in September 2008 the Import Air Passenger Fares Indexes represent changes in the average revenue per passenger received by foreign carriers from U.S. residents and are calculated from data obtained from an airline consulting service. These data include tickets sold by travel agencies and travel websites. Tickets sold directly by the airlines are excluded, as are frequent flyer tickets generally. Starting in January 2008 the Export Air Passenger Fares Indexes represent changes in the average revenue per passenger received by U.S. carriers from foreign residents and are calculated from data collected directly from airlines. These data include frequent flyer tickets and those sold by consolidators. Taxes and fees are included in the Import Air Passenger Fares Index and excluded from the Export Air Passenger Fares Index. The Air Freight Indexes are calculated from data collected directly from airlines. These data exclude mail and passenger baggage. The scope of the service being priced is the movement of freight from airport to airport only, and does not include any ground transportation or port service. The Air Freight Indexes are presented using two definitions: Balance of Payments (which represent transactions between U.S. and foreign residents) and International (which represent transactions inbound to and outbound from the U.S.). Fact sheets specifying detailed information for each services industry are available at <http://www.bls.gov/mxp> under "MXP Publications."

Import Indexes by Locality of Origin -- Prices used in these indexes are a subset of the data collected for the Import Price Indexes. Beginning with January 2002, the indexes are defined by locality of origin using a nomenclature based upon the North American Industry Classification System (NAICS). Nonmanufactured goods are defined as NAICS 11 and 21 and manufactured goods are defined as NAICS 31-33.

Revision Policy -- To reflect the availability of late reports and corrections by respondents, monthly data may be revised in each of the three months after original publication. After three months, no further data revisions take place. So, for example, data released in the January release will be subject to revision in the releases for February, March, and April.

Uses of the Data -- The primary use of the indexes is to deflate trade statistics, notably the foreign trade sector of the National Income and Product Accounts constructed by the Department of Commerce. Other published indexes are useful for general market analysis. For trade in international services, Balance of Payments indexes are used for deflating National Income and Product Accounts, while International indexes are more appropriate for market analysis. Merchandise and services indexes also can be used to study U.S. competitiveness and to compute price elasticities, and the merchandise import indexes by country or region of origin are useful in terms of trade analysis.

E-Mail Subscription -- The U.S. Import and Export Price Indexes news release is available through an e-mail subscription service at (<http://www.bls.gov/bls/list.htm>).

Additional Information -- More detailed data are available on the Import/Export Price Indexes home page at (<http://www.bls.gov/mxp>). Flat Files and the FTP server are available for users requiring access to either a large volume of time series data or other related documentation. The FTP site can be accessed at <ftp://ftp.bls.gov>. For technical assistance in using the BLS Internet site, send e-mail to (labstat.helpdesk@bls.gov). For Import/Export Price Index data requests, send e-mail to (mxpinfo@bls.gov).

Information from this release will be made available to sensory impaired individuals upon request. Voice phone: 202-691-5200; Federal Relay Service: 1-800-877-8339.