

Transmission of material in this release is embargoed until
8:30 a.m. (EDT) Thursday, August 13, 2015

USDL-15-1560

Technical information: (202) 691-7101 • MXPinfo@bls.gov • www.bls.gov/mxp
Media contact: (202) 691-5902 • PressOffice@bls.gov

U.S. IMPORT AND EXPORT PRICE INDEXES – JULY 2015

U.S. import prices declined 0.9 percent in July, after recording no change the previous month, the U.S. Bureau of Labor Statistics reported today. Both fuel prices and nonfuel prices contributed to the July decrease. The price index for U.S. exports fell 0.2 percent in July following a 0.3-percent drop in June.

Chart 1. One-month percent change in the Import Price Index: July 2014 – July 2015

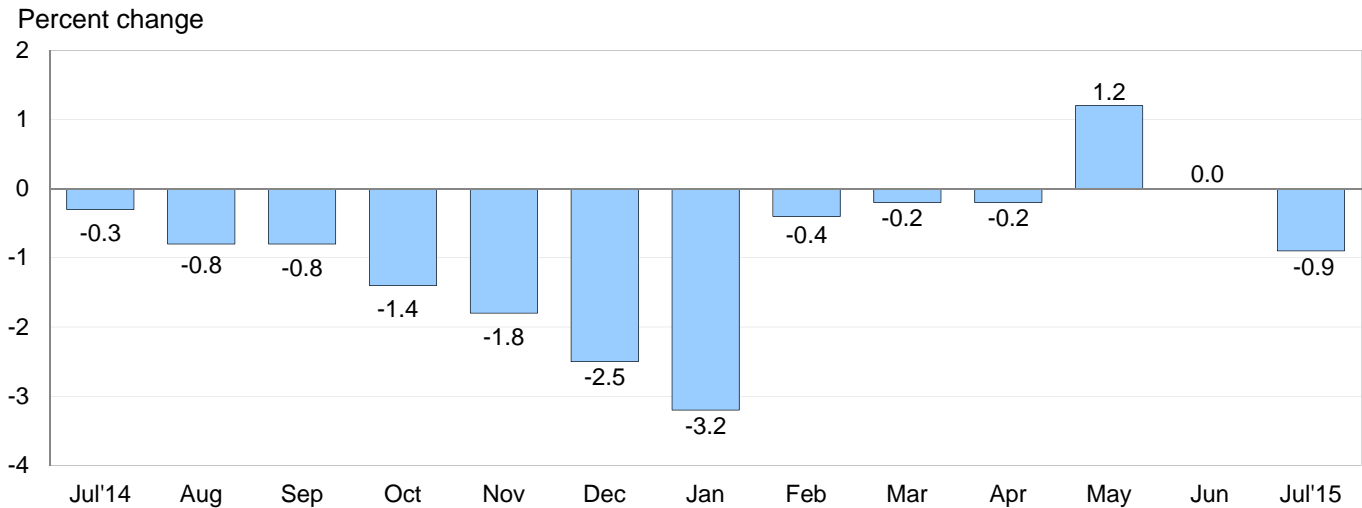
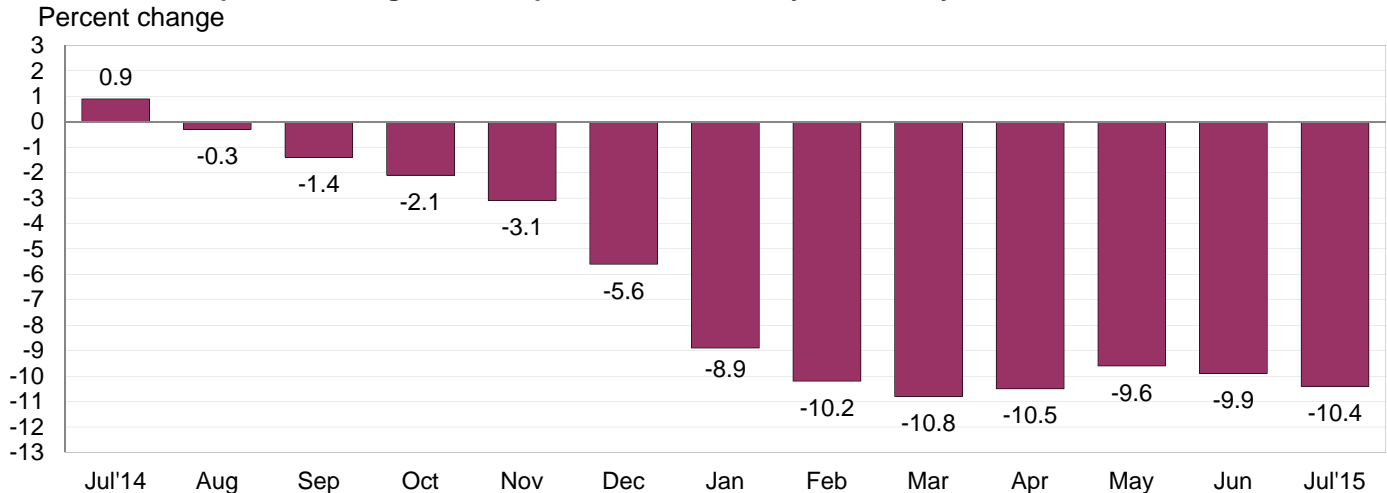


Chart 2. 12-month percent change in the Import Price Index: July 2014 – July 2015



All Imports: Import prices fell 0.9 percent in July, the first monthly decline since the index decreased 0.2 percent in April and the largest 1-month drop since a 3.2-percent decline in January. A downturn in fuel prices in July drove much of the overall decrease, although a continued downward trend in nonfuel prices also supported the drop. The price index for overall imports decreased 10.4 percent for the year ended in July, and has not recorded a 12-month advance since the index rose 0.9 percent in July 2014.

Fuel Imports: Prices for import fuel declined 5.7 percent in July, after rising 16.3 percent between February and June. The July drop was led by a 5.9-percent drop in petroleum prices that followed a 1.6-percent increase the previous month. Natural gas prices also reversed direction in July, falling 2.0 percent, after recording a 2.4-percent advance in June. Fuel prices declined 42.7 percent over the past year. The price indexes for petroleum and natural gas also fell between July 2014 and July 2015, decreasing 43.4 percent and 42.8 percent, respectively.

All Imports Excluding Fuel: The price index for nonfuel imports fell 0.3 percent in July and has not recorded a monthly advance since the index ticked up 0.1 percent in July 2014. In July 2015, lower prices for nonfuel industrial supplies and materials, consumer goods, and capital goods all contributed to the overall decrease. Prices for nonfuel imports also declined over the past 12 months, falling 2.6 percent. The drop was the largest year-over-year decrease since the index fell 3.1 percent for the 12 months ended in October 2009. Lower prices over the past year for finished goods; nonfuel industrial supplies and materials; and foods, feeds, and beverages all contributed to the 12-month decline for nonfuel import prices in July.

Table A. Percent change in Import and Export Price Indexes, selected categories

Month	IMPORTS			EXPORTS		
	All imports	Fuel imports	Nonfuel imports	All exports	Agricultural exports	Non-agricultural exports
2014						
July.....	-0.3	-1.5	0.1	0.1	-1.8	0.2
August.....	-0.8	-3.8	0.0	-0.5	-3.1	-0.2
September.....	-0.8	-3.6	-0.2	-0.4	-1.6	-0.2
October.....	-1.4	-6.8	-0.1	-0.9	-2.2	-0.7
November.....	-1.8	-9.3	-0.3	-0.9	0.1	-1.0
December.....	-2.5	-15.0	-0.1	-0.9	-0.7	-1.0
2015						
January.....	-3.2	-20.1	-0.7	-1.7	-1.4	-1.8
February.....	-0.4	-1.9	-0.2	-0.2	-2.2	0.2
March.....	-0.2	1.5	-0.4	0.0	-1.6	0.2
April.....	-0.2	1.8 ^r	-0.3	-0.6 ^r	-0.9	-0.7
May.....	1.2	10.8	0.0	0.5 ^r	-1.3 ^r	0.7
June.....	0.0 ^r	1.6 ^r	-0.2	-0.3 ^r	-1.6 ^r	-0.2 ^r
July.....	-0.9	-5.7	-0.3	-0.2	0.8	-0.4
July 2013 to 2014.....	0.9	2.9	0.5	0.4	-2.7	0.7
July 2014 to 2015.....	-10.4	-42.7	-2.6	-6.1	-14.6	-5.1

r Revised

Chart 3. One-month percent change in the Export Price Index: July 2014 – July 2015

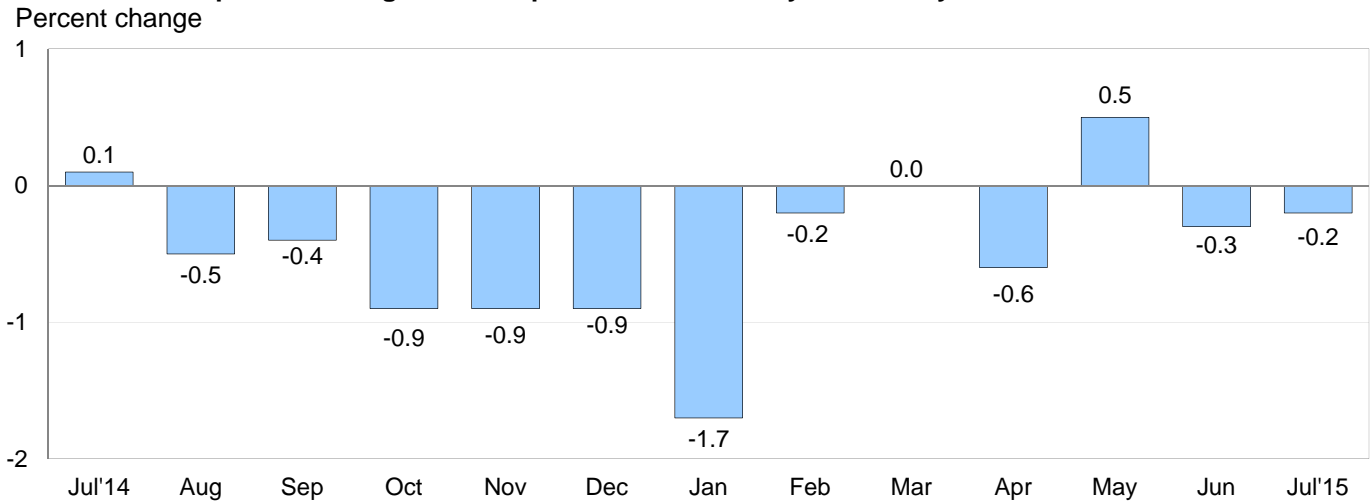
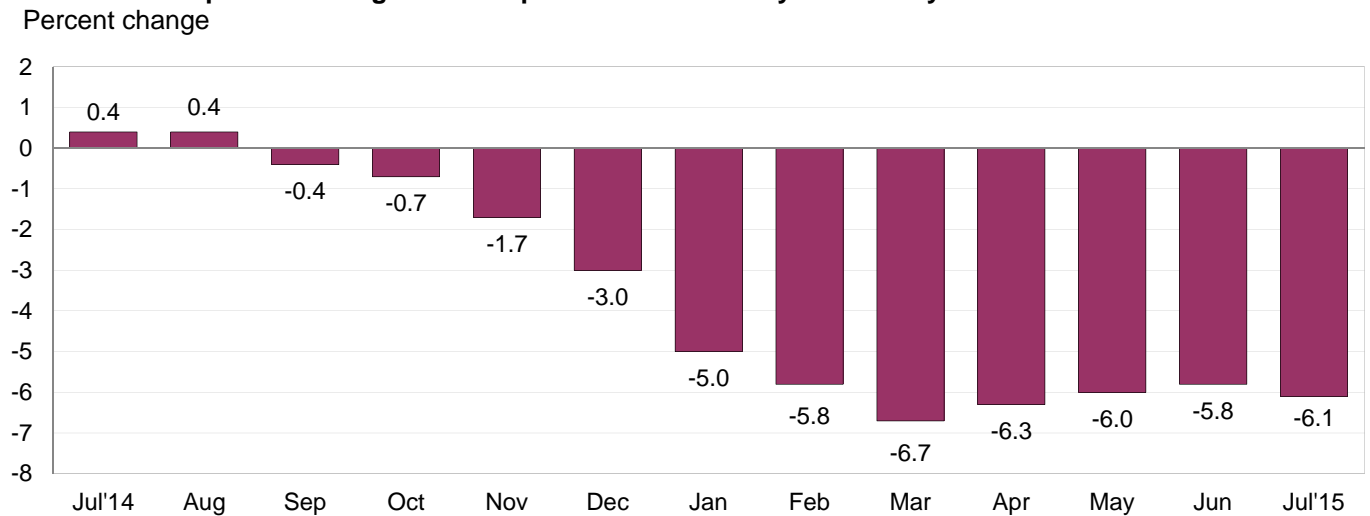


Chart 4. 12-month percent change in the Export Price Index: July 2014 – July 2015



All Exports: U.S. export prices fell 0.2 percent in July as decreasing nonagricultural prices more than offset an upturn in agricultural prices. The July drop followed a 0.3-percent decrease in June and a 0.5-percent increase in May. The price index for exports also declined over the past year, falling 6.1 percent, and has not recorded a 12-month increase since the index rose 0.4 percent in August 2014.

All Exports Excluding Agriculture: The price index for nonagricultural exports decreased 0.4 percent in July, after declining 0.2 percent the previous month. Falling prices for each of the major finished goods categories and nonagricultural industrial supplies and materials contributed to the July decrease. Nonagricultural exports fell 5.1 percent over the past 12 months, driven by a 13.6-percent decrease in the price index for nonagricultural industrial supplies and materials.

Agricultural Exports: Prices for agricultural exports increased 0.8 percent in July following a 1.6-percent decline in June. The July advance is the first monthly rise since the index ticked up 0.1 percent in November 2014, and the largest 1-month increase since the index rose 1.5 percent in April 2014. The July upturn was led by an 8.8-percent rise in soybean prices, a 7.0-percent advance in wheat prices, and a 10.7-percent increase in corn prices. The price index for agricultural exports fell 14.6 percent over the past year.

SELECTED JULY HIGHLIGHTS

Import Prices

Imports by Locality of Origin: Prices for imports from China fell 0.2 percent in July following a 0.1-percent drop the previous month. Import prices from China have not recorded a monthly increase since the index advanced 0.1 percent in December, and the index declined 1.2 percent over the past 12 months. The price index for imports from Japan declined 0.3 percent in July, after a 0.5-percent drop in June. Prices for imports from Japan fell 3.0 percent for the year ended in July. Import prices from Canada, Mexico, and the European Union also decreased in July, led by falling prices for fuel. In July, prices for imports from Canada declined 1.7 percent, import prices from Mexico decreased 0.8 percent, and the price index for imports from the European Union edged down 0.1 percent.

Nonfuel Industrial Supplies and Materials: Nonfuel industrial supplies and materials prices declined 0.8 percent in July following a 0.4-percent decrease the previous month. Falling metals prices, which decreased 3.4 percent in July and 1.4 percent in June, drove the decline in each month.

Finished Goods: Both consumer goods prices and capital goods prices fell in July, while the price index for automotive vehicles recorded no change. Consumer goods prices declined 0.3 percent led by lower prices for household goods and medicinal, dental, and pharmaceutical materials. Prices for capital goods decreased 0.2 percent driven by lower prices for computers, peripherals, and semiconductors.

Foods, Feeds, and Beverages: The price index for import foods, feeds, and beverages recorded no change in July, after decreasing 0.7 percent in June.

Transportation Services: Import air passenger fares fell 4.1 percent in July following an 8.9-percent increase in June and a 1.9-percent rise in May. The July downturn was led by a 6.9-percent decline in European fares and a 3.2-percent decrease in Asian fares. The index for import air passenger fares fell 2.4 percent for the year ended in July. Import air freight prices decreased 3.1 percent in July, after declining 0.8 percent in June. The July drop was led by lower Asian air freight prices and was the largest monthly decline since the index fell 3.3 percent in January 2012. Prices for import air freight decreased 5.9 percent over the past year.

Export Prices

Nonagricultural Industrial Supplies and Materials: Nonagricultural industrial supplies and materials prices declined 1.1 percent in July following a 0.3-percent drop the previous month. The July decrease was driven by lower prices for metals, fuel, and chemicals.

Finished Goods: Each of the major finished goods categories recorded declines in July. Consumer goods prices and prices for automotive vehicles each fell 0.2 percent. The price index for capital goods edged down 0.1 percent.

Transportation Services: Export air passenger fares increased 3.1 percent in July, led by a 4.0-percent advance in European fares. The rise in overall export air passenger fares is the largest monthly increase since the index advanced 8.3 percent in December 2014. Despite the July rise, export air passenger fares fell 15.5 percent over the past 12 months. Export air freight prices rose 0.4 percent in July and fell 0.9 percent over the past year.

Import and Export Price Index data for August 2015 are scheduled for release on Thursday, September 10, 2015 at 8:30 a.m. (EDT).

Table 1. U.S. import price indexes and percent changes for selected categories of goods: July 2014 to July 2015

[2000=100, unless otherwise noted]

Description	End Use	Relative importance June 2015 ¹	Index		Percent change				
			June 2015	July 2015	Annual July 2014 to July 2015	Monthly			
						Mar. 2015 to Apr. 2015	Apr. 2015 to May 2015	May 2015 to June 2015	June 2015 to July 2015
All commodities		100.000	126.6	125.5	-10.4	-0.2	1.2	0.0	-0.9
All imports excluding food and fuels (Dec. 2010=100)		81.967	100.0	99.7	-2.6	-0.3	0.0	-0.1	-0.3
All imports excluding petroleum		88.577	112.8	112.5	-2.8	-0.4	0.0	-0.2	-0.3
All imports excluding fuels (Dec. 2001=100)		87.833	116.9	116.6	-2.6	-0.3	0.0	-0.2	-0.3
Foods, feeds, & beverages	0	5.866	175.5	175.5	-1.7	-0.9	0.2	-0.7	0.0
Agricultural foods, feeds & beverages, excluding distilled beverages.....	00	4.583	195.0	195.1	-0.6	-0.8	0.9	-0.6	0.1
Nonagricultural foods (fish, distilled beverages).....	01	1.283	131.0	130.8	-5.6	-1.3	-2.1	-1.2	-0.2
Industrial supplies & materials	1	25.501	186.0	180.2	-28.7	0.3	4.8	0.6	-3.1
Industrial supplies & materials excluding petroleum.....		14.079	148.4	147.1	-9.3	-1.2	-0.1	-0.3	-0.9
Industrial supplies & materials excluding fuels (Dec. 2001=100).....		13.335	168.4	167.1	-7.7	-0.8	-0.1	-0.4	-0.8
Industrial supplies & materials, durable....		7.857	155.2	152.9	-10.1	-1.1	-0.4	-0.6	-1.5
Industrial supplies & materials nondurable excluding petroleum.....		5.478	139.9	139.7	-8.2	-1.3	0.2	0.1	-0.1
Fuels & lubricants.....	10	12.166	209.7	197.8	-42.7	1.8	10.8	1.6	-5.7
Petroleum & petroleum products.....	100	11.423	229.7	216.2	-43.4	2.4	11.7	1.6	-5.9
Crude.....	10000	8.375	236.4	218.2	-45.2	5.0	13.4	2.8	-7.7
Fuels, n.e.s.-coals & gas.....	101	0.544	97.2	95.8	-35.4	-8.8	-0.7	1.5	-1.4
Gas-natural.....	10110	0.388	80.6	79.0	-42.8	-12.0	-0.9	2.4	-2.0
Paper & paper base stocks.....	11	0.584	110.3	109.9	-3.2	-0.4	-0.1	-0.6	-0.4
Materials associated with nondurable supplies & materials.....	12	4.962	161.2	161.7	-4.2	-0.5	0.3	0.2	0.3
Selected building materials.....	13	1.186	136.6	137.7	-3.2	-0.8	-1.2	0.8	0.8
Unfinished metals related to durable goods.....	14	3.265	207.2	200.1	-18.3	-1.9	-0.3	-1.4	-3.4
Finished metals related to durable goods.....	15	1.681	152.6	151.5	-4.5	-0.2	-0.3	-0.5	-0.7
Nonmetals related to durable goods.....	16	1.657	109.7	109.7	-2.1	-0.4	0.2	-0.3	0.0
Capital goods	2	27.185	90.9	90.7	-2.1	-0.3	-0.1	-0.1	-0.2
Electric generating equipment.....	20	3.314	118.2	117.9	-2.2	-0.8	-0.1	0.0	-0.3
Nonelectrical machinery.....	21	21.470	83.4	83.2	-2.3	-0.2	-0.2	-0.1	-0.2
Transportation equipment excluding motor vehicles (Dec. 2001=100).....	22	2.400	137.0	137.0	0.6	0.0	0.1	0.1	0.0
Automotive vehicles, parts & engines	3	15.113	111.1	111.1	-1.4	-0.1	0.0	-0.1	0.0
Consumer goods, excluding automobiles	4	26.334	107.4	107.1	-1.1	-0.1	0.0	0.0	-0.3
Nondurables, manufactured.....	40	12.557	119.1	118.8	0.1	0.0	0.0	0.0	-0.3
Durables, manufactured.....	41	12.313	95.7	95.5	-2.2	-0.3	0.0	0.0	-0.2
Nonmanufactured consumer goods.....	42	1.464	118.5	117.6	-3.1	-0.1	0.3	0.2	-0.8

¹ Relative importance figures are based on 2013 trade values.

NOTES: Data may be revised in each of the three months after original publication.

Dash = Not available

Table 2. U.S. export price indexes and percent changes for selected categories of goods: July 2014 to July 2015

[2000=100, unless otherwise noted]

Description	End Use	Relative importance June 2015 ¹	Index		Percent change				
			June 2015	July 2015	Annual July 2014 to July 2015	Monthly			
						Mar. 2015 to Apr. 2015	Apr. 2015 to May 2015	May 2015 to June 2015	June 2015 to July 2015
All commodities.....		100.000	125.3	125.0	-6.1	-0.6	0.5	-0.3	-0.2
Agricultural commodities.....		8.778	184.3	185.8	-14.6	-0.9	-1.3	-1.6	0.8
All exports excluding food and fuels (Dec. 2010=100).....		83.711	100.5	100.1	-2.3	-0.2	0.0	-0.1	-0.4
Nonagricultural commodities.....		91.221	120.9	120.4	-5.1	-0.7	0.7	-0.2	-0.4
Foods, feeds, & beverages.....	0	8.085	184.5	187.9	-14.4	-1.1	-1.3	-2.3	1.8
Agricultural foods, feeds & beverages, excluding distilled beverages.....	00	7.443	185.8	188.7	-15.3	-1.1	-1.0	-1.6	1.6
Nonagricultural foods (fish, distilled beverages).....	01	0.642	178.6	187.1	-1.2	-2.0	-3.9	-9.7	4.8
Industrial supplies & materials.....	1	31.395	155.8	154.0	-13.5	-1.5	2.1	-0.4	-1.2
Industrial supplies & materials, durable....		10.994	159.7	157.1	-8.9	-0.4	0.0	-0.2	-1.6
Industrial supplies & materials, nondurable.....		20.400	154.6	153.1	-15.8	-2.0	3.1	-0.5	-1.0
Agricultural industrial supplies & materials.....	10	1.335	180.4	174.7	-9.6	-0.2	-2.3	-1.6	-3.2
Nonagricultural industrial supplies & materials.....		30.060	155.1	153.4	-13.6	-1.6	2.2	-0.3	-1.1
Fuels & lubricants.....	11	8.203	186.2	184.3	-28.7	-5.8	8.0	-0.4	-1.0
Nonagricultural supplies & materials excluding fuels & building materials.....	12	20.874	157.8	155.9	-6.9	0.0	0.3	-0.3	-1.2
Selected building materials.....	13	0.983	115.8	115.9	-6.2	-0.5	-0.7	-1.7	0.1
Capital goods.....	2	37.863	107.5	107.4	0.2	-0.2	-0.1	0.0	-0.1
Electrical generating equipment.....	20	3.826	114.5	114.1	-1.6	-0.2	-0.1	0.0	-0.3
Nonelectrical machinery.....	21	25.877	95.1	94.9	-0.6	-0.4	-0.1	0.0	-0.2
Transportation equipment excluding motor vehicles (Dec. 2001=100).....	22	8.160	161.5	161.7	3.5	0.2	0.2	0.2	0.1
Automotive vehicles, parts & engines.....	3	10.172	114.0	113.8	-0.4	0.0	0.1	0.0	-0.2
Consumer goods, excluding automotives.....	4	12.484	112.8	112.6	-2.4	-0.4	0.0	0.3	-0.2
Nondurables, manufactured.....	40	5.548	108.8	108.6	-3.4	-0.4	0.1	0.3	-0.2
Durables, manufactured.....	41	5.322	110.6	110.5	-1.3	-0.5	-0.1	0.3	-0.1

¹ Relative importance figures are based on 2013 trade values.

NOTES: Data may be revised in each of the three months after original publication.

Dash = Not available

Table 3. U.S. import price indexes and percent changes for selected categories of goods: July 2014 to July 2015

[December 2005=100, unless otherwise noted]

Description	NAICS	Relative importance June 2015 ¹	Index		Percent change				
			June 2015	July 2015	Annual	Monthly			
					July 2014 to July 2015	Mar. 2015 to Apr. 2015	Apr. 2015 to May 2015	May 2015 to June 2015	June 2015 to July 2015
Nonmanufactured articles.....		11.026	110.6	103.9	-40.1	2.5	9.9	1.9	-6.1
Agriculture, forestry, fishing and hunting.....	11	2.029	176.7	175.7	-1.2	-0.1	1.7	-0.7	-0.6
Crop production.....	111	1.625	186.6	185.2	0.4	0.2	2.6	-1.1	-0.8
Animal production (Dec. 2014=100).....	112	0.228	94.2	92.3	—	0.3	-2.1	2.5	-2.0
Forestry and logging (Dec. 2012=100).....	113	0.108	63.9	64.9	-17.5	-2.1	-0.6	-0.2	1.6
Mining.....	21	8.997	103.0	95.4	-44.8	3.1	12.2	2.5	-7.4
Mining (except oil and gas) (Dec. 2006=100).....	212	0.211	101.9	97.6	-20.8	-11.9	0.3	-0.5	-4.2
Manufactured articles.....		88.658	111.8	111.5	-4.3	-0.4	0.2	-0.2	-0.3
Manufactured goods, part 1.....	31	11.795	124.4	124.2	-1.4	-0.3	-0.2	-0.2	-0.2
Food manufacturing.....	311	3.258	152.3	152.0	-5.5	-0.9	-0.6	-0.7	-0.2
Beverage and tobacco product manufacturing.....	312	1.072	117.7	118.3	0.8	-0.3	0.0	0.2	0.5
Textile mills (Dec. 2011=100).....	313	0.400	101.2	100.8	-1.6	-0.7	-0.1	0.0	-0.4
Textile product mills.....	314	0.876	112.4	111.9	-2.1	-0.3	-0.1	-0.1	-0.4
Apparel manufacturing.....	315	4.317	112.1	111.9	0.6	0.0	0.0	-0.1	-0.2
Leather and allied product manufacturing.....	316	1.872	124.2	124.3	0.6	-0.1	0.1	0.0	0.1
Manufactured goods, part 2.....	32	17.500	123.9	123.6	-10.2	-0.7	1.2	-0.2	-0.2
Wood product manufacturing.....	321	0.705	114.1	115.5	-5.2	-1.3	-2.0	1.2	1.2
Paper manufacturing.....	322	1.087	108.4	107.9	-2.9	-0.5	0.1	-0.6	-0.5
Petroleum and coal products manufacturing.....	324	2.905	102.8	101.9	-37.0	-3.0	7.9	-1.2	-0.9
Chemical manufacturing.....	325	9.469	134.4	134.3	-2.0	-0.1	0.1	0.0	-0.1
Plastics and rubber products manufacturing.....	326	2.161	119.5	118.8	-2.5	-0.5	-0.1	-0.2	-0.6
Nonmetallic mineral product manufacturing.....	327	0.968	131.2	131.1	0.5	-0.1	0.1	0.7	-0.1
Manufactured goods, part 3.....	33	59.363	105.3	104.9	-3.0	-0.3	-0.2	-0.1	-0.4
Primary metal manufacturing.....	331	3.934	138.4	134.3	-16.7	-1.8	-0.7	-1.3	-3.0
Fabricated metal product manufacturing.....	332	2.981	126.1	125.9	-0.9	-0.2	0.0	-0.1	-0.2
Machinery manufacturing.....	333	7.122	119.0	118.7	-2.2	-0.5	0.2	0.0	-0.3
Computer and electronic product manufacturing.....	334	17.461	78.0	77.9	-2.5	-0.1	-0.3	-0.3	-0.1
Electrical equipment, appliance, and component manufacturing.....	335	4.637	117.6	116.9	-1.8	-0.8	-0.1	0.0	-0.6
Transportation equipment manufacturing.....	336	16.249	110.1	110.2	-1.1	-0.1	0.0	-0.1	0.1
Furniture and related product manufacturing.....	337	1.562	116.1	115.9	-0.3	-0.1	0.0	0.1	-0.2
Miscellaneous manufacturing.....	339	5.418	120.1	119.9	-2.1	-0.3	-0.1	0.1	-0.2

¹ Relative importance figures are based on 2013 trade values.

NOTES: Data may be revised in each of the three months after original publication.

Dash = Not available

Table 4. U.S. export price indexes and percent changes for selected categories of goods: July 2014 to July 2015

[December 2005=100, unless otherwise noted]

Description	NAICS	Relative importance June 2015 ¹	Index		Percent change				
			June 2015	July 2015	Annual July 2014 to July 2015	Monthly			
						Mar. 2015 to Apr. 2015	Apr. 2015 to May 2015	May 2015 to June 2015	June 2015 to July 2015
Nonmanufactured articles.....		6.327	131.6	135.2	-14.2	-2.2	-0.4	-2.1	2.7
Agriculture, forestry, fishing and hunting.....	11	4.163	162.5	168.7	-10.9	0.4	-1.7	-1.9	3.8
Crop production.....	111	3.932	168.9	175.4	-11.0	0.6	-1.6	-1.3	3.8
Mining.....	21	2.164	73.2	73.7	-19.3	-7.1	1.9	-2.3	0.7
Mining (except oil and gas).....	212	1.206	89.1	86.5	-11.6	-1.0	1.5	-1.7	-2.9
Manufactured articles.....		92.103	115.1	114.7	-5.2	-0.7	0.5	-0.2	-0.3
Manufactured goods, part 1.....	31	6.903	139.5	137.9	-13.2	-1.5	-1.0	-1.2	-1.1
Food manufacturing.....	311	4.712	157.2	155.5	-16.2	-2.1	-0.9	-1.4	-1.1
Beverage and tobacco product manufacturing.....	312	0.586	111.6	109.7	-4.6	1.3	-2.5	-3.1	-1.7
Manufactured goods, part 2.....	32	24.748	116.5	115.7	-12.5	-1.5	2.5	-0.3	-0.7
Paper manufacturing.....	322	1.869	123.9	124.1	-0.8	-0.2	0.0	0.2	0.2
Petroleum and coal products manufacturing.....	324	5.735	112.5	110.5	-32.7	-6.6	10.2	-0.1	-1.8
Chemical manufacturing.....	325	13.303	121.2	120.5	-6.2	0.3	0.6	-0.3	-0.6
Plastics and rubber products manufacturing.....	326	2.237	118.5	118.0	-0.8	-0.5	0.1	-0.3	-0.4
Nonmetallic mineral product manufacturing.....	327	0.818	112.4	112.4	-0.8	-0.2	-0.2	0.2	0.0
Manufactured goods, part 3.....	33	60.452	112.2	112.0	-0.9	-0.2	-0.1	-0.1	-0.2
Primary metal manufacturing.....	331	4.731	139.2	137.2	-9.1	-0.6	-0.6	-0.8	-1.4
Fabricated metal product manufacturing...	332	2.987	129.0	129.2	0.7	0.0	-0.1	-0.2	0.2
Machinery manufacturing.....	333	11.473	125.4	125.3	1.1	0.0	0.2	0.1	-0.1
Computer and electronic product manufacturing.....	334	14.145	85.6	85.4	-2.4	-0.7	-0.5	-0.1	-0.2
Electrical equipment, appliance, and component manufacturing.....	335	3.732	114.7	114.3	-0.4	0.2	0.1	-0.3	-0.3
Transportation equipment manufacturing..	336	17.430	121.6	121.6	1.3	0.1	0.2	0.1	0.0
Furniture and related product manufacturing (Dec. 2011=100).....	337	0.379	109.1	109.2	1.1	0.8	1.0	-0.5	0.1
Miscellaneous manufacturing.....	339	5.576	123.5	123.2	-1.4	-0.5	-0.1	0.4	-0.2

¹ Relative importance figures are based on 2013 trade values.

NOTES: Data may be revised in each of the three months after original publication.

Dash = Not available

Table 5. U.S. import price indexes and percent changes for selected categories of goods: July 2014 to July 2015

[2000=100, unless otherwise noted]

Description	Harmonized system	Relative importance June 2015 ¹	Index		Percent change				
			June 2015	July 2015	Annual July 2014 to July 2015	Monthly			
						Mar. 2015 to Apr. 2015	Apr. 2015 to May 2015	May 2015 to June 2015	June 2015 to July 2015
Live animals; animal products.....	I	1.322	185.5	185.8	-6.8	-1.0	-1.7	-0.7	0.2
Meat and edible meat offal.....	02	0.312	235.2	241.7	-8.7	-0.5	0.4	-2.4	2.8
Fish and crustaceans, molluscs and other aquatic invertebrates.....	03	0.666	127.5	127.4	-8.4	-1.8	-2.9	-1.6	-0.1
Vegetable products.....	II	1.940	201.7	200.9	1.1	-1.5	3.5	-0.9	-0.4
Edible vegetables, roots, and tubers.....	07	0.539	459.9	469.9	28.6	-4.4	14.1	-1.3	2.2
Edible fruit and nuts; peel of citrus fruit or melons.....	08	0.477	95.5	97.0	-0.9	-0.3	-1.0	-3.0	1.6
Coffee, tea, mate and spices.....	09	0.370	242.1	232.3	-7.0	-0.2	-1.6	0.7	-4.0
Animal or vegetable fats and oils (Dec. 2009=100).....	III	0.268	105.9	104.2	-10.4	-4.1	1.6	0.5	-1.6
Prepared foodstuffs, beverages, and tobacco.....	IV	2.764	160.6	161.6	-0.6	-0.2	-0.4	-0.2	0.6
Sugars and sugar confectionary (Dec. 2012=100).....	17	0.184	90.7	91.0	0.9	-0.7	-0.1	-0.3	0.3
Cocoa and cocoa preparations (Dec. 2009=100).....	18	0.248	111.1	113.2	-1.1	0.0	2.2	0.5	1.9
Preparations of cereals, flour, starch or milk; bakers' wares (Dec. 2007=100).....	19	0.276	132.0	132.0	0.1	-0.2	-0.2	0.0	0.0
Preparations of vegetables, fruit, nuts, or other parts of plants.....	20	0.324	155.0	155.4	-7.6	-0.8	-2.2	-1.9	0.3
Beverages, spirits, and vinegar.....	22	1.040	127.5	128.2	0.3	-0.4	0.1	0.0	0.5
Mineral products.....	V	12.072	210.9	198.7	-42.9	1.5	10.9	1.7	-5.8
Mineral fuels, oils and residuals, bituminous substances and mineral waxes.....	27	11.832	208.1	196.0	-43.2	1.8	11.1	1.7	-5.8
Products of the chemical or allied industries.....	VI	8.617	148.3	148.4	-2.7	0.2	0.1	-0.3	0.1
Inorganic chemicals.....	28	0.655	296.8	291.4	-5.8	1.0	-0.7	-1.8	-1.8
Organic chemicals.....	29	2.439	123.6	126.0	-7.6	0.6	0.3	-0.5	1.9
Pharmaceutical products.....	30	3.468	136.7	136.1	1.3	0.2	0.0	0.1	-0.4
Fertilizers (Dec. 2009=100).....	31	0.382	111.7	111.3	3.9	-2.0	1.8	-1.8	-0.4
Tanning extracts; dye, pigments, varnish, paints & putty (Dec. 2011=100).....	32	0.204	99.5	98.6	-3.9	-1.7	0.0	1.2	-0.9
Miscellaneous chemical products.....	38	0.544	90.0	89.9	-3.5	0.3	-0.6	0.0	-0.1
Plastics and articles thereof; rubber and articles thereof.....	VII	3.375	142.1	141.4	-3.9	-0.8	-0.1	-0.1	-0.5
Plastics and articles thereof.....	39	2.196	146.4	145.8	-2.9	-0.8	-0.1	-0.2	-0.4
Rubber and articles thereof.....	40	1.179	136.1	135.3	-5.7	-0.9	-0.1	0.1	-0.6
Raw hides, skins, leather, furskins, travel goods, etc.....	VIII	0.715	128.1	128.1	0.1	-0.1	-0.1	0.0	0.0
Articles of leather; travel goods, bags, etc. of various materials.....	42	0.675	130.8	130.8	0.3	0.0	-0.1	0.2	0.0
Wood, wood charcoal, cork, straw, basketware and wickerwork.....	IX	0.731	138.6	140.2	-5.1	-1.2	-1.9	1.1	1.2
Wood and articles of wood; wood charcoal (Dec. 2014=100).....	44	0.694	95.1	96.3	-	-1.2	-2.0	1.2	1.3
Woodpulp, recovered paper, and paper products.....	X	1.145	111.9	111.5	-1.9	-0.4	0.0	-0.1	-0.4
Paper and paperboard; articles of paper pulp, paper or paperboard.....	48	0.764	106.1	105.5	-1.6	-0.2	0.0	-0.1	-0.6
Textile and textile articles.....	XI	5.433	114.6	114.4	0.1	-0.1	0.0	-0.1	-0.2

See footnotes at end of table.

Table 5. U.S. import price indexes and percent changes for selected categories of goods: July 2014 to July 2015 — Continued

[2000=100, unless otherwise noted]

Description	Harmonized system	Relative importance June 2015 ¹	Index		Percent change				
			June 2015	July 2015	Annual July 2014 to July 2015	Monthly			
						Mar. 2015 to Apr. 2015	Apr. 2015 to May 2015	May 2015 to June 2015	June 2015 to July 2015
Articles of apparel and clothing accessories, knitted or crocheted.....	61	2.177	104.3	104.2	1.3	-0.1	0.1	0.0	-0.1
Articles of apparel and clothing accessories, not knitted or crocheted.....	62	1.948	120.1	119.9	0.3	0.0	0.0	-0.2	-0.2
Made-up or worn textile articles.....	63	0.633	106.6	105.8	-2.0	-0.1	-0.1	0.0	-0.8
Headgear, umbrellas, artificial flowers, etc...	XII	1.484	123.0	123.1	0.8	0.0	0.1	0.0	0.1
Footwear and parts of such articles.....	64	1.290	122.1	122.2	0.6	0.0	0.0	0.0	0.1
Stone, plaster, cement, asbestos, ceramics, glass etc.....	XIII	0.896	133.0	132.9	-0.1	-0.2	0.2	0.4	-0.1
Ceramic products.....	69	0.267	138.9	138.6	-2.1	-0.1	0.1	0.1	-0.2
Glass and glassware.....	70	0.313	129.8	129.8	0.2	0.2	0.2	0.2	0.0
Pearls, stones, precious metals, imitation jewelry, and coins.....	XIV	3.015	170.8	167.6	-9.8	-0.3	-0.5	-0.2	-1.9
Base metals and articles of base metals. ...	XV	5.247	168.1	165.3	-10.1	-1.3	-0.1	-0.9	-1.7
Iron and steel.....	72	1.075	181.5	177.8	-20.5	-4.9	-2.1	-0.6	-2.0
Articles of iron or steel.....	73	1.658	148.1	147.3	-4.8	-0.6	-0.2	-0.8	-0.5
Copper and articles thereof.....	74	0.475	299.8	282.8	-13.0	0.9	0.8	2.4	-5.7
Aluminum and articles thereof.....	76	0.731	131.5	129.7	-8.5	0.3	0.1	-3.5	-1.4
Tools, implements, cutlery, spoons and forks, of base metal; parts thereof.....	82	0.443	129.0	128.5	-0.5	-0.2	0.0	0.2	-0.4
Miscellaneous articles of base metal.....	83	0.516	138.4	138.4	1.1	-0.1	0.1	0.1	0.0
Machinery, electrical equipment, TV image and sound recorders, parts, etc.....	XVI	29.388	82.6	82.3	-2.5	-0.2	-0.1	-0.1	-0.4
Machinery and mechanical appliances; parts thereof.....	84	14.932	87.7	87.4	-2.5	-0.3	-0.2	-0.1	-0.3
Electrical machinery and equip, sound and TV recorders & reproducers, parts.....	85	14.456	77.6	77.5	-2.5	-0.3	-0.1	-0.1	-0.1
Vehicles, aircraft, vessels and associated transport equipment.....	XVII	13.636	114.6	114.7	-0.7	0.0	0.0	0.0	0.1
Motor vehicles and their parts.....	87	12.320	113.2	113.3	-0.8	0.0	0.0	0.0	0.1
Aircraft, spacecraft, and parts thereof (Dec. 2002=100).....	88	1.225	119.9	119.9	-0.2	-0.1	0.1	0.0	0.0
Optical, photo, measuring, medical & musical instruments; & timepieces.....	XVIII	3.858	103.7	103.6	-1.1	-0.4	0.0	0.0	-0.1
Optical, photographic, measuring and medical instruments.....	90	3.539	100.6	100.4	-1.1	-0.3	0.0	0.1	-0.2
Clocks and watches and parts thereof.....	91	0.258	141.9	142.7	-0.4	-0.7	-0.1	0.1	0.6
Miscellaneous manufactured articles.....	XX	3.986	112.8	112.9	-0.9	-0.2	-0.2	-0.2	0.1
Furniture & stuffed furnishings; lamps & lighting fittings, nesoi; prefab bldgs.....	94	2.399	117.3	117.3	-0.9	-0.3	-0.2	-0.3	0.0
Toys, games and sports equipment; parts and accessories thereof.....	95	1.332	104.8	104.8	-1.0	-0.1	-0.1	0.0	0.0
Miscellaneous manufactured articles.....	96	0.255	134.2	134.2	-0.6	-0.1	-0.1	0.0	0.0

¹ Relative importance figures are based on 2013 trade values.

NOTES: Data may be revised in each of the three months after original publication.

Dash = Not available

Table 6. U.S. export price indexes and percent changes for selected categories of goods: July 2014 to July 2015

[2000=100, unless otherwise noted]

Description	Harmonized system	Relative importance June 2015 ¹	Index		Percent change				
			June 2015	July 2015	Annual July 2014 to July 2015	Monthly			
						Mar. 2015 to Apr. 2015	Apr. 2015 to May 2015	May 2015 to June 2015	June 2015 to July 2015
Live animals; animal products.....	I	1.840	194.1	190.6	-24.3	-3.2	-1.7	-3.4	-1.8
Meat & edible meat offal (Dec. 2006=100)...	02	1.079	150.8	147.0	-26.2	-3.9	-1.3	-2.8	-2.5
Fish and crustaceans, molluscs and other aquatic invertebrates.....	03	0.398	206.9	212.5	2.9	-3.8	-2.1	-6.2	2.7
Vegetable products.....	II	3.904	206.1	213.2	-12.2	-0.3	-1.0	-2.0	3.4
Edible fruit and nuts; peel of citrus fruit or melons.....	08	1.122	175.2	171.4	2.1	-0.9	4.7	-3.2	-2.2
Cereals.....	10	0.981	194.4	210.8	-11.1	2.9	-9.1	0.9	8.4
Oilseeds and misc. grains, seeds, fruits, plants, straw and fodder.....	12	1.373	204.7	217.7	-22.4	-1.4	-0.1	-3.5	6.4
Animal or vegetable fats and oils (Dec. 2009=100).....	III	0.207	98.8	99.0	-13.7	-1.4	-0.3	3.9	0.2
Prepared foodstuffs, beverages, and tobacco.....	IV	2.913	153.1	152.4	-8.9	-0.7	-1.2	-1.4	-0.5
Preparations of vegetables, fruit, nuts or other parts of plants (Dec. 2009=100)....	20	0.401	118.1	118.3	0.2	-0.3	0.2	-0.3	0.2
Beverages, spirits, and vinegar (Dec. 2008=100).....	22	0.521	112.2	108.5	-2.1	0.3	0.2	1.4	-3.3
Residues and waste from the food industries; prepared animal feed.....	23	0.712	213.9	215.2	-18.5	-0.1	-4.5	-3.9	0.6
Mineral products.....	V	7.991	212.0	209.2	-29.5	-6.0	8.0	-1.0	-1.3
Ores, slag and ash (Dec. 2012=100).....	26	0.484	86.8	81.4	-15.7	-2.0	4.6	-4.3	-6.2
Mineral fuels, oils and residuals, bituminous substances and mineral waxes.....	27	7.322	205.3	203.1	-30.8	-6.4	8.6	-0.7	-1.1
Products of the chemical or allied industries.....	VI	10.916	143.9	143.1	-5.0	0.1	0.1	-0.1	-0.6
Inorganic chemicals.....	28	0.894	184.5	185.0	8.4	0.3	0.4	-0.6	0.3
Organic chemicals.....	29	2.959	146.8	144.2	-14.8	0.6	0.5	-0.1	-1.8
Pharmaceutical products.....	30	2.581	111.6	111.4	-4.0	-0.4	0.3	0.5	-0.2
Essential oils and resinoids; perfumery cosmetic or toilet preparations.....	33	0.792	136.8	136.7	2.3	0.5	0.1	-0.1	-0.1
Soap; lubricants; waxes, polishing or scouring products; candles, pastes.....	34	0.479	113.9	113.9	-2.4	-0.1	0.0	-0.4	0.0
Miscellaneous chemical products.....	38	1.894	152.0	151.4	-1.0	0.5	-0.3	-1.0	-0.4
Plastics and articles thereof; rubber and articles thereof.....	VII	5.166	143.1	142.8	-5.0	-0.4	0.4	-0.8	-0.2
Plastics and articles thereof.....	39	4.207	138.4	138.1	-4.9	-0.4	0.5	-1.1	-0.2
Rubber and articles thereof.....	40	0.959	162.8	162.2	-5.9	-0.3	-0.2	0.4	-0.4
Raw hides, skins, leather, furskins, travel goods, etc.....	VIII	0.418	139.9	126.9	-21.5	-2.4	-1.8	-1.3	-9.3
Raw hides and skins other than furskins and leather (Dec.2014=100).....	41	0.251	87.6	74.4	-	-3.7	-2.5	-2.7	-15.1
Wood, wood charcoal, cork, straw, baskets and wickerwork (Dec. 2014=100).....	IX	0.614	97.0	96.4	-	-1.0	-0.2	-0.6	-0.6
Woodpulp, recovered paper, and paper products.....	X	2.240	123.7	125.5	0.0	0.0	0.4	0.2	1.5
Woodpulp and recovered paper.....	47	0.634	126.4	129.1	-0.8	0.2	1.3	2.3	2.1
Paper and paperboard; articles of paper pulp, paper or paperboard.....	48	1.200	122.9	122.8	-1.5	0.2	0.0	-0.6	-0.1
Printed material (Dec. 2014=100).....	49	0.406	99.1	103.6	-	-1.2	0.0	0.0	4.5
Textile and textile articles.....	XI	1.781	122.3	122.2	-6.9	0.2	-0.6	0.2	-0.1

See footnotes at end of table.

Table 6. U.S. export price indexes and percent changes for selected categories of goods: July 2014 to July 2015 — Continued

[2000=100, unless otherwise noted]

Description	Harmonized system	Relative importance June 2015 ¹	Index		Percent change				
			June 2015	July 2015	Annual	Monthly			
					July 2014 to July 2015	Mar. 2015 to Apr. 2015	Apr. 2015 to May 2015	May 2015 to June 2015	June 2015 to July 2015
Cotton, including yarns and woven fabrics thereof.....	52	0.456	119.1	120.2	-14.3	0.9	-1.9	1.4	0.9
Stone, plaster, cement, asbestos, ceramics, glass etc.....	XIII	0.820	122.4	122.3	1.7	-0.2	-0.2	0.2	-0.1
Glass and glassware.....	70	0.422	99.0	99.1	0.4	-0.3	-0.3	0.0	0.1
Pearls, stones, precious metals, imitation jewelry, and coins.....	XIV	4.747	233.8	230.7	-8.6	-0.3	-0.6	-0.4	-1.3
Base metals and articles of base metals. ...	XV	5.195	152.9	149.9	-9.0	-0.7	0.3	0.3	-2.0
Iron and steel.....	72	1.230	165.5	157.8	-17.1	-1.7	-1.2	5.5	-4.7
Copper and articles thereof.....	74	0.518	191.3	181.8	-21.6	0.7	5.7	-4.0	-5.0
Aluminum and articles thereof.....	76	0.872	115.5	112.4	-9.4	-0.3	0.3	-2.4	-2.7
Miscellaneous articles of base metal.....	83	0.331	147.7	148.4	0.9	0.0	0.0	0.0	0.5
Machinery, electrical equipment, TV image and sound recorders, parts, etc.....	XVI	28.898	97.0	96.8	-0.5	-0.3	-0.2	-0.1	-0.2
Machinery and mechanical appliances; parts thereof.....	84	17.400	113.5	113.3	0.4	-0.2	-0.2	-0.1	-0.2
Electrical machinery and equipment and parts and accessories thereof.....	85	11.498	79.2	78.9	-2.1	-0.5	-0.3	0.0	-0.4
Vehicles, aircraft, vessels and associated transport equipment.....	XVII	14.536	130.9	130.9	0.7	0.1	0.2	0.1	0.0
Motor vehicles and their parts.....	87	9.033	115.0	115.0	-0.2	-0.1	0.2	0.0	0.0
Optical, photo, measuring, medical & musical instruments; & timepieces.....	XVIII	6.201	107.6	107.6	0.0	-0.4	-0.1	0.7	0.0
Miscellaneous manufactured articles.....	XX	1.484	111.3	111.4	0.8	0.5	0.1	-0.3	0.1
Furniture; stuffed furnishings; lamps and lighting fittings nesoi;.....	94	0.845	123.7	123.7	1.6	1.1	0.4	-0.5	0.0
Toys, games and sports equipment; parts and accessories thereof.....	95	0.478	89.5	89.6	0.1	-0.3	-0.2	0.0	0.1

¹ Relative importance figures are based on 2013 trade values.

NOTES: Data may be revised in each of the three months after original publication.

Dash = Not available

Table 7. U.S. import price indexes and percent changes by locality of origin: July 2014 to July 2015
 [2000=100, unless otherwise noted]

Description	Relative importance June 2015 ¹	Index		Percent change				
		June 2015	July 2015	Annual	Monthly			
				July 2014 to July 2015	Mar. 2015 to Apr. 2015	Apr. 2015 to May 2015	May 2015 to June 2015	June 2015 to July 2015
Industrialized Countries²	100.000	122.6	121.6	-9.0	0.0	1.1	0.5	-0.8
Nonmanufactured articles.....	9.248	162.1	152.1	-39.9	3.6	10.4	5.4	-6.2
Manufactured articles.....	90.299	119.1	118.9	-4.2	-0.4	0.3	-0.1	-0.2
Other Countries³	100.000	124.6	123.2	-11.0	-0.2	1.1	0.1	-1.1
Nonmanufactured articles.....	12.142	224.5	210.5	-40.0	2.9	9.8	0.4	-6.2
Manufactured articles.....	87.635	105.7	105.4	-3.8	-0.7	0.0	-0.1	-0.3
Canada	100.000	131.1	128.9	-17.2	0.6	2.5	1.5	-1.7
Nonmanufactured articles.....	25.191	155.8	146.1	-40.3	3.9	10.6	5.5	-6.2
Manufactured articles.....	74.104	128.7	128.5	-5.2	-0.2	0.2	0.3	-0.2
European Union⁴	100.000	134.9	134.8	-3.2	-0.5	0.7	0.2	-0.1
Manufactured articles.....	99.379	131.4	131.3	-3.1	-0.5	0.7	0.3	-0.1
France (Dec. 2003=100)	100.000	121.9	121.8	-1.1	-0.3	-0.4	0.3	-0.1
Germany (Dec. 2003=100)	100.000	117.0	116.9	-1.8	-0.3	-0.1	0.4	-0.1
United Kingdom (Dec. 2003=100)	100.000	121.7	121.5	-8.1	-0.4	0.2	0.1	-0.2
Latin America⁵	100.000	150.5	148.3	-14.0	0.3	1.5	-0.3	-1.5
Nonmanufactured articles.....	19.805	244.7	230.9	-37.4	3.3	8.4	-1.1	-5.6
Manufactured articles.....	79.796	124.7	124.3	-4.5	-0.4	-0.1	-0.1	-0.3
Mexico (Dec. 2003=100)	100.000	131.9	130.8	-7.6	0.1	0.5	0.1	-0.8
Nonmanufactured articles (Dec. 2008=100).....	11.115	136.4	129.8	-33.7	2.2	6.9	1.1	-4.8
Manufactured articles (Dec. 2008=100)...	88.579	90.8	90.5	-2.5	-0.2	-0.3	0.0	-0.3
Pacific Rim (Dec. 2003=100)⁶	100.000	100.3	100.1	-2.3	-0.3	-0.2	-0.3	-0.2
China (Dec. 2003=100)	100.000	102.9	102.7	-1.2	0.0	-0.3	-0.1	-0.2
Japan	100.000	95.9	95.6	-3.0	-0.5	-0.1	-0.5	-0.3
Asian NICs⁷	100.000	86.5	86.2	-3.0	-0.2	0.2	-0.5	-0.3
ASEAN (Dec. 2003=100)⁸	100.000	98.9	98.6	-4.9	-1.0	-0.1	0.0	-0.3
Asia Near East (Dec. 2003=100)⁹	100.000	184.1	173.8	-36.0	2.3	8.7	1.2	-5.6

¹ Relative importance figures are based on 2013 trade values.

² Western Europe, Canada, Japan, Australia, New Zealand and South Africa.

³ Eastern Europe, Latin America, OPEC countries, and other countries in Asia, Africa and the Western Hemisphere.

⁴ European Union countries.

⁵ Mexico, Central America, South America and the Caribbean.

⁶ China, Japan, Australia, Brunei, Indonesia, Macao, Malaysia, New Zealand, Papua New Guinea, Philippines and the Asian Newly Industrialized Countries.

⁷ Asian Newly Industrialized Countries - Hong Kong, Singapore, South Korea and Taiwan.

⁸ Association of Southeast Asian Nations - Brunei, Cambodia, Indonesia, Laos, Malaysia, Myanmar, Philippines, Singapore, Thailand and Vietnam.

⁹ Bahrain, Iran, Iraq, Israel, Jordan, Kuwait, Lebanon, Oman, Qatar, Saudi Arabia, Syria, United Arab Emirates and Yemen.

NOTES: Data may be revised in each of the three months after original publication.

Regions are not mutually exclusive.

Dash = Not available

Table 8. U.S. international price indexes and percent changes for selected transportation services: July 2014 to July 2015

[2000=100, unless otherwise noted]

Description	Relative importance June 2015 ¹	Index		Percent change				
		June 2015	July 2015	Annual	Monthly			
				July 2014 to July 2015	Mar. 2015 to Apr. 2015	Apr. 2015 to May 2015	May 2015 to June 2015	June 2015 to July 2015
Air Freight								
Import Air Freight	100.000	170.2	165.0	-5.9	-0.3	-0.4	-0.8	-3.1
Europe (Dec. 2003=100).....	22.645	149.9	148.7	-17.3	-4.1	1.0	3.0	-0.8
Asia.....	65.042	155.0	148.4	-1.8	0.9	-0.9	-2.1	-4.3
Export Air Freight	100.000	157.9	158.5	-0.9	0.9	-0.4	0.3	0.4
Europe (Dec. 2006=100).....	36.713	150.9	151.6	6.0	1.5	-0.5	0.3	0.5
Inbound Air Freight	100.000	158.3	157.2	-4.9	0.0	-0.5	-0.3	-0.7
Europe (Dec. 2003=100).....	25.195	140.5	140.6	-12.1	-2.3	0.1	2.3	0.1
Asia.....	60.677	145.5	143.8	-2.4	1.0	-0.8	-1.4	-1.2
Outbound Air Freight	100.000	148.2	150.3	-1.8	-2.2	2.0	-0.3	1.4
Europe (Dec. 2003=100).....	31.227	158.1	158.3	-7.9	-6.7	-0.1	0.0	0.1
Asia.....	44.329	140.8	145.3	0.2	0.4	-0.2	0.1	3.2
Air Passenger Fares								
Import Air Passenger Fares	100.000	206.2	197.8	-2.4	-2.9	1.9	8.9	-4.1
Europe.....	47.824	241.8	225.2	0.7	-5.5	3.4	6.4	-6.9
Asia.....	25.318	158.7	153.6	-6.5	-3.0	6.1	9.1	-3.2
Latin America/Caribbean.....	9.056	159.7	164.6	-4.4	-0.8	-3.9	0.3	3.1
Export Air Passenger Fares	100.000	166.8	172.0	-15.5	-3.6	2.8	2.3	3.1
Europe.....	32.279	227.5	236.5	-9.7	-4.0	4.3	8.4	4.0
Asia.....	27.399	142.5	143.0	-16.6	-5.5	9.1	0.4	0.4
Latin America/Caribbean.....	22.121	166.2	168.4	-10.1	-7.3	-3.1	0.5	1.3

¹ Relative importance figures are based on 2013 trade values.

NOTES: Data may be revised in each of the three months after original publication.

Dash = Not available

TECHNICAL NOTE

Import and Export Merchandise and Services Price Indexes -- All indexes use a modified Laspeyres formula and are not seasonally adjusted. Price indexes are reweighted annually, with a two-year lag in the weights. Published series use a base year of 2000=100 where possible. More detailed index series and additional information may be obtained at <http://www.bls.gov/mxp>, or by calling (202) 691-7101.

Merchandise Goods Classification Systems -- The merchandise price indexes are published using three classification systems. Items are classified by end use according to the Bureau of Economic Analysis Classification System, by industry according to the North American Industry Classification System (NAICS), and by product category according to the Harmonized System (HS). While classification by end use and product category are self-explanatory, some notes are in order for classifying items by industry. In the NAICS imports and exports tables, items are classified by output industry, not input industry. As an example, NAICS import index 326 (plastics and rubber products manufacturing) include outputs such as manufactured plastic rather than inputs such as petroleum. The NAICS classification structure also matches the classification system used by the PPI (Producer Price Index) to produce the NAICS primary products indexes.

Import Price Indexes -- Products have been classified by the Harmonized Tariff Schedule of the United States Annotated (TSUSA). Import prices are based on U.S. dollar prices paid by the U.S. importer. The prices are generally either "free on board" (f.o.b.) foreign port or "cost, insurance, and freight" (c.i.f.) U.S. port transaction prices, depending on the practices of the individual industry. The index for crude petroleum is calculated from data collected by the U.S. Department of Energy.

Export Price Indexes -- Products have been classified by the Harmonized Schedule B classification system of the U.S. Bureau of the Census. The prices used are generally either "free alongside ship" (f.a.s.) factory or "free on board" (f.o.b.) transaction prices, depending on the practices of the individual industry. Prices used in the grain index, excluding rice, are obtained from the U.S. Department of Agriculture.

Services Price Indexes -- Starting in September 2008 the Import Air Passenger Fares Indexes represent changes in the average revenue per passenger received by foreign carriers from U.S. residents and are calculated from data obtained from an airline consulting service. These data include tickets sold by travel agencies and travel websites. Tickets sold directly by the airlines are excluded, as are frequent flyer tickets generally. Starting in January 2008 the Export Air Passenger Fares Indexes represent changes in the average revenue per passenger received by U.S. carriers from foreign residents and are calculated from data collected directly from airlines. These data include frequent flyer tickets and those sold by consolidators. Taxes and fees are included in the Import Air Passenger Fares Index and excluded from the Export Air Passenger Fares Index. The Air Freight Indexes are calculated from data collected directly from airlines. These data exclude mail and passenger baggage. The scope of the service being priced is the movement of freight from airport to airport only, and does not include any ground transportation or port service. The Air Freight Indexes are presented using two definitions: Balance of Payments (which represent transactions between U.S. and foreign residents) and International (which represent transactions inbound to and outbound from the U.S.). Fact sheets specifying detailed information for each services industry are available at <http://www.bls.gov/mxp> under "MXP Publications."

Import Indexes by Locality of Origin -- Prices used in these indexes are a subset of the data collected for the Import Price Indexes. Beginning with January 2002, the indexes are defined by locality of origin using a nomenclature based upon the North American Industry Classification System (NAICS). Nonmanufactured goods are defined as NAICS 11 and 21 and manufactured goods are defined as NAICS 31-33.

Revision Policy -- To reflect the availability of late reports and corrections by respondents, monthly data may be revised in each of the three months after original publication. After three months, no further data revisions take place. So, for example, data released in the January release will be subject to revision in the releases for February, March, and April.

Uses of the Data -- The primary use of the indexes is to deflate trade statistics, notably the foreign trade sector of the National Income and Product Accounts constructed by the Department of Commerce. Other published indexes are useful for general market analysis. For trade in international services, Balance of Payments indexes are used for deflating National Income and Product Accounts, while International indexes are more appropriate for market analysis. Merchandise and services indexes also can be used to study U.S. competitiveness and to compute price elasticities, and the merchandise import indexes by country or region of origin are useful in terms of trade analysis.

E-Mail Subscription -- The U.S. Import and Export Price Indexes news release is available through an e-mail subscription service at (<http://www.bls.gov/bls/list.htm>).

Additional Information -- More detailed data are available on the Import/Export Price Indexes home page at (<http://www.bls.gov/mxp>). For technical assistance in using the BLS Internet site, send e-mail to (labstat.helpdesk@bls.gov). For Import/Export Price Index data requests, send e-mail to (mxpinfo@bls.gov).

Information from this release will be made available to sensory impaired individuals upon request. Voice phone: 202-691-5200; Federal Relay Service: 1-800-877-8339.