

Transmission of material in this release is embargoed until
8:30 a.m. (EST) Friday, March 11, 2016

USDL-16-0464

Technical information: (202) 691-7101 • MXPinfo@bls.gov • www.bls.gov/mxp
Media contact: (202) 691-5902 • PressOffice@bls.gov

U.S. IMPORT AND EXPORT PRICE INDEXES – FEBRUARY 2016

U.S. import prices fell 0.3 percent in February following a 1.0-percent drop in January, the U.S. Bureau of Labor Statistics reported today. The February decrease was mostly led by declining fuel prices. The price index for U.S. exports decreased 0.4 percent in February, after falling 0.8 percent the previous month.

Chart 1. One-month percent change in the Import Price Index: February 2015 – February 2016

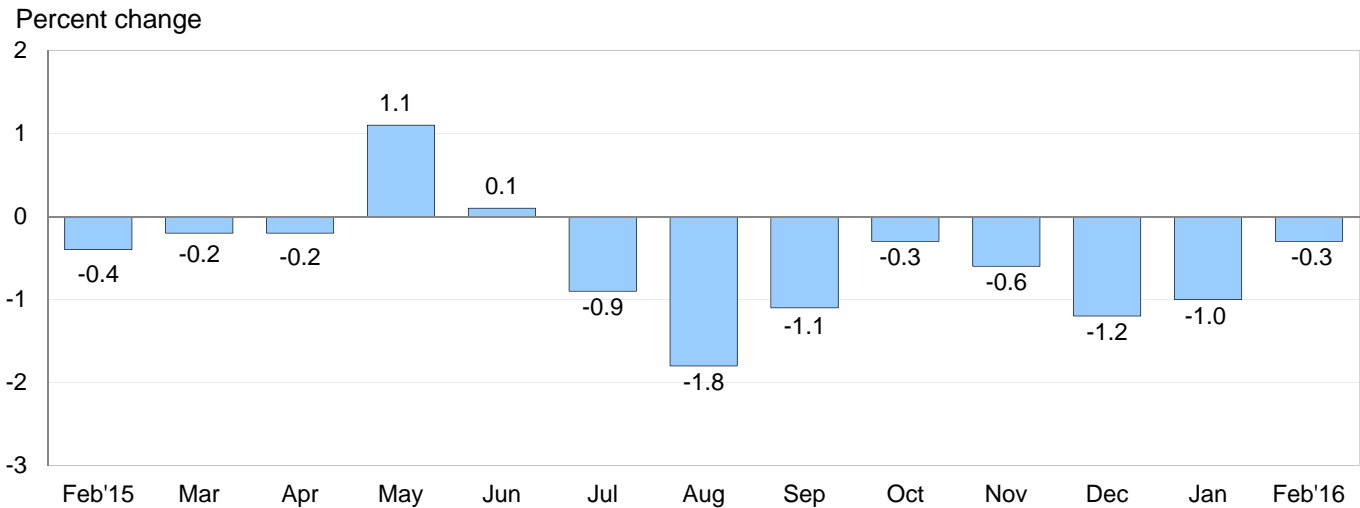
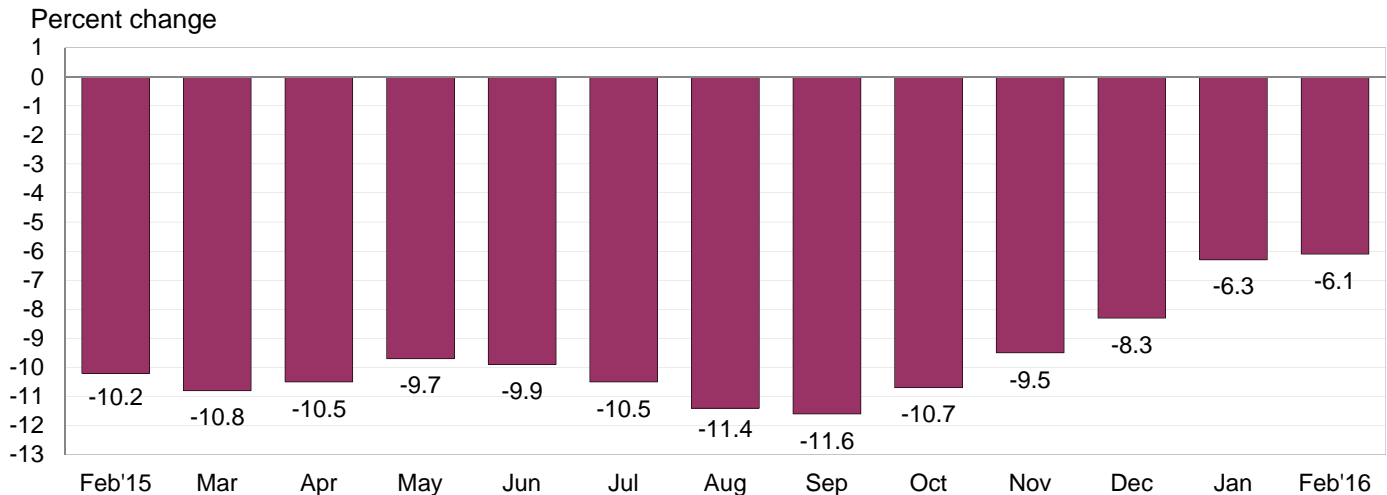


Chart 2. 12-month percent change in the Import Price Index: February 2015 – February 2016



All Imports: U.S. import prices fell 0.3 percent in February and have not recorded a monthly advance since the index ticked up 0.1 percent in June 2015. The February decrease followed declines of 1.0 percent in January and 1.2 percent in December. The price index for overall imports decreased 6.1 percent between February 2015 and February 2016. Despite the downward trend over the past 8 months, the 12-month drop recorded in February was the smallest over-the-year decline since the index fell 5.6 percent for the year ended in December 2014.

Fuel Imports: Prices for import fuel declined 3.9 percent in February, after decreasing 21.9 percent over the previous 2 months. Fuel prices also have not recorded a monthly advance since June 2015 when the index rose 1.5 percent. Both petroleum and natural gas prices contributed to the February drop, falling 4.0 percent and 6.3 percent, respectively. Prices for fuel declined 37.3 percent over the past year. A 38.5-percent decrease in petroleum prices over the period was the largest factor for the overall drop, although natural gas prices also fell for the year ended in February, declining 36.4 percent.

All Imports Excluding Fuel: The price index for nonfuel imports edged down 0.1 percent in February, after recording no change the previous month. In February, lower prices for foods, feeds, and beverages; automotive vehicles; and nonfuel industrial supplies and materials more than offset rising consumer goods prices. Nonfuel import prices have not recorded a monthly increase since a 0.1-percent advance in July 2014 and declined 2.7 percent over the past 12 months.

Table A. Percent change in Import and Export Price Indexes, selected categories

Month	IMPORTS			EXPORTS		
	All imports	Fuel imports	Nonfuel imports	All exports	Agricultural exports	Non-agricultural exports
2015						
February.....	-0.4	-1.9	-0.2	-0.2	-2.2	0.2
March.....	-0.2	1.5	-0.4	0.0	-1.6	0.2
April.....	-0.2	1.8	-0.3	-0.6	-0.9	-0.7
May.....	1.1	10.8	0.0	0.5	-1.3	0.6
June.....	0.1	1.5	-0.2	-0.3	-1.6	-0.1
July.....	-0.9	-6.1	-0.3	-0.4	1.0	-0.6
August.....	-1.8	-12.7	-0.3	-1.4	-2.5	-1.3
September.....	-1.1	-8.4	-0.3	-0.6	-1.4	-0.5
October.....	-0.3	-0.4	-0.3	-0.2	0.1	-0.3
November.....	-0.6	-4.0 ^r	-0.3	-0.7	-0.9	-0.7
December.....	-1.2 ^r	-10.0 ^r	-0.3	-1.1	-0.9 ^r	-1.1
2016						
January.....	-1.0 ^r	-13.3 ^r	0.0 ^r	-0.8	-1.3 ^r	-0.9 ^r
February.....	-0.3	-3.9	-0.1	-0.4	0.6	-0.4
Feb. 2014 to 2015.....	-10.2	-47.9	-1.1	-5.8	-9.7	-5.3
Feb. 2015 to 2016.....	-6.1	-37.3	-2.7	-6.0	-10.4	-5.6

r Revised

Chart 3. One-month percent change in the Export Price Index: February 2015 – February 2016

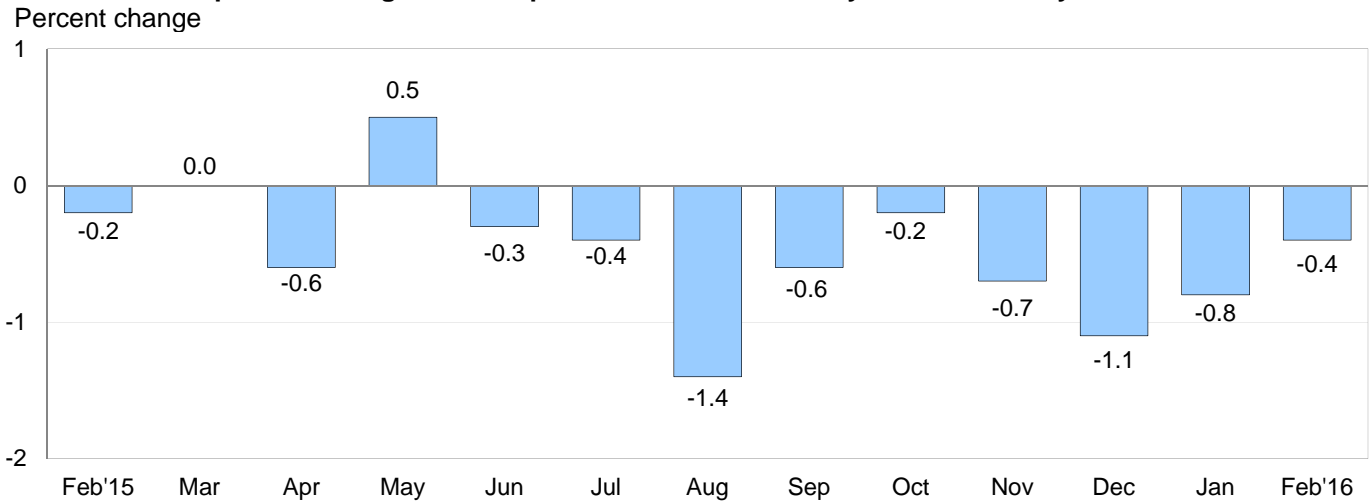
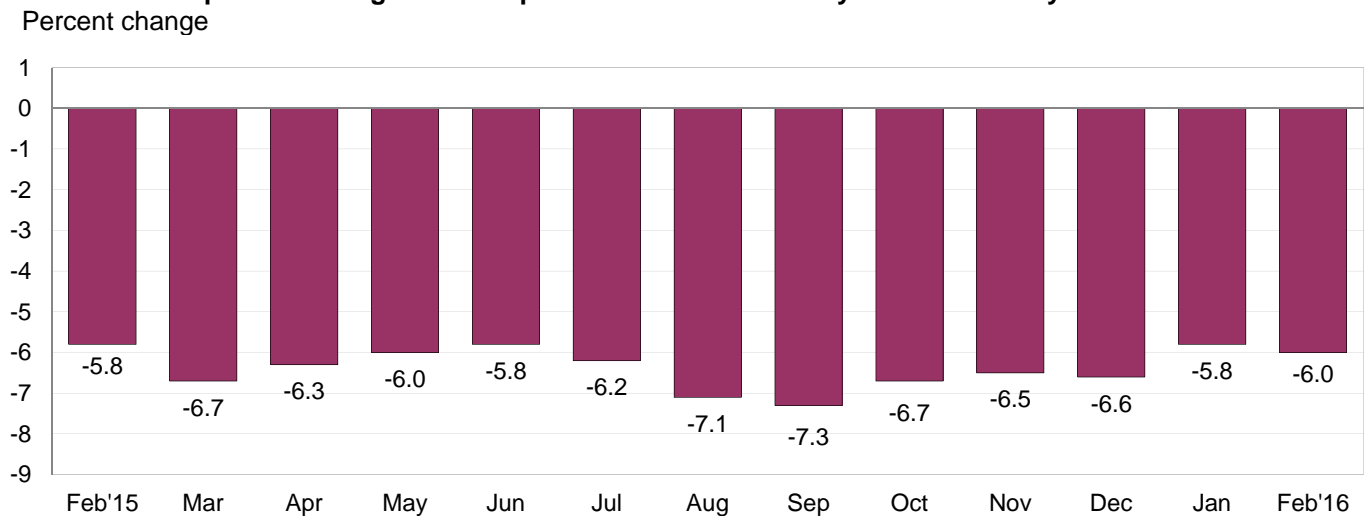


Chart 4. 12-month percent change in the Export Price Index: February 2015 – February 2016



All Exports: Overall export prices decreased 0.4 percent in February as declining nonagricultural prices more than offset rising agricultural prices. The February decline followed decreases of 0.8 percent in January and 1.1 percent in December. The price index for overall exports has not recorded a 1-month increase since the index advanced 0.5 percent in May 2015. Export prices fell 6.0 percent over the past year.

All Exports Excluding Agriculture: The price index for nonagricultural exports declined 0.4 percent in February, after decreasing 2.0 percent over the 2 previous months. In February, falling nonagricultural industrial supplies and materials prices drove the overall decline in nonagricultural prices, although lower prices for automotive vehicles and consumer goods also declined. In contrast, capital goods prices increased. Prices for nonagricultural exports decreased 5.6 percent for the year ended in February.

Agricultural Exports: Prices for agricultural exports rose 0.6 percent in February, the first monthly advance since the index ticked up 0.1 percent in October 2015. The February increase was driven by a 6.8-percent rise in fruit prices, a 3.1-percent advance in meat prices, and a 4.4-percent increase in corn prices. Despite the February advance, agricultural prices fell 10.4 percent over the past 12 months led by lower prices for meat, nuts, and soybeans over that period.

SELECTED FEBRUARY HIGHLIGHTS

Import Prices

Imports by Locality of Origin: In February, prices for imports from China edged down 0.1 percent for the third consecutive month and have not recorded a monthly advance since the index increased 0.1 percent in December 2014. Import prices from China declined 1.6 percent over the past year. Led by lower fuel prices, prices for imports from Canada, the European Union, and Mexico also fell in February, declining 0.8 percent, 0.5 percent, and 0.9 percent, respectively. The 0.5-percent decrease for import prices from the European Union was the largest monthly drop since the index fell 1.1 percent in September 2015, and the 0.9-percent decline for import prices from Mexico was the largest 1-month decrease since the index dropped 1.3 percent in August 2015. In contrast, the price index for imports from Japan rose 0.1 percent in February.

Nonfuel Industrial Supplies and Materials: Nonfuel industrial supplies and materials prices edged down 0.1 percent, led by lower prices for chemicals and building materials. The price index for nonfuel industrial supplies and materials has not recorded a 1-month increase since the index rose 0.5 percent in July 2014.

Finished Goods: Consumer goods prices rose 0.3 percent in February, after advancing 0.4 percent in January. Both monthly increases were driven by higher prices for medicinal, dental, and pharmaceutical prices which rose 2.0 percent in February and 2.2 percent in January. In contrast, automotive vehicle prices fell 0.1 percent. In February, the price index for capital goods was unchanged from the previous month.

Foods, Feeds, and Beverages: Foods, feeds, and beverages prices decreased 2.0 percent in February as a 20.0-percent drop in vegetable prices more than offset an 8.3-percent rise in meat prices.

Transportation Services: Import air passenger fares declined 1.5 percent in February, following a 1.0-percent drop in January and a 0.6-percent decrease in December. In February, a 6.7-percent decline in Asian fares led the overall drop. Import air passenger fares decreased 3.3 percent for the year ended in February. The price index for import air freight fell 1.8 percent in February, after recording declines of 4.6 percent in January and 2.8 percent in December. Import air freight prices decreased 9.5 percent over the past year.

Export Prices

Nonagricultural Industrial Supplies and Materials: The price index for nonagricultural industrial supplies and materials decreased 2.1 percent in February and 15.2 percent over the past 12 months. Both declines were driven by lower fuel prices which declined 6.1 percent in February and 33.0 percent between February 2015 and February 2016.

Finished Goods: The major export finished goods categories were mixed in February. Capital goods prices rose 0.3 percent, led by a 4.2-percent increase in prices for civilian aircraft engines. The last monthly increase for capital goods prices larger than 0.3 percent was a 0.7-percent advance in January 2013. In contrast, prices for automotive vehicles fell 0.2 percent, and consumer goods prices edged down 0.1 percent.

Transportation Services: Export air passenger fares decreased 14.3 percent in February, driven by a 16.4-percent drop in Asian fares and a 15.9-percent decline in Latin American/Caribbean fares. The February decrease was the largest monthly drop since the index was first published monthly in December 2000. Export air passenger fares fell 11.8 percent over the past year. Prices for export air freight recorded no change in February and decreased 0.4 percent over the past year.

Import and Export Price Index data for March 2016 are scheduled for release on Tuesday, April 12, 2016 at 8:30 a.m. (EDT).

Table 1. U.S. import price indexes and percent changes for selected categories of goods: February 2015 to February 2016

[2000=100, unless otherwise noted]

Description	End Use	Relative importance Jan. 2016 ¹	Index		Percent change				
			Jan. 2016	Feb. 2016	Annual	Monthly			
					Feb. 2015 to Feb. 2016	Oct. 2015 to Nov. 2015	Nov. 2015 to Dec. 2015	Dec. 2015 to Jan. 2016	Jan. 2016 to Feb. 2016
All commodities		100.000	118.1	117.8	-6.1	-0.6	-1.2	-1.0	-0.3
All imports excluding food and fuels (Dec. 2010=100)		87.209	98.2	98.3	-2.5	-0.2	-0.3	-0.1	0.1
All imports excluding petroleum		94.086	110.8	110.7	-2.9	-0.3	-0.4	0.0	-0.1
All imports excluding fuels (Dec. 2001=100)		93.459	114.9	114.8	-2.7	-0.3	-0.3	0.0	-0.1
Foods, feeds, & beverages	0	6.250	173.4	170.0	-5.1	-0.2	-0.2	0.7	-2.0
Agricultural foods, feeds & beverages, excluding distilled beverages.....	00	4.859	190.8	186.1	-5.7	0.1	-0.4	0.5	-2.5
Nonagricultural foods (fish, distilled beverages).....	01	1.391	134.0	133.8	-3.0	-0.8	0.5	1.3	-0.1
Industrial supplies & materials	1	19.936	140.4	138.5	-21.4	-2.1	-4.8	-5.3	-1.4
Industrial supplies & materials excluding petroleum.....		14.021	137.3	136.9	-10.7	-1.1	-1.4	-0.9	-0.3
Industrial supplies & materials excluding fuels (Dec. 2001=100).....		13.394	156.0	155.8	-9.9	-0.9	-1.3	-0.8	-0.1
Industrial supplies & materials, durable....		7.949	141.9	142.1	-11.8	-1.0	-1.7	-1.1	0.1
Industrial supplies & materials nondurable excluding petroleum.....		5.445	131.3	130.2	-9.3	-1.0	-1.1	-0.5	-0.8
Fuels & lubricants.....	10	6.542	117.7	113.1	-37.3	-4.0	-10.0	-13.3	-3.9
Petroleum & petroleum products.....	100	5.916	123.8	118.9	-38.5	-4.0	-10.5	-14.3	-4.0
Crude.....	10000	4.155	121.8	118.7	-38.1	-6.2	-12.4	-12.9	-2.5
Fuels, n.e.s.-coals & gas.....	101	0.434	84.3	80.0	-30.6	-3.3	-5.3	-5.7	-5.1
Gas-natural.....	10110	0.342	68.5	64.2	-36.4	-4.7	-7.5	-4.3	-6.3
Paper & paper base stocks.....	11	0.591	107.8	107.8	-3.7	0.2	-0.9	-0.6	0.0
Materials associated with nondurable supplies & materials.....	12	4.921	151.5	150.7	-7.4	-0.8	-0.6	-0.3	-0.5
Selected building materials.....	13	1.299	134.1	133.0	-4.9	1.4	-0.3	-0.1	-0.8
Unfinished metals related to durable goods.....	14	3.142	174.2	174.3	-21.3	-2.6	-3.4	-1.8	0.1
Finished metals related to durable goods.....	15	1.714	144.6	144.5	-6.5	-0.7	-1.0	-0.6	-0.1
Nonmetals related to durable goods.....	16	1.727	106.9	108.2	-2.7	-0.3	-0.4	-1.3	1.2
Capital goods	2	29.278	89.6	89.6	-2.1	-0.2	-0.2	-0.2	0.0
Electric generating equipment.....	20	3.559	116.8	116.6	-2.4	-0.2	-0.3	0.2	-0.2
Nonelectrical machinery.....	21	22.945	82.0	82.1	-2.3	-0.2	-0.2	-0.4	0.1
Transportation equipment excluding motor vehicles (Dec. 2001=100).....	22	2.774	137.3	137.5	0.4	0.1	0.0	0.2	0.1
Automotive vehicles, parts & engines	3	16.470	110.6	110.5	-0.8	-0.1	-0.1	0.1	-0.1
Consumer goods, excluding automotives	4	28.067	107.5	107.8	0.0	0.0	-0.1	0.4	0.3
Nondurables, manufactured.....	40	13.383	120.2	121.1	1.9	0.0	0.0	0.8	0.7
Durables, manufactured.....	41	13.148	94.9	94.8	-1.5	-0.1	-0.3	-0.1	-0.1
Nonmanufactured consumer goods.....	42	1.536	119.8	120.1	-1.8	0.3	1.5	-0.4	0.3

¹ Relative importance figures are based on 2014 trade values.

NOTES: Data may be revised in each of the 3 months after original publication.

Dash = Not available

Table 2. U.S. export price indexes and percent changes for selected categories of goods: February 2015 to February 2016

[2000=100, unless otherwise noted]

Description	End Use	Relative importance Jan. 2016 ¹	Index		Percent change				
			Jan. 2016	Feb. 2016	Annual	Monthly			
					Feb. 2015 to Feb. 2016	Oct. 2015 to Nov. 2015	Nov. 2015 to Dec. 2015	Dec. 2015 to Jan. 2016	Jan. 2016 to Feb. 2016
All commodities.....		100.000	118.8	118.3	-6.0	-0.7	-1.1	-0.8	-0.4
Agricultural commodities.....		9.073	173.4	174.4	-10.4	-0.9	-0.9	-1.3	0.6
All exports excluding food and fuels (Dec. 2010=100).....		85.495	97.9	97.8	-3.2	-0.4	-0.5	-0.3	-0.1
Nonagricultural commodities.....		90.927	114.6	114.1	-5.6	-0.7	-1.1	-0.9	-0.4
Foods, feeds, & beverages.....	0	8.479	174.7	176.2	-10.1	-0.7	-1.2	-1.4	0.9
Agricultural foods, feeds & beverages, excluding distilled beverages.....	00	7.811	174.9	176.1	-10.6	-0.9	-1.1	-1.5	0.7
Nonagricultural foods (fish, distilled beverages).....	01	0.668	180.0	186.0	-3.9	1.4	-1.3	-1.1	3.3
Industrial supplies & materials.....	1	28.005	134.6	131.9	-15.0	-2.0	-2.9	-2.1	-2.0
Industrial supplies & materials, durable....		10.388	147.4	147.3	-9.8	-1.4	-1.8	-0.2	-0.1
Industrial supplies & materials, nondurable.....		17.617	128.6	124.6	-17.8	-2.3	-3.6	-3.2	-3.1
Agricultural industrial supplies & materials.....	10	1.262	169.5	169.4	-9.2	-1.5	0.4	-0.2	-0.1
Nonagricultural industrial supplies & materials.....		26.743	133.4	130.6	-15.2	-2.0	-3.1	-2.2	-2.1
Fuels & lubricants.....	11	6.026	126.3	118.6	-33.0	-3.6	-8.9	-7.7	-6.1
Nonagricultural supplies & materials excluding fuels & building materials....	12	19.671	146.2	144.9	-9.0	-1.6	-1.3	-0.5	-0.9
Selected building materials.....	13	1.046	114.8	113.9	-4.9	0.5	0.6	0.3	-0.8
Capital goods.....	2	39.504	106.8	107.1	-0.6	-0.1	-0.2	-0.1	0.3
Electrical generating equipment.....	20	4.019	112.1	111.9	-2.5	-0.2	-0.4	-0.2	-0.2
Nonelectrical machinery.....	21	26.747	94.3	94.3	-1.4	0.0	-0.2	-0.2	0.0
Transportation equipment excluding motor vehicles (Dec. 2001=100).....	22	8.739	162.2	164.5	2.6	-0.1	-0.1	0.2	1.4
Automotive vehicles, parts & engines.....	3	10.916	113.5	113.3	-0.4	-0.1	-0.1	0.0	-0.2
Consumer goods, excluding automotives.....	4	13.096	110.5	110.4	-2.3	0.0	-0.4	-0.8	-0.1
Nondurables, manufactured.....	40	5.909	105.6	105.2	-3.6	0.0	-0.6	-1.4	-0.4
Durables, manufactured.....	41	5.524	108.8	109.1	-1.4	0.0	-0.5	-0.5	0.3

¹ Relative importance figures are based on 2014 trade values.

NOTES: Data may be revised in each of the 3 months after original publication.

Dash = Not available

Table 3. U.S. import price indexes and percent changes for selected categories of goods: February 2015 to February 2016

[December 2005=100, unless otherwise noted]

Description	NAICS	Relative importance Jan. 2016 ¹	Index		Percent change				
			Jan. 2016	Feb. 2016	Annual	Monthly			
					Feb. 2015 to Feb. 2016	Oct. 2015 to Nov. 2015	Nov. 2015 to Dec. 2015	Dec. 2015 to Jan. 2016	Jan. 2016 to Feb. 2016
Nonmanufactured articles.....		6.896	69.8	67.1	-30.5	-4.3	-8.4	-8.3	-3.9
Agriculture, forestry, fishing and hunting.....	11	2.111	179.0	167.8	-5.6	0.9	1.5	1.3	-6.3
Crop production.....	111	1.729	194.6	179.1	-4.6	0.6	2.8	1.5	-8.0
Animal production (Dec. 2014=100).....	112	0.210	78.9	82.0	-12.3	4.6	-6.4	3.7	3.9
Mining.....	21	4.785	56.0	54.5	-37.2	-5.9	-11.5	-11.9	-2.7
Mining (except oil and gas) (Dec. 2006=100).....	212	0.239	93.0	93.1	-19.3	0.5	-0.2	-4.5	0.1
Manufactured articles.....		92.825	108.4	108.3	-3.7	-0.2	-0.5	-0.5	-0.1
Manufactured goods, part 1.....	31	12.340	122.7	122.8	-2.4	-0.2	-0.3	-0.1	0.1
Food manufacturing.....	311	3.432	147.0	147.9	-6.7	-0.4	-1.0	-0.1	0.6
Beverage and tobacco product manufacturing.....	312	1.113	118.0	118.2	0.7	-0.2	-0.3	0.2	0.2
Textile mills (Dec. 2011=100).....	313	0.418	99.7	99.6	-2.6	-0.5	-0.2	0.2	-0.1
Textile product mills.....	314	0.926	110.1	109.6	-3.2	-0.4	-0.1	-0.6	-0.5
Apparel manufacturing.....	315	4.477	111.6	111.6	-0.4	-0.1	0.0	0.1	0.0
Leather and allied product manufacturing.....	316	1.974	123.9	123.7	-0.5	0.0	-0.1	-0.4	-0.2
Manufactured goods, part 2.....	32	16.827	113.6	113.4	-7.6	0.2	-0.9	-2.1	-0.2
Wood product manufacturing.....	321	0.773	110.8	110.0	-7.3	1.8	-0.6	0.1	-0.7
Paper manufacturing.....	322	1.098	105.4	105.4	-4.7	0.0	-0.8	-0.4	0.0
Petroleum and coal products manufacturing.....	324	1.642	60.4	55.9	-40.4	1.7	-5.9	-18.7	-7.5
Chemical manufacturing.....	325	9.748	132.0	133.4	-1.0	-0.2	-0.2	0.8	1.1
Plastics and rubber products manufacturing.....	326	2.303	116.2	116.4	-3.4	-0.1	-0.3	-1.8	0.2
Nonmetallic mineral product manufacturing.....	327	1.058	129.9	129.8	-0.3	0.2	-0.1	-0.3	-0.1
Manufactured goods, part 3.....	33	63.659	103.3	103.3	-2.8	-0.3	-0.4	-0.2	0.0
Primary metal manufacturing.....	331	3.902	117.9	117.6	-20.5	-2.4	-3.4	-2.1	-0.3
Fabricated metal product manufacturing.....	332	3.204	123.4	123.0	-2.8	-0.4	-0.3	-0.4	-0.3
Machinery manufacturing.....	333	7.929	117.3	117.3	-1.8	-0.2	-0.4	-0.3	0.0
Computer and electronic product manufacturing.....	334	18.571	77.1	77.0	-2.0	-0.1	-0.1	-0.3	-0.1
Electrical equipment, appliance, and component manufacturing.....	335	5.017	116.5	116.2	-2.1	-0.2	-0.5	0.3	-0.3
Transportation equipment manufacturing.....	336	17.710	109.8	109.8	-0.5	0.0	-0.1	0.1	0.0
Furniture and related product manufacturing.....	337	1.703	115.3	115.1	-0.9	0.1	-0.3	0.2	-0.2
Miscellaneous manufacturing.....	339	5.623	119.1	120.0	-0.8	0.0	-0.2	0.2	0.8

¹ Relative importance figures are based on 2014 trade values.

NOTES: Data may be revised in each of the 3 months after original publication.

Dash = Not available

Table 4. U.S. export price indexes and percent changes for selected categories of goods: February 2015 to February 2016

[December 2005=100, unless otherwise noted]

Description	NAICS	Relative importance Jan. 2016 ¹	Index		Percent change				
			Jan. 2016	Feb. 2016	Annual	Monthly			
					Feb. 2015 to Feb. 2016	Oct. 2015 to Nov. 2015	Nov. 2015 to Dec. 2015	Dec. 2015 to Jan. 2016	Jan. 2016 to Feb. 2016
Nonmanufactured articles.....		6.946	120.8	118.7	-12.3	-3.4	-0.4	0.8	-1.7
Agriculture, forestry, fishing and hunting.....	11	4.659	152.6	154.2	-7.7	-1.6	-1.1	-1.0	1.0
Crop production.....	111	4.382	158.0	159.3	-8.0	-1.6	-1.2	-1.1	0.8
Mining.....	21	2.287	64.3	59.5	-21.1	-7.0	0.8	4.9	-7.5
Mining (except oil and gas).....	212	1.113	75.6	73.0	-19.7	-1.5	-1.9	-2.1	-3.4
Manufactured articles.....		91.845	109.8	109.5	-5.2	-0.5	-1.0	-0.9	-0.3
Manufactured goods, part 1.....	31	6.720	132.2	132.3	-10.2	-0.4	-0.6	-1.0	0.1
Food manufacturing.....	311	4.486	147.7	147.4	-12.5	-0.4	-1.0	-1.1	-0.2
Beverage and tobacco product manufacturing.....	312	0.610	104.9	105.8	-8.8	-0.2	0.8	-2.2	0.9
Manufactured goods, part 2.....	32	22.666	101.9	100.1	-12.7	-1.3	-2.8	-2.7	-1.8
Paper manufacturing.....	322	1.767	121.7	122.3	-1.5	-0.9	-0.3	-0.4	0.5
Printing and related support activities (Dec. 2015=100).....	323	0.272	100.0	100.0	-	-	-	0.0	0.0
Petroleum and coal products manufacturing.....	324	3.694	69.5	65.3	-37.7	-3.3	-11.8	-10.3	-6.0
Chemical manufacturing.....	325	13.080	113.5	111.9	-7.5	-1.2	-0.8	-1.3	-1.4
Plastics and rubber products manufacturing.....	326	2.450	116.8	116.7	-2.1	0.0	-0.2	0.3	-0.1
Nonmetallic mineral product manufacturing.....	327	0.872	111.9	112.0	-0.6	0.1	0.1	-0.7	0.1
Manufactured goods, part 3.....	33	62.459	110.8	111.0	-1.6	-0.3	-0.4	-0.2	0.2
Primary metal manufacturing.....	331	4.073	126.8	126.0	-13.0	-2.0	-3.0	-0.4	-0.6
Fabricated metal product manufacturing...	332	3.340	130.1	130.2	0.5	0.2	-0.1	0.2	0.1
Machinery manufacturing.....	333	11.718	125.4	125.5	0.5	-0.1	-0.1	0.2	0.1
Computer and electronic product manufacturing.....	334	14.762	84.3	84.2	-3.1	-0.2	-0.4	-0.5	-0.1
Electrical equipment, appliance, and component manufacturing.....	335	3.874	111.9	111.9	-2.4	-0.4	-0.5	-0.4	0.0
Transportation equipment manufacturing..	336	18.523	121.7	122.3	1.0	-0.1	-0.1	0.1	0.5
Furniture and related product manufacturing (Dec. 2011=100).....	337	0.397	110.5	112.9	2.5	0.0	0.1	0.3	2.2
Miscellaneous manufacturing.....	339	5.772	121.8	121.9	-1.3	0.1	-0.2	-0.2	0.1

¹ Relative importance figures are based on 2014 trade values.

NOTES: Data may be revised in each of the 3 months after original publication.

Dash = Not available

Table 5. U.S. import price indexes and percent changes for selected categories of goods: February 2015 to February 2016

[2000=100, unless otherwise noted]

Description	Harmoni- zied system	Relative importance Jan. 2016 ¹	Index		Percent change				
			Jan. 2016	Feb. 2016	Annual	Monthly			
					Feb. 2015 to Feb. 2016	Oct. 2015 to Nov. 2015	Nov. 2015 to Dec. 2015	Dec. 2015 to Jan. 2016	Jan. 2016 to Feb. 2016
Live animals; animal products.....	I	1.435	180.1	183.9	-5.9	0.5	-1.5	1.5	2.1
Meat and edible meat offal.....	02	0.378	218.1	232.3	-8.8	1.8	-2.0	-1.8	6.5
Fish and crustaceans, molluscs and other aquatic invertebrates.....	03	0.783	132.7	132.0	-3.9	-1.5	0.6	2.8	-0.5
Vegetable products.....	II	2.183	212.1	195.9	-3.5	0.1	3.1	1.5	-7.6
Edible vegetables, roots, and tubers.....	07	0.663	589.0	447.7	14.2	0.0	4.3	13.3	-24.0
Edible fruit and nuts; peel of citrus fruit or melons.....	08	0.579	93.2	91.7	-9.7	0.3	2.7	-4.5	-1.6
Coffee, tea, mate and spices.....	09	0.364	225.3	225.9	-12.0	-0.9	2.0	-2.6	0.3
Oilseeds & misc grains, seeds, plants, straw & fodder (Dec. 2015=100).....	12	0.171	103.0	102.2	-	-	-	3.0	-0.8
Animal or vegetable fats and oils (Dec. 2009=100).....	III	0.262	97.8	97.9	-9.6	-0.4	-5.3	0.7	0.1
Prepared foodstuffs, beverages, and tobacco.....	IV	2.797	158.1	157.8	-3.1	0.0	-0.4	-0.6	-0.2
Sugars and sugar confectionary (Dec. 2012=100).....	17	0.192	84.8	84.9	-7.6	0.1	-0.6	-0.1	0.1
Cocoa and cocoa preparations (Dec. 2009=100).....	18	0.239	108.6	105.7	-5.8	1.7	-0.3	-6.1	-2.7
Preparations of cereals, flour, starch or milk; bakers' wares (Dec. 2007=100).....	19	0.290	132.0	131.8	-0.8	-0.1	-0.1	0.0	-0.2
Preparations of vegetables, fruit, nuts, or other parts of plants.....	20	0.327	153.4	152.1	-7.7	1.1	-0.1	-0.5	-0.8
Beverages, spirits, and vinegar.....	22	1.051	128.0	128.3	0.6	-0.2	0.0	0.0	0.2
Mineral products.....	V	6.587	117.6	113.1	-37.7	-4.1	-10.1	-13.5	-3.8
Mineral fuels, oils and residuals, bituminous substances and mineral waxes.....	27	6.323	114.4	109.9	-38.3	-4.1	-10.4	-13.9	-3.9
Products of the chemical or allied industries.....	VI	9.148	148.4	149.7	0.8	-0.2	-0.1	1.5	0.9
Inorganic chemicals.....	28	0.595	271.4	269.1	-12.3	-1.2	-1.9	-2.5	-0.8
Organic chemicals.....	29	2.503	124.1	123.6	0.3	-0.1	0.1	2.4	-0.4
Pharmaceutical products.....	30	3.880	140.1	143.6	5.4	0.3	0.2	0.9	2.5
Fertilizers (Dec. 2009=100).....	31	0.317	84.2	83.5	-27.1	0.1	0.9	-9.0	-0.8
Tanning extracts; dye, pigments, varnish, paints & putty (Dec. 2011=100).....	32	0.190	96.8	97.5	-6.7	0.0	-0.2	-1.0	0.7
Miscellaneous chemical products.....	38	0.688	102.4	102.6	13.7	-3.5	-0.7	14.7	0.2
Plastics and articles thereof; rubber and articles thereof.....	VII	3.543	135.5	135.5	-6.2	-0.3	-0.5	-1.5	0.0
Plastics and articles thereof.....	39	2.275	139.1	138.9	-6.8	-0.2	-0.3	-1.9	-0.1
Rubber and articles thereof.....	40	1.268	130.6	130.8	-5.1	-0.4	-0.8	-0.9	0.2
Raw hides, skins, leather, furskins, travel goods, etc.....	VIII	0.739	126.6	125.7	-2.0	-0.1	0.0	-0.3	-0.7
Articles of leather; travel goods, bags, etc. of various materials.....	42	0.700	129.9	129.6	-0.8	-0.1	0.0	-0.1	-0.2
Wood, wood charcoal, cork, straw, basketware and wickerwork.....	IX	0.811	135.3	134.4	-6.7	1.8	-0.4	0.0	-0.7
Wood and articles of wood; wood charcoal (Dec. 2014=100).....	44	0.785	92.8	92.1	-7.0	1.9	-0.4	0.0	-0.8
Woodpulp, recovered paper, and paper products.....	X	1.179	109.9	109.8	-2.7	0.1	-0.5	-0.5	-0.1
Paper and paperboard; articles of paper pulp, paper or paperboard.....	48	0.795	104.0	104.2	-2.4	-0.3	-0.1	-0.8	0.2

See footnotes at end of table.

Table 5. U.S. import price indexes and percent changes for selected categories of goods: February 2015 to February 2016 — Continued
 [2000=100, unless otherwise noted]

Description	Harmoni- zied system	Relative importance Jan. 2016 ¹	Index		Percent change				
			Jan. 2016	Feb. 2016	Annual	Monthly			
					Feb. 2015 to Feb. 2016	Oct. 2015 to Nov. 2015	Nov. 2015 to Dec. 2015	Dec. 2015 to Jan. 2016	Jan. 2016 to Feb. 2016
Printed matter (Dec. 2015=100).....	49	0.215	100.0	100.0	-	-	-	0.0	0.0
Textile and textile articles.....	XI	5.627	113.7	113.6	-1.0	-0.1	-0.2	0.0	-0.1
Articles of apparel and clothing accessories, knitted or crocheted.....	61	2.331	104.0	104.0	0.1	0.0	0.0	0.0	0.0
Articles of apparel and clothing accessories, not knitted or crocheted.....	62	1.945	119.8	119.8	-0.5	-0.1	-0.2	0.3	0.0
Made-up or worn textile articles.....	63	0.656	104.1	103.6	-3.2	-0.4	-0.2	-0.7	-0.5
Headgear, umbrellas, artificial flowers, etc...	XII	1.569	123.1	123.1	0.2	-0.1	-0.1	-0.2	0.0
Footwear and parts of such articles.....	64	1.362	122.1	122.1	-0.1	-0.1	-0.2	-0.3	0.0
Stone, plaster, cement, asbestos, ceramics, glass etc.....	XIII	0.981	131.3	131.2	-0.8	0.2	-0.4	-0.4	-0.1
Articles of stone, plaster, cement, asbestos, or mica (Dec. 2015=100).....	68	0.340	99.3	99.0	-	-	-	-0.7	-0.3
Ceramic products.....	69	0.291	138.5	138.5	0.1	-0.1	0.1	0.3	0.0
Glass and glassware.....	70	0.350	128.1	128.2	-0.6	0.0	-1.0	-0.5	0.1
Pearls, stones, precious metals, imitation jewelry, and coins.....	XIV	2.954	160.4	162.6	-7.7	-0.9	-2.6	0.6	1.4
Base metals and articles of base metals. ...	XV	5.433	151.9	150.8	-13.5	-1.4	-1.2	-1.8	-0.7
Iron and steel.....	72	1.209	150.7	148.6	-26.5	-4.0	-1.7	-4.3	-1.4
Articles of iron or steel.....	73	1.782	140.3	139.2	-8.1	-0.8	-0.9	-1.2	-0.8
Copper and articles thereof.....	74	0.376	247.2	240.1	-16.0	-0.9	-1.5	-2.6	-2.9
Aluminum and articles thereof.....	76	0.738	120.6	120.1	-13.7	-1.5	-0.7	-0.7	-0.4
Tools, implements, cutlery, spoons and forks, of base metal; parts thereof.....	82	0.467	125.6	125.6	-2.6	-0.7	-0.2	-0.2	0.0
Miscellaneous articles of base metal.....	83	0.541	137.3	137.1	-0.7	0.4	-0.2	-0.2	-0.1
Machinery, electrical equipment, TV image and sound recorders, parts, etc.....	XVI	31.562	81.6	81.4	-2.2	-0.1	-0.2	-0.1	-0.2
Machinery and mechanical appliances; parts thereof.....	84	16.028	86.6	86.6	-2.0	-0.1	-0.3	-0.1	0.0
Electrical machinery and equip, sound and TV recorders & reproducers, parts.....	85	15.534	76.7	76.4	-2.3	-0.1	-0.3	-0.1	-0.4
Vehicles, aircraft, vessels and associated transport equipment.....	XVII	14.723	114.3	114.2	-0.4	-0.1	-0.2	0.2	-0.1
Motor vehicles and their parts.....	87	13.184	112.8	112.8	-0.4	-0.1	-0.2	0.1	0.0
Aircraft, spacecraft, and parts thereof (Dec. 2002=100).....	88	1.466	120.3	120.3	0.1	0.0	0.1	0.4	0.0
Optical, photo, measuring, medical & musical instruments; & timepieces.....	XVIII	4.080	102.6	104.0	0.0	0.0	-0.2	-0.3	1.4
Optical, photographic, measuring and medical instruments.....	90	3.744	99.4	100.8	0.1	0.0	-0.2	-0.4	1.4
Clocks and watches and parts thereof.....	91	0.270	140.3	141.3	-1.1	0.3	-0.7	0.2	0.7
Miscellaneous manufactured articles.....	XX	4.299	112.2	112.2	-1.2	0.0	-0.3	0.1	0.0
Furniture & stuffed furnishings; lamps & lighting fittings, nesoi; prefab bldgs.....	94	2.628	116.7	116.7	-1.5	0.0	-0.4	0.1	0.0
Toys, games and sports equipment; parts and accessories thereof.....	95	1.384	103.8	103.7	-1.2	-0.1	0.1	-0.1	-0.1
Miscellaneous manufactured articles.....	96	0.286	135.4	135.4	0.4	0.0	-0.1	1.1	0.0

¹ Relative importance figures are based on 2014 trade values.

NOTES: Data may be revised in each of the 3 months after original publication.

Dash = Not available

Table 6. U.S. export price indexes and percent changes for selected categories of goods: February 2015 to February 2016

[2000=100, unless otherwise noted]

Description	Harmoni- zied system	Relative importance Jan. 2016 ¹	Index		Percent change				
			Jan. 2016	Feb. 2016	Annual	Monthly			
					Feb. 2015 to Feb. 2016	Oct. 2015 to Nov. 2015	Nov. 2015 to Dec. 2015	Dec. 2015 to Jan. 2016	Jan. 2016 to Feb. 2016
Live animals; animal products.....	I	1.690	179.4	181.8	-15.6	0.5	-1.6	-1.5	1.3
Meat & edible meat offal (Dec. 2006=100)...	02	0.958	135.6	141.5	-18.3	-0.4	-1.4	-2.4	4.4
Vegetable products.....	II	4.380	194.4	197.2	-8.7	-0.8	-1.8	-1.0	1.4
Edible fruit and nuts; peel of citrus fruit or melons.....	08	1.047	172.4	172.3	-5.6	0.3	-2.9	1.4	-0.1
Cereals.....	10	1.270	178.9	184.6	-11.1	-1.3	-4.1	-3.5	3.2
Oilseeds and misc. grains, seeds, fruits, plants, straw and fodder.....	12	1.513	185.7	187.8	-12.9	-2.9	0.4	-1.6	1.1
Prepared foodstuffs, beverages, and tobacco.....	IV	2.965	146.7	145.3	-9.6	-0.4	-0.4	-1.2	-1.0
Preparations of vegetables, fruit, nuts or other parts of plants (Dec. 2009=100)....	20	0.385	119.3	118.9	0.4	-0.3	0.5	0.3	-0.3
Beverages, spirits, and vinegar (Dec. 2008=100).....	22	0.524	104.5	104.3	-5.4	-0.7	-1.3	-1.5	-0.2
Residues and waste from the food industries; prepared animal feed.....	23	0.652	194.6	192.8	-19.2	-1.3	-0.7	-2.2	-0.9
Mineral products.....	V	6.007	145.6	136.6	-32.8	-4.0	-9.0	-5.8	-6.2
Ores, slag and ash (Dec. 2012=100).....	26	0.441	68.7	67.8	-23.6	-1.9	-2.6	-2.1	-1.3
Mineral fuels, oils and residuals, bituminous substances and mineral waxes.....	27	5.366	138.1	128.7	-34.2	-4.2	-9.7	-6.2	-6.8
Products of the chemical or allied industries.....	VI	10.976	136.9	134.9	-6.4	-0.5	-0.6	-1.2	-1.5
Inorganic chemicals.....	28	0.981	184.0	170.5	-6.4	-0.2	0.4	0.1	-7.3
Organic chemicals.....	29	2.508	133.1	132.6	-10.0	-0.9	-0.5	-1.6	-0.4
Pharmaceutical products.....	30	2.952	106.5	105.5	-5.6	0.1	-1.0	-2.5	-0.9
Tanning or dyeing extracts, dyes, paints varnish, putty, & inks (Dec. 2015=100)....	32	0.559	99.6	98.9	-	-	-	-0.4	-0.7
Essential oils and resinoids; perfumery cosmetic or toilet preparations.....	33	0.846	134.3	134.1	-1.3	0.1	0.0	-0.9	-0.1
Soap; lubricants; waxes, polishing or scouring products; candles, pastes.....	34	0.524	116.0	116.0	2.0	0.3	-0.4	3.3	0.0
Miscellaneous chemical products.....	38	1.897	147.9	144.5	-5.9	-0.7	-1.0	-0.4	-2.3
Plastics and articles thereof; rubber and articles thereof.....	VII	5.152	136.0	135.1	-6.5	-1.4	-0.4	-0.4	-0.7
Plastics and articles thereof.....	39	4.156	131.3	130.4	-6.9	-1.6	-0.4	-0.6	-0.7
Rubber and articles thereof.....	40	0.996	155.9	155.2	-4.7	-0.6	-0.6	0.5	-0.4
Raw hides, skins, leather, furskins, travel goods, etc.....	VIII	0.335	120.0	120.8	-18.7	-3.4	0.0	-0.5	0.7
Raw hides and skins other than furskins and leather (Dec.2014=100).....	41	0.180	68.0	67.8	-29.7	-5.2	-0.4	-1.3	-0.3
Wood, wood charcoal, cork, straw, baskets and wickerwork (Dec. 2014=100).....	IX	0.666	96.3	95.1	-4.3	1.1	0.8	0.0	-1.2
Woodpulp, recovered paper, and paper products.....	X	2.142	120.7	120.6	-2.3	-0.7	-0.6	-1.0	-0.1
Woodpulp and recovered paper.....	47	0.602	119.5	119.1	-2.9	-2.8	-1.3	-1.5	-0.3
Paper and paperboard; articles of paper pulp, paper or paperboard.....	48	1.154	120.3	120.2	-2.8	0.2	-0.8	-1.1	-0.1
Printed material (Dec. 2014=100).....	49	0.386	100.4	100.4	0.1	0.1	1.2	0.0	0.0
Textile and textile articles.....	XI	1.742	120.1	119.7	-2.8	-0.7	0.4	-0.4	-0.3
Cotton, including yarns and woven fabrics thereof.....	52	0.389	114.1	112.2	-6.3	-1.2	0.0	-1.7	-1.7

See footnotes at end of table.

Table 6. U.S. export price indexes and percent changes for selected categories of goods: February 2015 to February 2016 — Continued
 [2000=100, unless otherwise noted]

Description	Harmoni- zied system	Relative importance Jan. 2016 ¹	Index		Percent change				
			Jan. 2016	Feb. 2016	Annual	Monthly			
					Feb. 2015 to Feb. 2016	Oct. 2015 to Nov. 2015	Nov. 2015 to Dec. 2015	Dec. 2015 to Jan. 2016	Jan. 2016 to Feb. 2016
Stone, plaster, cement, asbestos, ceramics, glass etc.....	XIII	0.882	122.9	123.0	0.3	0.2	0.1	0.2	0.1
Articles of stone, plaster, cement, asbestos, or mica (Dec. 2015=100).....	68	0.297	100.5	100.5	—	—	—	0.5	0.0
Glass and glassware.....	70	0.445	99.4	99.4	-0.2	0.1	0.1	0.1	0.0
Pearls, stones, precious metals, imitation jewelry, and coins.....	XIV	4.231	219.7	223.4	-7.2	-1.4	-2.5	0.7	1.7
Base metals and articles of base metals. ...	XV	4.971	141.3	139.7	-9.8	-1.5	-1.3	-0.4	-1.1
Iron and steel.....	72	0.978	136.3	134.7	-20.5	-4.0	-2.8	-1.0	-1.2
Copper and articles thereof.....	74	0.408	144.5	144.3	-21.2	-3.4	-6.3	-4.4	-0.1
Aluminum and articles thereof.....	76	0.779	103.5	98.3	-17.7	-2.7	0.0	-0.1	-5.0
Tools, implements, cutlery, spoons and forks, of base metal (Dec. 2015=100).	82	0.399	100.2	99.6	—	—	—	0.2	-0.6
Miscellaneous articles of base metal.....	83	0.361	148.2	148.2	0.3	0.0	-0.2	-0.1	0.0
Machinery, electrical equipment, TV image and sound recorders, parts, etc.....	XVI	30.271	96.0	96.3	-1.3	-0.1	-0.2	-0.2	0.3
Machinery and mechanical appliances; parts thereof.....	84	18.055	112.6	113.4	-0.5	-0.2	-0.2	-0.2	0.7
Electrical machinery and equipment and parts and accessories thereof.....	85	12.216	77.9	77.8	-2.6	-0.1	-0.3	-0.4	-0.1
Vehicles, aircraft, vessels and associated transport equipment.....	XVII	15.331	131.0	131.0	0.5	-0.1	-0.1	0.1	0.0
Motor vehicles and their parts.....	87	9.359	114.8	114.6	-0.2	-0.1	-0.1	0.0	-0.2
Optical, photo, measuring, medical & musical instruments; & timepieces.....	XVIII	6.355	107.2	107.1	-0.3	0.1	-0.3	0.2	-0.1
Miscellaneous manufactured articles.....	XX	1.565	111.1	111.6	0.3	-0.6	0.2	0.0	0.5
Furniture; stuffed furnishings; lamps and lighting fittings nesoi;.....	94	0.923	124.4	124.9	1.3	-0.6	0.2	0.2	0.4
Toys, games and sports equipment; parts and accessories thereof.....	95	0.483	90.1	90.1	0.2	0.0	0.3	0.0	0.0

¹ Relative importance figures are based on 2014 trade values.

NOTES: Data may be revised in each of the 3 months after original publication.

Dash = Not available

Table 7. U.S. import price indexes and percent changes by locality of origin: February 2015 to February 2016
[2000=100, unless otherwise noted]

Description	Relative importance Jan. 2016 ¹	Index		Percent change				
		Jan. 2016	Feb. 2016	Annual	Monthly			
				Feb. 2015 to Feb. 2016	Oct. 2015 to Nov. 2015	Nov. 2015 to Dec. 2015	Dec. 2015 to Jan. 2016	Jan. 2016 to Feb. 2016
Industrialized Countries²	100.000	114.4	114.4	-5.8	-0.4	-1.1	-0.9	0.0
Nonmanufactured articles.....	6.451	102.2	99.9	-26.7	-3.7	-9.2	-4.5	-2.3
Manufactured articles.....	93.173	115.0	115.2	-3.8	-0.1	-0.5	-0.6	0.2
Other Countries³	100.000	115.9	115.3	-6.6	-0.7	-1.3	-1.2	-0.5
Nonmanufactured articles.....	7.343	144.3	137.3	-30.5	-4.8	-8.3	-7.9	-4.9
Manufactured articles.....	92.434	102.6	102.3	-3.9	-0.2	-0.5	-0.6	-0.3
Canada	100.000	111.9	111.0	-11.9	-0.6	-2.9	-2.1	-0.8
Nonmanufactured articles.....	19.043	96.7	94.3	-27.3	-3.8	-9.8	-4.7	-2.5
Manufactured articles.....	80.288	120.1	119.7	-7.4	0.3	-1.1	-1.6	-0.3
European Union⁴	100.000	132.1	131.5	-2.3	-0.4	-0.4	0.1	-0.5
Manufactured articles.....	99.563	128.8	128.2	-2.2	-0.4	-0.3	0.1	-0.5
France (Dec. 2003=100)	100.000	122.3	122.4	-0.1	-0.2	-0.2	1.0	0.1
Germany (Dec. 2003=100)	100.000	113.2	113.7	-3.1	-0.1	-0.3	-2.7	0.4
United Kingdom (Dec. 2003=100)	100.000	122.0	121.7	-0.2	-0.5	-0.7	2.1	-0.2
Latin America⁵	100.000	135.2	133.3	-10.1	-1.1	-1.9	-1.6	-1.4
Nonmanufactured articles.....	14.300	164.8	153.7	-30.3	-5.2	-8.0	-6.2	-6.7
Manufactured articles.....	85.278	119.0	118.3	-5.6	-0.3	-0.7	-0.8	-0.6
Mexico (Dec. 2003=100)	100.000	125.2	124.1	-5.2	-0.4	-0.8	-0.6	-0.9
Nonmanufactured articles (Dec. 2008=100).....	7.567	95.0	85.9	-28.2	-4.9	-6.6	-2.0	-9.6
Manufactured articles (Dec. 2008=100)...	92.006	89.0	88.9	-2.7	0.1	-0.3	-0.4	-0.1
Pacific Rim (Dec. 2003=100)⁶	100.000	99.0	98.9	-2.3	-0.1	-0.2	-0.3	-0.1
China (Dec. 2003=100)	100.000	101.8	101.7	-1.6	-0.3	-0.1	-0.1	-0.1
Japan	100.000	95.1	95.2	-2.0	0.1	-0.2	0.0	0.1
Asian NICs⁷	100.000	84.7	85.2	-2.6	-0.6	-0.4	-0.5	0.6
ASEAN (Dec. 2003=100)⁸	100.000	97.0	98.2	-2.0	-0.1	-0.4	-0.7	1.2
Asia Near East (Dec. 2003=100)⁹	100.000	127.6	125.7	-23.6	-2.6	-5.3	-6.5	-1.5

¹ Relative importance figures are based on 2014 trade values.

² Western Europe, Canada, Japan, Australia, New Zealand and South Africa.

³ Eastern Europe, Latin America, OPEC countries, and other countries in Asia, Africa and the Western Hemisphere.

⁴ European Union countries.

⁵ Mexico, Central America, South America and the Caribbean.

⁶ China, Japan, Australia, Brunei, Indonesia, Macao, Malaysia, New Zealand, Papua New Guinea, Philippines and the Asian Newly Industrialized Countries.

⁷ Asian Newly Industrialized Countries - Hong Kong, Singapore, South Korea and Taiwan.

⁸ Association of Southeast Asian Nations - Brunei, Cambodia, Indonesia, Laos, Malaysia, Myanmar, Philippines, Singapore, Thailand and Vietnam.

⁹ Bahrain, Iran, Iraq, Israel, Jordan, Kuwait, Lebanon, Oman, Qatar, Saudi Arabia, Syria, United Arab Emirates and Yemen.

NOTES: Data may be revised in each of the 3 months after original publication.

Regions are not mutually exclusive.

Dash = Not available

Table 8. U.S. international price indexes and percent changes for selected transportation services: February 2015 to February 2016

[2000=100, unless otherwise noted]

Description	Relative importance Jan. 2016 ¹	Index		Percent change				
		Jan. 2016	Feb. 2016	Annual	Monthly			
				Feb. 2015 to Feb. 2016	Oct. 2015 to Nov. 2015	Nov. 2015 to Dec. 2015	Dec. 2015 to Jan. 2016	Jan. 2016 to Feb. 2016
Air Freight								
Import Air Freight	100.000	154.5	151.7	-9.5	0.4	-2.8	-4.6	-1.8
Europe (Dec. 2003=100).....	23.942	141.0	138.9	-9.2	-1.2	-3.4	0.4	-1.5
Asia.....	62.480	137.3	133.3	-11.7	1.7	-3.1	-7.4	-2.9
Export Air Freight	100.000	158.7	158.7	-0.4	0.4	-0.1	1.4	0.0
Europe (Dec. 2006=100).....	38.159	151.7	151.8	0.2	0.3	0.3	1.3	0.1
Inbound Air Freight	100.000	148.7	147.2	-7.4	0.3	-1.9	-2.5	-1.0
Europe (Dec. 2003=100).....	27.877	135.4	133.7	-6.0	0.0	-2.0	0.3	-1.3
Asia.....	57.771	132.8	130.6	-10.3	1.1	-2.2	-4.3	-1.7
Outbound Air Freight	100.000	144.0	144.2	-3.8	-0.7	-0.3	-0.2	0.1
Europe (Dec. 2003=100).....	34.793	158.0	158.3	-7.2	-0.9	0.5	0.1	0.2
Asia.....	42.340	133.1	133.4	-5.4	-1.4	-1.0	-0.8	0.2
Air Passenger Fares								
Import Air Passenger Fares	100.000	192.4	189.5	-3.3	3.7	-0.6	-1.0	-1.5
Europe.....	45.393	228.3	236.6	-2.2	5.1	-11.6	11.0	3.6
Asia.....	23.568	143.8	134.2	-3.0	-0.7	13.2	-10.1	-6.7
Latin America/Caribbean.....	8.236	142.5	146.6	-11.7	0.2	14.2	-16.4	2.9
Export Air Passenger Fares	100.000	168.4	144.3	-11.8	-0.4	4.5	4.7	-14.3
Europe.....	27.474	197.9	194.6	-6.7	2.6	-5.9	-0.7	-1.7
Asia.....	29.329	152.0	127.0	-7.9	-1.0	5.0	9.0	-16.4
Latin America/Caribbean.....	23.427	176.5	148.4	-17.1	1.4	5.4	8.3	-15.9

¹ Relative importance figures are based on 2014 trade values.

NOTES: Data may be revised in each of the 3 months after original publication.

Dash = Not available

TECHNICAL NOTE

Import and Export Merchandise and Services Price Indexes - All indexes use a modified Laspeyres formula and are not seasonally adjusted. Price indexes are reweighted annually, with a 2-year lag in the weights. Published series use a base year of 2000=100 where possible. More detailed index series and additional information may be obtained at www.bls.gov/mxp or by calling (202) 691-7101.

Merchandise Goods Classification Systems - The merchandise price indexes are published using three classification systems. Items are classified by end use according to the Bureau of Economic Analysis Classification System, by industry according to the North American Industry Classification System (NAICS), and by product category according to the Harmonized System (HS). While classification by end use and product category are self-explanatory, some notes are in order for classifying items by industry. In the NAICS imports and exports tables, items are classified by output industry, not input industry. As an example, NAICS import index 326 (plastics and rubber products manufacturing) include outputs such as manufactured plastic rather than inputs such as petroleum. The NAICS classification structure also matches the classification system used by the Producer Price Index (PPI) to produce the NAICS primary products indexes.

Import Price Indexes - Products have been classified by the Harmonized Tariff Schedule of the United States Annotated (TSUSA). Import prices are based on U.S. dollar prices paid by the U.S. importer. The prices are generally either "free on board" (f.o.b.) foreign port or "cost, insurance, and freight" (c.i.f.) U.S. port transaction prices, depending on the practices of the individual industry. The index for crude petroleum is calculated from data collected by the U.S. Department of Energy.

Export Price Indexes - Products have been classified by the Harmonized Schedule B classification system of the U.S. Bureau of the Census. The prices used are generally either "free alongside ship" (f.a.s.) factory or "free on board" (f.o.b.) transaction prices, depending on the practices of the individual industry. Prices used in the grain index, excluding rice, are obtained from the U.S. Department of Agriculture.

Services Price Indexes - Starting in September 2008, the import air passenger fares indexes represent changes in the average revenue per passenger received by foreign carriers from U.S. residents and are calculated from data obtained from an airline consulting service. These data include tickets sold by travel agencies and travel websites. Tickets sold directly by the airlines are excluded, as are frequent flyer tickets generally. Starting in January 2008, the export air passenger fares indexes represent changes in the average revenue per passenger received by U.S. carriers from foreign residents and are calculated from data collected directly from airlines. These data include frequent flyer tickets and those sold by consolidators. Taxes and fees are included in the import air passenger fares indexes and excluded from the export air passenger fares indexes. The air freight indexes are calculated from data collected directly from airlines. These data exclude mail and passenger baggage. The scope of the service being priced is the movement of freight from airport to airport only, and does not include any ground transportation or port service. The air freight indexes are presented using two definitions: balance of payments (which represent transactions between U.S. and foreign residents) and international (which represent transactions inbound to and outbound from the U.S.). Fact sheets specifying detailed information for each services industry are available at www.bls.gov/mxp under "MXP Publications."

Import Indexes by Locality of Origin - Prices used in these indexes are a subset of the data collected for the import price indexes. Beginning with January 2002, the indexes are defined by locality of origin using a nomenclature based upon the North American Industry Classification System (NAICS). Nonmanufactured goods are defined as NAICS 11 and 21, and manufactured goods are defined as NAICS 31-33.

Revision Policy - To reflect the availability of late reports and corrections by respondents, monthly data may be revised in each of the 3 months after original publication. After 3 months, no further data revisions take place. For example, data first published in the January release will be subject to revision in the releases for February, March, and April.

Uses of the Data - The primary use of the indexes is to deflate trade statistics, notably the foreign trade sector of the National Income and Product Accounts (NIPA) constructed by the Department of Commerce. Other published indexes are useful for general market analysis. For trade in international services, balance of payments indexes are used for deflating NIPA, while international indexes are more appropriate for market analysis. Merchandise and services indexes also can be used to study U.S. competitiveness and to compute price elasticities, and the merchandise import indexes by country or region of origin are useful in terms of trade analysis.

Email Subscription - The U.S. import and export price indexes news release is available through an email subscription service at www.bls.gov/bls/list.htm.

Additional Information - More detailed data are available on the Import/Export Price Indexes home page at www.bls.gov/mxp. For import and export price indexes data requests, send an email to mxpinfo@bls.gov.

Information from this release will be made available to sensory impaired individuals upon request. Voice phone: (202)-691-5200; Federal Relay Service: 1-(800)-877-8339.